

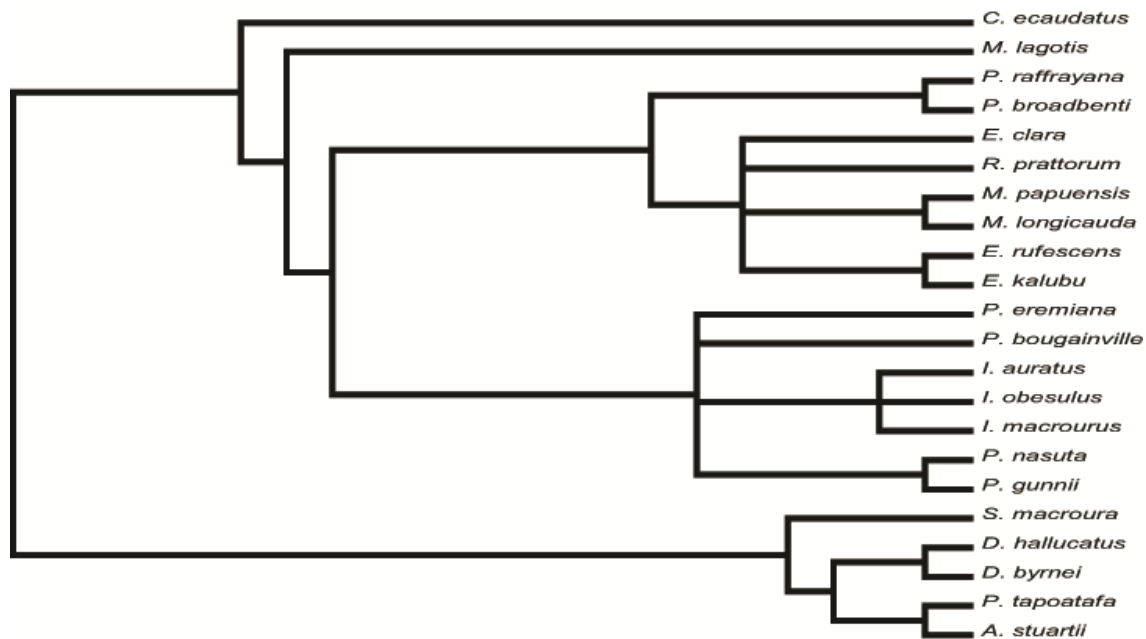
Earliest modern bandicoot and bilby (Marsupialia, Peramelidae and Thylacomyidae) from the  
Miocene of the Riversleigh World Heritage Area, northwestern Queensland, Australia

K. J. TRAVOUILLO, S. J. HAND, M. ARCHER & K. H. BLACK

Journal of Vertebrate Paleontology

SUPPLEMENTARY DATA 3

FIGURE 1S. Topology enforced in our molecular scaffold analysis (based on Krajewski et al., 2007; Westerman et al., 2008, 2012).



LITERATURE CITED

Krajewski, C., R. Torunsky, J. T. Sipiowski, and M. Westerman. 2007. Phylogenetic relationships of the dasyurid marsupial genus *Murexia*. *Journal of Mammalogy* 88:696-705.

Westerman, M., J. Young, and C. Krajewski. 2008. Molecular relationships of *Pseudantechinus*, *Parantechinus*, and *Dasykaluta* (Marsupialia: Dasyuridae). *Australian Mammalogy* 29:201-212.

Westerman, M., B. P. Kear, K. Aplin, R.W. Meredith, C. Emerling, and M. S. Springer. 2012. Phylogenetic relationships of living and recently extinct bandicoots based on nuclear and mitochondrial DNA sequences. *Molecular Phylogenetics and Evolution* 62:97-108.