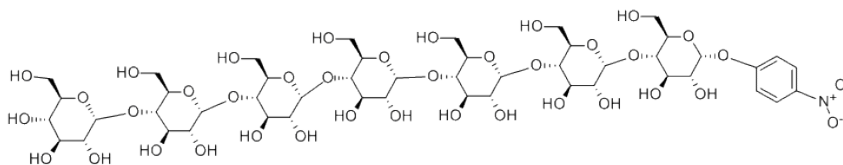
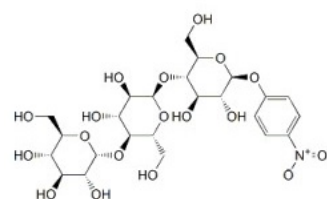


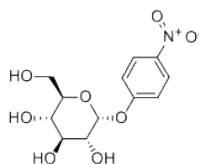
p-nitrophenyl- α -maltoheptaoside



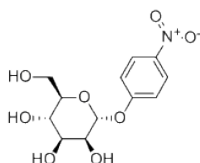
p-nitrophenyl- β -maltotrioside



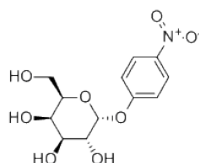
p-nitrophenyl- α -glucopyranoside



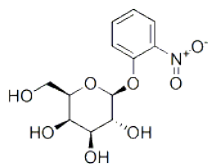
p-nitrophenyl- α -mannopyranoside



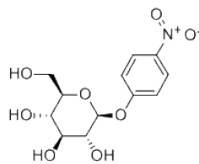
p-nitrophenyl- α -galactopyranoside



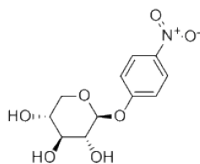
o-nitrophenyl- β -galactopyranoside



p-nitrophenyl- β -glucopyranoside



p-nitrophenyl- β -xylopyranoside



Supplemental Figure 1. Structural formulae of substrates of the eight endosperm enzymes used in this study.