

Supplemental Data

Legend:

Kaplan Meier analysis for overall and cardiovascular survival by SVi

(Fig.S1 A and S1B) and by FR (Fig. S2 A and S2 B), showing similar lower survival rates in patients with low SVi and low FR in comparison with normal SVi and normal FR.

Fig. S1 A. Overall survival curves by SV_i

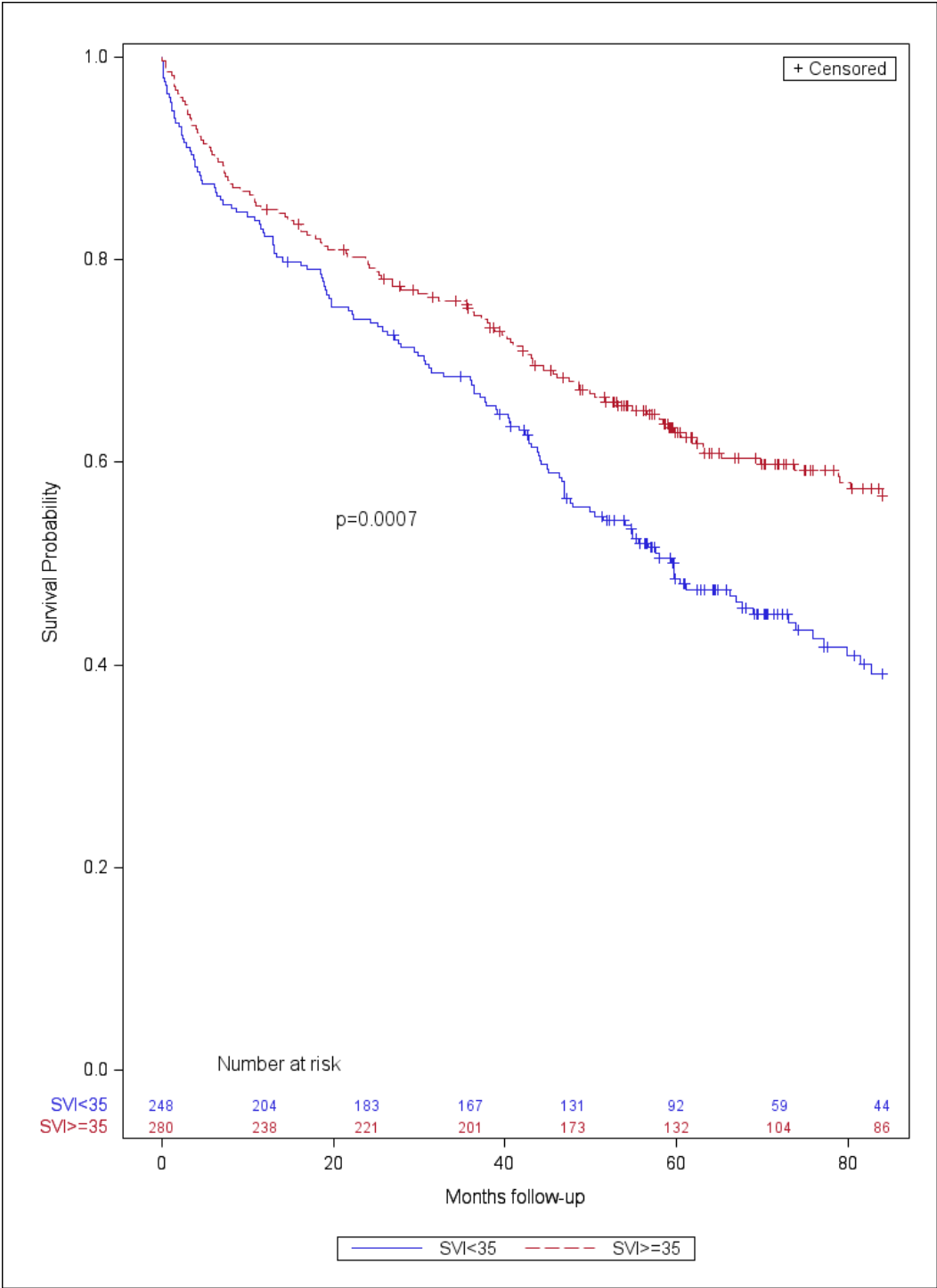


Fig. S1 B . Cardiovascular survival curves by SV_i

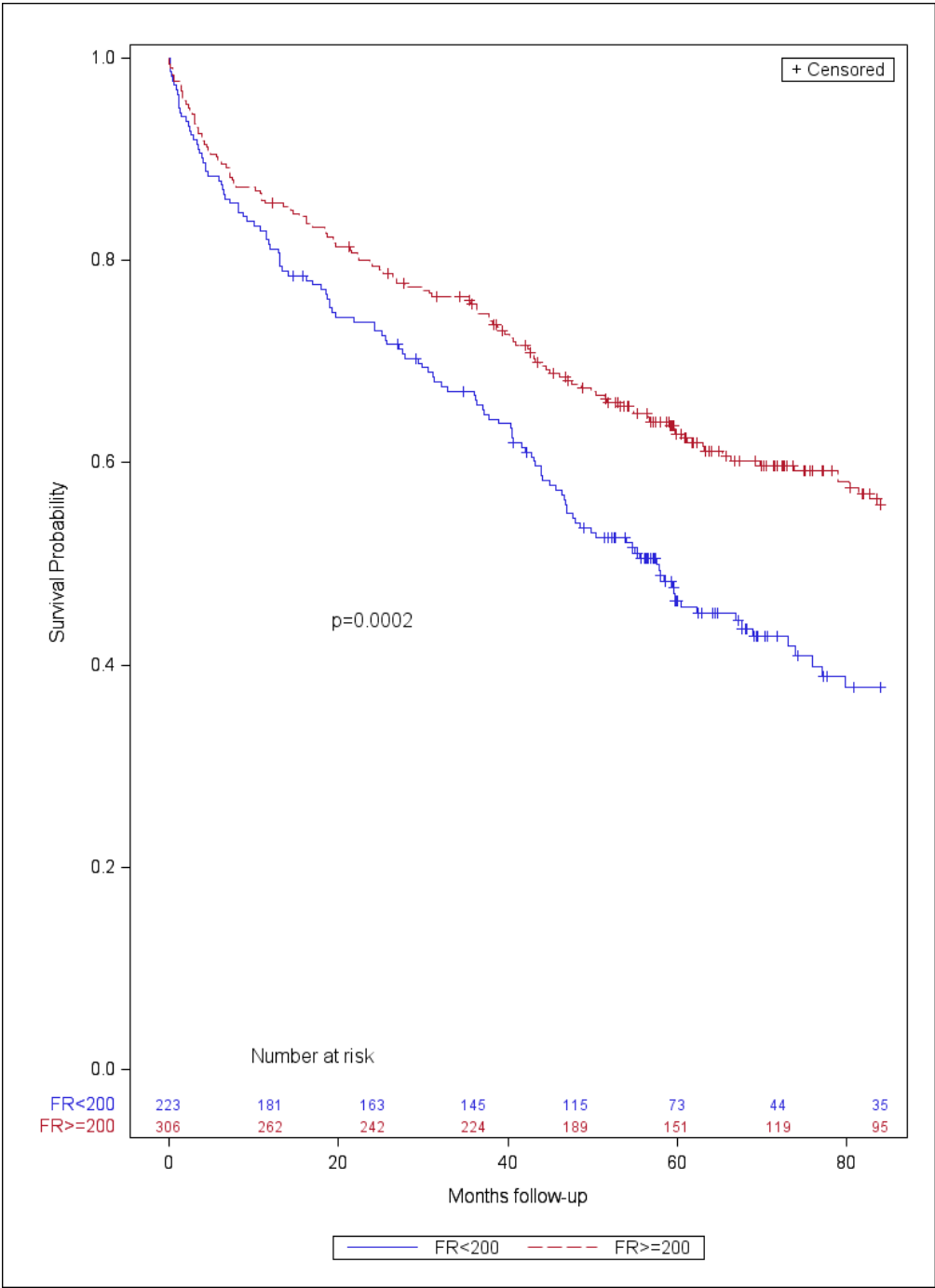


Fig. S2 A: Overall survival curves by FR

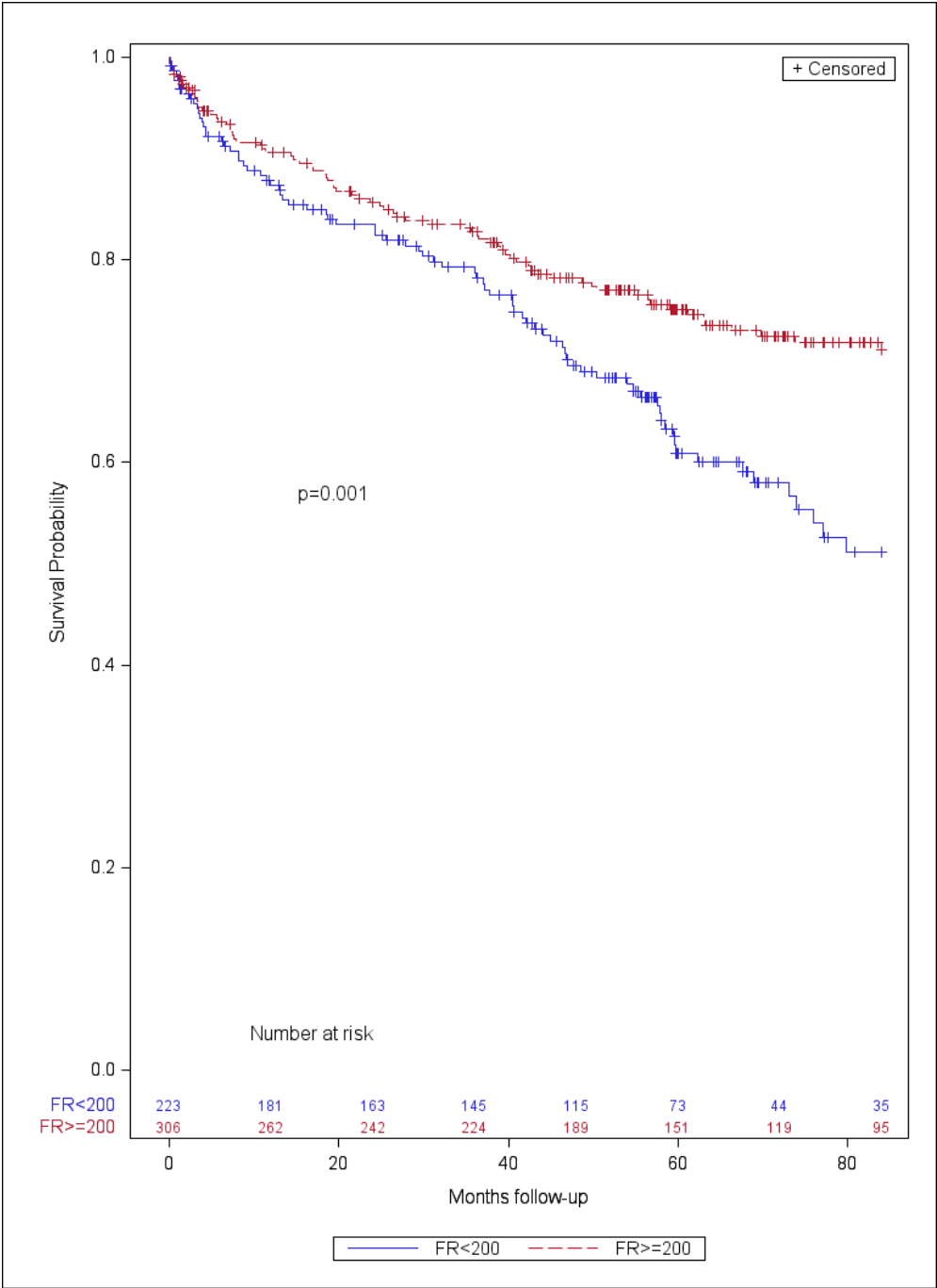


Fig. S2 B: Cardiovascular survival curves by FR

