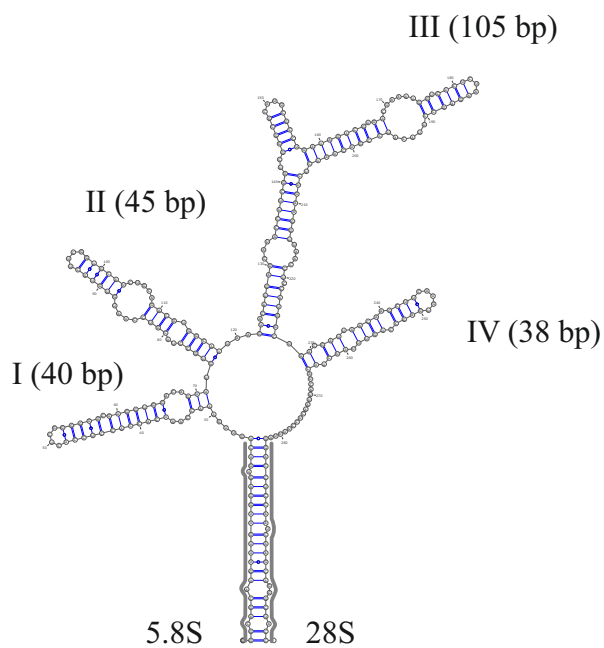
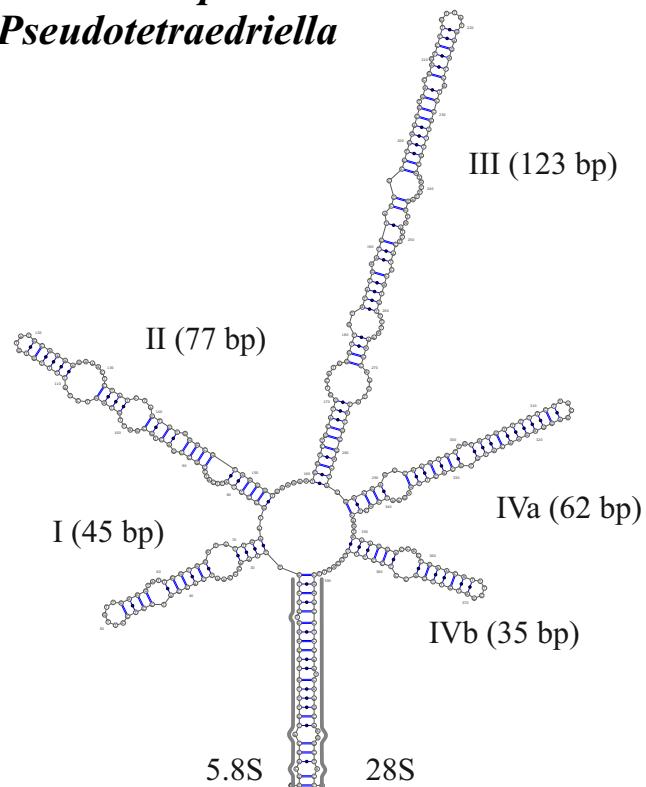


***Vischeria*-clade**



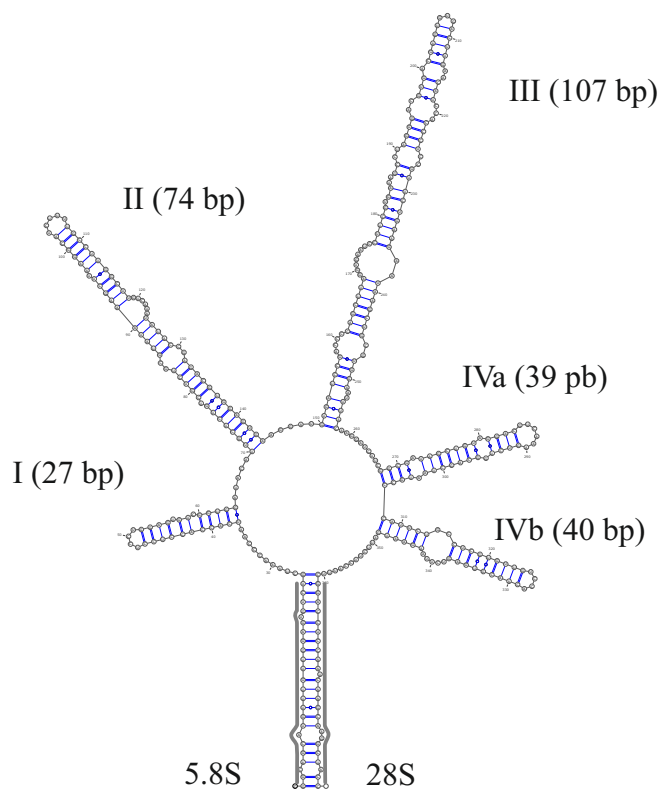
A. *Vischeria punctata* SAG 887-1

Monodopsis* / *Pseudotetraedriella



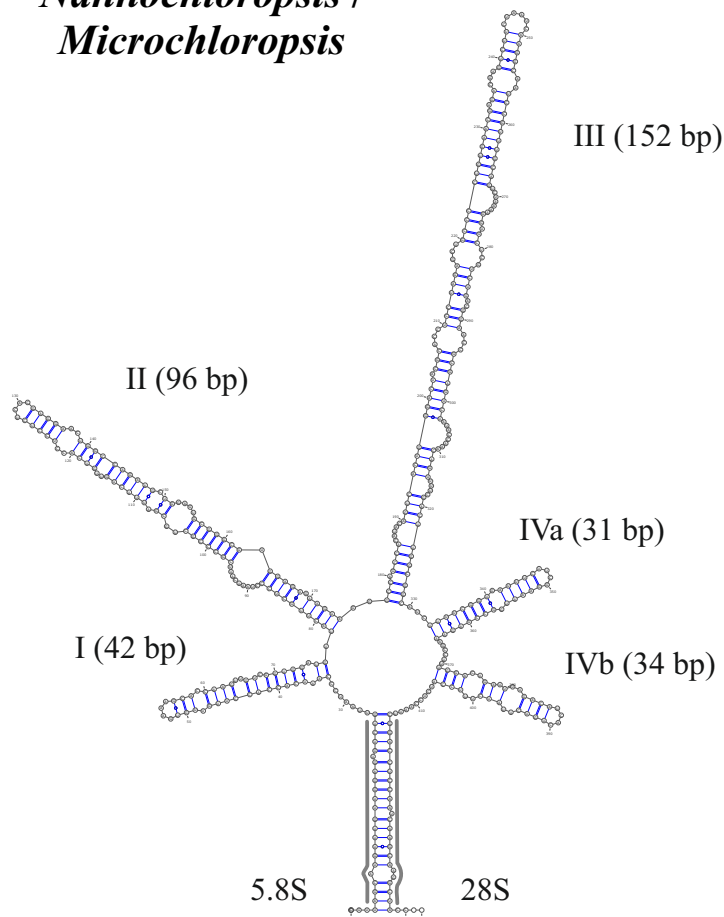
B. *Pseudotetraedriella kamillae* SAG 2056

***Vischeria*-related**



C. Unidentified eustigmatophyte SAG 2217

Nannochloropsis* / *Microchloropsis



D. *Nannochloropsis limnetica* SAG 18.99