

TOURIST MAP



TOURIST ATTRACTIONS AND FACILITIES

- Forest Adventure Park
- Astronomical Observatory
- Bus Stop
- Campsite and Mountain Hut
- Emergency Rescue Point
- Panoramic View
- Confectionery Factory
- Picnic Area
- Parking
- Walls Park Office
- Water Source
- Historical Buildings and Sites
- 1) Ugo Foscolo Wounding
- 2) Austrian Occupation 1747
- 3) Former Partisan House
- 4) Ancient Mill
- 5) Rural Museum
- 6) Ancient Road
- 7) Monumental Church
- 8) Historical Oratory
- 9) Ancient Convents
- 10) Sanctuary
- 11) Monumental Cemetery
- 12) Fort and Tower
- Typical Footpath
- Cable Railway
- Genoa-Casella Railway
- Hydrography
- River Bed
- Walls Park
- Buildings

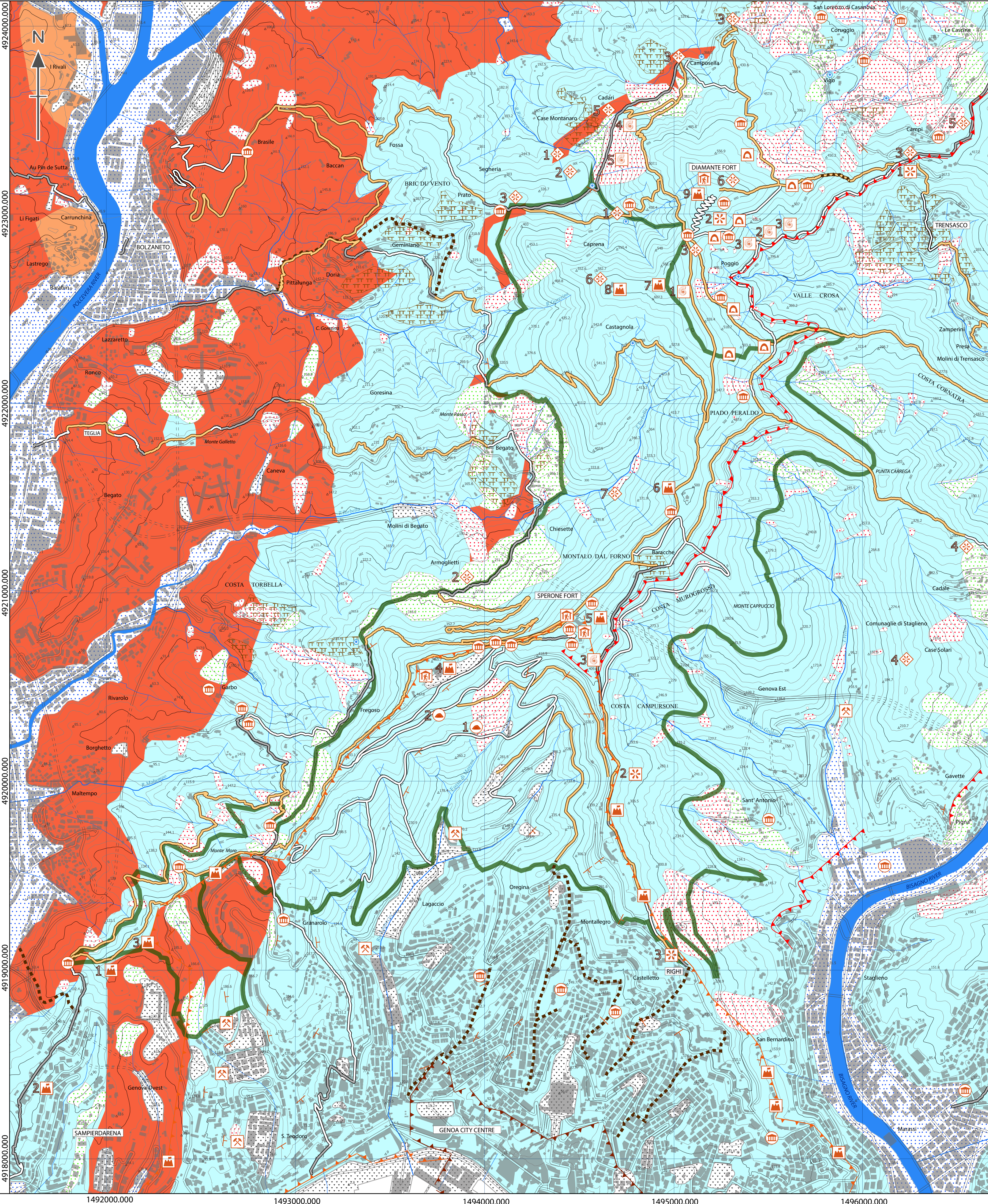
TRAILS NETWORK

- Sentiero delle Farfalle
- Via del Sale South
- Via del Sale North
- Via Postumia
- Main Mountain Bike Routes
- Main Horse Riding Trail
- Main Running Track
- Colle Trensasco - Forte Diamante
- Bolzaneto - Righi
- Righi - Crociera di Pino - Monte Carosino
- Sampierdarena - Forte Diamante
- San Sebastiano - Sella del Diamante - Bolzaneto
- San Teodoro - Forte Sperone
- Teglia - Cancelli dell'Avvocato

Land Use Sketch Map



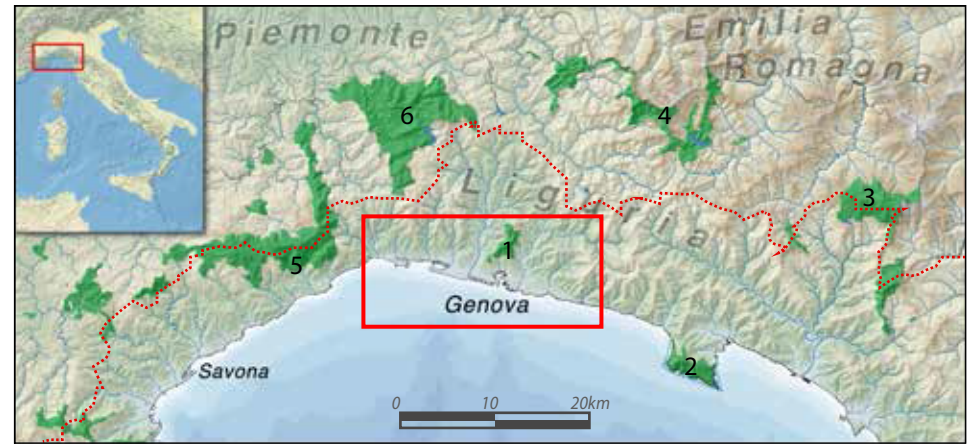
- Urban Area
- Urban Garden and Cemetery
- Olive Groves
- Agricultural Area
- Grazing and Lowland
- Coniferous Forest
- Mixed Forest
- Chestnuts
- River Bed
- Walls Park



Geological Landscape and Stone Heritage of the Genoa Walls Urban Park and Surrounding Area

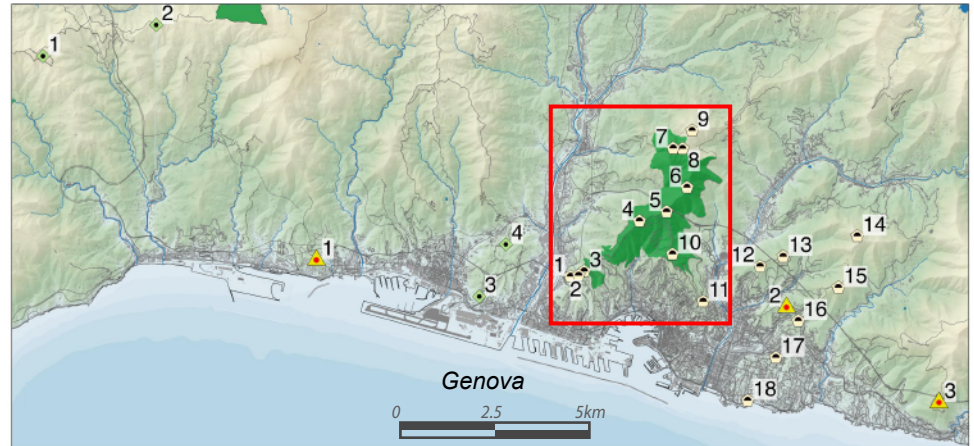
Alessandro Sacchini¹, Maria Imbrogio Ponaro¹, Guido Paliaga², Pietro Piana³, Francesco Faccini⁴, Paola Coratza⁵

¹GIS Cartography and Geography Consultants, Genoa (IT)
²CNR IRPI, Turin (IT), ³University of Nottingham (UK),
⁴University of Genoa (IT), ⁵University of Modena and Reggio Emilia (IT)
email: faccini@unige.it



PROTECTED AREAS AND PARKS

- 1: Walls Park
- 2: Portofino Park
- 3: Aveto Park
- 4: Anicia Park
- 5: Beguia Park
- 6: Capanne di Marcarolo Park



FORTS AND GARRISONS

- KINGDOM OF ITALY**
 - 1: Genesia Fort
 - 2: Bric Aresio Fort
 - 3: Casale Erzelli Fort
 - 4: Monte Guano Fort
 - 5: Sperone Fort
 - 6: Punt Fort
 - 7: Fratello Minore Fort
 - 8: Fratello Maggiore Fort
 - 9: Diamante Fort
- GENOA REPUBLIC AND SARDINIAN KINGDOM**
 - 10: Castellaccio Fort
 - 11: S. Bernardino Tower
 - 12: Quezzi Tower
 - 13: Quezzi Tower
 - 14: Monte Rabi Fort
 - 15: Richeleu Fort
 - 16: S. Tecla Fort
 - 17: S. Martino Fort
 - 18: S. Giuliano Fort

LITHOLOGICAL AND GEOMORPHOLOGICAL ELEMENTS

- Fills and Excavations Surfaces
- Landslides and Debris Covers
- Alluvial Deposits
- Colluvial Deposits
- Marly Limestone and Marly Siltstones with Shales and Calcarentes Interlayers
- Shales and Silty Shales with Siltstones Interlayers
- Clayey Shales
- Bed Attitude
- Quarry
- Water Spring
- River Bed
- Hydrography
- 1° Strahler Hierarchic Order
- 2° Strahler Hierarchic Order
- 3° Strahler Hierarchic Order

GEOLOGICAL LANDSCAPE AND STONE HERITAGE

Cultural Heritage

- Artificial Cavities
- Snow Pit
- Heritage Site
- Fort and Tower
- 1) Crocetta Fort
- 2) Belvedere Fort
- 3) Tenaglia Fort
- 4) Begato Fort
- 5) Sperone Fort
- 6) Punt Fort
- 7) Fratello Minore Fort
- 8) Fratello Maggiore Fort
- 9) Fort Diamante
- Ancient Aqueduct
- XVI Century Walls
- XVII Century Walls
- Terraces with Dry-Stone Walls

Landscape Heritage

- Geological Site
- 1) Cast "Helmintholdea Labirintica"
- 2) Sedimentary Markers
- 3) Tectonic and/or Selective Erosion
- 4) Slickenside
- 5) Slaty Cleavage
- Geomorphological Site
- 1) Waterfalls and Lakes
- 2) Counterslope
- 3) Saddle
- 4) Ancient Fluvial Surface
- 5) Relict Valley
- 6) Horst
- 7) Stream Capture
- Panoramic Geo-Viewpoint
- 1) Recent Tectonic of Bisagno Valley
- 2) Historical Land Use Changes
- 3) Geologic Contact Alps Apennines
- Cave
- 1) Tana Draguna
- 2) Grotta Superiore della Dragonara

TRAIL NETWORK FEATURES

- Asphalt or Concrete
- Cobblestones
- Natural Soil
- Walls Park
- Building
- Natural Rocky
- Typical Footpath

Based on Topographic map: Geoidetic Datum: Rome 1940
Coordinate system type: Gauss Boaga west
Projection: Transverse Mercator
Reference ellipsoid: International 1909
Base map from Regione Liguria: Vertical datum reference: Geoid (orthometric)
GTR 1:50000 dal 2007 ed. 3DDB; reticolo idrografico e Nodi idrografici sc.1:10000 - ed. 2007; Aree protette e relativi piani, sc. 1:25000 ed. 2011;
Locorior map: Natural Earth raster