

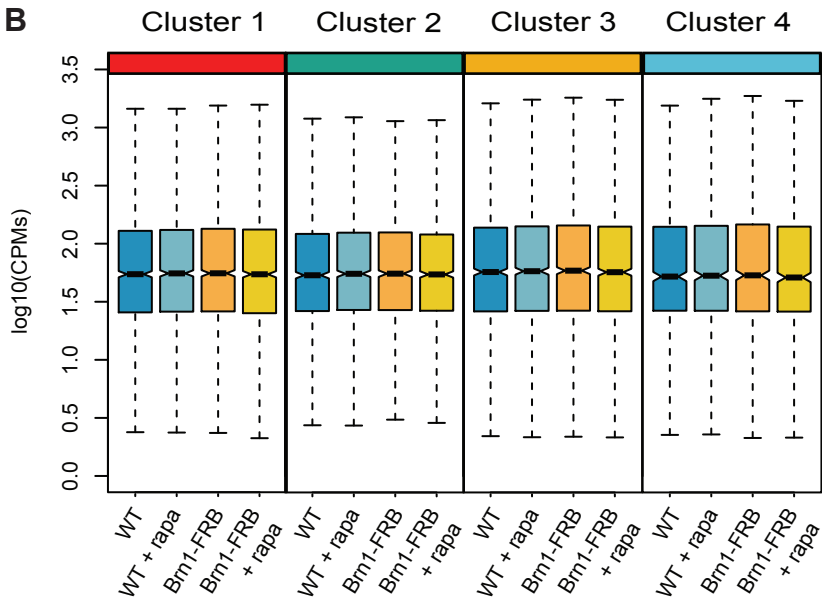
Figure S4

A

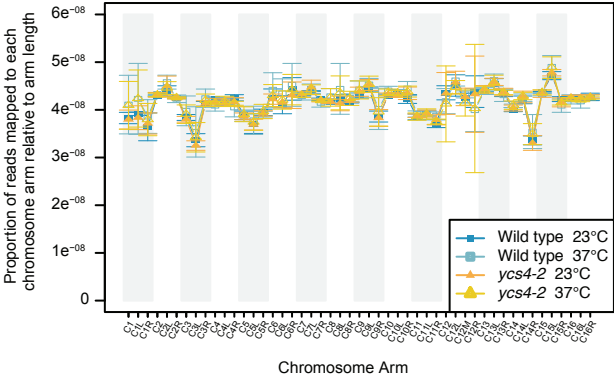
Nonsynonymous mutations in *ycg1-2*

	DNA	Protein
Mutation 1	1277 T > C	424 L > S
Mutation 2	1549 A > G	225 N > D
Mutation 3	2002 T > C	666 S > P
Mutation 4	2737 G > A	911 A > T
Mutation 5	2815 G > A	937 A > T

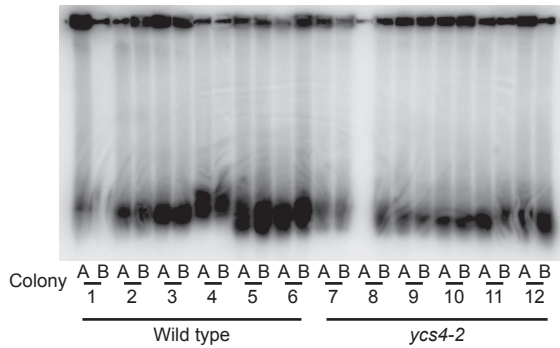
B



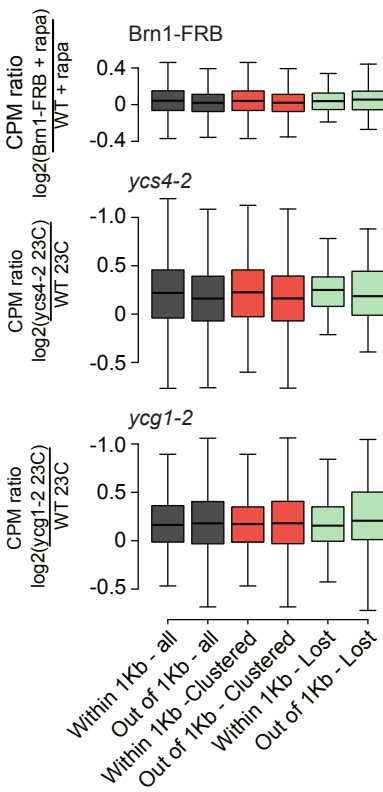
C



D



E



F

