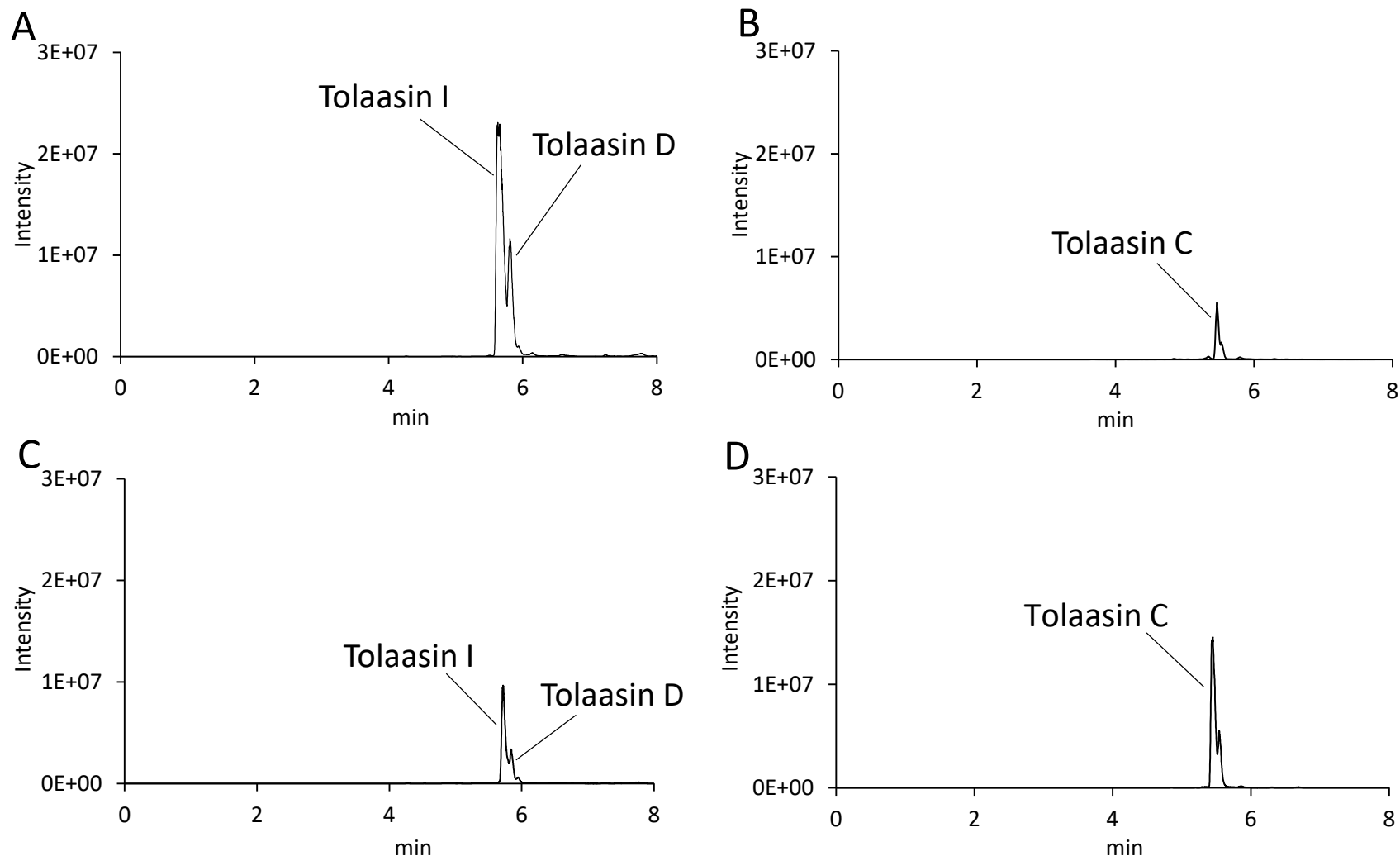


Supplemental Figure 1



LC-MS chromatograms in selected ion recording (SIR) mode at m/z 994 $[M+2H]^{2+}$ for tolaasin I and D (panels A and C), and at m/z 1003 $[M+2H]^{2+}$ for tolaasin C (panels B and D). Panels A and B, the extract of tolaasins treated in PBS ; panels C and D, the extract of tolaasins treated with K3-5.