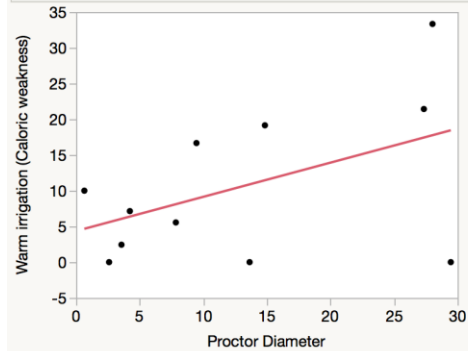
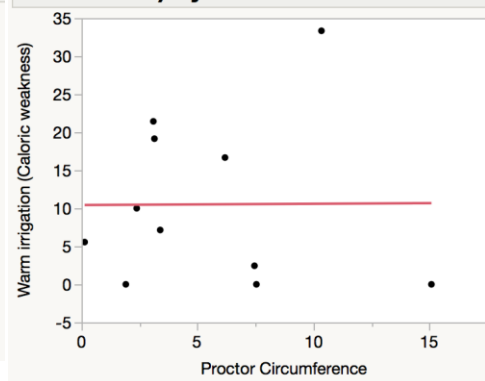


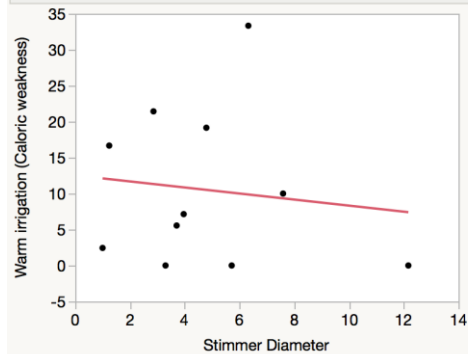
Bivariate Fit of Warm irrigation (Caloric weakness) By Proctor Diameter



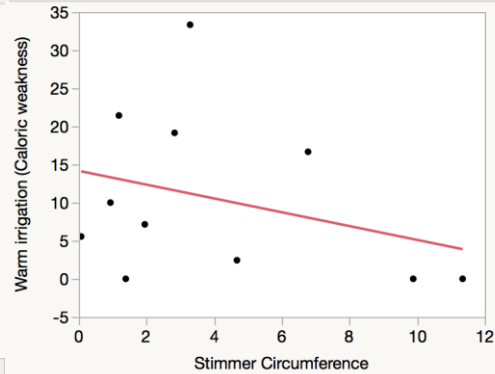
Bivariate Fit of Warm irrigation (Caloric weakness) By Proctor Circumference



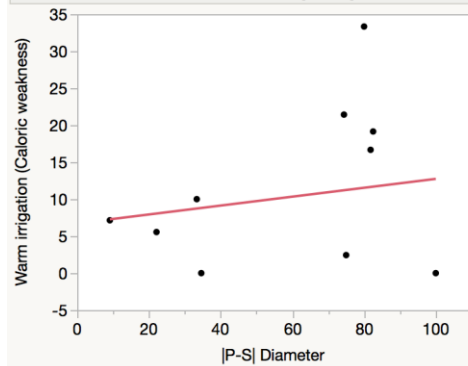
Bivariate Fit of Warm irrigation (Caloric weakness) By Stimmer Diameter



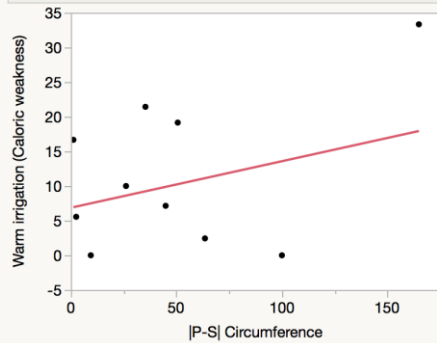
Bivariate Fit of Warm irrigation (Caloric weakness) By Stimmer Circumference



Bivariate Fit of Warm irrigation (Caloric weakness) By |P-S| Diameter

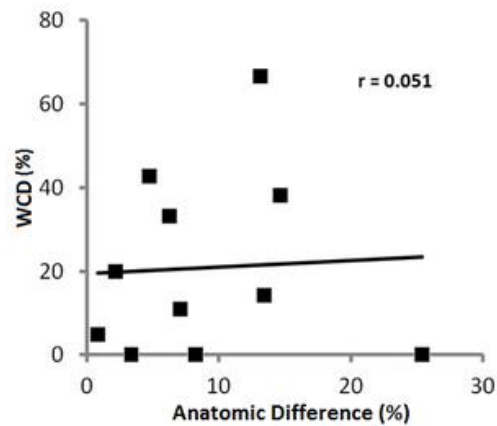


Bivariate Fit of Warm irrigation (Caloric weakness) By |P-S| Circumference



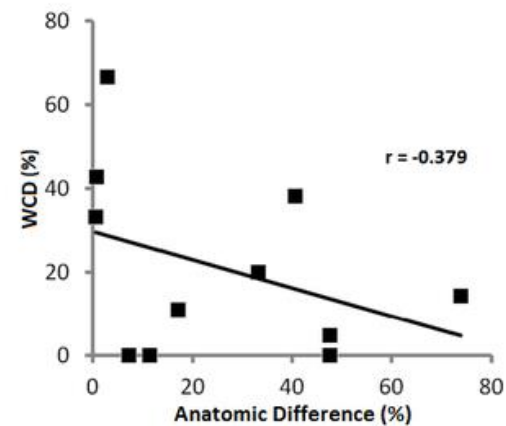
Mastoid Bone

V

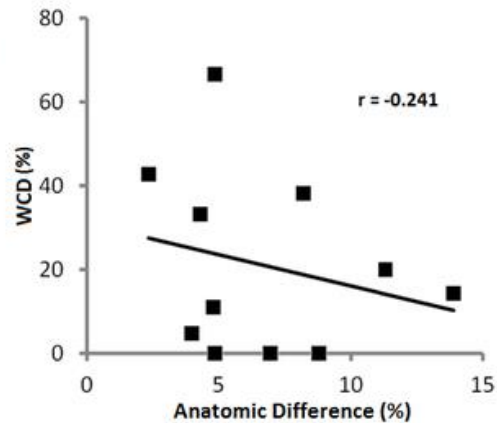


Mastoid Airspaces

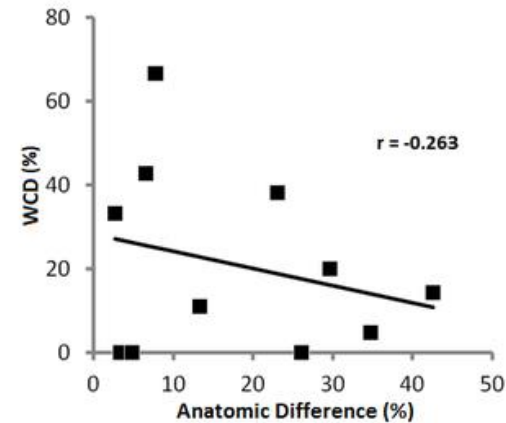
V



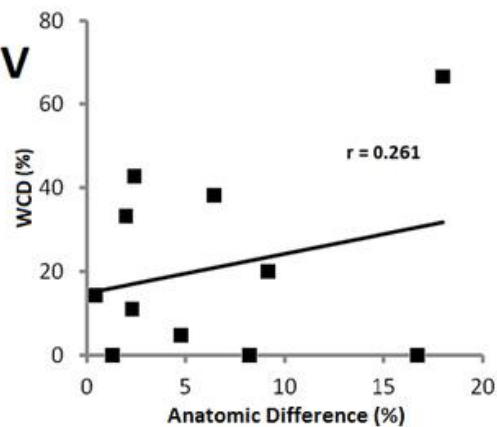
SA



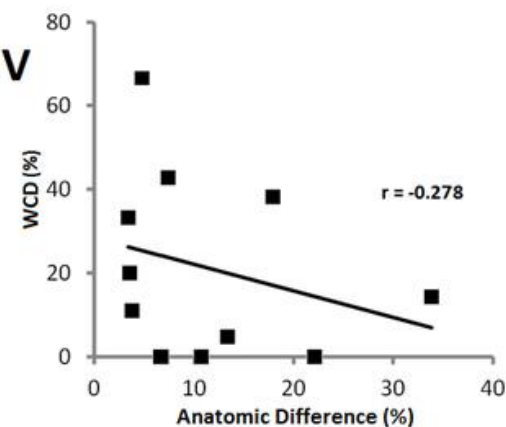
SA

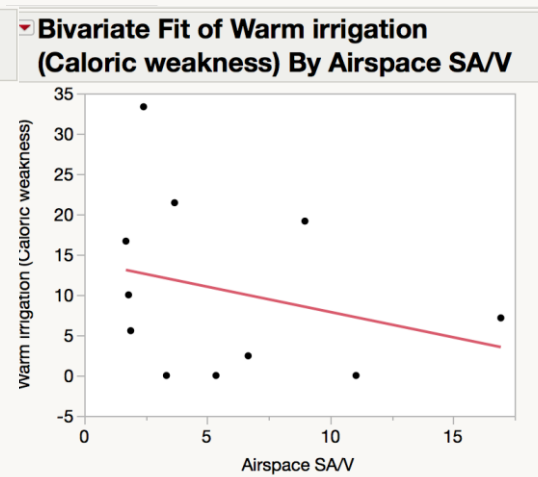
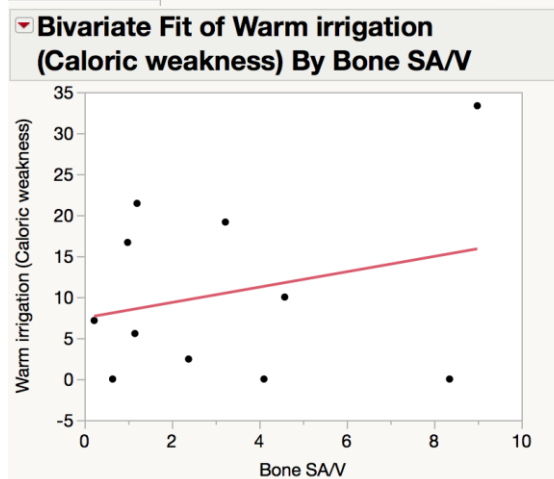
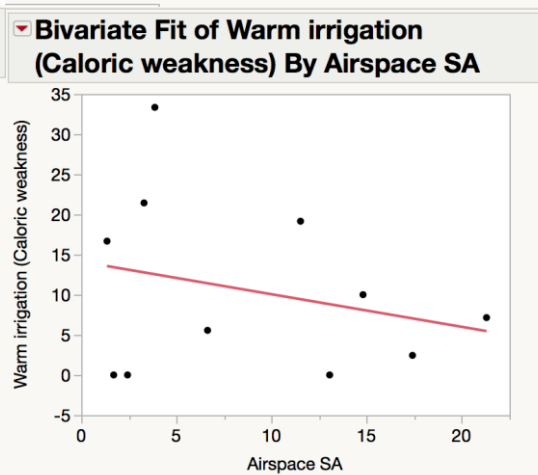
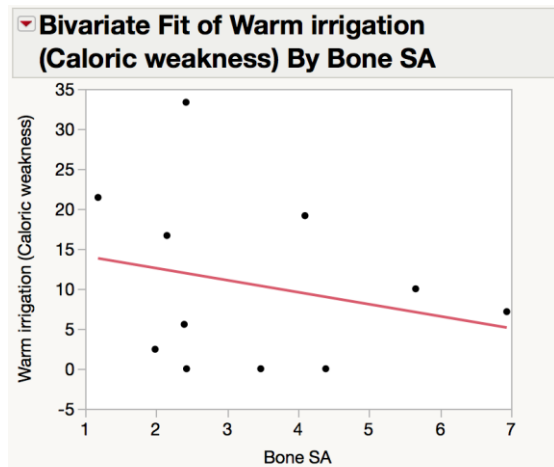
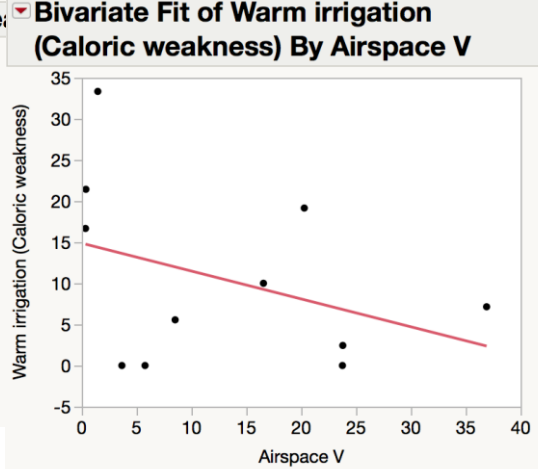
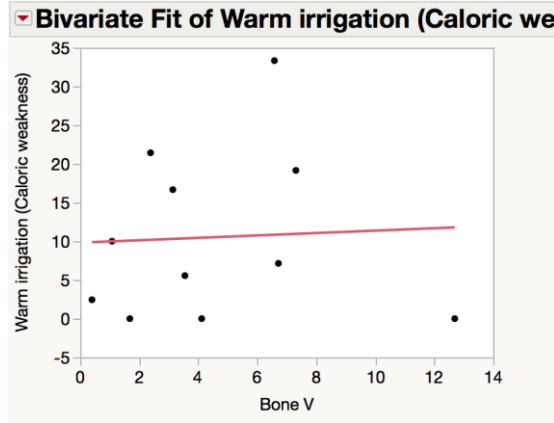


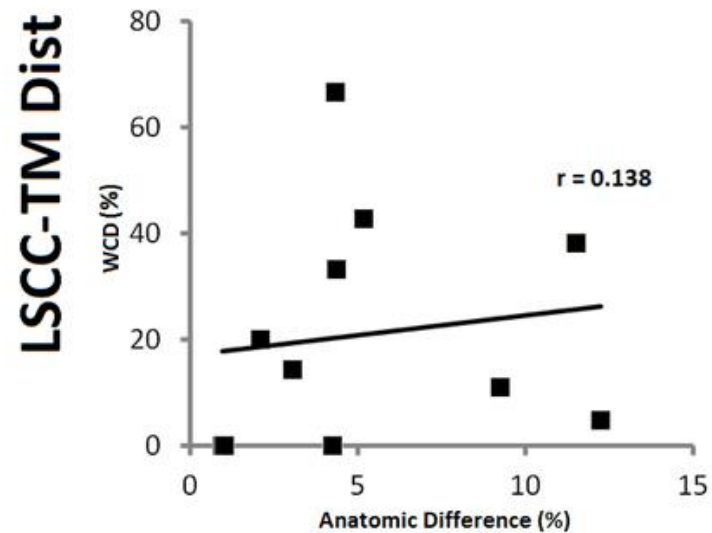
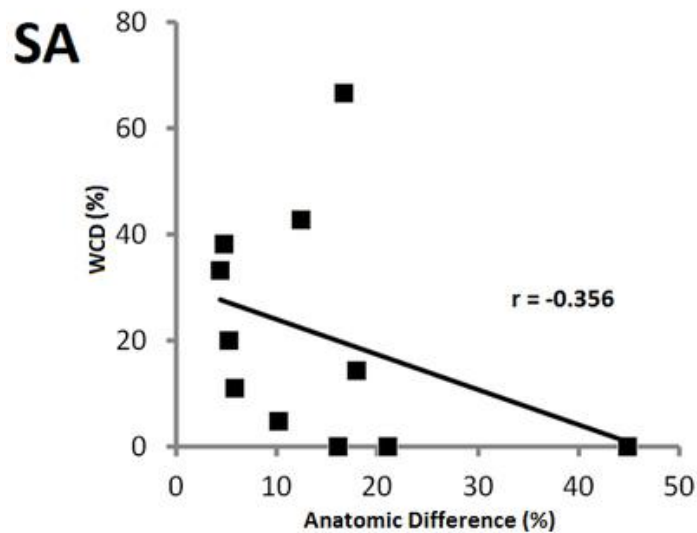
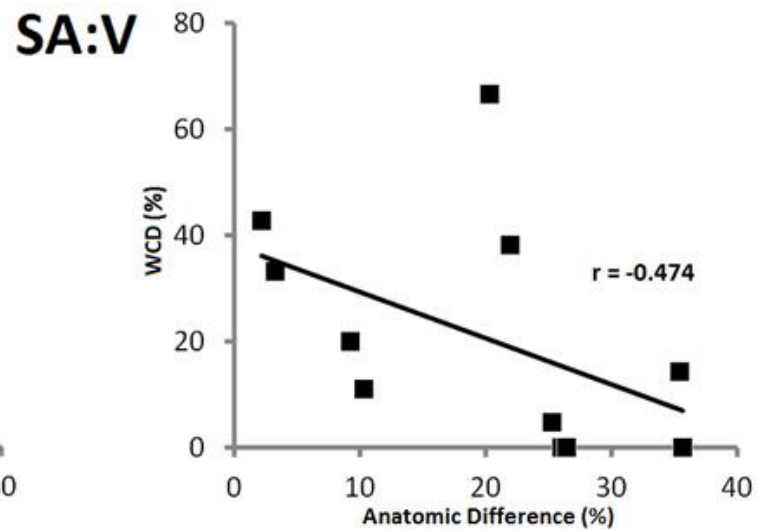
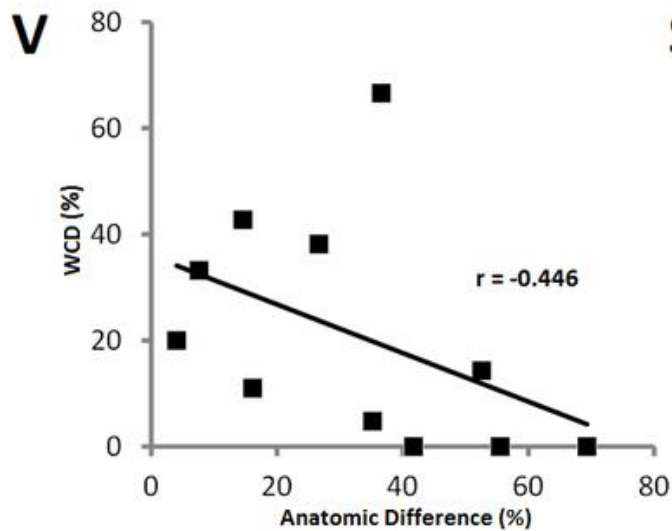
SA:V



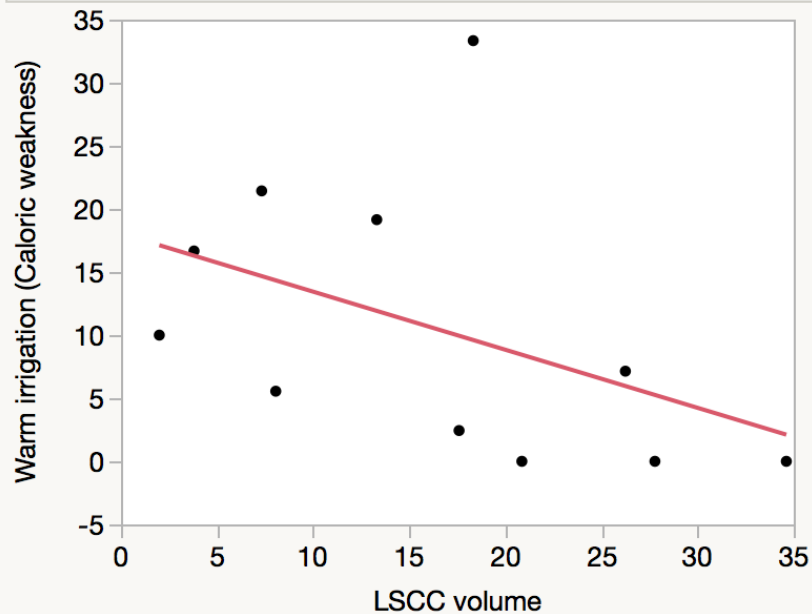
SA:V



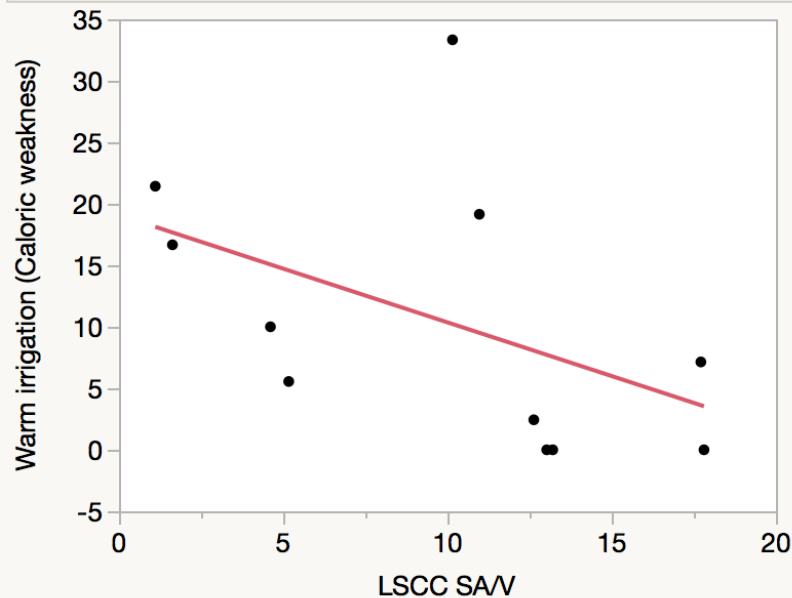




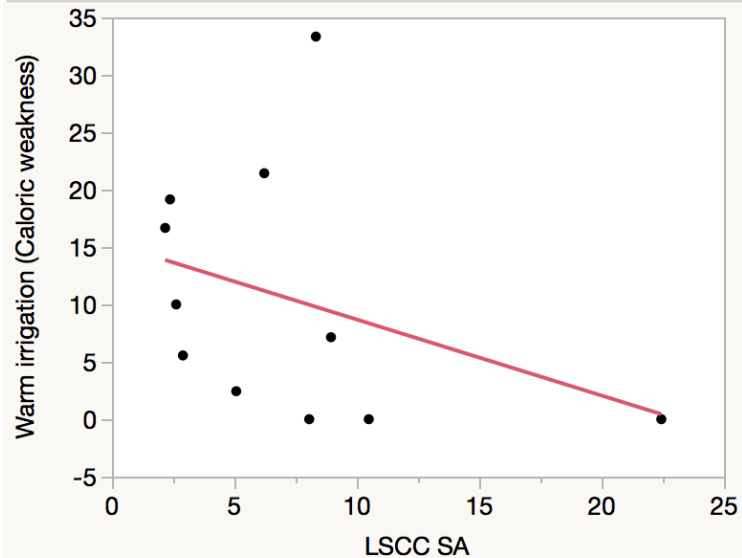
☒ **Bivariate Fit of Warm irrigation
(Caloric weakness) By LSCC volume**



☒ **Bivariate Fit of Warm irrigation
(Caloric weakness) By LSCC SA/V**



☒ **Bivariate Fit of Warm irrigation
(Caloric weakness) By LSCC SA**



☒ **Bivariate Fit of Warm irrigation
(Caloric weakness) By LSCC-TM distance**

