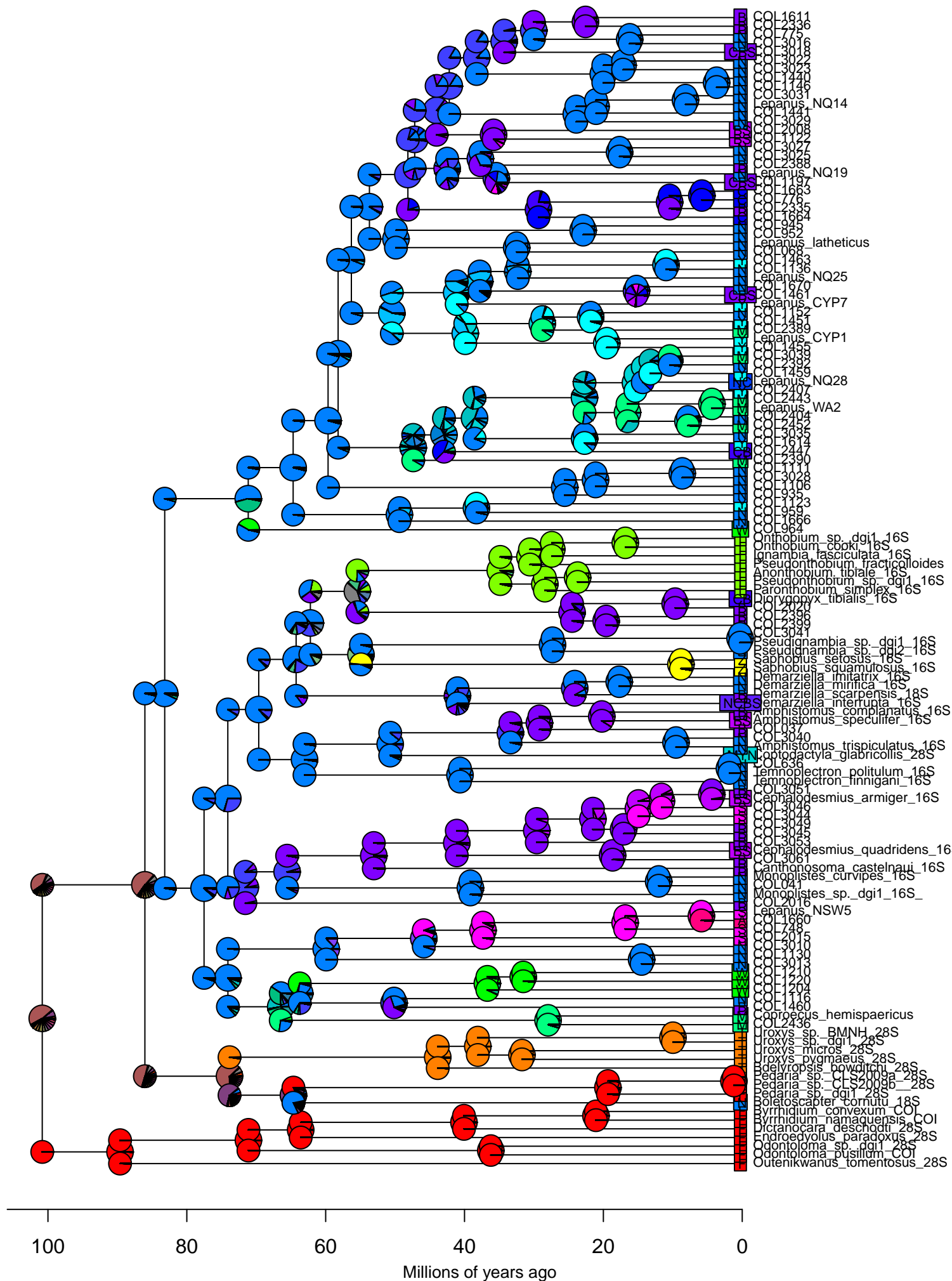
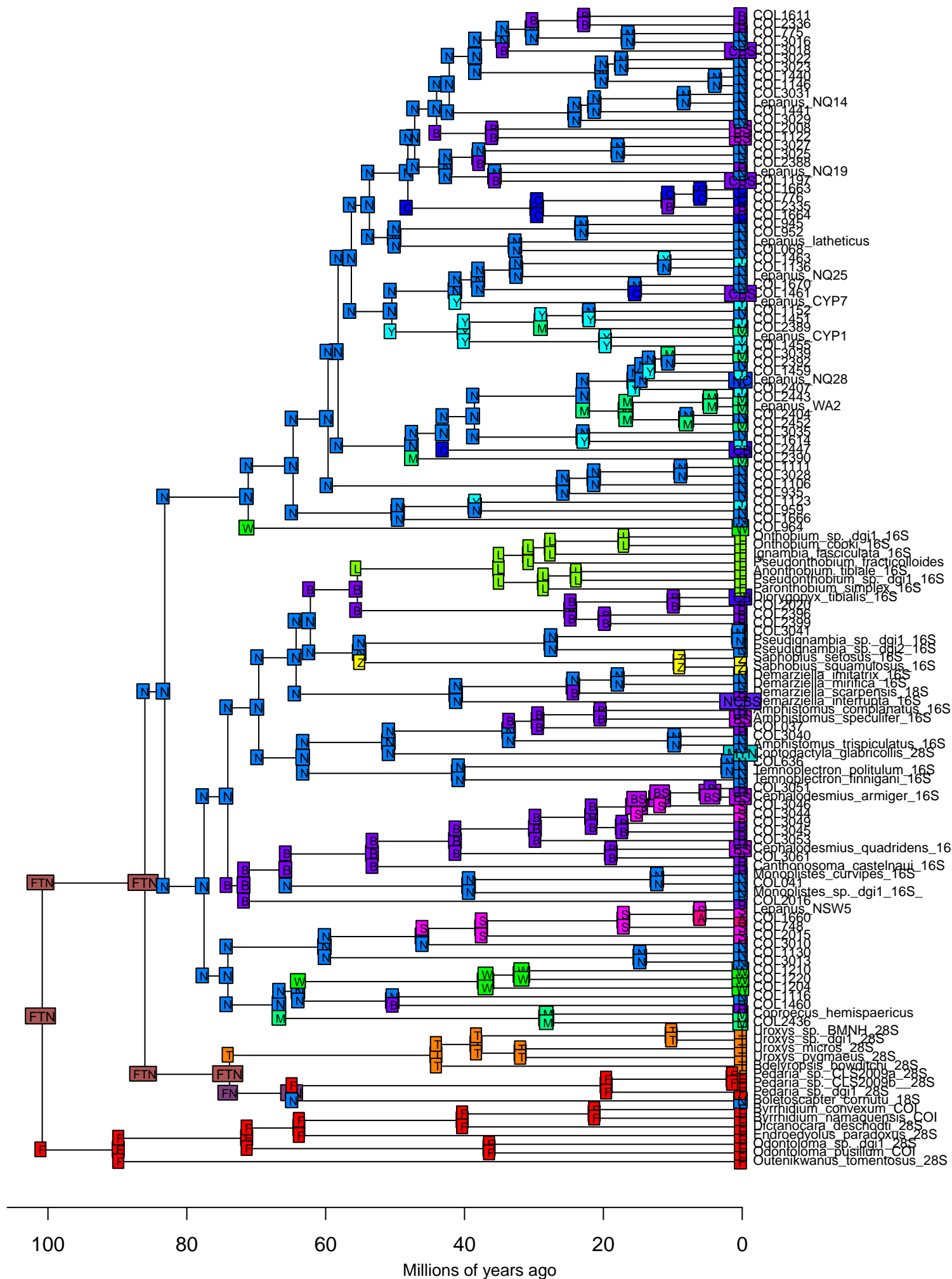


BioGeoBEARS DEC on Dungies M0_unconstrained
 ancstates: global optim, 4 areas max. d=8e-04; e=0.0014; j=0; LnL=-317.35



BioGeoBEARS DEC+J on Dungiesb M0_unconstrained
ancstates: global optim, 4 areas max. d=4e-04; e=0; j=0.0173; LnL=-284.98



BioGeoBEARS DEC+J on Dungiesb M0_unconstrained
ancstates: global optim, 4 areas max. d=4e-04; e=0; j=0.0173; LnL=-284.98

