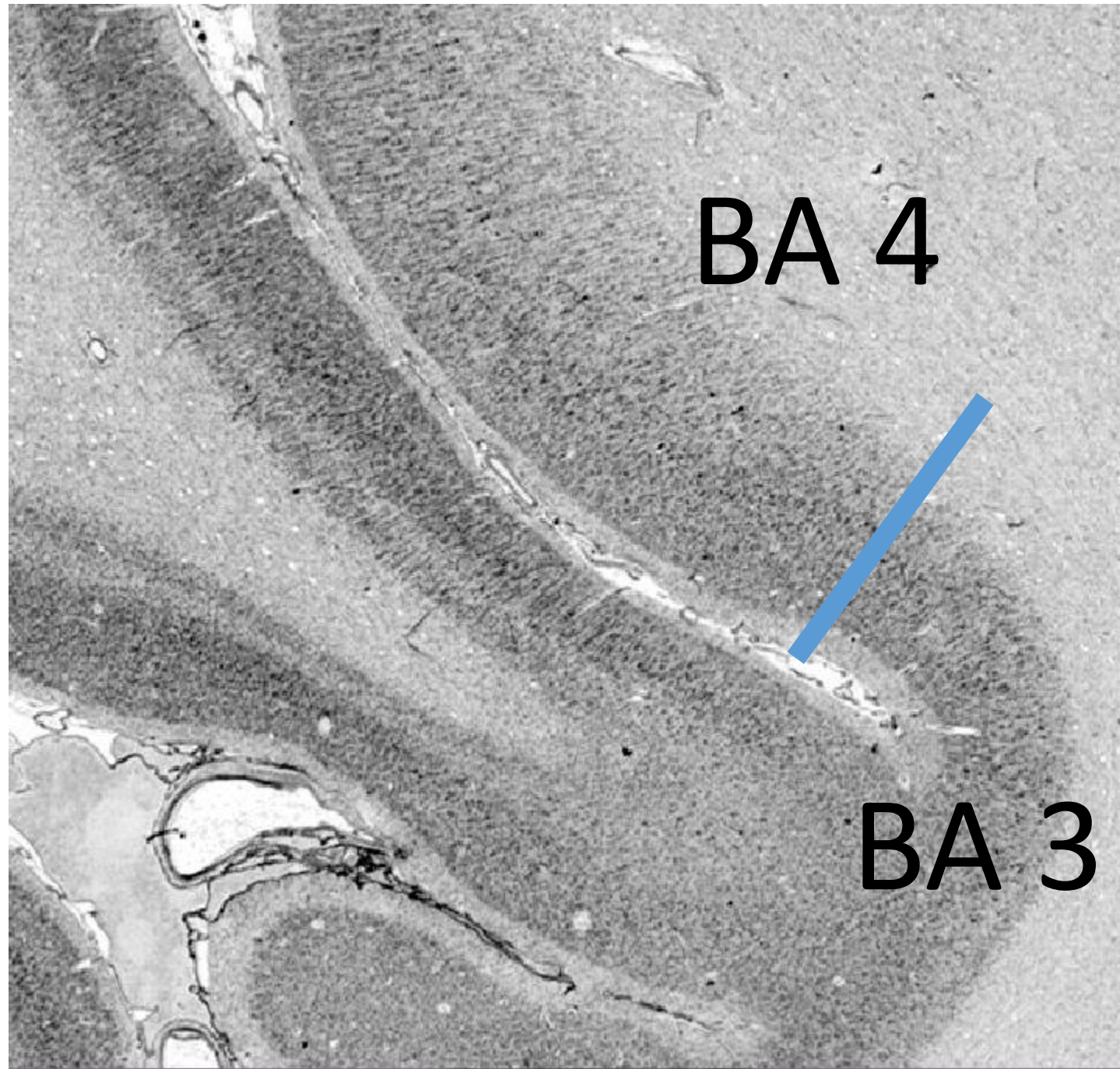
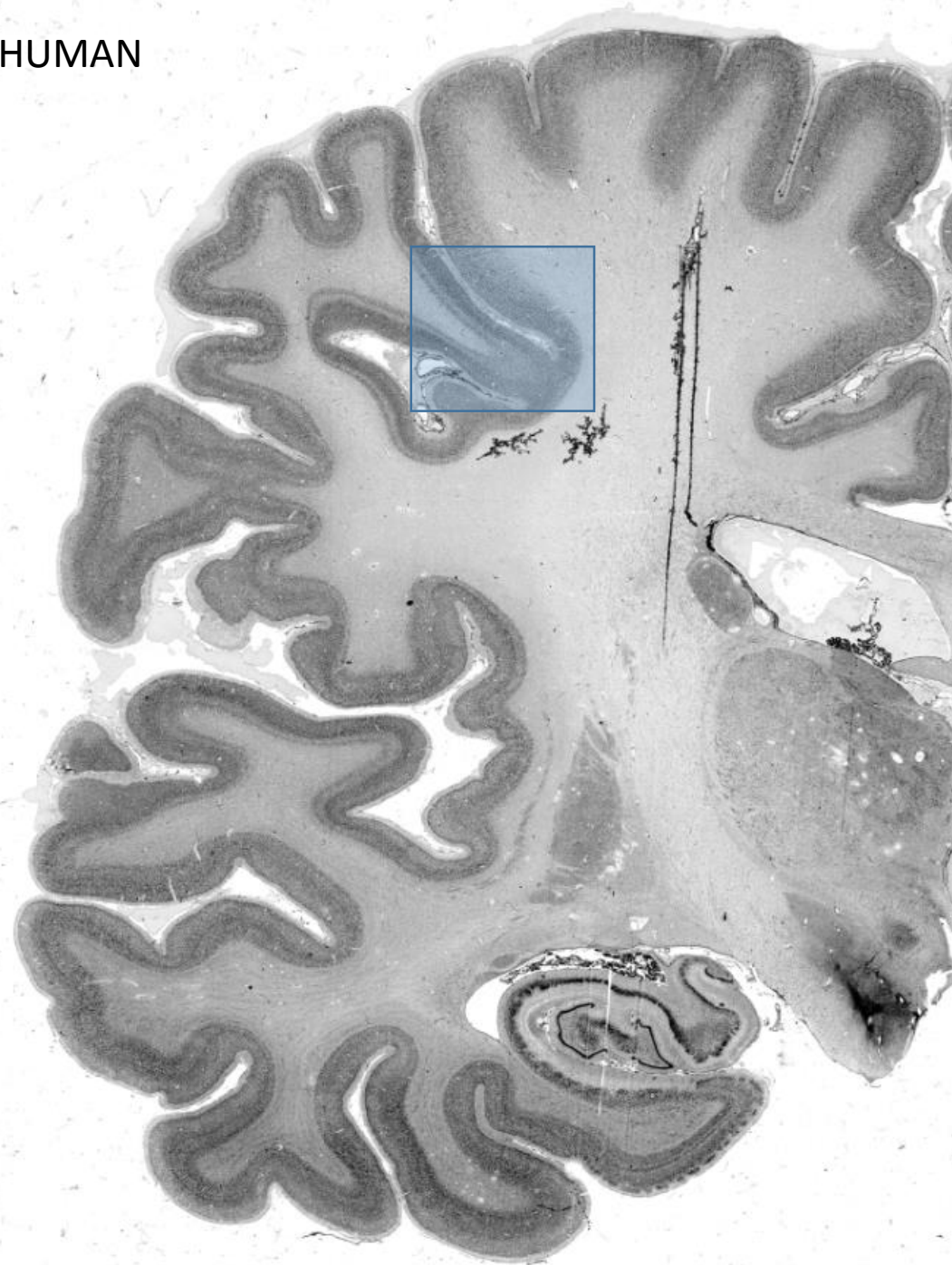
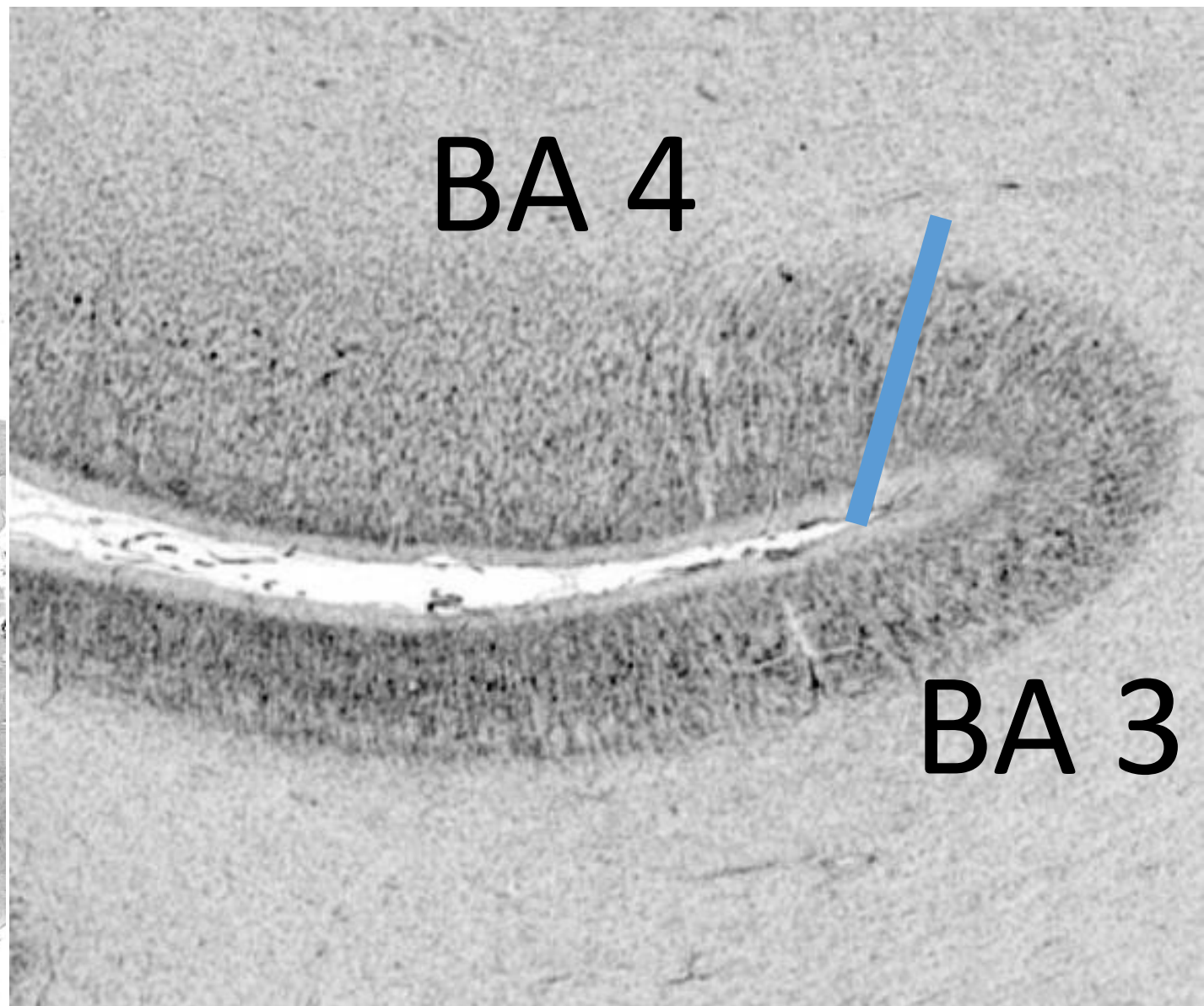
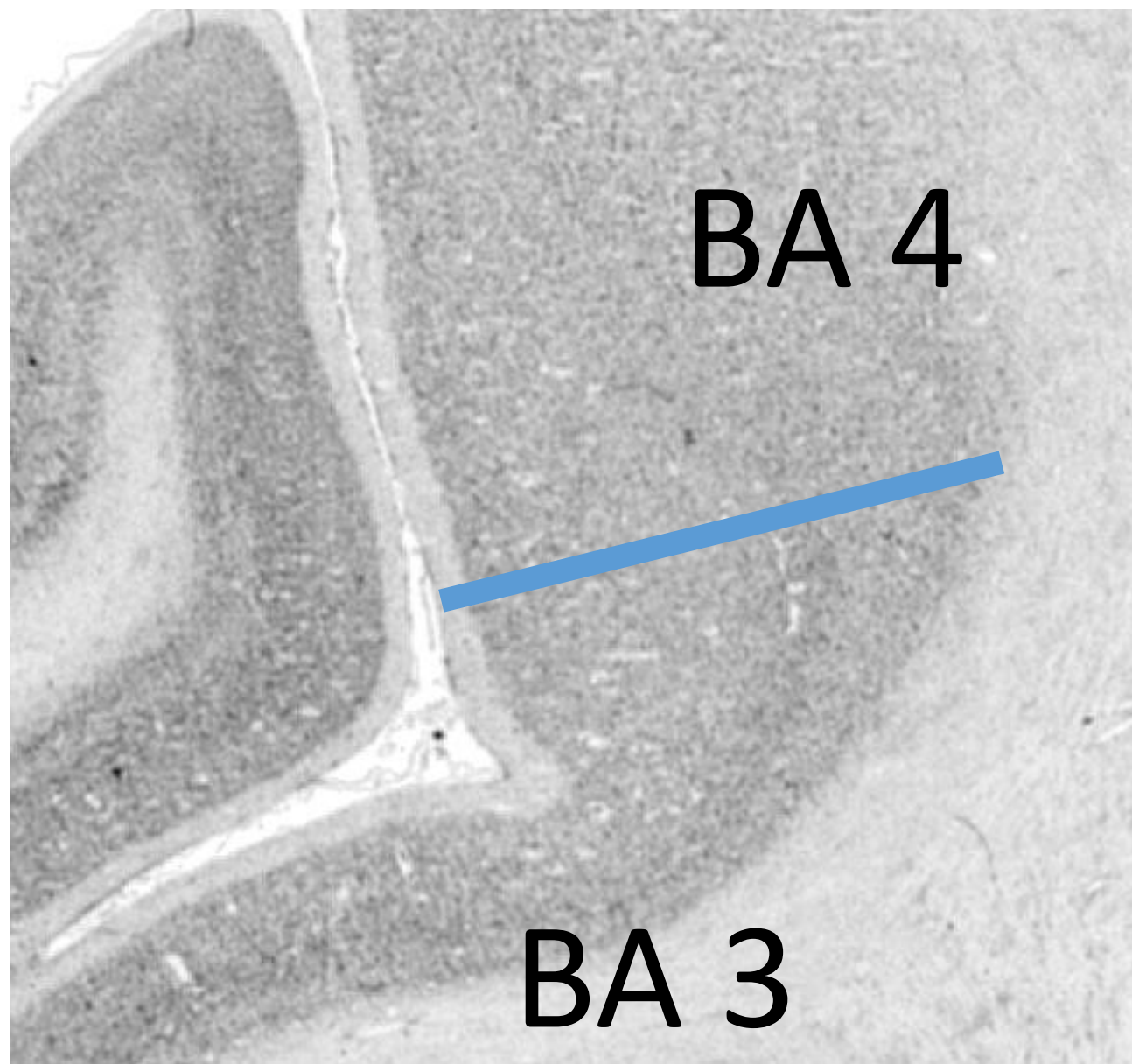
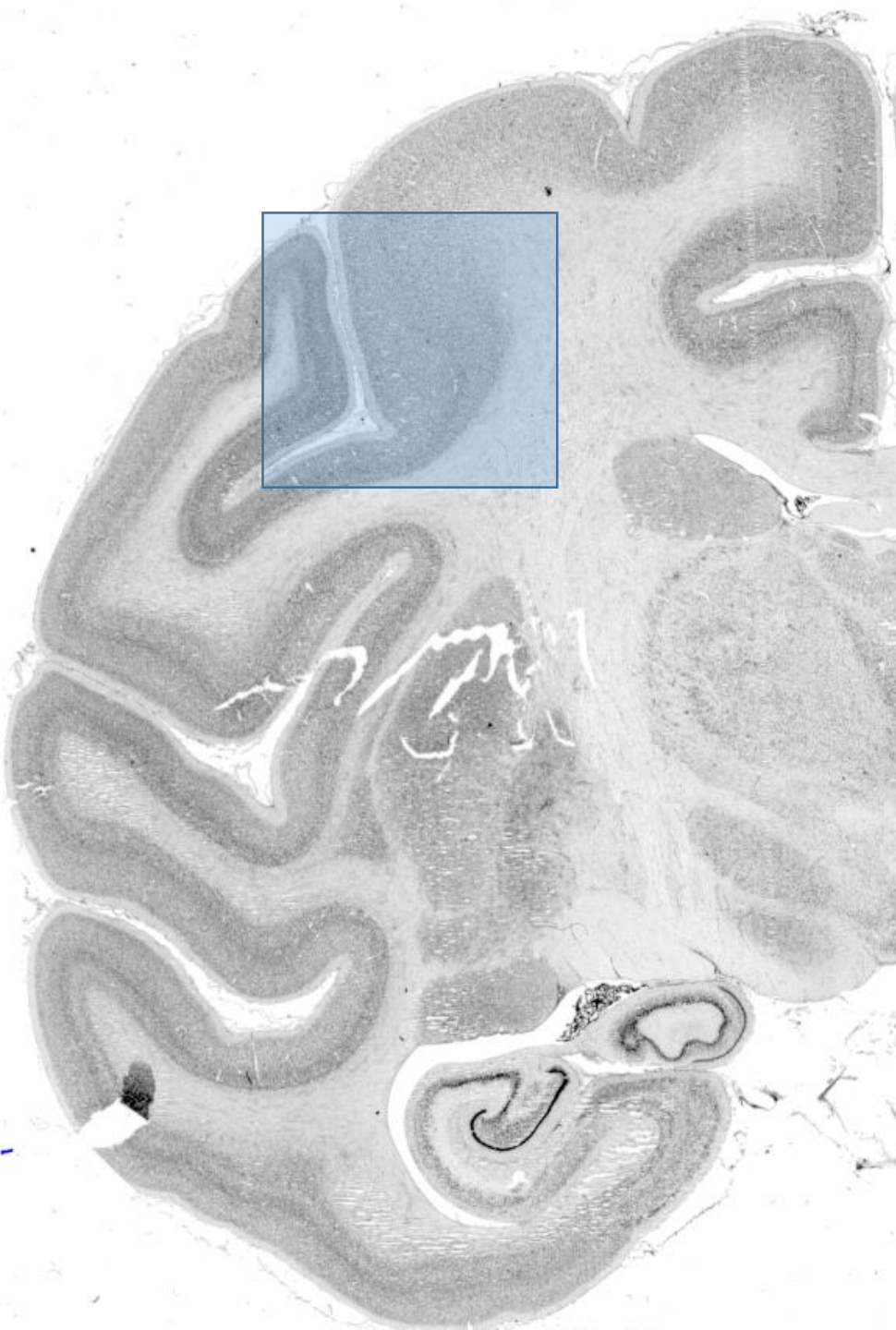


HUMAN



CHIMPANZEE





Supplementary material

Page 1: The prefrontal delineation procedure based on the cytoarchitectonic delineation of the frontal lobe in the Smaers dataset. For each individual, the cortical areas anterior to the border between area 3 and area 4 are delineated in each hemisphere using 20 equidistant sections. Cumulative volumes are computed for the 10 most anterior sections, and allometric trends are investigated at each interval. (a) and (b) indicate that 4th and 17th section interval of a human brain (c) dorsal view, (d) lateral view.

Pages 2-4: examples of the delineation of the border between area 3 and area 4 for a human, chimpanzee and macaque.