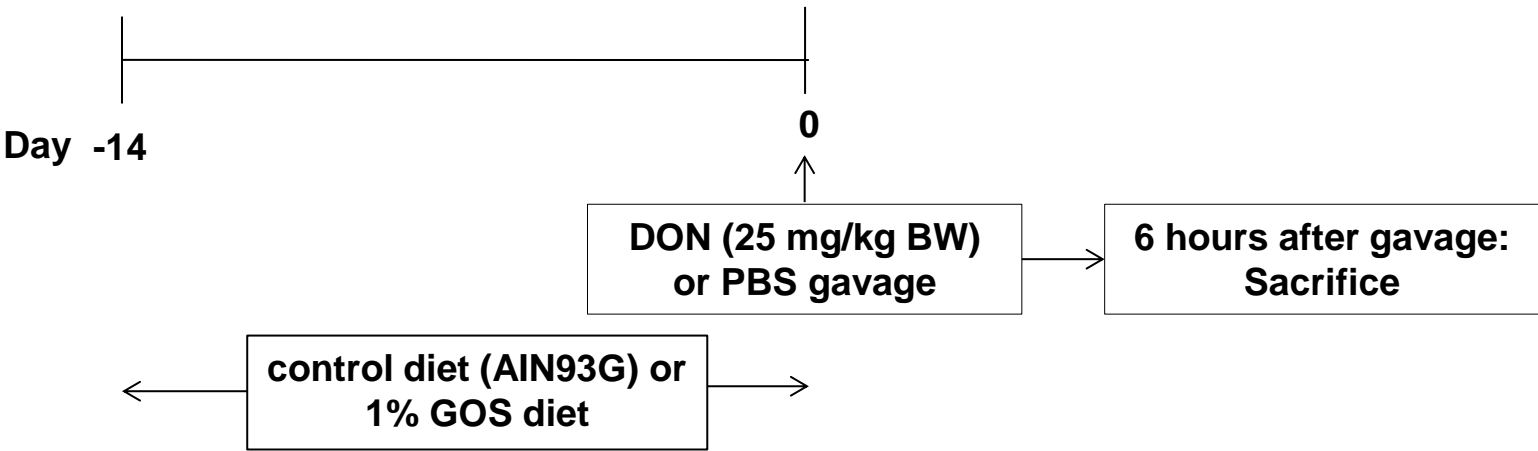
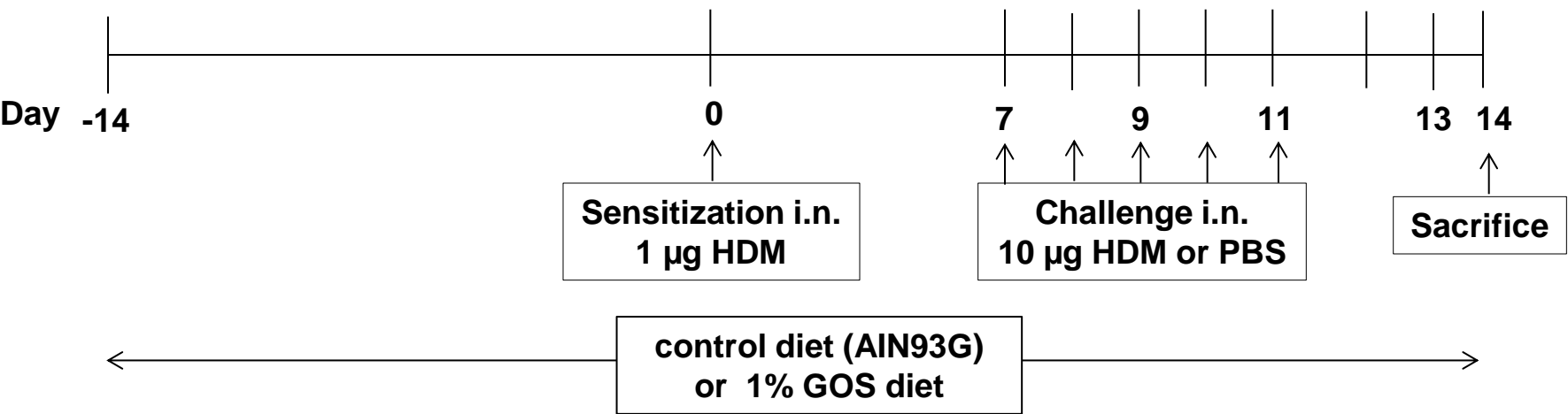


**Supplementary Figure 1**

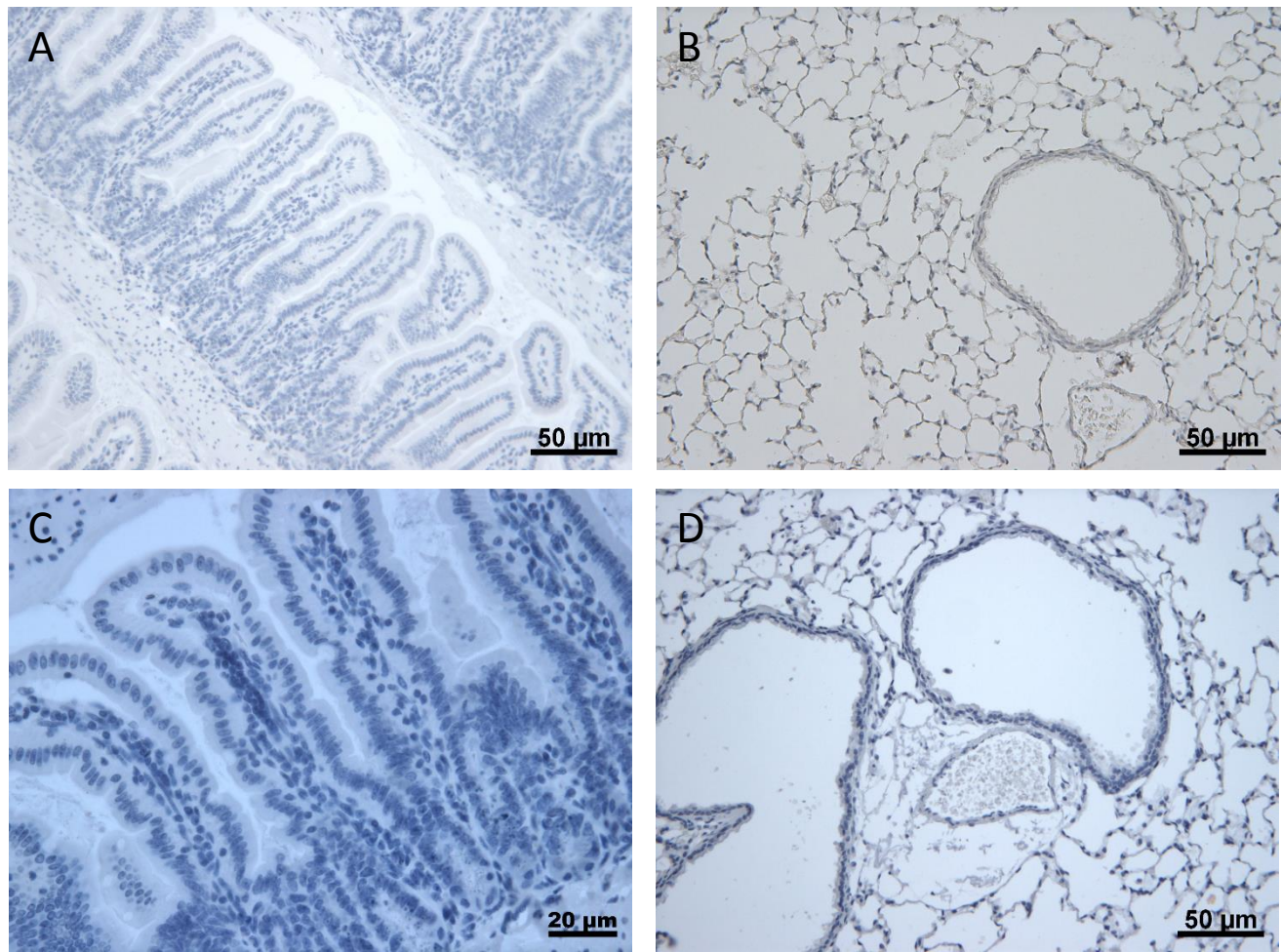
**Mouse model for intestinal barrier dysfunction:**



**Mouse model for house dust mite-induced allergic asthma:**



# Supplementary Figure 2



## Supplementary Figure 2. Negative controls immunohistochemistry

No staining was detected in negative controls, in which the primary antibody was omitted. A) negative control of IL-33 staining in distal small intestine, B) negative control of IL-33 staining in lungs, C) negative control of ST2 staining in distal small intestine, D) negative control of ST2 staining in lungs.