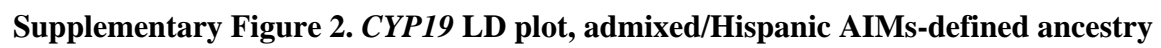
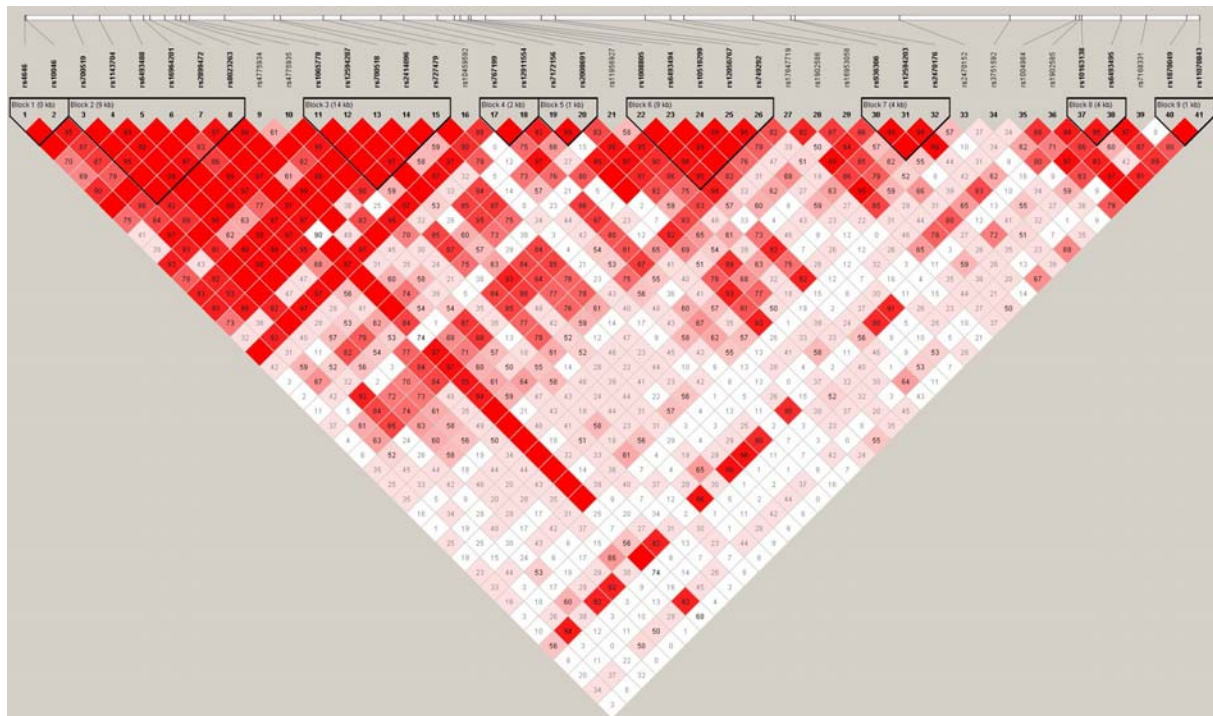


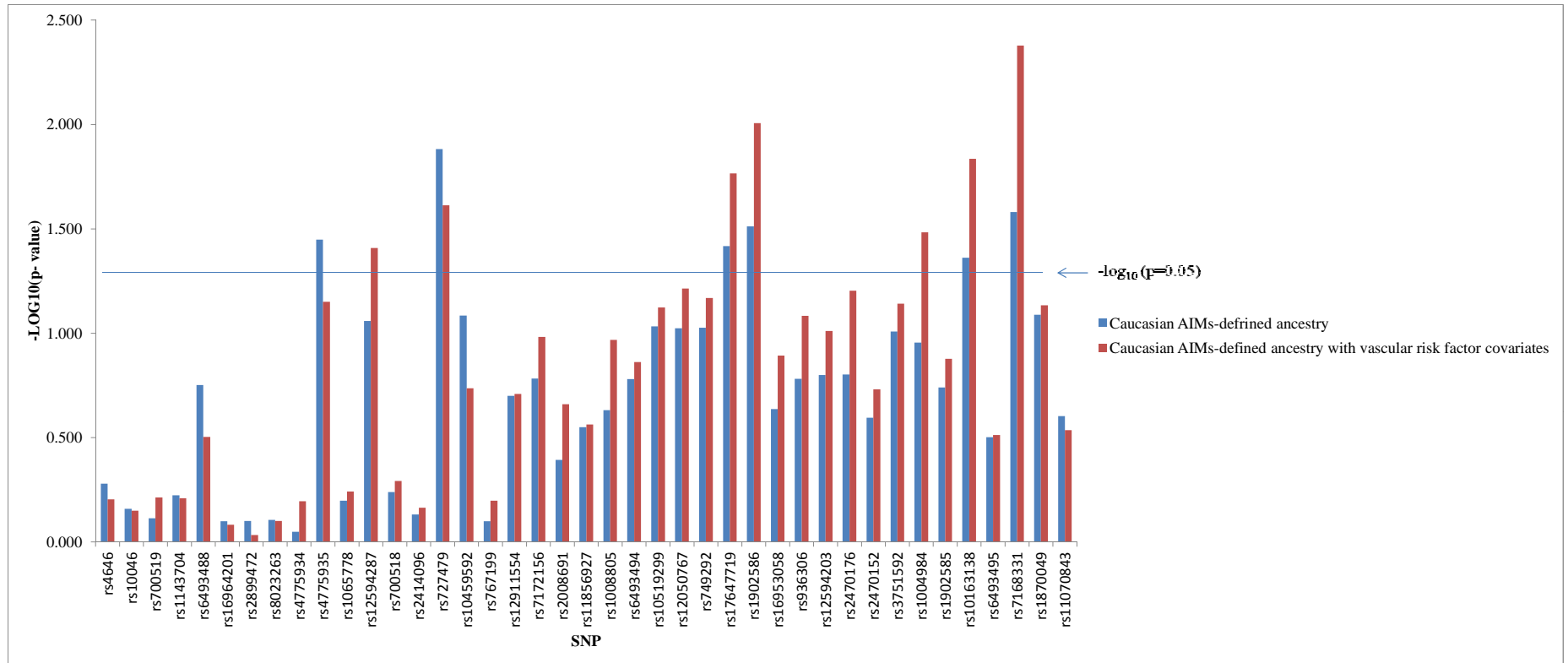
Supplementary Figure 1. *CYP19* LD plot, predominantly Caucasian AIMs-defined ancestry



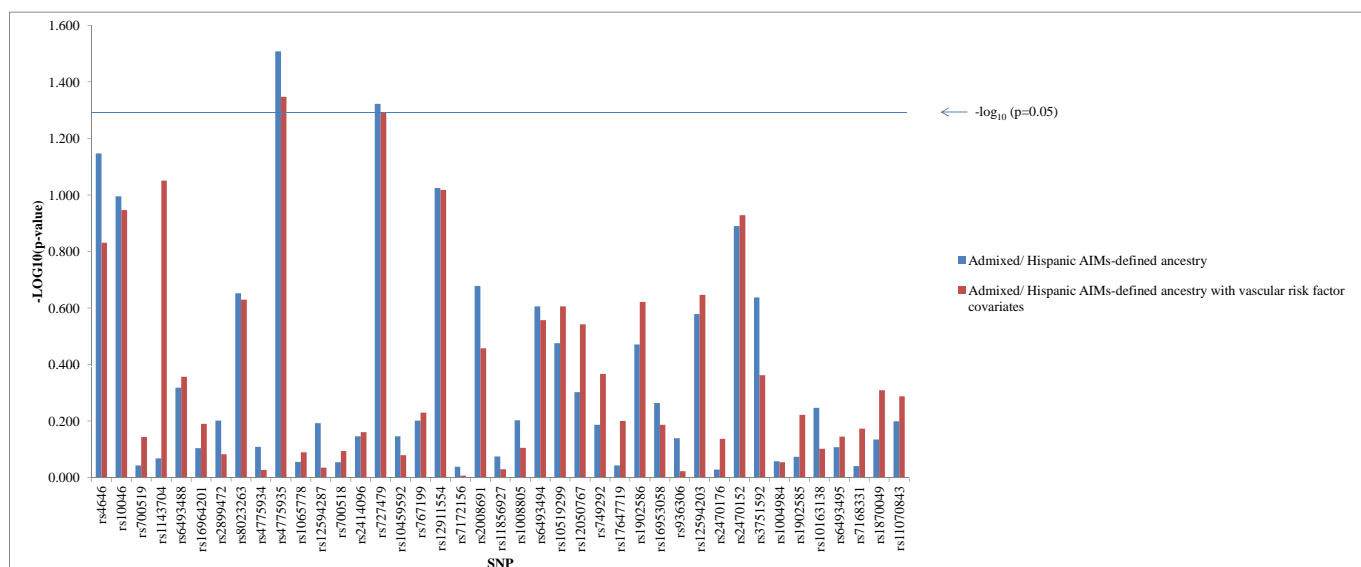
Supplementary Figure 2. *CYP19* LD plot, admixed/Hispanic AIMS-defined ancestry



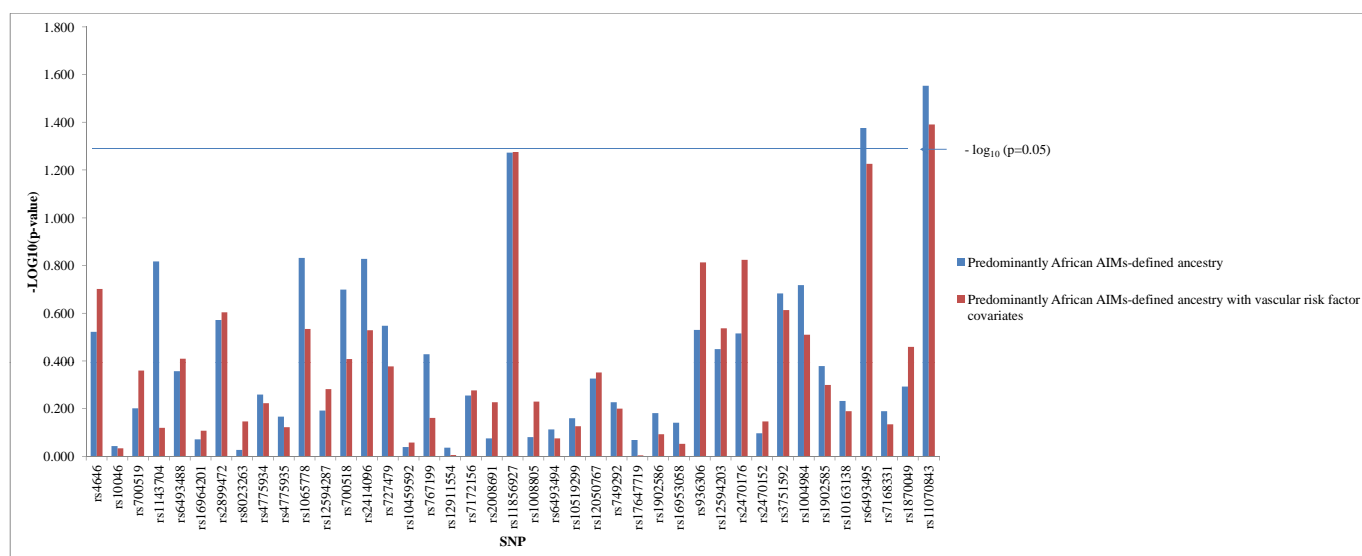
Supplementary Figure 3. *CYP19* LD plot, predominantly African AIMS-defined ancestry



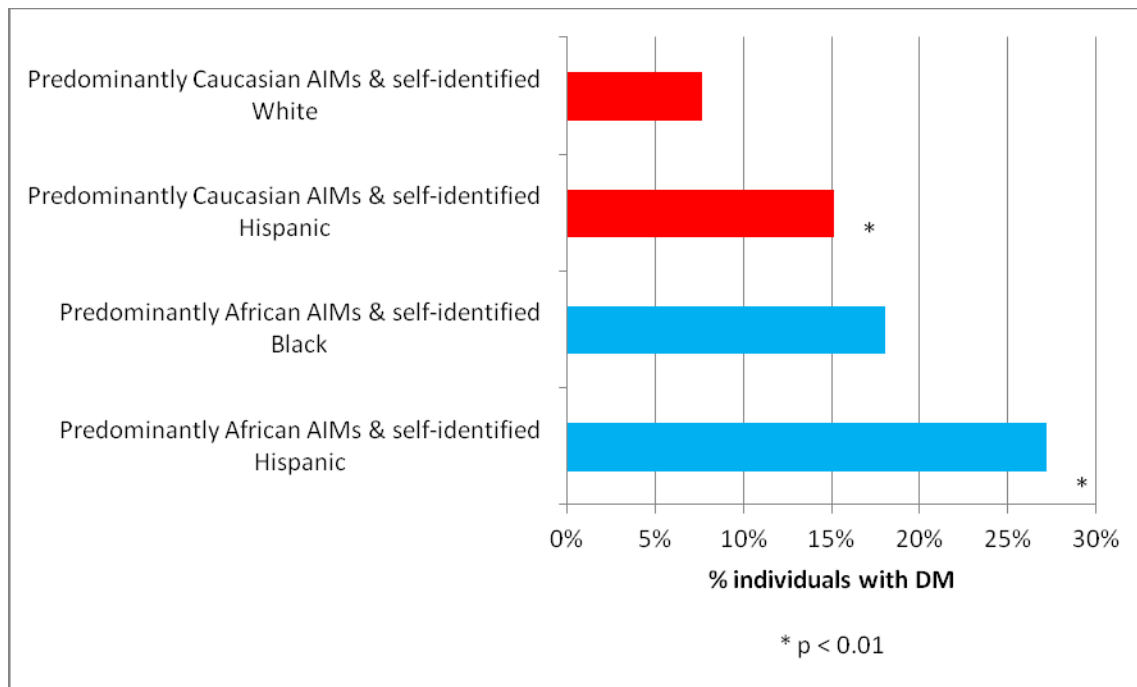
Supplementary Figure 4. Significant SNPs in women of predominantly Caucasian AIMS-defined ancestry, with and without vascular covariates



Supplementary Figure 5. Significant SNPs in women of admixed/ Hispanic AIMs-defined ancestry, with and without vascular covariates



Supplementary Figure 6. Significant SNPs in women of predominantly African AIMs-defined ancestry, with and without vascular covariates



Supplementary Figure 7. Proportion of AIMs-defined and self-identified ethnicity subgroups with history of diabetes mellitus