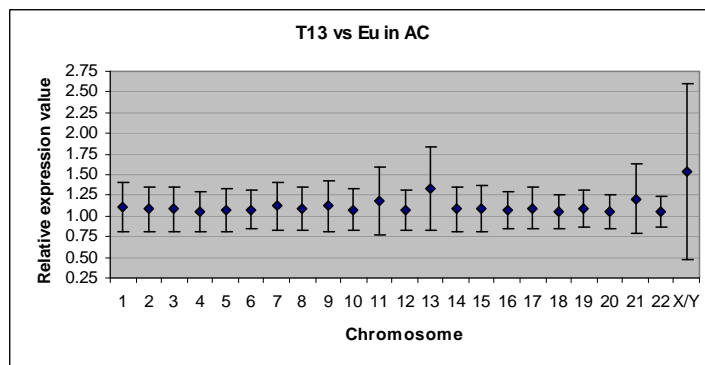
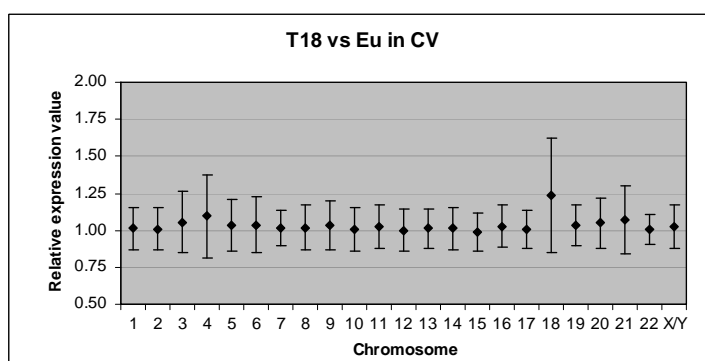


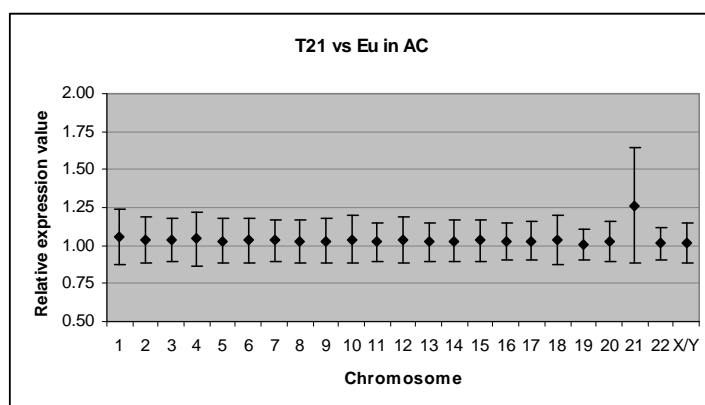
Supp figure 6: Relative mean expression values in the trisomy samples and the euploid control samples in each of the 22 plus X/Y chromosomes. The bold diamond represents the mean relative expression value for each chromosome and the solid vertical lines of the diamonds are the mean deviation. **A)** Trisomy 13 AC samples compared to AC euploid samples, **B)** Trisomy 18 CV samples compared to CV euploid samples, **C)** Trisomy 21 AC samples compared to AC euploid samples, **D)** Trisomy 21 CV samples compared to CV euploid samples.



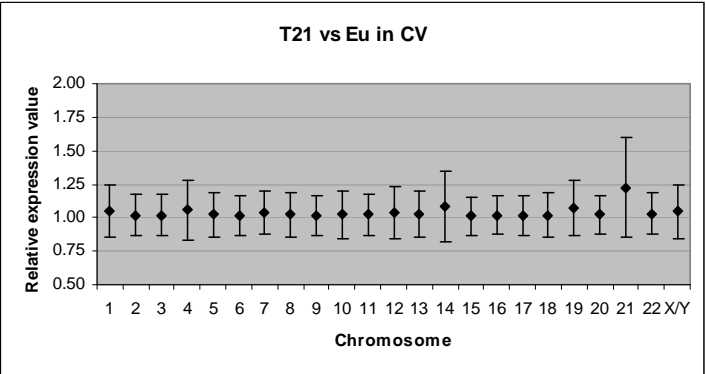
A



B



C



D