

Clinical and Translational Science and the UF Clinical and Translational Science Institute (CTSI)

Mike Conlon, PhD
Chief Operating Officer
UF Clinical and Translational Science Institute

For The Consortium

[e-Newsletter](#)

[Calendar](#)

[New Participant Q & A](#)

[Federated Access Q & A](#)

[Communication Toolkit](#)

[Governance](#)

[CTSA Committee Participants](#)

[Program Information](#)

[Consortium Leadership](#)

[Strategic Goal Committees](#)

[Key Function Committees](#)

Sharing a Common Vision

Mayo Clinic CTSA KL2 scholar Kaye Reid Lombardo, M.D. (center), a pancreatic cancer researcher, with two of her mentors, cancer epidemiologist Gloria Petersen, Ph.D. (right) and Michael Sarr, M.D., a Mayo investigator and gastroenterological surgeon. Photo courtesy of Mayo Clinic.

Image provided by the Mayo Clinic

[Learn More](#)

National Consortium Strategic Goals

Learn how the goals of the CTSA Consortium are being carried out by the Strategic Goal Committees.



[More](#)

Featured Institution

Weill Cornell Medical College (partnering with Hunter College)

Each month, this section highlights the activities of a

CTSA at a local level. View this month's feature and more in our featured institutions section.



Weill Cornell Medical College

[More](#)

The National Consortium Expands

NCRR announces the expansion of the National CTSA Consortium. More information, including the list of new members, can be found in the NIH News Release.



New Collaboration Opportunity Feature

A new feature providing opportunities for posting and participating in research collaborations is now available.



For The Public

[Building Connections](#)

[CTSA Fact Sheet](#)

[Media Information](#)

[Regional Consortia](#)

[Institution Search](#)

For Researchers

[Resources for Researchers](#)

[Collaboration Opportunities](#)

[CTSA Consortium Advances](#)

[Current RFA](#)

[CTSA Funding Guidelines](#)

CTSA Institutions

Find [CTSA Institutions](#) by state:

STRATEGIC GOALS

KEY FUNCTIONS

DIRECTLY-ALIGNED KEY FUNCTIONS

CROSS-CUTTING KEY FUNCTIONS

Build National
Clinical and Translational
Research Capability

Clinical Research
Management

Administration
Biostatistics/Epidemiology/
Research Design

Provide Training and
Career Development of
Clinical and
Translational Scientists

Education and
Career Development

Clinical Research Ethics
Clinical Research
Management
Communications

Enhance
Consortium-Wide
Collaborations

Informatics

Community Engagement
Comparative Effectiveness
Research

Improve the Health
of our Communities
and the Nation

Community
Engagement

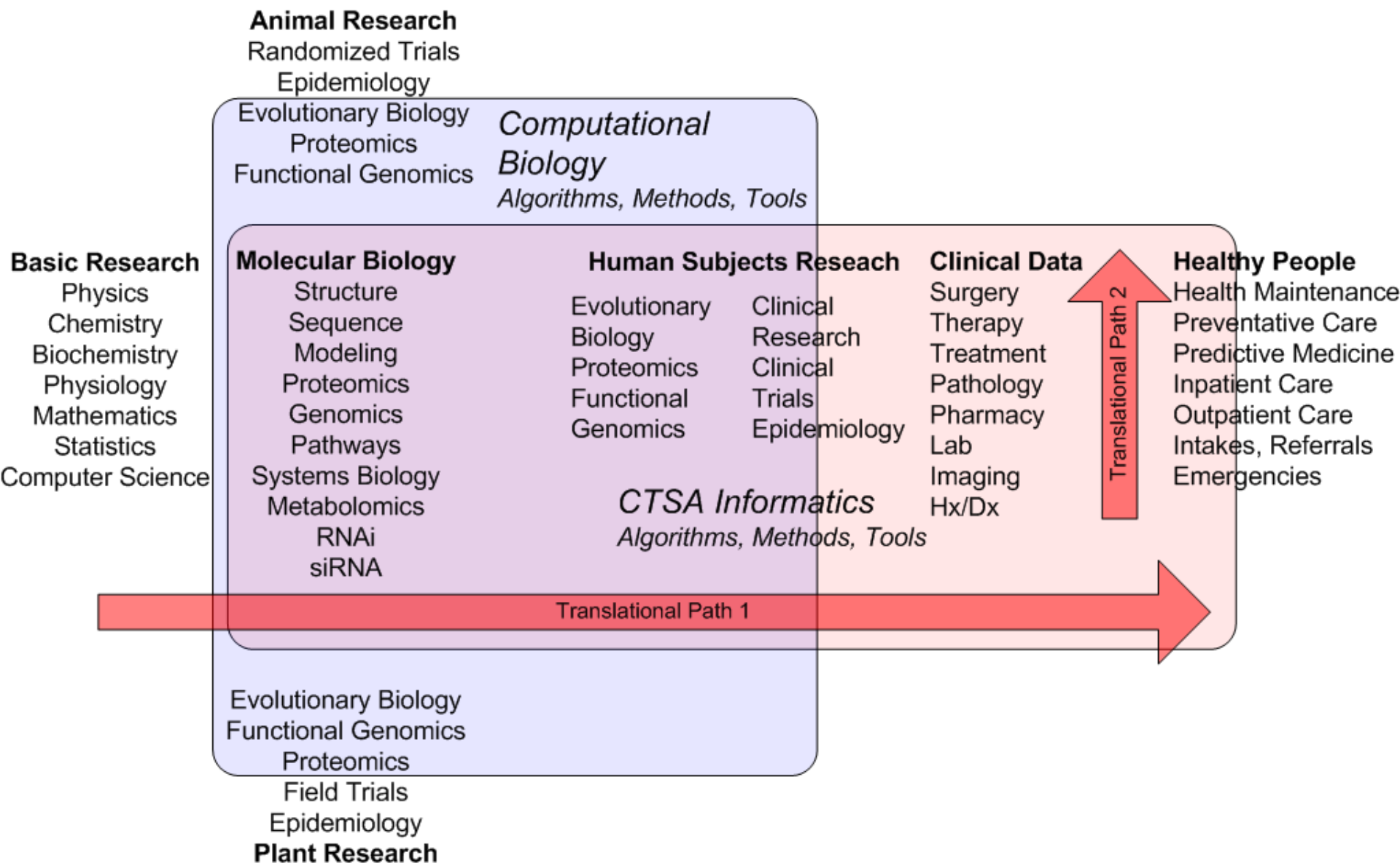
Education and Career
Development
Evaluation
Informatics

Advance T1
Translational
Research

Translational Public-
Private Partnerships

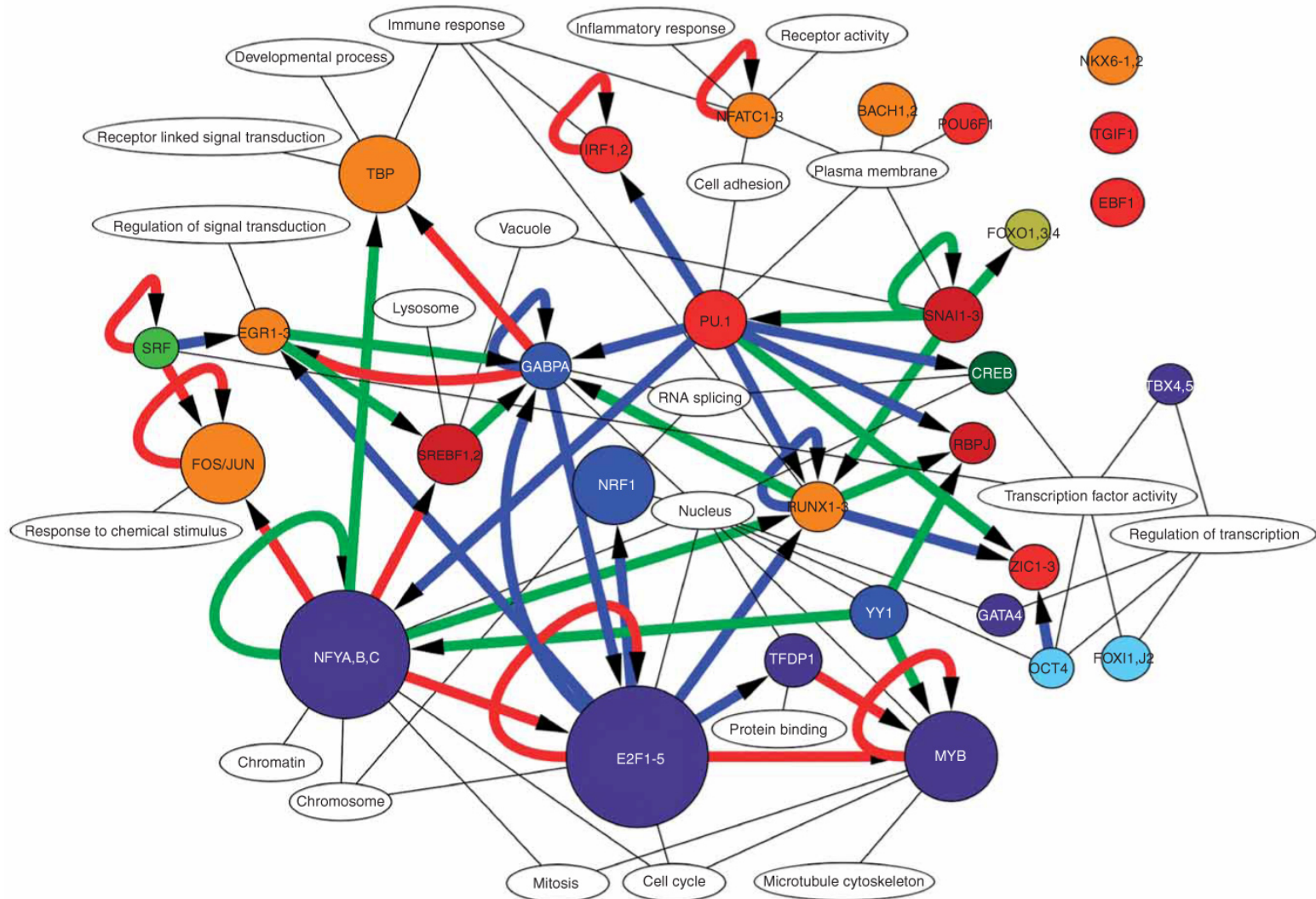
Public-Private Partnerships
Regulatory Knowledge
Translational

CTSA Steering &
Executive
Committees



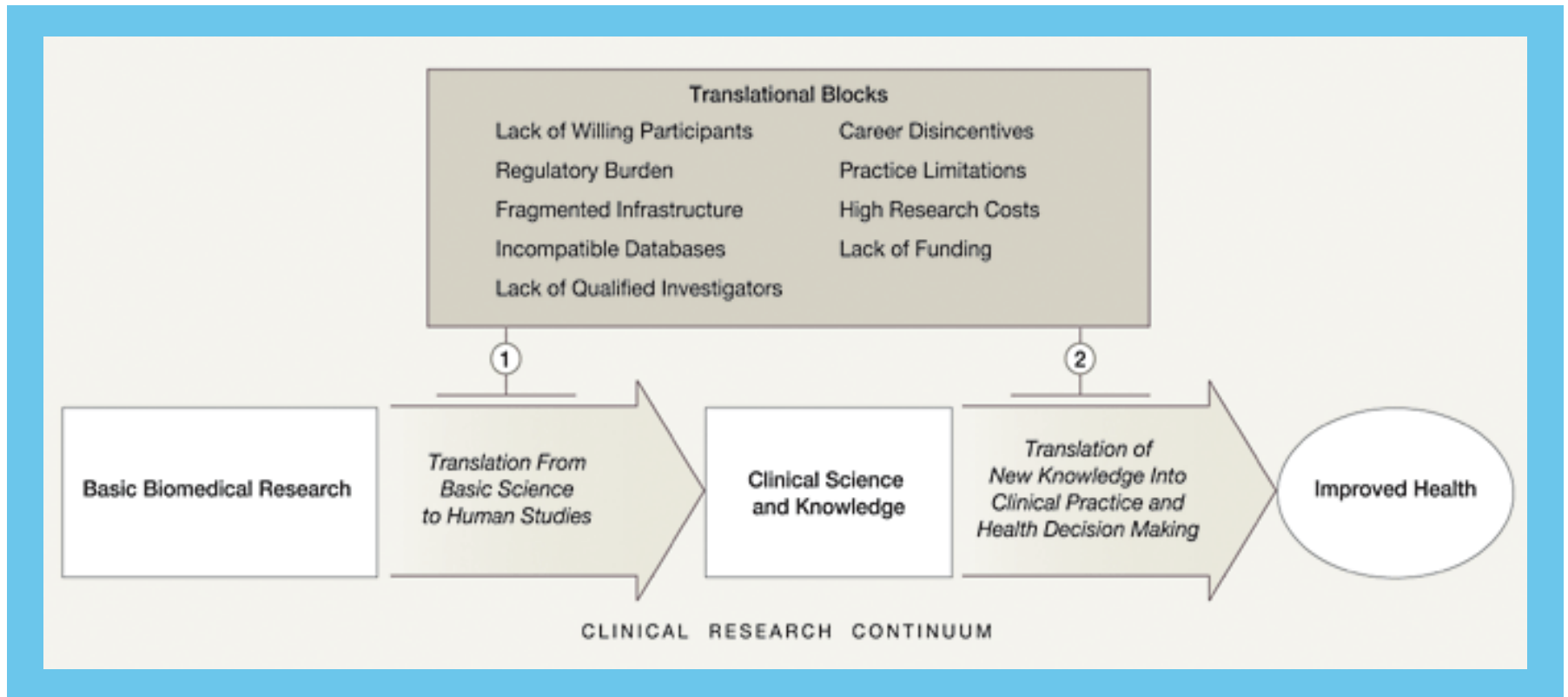


1. Large Biology Projects



The FANTOM Consortium & Riken Omics Science Center, **The transcriptional network that controls growth arrest and differentiation in a human myeloid leukemia cell line** *Nature Genetics* 41, 553 - 562 (2009)

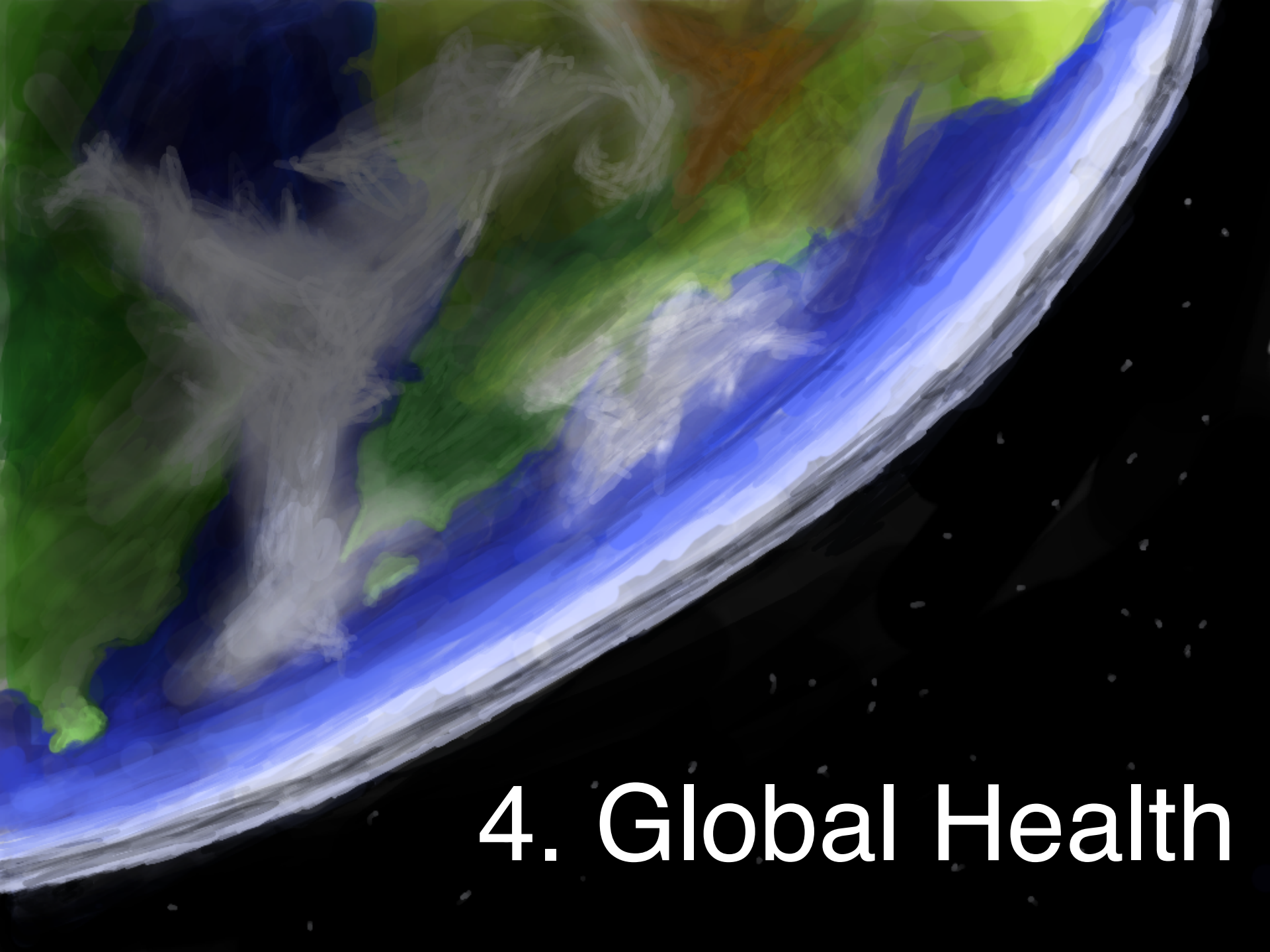
2. Translational Research



Sung, N. S. et al. JAMA 2003;289:1278-1287.

A photograph of President Barack Obama in a dark suit and blue striped tie, focused on signing a document with a black pen. He is surrounded by several staff members in professional attire, including a woman with glasses and a colorful scarf to his left, and a woman in a dark suit and white shirt to his right. The background is slightly blurred, showing a yellow curtain.

3. Health Care Reform including Comparative Effectiveness Research



4. Global Health



5. Empowering the Biomedical Research Community

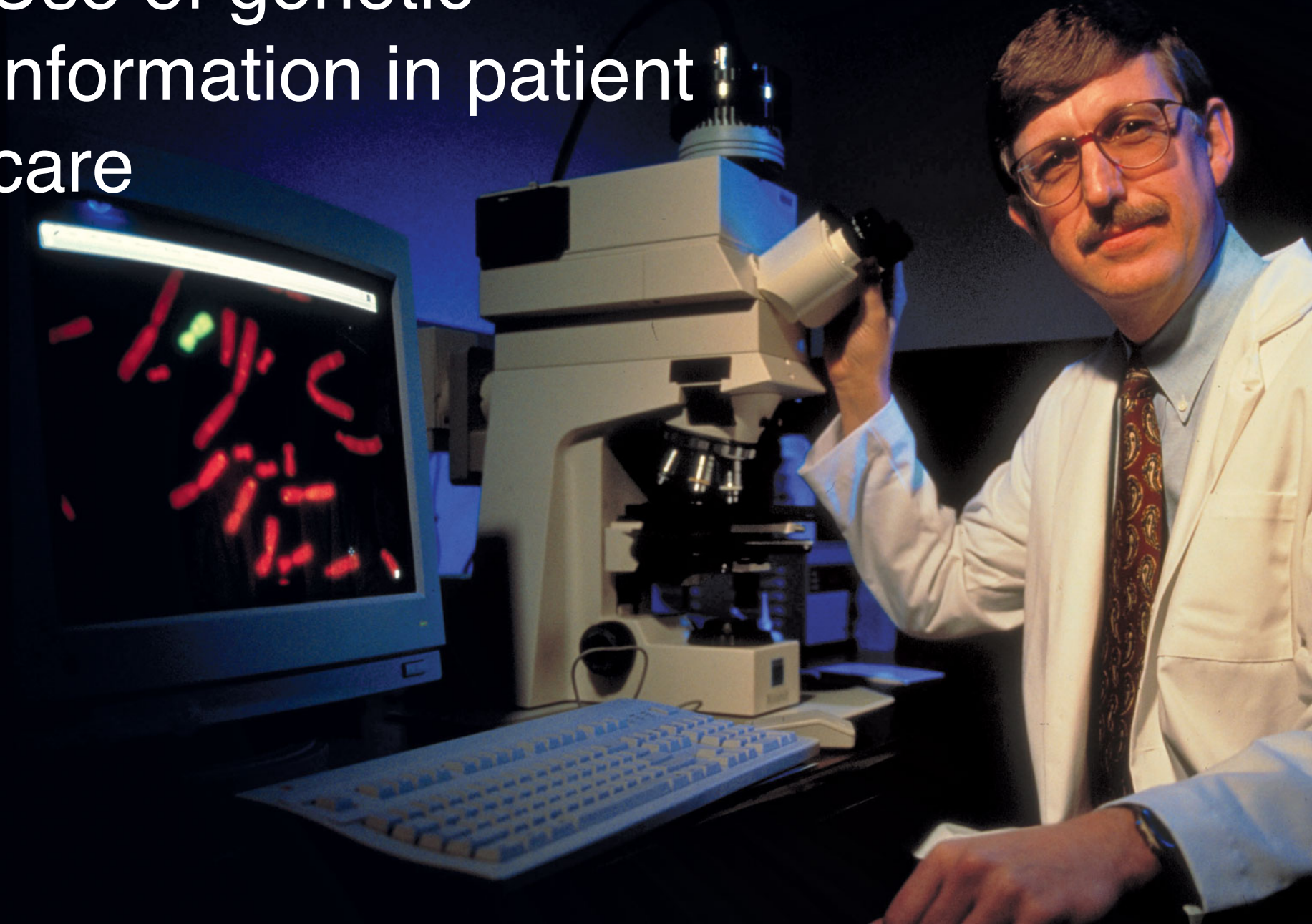


Integration of
research and care

Consent for research use of data

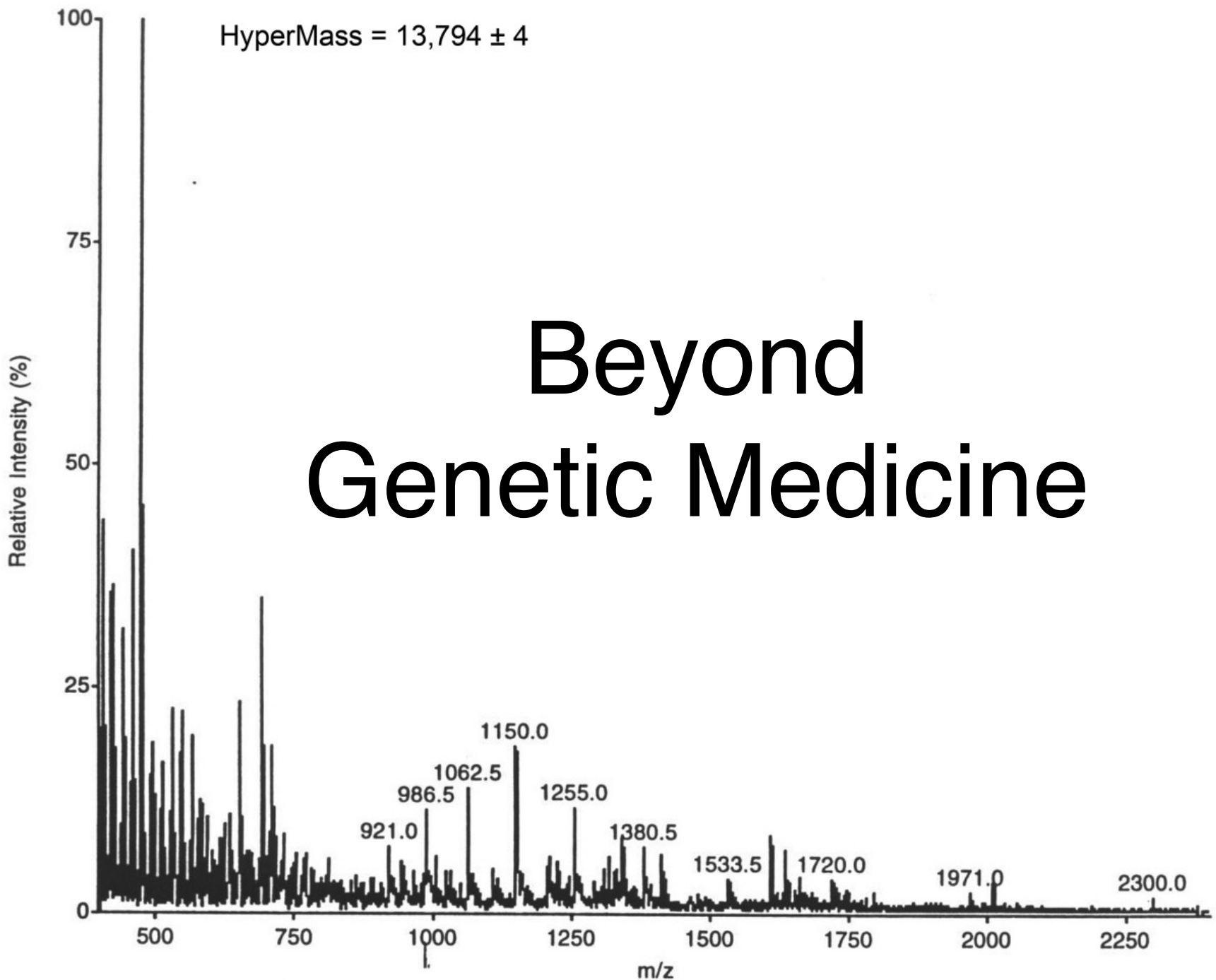


Use of genetic information in patient care





Integrated Data Repositories

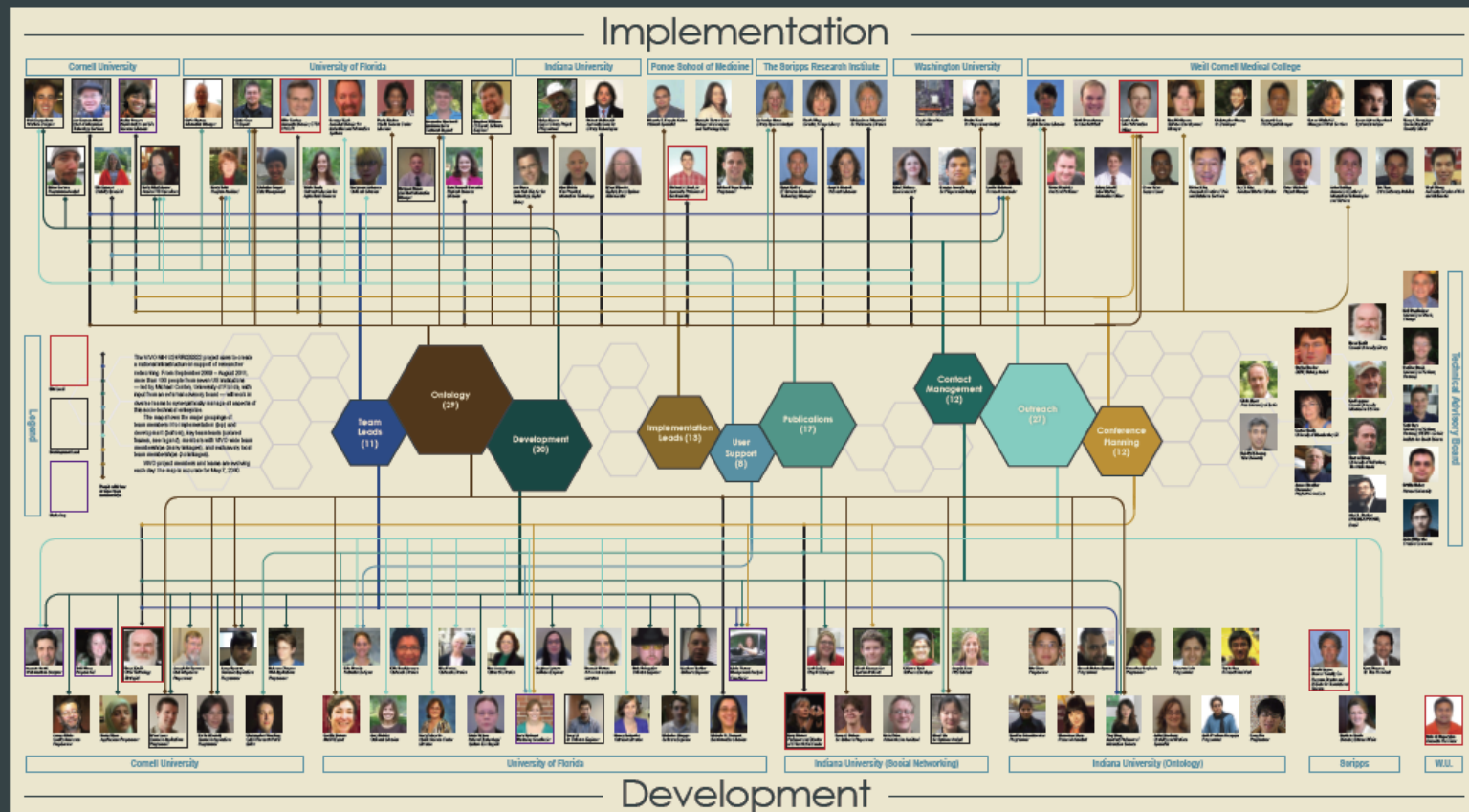


Increased Research Participation



Increased Research Collaboration

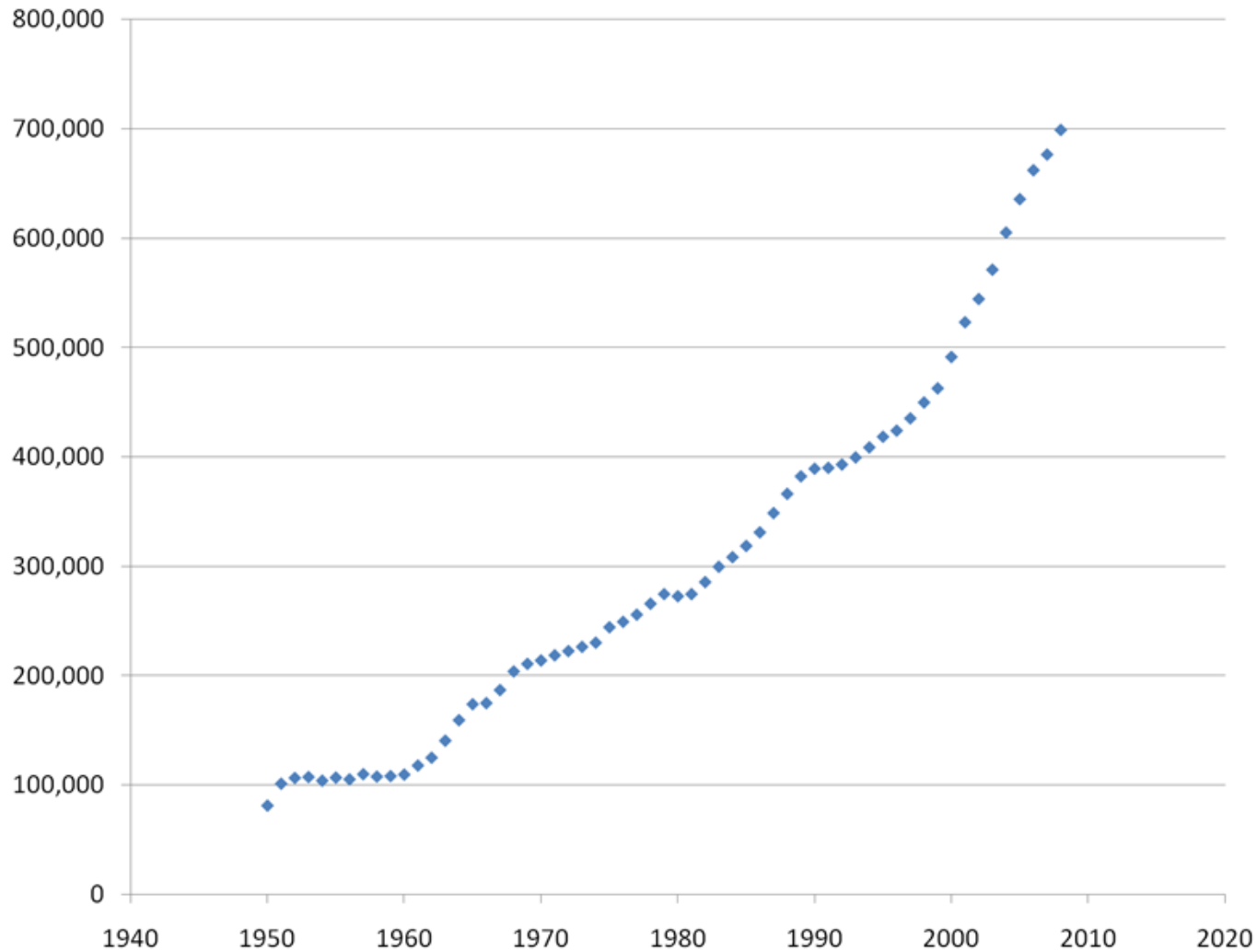
VIVO Enabling National Networking of Scientists Project Members and Teams



Please send comments and questions to [Jeni Coffey <coffeyj@indiana.edu>](mailto:Jeni.Coffey@indiana.edu) (design) and [Valrie L. Davis <vdavis@uflib.ufl.edu>](mailto:Valrie.L.Davis@uflib.ufl.edu) (data acquisition) and [Kathy Berner](mailto:Kathy.Berner@vivo.org) (concept). For more information, visit www.vivoweb.org.

2010.05.07

Increased Research Results



PubMed publications per year, 1950-2008

The UF Clinical and Translational Science Institute

- Dr. David Nelson, MD -- Director and Principal Investigator
- NIH CTSA award made to the University of Florida July 1, 2009
- 11 programs, 4 core labs, 13 clinical research units, 140 supported faculty, staff and students
- Mission: Improve human health by accelerating the translation of scientific discoveries into practical applications and practices for the diagnosis, treatment, prevention and cure of human diseases.

UF CTSI Programs

- Training and Professional Development
- Community Engagement
- Community Awareness
- Drug Development
- 4 Laboratory Cores –
biorepository,
biobehavioral,
genotyping,
metabolomics
- Regulatory Knowledge
and Research Support
- Informatics
- Biostatistics
- Ethics
- Pilot Projects
- 13 Clinical Research
Units, including the UF
Clinical Research
Center

UF CTSI Services

Pilot Project Funding
Seminar Series
Community Engagement
Advisory Board
Mentor Program
TL1 Pre-doctoral training
KL2 Junior Faculty
APPCI
Master of Science in CTS
Research Coordinator Training
CTSI Biorepository*
Targeted Metabolomics lab

Genotyping Services
Biobehavioral Instruments
Research Project Navigators
ResearchMatch
REDCap
Study Registry*
CTSI Research Portal
Research Design
Research Data Analysis
Ethics Consults
Jacksonville CRU
Global Metabolomics Lab

UF Clinical Research Center
Cardiovascular CRU
Phase 1/2 CRU
GI/Liver CRU
AG Holley CRU
VA Clinical Research Unit
Neuropsychology CRU
Periodontal DRC CRU
Sleep Lab CRU
Aging Institute CRU
Pain CRU
Workshop support

* = under construction

UF CTSI Projects

- Epic and Research
- UF/FSU clinical network
- Clinical and Translational Research Building
- Facilitate access to REDCap
- Develop biorepository core services
- Build out metabolomics core
- Create Tracking and Evaluation processes
- Create a study (and clinical trial) registry
- Create single research services price list

Clinical and Translational Science Building (Spring 2013)



CTSI Biorepository

- New facility for tissue and blood storage
- Robotic freezer
- Specimen registry
- 1.5 M sample capacity
- 40% of capacity will be used via consolidation of existing sample collections (Aging, Urology, Cancer)
- \$1.3M investment
- Available fall 2010

CTSI REDCap

- REDCap – Research Electronic Data Capture
- Web-based case report forms and visit calendar
- Developed at Vanderbilt
- On-line training
- CTSI REDCap facilitators
- No charges for use
- <http://redcap.ctsi.ufl.edu>



Q&A

- For more info, please visit the CTSI Research Portal at <http://www.ctsi.ufl.edu>
- Or call 273-8700
- Or email Mike Conlon, mconlon@ufl.edu