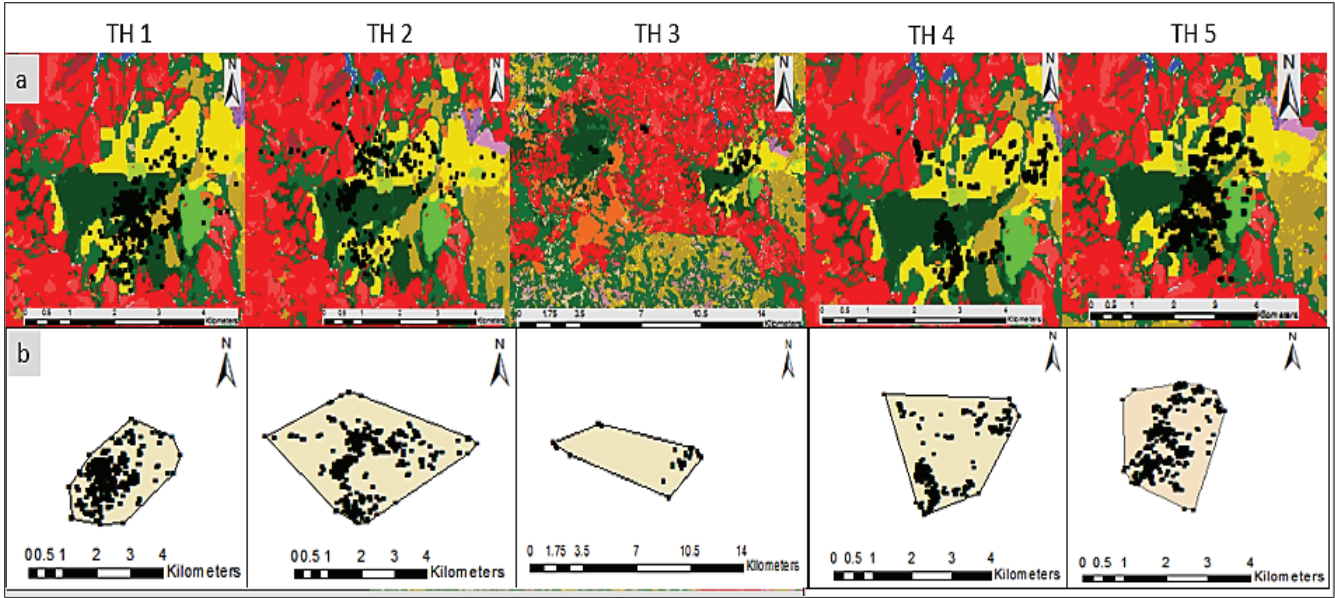


# Supplementary Information

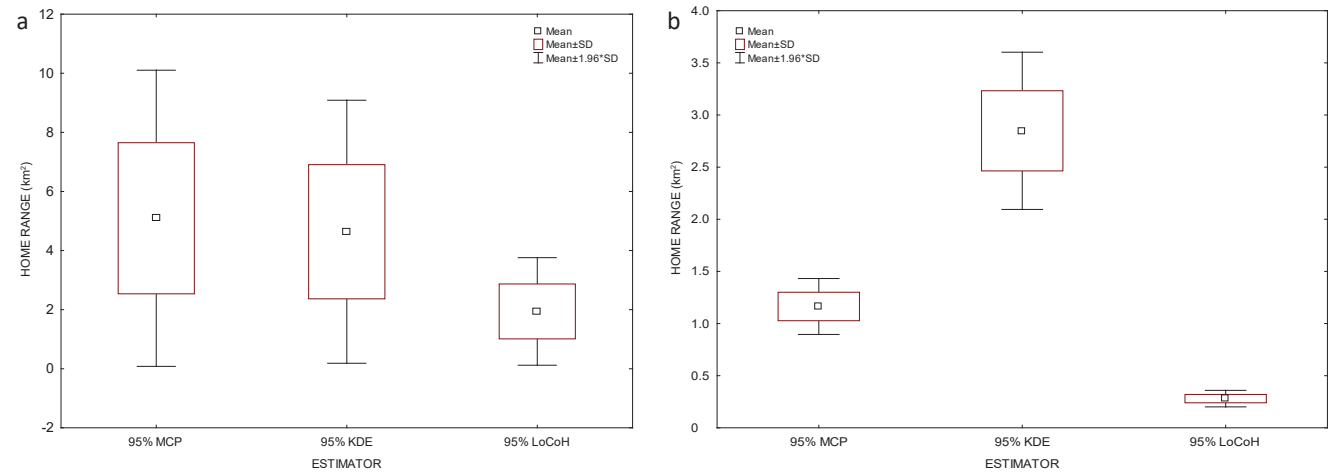
## Home range and habitat use of Trumpeter Hornbills *Bycanistes bucinator* in an urban–forest mosaic, Eshowe, South Africa

Moses Chibesa, Barry Taylor, Tharmalingam Ramesh and Colleen T Downs  
Ostrich 2017, 88(3): 225–233. DOI: 10.2989/00306525.2017.1292561

**Figure S1:** GPS fixes digitised on the land use map showing different habitats (dark green = indigenous forest, light green = thickets, red = cultivated cane commercial, pink = cultivated subsistence, yellow = urban, blue = water body, mustard = communal villages and lands) visited by each individual tagged (a) and the 100% minimum convex polygon (MCP) home range size to show the total area covered by each individual for the entire tracking period (b). The 100% MCP estimated for each individual was 4.9 km<sup>2</sup> (TH 1), 12.8 km<sup>2</sup> (TH 2), 12.8 km<sup>2</sup> (TH 3), 5.0 km<sup>2</sup> (TH 4) and 4.8 km<sup>2</sup> (TH 5). Six habitat types used were identified based on the proportion of GPS fixes falling in each habitat within the 100% MCP home range size for each individual (see Figure 2)



**Figure S2:** Comparison of three different home range estimation methods (95% minimum convex polygon [MCP] kernel density estimation [KDE] and local convex hull [LoCoH]) of overall home ranges (a) and monthly home ranges (b) of Trumpeter Hornbills ( $n = 4$ ) in the urban–forest mosaic of Eshowe, South Africa



**Table S1:** Summary statistics of the monthly distance moved by each of the five Trumpeter Hornbills tagged in the urban–forest mosaic of Eshowe, South Africa

Individual ID	Month	Mean (km)	No. of GPS fixes	Sum (km)	Std.Dev(km)	Std. Err (km)	Min (km)	Max (km)
1	Mar	0.370	97	35.859	0.394	0.040	0.003	1.287
	Apr	0.617	113	69.716	0.493	0.046	0.002	1.681
	May	0.345	120	41.381	0.277	0.025	0.005	1.398
	Jun	0.301	117	35.259	0.234	0.022	0.003	1.082
	Jul	0.257	120	30.813	0.187	0.017	0.001	0.699
	Aug	0.377	117	44.120	0.335	0.031	0.004	1.450
	Sep	0.749	112	83.942	0.440	0.042	0.003	1.733
	Oct	0.772	63	48.616	0.474	0.060	0.012	2.013
2	Mar	0.744	95	70.675	0.744	0.076	0.008	2.478
	Apr	0.718	114	81.852	0.725	0.068	0.004	2.751
	May	0.599	116	69.513	0.593	0.055	0.000	2.352
	Jun	0.729	115	83.812	0.782	0.073	0.002	3.920
	Jul	0.592	121	71.644	0.490	0.045	0.002	1.881
	Aug	0.840	115	96.544	0.661	0.062	0.001	2.293
	Sep	1.049	105	110.109	0.916	0.089	0.004	5.940
	Oct	1.025	76	77.899	0.580	0.066	0.005	2.583
3	Mar	0.913	35	31.947	0.950	0.161	0.010	3.268
4	Mar	0.745	77	57.372	0.663	0.076	0.011	2.050
	Apr	0.608	116	70.557	0.559	0.052	0.004	2.388
	May	0.246	118	29.021	0.271	0.025	0.002	0.993
	Jun	0.290	117	33.958	0.288	0.027	0.003	0.991
	Jul	0.395	122	48.140	0.316	0.029	0.003	1.040
	Aug	0.368	120	44.120	0.282	0.026	0.002	0.858
	Sep	0.590	113	66.694	0.585	0.055	0.003	2.421
	Oct	1.272	67	85.237	0.913	0.112	0.009	2.679
5	Mar	0.668	86	57.427	0.464	0.050	0.002	1.680
	Apr	0.705	113	79.718	0.578	0.054	0.003	1.685
	May	0.578	119	68.729	0.453	0.042	0.003	1.443
	Jun	0.580	116	67.337	0.475	0.044	0.001	1.541
	Jul	0.522	121	63.144	0.401	0.036	0.001	1.530
	Aug	0.477	121	57.735	0.372	0.034	0.003	1.322
	Sep	0.588	119	69.995	0.339	0.031	0.010	1.558
	Oct	0.935	65	60.756	0.442	0.055	0.007	1.637