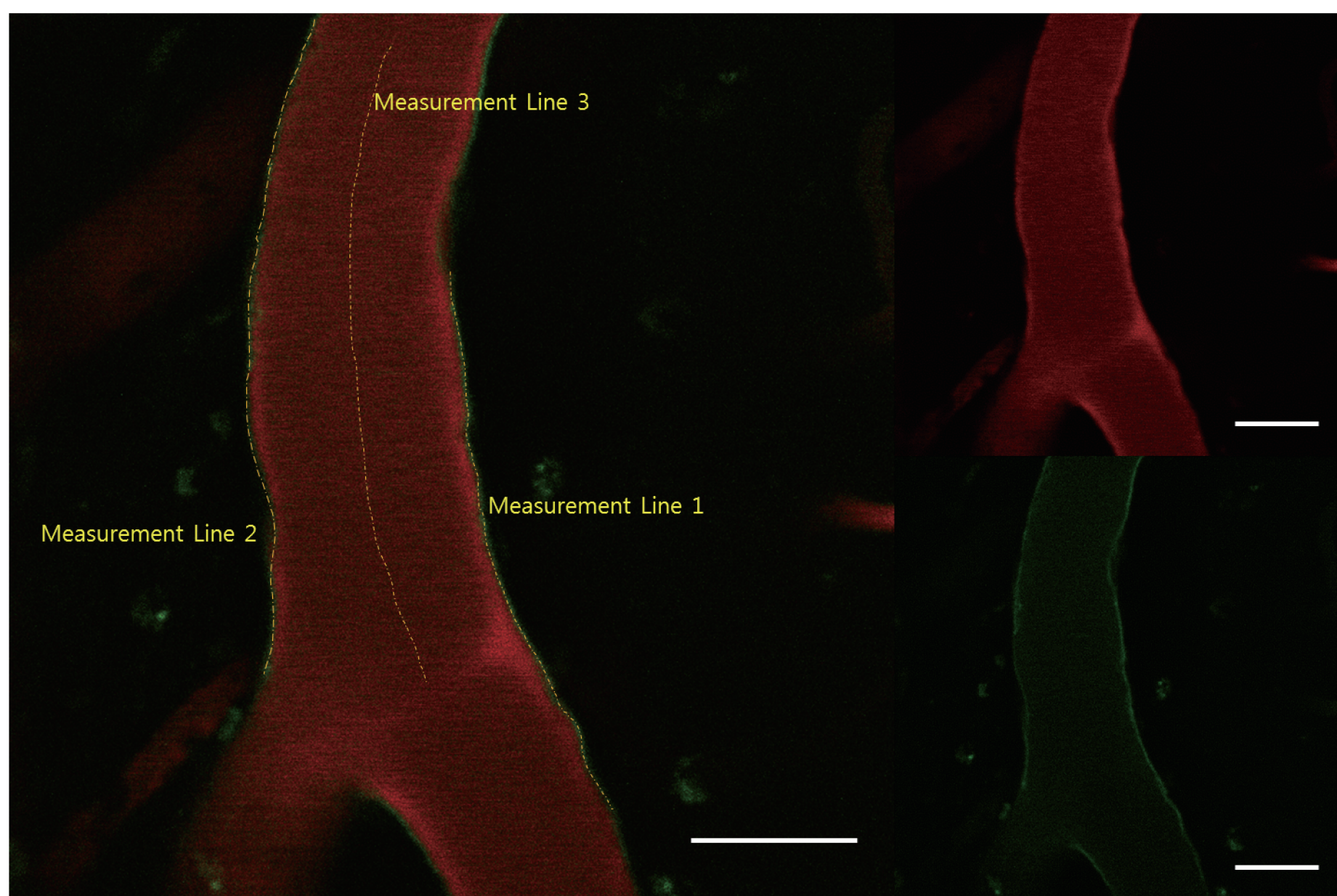
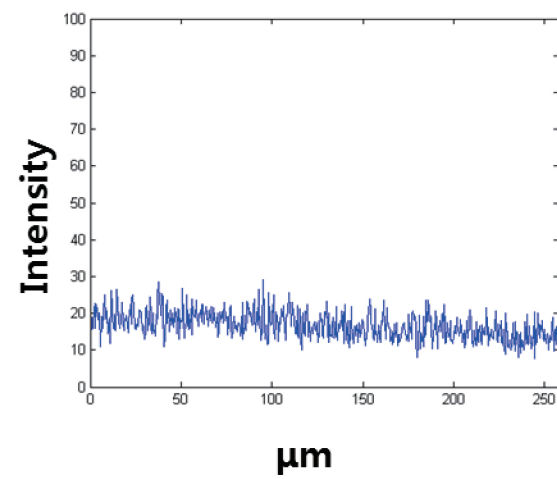
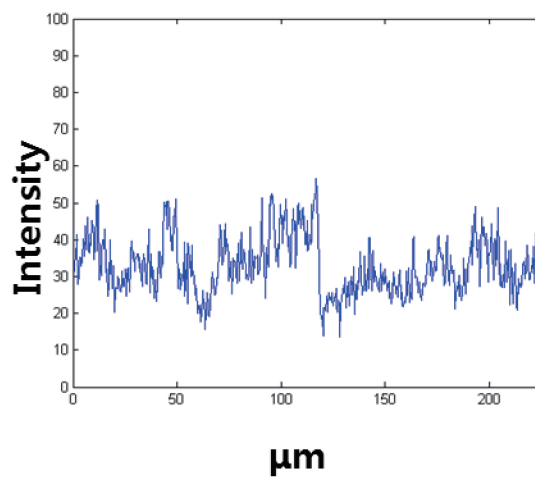
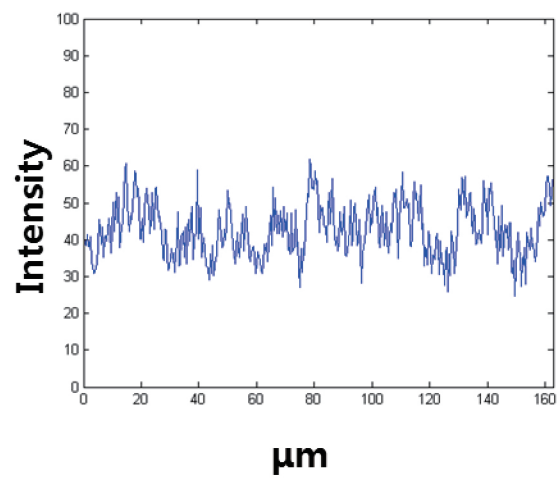


**A****B**

Supplementary Fig 3. Representative two-photon laser scanning microscopy (TPLSM) image of the cerebral endothelial glycocalyx layer tagged with fluorescein isothiocyanate-wheat germ agglutinin (FITC-WGA). A: A representative arteriole TPLSM image. The intensity profile of WGA-lectin is measured along the three measurement lines. B: The WGA-lectin intensity profile along the vessel wall. Considerably uniform staining of the cerebral endothelial glycocalyx is observed. The mean intensity value of measurement lines 1 and 2 (left and middle, respectively) has a higher value than the measurement line 3 (right). Red: 70 kDa dextran, Texas Red<sup>®</sup>, Neutral D-1830, Thermo Fisher Scientific, Waltham, MA, USA. Green: FITC-WGA lectin. Scale bar: 50  $\mu$ m.