

Supplementary 1

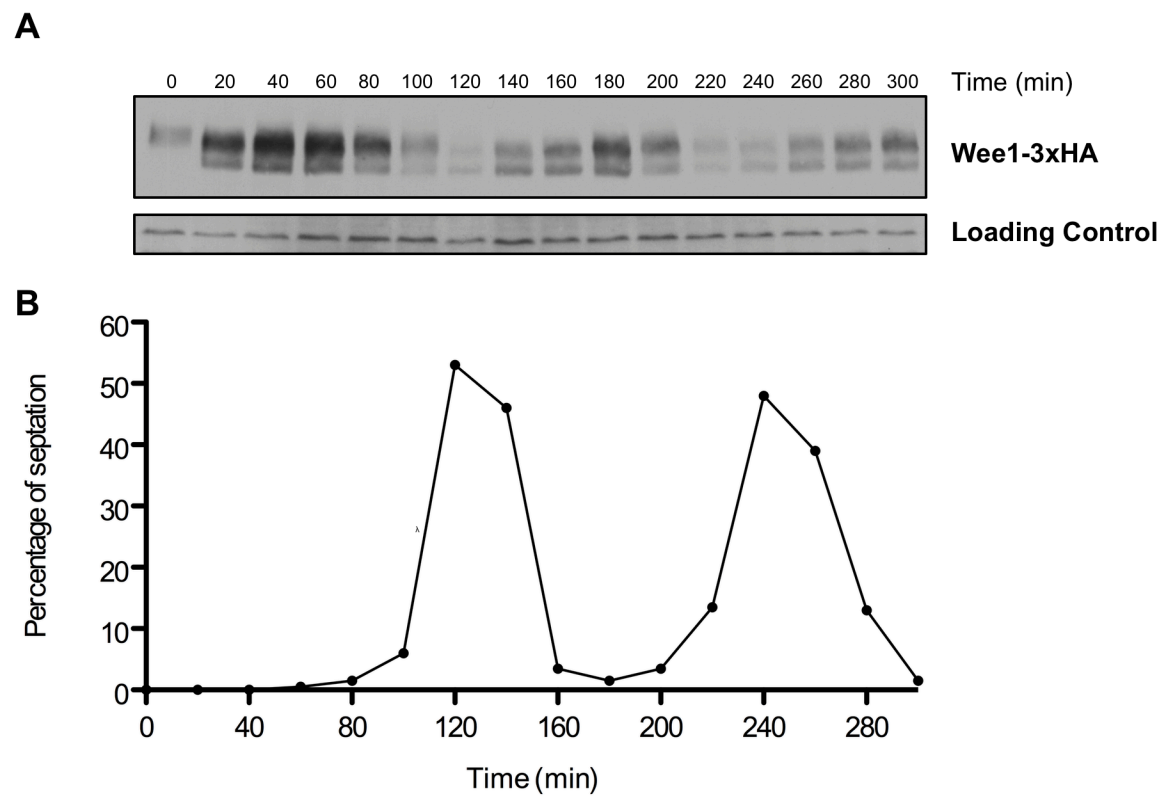


Figure S1: Wee1 shows reduced phosphorylation when is tagged with 3xHA.
(a) Wee1-3xHA was analyzed by western blot during the cell cycle in cells synchronized by centrifugal elutriation. A background band was used as a loading control. (b) Septation index was determined using Calcofluor staining.

Supplementary 2

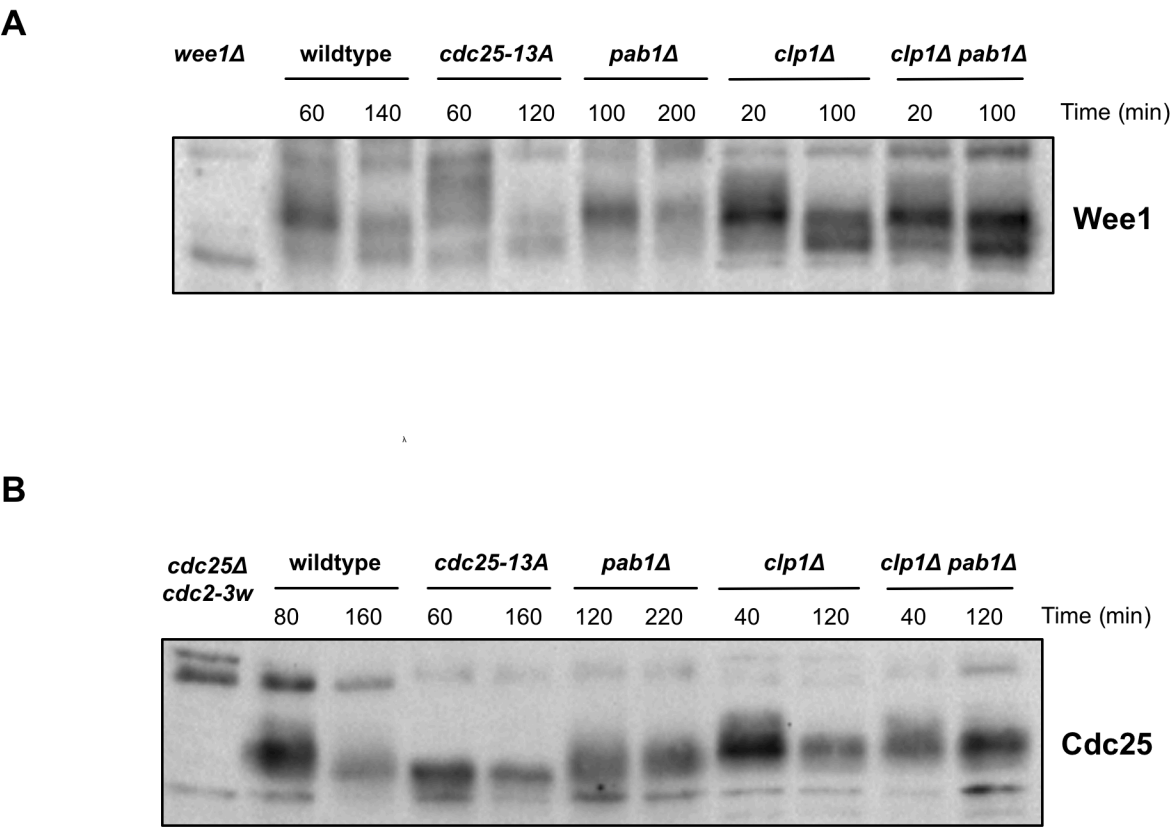


Figure S2: Western blot showing the most and the least phosphorylated forms of Wee1 (A) and Cdc25 (B) during the cell cycle in various mutants. Samples were obtained from the elutriations shown in Figures 2-4, so the cell cycle times correspond to the times indicated in those figures.