

Chemical Characterization of Lipophilic Constituents in the Skin of Migratory Adult Sea Lamprey from the Great Lakes Region

Amila A. Dissanayake,¹ Muraleedharan G. Nair,^{1,3*}

Bioactive Natural Products and Phytoceuticals Laboratory, Department of Horticulture,
Michigan State University, East Lansing, Michigan 48824, USA

Supplemental data

For compound **5**

Figure A. ¹H NMR spectrum **5** in CDCl₃

Figure B. ¹³C NMR spectrum of **5** in CDCl₃

Figure C. HMBC spectrum **5** in CDCl₃

Figure D. GC profile of methyl esters of compound **5**

Figure E. GCMS of the hexadecanoic acid, methyl ester

For triglyceride mixture **F**

Figure F. GCMS of the 9-hexadecenoic acid, methyl ester (Z)

Figure G. ¹H NMR spectrum of triglyceride mixture **F** in CDCl₃

Figure H. GC profile of methyl esters of triglyceride mixture

For compound **6**

Figure I. ¹H NMR spectrum **6** in CDCl₃

Figure J. ¹³C NMR spectrum **6** in CDCl₃

Figure K. HSQC spectrum **6** in CDCl₃

Figure L. GCMS of compound **6**

For compound **7**

Figure M. ¹H NMR spectrum **7** in CDCl₃

Figure N. ¹³C NMR spectrum **7** in CDCl₃

Figure O. HSQC spectrum **7** in CDCl₃

Figure P. HMBC spectrum **7** in CDCl₃

Figure Q. GCMS of the compound **7**

For compound **8**

Figure R. ¹H NMR spectrum **8** in CDCl₃

Figure S. ¹³C NMR spectrum **8** in CDCl₃

For compound **9**

Figure T. ¹H NMR spectrum **9** in CDCl₃

Figure U. ¹³C NMR spectrum **9** in CDCl₃

For compound **10**

Figure V. ¹H NMR spectrum of **10** in CDCl₃

Figure A

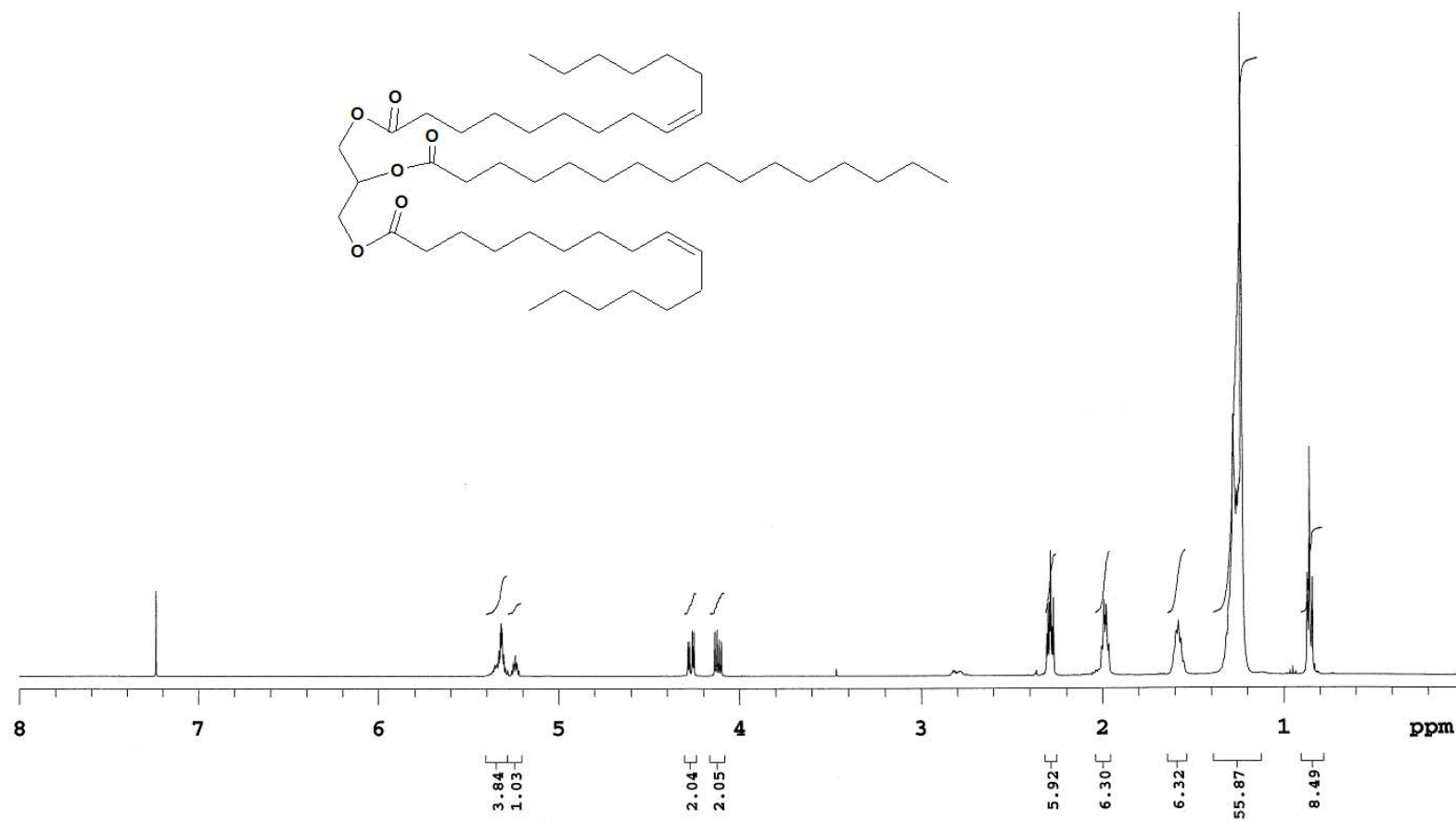


Figure B

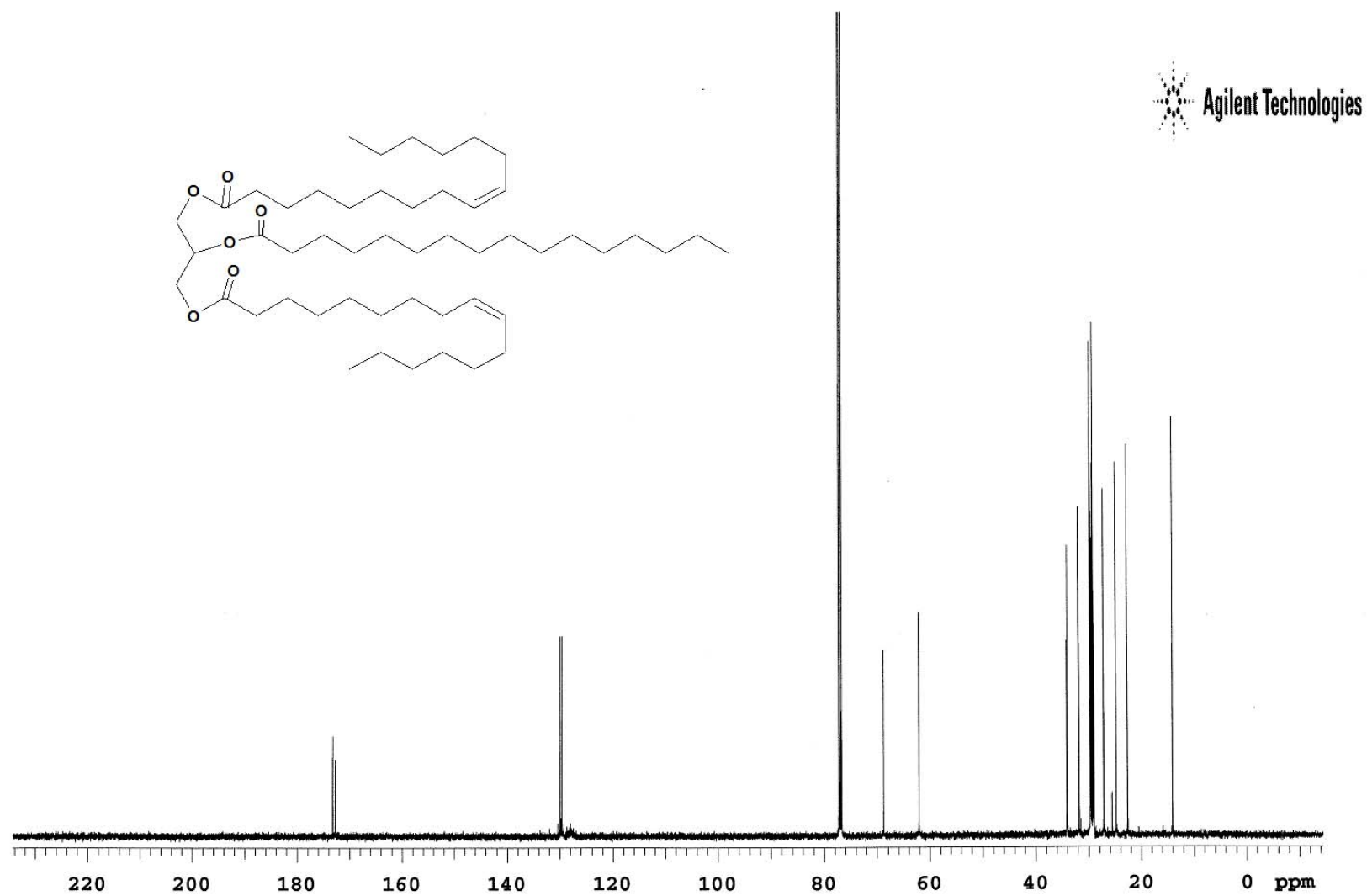


Figure C

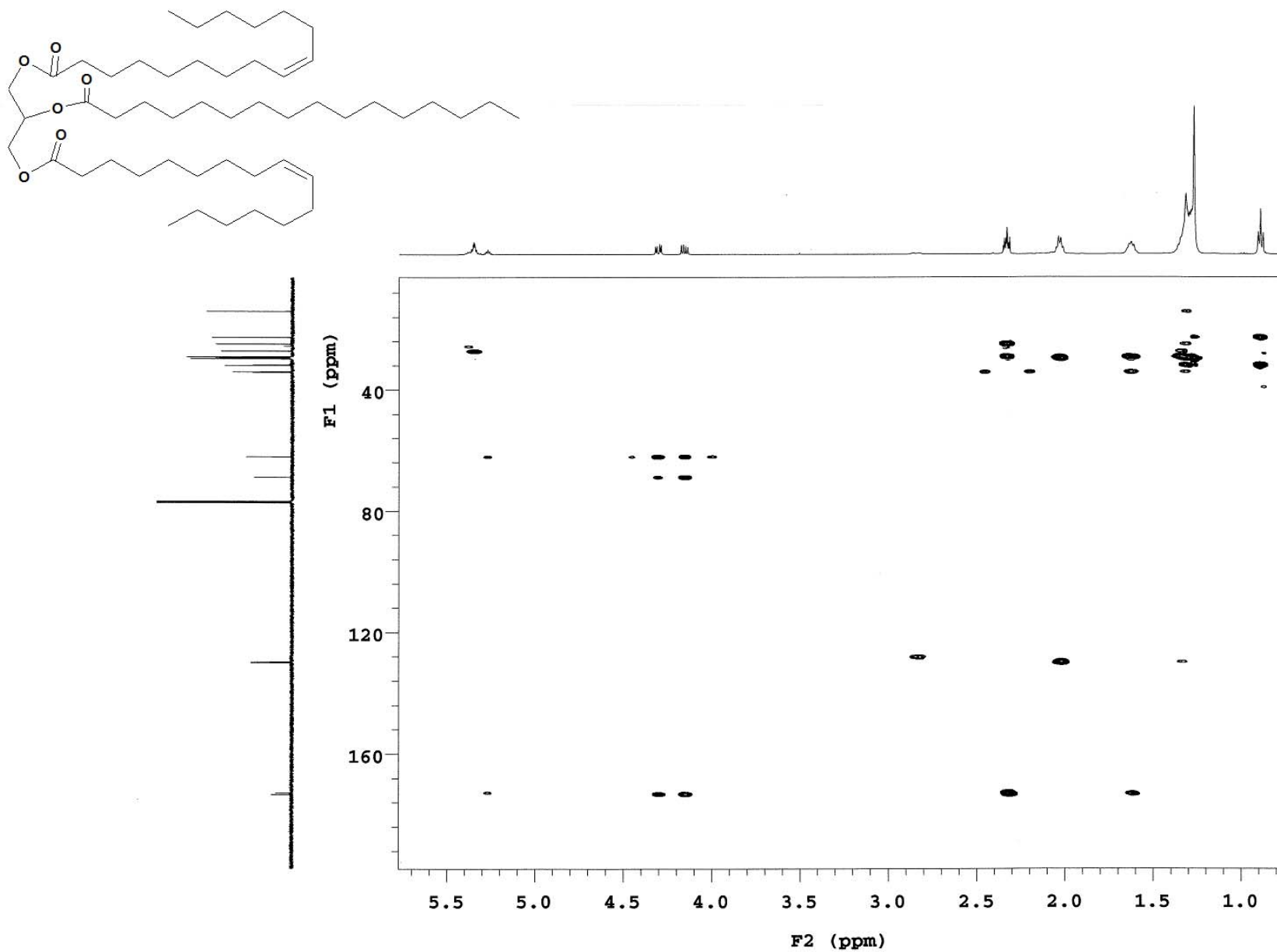


Figure D

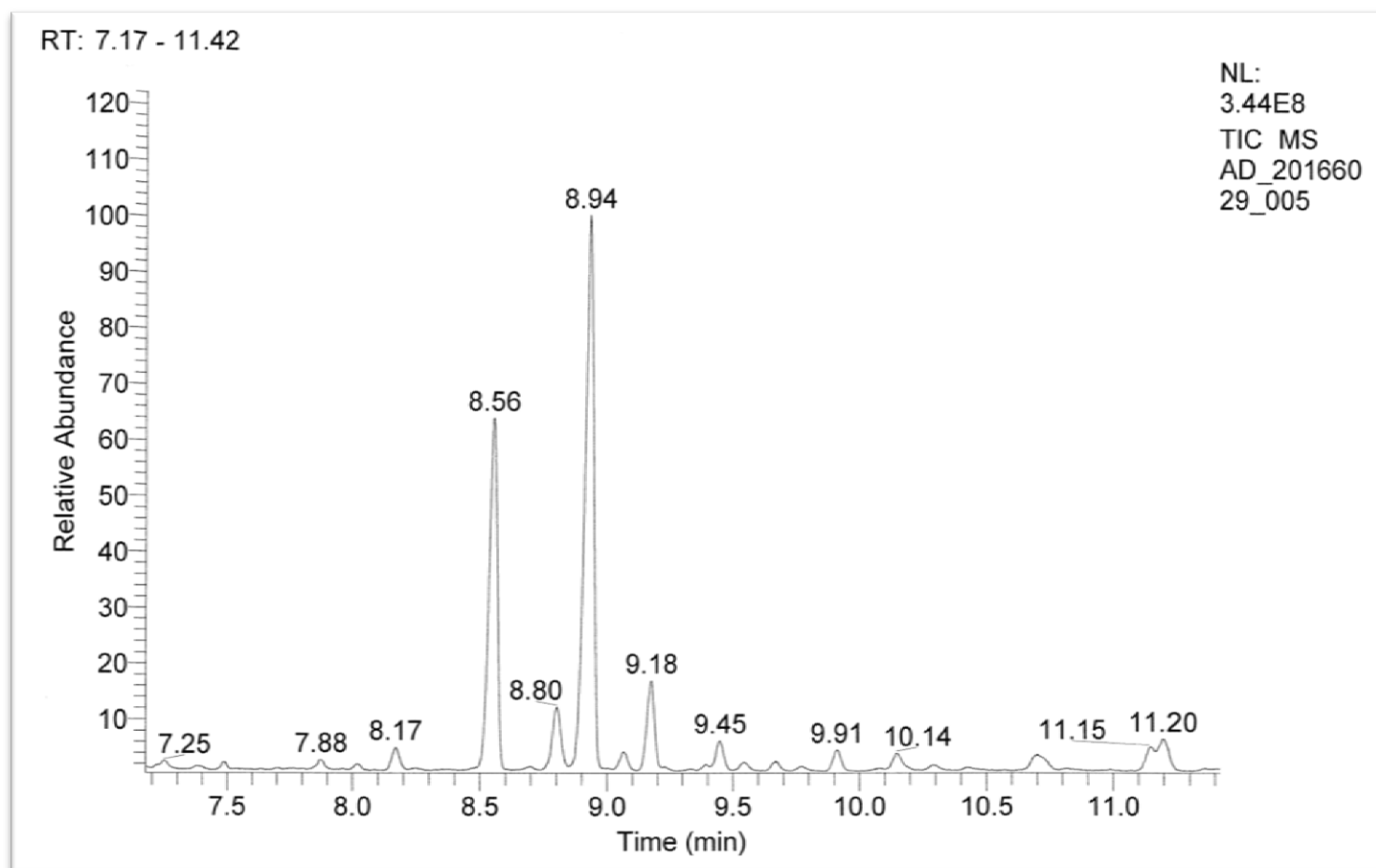


Figure E

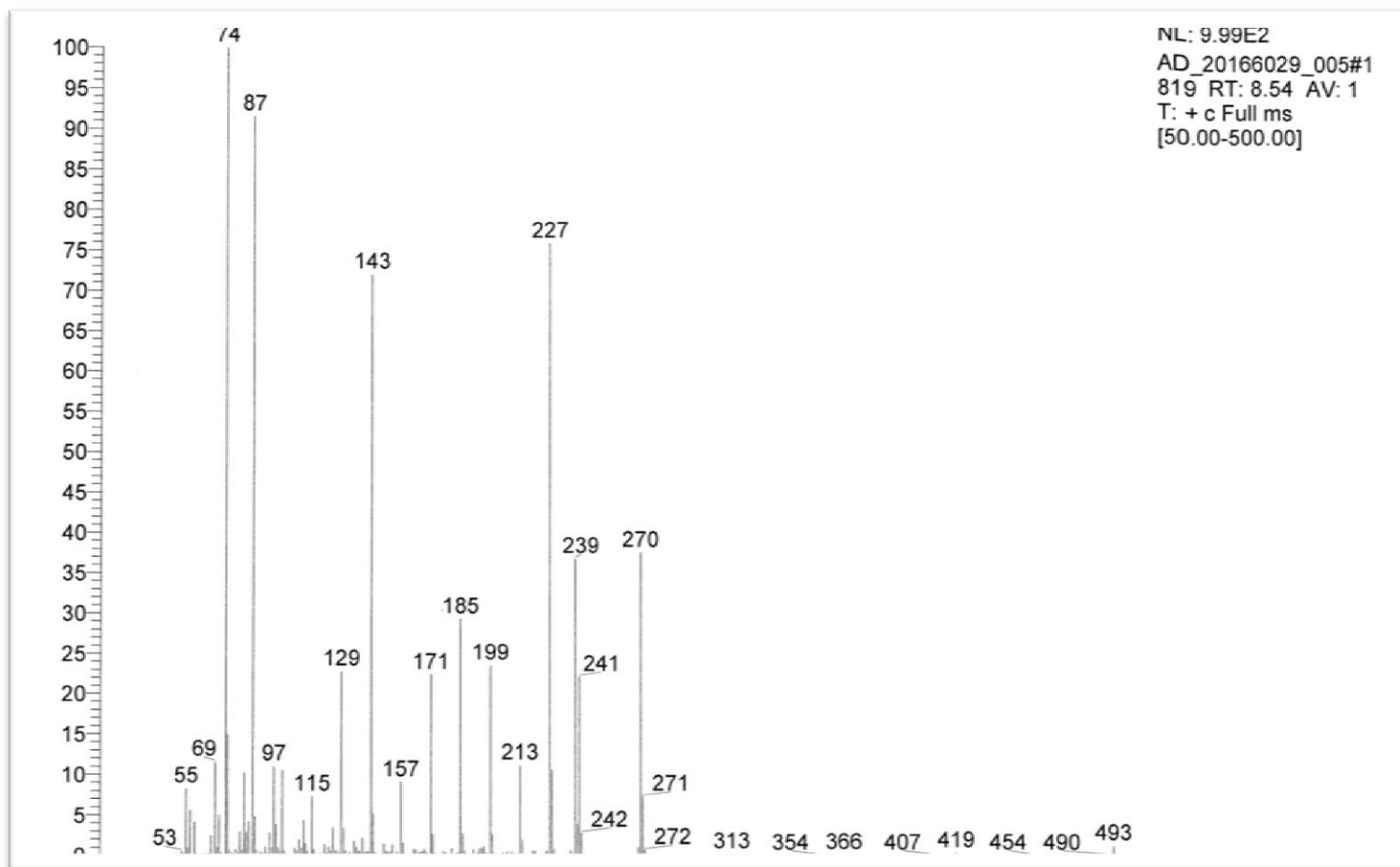


Figure F

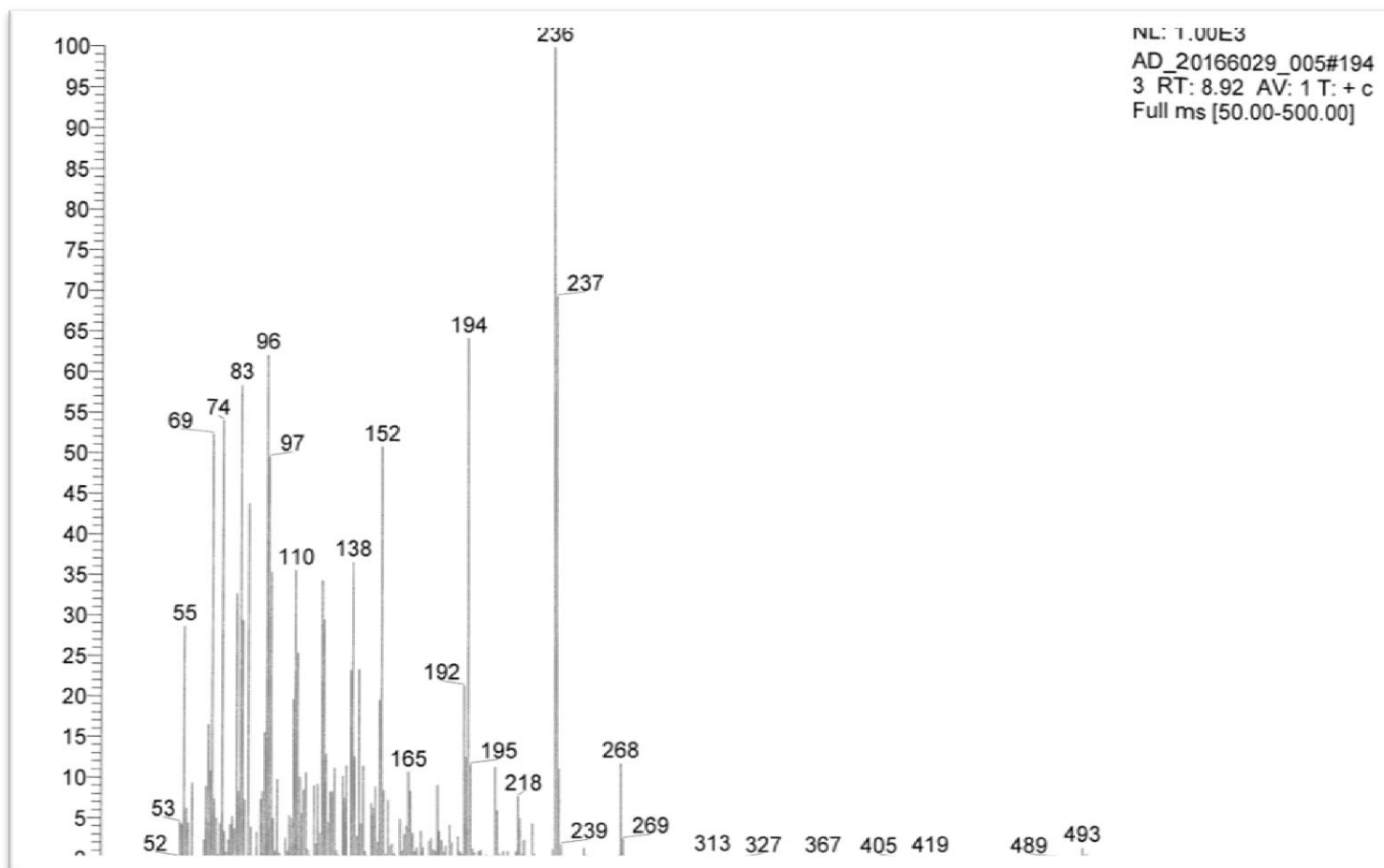


Figure G

Sample Name:
AD_113_140B
Data Collected on:
ormuzd-vnmrs500
Archive directory:
/home/walkup/vnmrsys/data/amilad
Sample directory:
AD_113_140B_20160622_01
FidFile: AD_113_140B_PROTON_01

Pulse Sequence: PROTON (s2pul)
Solvent: cdcl3
Data collected on: Jun 22 2016

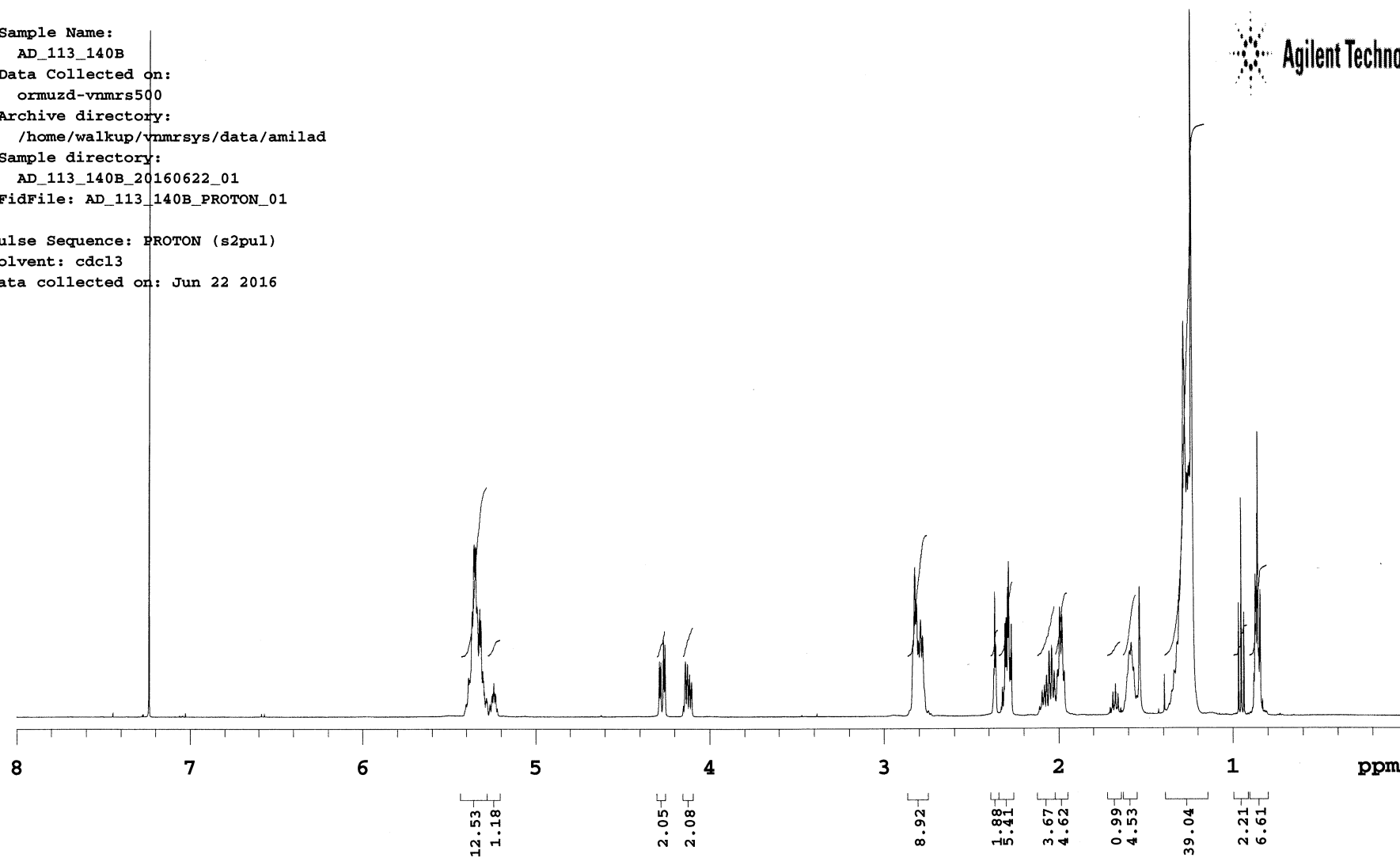


Figure H

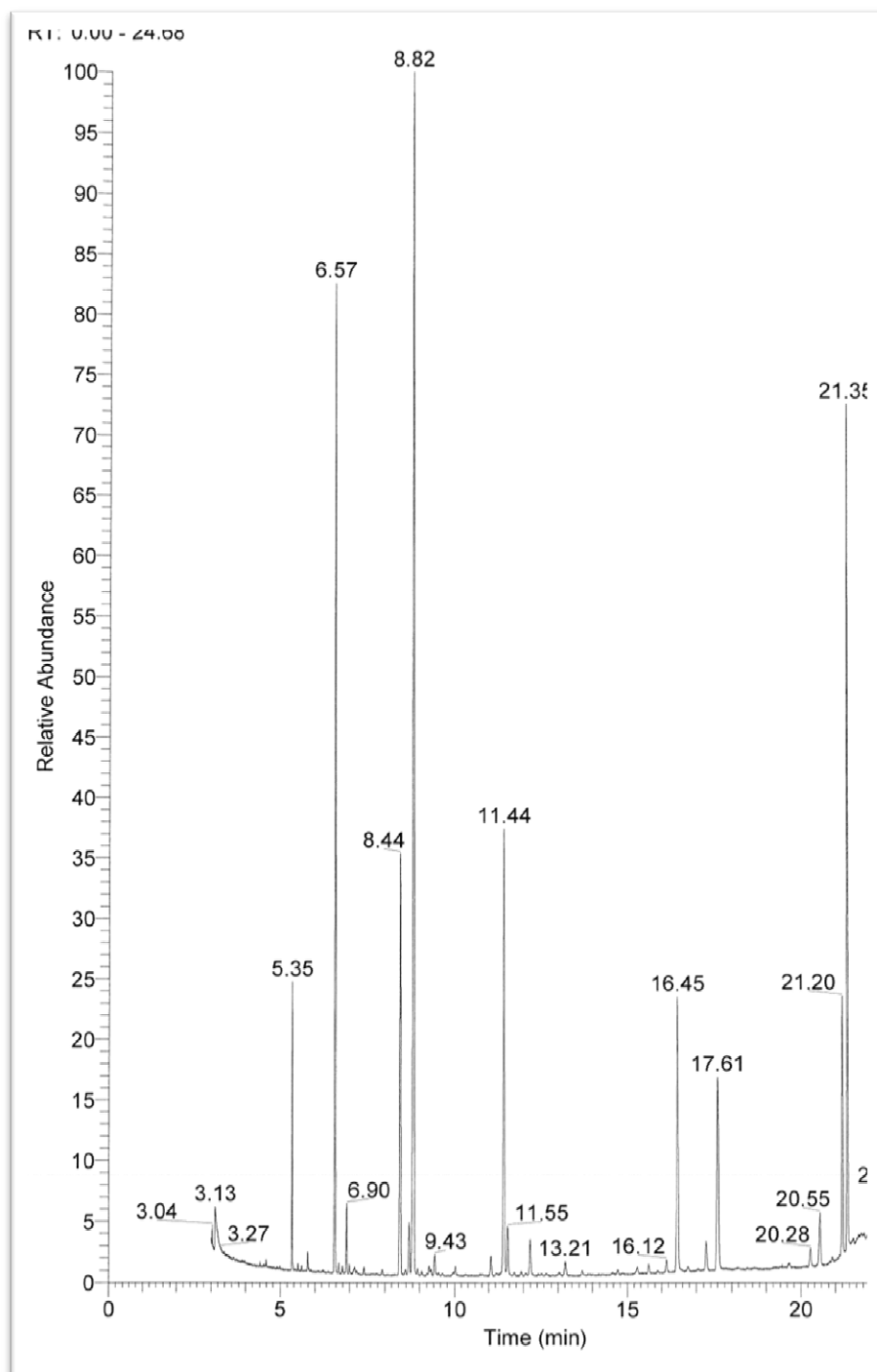


Figure I

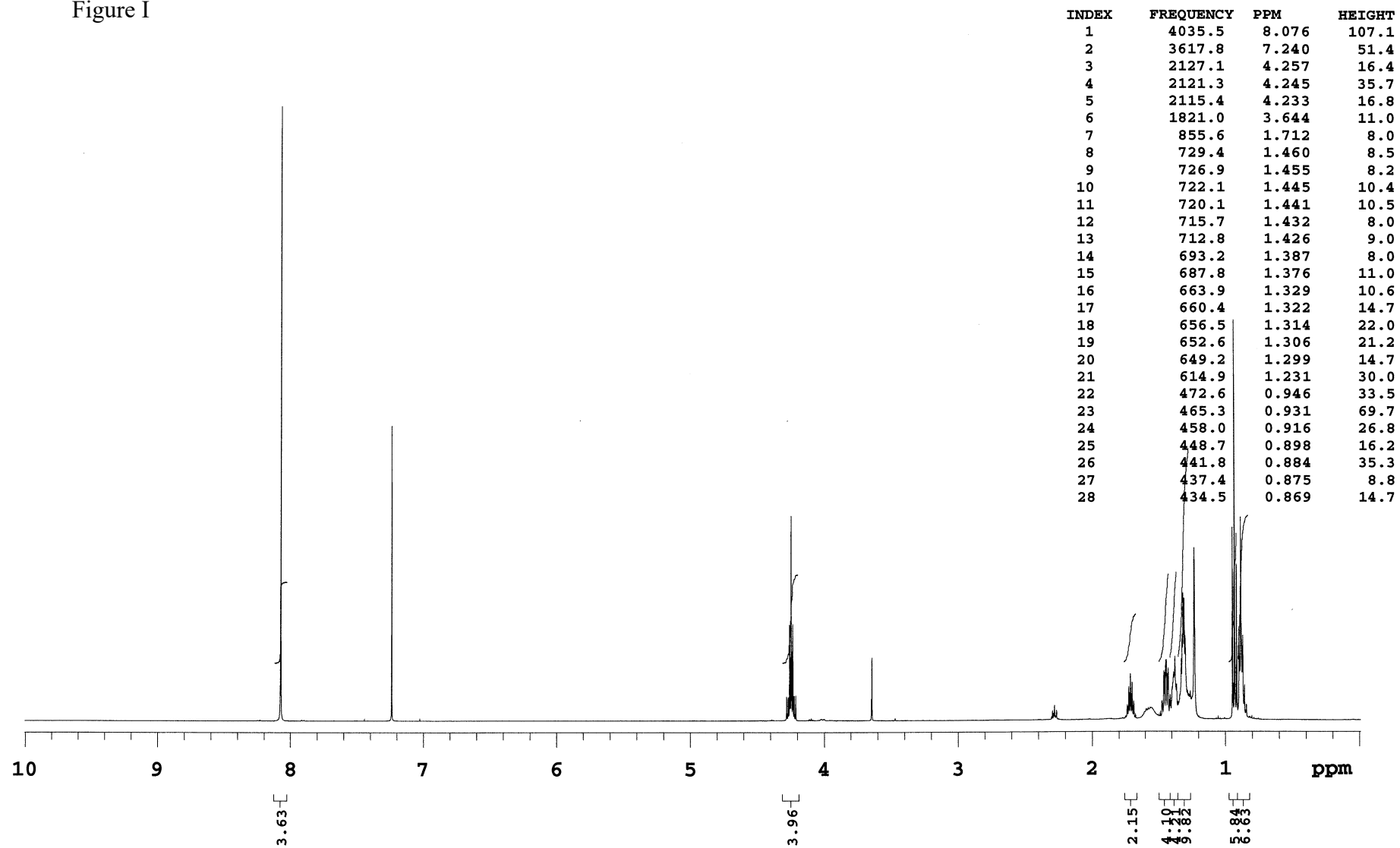


Figure J

Sample Name:
AD_120_4A
Data Collected on:
ormuzd-vnmrs500
Archive directory:
/home/walkup/vnmrsys/data/amilad
Sample directory:
AD_120_4A_20160719_02
FidFile: AD_120_4A_CARBON_01

Pulse Sequence: CARBON (s2pul)
Solvent: cdc13
Data collected on: Jul 19 2016

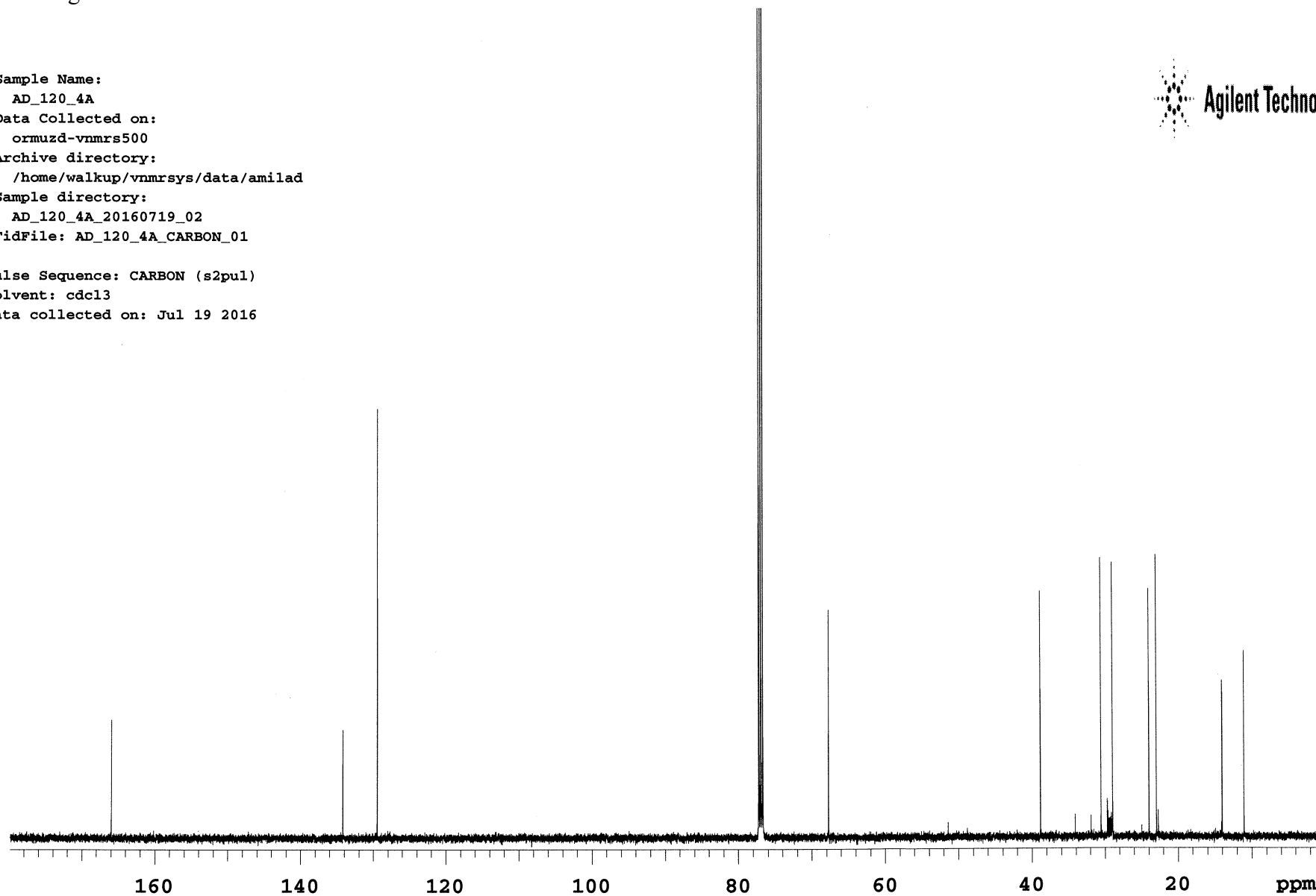


Figure K

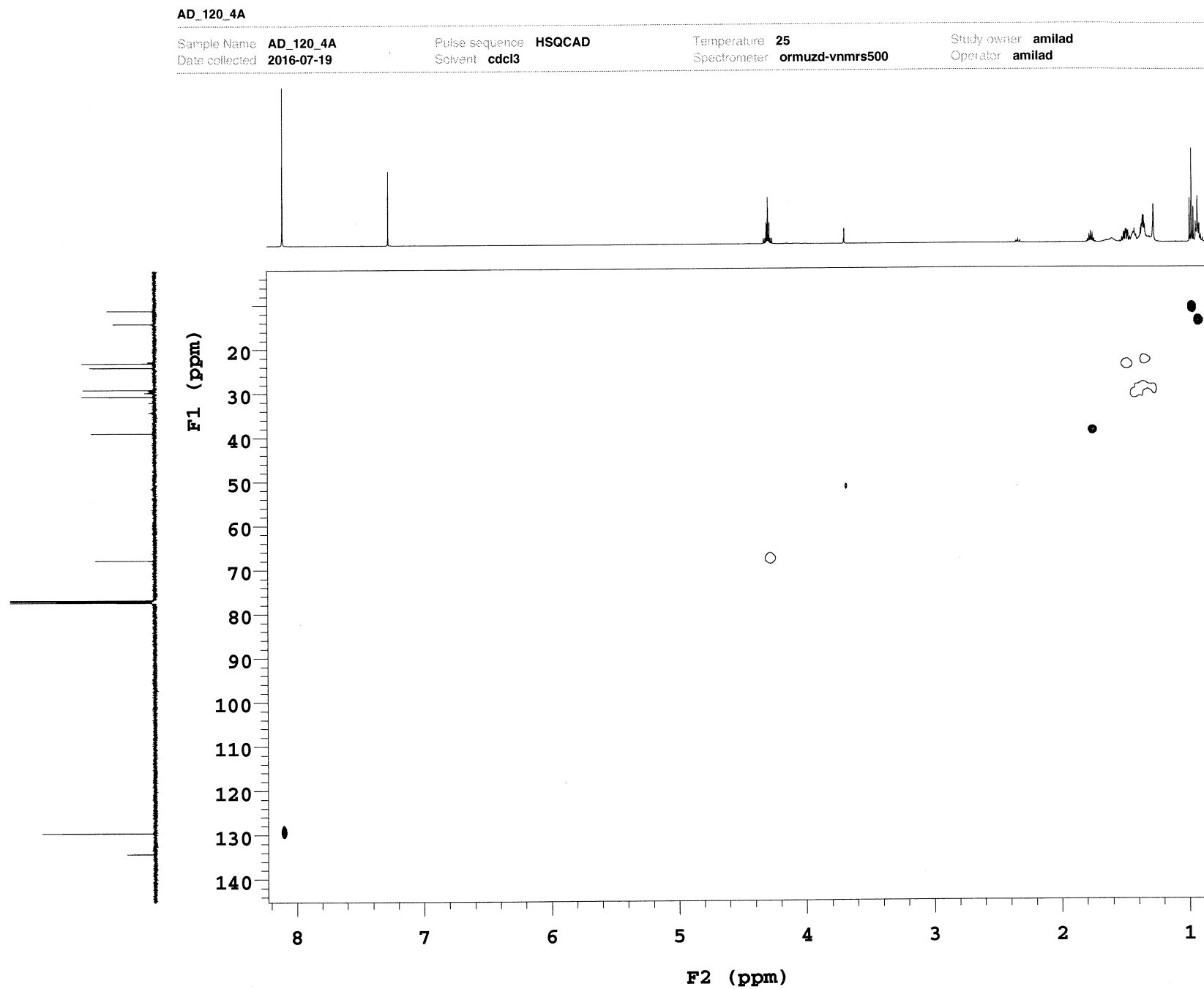


Figure L

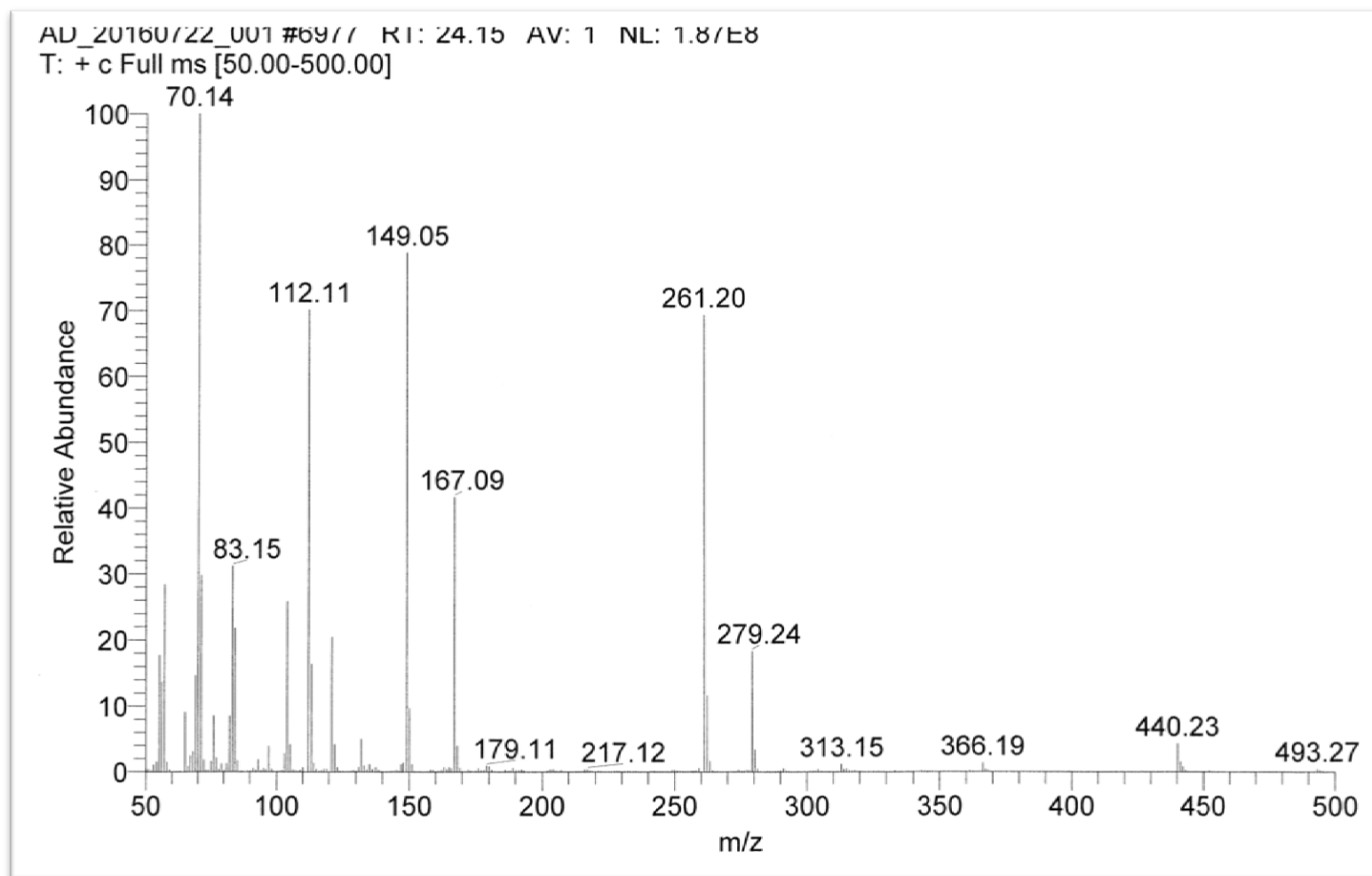


Figure M

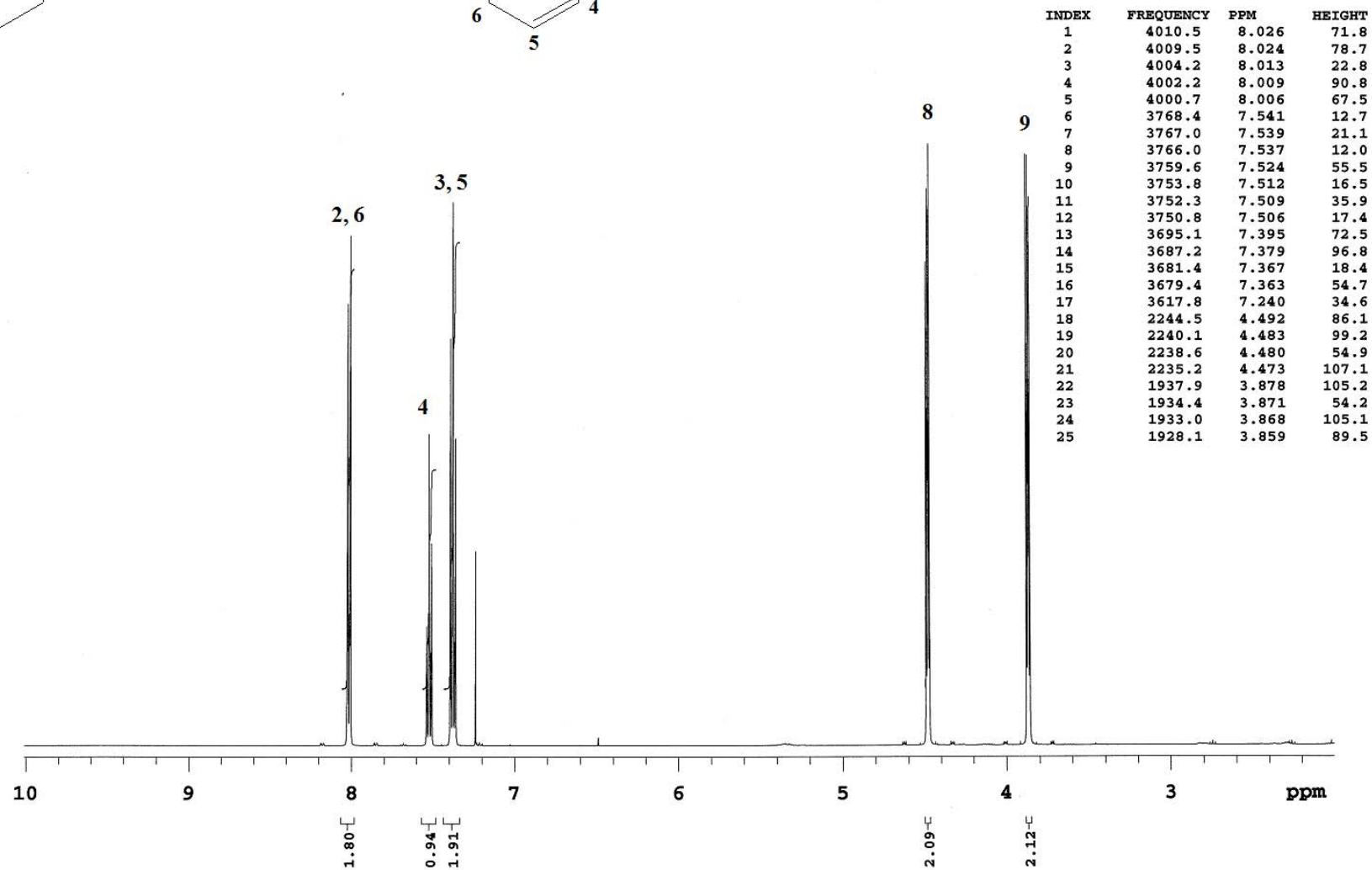
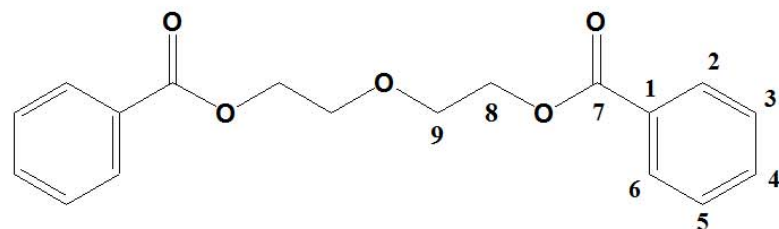
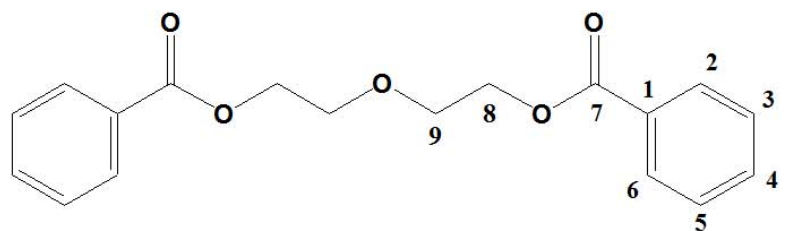


Figure N



INDEX	FREQUENCY	PPM	HEIGHT
1	20921.6	166.509	14.5
2	16706.4	132.961	61.3
3	16329.7	129.963	19.0
4	16287.7	129.629	116.3
5	16120.8	128.301	117.9
6	9706.4	77.250	38.5
7	9674.9	77.000	34.4
8	9642.5	76.742	39.1
9	8690.8	69.167	35.7
10	8037.5	63.968	56.3

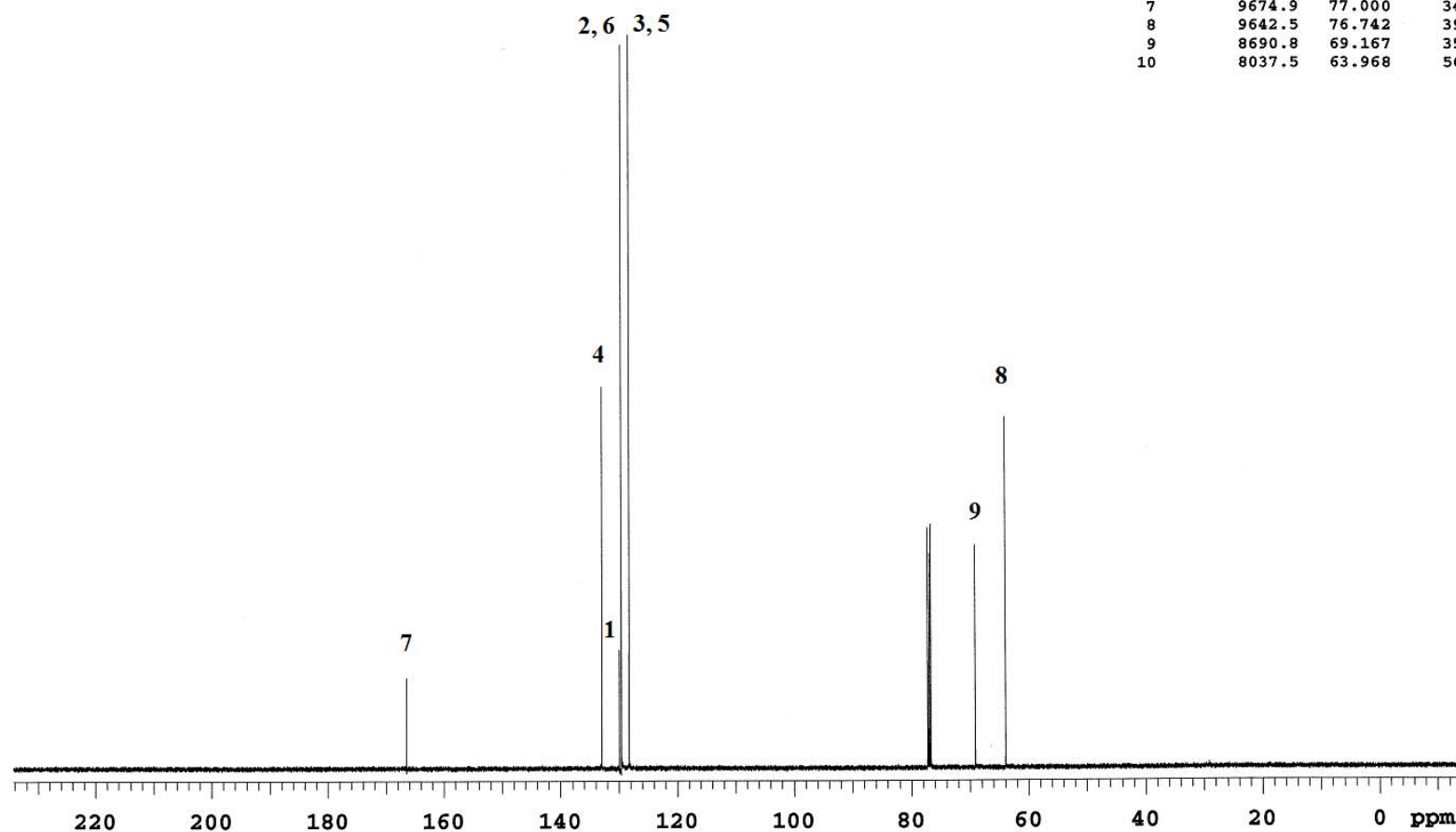


Figure O

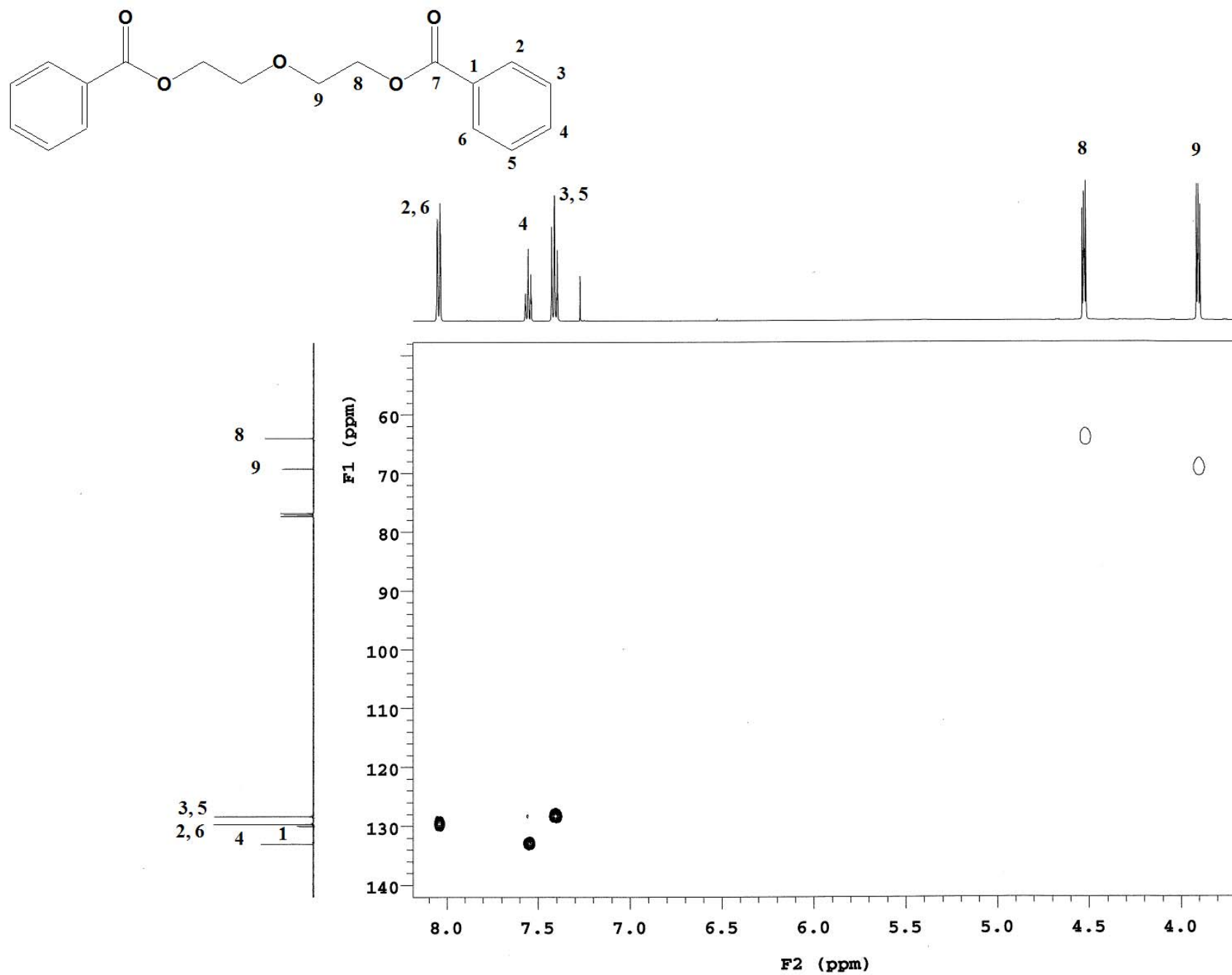


Figure P

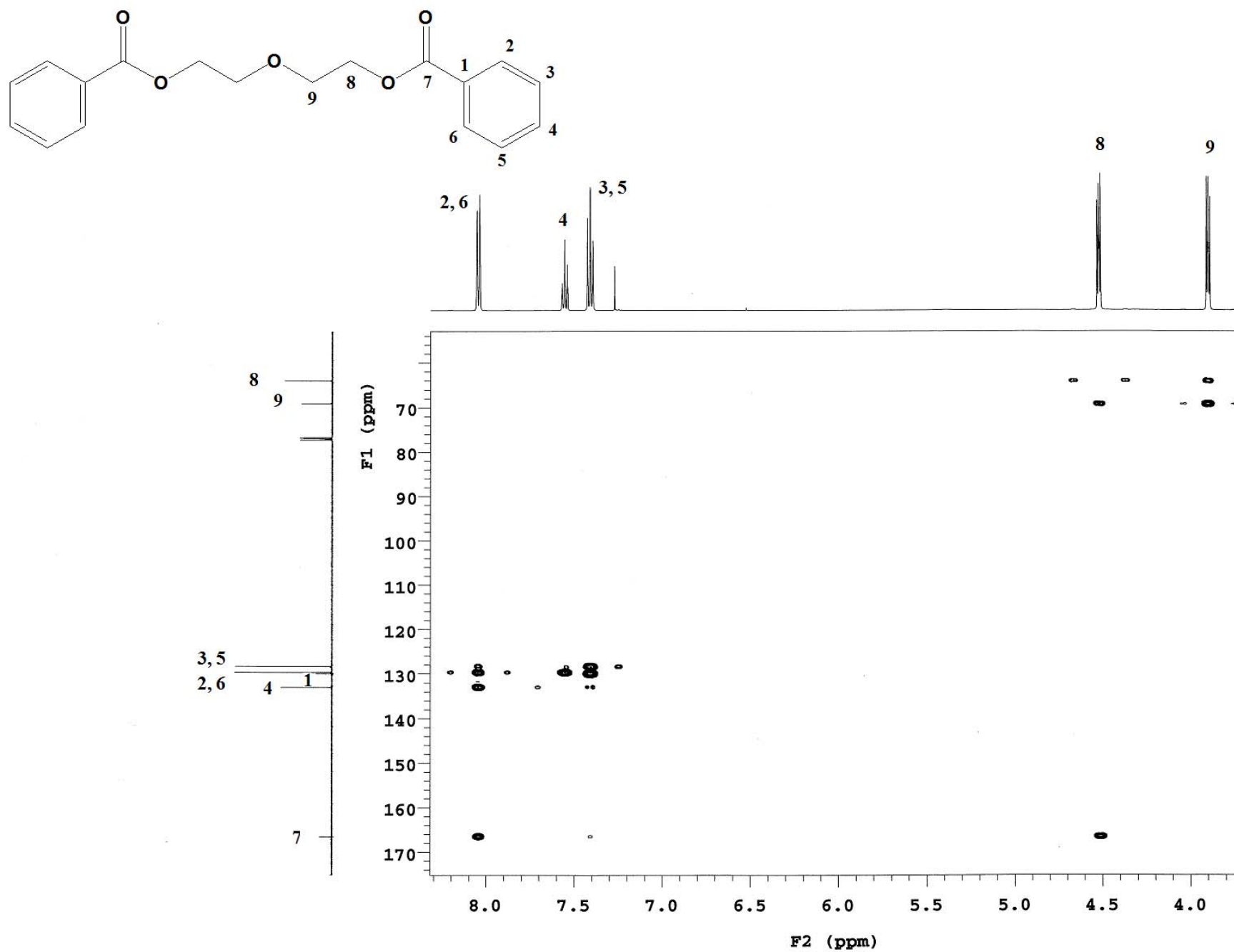


Figure Q

AD/113/143D

AD_20160527_143D_2 768 (8.707)

TOF MS EI+
4.86e5

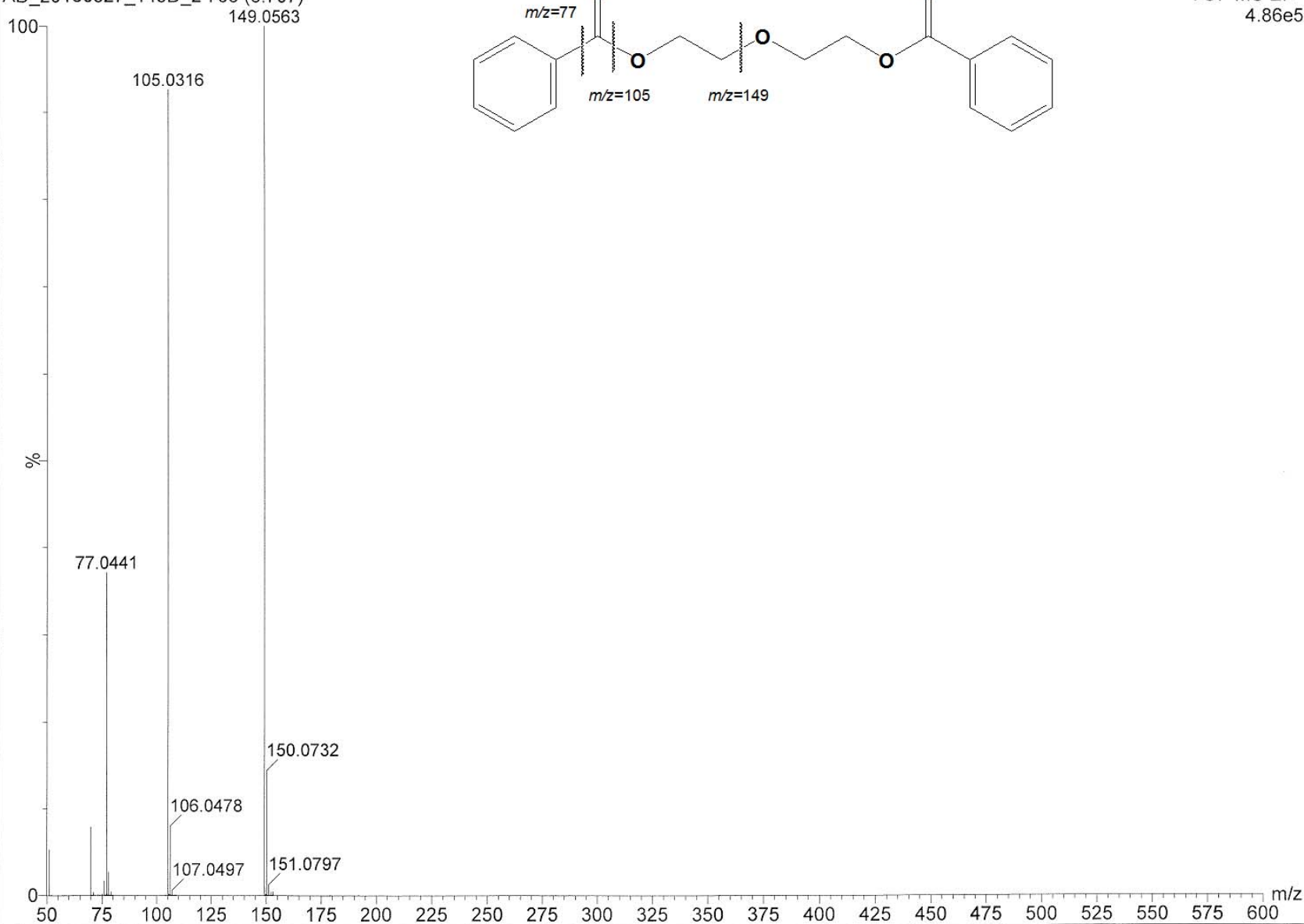


Figure R

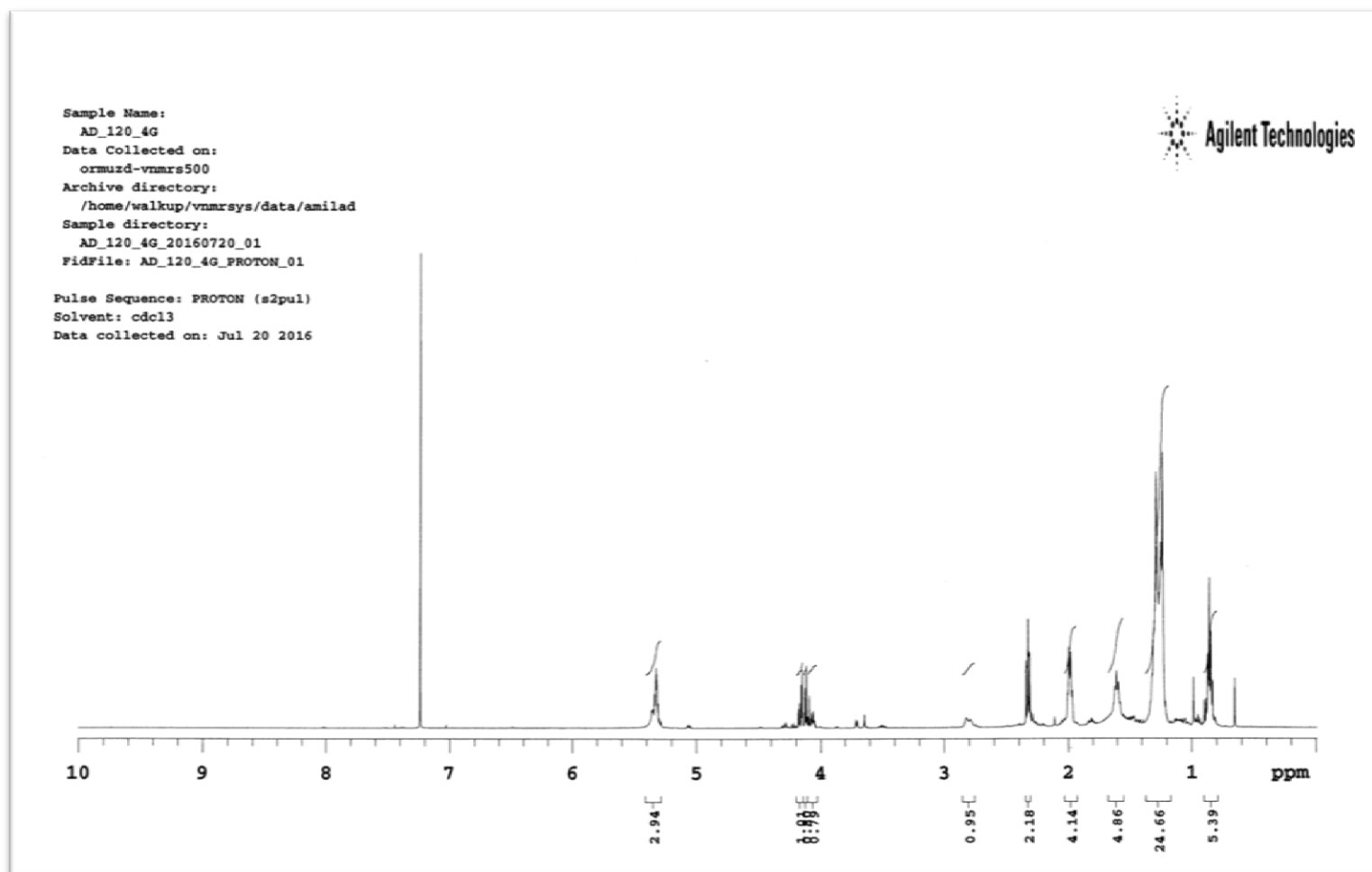


Figure S

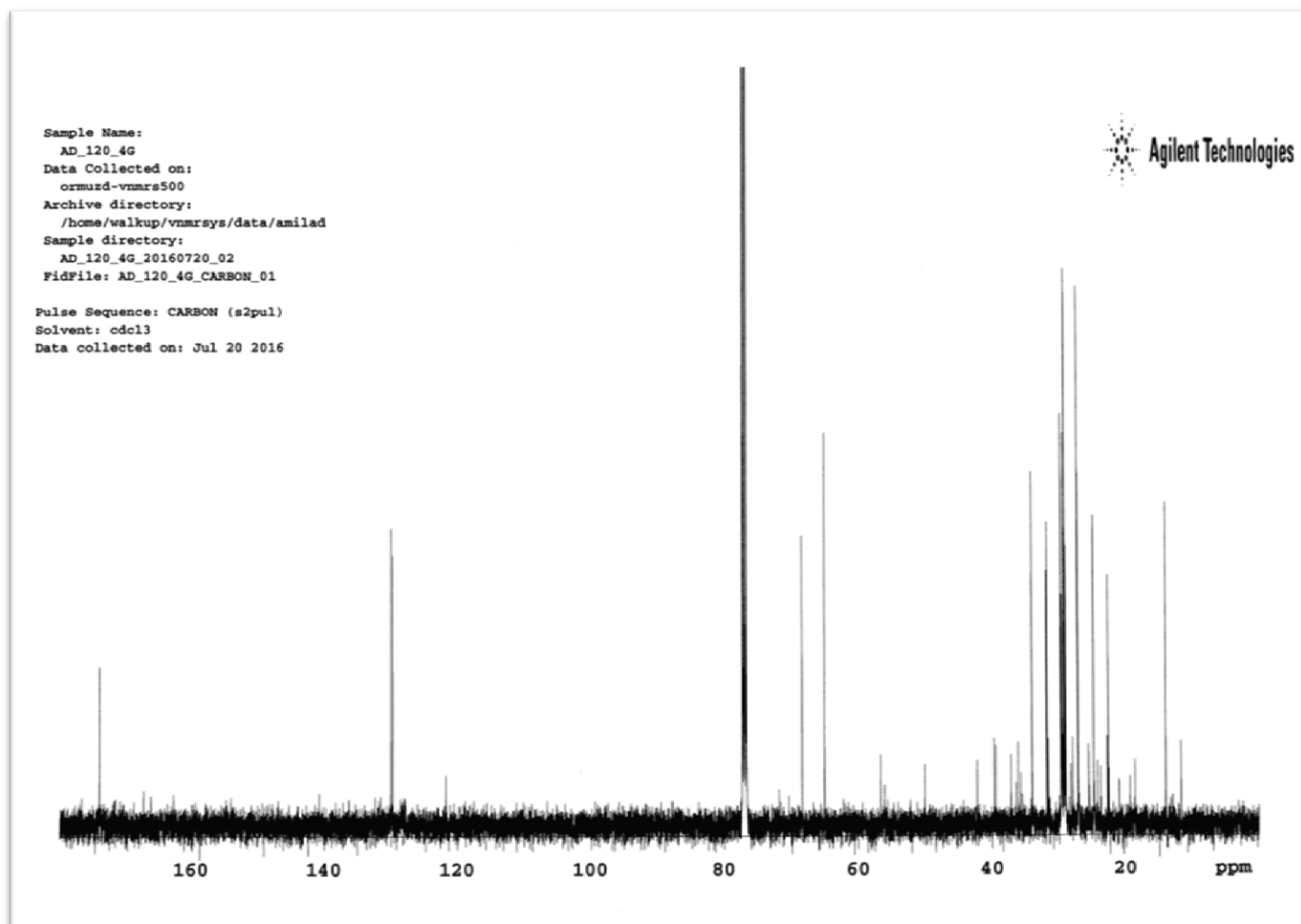


Figure T

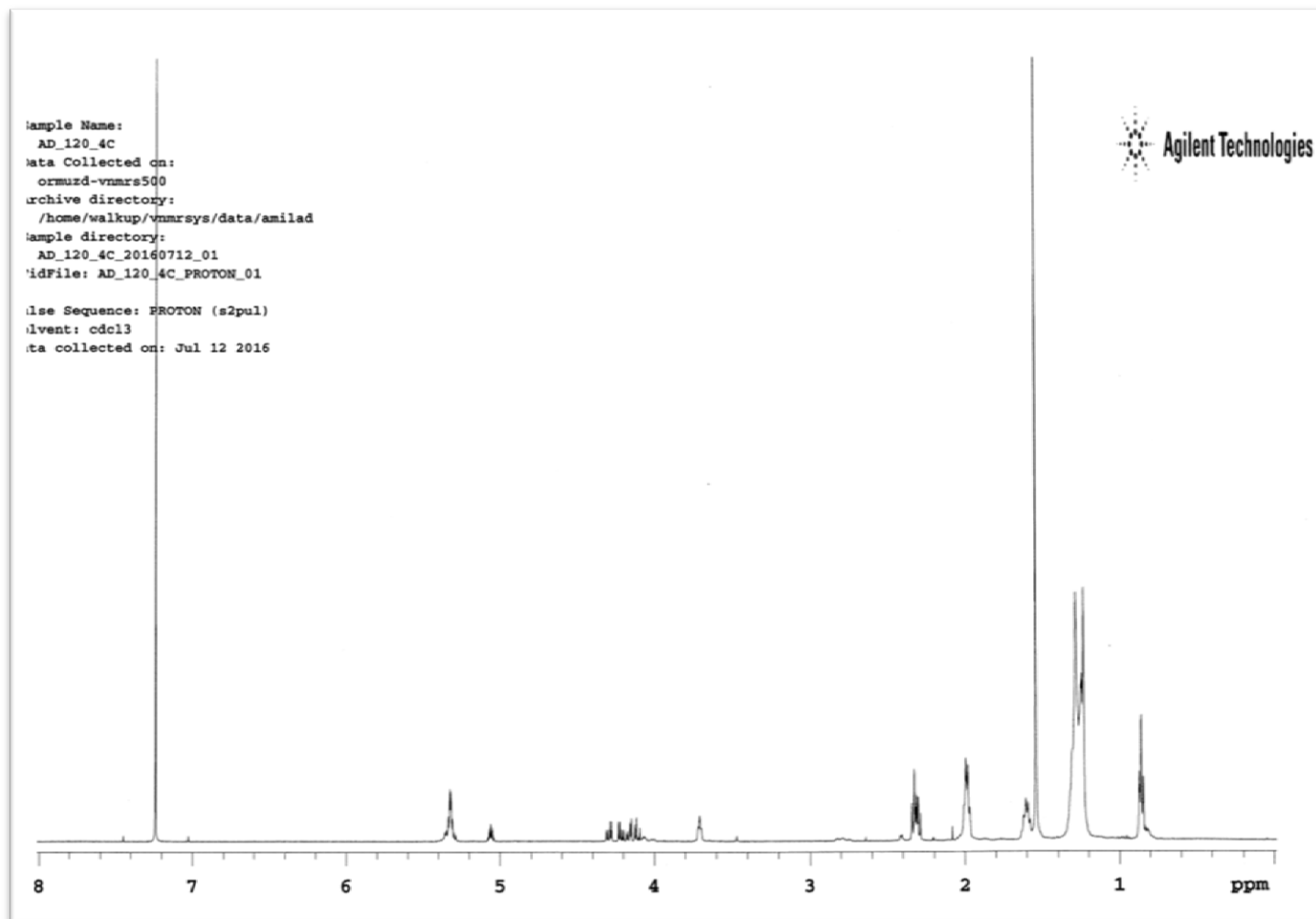


Figure U

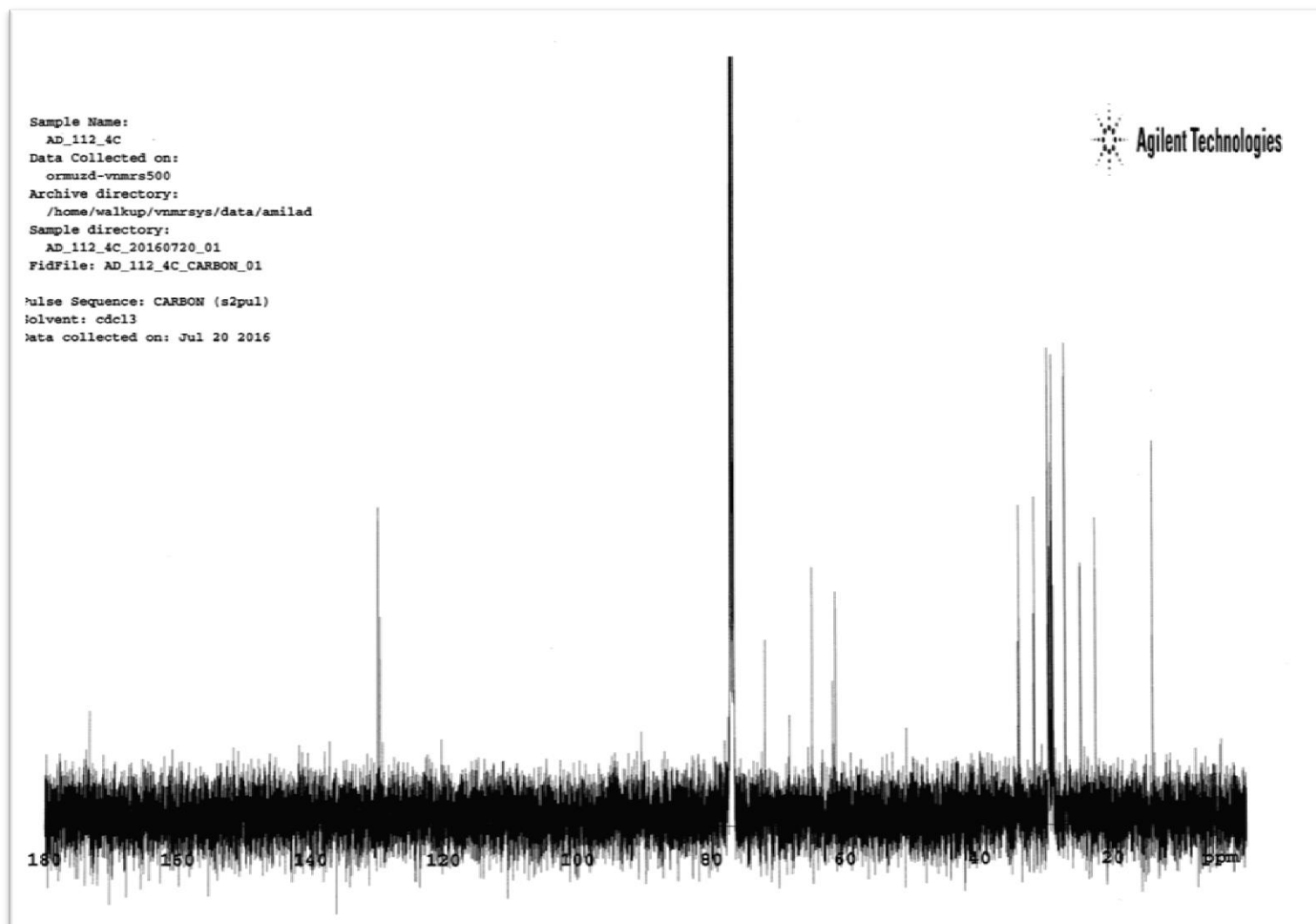


Figure V

