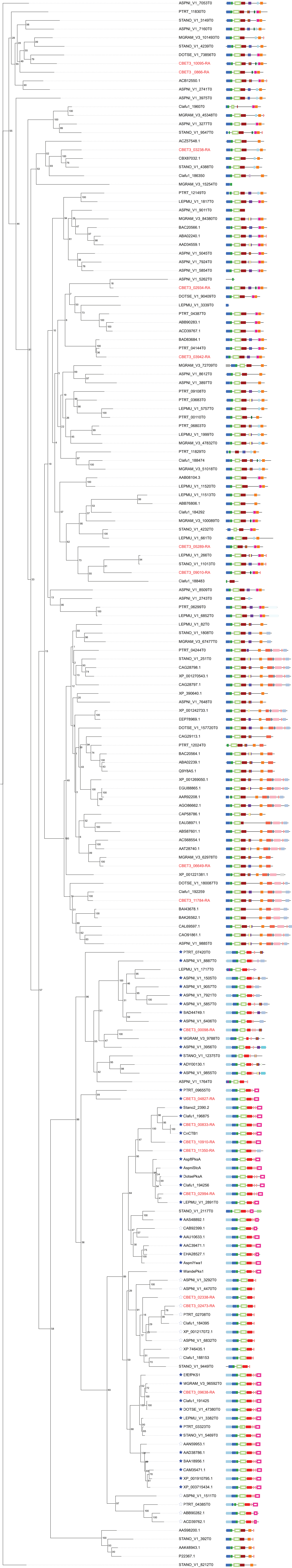


A



- SAT
- KS (N terminus)
- KS (C terminus)
- AT
- PT
- ACP
- TE
- DH
- MT
- ADH
- ADH\_zinc (N terminus)
- ADH\_zinc (C terminus)
- KR
- Condensation
- HxxPF-repeat
- AMP
- NAD

HR-PKS

PR-PKS

NR-PKS

PR-PKS