

SUJETO	CONDICIÓN	SEXO	SESIÓN	FECHA-HORA	Vmax <i>i</i>	Tmax <i>i</i>
AVT	(Dp)	H	Sesión-modifCONS-2b.sas	05/05/2009-17:30	114.400	65.600
AGNG	(Ct)	H	Sesión-modifCONS-2b.sas	05/05/2009-19:02	249.000	58.333
APV	(Ct)	H	Sesión-modifCONS-2b.sas	06/05/2009-16:33	352.000	63.000
JSM	(Dp)	M	Sesión-modifCONS-2b.sas	06/05/2009-17:34	208.000	69.000
PMA	(Ct)	H	Sesión-modifCONS-2b.sas	06/05/2009-18:41	139.667	83.333
JRM	(Dp)	H	Sesión-modifCONS-2b.sas	06/05/2009-20:09	113.200	62.200
ECD	(Dp)	H	Sesión-modifCONS-2b.sas	07/05/2009-16:31	196.400	56.000
LGT	(Dp)	M	Sesión-modifCONS-2b.sas	07/05/2009-17:34	261.400	59.800
OIRP	(Ct)	H	Sesión-modifCONS-2b.sas	07/05/2009-18:56	119.000	76.800
AJMO	(Dp)	H	Sesión-modifCONS-2b.sas	07/05/2009-19:59	58.600	58.800
VSV	(Ct)	M	Sesión-modifCONS-2b.sas	07/05/2009-20:34	623.750	71.750
LPS	(Ct)	M	Sesión-modifCONS-2b.sas	08/05/2009-16:40	250.000	67.800
MHA	(Ct)	M	Sesión-modifCONS-2b.sas	08/05/2009-17:05	89.000	48.750
JMDA	(Ct)	H	Sesión-modifCONS-2b.sas	08/05/2009-18:14	219.800	63.600
CVV	(Ct)	H	Sesión-modifCONS-2b.sas	08/05/2009-19:00	153.200	66.000
JSV	(Ct)	H	Sesión-modifCONS-2b.sas	08/05/2009-20:08	163.750	57.250
CGR	(Dp)	H	Sesión-modifCONS-2b.sas	30/04/2009-16:31	46.600	56.600
EGL	(Dp)	H	Sesión-modifCONS-2b.sas	30/04/2009-17:33	68.333	53.333
RGD	(Dp)	H	Sesión-modifCONS-2b.sas	30/04/2009-19:16	100.600	61.600
FJSH	(Dp)	H	Sesión-modifCONS-2b.sas	30/04/2009-20:16	177.800	56.400
AMM	(Dp)	H	Sesión-modifCONS-2b.sas	11/05/2009-17:39	108.400	63.200
DTA	(Dp)	H	Sesión-modifCONS-2b.sas	11/05/2009-19:54	281.200	49.600
AMG	(Ct)	H	Sesión-modifCONS-2b.sas	12/05/2009-16:39	298.000	61.250
GPG	(Dp)	M	Sesión-modifCONS-2b.sas	13/05/2009-16:29	168.000	63.000
EOM	(Dp)	M	Sesión-modifCONS-2b.sas	13/05/2009-17:30	76.200	57.600
MRP	(Ct)	M	Sesión-modifCONS-2b.sas	11/05/2009-18:24	72.400	62.000
EVC	(Dp)	M	Sesión-modifCONS-2b.sas	20/05/2009-13:58	73.000	60.000
MOG	(Ct)	M	Sesión-modifCONS-2b.sas	20/05/2009-14:52	265.800	60.400
DII	(Ct)	M	Sesión-modifCONS-2b.sas	18/05/2009-16:31	192.400	70.600

Vmax m	Tmax m	Vmax pre30	Tmax pre30	Vmax pre60	Tmax pre60	Vmax pre120	Tmax pre120
75.667	62.833	43.833	24.167				
229.571	59.571	158.000	40.083	133.800	52.800	164.091	54.000
62.000	119.333	83.556	54.889	66.200	55.200	103.750	61.000
161.667	66.000	42.500	45.200	29.778	165.889	38.091	50.545
32.333	65.667	24.333	71.500	22.000	154.000	24.500	34.000
127.000	52.000	54.667	37.444	24.000	42.000	23.400	50.400
203.330	62.000	163.570	47.570	104.000	54.780	97.500	90.640
131.167	65.500	133.570	48.280	123.860	53.860	179.640	57.700
52.670	60.500	28.000	61.070	20.280	78.000	20.710	55.780
26.750	103.000	26.930	93.000	25.430	148.780	26.500	89.300
630.000	67.167	359.380	47.846	305.820	54.100	376.000	53.840
297.000	66.667	129.920	72.380	92.070	129.857	166.230	62.770
79.667	79.333	89.286	39.071	58.231	42.769	76.667	76.583
180.800	68.400	176.857	57.857	135.714	48.071	162.857	55.500
118.000	61.400	69.625	56.375	109.400	83.000	126.857	46.571
95.600	68.600	78.786	42.571	55.600	47.500	34.143	81.571
42.000	59.200	26.400	99.400	25.286	55.286	18.500	57.250
59.750	52.500	23.250	43.750	13.750	49.000	15.000	493.000
78.167	67.833	28.692	39.000	28.000	115.556	24.182	47.818
210.000	62.833	103.357	47.214	32.800	53.600	71.692	46.769
76.200	59.800	77.692	44.154	64.556	57.778	71.000	56.615
236.167	64.000	133.286	54.143	103.750	63.000	149.167	61.167
188.833	62.500	112.929	41.429				
183.000	64.667	173.643	51.429	87.273	54.818	146.429	55.429
62.000	57.833	32.300	37.700	19.667	57.333	18.429	50.143
57.000	70.330	44.850	164.310	47.000	185.430	44.430	128.000
54.500	59.333	28.000	64.143	24.333	168.333	20.750	98.250
186.333	64.333	141.571	34.500	99.333	37.167	44.000	54.000
82.167	65.667	56.250	43.250				

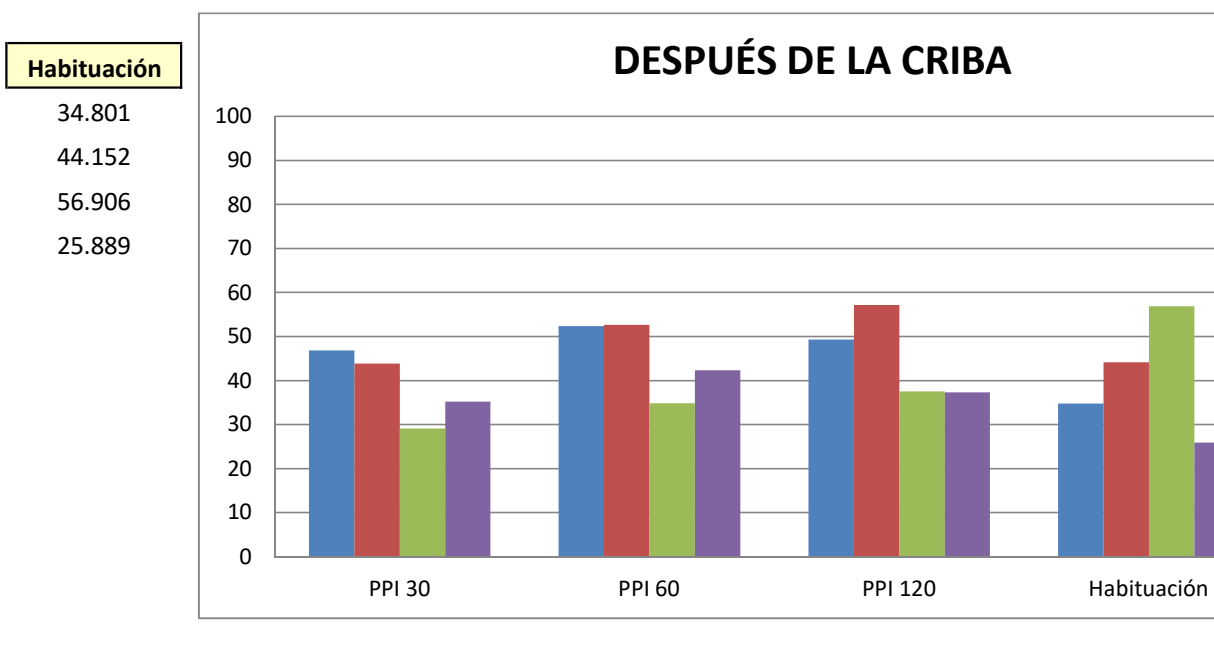
PPI 30	PPI 60	PPI 120	Vmax <i>f</i>	Tmax <i>f</i>	Habitación
42.070			64.400	61.600	43.706
31.176	41.717	28.523	258.500	59.250	-3.815
-34.767	-6.774	-67.339	96.500	61.000	72.585
73.711	81.581	76.439	85.200	62.000	59.038
24.742	31.959	24.227	35.667	128.333	74.463
56.955	81.102	81.575	80.500	62.500	28.887
19.554	48.852	52.048	140.600	62.400	28.411
-1.832	5.571	-36.955	57.400	50.800	78.041
46.839	61.496	60.680	27.400	41.200	76.975
-0.673	4.935	0.935	21.800	44.800	62.799
42.956	51.457	40.317	538.200	94.600	13.715
56.256	69.000	44.030	245.000	61.400	2.000
-12.074	26.907	3.766	101.250	64.500	-13.764
2.181	24.937	9.924	160.000	61.200	27.207
40.996	7.288	-7.506	85.000	60.800	44.517
17.588	41.841	64.286	59.600	57.800	63.603
37.143	39.796	55.952	35.667	56.667	23.462
61.088	76.987	74.895	45.667	58.333	33.171
63.293	64.179	69.064	35.200	55.400	65.010
50.782	84.381	65.861	127.800	60.000	28.121
-1.958	15.281	6.824	95.500	66.500	11.900
43.563	56.069	36.838	217.800	57.800	22.546
40.197			181.800	67.200	38.993
5.113	52.310	19.984	174.800	61.400	-4.048
47.903	68.280	70.276	68.000	56.500	10.761
21.316	17.544	22.053	57.800	114.400	20.166
48.624	55.352	61.927	52.000	59.600	28.767
24.022	46.691	76.386	163.000	59.600	38.676
31.542			86.800	72.800	54.886

SUJETO	CONDICIÓN	SEXO	SESIÓN	FECHA-HORA	Vmax i
AVT	(Dp)	H	Sesión-modifCONS-2b.sas	05/05/2009-17:30	114.400
AGNG	(Ct)	H	Sesión-modifCONS-2b.sas	05/05/2009-19:02	249.000
APV	(Ct)	H	Sesión-modifCONS-2b.sas	06/05/2009-16:33	352.000
JSM	(Dp)	M	Sesión-modifCONS-2b.sas	06/05/2009-17:34	208.000
PMA	(Ct)	H	Sesión-modifCONS-2b.sas	06/05/2009-18:41	139.667
JRM	(Dp)	H	Sesión-modifCONS-2b.sas	06/05/2009-20:09	113.200
ECD	(Dp)	H	Sesión-modifCONS-2b.sas	07/05/2009-16:31	196.400
LGT	(Dp)	M	Sesión-modifCONS-2b.sas	07/05/2009-17:34	261.400
OIRP	(Ct)	H	Sesión-modifCONS-2b.sas	07/05/2009-18:56	119.000
AJMO	(Dp)	H	Sesión-modifCONS-2b.sas	07/05/2009-19:59	58.600
VSV	(Ct)	M	Sesión-modifCONS-2b.sas	07/05/2009-20:34	623.750
LPS	(Ct)	M	Sesión-modifCONS-2b.sas	08/05/2009-16:40	250.000
MHA	(Ct)	M	Sesión-modifCONS-2b.sas	08/05/2009-17:05	89.000
JMDA	(Ct)	H	Sesión-modifCONS-2b.sas	08/05/2009-18:14	219.800
CVV	(Ct)	H	Sesión-modifCONS-2b.sas	08/05/2009-19:00	153.200
JSV	(Ct)	H	Sesión-modifCONS-2b.sas	08/05/2009-20:08	163.750
CGR	(Dp)	H	Sesión-modifCONS-2b.sas	30/04/2009-16:31	46.600
EGL	(Dp)	H	Sesión-modifCONS-2b.sas	30/04/2009-17:33	68.333
RGD	(Dp)	H	Sesión-modifCONS-2b.sas	30/04/2009-19:16	100.600
FJSH	(Dp)	H	Sesión-modifCONS-2b.sas	30/04/2009-20:16	177.800
AMM	(Dp)	H	Sesión-modifCONS-2b.sas	11/05/2009-17:39	108.400
DTA	(Dp)	H	Sesión-modifCONS-2b.sas	11/05/2009-19:54	281.200
AMG	(Ct)	H	Sesión-modifCONS-2b.sas	12/05/2009-16:39	298.000
GPG	(Dp)	M	Sesión-modifCONS-2b.sas	13/05/2009-16:29	168.000
EOM	(Dp)	M	Sesión-modifCONS-2b.sas	13/05/2009-17:30	76.200
MRP	(Ct)	M	Sesión-modifCONS-2b.sas	11/05/2009-18:24	72.400
EVC	(Dp)	M	Sesión-modifCONS-2b.sas	20/05/2009-13:58	73.000
MOG	(Ct)	M	Sesión-modifCONS-2b.sas	20/05/2009-14:52	265.800
DII	(Ct)	M	Sesión-modifCONS-2b.sas	18/05/2009-16:31	192.400

después de la criba				
		PPI 30	PPI 60	PPI 120
(Dp)	M	46.806	52.398	49.333
(Dp)	H	43.838	52.619	57.157
(Ct)	M	29.103	34.873	37.528
(Ct)	H	35.218	42.320	37.310

		antes de la criba		
		PPI 30	PPI 60	PPI 120
(Dp)	M	32.112	51.351	43.856
(Dp)	H	35.642	57.304	50.996
(Ct)	M	29.867	49.564	44.459
(Ct)	H	22.805	37.756	39.867

Tmax i	Vmax m	Tmax m	Vmax pre30	Tmax pre30	Vmax pre60	Tmax pre60	Vmax pre120
65.600	75.667	62.833	43.833	24.167			
58.333	229.571	59.571	158.000	40.083	133.800	52.800	164.091
63.000	62.000	119.333	83.556	54.889	66.200	55.200	103.750
69.000	161.667	66.000	42.500	45.200	29.778	165.889	38.091
83.333	32.333	65.667	24.333	71.500	22.000	154.000	24.500
62.200	127.000	52.000	54.667	37.444	24.000	42.000	23.400
56.000	203.330	62.000	163.570	47.570	104.000	54.780	97.500
59.800	131.167	65.500	133.570	48.280	123.860	53.860	179.640
76.800	52.670	60.500	28.000	61.070	20.280	78.000	20.710
58.800	26.750	103.000	26.930	93.000	25.430	148.780	26.500
71.750	630.000	67.167	359.380	47.846	305.820	54.100	376.000
67.800	297.000	66.667	129.920	72.380	92.070	129.857	166.230
48.750	79.667	79.333	89.286	39.071	58.231	42.769	76.667
63.600	180.800	68.400	176.857	57.857	135.714	48.071	162.857
66.000	118.000	61.400	69.625	56.375	109.400	83.000	126.857
57.250	95.600	68.600	78.786	42.571	55.600	47.500	34.143
56.600	42.000	59.200	26.400	99.400	25.286	55.286	18.500
53.333	59.750	52.500	23.250	43.750	13.750	49.000	15.000
61.600	78.167	67.833	28.692	39.000	28.000	115.556	24.182
56.400	210.000	62.833	103.357	47.214	32.800	53.600	71.692
63.200	76.200	59.800	77.692	44.154	64.556	57.778	71.000
49.600	236.167	64.000	133.286	54.143	103.750	63.000	149.167
61.250	188.833	62.500	112.929	41.429			
63.000	183.000	64.667	173.643	51.429	87.273	54.818	146.429
57.600	62.000	57.833	32.300	37.700	19.667	57.333	18.429
62.000	57.000	70.330	44.850	164.310	47.000	185.430	44.430
60.000	54.500	59.333	28.000	64.143	24.333	168.333	20.750
60.400	186.333	64.333	141.571	34.500	99.333	37.167	44.000
70.600	82.167	65.667	56.250	43.250			



Habitación

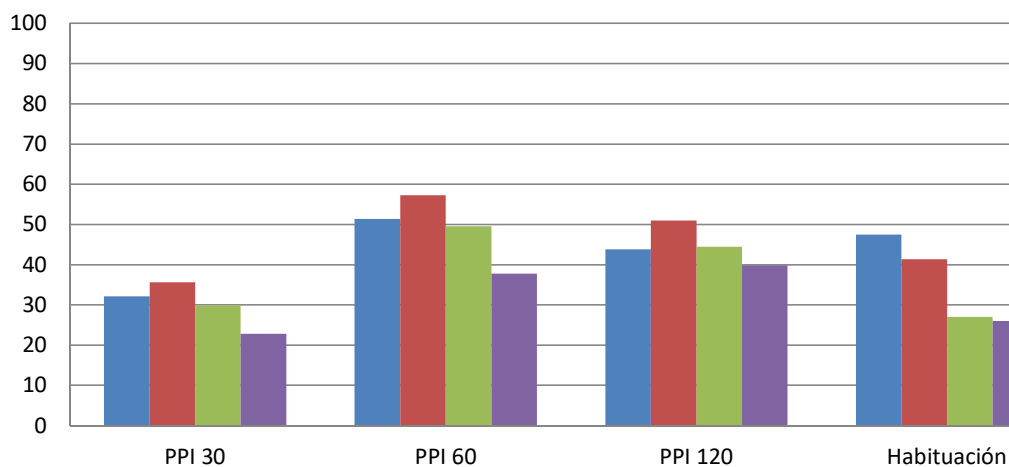
47.479

41.336

27.021

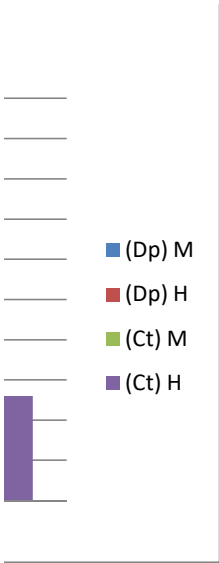
25.993

ANTES DE LA CRIBA



Tmax pre120	PPI 30	PPI 60	PPI 120	Vmax f	Tmax f	Habitación
	42.070			64.400	61.600	43.706
54.000	31.176	41.717	28.523	258.500	59.250	
61.000				96.500	61.000	72.585
50.545	73.711	81.581	76.439	85.200	62.000	59.038
34.000	24.742	31.959	24.227	35.667	128.333	74.463
50.400	56.955	81.102	81.575	80.500	62.500	28.887
90.640	19.554	48.852	52.048	140.600	62.400	28.411
57.700		5.571		57.400	50.800	78.041
55.780	46.839	61.496	60.680	27.400	41.200	76.975
89.300		4.935	0.935	21.800	44.800	62.799
53.840	42.956	51.457	40.317	538.200	94.600	13.715
62.770	56.256	69.000	44.030	245.000	61.400	2.000
76.583		26.907	3.766	101.250	64.500	
55.500	2.181	24.937	9.924	160.000	61.200	27.207
46.571	40.996	7.288		85.000	60.800	44.517
81.571	17.588	41.841	64.286	59.600	57.800	63.603
57.250	37.143	39.796	55.952	35.667	56.667	23.462
493.000	61.088	76.987	74.895	45.667	58.333	33.171
47.818	63.293	64.179	69.064	35.200	55.400	65.010
46.769	50.782	84.381	65.861	127.800	60.000	28.121
56.615		15.281	6.824	95.500	66.500	11.900
61.167	43.563	56.069	36.838	217.800	57.800	22.546
	40.197			181.800	67.200	38.993
55.429	5.113	52.310	19.984	174.800	61.400	
50.143	47.903	68.280	70.276	68.000	56.500	10.761
128.000	21.316	17.544	22.053	57.800	114.400	20.166
98.250	48.624	55.352	61.927	52.000	59.600	28.767
54.000	24.022	46.691	76.386	163.000	59.600	38.676
	31.542			86.800	72.800	54.886





42.070			43.706
56.955	81.102	81.575	28.887
19.554	48.852	52.048	28.411
	4.935	0.935	62.799
37.143	39.796	55.952	23.462
61.088	76.987	74.895	33.171
63.293	64.179	69.064	65.010
50.782	84.381	65.861	28.121
	15.281	6.824	11.900
43.563	56.069	36.838	22.546
46.806	52.398	49.333	34.801

42.070
56.955
19.554
37.143
61.088
63.293
50.782
43.563
46.806

73.711	81.581	76.439	59.038
	5.571		78.041
5.113	52.310	19.984	
47.903	68.280	70.276	10.761
48.624	55.352	61.927	28.767
43.838	52.619	57.157	44.152

31.176	41.717	28.523	
			72.585
24.742	31.959	24.227	74.463
46.839	61.496	60.680	76.975
2.181	24.937	9.924	27.207
40.996	7.288		44.517
17.588	41.841	64.286	63.603
40.197			38.993
29.103	34.873	37.528	56.906

42.956	51.457	40.317	13.715
56.256	69.000	44.030	2.000
	26.907	3.766	
21.316	17.544	22.053	20.166
24.022	46.691	76.386	38.676
31.542			54.886
35.218	42.320	37.310	25.889

SUJETO	Vmax i	Tmax i	Vmax m	Tmax m	Vmax pre30	PPI 30
AGNG	249.000	58.333	229.571	59.571	158.000	31.176
AJMO	58.600	58.800	26.750	103.000	26.930	
AMG	298.000	61.250	188.833	62.500	112.929	40.197
AMM	108.400	63.200	76.200	59.800	77.692	
APV	352.000	63.000	62.000	119.333	83.556	
AVT	114.400	65.600	75.667	62.833	43.833	42.070
CGR	46.600	56.600	42.000	59.200	26.400	37.143
CVV	153.200	66.000	118.000	61.400	69.625	40.996
DII	192.400	70.600	82.167	65.667	56.250	31.542
DTA	281.200	49.600	236.167	64.000	133.286	43.563
ECD	196.400	56.000	203.330	62.000	163.570	19.554
EGL	68.333	53.333	59.750	52.500	23.250	61.088
EOM	76.200	57.600	62.000	57.833	32.300	47.903
EVC	73.000	60.000	54.500	59.333	28.000	48.624
FJSH	177.800	56.400	210.000	62.833	103.357	50.782
GPG	168.000	63.000	183.000	64.667	173.643	5.113
JMDA	219.800	63.600	180.800	68.400	176.857	2.181
JRM	113.200	62.200	127.000	52.000	54.667	56.955
JSM	208.000	69.000	161.667	66.000	42.500	73.711
JSV	163.750	57.250	95.600	68.600	78.786	17.588
LGT	261.400	59.800	131.167	65.500	133.570	
LPS	250.000	67.800	297.000	66.667	129.920	56.256
MHA	89.000	48.750	79.667	79.333	89.286	
MOG	265.800	60.400	186.333	64.333	141.571	24.022
MRP	72.400	62.000	57.000	70.330	44.850	21.316
OIRP	119.000	76.800	52.670	60.500	28.000	46.839
PMA	139.667	83.333	32.333	65.667	24.333	24.742
RGD	100.600	61.600	78.167	67.833	28.692	63.293
VSV	623.750	71.750	630.000	67.167	359.380	42.956

Tmax pre30	Vmax pre60	PPI 60	Tmax pre60	Vmax pre120	PPI 120	Tmax pre120
40.083	133.800	41.717	52.800	164.091	28.523	54.000
93.000	25.430	4.935	148.780	26.500	0.935	89.300
41.429						
44.154	64.556	15.281	57.778	71.000	6.824	56.615
54.889	66.200		55.200	103.750		61.000
24.167						
99.400	25.286	39.796	55.286	18.500	55.952	57.250
56.375	109.400	7.288	83.000	126.857		46.571
43.250						
54.143	103.750	56.069	63.000	149.167	36.838	61.167
47.570	104.000	48.852	54.780	97.500	52.048	90.640
43.750	13.750	76.987	49.000	15.000	74.895	493.000
37.700	19.667	68.280	57.333	18.429	70.276	50.143
64.143	24.333	55.352	168.333	20.750	61.927	98.250
47.214	32.800	84.381	53.600	71.692	65.861	46.769
51.429	87.273	52.310	54.818	146.429	19.984	55.429
57.857	135.714	24.937	48.071	162.857	9.924	55.500
37.444	24.000	81.102	42.000	23.400	81.575	50.400
45.200	29.778	81.581	165.889	38.091	76.439	50.545
42.571	55.600	41.841	47.500	34.143	64.286	81.571
48.280	123.860	5.571	53.860	179.640		57.700
72.380	92.070	69.000	129.857	166.230	44.030	62.770
39.071	58.231	26.907	42.769	76.667	3.766	76.583
34.500	99.333	46.691	37.167	44.000	76.386	54.000
164.310	47.000	17.544	185.430	44.430	22.053	128.000
61.070	20.280	61.496	78.000	20.710	60.680	55.780
71.500	22.000	31.959	154.000	24.500	24.227	34.000
39.000	28.000	64.179	115.556	24.182	69.064	47.818
47.846	305.820	51.457	54.100	376.000	40.317	53.840

Vmax f	Tmax f	Habitación	
258.500	59.250		AGNG
21.800	44.800	62.799	AJMO
181.800	67.200	38.993	AMG
95.500	66.500	11.900	AMM
96.500	61.000	72.585	APV
64.400	61.600	43.706	AVT
			BMG
35.667	56.667	23.462	CGR
85.000	60.800	44.517	CVV
86.800	72.800	54.886	DII
217.800	57.800	22.546	DTA
140.600	62.400	28.411	ECD
45.667	58.333	33.171	EGL
68.000	56.500	10.761	EOM
52.000	59.600	28.767	EVC
127.800	60.000	28.121	FJSH
174.800	61.400		GPG
			IBG
160.000	61.200	27.207	JMDA
80.500	62.500	28.887	JRM
85.200	62.000	59.038	JSM
59.600	57.800	63.603	JSV
57.400	50.800	78.041	LGT
245.000	61.400	2.000	LPS
101.250	64.500		MHA
163.000	59.600	38.676	MOG
			MRB
57.800	114.400	20.166	MRP
			NAF
27.400	41.200	76.975	OIRP
			PBC
35.667	128.333	74.463	PMA
35.200	55.400	65.010	RGD
538.200	94.600	13.715	VSV