

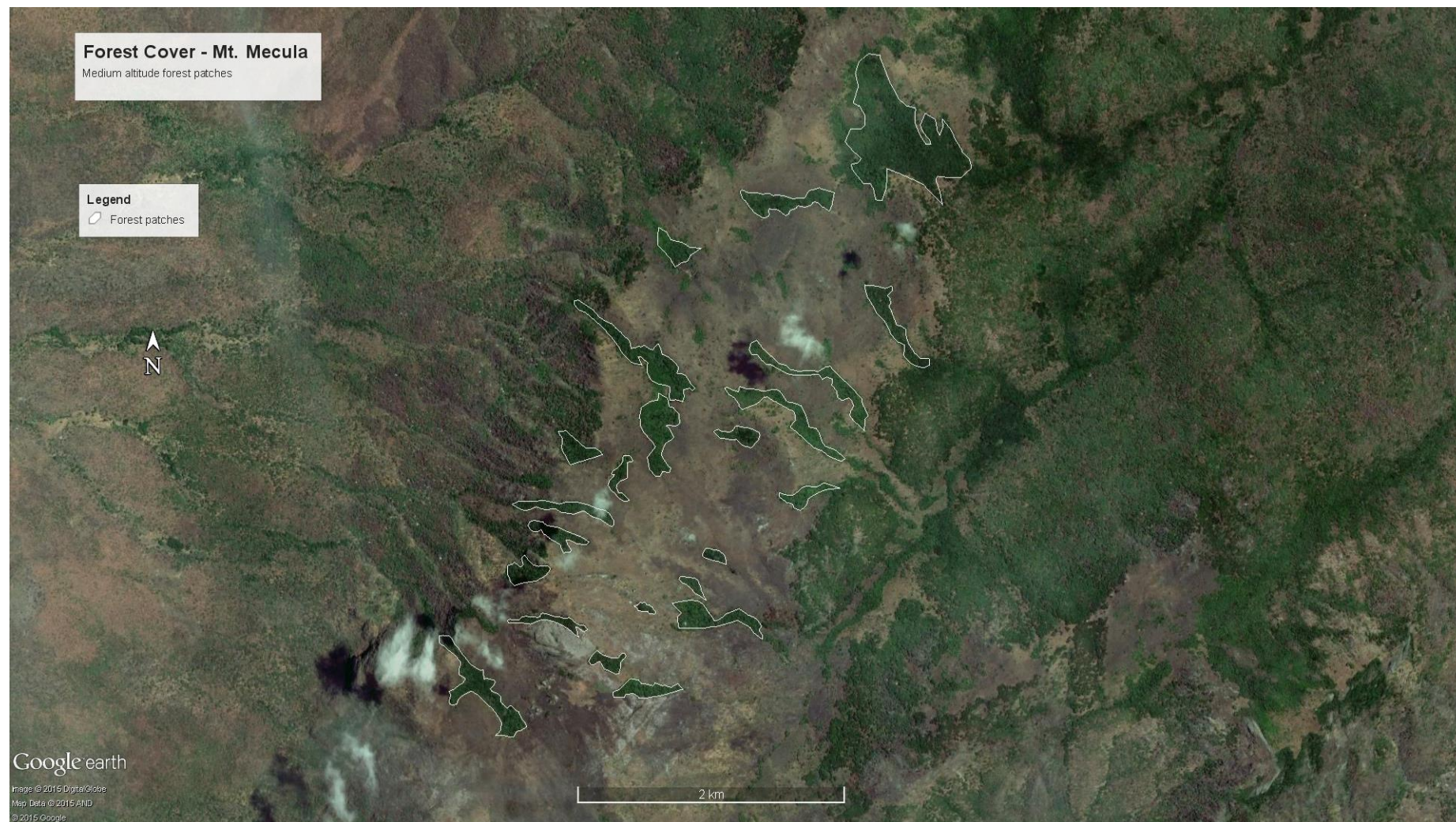
## Supplementary Information

### Birds and biogeography of Mt Mecula in Mozambique's Niassa National Reserve

Claire N Spottiswoode, Lincoln DC Fishpool and Julian L Bayliss

Ostrich 2016. <http://dx.doi.org/10.2989/00306525.2016.1206041>

**Supplementary Information 1.** Satellite imagery of Mt Mecula, showing forest patches. Moist forest patches above 1 000 m altitude are encircled with white lines. Image © DigitalGlobe 2015.



**Supplementary Information 2.** Annotated list of bird species recorded on Mt Mecula. A total of 63 species was recorded. Those in bold (six species) are new to the Niassa National Reserve list (cf. Parker 2005). IUCN Red List Conservation Status shown as follows: EN = Endangered, VU = Vulnerable, NT = Near Threatened.

Hooded Vulture *Necrosyrtes monachus* (EN) – groups of six and two over mountain plateau

**Lappet-faced Vulture *Aegypius tracheliotus*** (VU) – two sitting on sand of dry river bed, affluent of the Lugenda, two over mountain

Brown Snake Eagle *Circaetus cinereus*– two over mountain, one near Lugenda River

Bateleur *Terathopius ecaudatus* (NT) – one over mountain

African Goshawk *Accipiter tachiro* – one heard, one seen on mountain

Augur Buzzard *Buteo augur* – seen on ca. 5 occasions over mountain

Martial Eagle *Polemaetus bellicosus* – at least one adults and one immature frequently seen over mountain

Peregrine *Falco peregrinus* – two together over mountain peak

Crested Guinea-fowl *Guttera edouardi* – three feathers found one forest patch, one sighting in another patch

Hildebrandt's Francolin *Pternistis hildebrandti*– seen on numerous occasions in rocky grassland above forest, but heard in or flushed from thick tall grassland on plateau

Tambourine Dove *Turtur tympanistra* – two caught in mist-nets and seen several times in forest

**Lemon Dove *Aplopelia larvata*** – one caught in mist-net in forest

Purple-crested Turaco *Gallirex porphyreolophus* – heard daily and seen twice in forest

Wood Owl *Strix woodfordi* – heard nightly in forest, also Mbatamila Park Headquarters

Freckled Nightjar *Caprimulgus tristigma* – heard nightly from forest and at Mbatamila Park Headquarters

Green Woodhoopoe *Phoeniculus purpureus* – heard in miombo woodland on mountain

Crowned Hornbill *Tockus alboterminatus* – seen and heard in forest patches on mountain

Trumpeter Hornbill *Bycanistes bucinator* – seen and heard in forest patches on mountain

Green Tinkerbird *Pogoniulus simplex* – heard once from forest edge at 1,300 m

Yellow-fronted Tinkerbird *Pogoniulus chrysoconus* – seen once on plateau and heard once in valley on mountain

Golden-tailed Woodpecker *Campethera abingoni* – one in miombo in valley on mountain

Rock Martin *Ptyonoprogne fuligula* – common around mountain peak and over rocks above forest

Eastern Saw-wing *Psalidoprocne orientalis* – several parties on forest edge and over plateau grassland

Striped Pipit *Anthus lineiventris* – one on rocks above forest

Dark-capped Bulbul *Pycnonotus tricolor* – commonest bird of plateau, including in open grassland with shrubs, up to 1,300 m

**Grey-olive Greenbul *Phyllastrephus cerviniventris*** – commonest (or at least most conspicuous) bird in the forest, several caught in mist-nets

Yellow-bellied Greenbul *Chlorocichla flaviventris* – common in forest, two caught in mist-nets

White-browed Robin Chat *Cossypha heuglini* – common and vocal in all forest patches. One caught in mist-net

Bearded Scrub-Robin *Cercotrichas quadrivirgata* – three caught in mist-nets in forest at 1,200 m

Kurrichane Thrush *Turdus libonyanus*– seen and heard in miombo woodland in mountain valley

Mocking Cliff-chat *Thamnolaea cinnamomeiventris* – at least two pairs on summit

Familiar Chat *Cercomela familiaris* – numerous on summit and in rocks above forest

**Dark-capped Yellow Warbler *Chloropeta natalensis*** – one seen at water seep above forest

Lazy Cisticola *Cisticola aberrans* – common on mountain, from top of miombo woodland to summit.

Croaking Cisticola *Cisticola natalensis* – heard once near stream below main forest patch

Tawny-flanked Prinia *Prinia subflava* – fairly common on plateau grassland up to 1,300 m

Grey-backed Camaroptera *Camaroptera brevicaudata* – fairly common in forest

Yellow-breasted Apalis *Apalis flavidia* – common in all forest

Pale Batis *Batis soror* – heard in mountain valley

Black-throated Wattle-eye *Platysteira peltata* – heard, seen and one pair caught in mist-nets in forest

Arrow-marked Babbler *Turdoides jardineii* – a group seen and heard at forest edge

Yellow White-eye *Zosterops sengalensis* – heard once and seen once in forest at 1,200 m

Variable Sunbird *Cinnyris venustus* – abundant in montane grassland and forest edge

Collared Sunbird *Hedydipna collaris* – one pair at forest edge

Olive Sunbird *Cyanomitra olivacea* – one caught in mist-net and heard several times in forest

Scarlet-chested Sunbird *Chalcomitra senegalensis* – several seen in montane grassland

Tropical Boubou *Laniarius aethiopicus* – several seen and heard at forest edge

Black-backed Puffback *Dryoscopus cubla* – one pair seen and heard at forest edge

Black-crowned Tchagra *Tchagra senegalus* – heard in grassland/forest edge and in mountain valley

Brown-crowned Tchagra *Tchagra australis* – heard in grassland/forest edge and mountain valley

Fork-tailed Drongo *Dicrurus adsimilis* – one in miombo woodland in mountain valley

White-necked Raven *Corvus albicollis* – three seen together above mountain

Black-headed Oriole *Oriolus larvatus* – heard in miombo woodland on mountain slopes

Red-winged Starling *Onychognathus morio* – common on mountain

Spectacled Weaver *Ploceus ocularis* – one seen at forest edge

Forest Weaver *Ploceus bicolor* – regularly heard, and one family party caught in mist-nets in forest

**Golden Weaver *Ploceus xanthops*** – one seen near stream in the valley east of Mt Mecula

Red-collared Widow *Euplectes ardens* – extremely common in montane grassland.

Males in full breeding plumage; one bird with yellow, not red, coloration

Common Waxbill *Estrilda astrild* – several in montane grassland; also drinking / bathing at seep beside forest edge

African Firefinch *Lagonosticta rubricata* – at least one pair drinking / bathing at seep beside forest edge

Red-backed Mannikin *Spermestes bicolor* – a group drinking / bathing at seep beside forest edge; also seen in miombo woodland

Yellow-fronted Canary *Crithagra mozambicus* – fairly common in montane grassland and bush up to the summit

**Vincent's (Cape) Bunting *Emberiza (capensis) vincenti*** – seen twice on summit and among rocks above camp.