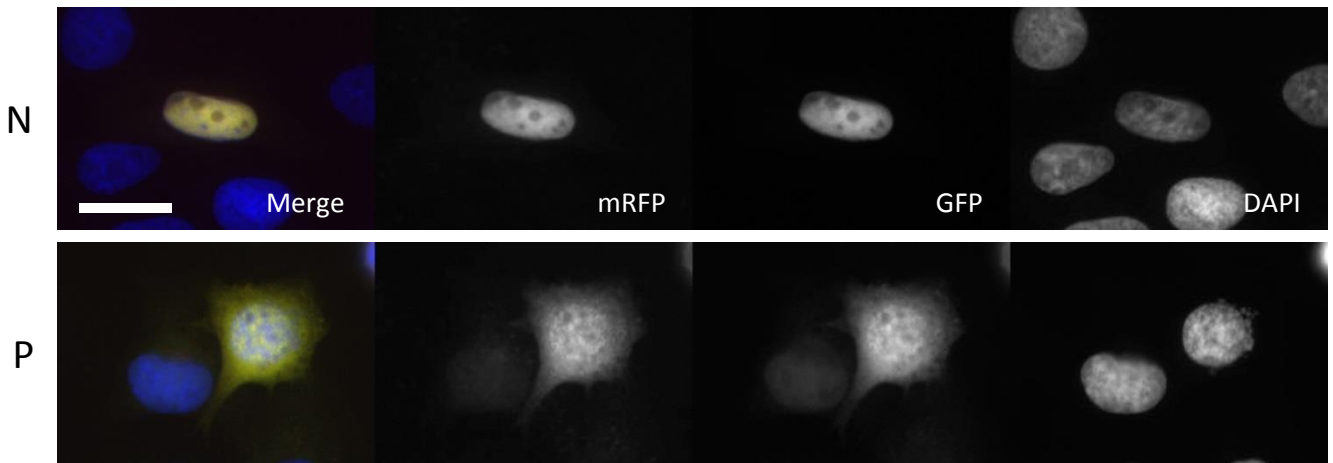
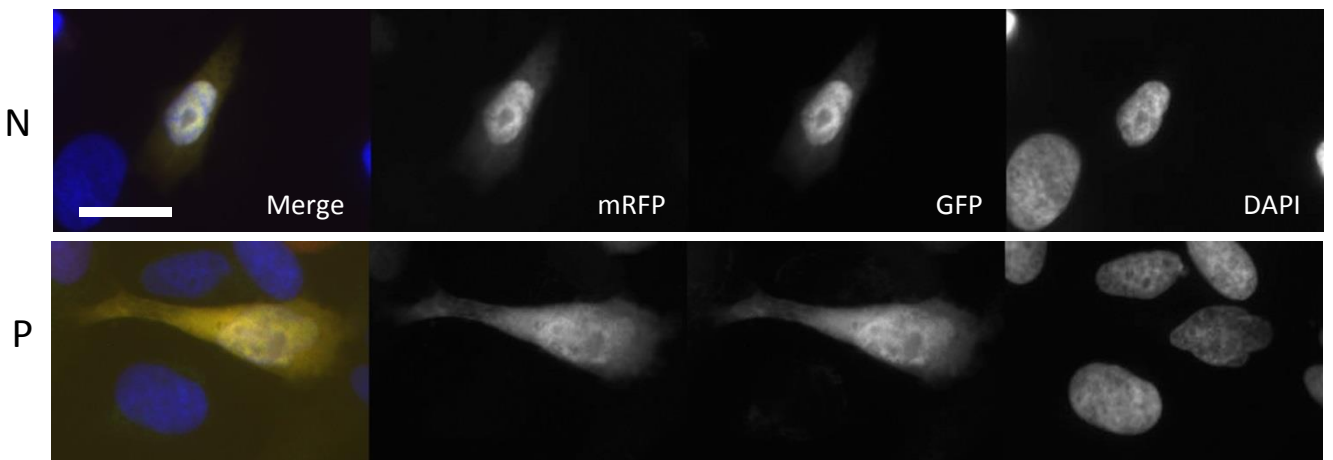


**A**

Cotransfection : mRFP-Cdc25A Wild type + GFP-Cdc25A Wild type

**B**

Cotransfection : mRFP-Cdc25A Wild type + GFP-Cdc25A S283A mutant



**Supplementary Figure S2. Wild type Cdc25A and its S283A mutant show identical intracellular localization in transfected U2OS cells.** Expression plasmids coding for the wild-type and mutant forms of Cdc25A N-terminally fused with either mRFP (Cdc25A wild type) or with GFP (Cdc25A wild type or S283A mutant) were cotransfected in U2OS cells and analyzed by fluorescence microscopy. In this cell line Cdc25A is predominantly nuclear but can also show pan-cellular localization in a small fraction of the cells. (A) Control cotransfection of fusions with wild type Cdc25A. As expected the cotransfected protein fusions of wild type Cdc25A (mRFP-Cdc25A + GFP-Cdc25A) showed identical localization, whether Cdc25A is localized in the nucleus (N: nuclear) or distributed in the whole cell (P: pan-cellular). (B) No differences can be observed between fluorescent protein fusions with wild-type Cdc25A or with the S283A mutant. Representative images are presented. Scale bar : 20µm.