

The genetic basis of inherited retinal disease in 271 individuals with a confirmed or provisional molecular diagnosis.

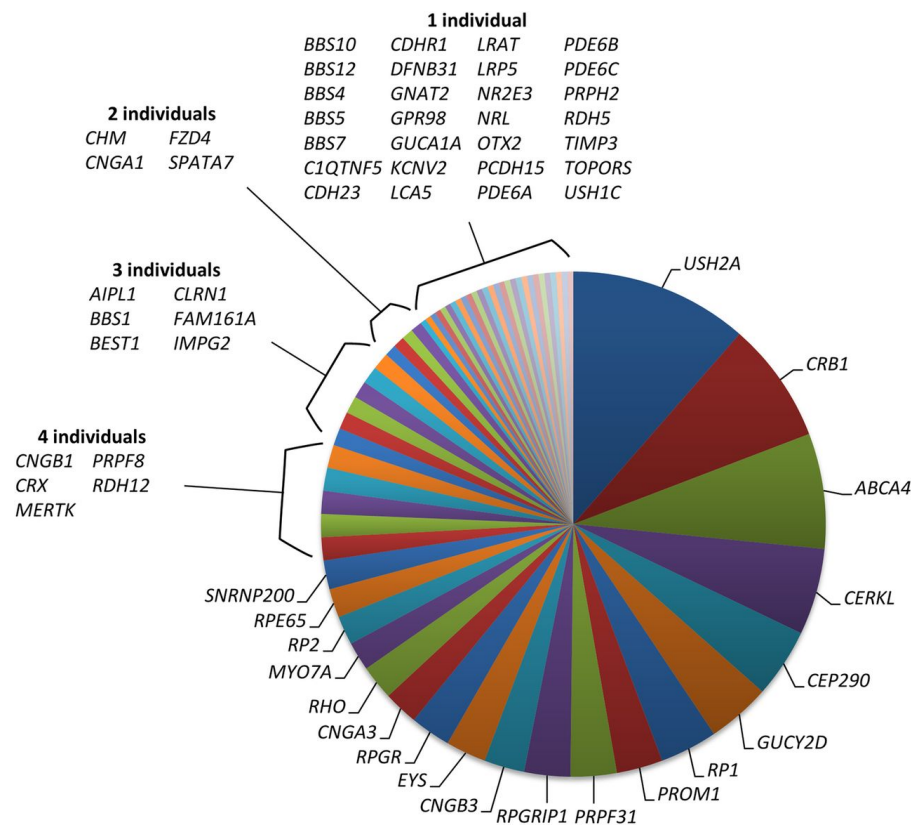


Figure 2: The genetic basis of inherited retinal disease in 271 individuals with a confirmed or provisional molecular diagnosis. Each segment illustrates the number of individuals with genetic variants determined as a cause of inherited retinal disease.

Jamie M Ellingford et al. *J Med Genet* doi:10.1136/jmedgenet-2016-103837