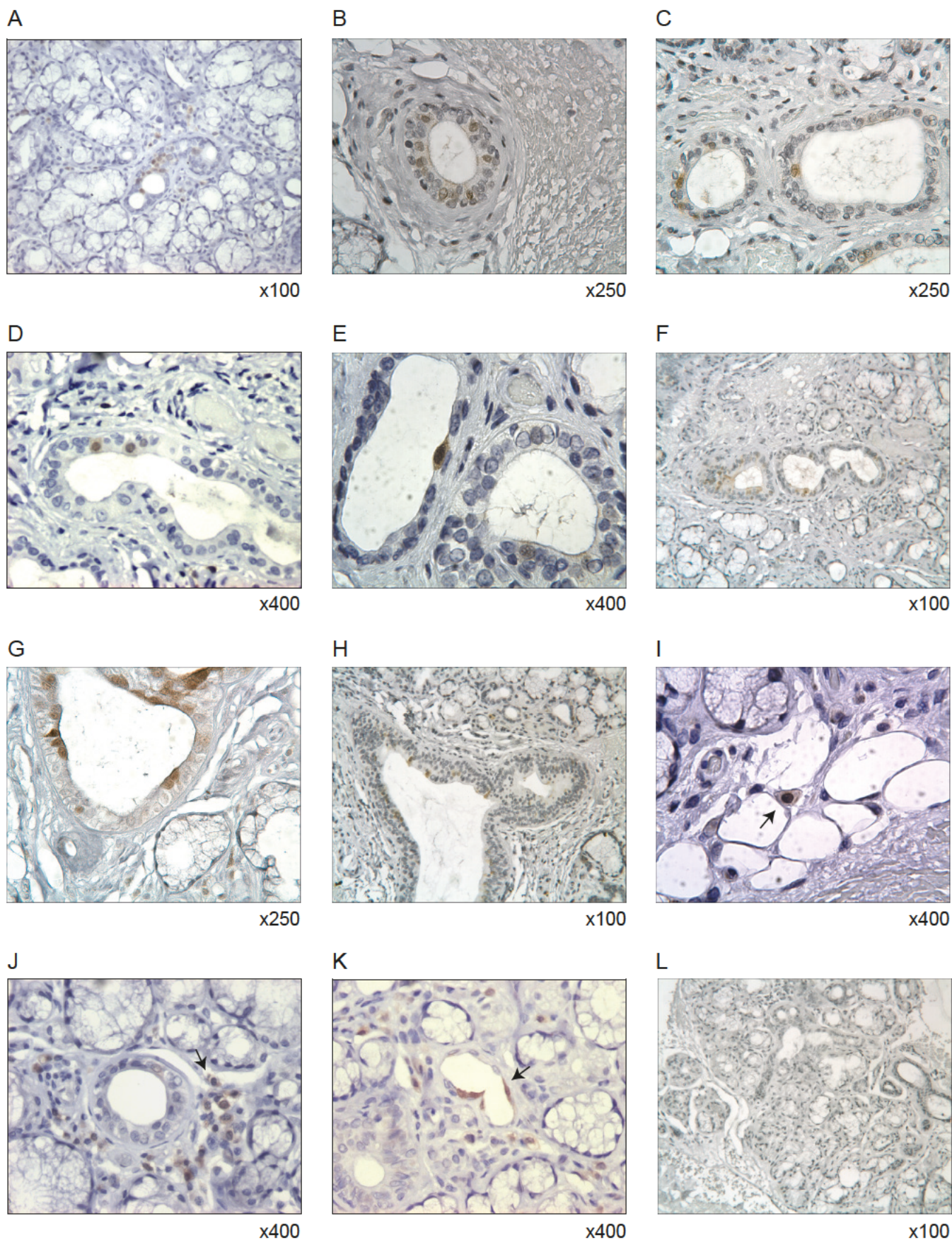


S2 Figure



S2 Figure. A – H: Images of p16 positive cells in human labial salivary gland intercalated, intra – and interlobular secretory ducts (original magnification as indicated). I and J: Single cells of the stroma, displaying p16 immunoreactivity (arrows). K: p16 positive endothelial cells (arrow). L: Control image with primary antibody omitted.