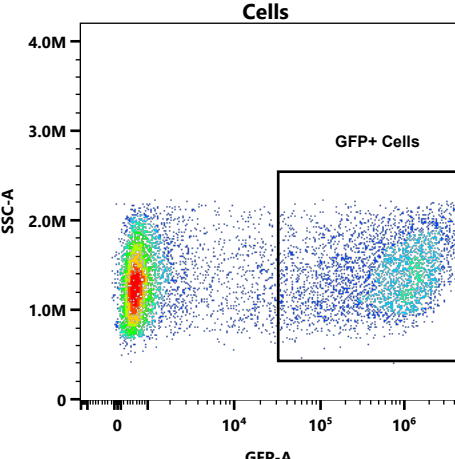
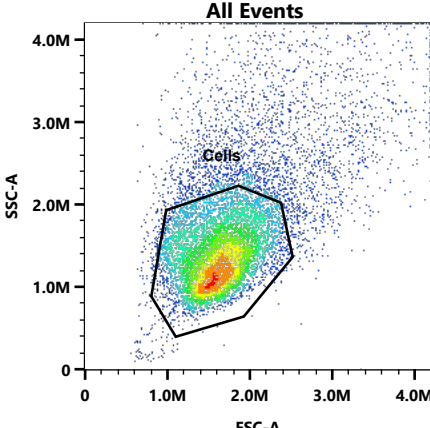
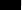




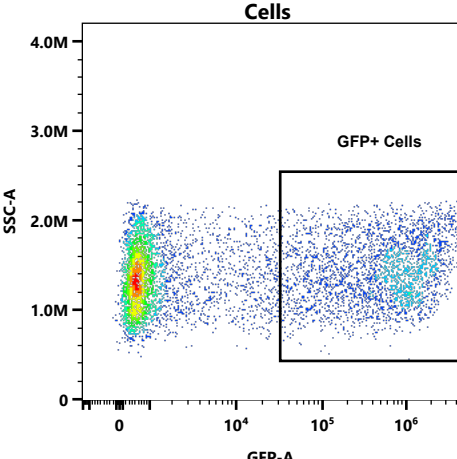
Population	% Parent	Count
<div> <div></div> <div>All Events</div> </div>	100.00	10,000
<div> <div></div> <div>Cells</div> </div>	73.97	7,397
<div> <div></div> <div>GFP+ Cells</div> </div>	45.38	3,357



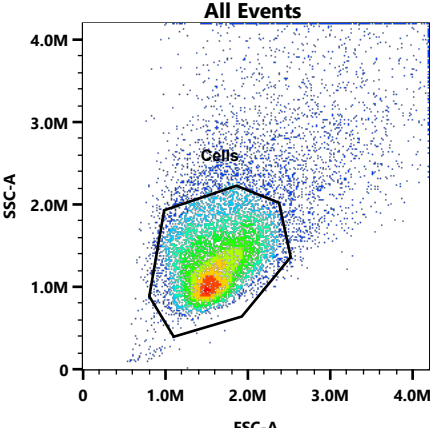
Statistics Table 1						
20241002-GSIN-Unmixed-TubeRack_001-GSIN-A3 CMV-mEGFP-Signed-1						
Gate	Count	% Parent	% Grand Parent	% Total	Count/uL	Mean GFP-Intensity
All Events	10,000	100.00	100.00	100.00	558.97	519,580
Cells	7,397	73.97	73.97	73.97	413.47	402,790
GFP+ Cells	3,357	45.38	33.57	33.57	187.65	867,575

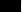




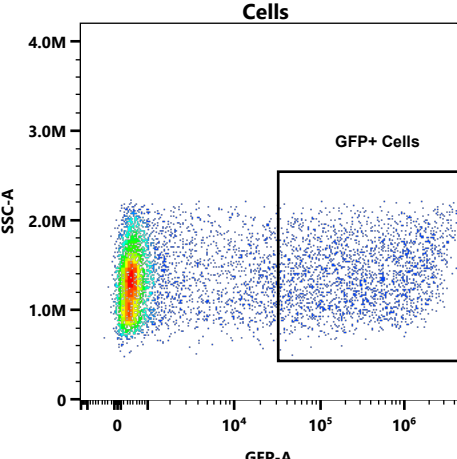
Population	% Parent	Count
▼  All Events	100.00	10,000
▼  Cells	65.44	6,544
 GFP+ Cells	45.55	2,981



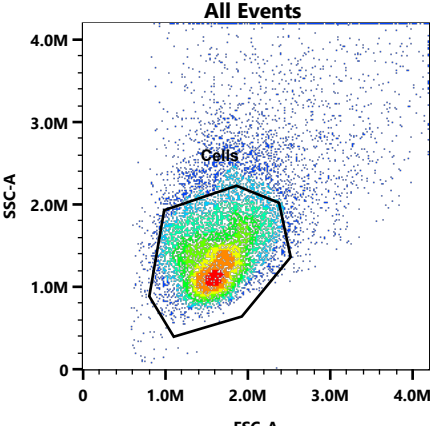
Statistics Table 1						
20241002-GSIN-Unmixed-TubeRack_001-GSIN-A4 pV18-1						
Gate	Count	% Parent	% Grand Parent	% Total	Count/uL	Mean GFP-Intensity
All Events	10,000	100.00	100.00	100.00	465.12	543,127
Cells	6,544	65.44	65.44	65.44	304.37	378,930
GFP+ Cells	2,981	45.55	29.81	29.81	138.65	800,108



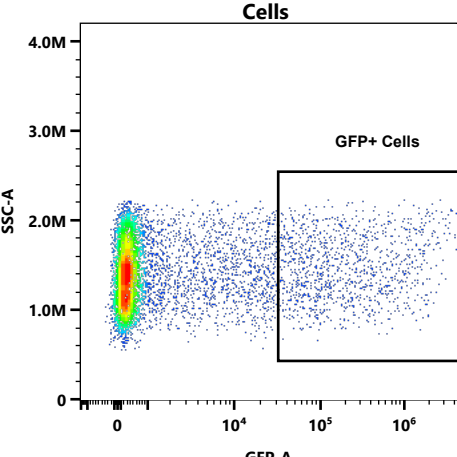
Population	% Parent	Count
▼  All Events	100.00	10,000
▼  Cells	66.01	6,601
 GFP+ Cells	34.16	2,255



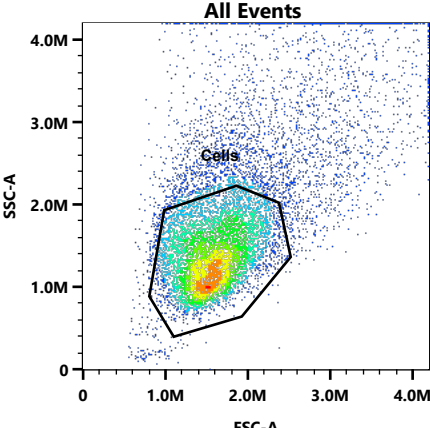
Statistics Table 1						
20241002-GSIN-Unmixed-TubeRack_001-GSIN-A5 pV19-1						
Gate	Count	% Parent	% Grand Parent	% Total	Count/uL	Mean GFP-Intensity
All Events	10,000	100.00	100.00	100.00	606.43	344,771
Cells	6,601	66.01	66.01	66.01	400.30	224,530
GFP+ Cells	2,255	34.16	22.55	22.55	136.75	636,217



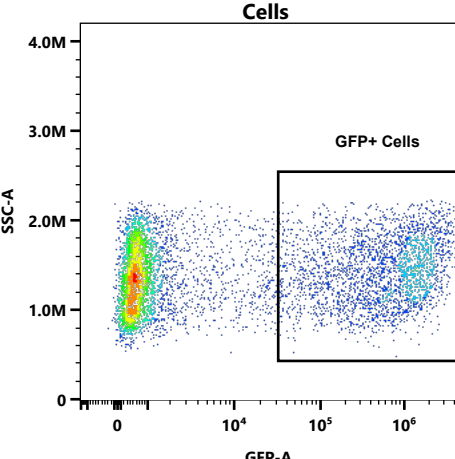
Population		% Parent	Count
▼	<div><div></div><div>All Events</div></div>	100.00	10,000
▼	<div><div></div><div>Cells</div></div>	68.53	6,853
	<div><div></div><div>GFP+ Cells</div></div>	16.42	1,125



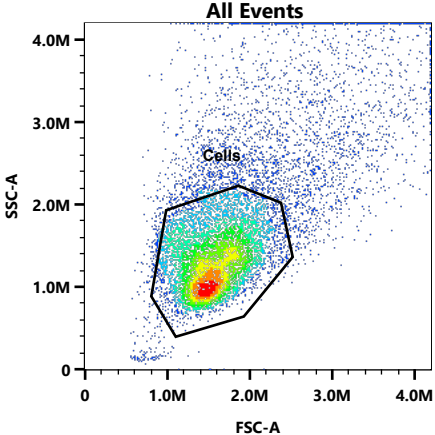
20241002-GSIN-Unmixed-TubeRack_001-GSIN-A6 pV20-1						
Gate	Count	% Parent	% Grand Parent	% Total	Count/uL	Mean GFP-
All Events	10,000	100.00	100.00	100.00	436.30	128,178
Cells	6,853	68.53	68.53	68.53	299.00	76,591
GFP+ Cells	1,125	16.42	11.25	11.25	49.08	435,549



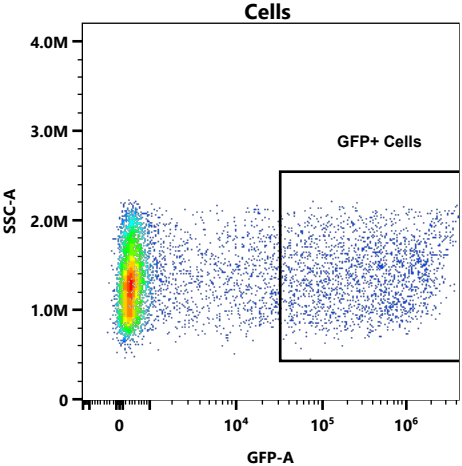
Population	% Parent	Count
<div> <div></div> <div>All Events</div> </div>	100.00	10,000
<div> <div></div> <div>Cells</div> </div>	62.63	6,263
<div> <div></div> <div>GFP+ Cells</div> </div>	44.44	2,783



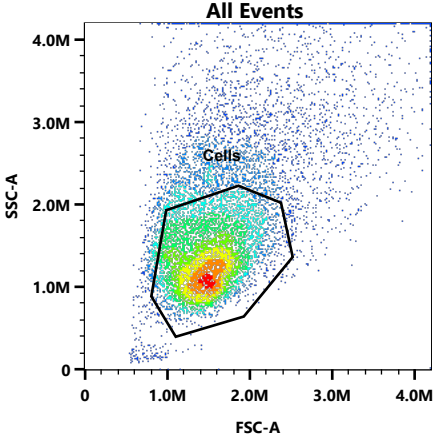
Statistics Table 1						
20241002-GSIN-Unmixed-TubeRack_001-GSIN-B3 CMV-mEGFP-Signed-2						
Gate	Count	% Parent	% Grand Parent	% Total	Count/uL	Mean GFP-Intensity
All Events	10,000	100.00	100.00	100.00	646.83	570,001
Cells	6,263	62.63	62.63	62.63	405.11	383,838
GFP+ Cells	2,783	44.44	27.83	27.83	180.01	840,776



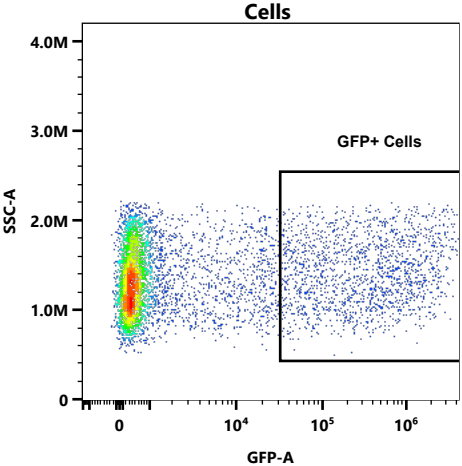
20241002-GSIN-Unmixed-TubeRack_001-GSIN-B4 pV18-2			
Population		% Parent	Count
▼	<div><div></div><div>All Events</div></div>	100.00	10,000
▼	<div><div></div><div>Cells</div></div>	62.58	6,258
	<div><div></div><div>GFP+ Cells</div></div>	30.28	1,895



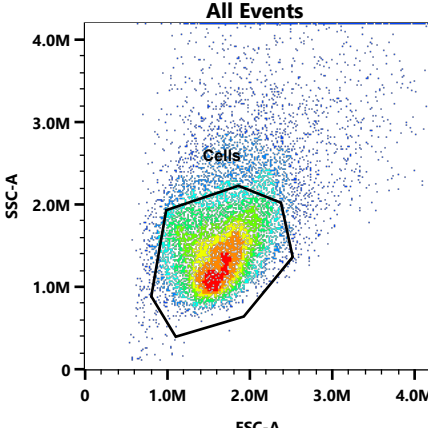
Statistics Table 1						
20241002-GSIN-Unmixed-TubeRack_001-GSIN-B4 pV18-2						
Gate	Count	% Parent	% Grand Parent	% Total	Count/uL	Mean GFP-
All Events	10,000	100.00	100.00	100.00	713.78	292,603
Cells	6,258	62.58	62.58	62.58	446.68	189,501
GFP+ Cells	1,895	30.28	18.95	18.95	135.26	615,727

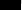




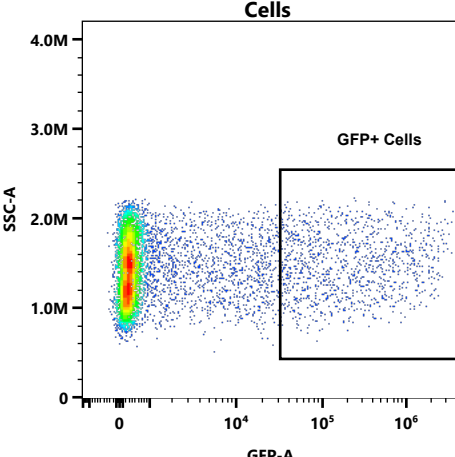
20241002-GSIN-Unmixed-TubeRack_001-GSIN-B5 pV19-2			
Population		% Parent	Count
▼	<div><div></div><div>All Events</div></div>	100.00	10,000
▼	<div><div></div><div>Cells</div></div>	58.87	5,887
	<div><div></div><div>GFP+ Cells</div></div>	27.94	1,645



Statistics Table 1						
20241002-GSIN-Unmixed-TubeRack_001-GSIN-B5 pV19-2						
Gate	Count	% Parent	% Grand Parent	% Total	Count/uL	Mean GFP-
All Events	10,000	100.00	100.00	100.00	652.32	257,118
Cells	5,887	58.87	58.87	58.87	384.02	180,347
GFP+ Cells	1,645	27.94	16.45	16.45	107.31	618,177

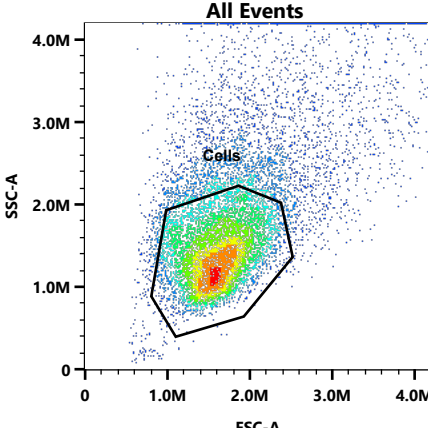


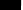


Population	% Parent	Count
▼  All Events	100.00	10,000
▼  Cells	66.89	6,689
 GFP+ Cells	16.76	1,121

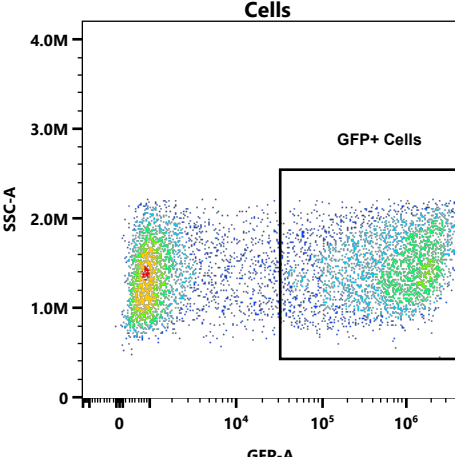


20241002-GSIN-Unmixed-TubeRack_001-GSIN-B6 pV20-2						
Gate	Count	% Parent	% Grand Parent	% Total	Count/uL	Mean GFP-
All Events	10,000	100.00	100.00	100.00	327.98	122,493
Cells	6,689	66.89	66.89	66.89	219.38	78,080
GFP+ Cells	1,121	16.76	11.21	11.21	36.77	439,683

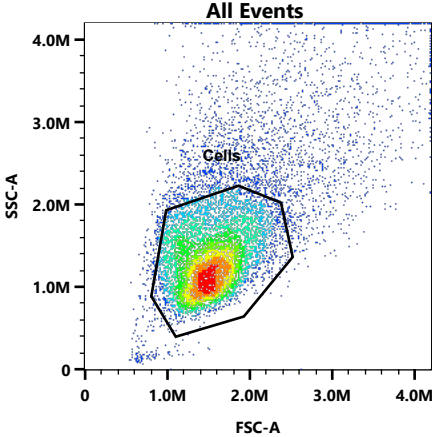




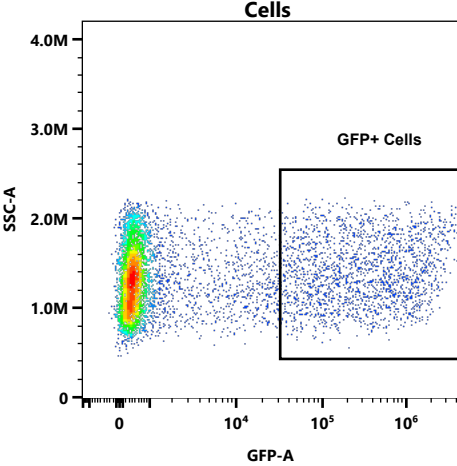
Population			% Parent	Count
▼		All Events	100.00	10,000
▼		Cells	60.83	6,083
		GFP+ Cells	53.25	3,239



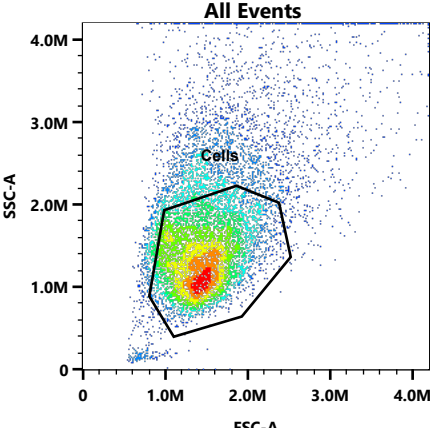
20241002-GSIN-Unmixed-TubeRack_001-GSIN-C3 CMV-mEGFP-Signed-3						
Gate	Count	% Parent	% Grand Parent	% Total	Count/uL	Mean GFP-
All Events	10,000	100.00	100.00	100.00	407.00	764,987
Cells	6,083	60.83	60.83	60.83	247.58	507,108
GFP+ Cells	3,239	53.25	32.39	32.39	131.83	907,585



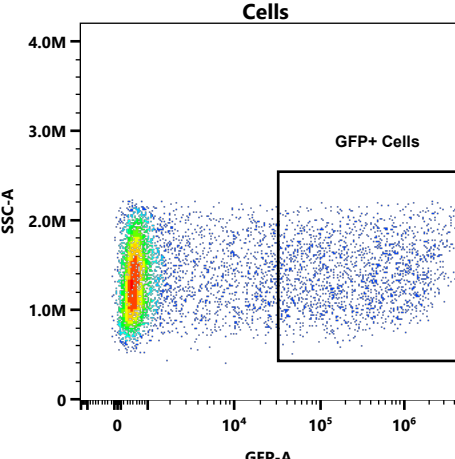
Population		% Parent	Count
▼	<div><div></div>All Events</div>	100.00	10,000
▼	<div><div></div>Cells</div>	66.14	6,614
	<div><div></div>GFP+ Cells</div>	29.63	1,960



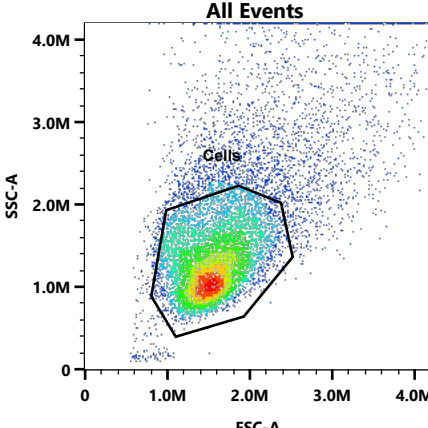
Statistics Table 1						
20241002-GSIN-Unmixed-TubeRack_001-GSIN-C4 pV18-3						
Gate	Count	% Parent	% Grand Parent	% Total	Count/uL	Mean GFP-
All Events	10,000	100.00	100.00	100.00	669.79	277,135
Cells	6,614	66.14	66.14	66.14	443.00	189,429
GFP+ Cells	1,960	29.63	19.60	19.60	131.28	609,615

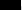




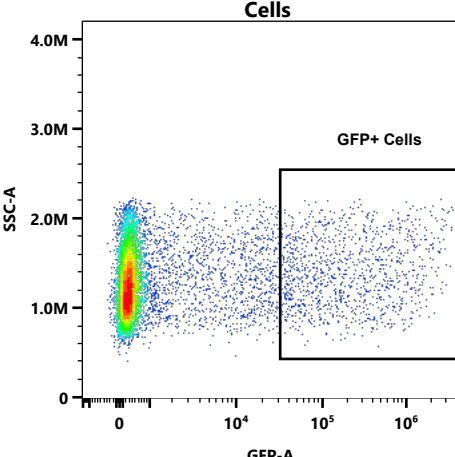
20241002-GSIN-Unmixed-TubeRack_001-GSIN-C5 pV19-3			
Population		% Parent	Count
▼	<div><div></div><div>All Events</div></div>	100.00	10,000
▼	<div><div></div><div>Cells</div></div>	62.70	6,270
	<div><div></div><div>GFP+ Cells</div></div>	28.92	1,813



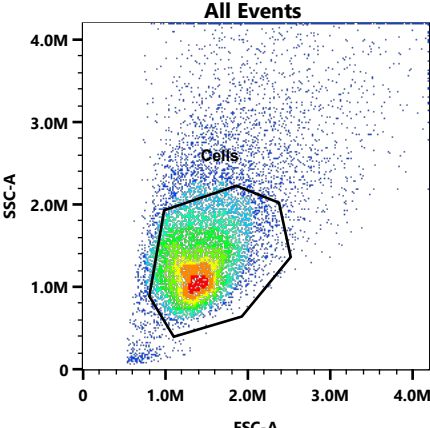
Statistics Table 1						
20241002-GSIN-Unmixed-TubeRack_001-GSIN-C5 pV19-3						
Gate	Count	% Parent	% Grand Parent	% Total	Count/uL	Mean GFP-Intensity
All Events	10,000	100.00	100.00	100.00	493.83	239,472
Cells	6,270	62.70	62.70	62.70	309.63	178,069
GFP+ Cells	1,813	28.92	18.13	18.13	89.53	592,157



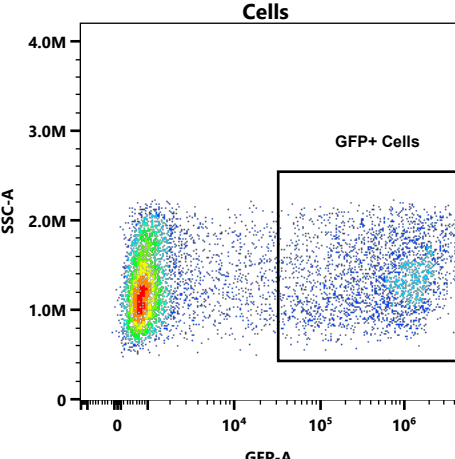
Population	% Parent	Count
▼  All Events	100.00	10,000
▼  Cells	67.60	6,760
 GFP+ Cells	16.97	1,147



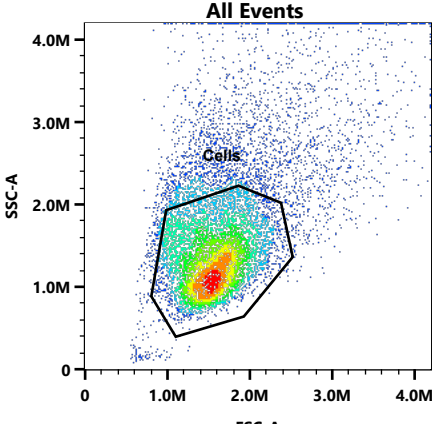
Statistics Table 1						
20241002-GSIN-Unmixed-TubeRack_001-GSIN-C6 pV20-3						
Gate	Count	% Parent	% Grand Parent	% Total	Count/uL	Mean GFP-
All Events	10,000	100.00	100.00	100.00	646.83	131,650
Cells	6,760	67.60	67.60	67.60	437.26	76,619
GFP+ Cells	1,147	16.97	11.47	11.47	74.19	429,563

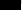
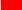



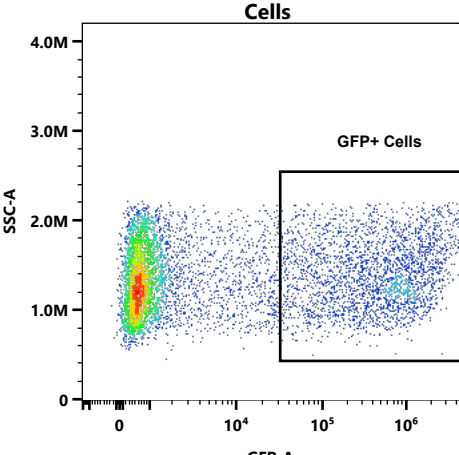
Population	% Parent	Count
<div> <div></div> <div>All Events</div> </div>	100.00	10,000
<div> <div></div> <div>Cells</div> </div>	65.46	6,546
<div> <div></div> <div>GFP+ Cells</div> </div>	40.15	2,628

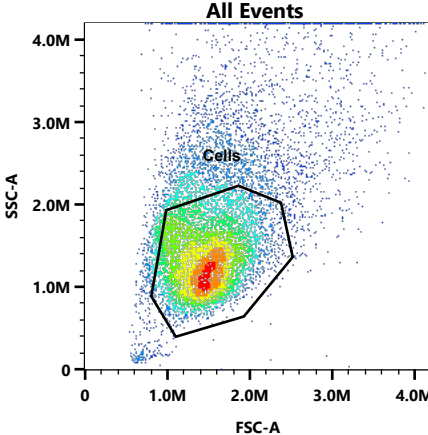


Statistics Table 1						
20241002-GSIN-Unmixed-TubeRack_001-GSIN-D3 CMV-mEGFP-Signed-4						
Gate	Count	% Parent	% Grand Parent	% Total	Count/uL	Mean GFP-Intensity
All Events	10,000	100.00	100.00	100.00	575.04	482,745
Cells	6,546	65.46	65.46	65.46	376.42	359,016
GFP+ Cells	2,628	40.15	26.28	26.28	151.12	850,324

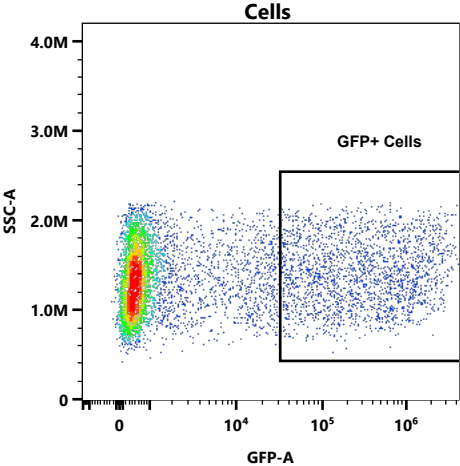


Population	% Parent	Count
▼  All Events	100.00	10,000
▼  Cells	66.40	6,640
 GFP+ Cells	39.67	2,634

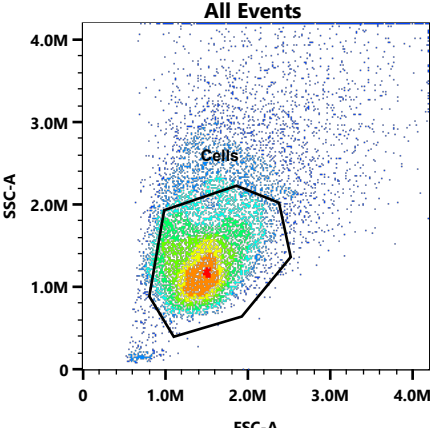
[illegible]

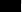




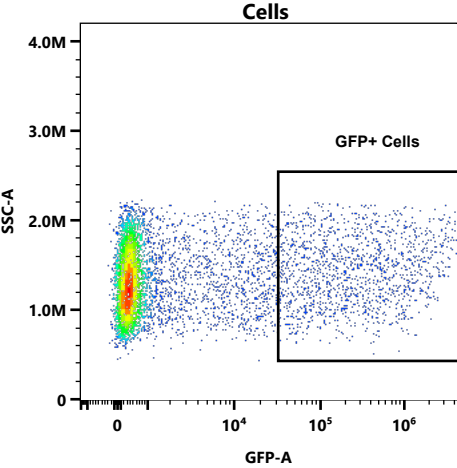
20241002-GSIN-Unmixed-TubeRack_001-GSIN-D5 pV19-4			
Population		% Parent	Count
▼	<div><div></div><div>All Events</div></div>	100.00	10,000
▼	<div><div></div><div>Cells</div></div>	63.47	6,347
	<div><div></div><div>GFP+ Cells</div></div>	32.69	2,075



Statistics Table 1						
20241002-GSIN-Unmixed-TubeRack_001-GSIN-D5 pV19-4						
Gate	Count	% Parent	% Grand Parent	% Total	Count/uL	Mean GFP-
All Events	10,000	100.00	100.00	100.00	431.97	273,705
Cells	6,347	63.47	63.47	63.47	274.17	201,954
GFP+ Cells	2,075	32.69	20.75	20.75	89.63	592,775

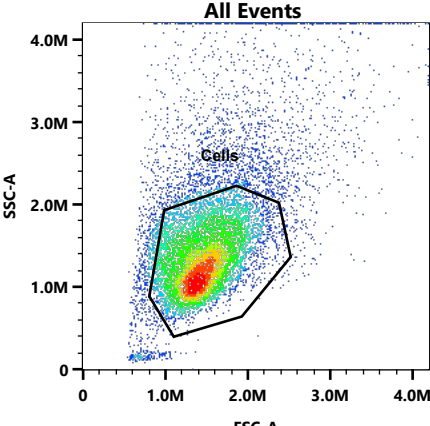


Population	% Parent	Count
▼  <u>All Events</u>	100.00	10,000
▼  <u>Cells</u>	60.09	6,009
 <u>GFP+ Cells</u>	23.55	1,415

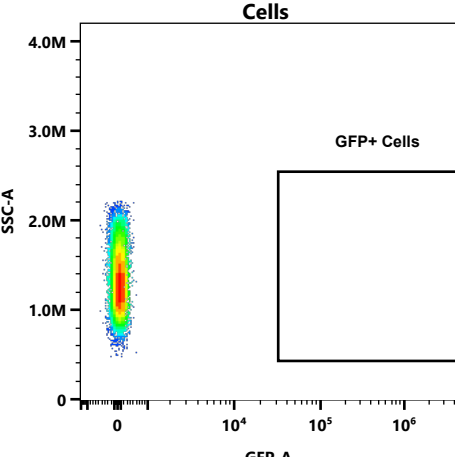


Statistics Table 1						
20241002-GSIN-Unmixed-TubeRack_001-GSIN-D6 pV20-4						
Gate	Count	% Parent	% Grand Parent	% Total	Count/uL	Mean GFP- Intensity
All Events	10,000	100.00	100.00	100.00	442.87	217,267
Cells	6,009	60.09	60.09	60.09	266.12	131,352
GFP+ Cells	1,415	23.55	14.15	14.15	62.67	533,860

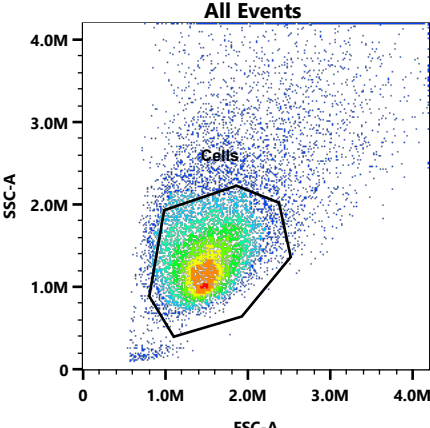




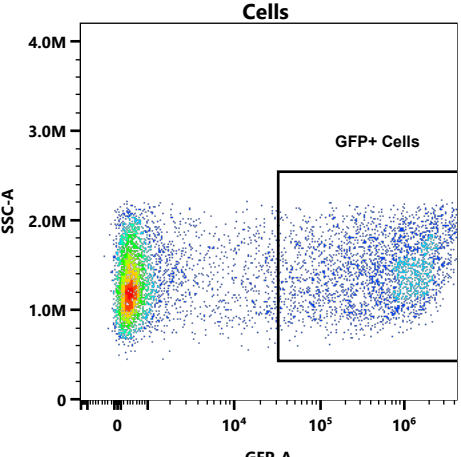
20241002-GSIN-Unmixed-TubeRack_001-GSIN-D1 Unstained-4			
Population		% Parent	Count
▼	<div><div></div><div>All Events</div></div>	100.00	10,000
▼	<div><div></div><div>Cells</div></div>	68.57	6,857
	<div><div></div><div>GFP+ Cells</div></div>	0.00	0



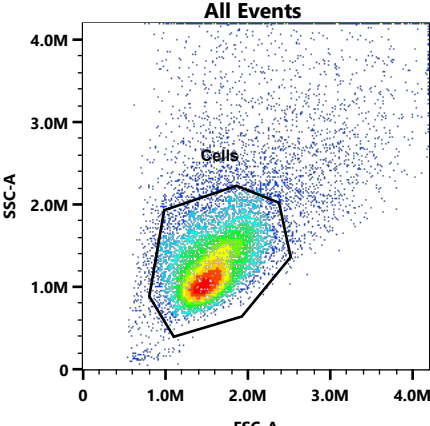
Statistics Table 1						
20241002-GSIN-Unmixed-TubeRack_001-GSIN-D1 Unstained-4						
Gate	Count	% Parent	% Grand Parent	% Total	Count/uL	Mean GFP-
All Events	10,000	100.00	100.00	100.00	66.66	-13
Cells	6,857	68.57	68.57	68.57	45.71	-12
GFP+ Cells	0	0.00	0.00	0.00	0.00	N/A



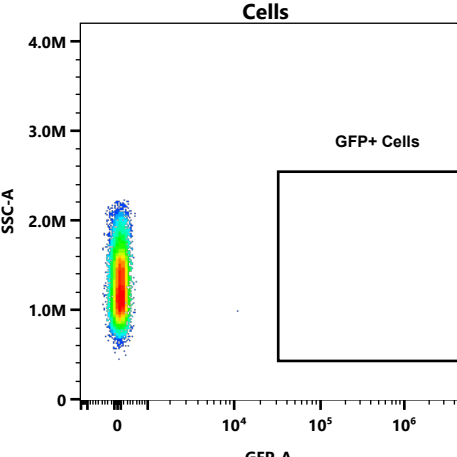
Population		% Parent	Count
▼	All Events	100.00	10,000
▼	Cells	60.89	6,089
	GFP+ Cells	44.01	2,680



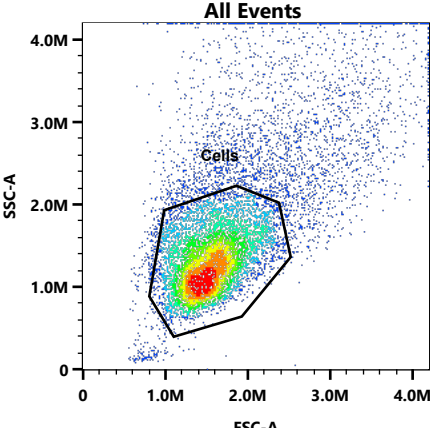
Statistics Table 1						
20241002-GSIN-Unmixed-TubeRack_001-GSIN-D2 CMV-mEGFP-Unsigned-4						
Gate	Count	% Parent	% Grand Parent	% Total	Count/uL	Mean GFP-Intensity
All Events	10,000	100.00	100.00	100.00	138.43	592,119
Cells	6,089	60.89	60.89	60.89	84.29	399,671
GFP+ Cells	2,680	44.01	26.80	26.80	37.10	869,574



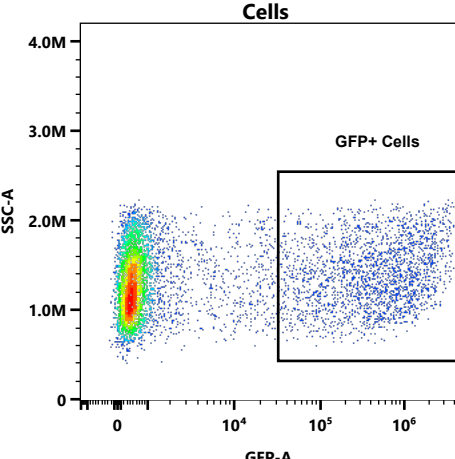
20241002-GSIN-Unmixed-TubeRack_001-GSIN-C1 Unstained-3			
Population		% Parent	Count
▼	<div><div></div><div>All Events</div></div>	100.00	10,000
▼	<div><div></div><div>Cells</div></div>	69.35	6,935
	<div><div></div><div>GFP+ Cells</div></div>	0.00	0



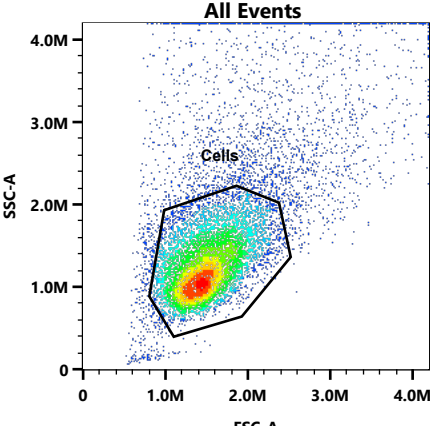
Statistics Table 1						
20241002-GSIN-Unmixed-TubeRack_001-GSIN-C1 Unstained-3						
Gate	Count	% Parent	% Grand Parent	% Total	Count/uL	Mean GFP-
All Events	10,000	100.00	100.00	100.00	412.03	13
Cells	6,935	69.35	69.35	69.35	285.74	12
GFP+ Cells	0	0.00	0.00	0.00	0.00	N/A



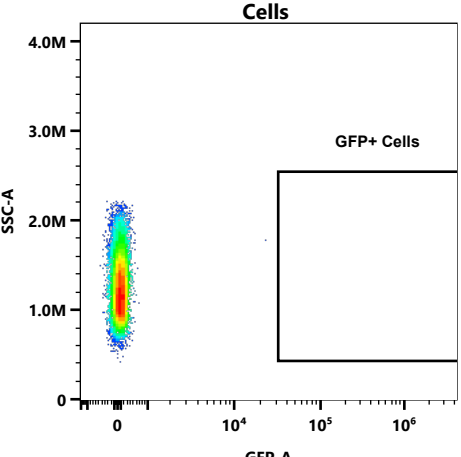
20241002-GSIN-Unmixed-TubeRack_001-GSIN-C2 CMV-mEGFP-Unsig...			
Population		% Parent	Count
▼	<div><div></div>All Events</div>	100.00	10,000
▼	<div><div></div>Cells</div>	65.24	6,524
	<div><div></div>GFP+ Cells</div>	34.29	2,237



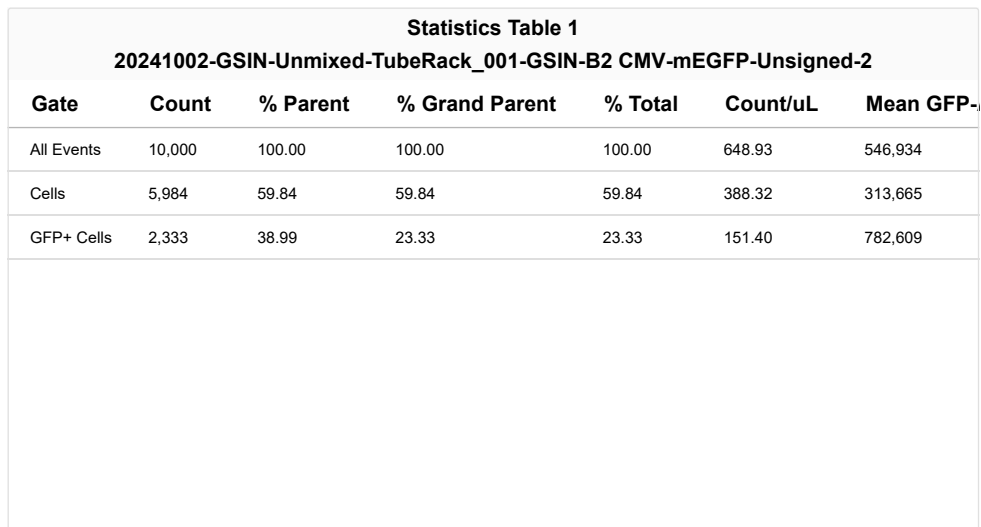
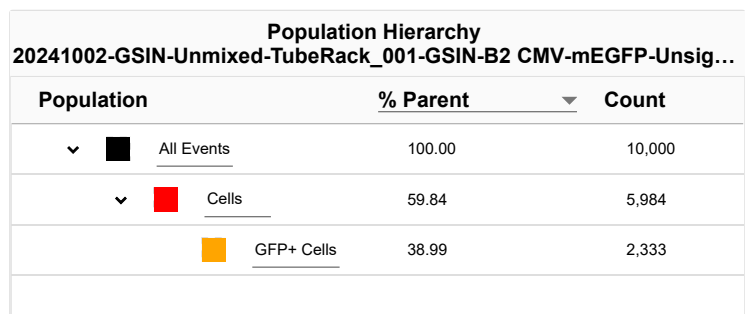
Statistics Table 1						
20241002-GSIN-Unmixed-TubeRack_001-GSIN-C2 CMV-mEGFP-Unsigned-3						
Gate	Count	% Parent	% Grand Parent	% Total	Count/uL	Mean GFP-Intensity
All Events	10,000	100.00	100.00	100.00	642.67	386,222
Cells	6,524	65.24	65.24	65.24	419.28	256,679
GFP+ Cells	2,237	34.29	22.37	22.37	143.77	729,412

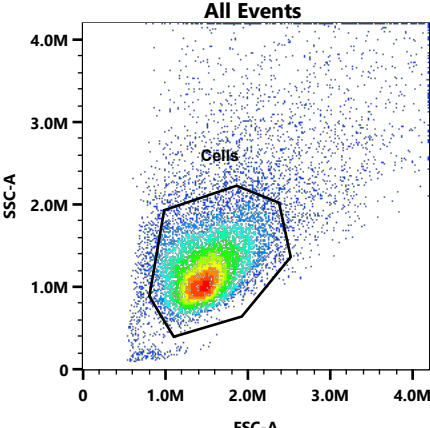


20241002-GSIN-Unmixed-TubeRack_001-GSIN-B1 Unstained-2			
Population		% Parent	Count
▼	<div><div></div><div>All Events</div></div>	100.00	10,000
▼	<div><div></div><div>Cells</div></div>	71.00	7,100
	<div><div></div><div>GFP+ Cells</div></div>	0.00	0

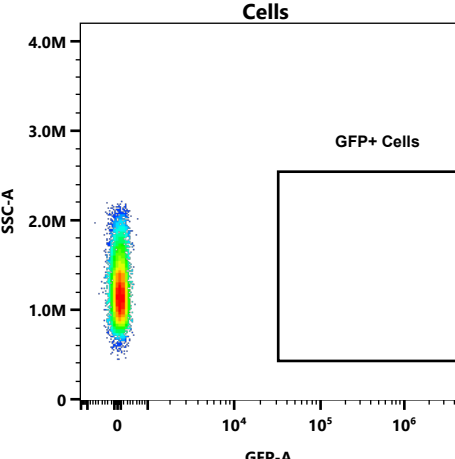


Statistics Table 1						
20241002-GSIN-Unmixed-TubeRack_001-GSIN-B1 Unstained-2						
Gate	Count	% Parent	% Grand Parent	% Total	Count/uL	Mean GFP-
All Events	10,000	100.00	100.00	100.00	353.61	14
Cells	7,100	71.00	71.00	71.00	251.06	11
GFP+ Cells	0	0.00	0.00	0.00	0.00	N/A

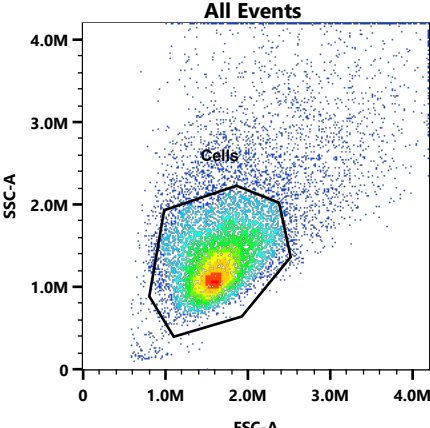




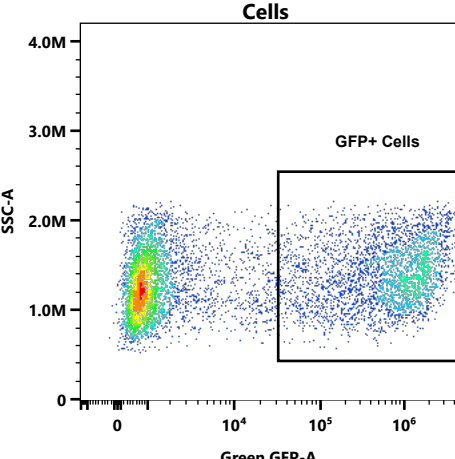
Population	% Parent	Count
<div> <div></div> <div>All Events</div> </div>	100.00	10,000
<div> <div></div> <div>Cells</div> </div>	69.89	6,989
<div> <div></div> <div>GFP+ Cells</div> </div>	0.00	0



Statistics Table 1						
20241002-GSIN-Unmixed-TubeRack_001-Reference Group-A1 Unstained (Cells)						
Gate	Count	% Parent	% Grand Parent	% Total	Count/uL	Mean GFP-
All Events	10,000	100.00	100.00	100.00	93.27	2
Cells	6,989	69.89	69.89	69.89	65.19	-1
GFP+ Cells	0	0.00	0.00	0.00	0.00	N/A



20241002-GSIN-Unmixed-TubeRack_001-Reference Group-A2 Green...			
Population		% Parent	Count
▼	<div><div></div><div>All Events</div></div>	100.00	10,000
▼	<div><div></div><div>Cells</div></div>	68.53	6,853
	<div><div></div><div>GFP+ Cells</div></div>	47.03	3,223



Statistics Table 1						
20241002-GSIN-Unmixed-TubeRack_001-Reference Group-A2 Green GFP (Cells)						
Gate	Count	% Parent	% Grand Parent	% Total	Count/uL	Mean Green
All Events	10,000	100.00	100.00	100.00	604.23	622,610
Cells	6,853	68.53	68.53	68.53	414.08	431,561
GFP+ Cells	3,223	47.03	32.23	32.23	194.74	888,548