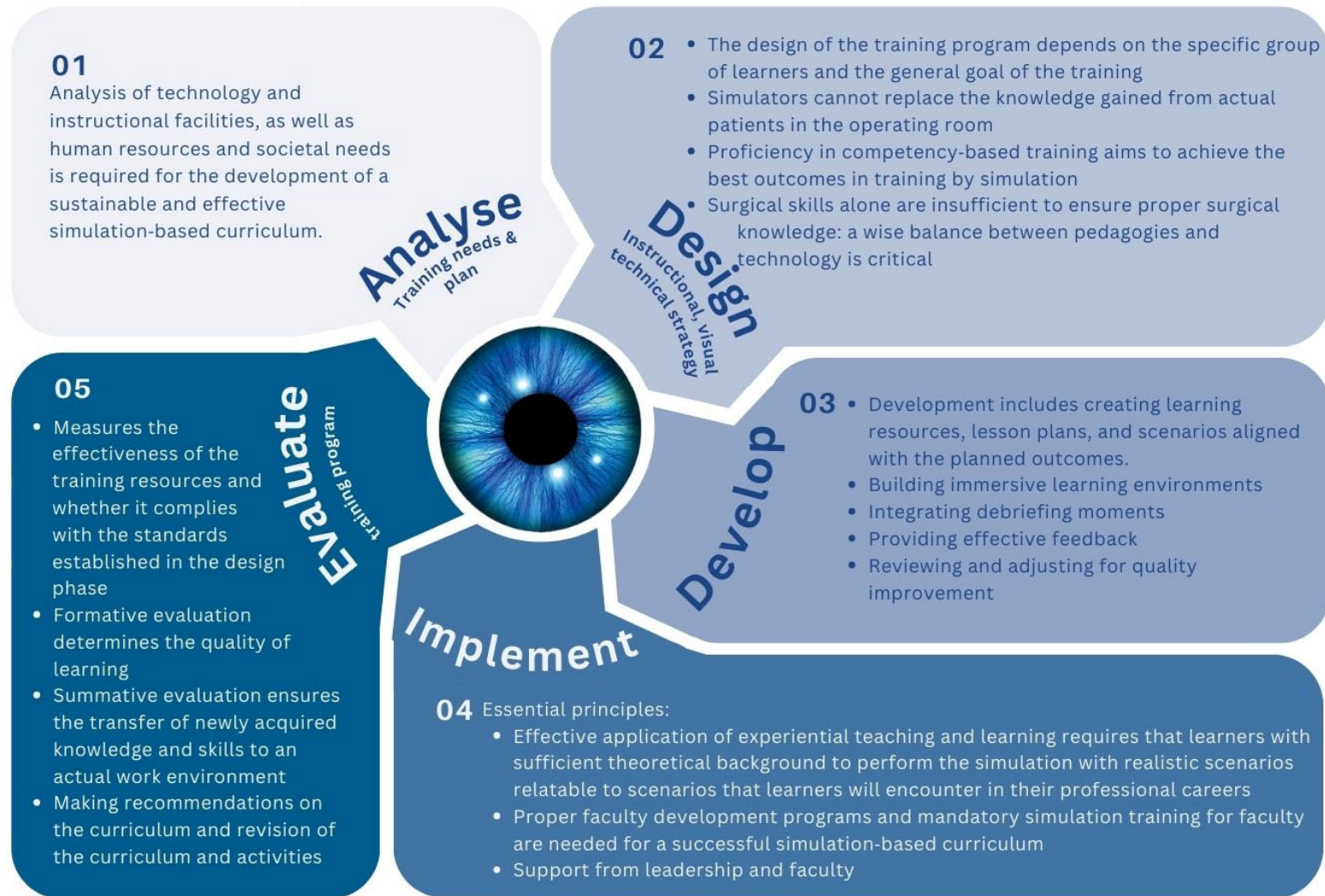


Curriculum development for simulation-based education in ophthalmology

Simulation-based education (SBE) follows a stepwise approach, starting with basic skills training, moving on to procedural training, and culminating in team training in an authentic environment.

ADDIE is the acronym for analyzing, designing, developing, implementing, and evaluating. This stepwise iterative model, dictated by learning outcomes, enacts a systematic instruction design after identifying knowledge and performance gaps.



Labuschagne, Mathys; Thomsen, Ann Sofia Skou; Lansingh, Van; Grau, Arturo; Clements, John; Luciano, Andreas Di; Musa, Pablo; Ng, Danny Siu-Chun; Filipe, Helena Prior. Good practices in simulation-based education in ophthalmology. A thematic series. An initiative of the Simulation Subcommittee of the Ophthalmology Foundation Part III: Curriculum development for simulation-based education in ophthalmology training programs. The Pan-American Journal of Ophthalmology 5(1):39, October 2023. | DOI: 10.4103/pajo.pajo_76_23 Acknowledgement for graphic: I du Preez