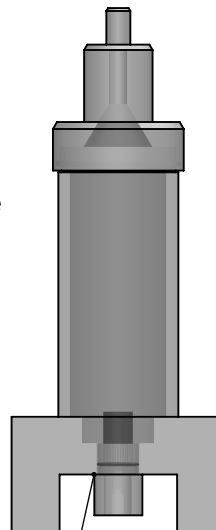


Cap O-Ring sealed to base  
(Slip Fit)



Aerator O-Ring sealed to base  
with vacuum grease (Slip Fit)

## Heater Cooler RST

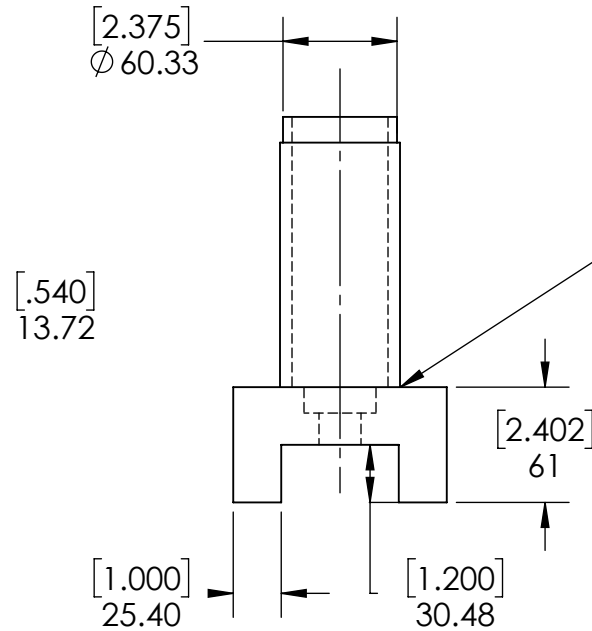
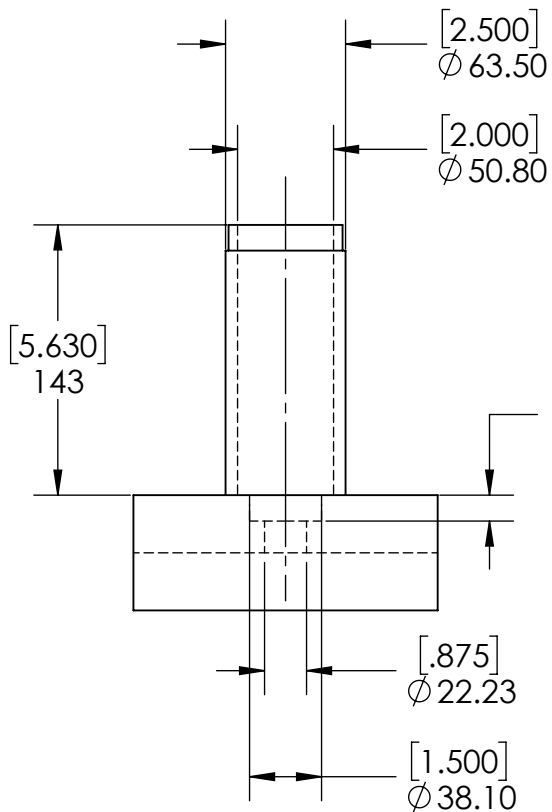
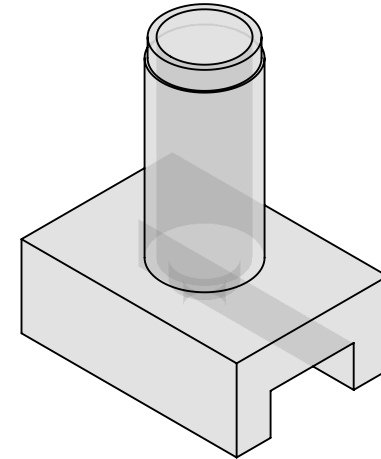
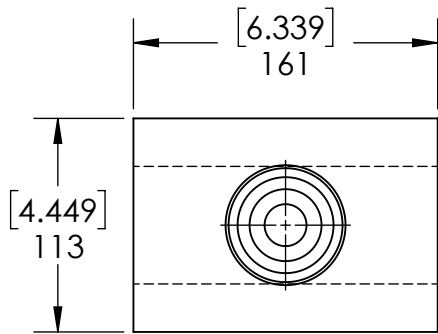
TITLE:

# Assembly

**All Main Units are in Millimeters  
Dual Dimention Units are in Inches**

SCALE: 1:4

SHEET 1 OF 6



Clear tube stock expoxied to square base

**NOTE:** Square base dimensions are not critical and meant to provide clearance for the aerator and tubing for it

## Heater Cooler RST

TITLE:

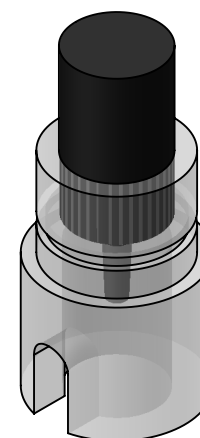
Base

**All Main Units are in Millimeters  
Dual Dimention Units are in Inches**

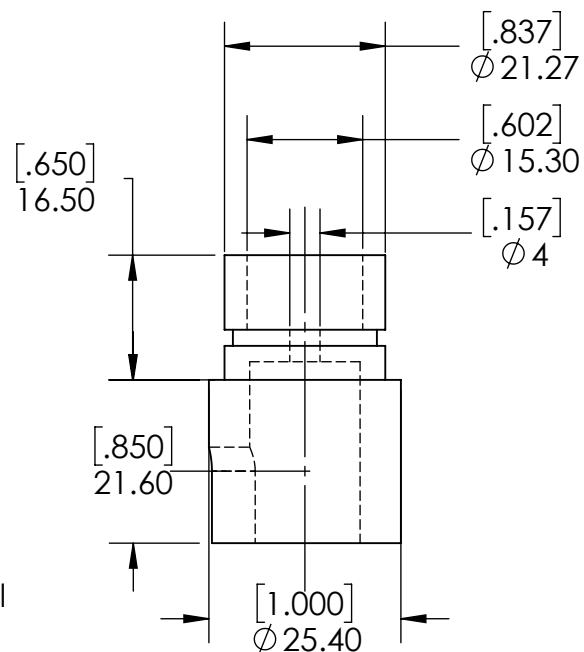
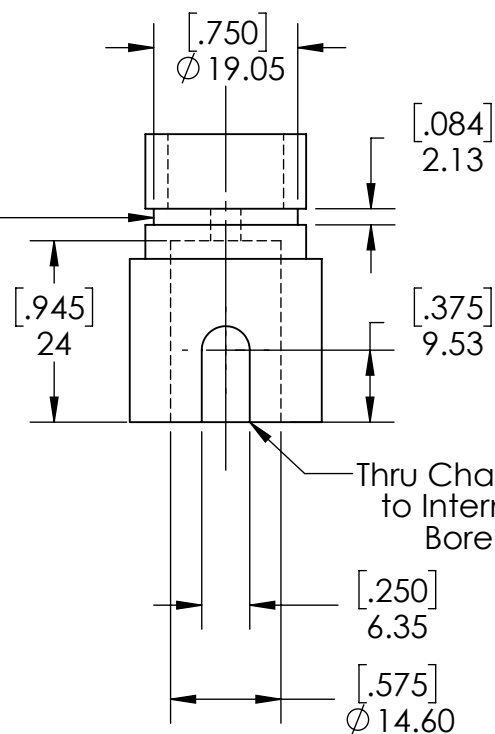
SCALE: 1:4

SHEET 2 OF 6

Aerator with  
standard bubbler  
expoixed in



Channel for  
018 O-Ring



**NOTE:** Internal bore dimensions can be varied to  
adapt to a specific bubbler

## Heater Cooler RST

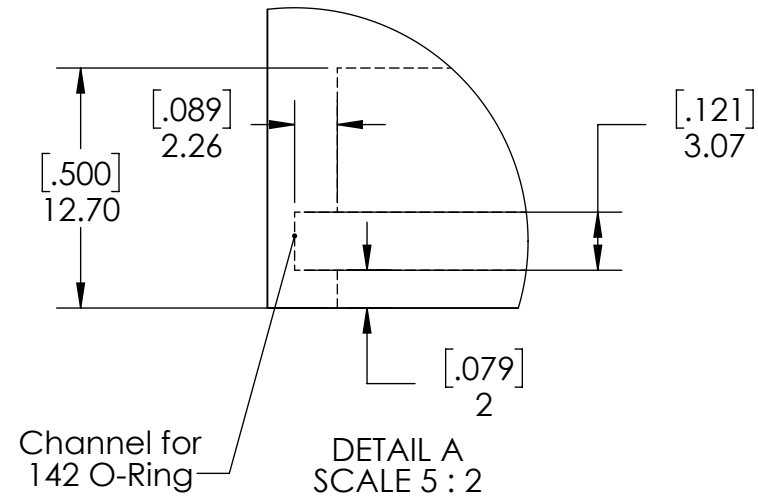
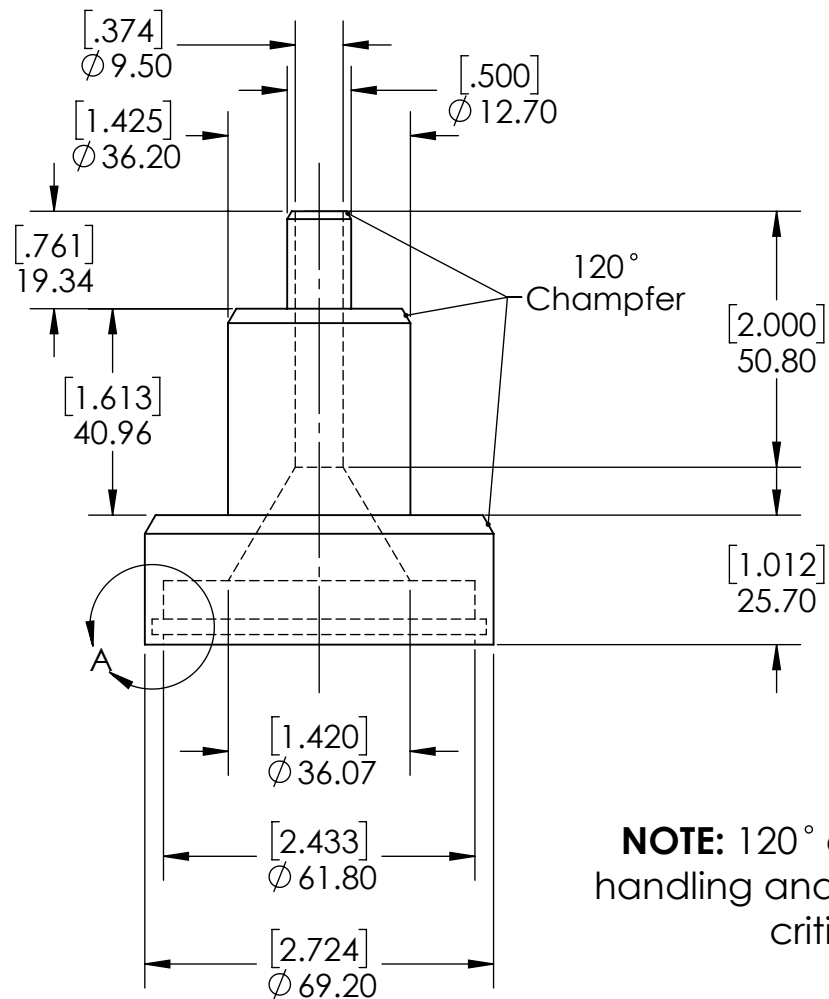
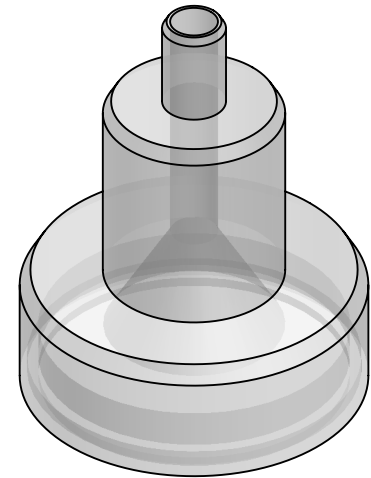
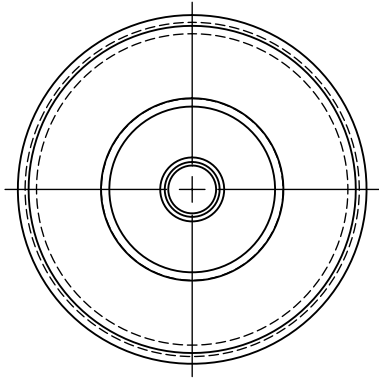
TITLE:

Aerator

**All Main Units are in Millimeters  
Dual Dimention Units are in Inches**

SCALE: 1:1

SHEET 3 OF 6



**NOTE:** 120° chamfers are for safer handling and cosmetics. They are not critical dimensions

## Heater Cooler RST

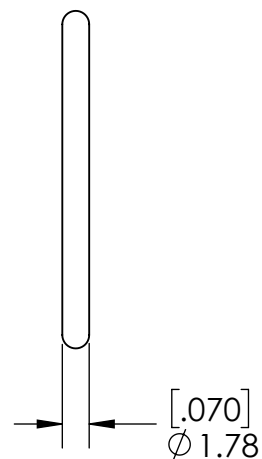
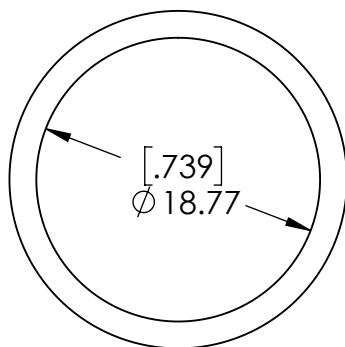
TITLE:

Cap

**All Main Units are in Millimeters  
Dual Dimention Units are in Inches**

SCALE: 2:3

SHEET 4 OF 6



**O-Ring Dash Number: 018**

**Heater Cooler RST**

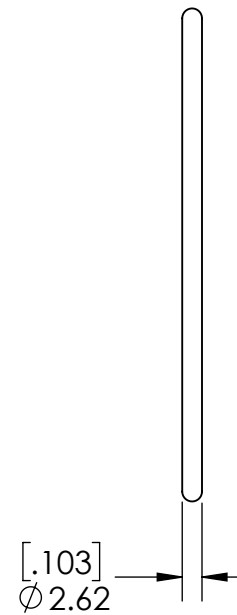
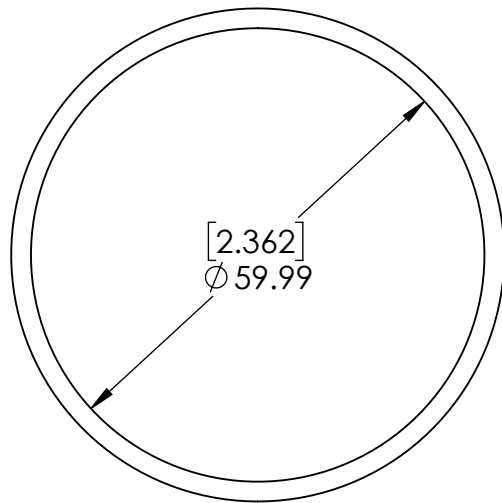
TITLE:

**018 O-Ring**

**All Main Units are in Millimeters  
Dual Dimention Units are in Inches**

SCALE: 2:1

SHEET 5 OF 6



**O-Ring Dash Number: 142**

**Heater Cooler RST**

TITLE:

**142 O-Ring**

**All Main Units are in Millimeters  
Dual Dimention Units are in Inches**

SCALE: 1:1

SHEET 6 OF 6