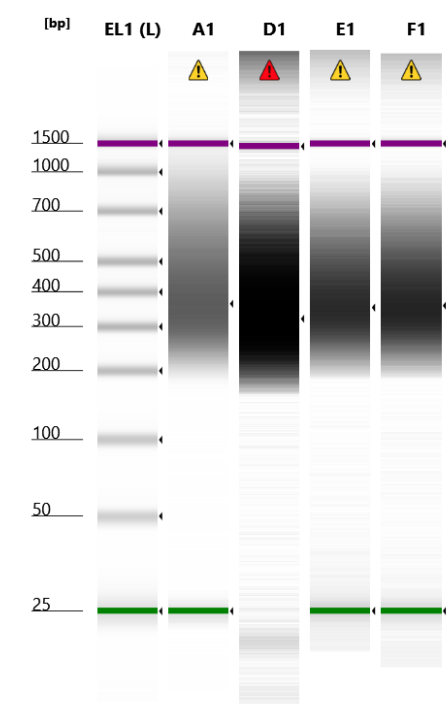


Filename: 2023-12-08 - 11.25.41.HSD1000



Default image (Contrast 100%)

Sample Info




Well	Conc. [pg/ul]	Sample Description	Alert	Observations
EL1	2350	Electronic Ladder		Ladder
A1	4870	Pooled library		Caution! Expired ScreenTape device; Sample concentration outside recommended range
D1	3540	Unpooled library A		Marker(s) not detected; Caution! Expired ScreenTape device; Sample concentration outside recommended range
E1	1070	Unpooled library B		Caution! Expired ScreenTape device; Sample concentration outside recommended range
F1	9900	Unpooled library C		Caution! Expired ScreenTape device; Sample concentration outside recommended range

Compact Peak Table

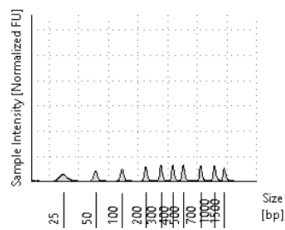
Well	Sample Description	Size [bp]	Calibrated Conc. [pg/ul]	Assigned Conc. [pg/ul]	Peak Molarity [pmol/l]	% Integrated Area	Peak Comment	Observations
EL1	Electronic Ladder	25	340	-	20900	-		Lower Marker
EL1	Electronic Ladder	50	265	-	8160	11.28		
EL1	Electronic Ladder	100	278	-	4270	11.82		
EL1	Electronic Ladder	200	290	-	2230	12.32		
EL1	Electronic Ladder	300	304	-	1560	12.95		
EL1	Electronic Ladder	400	306	-	1180	13.00		
EL1	Electronic Ladder	500	312	-	961	13.29		
EL1	Electronic Ladder	700	286	-	629	12.19		
EL1	Electronic Ladder	1000	309	-	476	13.15		
EL1	Electronic Ladder	1500	250	250	256	-		Upper Marker
A1	Pooled library	25	256	-	15800	-		Lower Marker
A1	Pooled library	366	4870	-	20400	100.00		
A1	Pooled library	1500	250	250	256	-		Upper Marker
D1	Unpooled library A	-	3540	-	-	100.00		
D1	Unpooled library A	-	250	250	-	-		Upper Marker
E1	Unpooled library B	25	572	-	35200	-		Lower Marker

E1	Unpooled library B	355	1070	-	4630	100.00		
E1	Unpooled library B	1500	250	250	256	-		Upper Marker
F1	Unpooled library C	25	145	-	8930	-		Lower Marker
F1	Unpooled library C	361	9900	-	42200	100.00		
F1	Unpooled library C	1500	250	250	256	-		Upper Marker

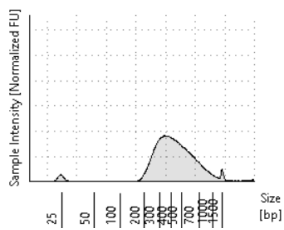
Compact Region Table

WellId	Sample Description	From [bp]	To [bp]	Average Size [bp]	Conc. [pg/μl]	Region Molarity [pmol/l]	% of Total	Region Comment	Color
A1	Pooled library	200	1000	454	12300	47500	97.40		
E1	Unpooled library B	200	1000	425	23600	95700	93.41		
F1	Unpooled library C	200	1000	426	24100	97100	92.49		

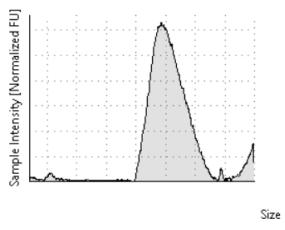
EL1: Electronic Ladder



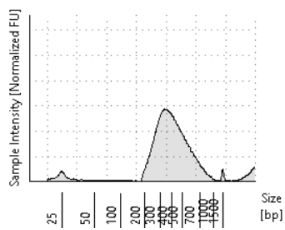
A1: Pooled library



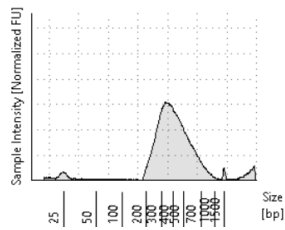
D1: Unpooled library A



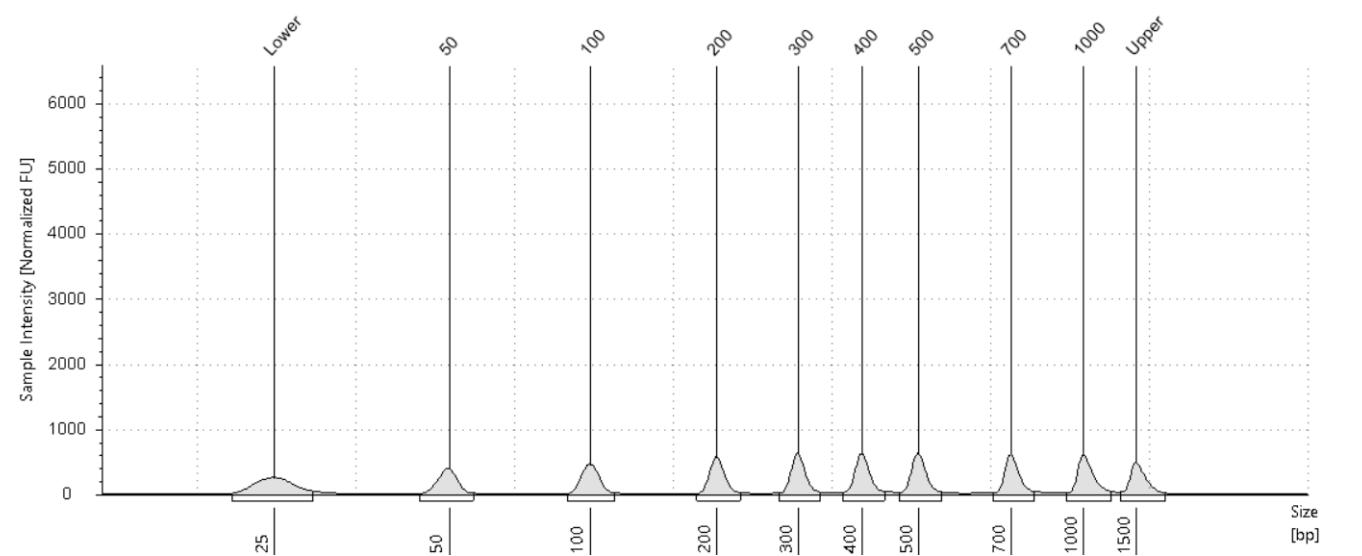
E1: Unpooled library B



F1: Unpooled library C



EL1: Electronic Ladder



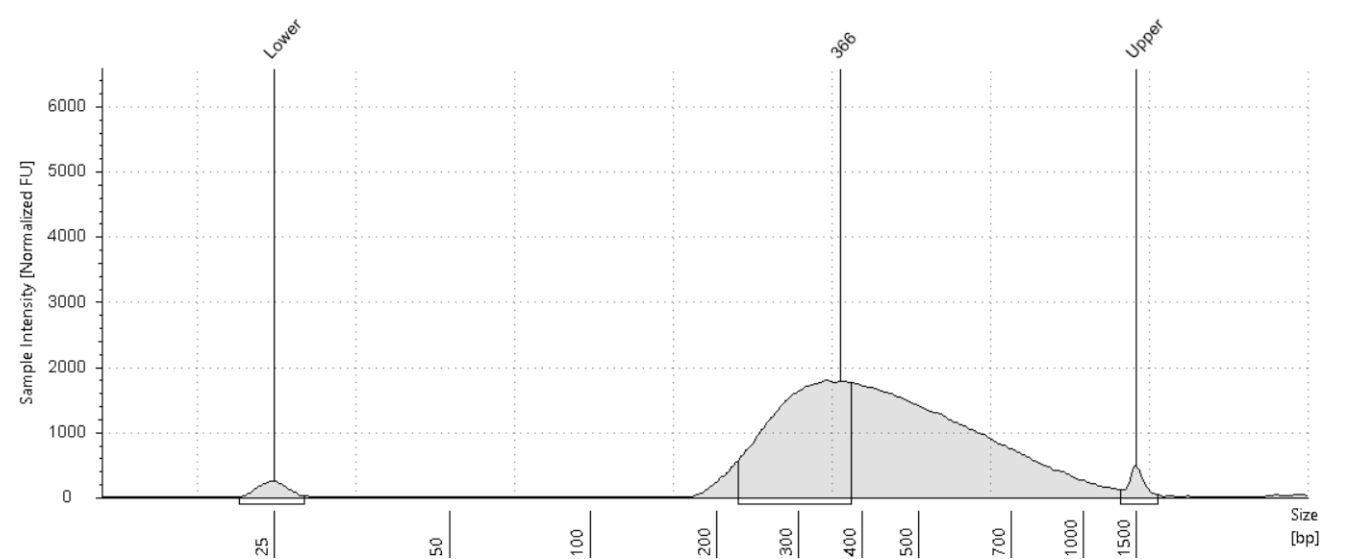
Sample Table

Well	Conc. [pg/ul]	Sample Description	Alert	Observations
EL1	2350	Electronic Ladder		Ladder

Peak Table

Size [bp]	Calibrated Conc. [pg/ul]	Assigned Conc. [pg/ul]	Peak Molarity [pmol/l]	% Integrated Area	Peak Comment	Observations
25	340	-	20900	-		Lower Marker
50	265	-	8160	11.28		
100	278	-	4270	11.82		
200	290	-	2230	12.32		
300	304	-	1560	12.95		
400	306	-	1180	13.00		
500	312	-	961	13.29		
700	286	-	629	12.19		
1000	309	-	476	13.15		
1500	250	250	256	-		Upper Marker

A1: Pooled library

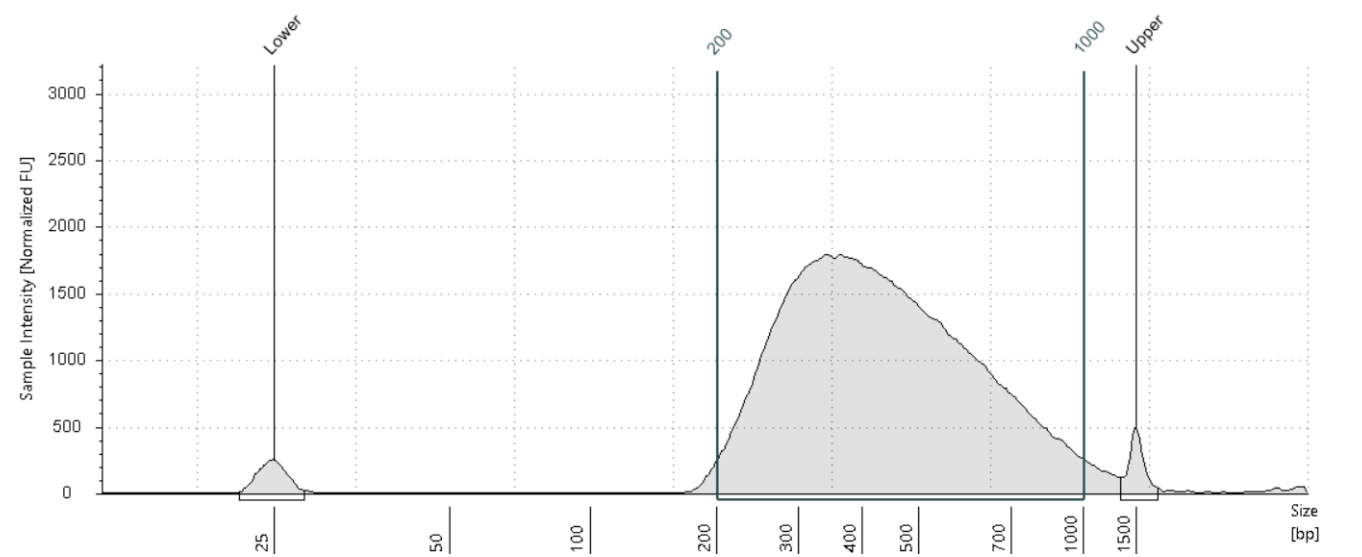


Sample Table

Well	Conc. [pg/ul]	Sample Description	Alert	Observations
A1	4870	Pooled library		Caution! Expired ScreenTape device; Sample concentration outside recommended range

Peak Table

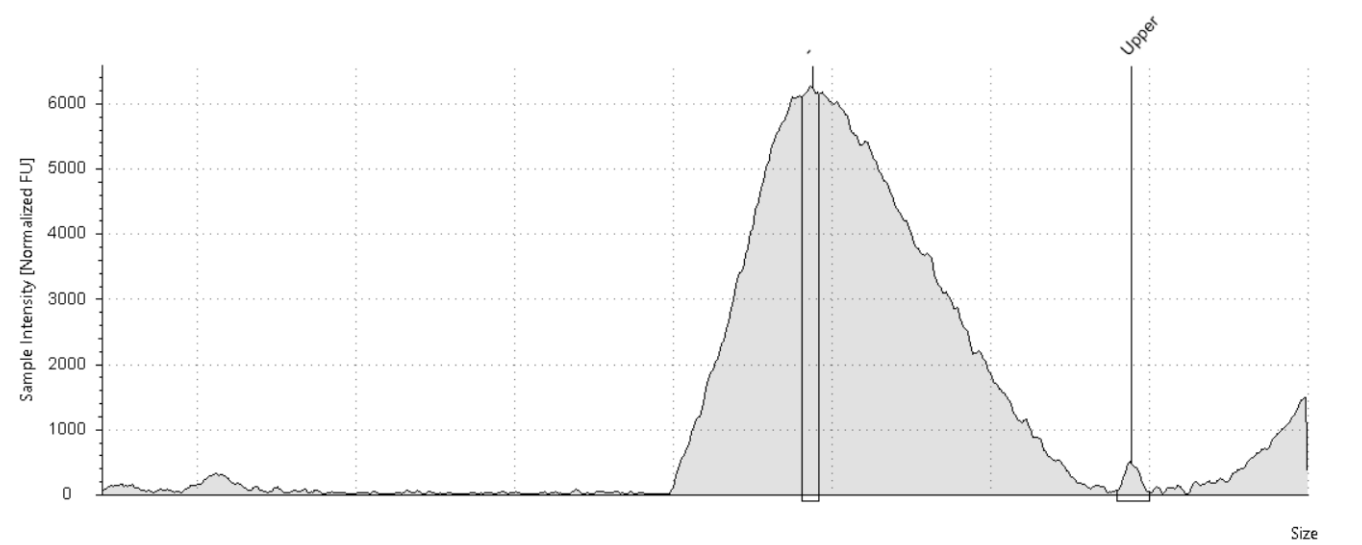
Size [bp]	Calibrated Conc. [pg/ul]	Assigned Conc. [pg/ul]	Peak Molarity [pmol/l]	% Integrated Area	Peak Comment	Observations
25	256	-	15800	-		Lower Marker
366	4870	-	20400	100.00		
1500	250	250	256	-		Upper Marker



Region Table

From [bp]	To [bp]	Average Size [bp]	Conc. [pg/ul]	Region Molarity [pmol/l]	% of Total	Region Comment	Color
200	1000	454	12300	47500	97.40		

D1: Unpooled library A



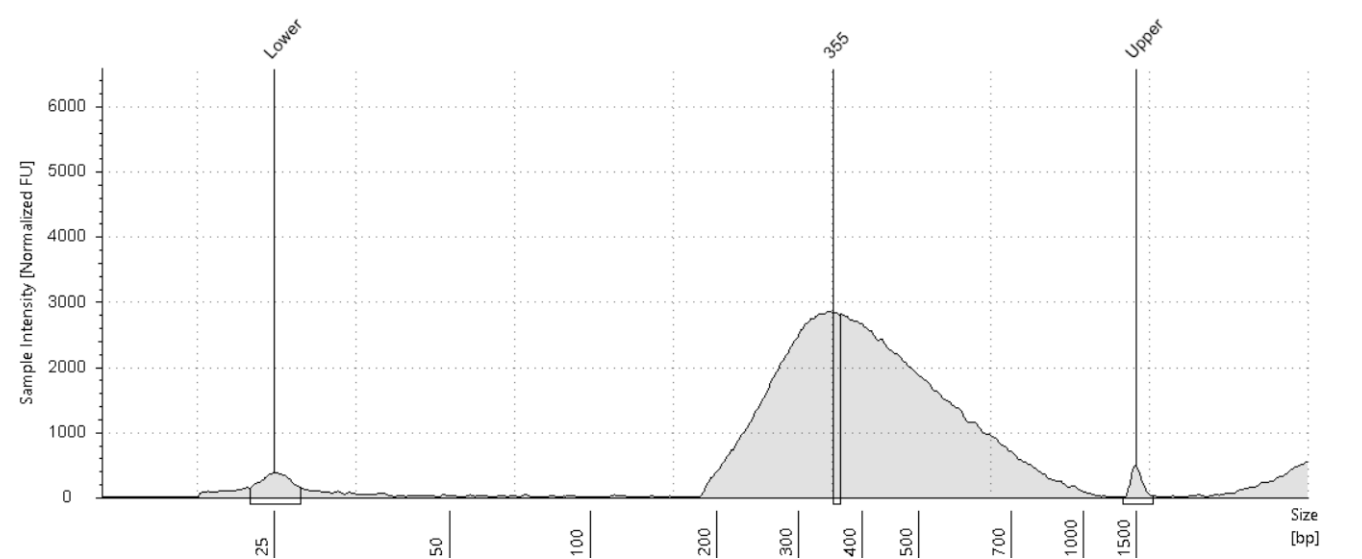
Sample Table

Well	Conc. [pg/ul]	Sample Description	Alert	Observations
D1	3540	Unpooled library A		Marker(s) not detected; Caution! Expired ScreenTape device; Sample concentration outside recommended range

Peak Table

Size [bp]	Calibrated Conc. [pg/ul]	Assigned Conc. [pg/ul]	Peak Molarity [pmol/l]	% Integrated Area	Peak Comment	Observations
-	3540	-	-	100.00		
-	250	250	-	-		Upper Marker

E1: Unpooled library B

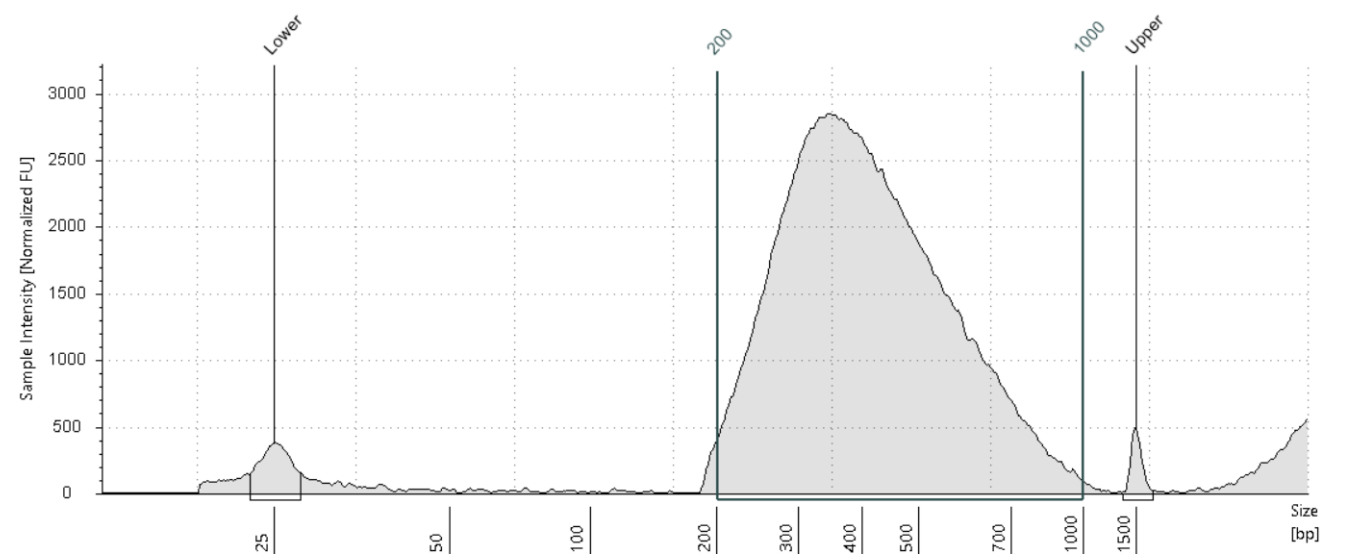


Sample Table

Well	Conc. [pg/ul]	Sample Description	Alert	Observations
E1	1070	Unpooled library B		Caution! Expired ScreenTape device; Sample concentration outside recommended range

Peak Table

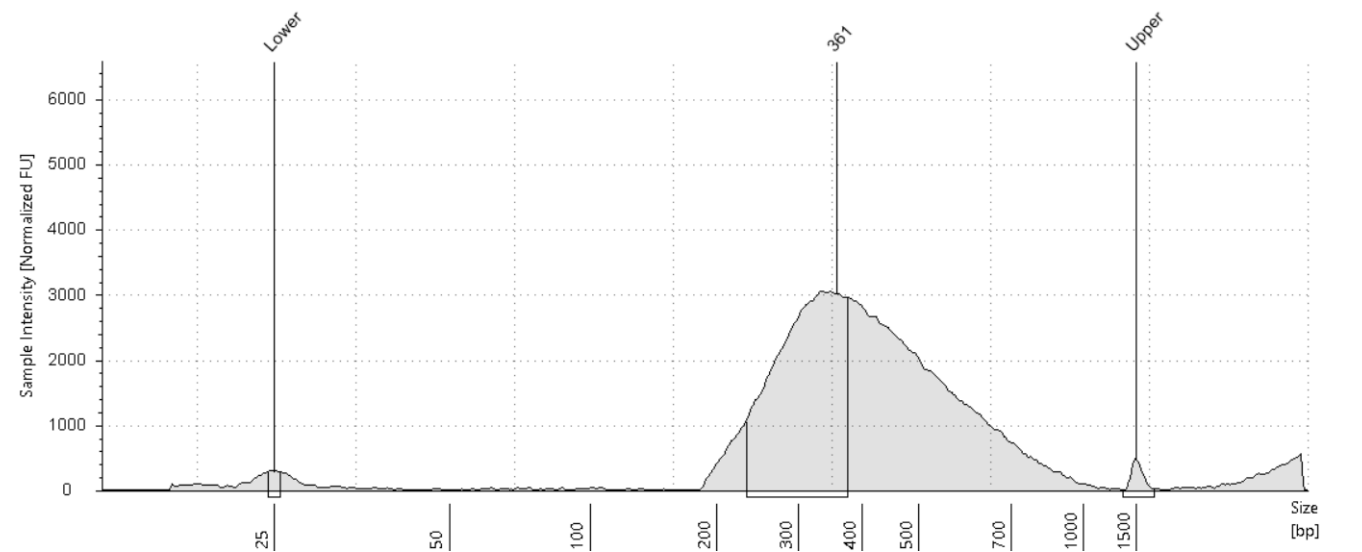
Size [bp]	Calibrated Conc. [pg/ul]	Assigned Conc. [pg/ul]	Peak Molarity [pmol/l]	% Integrated Area	Peak Comment	Observations
25	572	-	35200	-		Lower Marker
355	1070	-	4630	100.00		
1500	250	250	256	-		Upper Marker



Region Table

From [bp]	To [bp]	Average Size [bp]	Conc. [pg/ul]	Region Molarity [pmol/l]	% of Total	Region Comment	Color
200	1000	425	23600	95700	93.41		

F1: Unpooled library C

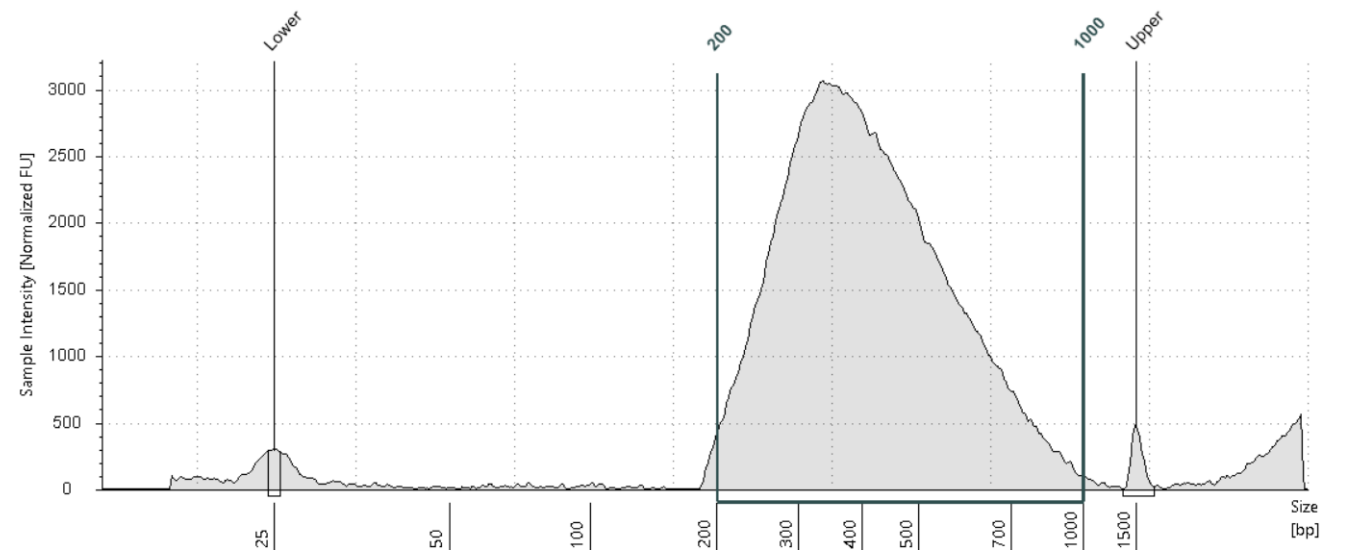


Sample Table

Well	Conc. [pg/ul]	Sample Description	Alert	Observations
F1	9900	Unpooled library C		Caution! Expired ScreenTape device; Sample concentration outside recommended range

Peak Table

Size [bp]	Calibrated Conc. [pg/ul]	Assigned Conc. [pg/ul]	Peak Molarity [pmol/l]	% Integrated Area	Peak Comment	Observations
25	145	-	8930	-		Lower Marker
361	9900	-	42200	100.00		
1500	250	250	256	-		Upper Marker



Region Table

From [bp]	To [bp]	Average Size [bp]	Conc. [pg/ul]	Region Molarity [pmol/l]	% of Total	Region Comment	Color
200	1000	426	24100	97100	92.49		



## Calibration

### Concentration Settings

Calibration mode: Upper Marker  
Normalise peaks from: Upper Marker  
Fitting type: Linear Regression

## Experiment Properties

### *Run Properties*

Analysis Software Version	5.1.0.47235
Filename	C:\Users\UCT\Documents\Agilent\TapeStation Data\Forensics\Adele\2023-12-08 - 11.25.41.HSD1000
Assay	D1000 High Sensitivity
Run End Date	2023-12-08T11:33:01+02:00
Last Saved Under Version	5.1.0.47235
Study	
Comments	

### *ScreenTape Device 1*

Username	UCT
ScreenTape Device ID	01-S030-220118-01-000670
Expiry Date	2022-08-03T23:59:59
ScreenTape Device History	First run 20 Jul 2022, 2 run(s) performed
Temperature [°C]	20.2
Electrophoresis Time [s]	183
Instrument Type	4200 TapeStation (G2991A)
Instrument Serial Number	DEDA01874
Notes	
ScreenTape Device Run Date	2023-12-08T11:25:41+02:00
Reagent Lot #	0006610142
ScreenTape Lot #	0202394-8

### *Controller Environment*

Computer	DESKTOP-UC33E4D
Instrument Controller Software Version	5.1.0.47235
First Run Analysis Version	5.1.0.47235
Operating System	Microsoft Windows 11 Pro