

Morphological and genetic diversification of pygmy and marbled newts, with the description of a new species from the wider Lisbon Peninsula (*Triturus*, Salamandridae)

Jan W. Arntzen | ORCID: 0000-0003-3229-5993

Institute of Biology, Leiden University, 2333 BE Leiden, The Netherlands

Naturalis Biodiversity Center, 2333 CR Leiden, The Netherlands

pim.arntzen@gmail.com

Supplementary material

TABLE S1 Tests for genetic differentiation of transect populations of *Triturus rudolfi* **sp. nov.** and *T. pygmaeus* over 54 SNP-markers, with GenePop software (Rousset, 2008).

Genetically differentiated are:

at $P < 0.05$ – anapc4, fam207a, fancm, mag, mindy3, poldip2 and ski,

at $P < 0.01$ – elovl7 and exon02,

at $P < 0.001$ – ampd2, aspn and stox,

at $P < 0.0001$ – BF, cep290, cxcl14, dph3, exon2, gnngt1, htt, hunk, jam2, kdm8, kiaa1211, mrpl41, ndufab1, PDG, plekha6, ptpcr, rhbdf2, scn4b, slc7a1, sostdc1, tomm22 and ythdc1,

whereas not significantly differentiated are - arhgef5, at11, bbs9, bptf, commd1, csflr, dach1, exon14, exon19, fen1, frs3, hnf1b, lrcc18, nrg3, pxylp1, rarb, rifl, sec61g, zfp3612 and zfx.

Fourteen underlined markers were used in a post-hoc analysis of five populations along the lower Tejo River (details see text).

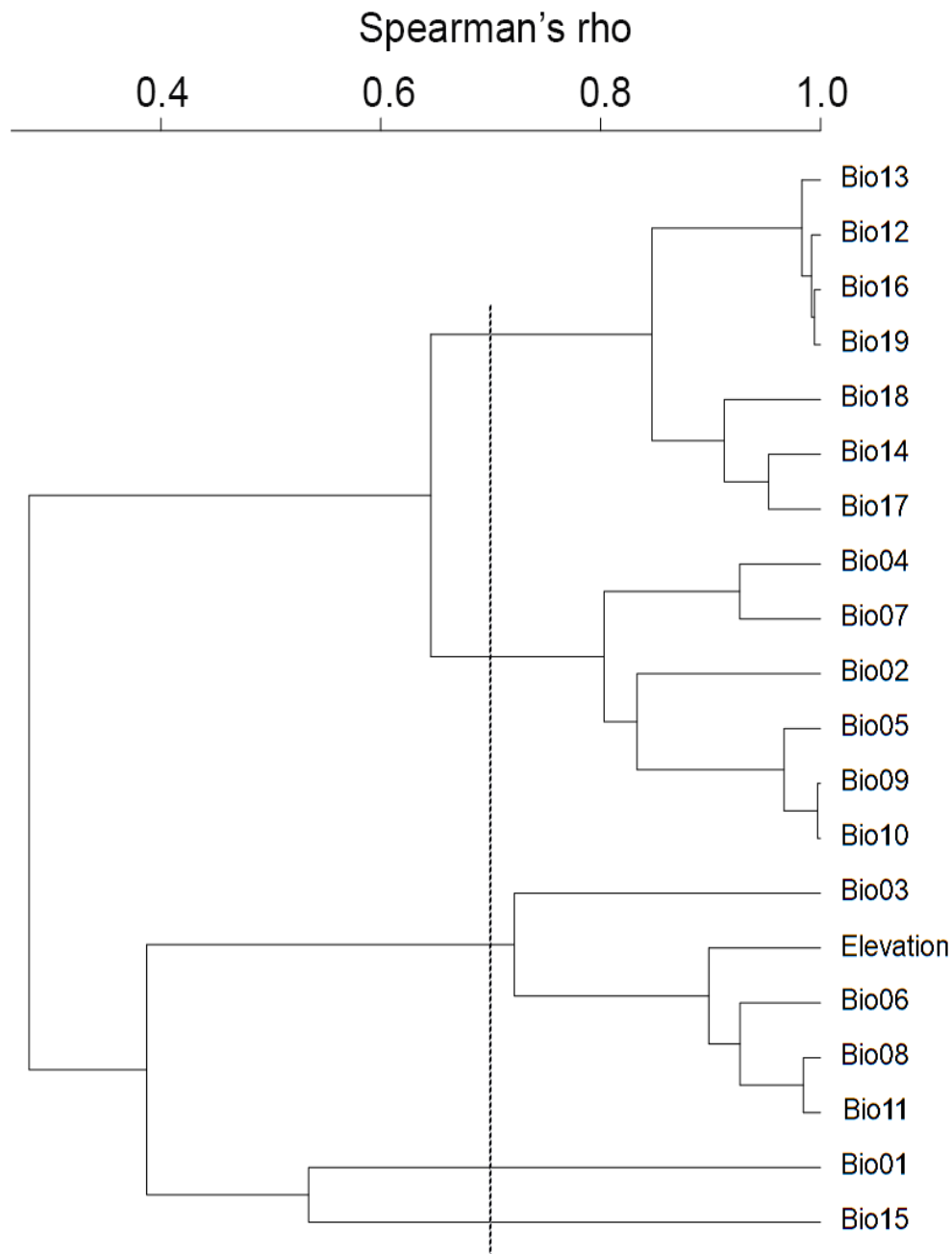


FIGURE S1 Parameter selection for the study of ecological differentiation in *Triturus marmoratus*, *T. pygmaeus* and *T. rudolfi* **sp. nov.** Environmental data were extracted for 246 marbled newt populations from the Iberian Peninsula for which taxonomic identity is known from genetic data (present paper). Data were normalized and subjected to UPGMA clustering with Primer7 software (Clarke & Gorley, 2015) based on Spearman's correlation coefficient $|\rho| < 0.7$. Parameter selection was in alphanumeric order so that bio01, bio02, bio03,

bio12 and bio15 were considered for further analysis. The codes are: bio01 = annual mean temperature, bio02 = mean diurnal range (mean of monthly (max temp - min temp)), bio3 = isothermality (bio02/bio07) ($\times 100$), bio12 = annual precipitation and bio15 = precipitation seasonality (coefficient of variation).

TABLE S2 Geographical clines for within '*Triturus pygmaeus*' along the northern edge of the range, with cline model parameters for best models as found by the program HZAR (Derryberry et al., 2014).

95% Credibility interval			
Second PCA axis			
Selected model	OptN		
Centre	0.268	-0.999	7.452
Width	35.229	20.380	58.383
P _{min}	-3.065		
P _{max}	0.536		

Frequency of the 'eastern' mitochondrial DNA haplotype

Selected model	TypN		
Centre	15.174	12.938	16.071
Width	0.434	0.048	8.659
P _{min}	0		
P _{max}	1		

Average number of links

Selected model	TypM		
Centre	-2.773	-15.475	17.975
Width	208.854	20.370	424.960
DeltaM	35.478		
TauM	0.092		

P_{\min}	0
P_{\max}	13

Snout-vent length, males

Selected model	Opt		
Centre	65.715	25.503	82.780
Width	56.423	1.950	178.528
P_{\min}	48.7		
P_{\max}	54.1		

Snout-vent length, females

Selected model	Opt		
Centre	65.923	22.901	89.145
Width	98.790	47.668	246.181
P_{\min}	51.3		
P_{\max}	61.5		

N o r t h e r n l a t i t u d e

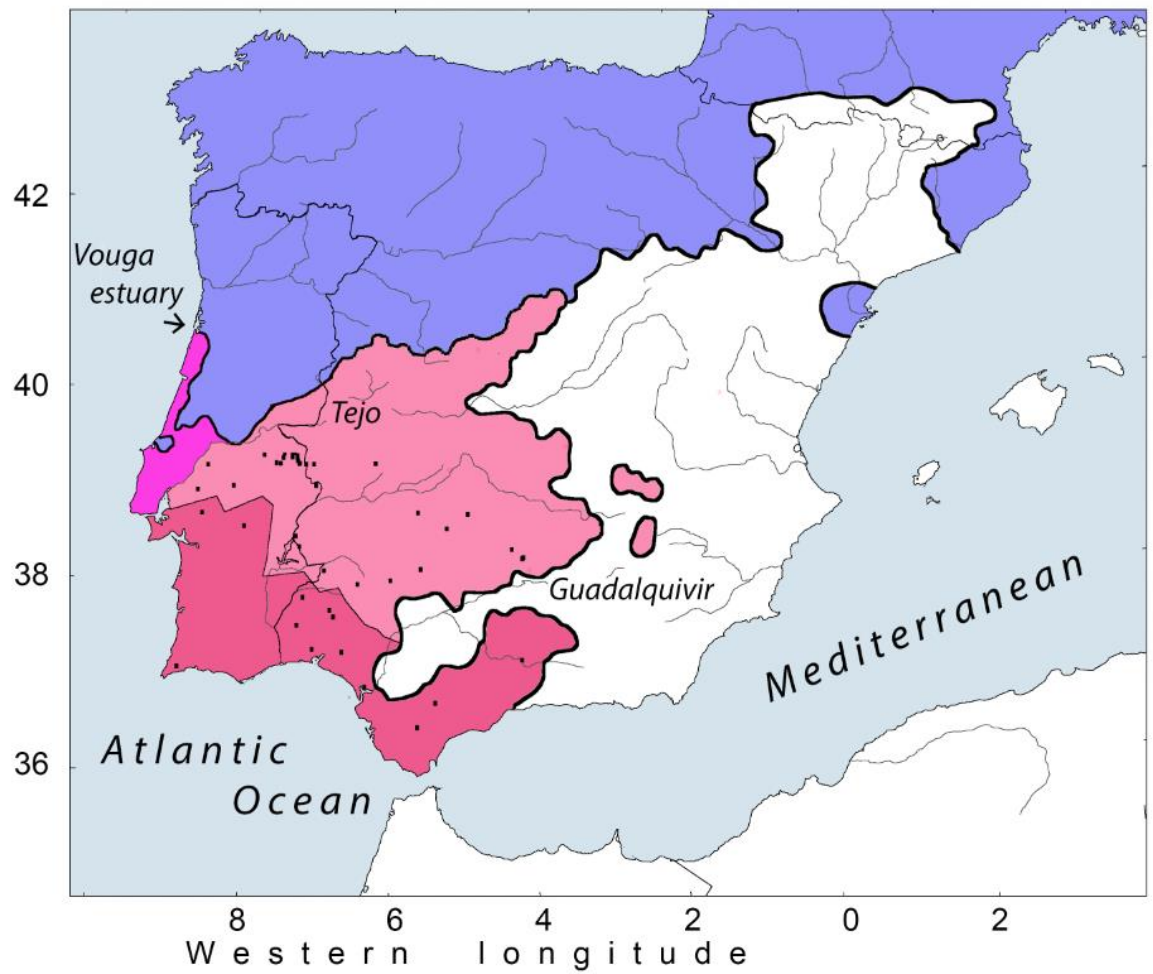


FIGURE S2 The Iberian Peninsula with the approximate distributions of *Triturus marmoratus* in blue, *T. rudolfi* **sp. nov.** in purple and *T. pygmaeus* in light and dark red. The latter colours represent the dominance of the eastern versus the southwestern mitochondrial DNA haplotype, in populations with $N \geq 5$. Studied *T. pygmaeus* populations south of the transect are shown by black symbols.

TABLE S3 Morphometric data obtained for three Iberian *Triturus* species. For the description of characters see main text. For locality information see Arntzen (2024).

Locality	Sex	Character							
number		SVl1	ILd	FLI	TFI	HLI	FTI	Hw	HI
<i>Triturus marmoratus</i>									
6	Male	51	31	19.5	5.3	21.8	6.8	11.1	17.8
7	Male	63	34	28.6	9.0	28.0	9.5	12.2	19.0
7	Male	65	40	27.0	10.0	28.0	10.7	13.0	18.3
7	Male	63	35	27.9	9.0	27.7	11.4	13.0	19.4
7	Male	58	32	25.5	8.3	25.5	8.5	12.6	17.6
7	Male	65	33	29.0	10.3	28.9	9.0	12.6	16.6
7	Male	65	35	26.4	7.1	28.0	8.4	13.2	17.0
7	Male	62	33	25.2	8.8	27.5	9.0	13.4	16.5
7	Male	63	33	25.4	7.7	27.0	8.7	11.9	17.5
7	Male	57	31	24.3	8.6	24.2	8.2	12.2	16.5
7	Male	58	29	24.4	8.0	23.4	6.5	13.2	17.8
7	Male	62	30	29.4	10.0	28.5	10.7	14.2	18.9
7	Male	62	33	25.7	7.5	26.8	8.7	13.0	18.3
7	Male	66	34	28.2	9.5	28.7	9.8	14.2	21.2
7	Male	58	31	22.6	7.1	24.7	7.6	11.9	17.1
7	Male	61	29	27.0	9.8	26.8	7.0	12.0	17.7
7	Male	69	34	27.8	7.1	26.7	8.4	13.6	20.2
7	Male	60	34	26.6	9.4	24.8	9.3	12.1	17.4

7	Male	60	29	25.7	8.3	27.9	8.2	13.4	18.6
7	Male	66	31	29.2	9.0	28.5	7.8	12.1	17.9
7	Male	62	31	24.5	7.1	25.0	8.2	12.4	19.6
7	Male	59	32	24.9	7.9	26.0	8.3	12.4	18.1
7	Male	58	31	24.1	9.7	24.6	9.7	12.4	18.1
7	Female	60	32	23.6	5.8	22.8	6.3	12.5	16.7
7	Female	69	39	26.2	9.3	24.0	8.5	12.8	19.0
7	Female	59	36	22.7	7.0	23.2	7.2	12.0	18.2
7	Female	54	35	23.5	7.5	22.4	6.3	12.9	17.9
7	Female	69	43	25.6	6.6	25.7	6.5	14.4	17.1
7	Female	52	28	21.5	4.7	19.6	6.4	11.1	16.0
7	Female	61	36	24.2	5.5	24.5	6.6	12.1	18.2
7	Female	63	38	24.5	6.9	22.5	5.7	13.0	16.4
7	Female	66	35	25.2	6.6	24.8	5.7	13.3	19.0
7	Female	66	32	25.0	7.3	26.0	6.4	14.2	18.0
7	Female	69	36	24.0	7.5	23.3	5.7	12.8	17.4
7	Female	63	37	22.2	5.8	22.3	5.4	11.3	17.5
7	Female	71	36	26.0	7.0	25.0	5.7	14.8	19.2
7	Female	64	33	25.3	6.0	24.2	6.3	12.8	17.8
7	Female	65	37	23.8	7.8	25.0	5.8	12.7	16.8
7	Female	58	29	22.9	5.2	22.6	6.0	11.9	16.5
7	Female	63	31	23.0	6.0	23.4	5.7	12.5	16.8
7	Female	65	35	24.3	7.2	24.4	7.1	12.3	18.0
7	Female	65	35	24.0	7.1	22.4	7.3	13.2	19.0
7	Female	65	34	24.4	6.7	24.7	6.1	14.0	18.8

7	Female	70	38	24.6	7.1	25.1	6.5	14.7	19.0
7	Female	64	35	23.4	6.0	22.6	6.4	12.0	17.3
7	Female	63	34	23.8	6.6	23.4	5.7	12.6	17.2
7	Female	62	35	23.5	7.4	23.0	7.7	12.3	19.0
7	Female	62	35	22.9	7.1	24.1	7.7	13.0	20.0
7	Female	64	35	25.8	7.4	21.7	6.5	12.4	18.2
7	Female	65	37	24.0	7.4	24.5	7.5	12.5	19.1
7	Female	73	35	25.3	8.0	27.2	8.2	15.5	20.6
7	Female	68	35	24.2	6.5	23.6	6.1	13.8	19.1
7	Female	62	34	22.7	6.0	22.4	5.5	12.6	18.1
7	Female	70	37	24.8	6.8	25.1	6.0	13.6	19.5
7	Female	72	42	25.4	7.1	24.2	6.3	15.1	21.4
7	Female	61	33	23.7	4.8	22.3	6.2	12.6	18.6
7	Female	65	38	25.0	6.7	26.9	6.0	14.5	21.3
9	Male	55	30	24.5	8.1	26.0	8.8	12.0	18.3
9	Male	61	34	27.1	9.0	25.0	10.0	13.0	20.0
9	Male	65	33	27.1	9.5	27.6	10.0	13.5	20.0
9	Male	61	32	26.7	8.6	27.0	9.7	13.0	18.6
9	Male	60	30	23.7	8.2	25.4	8.6	13.0	18.0
9	Male	65	35	27.4	9.8	27.7	10.5	14.1	19.2
9	Male	59	32	24.2	6.5	24.9	9.7	12.0	15.7
9	Male	63	36	25.9	9.2	30.1	8.5	14.4	19.0
9	Male	65	36	29.0	8.0	28.9	7.9	14.1	19.5
9	Male	58	27	26.0	6.9	24.1	8.1	11.8	17.5
9	Male	62	35	27.2	7.8	27.9	10.0	13.0	17.7

9	Male	62	33	26.1	8.8	27.1	9.2	13.0	17.5
9	Male	58	28	27.8	8.6	26.1	8.6	13.0	18.1
9	Male	60	30	24.4	9.2	28.0	10.5	13.1	17.2
9	Male	65	37	26.4	9.0	29.1	9.9	14.0	16.2
9	Female	75	39	27.3	8.1	26.4	9.0	15.0	21.0
9	Female	65	36	19.7	8.0	22.6	8.1	14.0	19.2
9	Female	62	41	24.1	8.8	24.0	8.9	13.9	18.6
9	Female	71	39	27.3	8.5	27.5	7.7	15.3	21.0
9	Female	64	37	23.5	6.0	22.9	6.7	13.6	16.4
9	Female	64	34	23.9	6.9	21.1	8.0	12.7	18.3
9	Female	68	37	25.6	7.1	25.8	5.7	14.1	19.1
11	Male	65	35	25.5	8.4	29.9	9.9	15.1	20.6
12	Male	62	35	26.5	8.4	25.6	8.5	13.7	19.0
12	Male	55	33	24.7	8.6	26.1	10.1	12.4	17.7
12	Male	59	32	26.1	8.6	25.6	9.0	14.1	19.2
12	Male	65	38	26.5	9.0	26.8	8.8	15.1	19.8
12	Male	59	34	25.3	7.6	26.2	8.5	13.1	17.4
12	Male	71	39	27.2	8.5	28.1	7.7	14.1	21.9
12	Male	62	37	26.4	8.4	28.4	8.2	14.0	20.4
12	Male	64	35	25.7	6.9	27.6	8.9	14.0	19.6
12	Male	69	36	29.0	10.0	31.2	11.0	14.9	23.4
12	Male	63	35	27.0	9.9	27.9	8.9	15.0	21.5
12	Male	64	36	28.3	9.5	28.9	9.6	14.3	21.0
12	Male	54	32	22.9	7.0	23.9	9.0	12.1	17.4
12	Male	66	36	28.2	9.6	30.0	11.2	15.1	19.4

12	Male	68	37	28.0	9.0	27.5	11.5	15.9	22.0
12	Male	64	33	29.2	9.1	29.3	10.9	15.1	21.9
12	Male	63	37	26.3	10.0	27.6	10.0	14.1	17.0
12	Male	65	35	30.0	9.1	29.9	10.4	13.1	19.8
12	Male	66	36	27.6	9.7	28.2	10.3	13.6	19.5
12	Male	65	36	28.5	9.1	27.1	10.5	13.8	18.7
12	Male	69	37	28.0	9.4	27.7	9.8	14.3	20.5
12	Male	70	38	31.9	9.7	30.1	10.9	13.8	19.7
12	Male	61	35	26.7	8.3	27.3	9.2	12.9	18.7
12	Male	69	40	31.7	10.5	31.2	11.3	14.9	20.5
12	Female	69	37	26.4	7.7	24.4	8.2	13.7	19.8
12	Female	68	36	26.1	8.4	26.0	8.1	13.2	20.0
12	Female	74	41	25.9	7.3	25.5	7.7	13.7	20.7
12	Female	74	42	28.0	8.5	26.2	7.8	13.9	20.5
12	Female	72	43	25.8	8.8	27.3	9.1	16.2	21.7
12	Female	72	43	26.7	8.5	26.4	8.2	15.7	21.5
12	Female	70	40	25.0	8.5	27.2	9.1	15.3	20.5
12	Female	72	44	23.5	8.0	25.0	8.9	15.1	20.0
12	Female	81	43	28.4	9.0	29.0	8.0	19.0	21.6
12	Female	80	47	26.0	9.0	27.3	8.9	17.0	22.3
12	Female	76	45	25.0	6.0	26.1	7.6	16.2	22.1
12	Female	73	40	27.4	8.7	26.1	7.0	15.0	21.0
12	Female	78	42	25.0	6.9	26.1	7.4	15.7	20.4
12	Female	69	37	26.6	8.0	25.0	8.2	14.8	20.5
12	Female	76	44	27.2	8.1	24.5	7.7	16.7	20.4

12	Female	78	43	24.1	8.2	24.1	7.3	16.9	21.0
12	Female	73	34	27.3	8.2	26.6	7.2	16.3	21.7
12	Female	79	44	27.7	9.0	24.1	7.0	16.5	21.3
12	Female	71	40	27.0	8.8	24.3	7.9	16.0	20.0
12	Female	64	32	25.5	6.6	24.2	7.1	14.1	17.5
12	Female	76	42	28.6	9.6	25.6	8.2	15.5	21.5
12	Female	72	37	26.0	8.2	25.0	8.0	17.0	19.7
12	Female	72	43	28.5	7.8	26.4	7.5	15.2	20.7
12	Female	71	42	27.5	7.4	25.8	6.9	14.8	21.7
12	Female	72	43	24.6	6.2	27.6	7.9	14.8	19.9
12	Female	72	44	25.1	6.8	27.7	7.4	14.1	20.4
13	Female	61	35	21.0	6.3	22.0	11.0	12.9	16.9
14	Male	59	32	25.2	8.4	23.3	9.8	12.0	18.0
14	Male	62	35	25.0	8.1	26.3	8.1	13.2	19.0
14	Male	65	35	24.0	9.0	22.7	6.7	13.3	17.5
14	Female	65	45	26.4	9.0	29.0	11.1	13.1	19.3
15	Female	60	35	24.0	8.5	22.1	9.5	12.3	19.6
16	Male	59	33	23.9	8.4	24.2	10.0	13.1	18.2
16	Male	66	37	25.9	8.4	27.7	10.2	13.5	17.9
16	Male	73	42	29.4	11.0	31.4	10.3	16.0	21.3
16	Male	65	35	28.0	9.4	28.5	10.2	13.0	20.0
16	Female	65	37	25.0	7.3	25.5	7.5	13.4	19.0
19	Male	50	29	21.0	7.1	20.5	7.8	10.3	16.3
19	Male	59	34	26.5	7.7	24.2	9.5	11.7	17.4
19	Male	66	37	27.4	8.4	28.6	11.1	13.5	19.7

19	Male	51	29	20.5	6.4	20.6	7.2	10.1	16.0
19	Male	65	33	26.3	9.2	26.6	9.6	13.2	19.7
19	Male	60	33	26.0	8.9	25.7	9.7	12.2	19.3
19	Male	65	40	19.6	10.0	24.8	9.4	12.0	15.3
19	Male	60	45	26.0	9.1	25.7	10.1	11.5	17.7
19	Male	50	35	22.3	8.1	21.6	9.5	11.7	15.3
19	Male	45	30	20.1	6.6	21.5	8.2	10.5	16.3
19	Male	53	35	24.1	9.0	22.5	10.4	11.6	16.1
19	Male	62	37	25.0	9.4	25.1	10.9	12.6	17.4
19	Male	53	32	23.0	8.2	23.0	10.0	11.2	19.2
19	Male	60	34	25.0	10.6	28.1	10.6	12.5	17.9
19	Female	70	42	22.5	6.0	22.0	5.7	13.7	18.5
19	Female	59	33	20.4	6.1	19.2	6.2	11.0	17.7
19	Female	62	35	24.0	7.9	23.6	10.0	12.7	21.8
19	Female	64	34	23.1	6.3	21.0	6.9	11.8	17.9
19	Female	64	36	24.4	7.5	22.8	7.2	12.4	18.8
19	Female	67	38	24.2	7.3	21.8	6.4	12.3	17.5
19	Female	65	36	22.7	7.2	21.0	7.2	11.5	19.2
19	Female	62	34	21.4	5.4	21.0	6.9	11.2	18.2
19	Female	74	43	25.7	6.1	24.3	7.0	14.1	20.0
19	Female	71	41	25.0	8.1	25.2	8.4	14.1	20.0
19	Female	65	36	25.0	7.8	22.2	7.3	12.9	19.0
19	Female	68	41	22.5	7.3	23.4	7.4	13.0	20.0
19	Female	65	45	23.5	7.0	23.0	7.0	13.6	20.0
19	Female	60	40	24.3	8.0	22.5	8.6	13.0	19.1

19	Female	60	37	24.0	7.9	22.2	7.7	14.0	19.1
19	Female	62	40	20.9	6.5	20.5	6.2	12.2	17.6
25	Male	65	28	30.0	9.9	30.1	9.0	14.5	22.0
25	Male	64	31	26.6	8.1	27.3	9.5	14.6	19.6
25	Female	59	30	22.0	5.6	21.2	6.1	12.3	16.3
25	Female	73	34	27.6	7.7	26.6	7.2	15.2	21.2
31	Male	57	32	26.0	11.1	26.8	12.4	12.0	17.0
31	Female	65	40	20.6	9.9	20.6	9.9	10.2	20.6
34	Male	55	31	22.8	7.1	23.2	8.2	12.0	16.4
34	Male	58	30	23.6	6.6	24.3	8.1	12.6	18.1
34	Male	61	36	24.2	6.5	26.5	8.0	13.7	19.0
34	Female	69	40	25.3	7.4	24.1	6.5	14.3	18.8
38	Male	72	47	31.8	6.9	26.6	6.3	13.0	18.3
38	Male	63	35	24.8	7.1	21.7	5.4	12.7	17.0
38	Male	80	43	24.3	5.7	26.8	6.3	14.7	18.3
38	Male	68	38	24.8	5.2	24.3	5.5	13.3	16.3
38	Male	63	29	24.7	5.6	24.8	6.1	11.0	15.2
38	Male	65	36	24.2	6.5	24.0	6.8	12.7	15.5
38	Male	66	34	24.7	7.2	25.2	6.0	12.3	16.1
38	Male	69	34	24.9	6.1	25.4	6.0	12.8	16.1
38	Male	63	32	23.3	4.9	23.7	5.5	12.1	15.2
38	Male	75	36	27.4	5.6	27.6	6.8	13.4	17.8
38	Male	75	35	25.7	6.9	25.6	7.0	13.2	16.7
38	Male	71	40	26.6	6.0	27.0	5.9	13.7	17.9
38	Male	66	35	24.4	5.9	26.0	6.8	12.6	17.0

38	Male	72	38	25.9	6.4	26.3	6.6	13.7	17.0
38	Male	69	34	24.3	7.0	25.8	6.1	13.6	17.3
38	Male	68	33	22.9	5.8	25.0	6.1	12.1	16.7
38	Male	65	35	26.3	6.7	25.0	6.5	12.4	17.4
38	Male	68	35	24.5	7.0	25.6	7.1	12.4	16.6
38	Male	70	34	26.1	7.2	26.0	7.3	12.6	16.4
38	Male	64	33	22.2	5.8	23.0	6.0	11.5	15.6
38	Female	64	38	25.5	5.7	24.9	7.4	12.4	15.7
38	Female	63	40	27.0	8.9	27.7	7.7	11.3	15.1
38	Female	62	34	26.1	6.7	25.8	7.8	11.4	15.3
38	Female	61	33	25.6	6.4	28.5	8.0	12.6	17.2
38	Female	65	35	27.8	7.3	27.6	8.1	12.9	17.5
38	Female	58	29	23.1	7.0	24.0	6.9	11.6	14.7
38	Female	67	35	23.9	6.6	26.0	8.8	13.5	18.9
38	Female	55	30	22.2	7.4	23.5	7.4	11.3	15.7
38	Female	58	28	22.6	5.6	23.0	6.7	10.8	15.3
38	Female	66	31	26.8	6.8	25.4	8.6	13.5	16.7
38	Female	65	31	25.3	8.2	27.9	8.7	13.0	16.4
38	Female	60	28	22.9	6.8	27.7	7.1	11.3	15.9
38	Female	65	31	24.1	7.3	24.7	8.1	11.8	16.2
38	Female	57	32	24.6	7.4	24.8	6.8	11.9	15.5
38	Female	63	33	25.7	6.2	26.3	8.2	13.4	16.9
38	Female	62	33	25.9	7.9	26.3	7.9	12.0	16.9
38	Female	65	31	25.7	7.7	25.7	9.1	12.6	16.8
38	Female	60	27	22.9	6.4	23.8	7.5	11.4	15.7

38	Female	63	31	22.4	5.5	23.1	7.9	12.0	16.4
38	Female	65	32	24.0	5.7	25.3	7.8	12.1	16.3
42	Male	65	36	28.6	10.4	28.0	11.0	13.4	18.7
42	Male	59	31	24.8	8.5	24.4	10.0	12.6	17.2
42	Male	58	31	24.1	8.2	25.5	9.2	12.0	12.0
42	Male	62	36	27.9	10.1	29.3	11.6	14.2	20.0
42	Female	74	40	23.6	8.3	24.1	8.7	15.6	21.7
42	Female	72	41	26.3	8.8	25.5	9.3	13.4	21.0
42	Female	73	42	24.9	8.7	24.0	8.7	14.2	19.4
48	Male	56	30	20.1	6.0	20.1	7.4	11.7	16.1
48	Male	56	32	20.2	7.3	21.1	7.5	11.6	15.0
51	Male	61	33	25.2	10.1	27.0	10.1	12.6	18.0
51	Male	60	34	28.0	9.6	27.1	10.4	14.0	20.0
51	Male	65	38	28.0	8.5	31.2	12.4	14.5	20.0
51	Male	60	33	28.0	9.7	27.1	11.0	14.0	18.8
51	Male	60	31	26.5	8.4	24.7	9.9	12.2	18.1
51	Male	65	33	29.0	10.6	29.2	12.1	14.2	20.5
51	Male	60	34	28.4	9.8	27.0	9.5	14.0	17.9
51	Male	69	36	30.0	10.0	30.1	9.5	13.0	19.4
51	Male	65	32	28.6	9.8	26.3	11.7	14.0	20.1
51	Male	60	29	26.0	9.1	26.1	10.4	13.1	19.2
51	Male	65	34	29.1	11.2	30.0	12.4	15.0	19.6
51	Male	62	31	27.2	10.0	29.0	12.6	13.2	18.9
51	Male	70	35	33.4	10.5	33.2	12.6	13.6	19.0
51	Male	65	35	30.2	9.7	29.0	10.7	14.2	21.7

51	Male	58	29	25.2	8.2	27.1	10.1	12.0	17.6
51	Male	61	31	29.3	10.0	28.3	10.4	13.7	18.8
51	Male	61	30	27.4	9.5	27.1	10.8	12.9	19.0
51	Male	64	32	28.1	9.0	27.6	11.0	12.8	19.6
51	Male	65	32	27.8	9.3	29.2	11.0	13.3	16.6
51	Male	73	40	27.8	10.3	27.5	11.0	12.5	21.7
51	Male	65	35	25.3	7.2	24.0	9.6	14.0	19.4
51	Male	71	35	27.5	10.4	27.8	12.3	14.9	19.7
51	Male	52	28	23.0	8.0	23.0	10.3	11.0	15.4
51	Male	59	35	25.0	9.0	27.0	11.0	12.2	17.3
51	Male	55	32	21.3	8.6	21.8	9.0	11.3	15.7
51	Male	65	40	26.4	9.5	28.0	11.0	14.3	17.2
51	Male	58	35	26.0	9.4	24.0	9.0	13.1	17.0
51	Male	63	33	26.6	10.0	26.4	9.2	14.0	19.5
51	Male	69	37	28.4	9.5	29.0	11.4	14.0	20.2
51	Male	65	35	30.0	10.0	29.0	12.6	13.6	18.7
51	Male	71	38	27.6	8.5	30.8	8.1	13.9	18.2
51	Male	66	36	29.1	7.6	30.1	6.8	13.8	16.7
51	Male	67	42	28.8	7.2	29.0	7.7	13.5	17.3
51	Male	66	36	28.9	8.7	29.5	7.6	13.7	15.8
51	Male	67	40	28.9	8.1	29.6	6.5	12.3	15.6
51	Male	67	38	27.8	6.6	29.2	7.6	12.9	18.0
51	Male	69	42	31.8	6.9	32.0	8.1	14.6	18.2
51	Male	69	42	28.0	7.5	29.3	8.2	13.6	18.8
51	Male	66	39	24.6	6.1	24.7	7.8	13.5	16.0

51	Male	65	35	27.8	7.6	29.3	8.0	13.3	17.0
51	Female	75	37	28.1	9.2	24.1	9.9	14.8	22.5
51	Female	72	41	28.2	7.5	27.5	6.2	13.1	17.5
51	Female	68	34	28.0	10.0	24.5	13.0	12.6	20.0
51	Female	68	39	27.3	8.2	27.9	7.2	13.4	17.3
51	Female	78	47	26.0	7.8	27.3	8.1	15.1	19.3
51	Female	72	41	24.9	6.5	24.5	6.6	14.0	16.2
51	Female	62	42	24.5	6.4	25.8	6.3	13.2	17.1
51	Female	62	37	23.0	8.7	22.2	9.4	12.4	16.0
51	Female	69	38	27.1	9.0	28.2	10.0	15.0	19.6
51	Female	71	38	29.0	9.9	28.4	10.5	14.1	20.0
51	Female	69	37	26.1	8.9	27.0	9.0	13.2	17.0
51	Female	70	37	28.0	9.3	26.5	9.4	12.1	19.2
51	Female	70	37	26.6	9.4	27.5	9.0	13.3	18.2
51	Female	75	41	29.2	9.2	24.7	9.6	15.0	21.0
51	Female	71	41	26.4	8.8	24.0	8.0	15.2	19.5
51	Female	65	40	28.4	8.6	27.3	9.4	14.0	15.2
51	Female	82	53	29.0	9.6	29.4	10.3	16.2	21.8
51	Female	71	42	26.0	8.1	23.6	8.2	14.0	19.0
51	Female	65	33	28.0	8.7	27.2	9.4	13.2	18.7
51	Female	71	36	27.6	9.4	26.0	9.3	15.0	21.1
51	Female	70	40	26.8	8.2	26.2	9.1	15.0	20.0
51	Female	70	37	27.0	9.8	26.1	10.0	14.0	20.2
51	Female	71	40	26.5	8.7	27.2	10.4	13.3	20.0
51	Female	71	40	27.1	9.1	29.6	8.5	14.6	19.7

51	Female	69	34	26.5	9.1	26.3	9.5	15.0	18.2
51	Female	70	37	27.0	9.6	25.7	9.3	13.3	19.7
51	Female	70	38	26.0	8.0	26.1	8.3	14.0	19.3
51	Female	72	38	31.0	9.4	28.0	9.7	16.0	20.6
51	Female	67	35	28.1	9.3	27.3	9.0	14.0	19.1
51	Female	71	40	31.0	10.1	28.2	10.0	14.6	20.2
51	Female	71	43	27.5	9.4	29.0	10.6	15.3	20.2
53	Male	60	35	23.5	7.4	23.3	6.9	10.3	17.4
53	Male	61	35	22.7	8.1	22.1	8.2	14.4	17.3
53	Male	67	33	22.0	8.3	22.1	8.3	12.2	17.0
53	Female	62	40	25.3	7.5	25.6	9.5	12.3	15.1
53	Female	52	34	23.5	8.0	23.5	10.0	11.7	16.1
53	Female	65	34	22.1	9.4	25.0	11.2	12.3	16.3
53	Female	62	32	22.3	6.9	21.6	9.1	11.0	14.5
53	Female	67	36	25.4	10.2	23.1	10.0	13.0	16.2
53	Female	52	31	22.3	8.5	20.2	8.7	11.1	13.0
55	Male	60	35	25.3	9.4	25.0	10.0	12.7	18.0
55	Male	65	40	29.5	12.3	25.4	11.5	15.2	21.2
55	Male	60	30	23.0	8.1	24.0	10.1	12.0	16.5
55	Male	64	35	22.8	9.6	21.6	9.0	12.5	18.4
55	Male	63	35	28.0	9.2	25.2	9.3	14.2	18.1
55	Male	55	35	21.1	7.2	23.5	9.9	11.1	12.3
55	Male	52	33	23.5	9.1	23.6	9.5	12.3	14.2
55	Male	45	30	19.9	7.0	20.0	7.7	10.0	11.5
55	Male	62	30	21.5	8.0	23.1	8.6	11.0	15.0

55	Male	60	31	22.0	9.3	24.4	9.5	11.7	16.0
55	Male	55	32	21.2	8.0	22.3	9.0	12.4	17.0
55	Male	58	31	27.1	10.0	28.1	10.6	13.0	16.2
55	Male	55	30	21.0	9.0	21.8	7.5	11.0	16.0
55	Male	40	25	18.2	8.1	19.5	8.0	9.2	14.5
55	Male	55	31	20.0	10.0	22.0	9.2	11.3	16.6
55	Male	65	35	21.3	8.0	23.6	8.4	13.4	18.5
55	Female	51	30	19.5	7.7	21.0	8.2	11.0	17.0
55	Female	58	33	20.4	7.3	21.9	7.1	12.0	17.8
55	Female	55	32	21.1	8.4	19.9	8.2	11.5	16.4
55	Female	75	45	23.7	9.2	25.0	9.0	15.0	19.0
55	Female	65	32	22.6	8.5	23.9	7.8	12.5	17.0
55	Female	59	35	23.0	8.8	22.5	7.6	12.2	15.1
55	Female	63	35	23.0	7.1	21.2	7.0	13.0	19.1
55	Female	55	32	23.0	7.1	20.2	7.2	12.5	18.0
55	Female	75	40	26.4	9.0	22.3	8.3	15.1	23.0
55	Female	60	40	25.2	7.1	24.5	7.2	14.0	17.2
55	Female	57	32	22.0	7.2	22.3	7.2	12.1	16.1
55	Female	62	33	23.1	8.0	23.3	7.2	13.3	17.0
55	Female	62	41	22.7	8.0	21.5	7.7	12.5	16.7
55	Female	62	35	23.6	7.1	20.7	9.1	12.6	18.0
55	Female	65	35	22.5	8.3	20.1	8.0	13.0	18.1
55	Female	67	35	24.5	7.4	22.4	7.3	13.2	17.4
55	Female	70	40	24.0	8.5	23.1	7.2	14.0	17.6
55	Female	67	40	25.0	7.2	22.3	7.0	15.1	17.4

55	Female	65	35	23.2	9.3	26.2	8.0	14.6	19.4
55	Female	65	40	24.0	8.0	21.5	7.6	13.2	18.2
55	Female	70	40	24.7	9.0	24.0	6.6	15.0	20.5
55	Female	65	37	25.0	8.2	23.3	8.2	12.8	18.5
55	Female	60	35	22.0	8.0	20.7	8.0	12.1	18.3
55	Female	62	36	22.9	8.0	24.9	8.1	14.0	18.6
55	Female	55	34	22.0	7.0	21.3	7.1	11.2	16.3
55	Female	55	32	22.5	7.2	23.0	8.7	12.9	18.0
55	Female	65	42	22.0	9.0	24.9	7.5	14.0	17.0
55	Female	52	40	23.9	7.2	24.0	8.7	13.4	18.5
55	Female	65	40	24.1	8.7	25.2	8.4	13.3	16.6
55	Female	62	33	24.1	8.6	26.9	7.3	14.4	15.7
55	Female	65	31	24.5	7.4	24.3	7.0	13.4	18.0
55	Female	65	40	24.0	9.0	23.7	8.4	14.2	19.9
55	Female	67	35	24.2	9.2	22.0	9.0	13.2	18.0
55	Female	62	42	28.0	9.3	28.0	9.0	15.2	21.7
57	Male	54	32	24.3	9.7	24.3	8.2	12.5	17.6
57	Male	60	33	23.3	7.7	21.9	10.0	12.4	19.4
57	Male	70	36	25.4	9.7	24.8	9.2	14.3	19.0
57	Male	81	50	24.2	8.4	25.4	9.0	15.2	20.3
57	Male	65	35	23.2	7.3	22.4	9.0	13.8	19.8
57	Male	64	37	22.1	8.0	21.4	7.0	12.3	16.4
57	Male	70	40	27.2	9.5	24.0	7.7	13.8	17.3
57	Male	66	35	19.0	7.3	25.1	8.6	12.4	17.6
57	Male	71	42	26.5	11.0	25.4	10.0	12.7	16.8

57	Male	62	40	22.4	8.0	22.2	9.1	11.5	12.9
57	Male	61	30	25.8	8.2	27.4	8.8	13.3	18.3
57	Male	54	31	23.0	7.1	23.1	6.6	11.7	16.5
57	Male	65	38	27.7	8.7	28.3	7.8	12.9	18.1
57	Female	62	31	26.2	9.9	26.4	10.2	13.0	19.6
57	Female	68	32	27.3	11.6	27.2	11.2	14.1	16.2
57	Female	62	35	24.0	8.2	27.4	11.9	15.5	19.5
57	Female	62	33	23.1	9.4	24.5	11.4	14.0	17.0
57	Female	49	30	20.4	7.0	20.5	11.0	12.0	16.5
57	Female	65	30	22.1	11.3	24.3	12.7	13.2	18.1
57	Female	58	30	24.6	9.1	25.0	11.3	13.2	18.1
57	Female	61	30	22.1	9.0	22.2	8.8	12.0	15.5
57	Female	58	31	24.5	9.0	23.5	9.7	11.6	15.2
57	Female	60	32	23.5	9.6	22.1	11.4	12.4	16.0
57	Female	63	35	22.5	6.4	23.4	4.9	13.3	17.4
57	Female	60	36	21.2	6.4	22.4	5.5	12.2	16.9
57	Female	64	36	24.4	6.6	24.4	7.1	13.5	18.7
57	Female	65	36	25.9	7.5	24.0	7.0	13.9	19.0
57	Female	67	40	25.7	7.3	24.3	6.3	13.5	18.0
60	Male	66	37	26.0	8.1	25.0	10.1	13.9	20.2
62	Male	63	33	28.0	9.7	26.5	10.6	13.0	17.2
62	Male	61	32	24.0	8.3	26.1	9.7	13.0	18.3
62	Male	67	35	26.1	10.2	24.4	11.2	14.0	19.9
62	Male	61	32	25.1	10.0	25.1	10.0	13.0	14.6
62	Male	61	34	23.0	8.6	24.0	9.5	11.3	16.2

62	Male	62	32	24.2	9.0	25.3	11.4	13.1	15.0
62	Male	61	34	24.5	7.6	24.2	10.4	12.8	16.6
62	Female	65	40	23.0	7.2	19.4	7.2	13.5	16.6
62	Female	72	45	24.4	10.2	25.3	9.3	13.0	17.0
62	Female	63	32	25.0	7.5	24.2	7.6	12.3	17.2
70	Male	60	32	24.8	7.2	27.4	7.4	12.8	16.7
70	Male	64	39	26.3	7.9	24.2	7.6	13.7	17.0
70	Male	61	33	25.0	6.7	26.3	7.5	12.3	17.0
70	Male	58	30	24.6	8.4	23.7	8.5	12.5	16.7
70	Female	65	35	22.3	5.5	23.9	5.9	14.0	17.5
70	Female	59	31	22.0	4.9	18.8	7.2	12.7	15.5
70	Female	54	30	22.1	6.2	20.6	5.1	12.7	14.9
70	Female	65	32	22.9	5.7	19.7	6.5	14.8	16.5
70	Female	60	35	22.0	6.1	17.1	5.8	12.9	16.4
70	Female	63	37	20.8	5.9	21.0	6.0	12.8	16.0
70	Female	66	34	23.9	6.1	22.8	7.1	14.3	17.6
70	Female	61	31	22.0	5.7	22.6	5.2	11.9	16.6
72	Male	63	34	22.7	5.0	24.3	4.8	15.7	15.8
72	Male	58	37	23.6	6.8	24.7	7.8	12.6	15.4
72	Male	64	34	24.5	7.8	24.7	8.3	12.5	14.8
72	Female	62	32	22.3	5.5	20.8	4.9	12.3	18.4
72	Female	62	36	23.2	6.0	24.4	6.5	12.8	18.5
72	Female	73	36	27.2	7.5	25.5	5.8	14.8	20.5
72	Female	65	32	22.3	6.5	21.9	5.0	13.2	15.8
72	Female	76	44	23.4	5.6	25.0	6.4	15.4	19.0

72	Female	59	35	21.8	5.9	23.2	5.6	12.5	16.4
72	Female	58	34	22.4	5.3	19.4	5.2	11.9	14.4
72	Female	74	44	24.7	6.8	24.0	5.9	14.2	18.9
72	Female	60	35	21.6	4.6	21.4	5.0	11.7	15.0
72	Female	66	31	22.5	7.0	21.6	6.4	12.7	15.4
72	Female	64	31	23.0	7.8	25.1	6.7	13.3	18.7
72	Female	64	35	22.9	7.8	24.8	6.3	14.0	17.8
72	Female	54	29	21.4	6.2	20.9	7.2	10.9	15.5
72	Female	62	39	23.0	6.5	24.1	6.8	13.1	18.5
73	Female	70	39	22.3	7.2	21.5	6.5	14.7	18.5
73	Female	54	26	21.1	6.0	19.4	5.7	12.4	16.2
76	Male	55	26	20.2	6.9	22.5	6.4	12.4	15.4
76	Male	57	29	21.7	6.3	22.7	7.4	12.6	16.9
76	Male	63	30	24.6	6.5	26.4	6.7	13.1	17.6
76	Female	70	37	23.3	6.5	24.7	6.3	13.4	18.0
76	Female	70	36	26.2	7.4	25.4	8.1	15.0	19.1
80	Male	54	27	21.6	6.7	23.6	6.9	11.5	15.7
80	Male	58	27	24.0	8.0	24.3	9.0	11.8	14.7
80	Male	58	30	25.1	5.5	24.8	6.8	12.5	17.6
80	Male	60	31	23.8	5.8	25.4	7.0	13.0	17.3
80	Male	60	30	26.8	8.5	26.6	8.8	12.7	17.5
80	Male	54	29	22.2	5.4	23.9	6.6	11.6	16.3
80	Male	50	26	21.0	6.5	22.4	5.9	10.8	14.3
80	Male	55	27	21.1	6.1	20.8	7.5	11.8	14.6
80	Male	54	26	20.9	5.7	19.3	6.2	11.8	14.5

80	Male	58	29	23.9	7.0	24.0	6.7	11.4	16.8
80	Male	58	29	22.9	7.0	24.3	8.2	11.9	16.3
80	Male	52	26	20.8	5.9	21.5	6.7	10.9	16.0
80	Female	65	29	21.7	5.9	21.2	4.9	12.9	15.4
80	Female	64	32	22.9	6.9	22.2	6.6	12.9	15.5
80	Female	64	29	21.5	5.8	20.4	5.8	12.6	16.0
80	Female	64	33	22.3	5.6	23.3	5.9	12.9	13.8
80	Female	61	35	22.8	6.8	23.3	5.6	12.1	17.7
80	Female	62	32	20.8	5.0	21.0	5.5	11.8	16.3
80	Female	64	32	24.0	4.9	21.4	6.3	12.9	17.3
80	Female	65	30	22.7	6.8	21.6	5.2	12.1	13.0
80	Female	55	27	18.4	6.2	18.7	6.1	12.5	14.3
80	Female	55	29	19.2	5.3	17.7	5.1	11.0	14.4
80	Female	63	34	23.5	6.0	24.9	6.2	12.6	18.4
80	Female	59	28	20.8	5.1	19.8	5.5	12.0	15.1
80	Female	61	35	22.3	6.5	22.4	4.9	12.8	16.6
80	Female	63	29	22.4	6.7	23.1	7.1	12.3	16.7
80	Female	65	35	21.0	5.0	22.3	5.7	12.0	16.2
80	Female	64	34	21.1	5.3	23.9	5.4	12.7	16.6
80	Female	64	35	23.9	5.9	23.1	6.6	12.6	17.3
80	Female	59	27	19.9	6.5	18.4	6.2	10.7	13.0
80	Female	61	32	21.6	6.6	21.0	5.5	13.3	15.0
80	Female	64	29	23.6	6.6	22.3	5.7	12.0	15.4
80	Female	63	32	20.9	5.8	21.0	4.6	12.6	15.8
80	Female	56	30	19.9	6.1	20.0	4.9	11.9	15.6

80	Female	63	28	23.4	5.5	21.0	5.9	12.6	14.5
80	Female	60	31	18.2	7.2	20.1	5.9	12.5	13.9
80	Female	68	35	24.6	5.9	24.0	6.0	12.7	18.5
80	Female	54	28	18.1	5.8	19.0	4.2	11.1	14.5
80	Female	62	31	21.3	6.3	21.0	5.8	12.0	14.0
80	Female	64	33	22.5	6.8	21.9	6.4	12.7	15.4
80	Female	57	29	20.6	5.2	20.3	5.0	11.5	13.7
80	Female	63	33	21.7	5.0	20.9	6.4	11.6	14.6
91	Male	57	31	23.1	7.7	24.0	8.3	12.1	14.4
91	Male	52	27	21.6	7.5	21.4	7.2	11.7	13.4
91	Male	52	28	22.8	7.4	22.0	7.9	12.3	14.2
91	Male	55	27	22.0	7.4	23.4	8.5	12.0	12.2
91	Male	51	26	20.9	7.1	21.2	7.5	11.4	13.6
91	Male	54	28	23.0	8.5	23.1	8.5	12.7	14.0
91	Male	51	27	22.4	7.9	22.7	8.5	11.8	13.5
91	Female	64	33	23.7	7.8	23.6	7.1	13.4	14.8
91	Female	59	31	23.5	7.7	22.6	7.1	12.7	13.6
91	Female	62	33	22.2	6.7	22.2	6.6	13.3	14.0
91	Female	63	33	23.9	7.5	22.9	7.2	13.5	15.1
91	Female	67	36	25.0	7.1	23.5	7.4	14.9	15.9
91	Female	65	34	24.9	7.5	23.2	7.6	14.3	15.4
91	Female	58	30	22.2	6.5	22.0	8.5	13.2	14.9
91	Female	60	31	24.6	7.4	23.3	7.1	13.2	14.7
91	Female	62	32	24.0	7.6	22.3	7.0	11.2	14.8
91	Female	59	30	21.9	6.7	22.2	6.3	12.9	14.2

91	Female	68	36	26.0	8.3	24.6	8.0	14.8	15.2
91	Female	63	34	22.9	6.7	21.7	6.6	13.8	14.8
91	Female	66	34	24.5	7.5	23.3	7.4	13.7	15.4
91	Female	68	37	26.3	7.7	23.6	7.1	14.9	15.4
92	Male	59	32	23.8	7.1	24.2	6.9	12.5	16.5
92	Male	61	31	22.9	7.2	24.9	9.2	12.7	16.4
92	Male	68	34	26.9	8.3	26.3	6.8	14.1	18.2
92	Male	60	30	26.3	8.3	27.5	8.5	13.8	18.3
92	Male	59	29	25.0	9.0	23.9	7.9	12.8	16.5
92	Male	59	35	22.7	6.5	23.3	6.8	12.5	16.5
92	Male	57	30	22.6	7.2	23.9	7.8	12.2	17.0
92	Male	59	29	24.2	7.9	25.9	7.2	12.2	16.6
92	Male	55	26	24.4	8.0	25.1	6.8	12.5	16.2
92	Male	53	26	21.6	7.0	23.1	6.6	11.9	15.9
92	Male	57	32	22.0	7.2	23.3	9.0	12.1	16.4
92	Female	61	35	21.0	6.0	23.5	6.0	12.5	18.2
92	Female	65	35	22.7	6.5	23.7	6.4	12.7	16.6
92	Female	75	40	25.9	6.0	24.6	6.6	15.4	21.4
92	Female	69	36	24.5	7.4	23.0	7.1	13.4	15.9
92	Female	70	37	24.3	6.8	23.5	5.6	13.5	19.9
92	Female	65	33	24.6	6.9	26.0	6.1	13.8	16.7
92	Female	68	34	23.2	6.4	23.3	5.9	13.7	16.4
92	Female	67	33	23.7	7.5	23.6	7.0	14.4	17.1
92	Female	63	31	22.1	7.6	23.7	7.0	12.8	15.5
92	Female	65	34	22.8	6.9	23.6	5.5	13.2	16.6

92	Female	66	35	23.9	7.2	24.6	6.4	13.3	16.9
92	Female	65	31	23.3	6.7	25.9	6.4	12.9	18.4
92	Female	59	30	21.0	6.1	22.6	5.1	11.6	14.2
92	Female	68	35	24.0	7.4	25.8	6.7	12.5	18.3
95	Male	61	30	23.3	6.4	24.4	6.4	12.2	16.7
95	Male	54	28	21.8	5.6	23.2	6.1	11.9	15.0
95	Male	53	27	20.5	5.0	22.4	5.0	11.3	15.5
95	Male	58	33	24.1	6.9	24.6	6.5	13.3	15.4
95	Female	56	32	22.0	5.2	21.0	5.5	10.5	15.0
95	Female	61	34	22.8	5.9	23.5	5.4	12.3	17.9
95	Female	64	35	22.1	4.5	23.6	5.8	12.6	16.1
95	Female	59	30	22.4	6.0	22.9	6.4	12.5	16.2
95	Female	65	31	24.1	6.7	23.8	6.0	13.2	17.6
95	Female	56	28	20.4	5.8	21.2	6.0	11.9	15.7
95	Female	53	27	21.6	5.5	21.6	4.6	11.1	15.5
95	Female	58	33	22.6	6.2	23.3	5.8	12.0	16.5
95	Female	60	33	23.8	6.6	23.5	5.0	12.3	14.5
95	Female	63	35	24.8	6.0	23.9	6.3	13.5	19.7
95	Female	59	33	20.0	5.3	21.8	4.5	12.4	15.8
95	Female	63	34	21.4	4.6	23.4	5.3	13.4	16.7
95	Female	58	30	20.5	5.0	20.1	4.7	12.3	16.2
95	Female	62	35	22.4	5.8	23.5	5.1	12.3	15.8
95	Female	60	32	24.5	6.8	22.3	5.4	12.6	16.9
95	Female	61	36	23.3	5.9	21.7	5.2	11.7	16.8
95	Female	62	31	23.2	5.8	22.5	5.4	12.7	16.8

96	Male	63	35	23.0	8.5	25.0	11.4	12.0	18.2
96	Male	62	34	25.5	10.4	26.3	11.9	12.5	18.1
96	Male	61	33	24.8	9.9	25.9	9.9	13.4	19.6
96	Male	62	35	25.7	11.2	27.2	14.0	12.8	17.3
96	Male	57	31	23.1	9.5	26.0	11.2	11.4	17.0
96	Female	75	50	27.8	11.3	27.5	10.3	15.5	19.3
96	Female	68	40	26.1	8.0	24.0	8.6	13.5	17.1
96	Female	67	40	23.9	8.5	24.4	9.4	13.1	17.9
96	Female	65	35	21.7	7.7	23.1	8.4	13.0	17.4
96	Female	71	40	27.5	10.4	26.0	10.0	14.1	18.0
100	Male	73	38	30.3	8.9	32.6	9.3	15.1	20.1
100	Male	58	31	25.3	7.8	25.1	7.3	12.5	17.9
100	Male	65	32	28.8	7.4	27.0	8.3	13.3	19.0
100	Male	70	39	27.4	7.8	28.7	7.9	14.3	20.8
100	Male	70	38	29.4	8.4	28.7	8.8	14.6	18.0
100	Male	66	37	27.9	7.6	30.0	8.5	13.8	18.8
100	Male	59	30	25.8	6.7	25.3	7.2	13.2	17.5
100	Male	65	37	27.3	7.2	27.9	7.8	13.8	18.0
100	Male	74	42	31.7	9.2	33.0	9.6	15.5	21.1
100	Male	67	33	30.5	8.6	30.2	9.1	14.2	16.8
100	Male	66	34	30.0	8.8	28.5	8.3	14.5	18.5
100	Male	62	36	28.3	8.8	28.8	9.3	13.6	16.1
100	Female	73	39	27.2	7.8	27.5	6.3	15.6	19.4
100	Female	73	40	27.7	6.7	28.2	7.1	14.2	20.5
100	Female	75	41	24.3	8.0	28.9	7.7	14.7	19.6

100	Female	76	43	28.4	7.4	28.0	7.1	15.6	21.3
100	Female	76	42	28.9	8.4	28.5	7.8	15.1	18.9
100	Female	71	40	26.5	7.4	26.7	6.6	15.5	20.6
100	Female	75	40	28.1	6.4	26.5	6.2	15.4	21.5
100	Female	75	44	28.5	6.7	27.4	6.6	15.6	19.3
100	Female	72	40	29.0	7.5	28.8	6.6	15.5	19.5
100	Female	76	40	28.6	6.5	28.8	7.7	14.4	22.2
100	Female	74	42	28.2	6.8	26.3	6.3	14.6	19.1
100	Female	71	38	25.3	7.1	25.5	6.4	14.3	19.5
102	Male	65	37	27.7	9.6	28.9	7.8	13.7	18.0
102	Male	67	38	27.0	8.3	27.8	8.7	12.8	18.3
102	Male	69	33	28.2	7.8	28.8	8.8	14.2	18.8
102	Male	69	33	27.2	7.8	27.8	7.5	13.7	19.2
102	Male	61	35	23.9	7.3	26.1	9.3	13.5	16.6
102	Female	72	41	27.5	7.3	26.3	7.0	14.4	19.4
102	Female	69	35	26.7	6.9	26.2	7.0	13.7	18.3
102	Female	73	36	26.2	6.5	25.4	6.5	15.5	20.6
102	Female	70	38	27.3	8.0	27.1	5.7	14.1	20.3
102	Female	76	49	28.0	7.5	28.4	6.2	16.6	21.5
102	Female	73	40	27.7	6.9	27.0	6.5	13.8	17.5
102	Female	72	35	25.6	7.2	26.1	7.8	14.2	17.9
102	Female	67	31	26.3	6.5	25.3	6.9	14.4	18.3
102	Female	68	33	26.2	5.7	25.7	5.7	14.4	19.0
102	Female	71	40	25.7	6.5	25.1	6.2	14.4	19.7
102	Female	68	32	25.7	6.1	24.6	6.3	13.8	17.0

102	Female	67	33	24.5	6.1	25.1	6.8	13.0	17.3
102	Female	68	40	25.5	7.2	23.6	6.5	13.5	19.0
102	Female	72	33	26.4	7.5	26.2	6.3	14.1	19.3
102	Female	71	34	24.1	6.1	26.2	6.2	13.9	19.4
102	Female	66	31	23.2	6.3	25.6	7.5	14.3	17.3
103	Male	59	29	24.4	6.7	28.0	9.7	13.5	17.3
103	Male	61	32	25.2	8.6	25.8	7.8	13.0	18.7
103	Male	60	26	24.8	7.5	24.8	7.4	12.8	17.8
103	Male	60	29	26.8	9.0	27.4	8.3	13.7	18.1
103	Male	55	28	22.5	7.0	23.6	7.0	11.9	17.6
103	Male	55	27	22.7	7.8	24.2	7.2	12.0	16.2
103	Female	60	35	23.6	8.5	26.0	7.2	12.9	18.2
103	Female	64	32	23.6	5.9	22.8	6.1	12.5	19.2
103	Female	60	32	22.1	5.9	23.0	6.7	12.8	16.5
103	Female	64	32	25.0	6.9	23.9	7.7	13.4	17.2
103	Female	67	39	24.8	7.2	24.5	6.1	14.2	16.9
103	Female	61	32	23.2	6.5	22.7	5.5	13.0	17.8
103	Female	61	34	24.4	6.4	23.9	6.5	12.8	16.7
103	Female	61	32	21.5	6.5	22.2	5.2	12.4	15.9
103	Female	59	29	22.2	7.6	23.4	7.0	12.8	17.2
103	Female	67	33	24.7	6.3	24.7	6.4	13.6	17.2
103	Female	66	34	24.6	5.2	24.9	6.5	13.1	17.4
103	Female	62	33	23.3	7.2	23.6	5.8	12.9	16.0
103	Female	64	31	23.6	6.1	22.6	7.1	13.3	17.2
103	Female	64	33	23.4	6.2	23.2	6.3	12.9	16.4

103	Female	59	30	22.1	6.4	23.8	6.0	12.3	16.8
103	Female	65	34	24.5	8.0	25.6	6.3	13.7	17.1
103	Female	68	33	23.3	6.8	22.8	6.2	13.7	19.0
103	Female	59	28	22.3	6.5	23.1	5.8	13.0	17.3
103	Female	65	37	24.5	6.2	23.4	5.7	12.8	18.0
103	Female	60	35	22.5	7.0	22.7	5.8	12.8	16.7
103	Female	61	30	22.8	6.2	23.0	5.5	12.5	16.4
103	Female	64	31	24.5	7.3	24.7	7.1	13.5	18.0
108	Male	64	34	24.4	8.3	26.5	9.3	13.5	17.3
108	Male	65	34	30.0	10.3	28.2	10.0	13.6	19.2
108	Male	62	31	27.3	8.7	24.8	8.9	13.2	17.5
108	Male	66	36	26.8	8.6	26.8	9.5	13.5	18.5
108	Male	61	28	25.3	7.8	26.3	8.2	13.2	17.3
108	Male	70	34	26.5	9.1	27.1	8.4	13.8	18.0
108	Male	68	35	25.9	8.5	26.5	8.5	14.5	20.1
108	Male	63	32	26.4	6.4	29.2	8.8	14.5	19.3
108	Male	68	36	29.4	9.2	28.7	9.0	15.0	20.2
108	Male	64	30	26.1	6.6	25.7	7.6	13.3	19.0
108	Female	69	37	25.7	8.0	24.9	6.8	13.5	15.8
108	Female	75	41	25.5	6.9	25.4	7.1	15.4	19.4
108	Female	72	41	25.1	8.3	25.1	7.0	15.1	19.0
108	Female	71	39	26.7	6.9	27.1	7.4	15.9	19.0
108	Female	71	40	25.5	7.7	26.0	7.4	14.0	19.4
108	Female	68	38	24.2	7.4	24.0	6.8	14.0	19.4
108	Female	66	32	24.5	7.6	25.1	6.5	14.1	17.4

108	Female75	40	27.6	8.5	28.4	6.4	16.5	22.2
108	Female73	35	28.3	6.8	26.5	7.2	14.4	21.9
108	Female76	40	29.7	8.6	28.5	7.3	15.3	21.4
108	Female63	31	23.6	7.4	23.2	6.8	13.0	17.6
108	Female64	33	23.2	5.6	22.6	5.8	12.7	17.8
108	Female68	33	24.6	7.8	23.4	6.5	14.4	20.0
108	Female69	37	24.0	7.8	24.1	6.2	13.8	18.4
108	Female70	36	25.5	7.3	25.5	6.3	15.2	17.1
108	Female73	42	24.0	7.7	26.2	6.5	14.9	20.4
108	Female67	39	25.5	6.9	26.4	6.3	13.3	18.9
108	Female69	38	24.2	7.8	24.1	5.6	14.2	18.9
108	Female71	36	25.2	7.8	24.7	6.2	14.2	19.4
108	Female74	40	26.0	7.5	25.6	5.3	14.9	22.6
108	Female70	36	25.1	7.7	25.4	5.9	15.1	20.7
119	Male 59	30	25.4	9.3	27.8	8.7	11.9	18.7
121	Male 59	29	25.1	9.2	26.5	8.2	12.2	16.4
121	Female66	36	24.0	6.8	25.4	6.8	13.8	18.2
122	Female67	32	25.3	6.3	23.4	6.4	13.9	17.2
122	Female65	32	24.4	6.9	24.6	5.4	12.6	17.0
122	Female71	40	26.9	7.6	25.0	7.3	14.0	17.7
122	Female57	31	19.9	5.8	20.9	5.8	12.9	15.1
122	Female57	32	20.5	5.6	20.4	4.1	11.3	15.7
122	Female61	34	23.6	6.6	22.5	6.0	11.9	16.9
122	Female57	27	21.4	5.3	23.3	5.5	11.5	15.5
122	Female64	36	25.4	6.7	23.7	6.6	12.4	15.5

160	Male	51	28	21.7	5.8	22.5	5.9	10.8	14.3
160	Male	53	33	21.5	5.9	21.8	6.0	11.7	13.9
160	Male	56	30	24.9	5.7	25.1	6.3	11.2	14.4
160	Male	51	32	23.9	8.0	21.8	6.5	11.1	13.8
160	Male	56	33	24.5	7.9	26.0	7.6	12.7	14.6
160	Female	70	42	25.2	6.9	25.2	5.7	12.2	16.1
160	Female	63	38	23.6	6.3	23.1	4.9	12.8	15.6
165	Female	61	37	22.1	4.8	23.3	5.0	11.3	15.2
177	Female	58	33	22.6	8.1	22.8	5.0	12.0	15.0
186	Male	68	36	29.9	12.3	32.0	11.1	14.9	20.6
196	Male	65	34	28.5	8.0	28.3	7.7	14.5	19.0
196	Male	68	39	28.3	8.3	29.0	9.0	14.5	18.8
196	Male	60	33	26.4	7.5	27.1	8.4	12.8	18.8
196	Male	64	35	26.8	7.3	27.7	8.0	13.1	17.1
196	Male	60	35	25.5	7.3	26.7	6.9	13.6	17.1
196	Male	56	31	23.2	7.1	23.7	7.8	12.0	16.8
196	Male	60	34	23.8	7.5	26.9	7.5	12.7	17.3
196	Male	58	33	24.0	7.9	24.5	9.7	12.3	17.7
196	Male	66	33	26.6	8.5	26.1	8.8	10.6	13.3
196	Male	52	29	21.6	7.4	23.5	7.3	11.0	17.3
196	Male	60	34	24.1	7.9	26.4	7.7	12.4	16.8
196	Male	57	34	24.1	7.6	25.1	8.1	12.8	16.8
196	Female	75	42	26.5	7.7	27.4	9.0	14.9	20.7
196	Female	65	39	23.3	6.2	24.2	5.3	13.2	17.0
202	Male	56	32	23.4	6.0	25.5	8.5	11.8	16.7

202	Female	65	39	26.4	6.9	27.4	6.4	13.6	20.3
203	Male	58	31	25.3	7.4	26.5	7.9	12.6	17.6
216	Female	62	38	24.7	6.4	25.8	6.1	17.0	17.6
216	Female	62	38	24.7	6.4	25.8	6.1	17.0	17.6
217	Male	69	39	27.9	7.1	27.7	8.7	14.2	18.6
217	Male	55	31	24.5	8.5	26.0	9.8	11.1	15.8
217	Male	64	34	28.0	9.3	26.8	8.4	12.7	18.2
217	Male	60	34	24.6	7.0	27.5	7.6	13.1	16.9
217	Male	53	30	21.4	6.9	23.8	6.7	11.1	17.1
217	Male	66	37	27.9	8.1	28.6	7.8	13.5	18.9
217	Male	67	39	30.6	8.6	29.5	8.4	13.5	18.4
217	Male	66	39	30.4	9.6	32.0	11.1	15.2	18.2
217	Male	63	33	26.8	8.2	27.9	9.0	13.3	17.5
217	Male	55	37	27.2	7.3	26.2	8.6	12.7	18.3
217	Male	63	37	26.8	8.7	28.3	8.9	13.7	19.6
217	Male	59	35	25.6	7.5	25.3	7.2	12.1	17.8
217	Female	62	37	25.5	7.4	23.2	5.8	13.0	19.6
217	Female	68	40	27.1	8.2	25.9	6.8	13.4	18.1
217	Female	68	40	26.5	6.8	25.5	6.2	14.0	17.5
217	Female	69	37	27.0	7.1	28.3	7.1	13.8	19.2
217	Female	70	40	27.9	8.0	24.3	5.8	14.0	19.9
217	Female	70	41	28.8	7.5	26.9	6.5	13.5	20.0
217	Female	70	39	26.7	7.3	28.1	6.5	13.9	19.9
217	Female	71	36	29.4	8.1	27.3	6.9	13.8	17.3
217	Female	68	37	24.0	5.4	25.9	7.3	13.8	18.9

221	Male	67	37	28.6	7.6	29.5	7.9	13.4	18.5
224	Male	51	35	25.5	7.3	26.5	7.9	12.4	18.4
224	Male	50	34	24.6	7.1	25.4	7.9	13.5	18.6
224	Female	75	45	25.3	8.4	26.6	5.8	14.2	19.6
224	Female	72	42	23.9	6.2	24.9	6.4	13.6	19.5
225	Female	68	39	24.6	8.5	24.8	7.7	13.7	18.3
244	Female	63	36	17.5	6.1	21.5	5.7	13.1	17.5
244	Female	63	37	23.1	5.9	22.2	6.0	14.1	17.8
250	Male	59	32	26.2	6.9	25.3	10.1	12.9	18.4
250	Male	60	34	24.0	7.3	25.8	9.3	12.1	16.7
250	Male	55	31	24.0	8.2	26.3	9.1	11.8	14.6
250	Male	60	32	24.6	7.8	26.0	7.7	11.6	17.2
250	Female	63	36	23.4	6.8	25.6	5.9	12.1	16.1
250	Female	68	35	21.9	6.3	23.7	5.7	12.9	16.1
250	Female	69	34	25.0	7.3	25.3	6.4	13.3	16.8
250	Female	69	35	24.9	9.0	24.9	7.0	13.8	18.1
250	Female	67	36	26.1	6.9	25.1	5.1	14.4	17.6
250	Female	56	30	20.7	5.9	21.4	6.1	12.1	15.8
250	Female	68	39	24.7	6.5	24.5	7.7	13.8	16.8
354	Male	58	28	25.6	8.7	26.0	7.8	11.5	15.5

Triturus pygmaeus

4	Male	55	31	23.6	6.3	22.4	8.2	12.0	17.9
4	Male	52	29	21.6	6.0	22.4	6.4	11.1	16.2

4	Male	49	28	17.4	6.3	18.2	6.5	11.0	14.8
4	Male	60	34	19.4	5.5	21.0	6.2	12.5	16.9
4	Male	52	26	19.4	6.6	22.0	6.6	10.3	15.9
4	Male	49	25	20.1	6.0	18.0	8.2	10.7	14.0
4	Male	47	25	18.9	4.9	20.2	5.4	9.9	14.1
4	Male	48	24	20.0	5.8	20.6	7.1	10.7	14.7
4	Male	50	27	20.0	6.1	20.5	6.4	10.9	14.7
4	Male	48	25	18.4	5.6	19.9	6.0	10.6	15.0
4	Female	60	34	19.4	5.5	21.0	6.2	12.5	16.9
4	Female	54	30	19.8	6.1	20.3	6.2	10.3	14.1
4	Female	54	30	19.4	5.4	19.7	6.0	10.6	15.0
4	Female	59	33	21.6	5.8	21.4	6.0	12.0	15.9
4	Female	62	35	22.4	6.3	21.2	6.5	12.0	16.8
4	Female	52	29	17.3	5.5	19.6	5.9	10.8	14.5
4	Female	56	30	18.4	5.4	20.2	5.3	13.0	16.7
4	Female	53	30	19.4	6.0	19.5	5.8	11.2	14.9
4	Female	52	29	18.5	5.8	19.9	5.8	10.5	15.0
4	Female	60	32	22.2	6.8	23.3	7.3	11.9	16.1
4	Female	52	27	20.7	6.2	21.9	7.7	11.2	16.2
4	Female	55	28	20.4	5.6	20.4	4.9	12.0	16.1
4	Female	55	31	20.0	5.4	20.1	5.6	11.4	16.4
4	Female	55	31	19.5	6.0	19.5	5.4	11.4	16.3
4	Female	54	29	18.3	5.7	19.0	5.8	12.1	15.6
4	Female	59	30	20.8	6.3	21.5	6.3	11.4	15.8
4	Female	59	34	21.2	5.3	18.5	5.3	11.7	16.0

4	Female	64	40	21.0	5.5	19.6	6.4	13.0	18.1
4	Female	59	34	21.5	6.5	21.8	6.6	12.9	15.5
4	Female	60	33	19.1	6.0	18.5	5.4	12.8	16.7
4	Female	50	29	20.2	6.9	21.5	7.4	11.2	14.4
4	Female	52	30	19.5	7.2	20.9	7.4	11.2	15.0
5	Male	50	24	21.2	6.7	22.0	8.3	11.3	14.6
5	Male	51	27	20.6	6.7	20.3	6.6	10.3	15.6
5	Male	47	24	20.4	5.6	21.5	7.0	10.5	15.4
5	Female	59	31	20.8	6.6	24.2	6.7	12.8	15.7
10	Male	49	28	20.6	5.6	19.8	7.2	10.5	15.6
10	Male	51	28	21.5	6.0	22.7	7.1	11.0	13.9
10	Male	54	30	22.7	6.6	23.0	8.2	11.7	15.2
10	Male	58	31	23.0	7.9	25.0	7.7	11.3	16.9
10	Male	54	26	21.3	7.1	21.8	8.0	10.5	14.5
10	Male	52	29	19.6	6.1	21.7	6.7	11.5	16.1
10	Male	55	30	22.6	6.9	22.3	5.2	11.2	16.3
10	Male	55	32	23.4	6.9	22.7	8.5	11.4	11.6
10	Male	55	30	23.6	7.4	24.0	8.2	11.9	15.6
10	Male	44	21	18.3	5.0	16.5	7.0	9.1	11.2
10	Female	65	38	25.8	7.1	22.2	6.6	13.6	16.4
10	Female	60	35	20.5	6.7	22.1	6.4	11.9	18.1
10	Female	60	35	21.0	6.0	21.2	5.7	12.0	16.1
10	Female	56	31	22.2	6.3	19.5	5.6	10.9	16.5
10	Female	64	30	20.7	7.4	20.6	6.5	10.8	15.3
29	Male	48	26	19.5	6.0	19.1	6.6	10.5	14.1

29	Male	49	28	18.2	5.7	20.0	7.2	11.0	15.1
29	Male	55	32	21.0	6.1	20.4	6.0	11.1	17.0
29	Male	48	27	18.4	5.0	17.9	6.6	10.3	14.0
29	Male	48	26	18.9	6.5	20.7	7.0	10.2	14.6
29	Male	50	31	20.1	7.0	18.1	8.1	10.9	16.0
29	Male	52	27	22.1	7.5	24.1	9.1	10.7	16.0
29	Male	45	25	18.4	5.3	18.1	6.5	9.7	14.2
29	Male	50	26	20.0	6.6	20.5	8.3	11.1	16.0
29	Male	46	24	17.0	5.2	17.2	7.0	9.5	13.6
29	Male	45	24	18.0	6.0	17.1	7.3	9.5	14.0
29	Male	49	25	17.7	5.7	18.1	7.2	10.0	14.5
29	Male	55	32	21.2	6.7	24.0	9.2	12.0	17.1
29	Male	55	27	21.0	6.9	21.3	8.7	10.0	15.0
29	Male	46	26	19.7	5.2	19.8	7.4	10.0	15.0
29	Male	50	29	22.0	6.5	22.3	7.6	9.5	14.0
29	Female	53	31	19.7	6.1	19.5	6.1	11.5	16.0
29	Female	55	31	20.0	5.6	20.1	5.2	11.0	15.5
29	Female	54	31	20.1	5.5	18.4	6.0	11.3	17.0
29	Female	56	31	20.0	6.1	19.0	6.0	11.1	17.1
29	Female	51	26	18.4	6.0	17.7	6.5	10.0	15.0
29	Female	55	31	18.5	6.1	20.0	6.0	11.3	15.6
29	Female	55	30	20.0	6.0	19.6	6.0	10.6	16.5
30	Male	43	25	18.0	7.1	23.5	9.0	9.4	14.7
30	Male	50	29	18.6	6.6	20.0	7.0	10.0	14.6
30	Male	44	27	18.3	4.2	20.2	6.3	9.6	12.8

30	Male	47	29	19.3	5.8	22.6	6.7	10.1	14.4
30	Female	49	27	15.6	5.5	17.0	7.0	9.6	14.0
30	Female	48	30	16.6	4.7	19.3	5.3	10.0	14.1
30	Female	45	28	16.9	4.7	17.2	5.5	8.8	13.2
30	Female	48	28	17.1	4.8	17.9	5.9	9.0	15.0
30	Female	53	32	19.5	4.9	19.5	6.3	11.9	16.0
30	Female	46	26	16.5	5.0	17.0	5.4	9.3	13.3
30	Female	52	31	17.2	5.0	16.0	5.6	10.4	15.0
30	Female	54	30	19.0	5.2	18.3	5.5	11.0	15.0
30	Female	49	30	18.1	6.0	17.0	5.3	10.0	15.2
32	Male	50	29	20.0	6.1	20.5	8.0	10.6	15.2
32	Male	50	27	21.0	7.0	20.0	7.1	10.5	16.3
32	Male	54	30	20.0	6.0	21.2	8.0	10.3	15.7
32	Male	62	35	20.2	6.1	21.1	9.2	11.2	15.7
32	Male	60	35	19.2	7.0	21.4	6.5	9.6	15.7
32	Male	49	28	19.6	5.7	18.9	8.6	10.0	15.4
32	Female	58	31	19.1	5.6	19.1	5.7	11.1	15.6
32	Female	59	31	21.0	5.5	19.2	5.8	10.5	15.7
32	Female	61	35	19.1	5.6	18.3	6.2	10.7	18.2
32	Female	60	32	22.1	6.2	20.0	6.4	11.1	17.8
32	Female	59	35	21.8	6.8	22.4	7.1	11.3	17.2
32	Female	55	31	20.0	6.0	19.1	6.7	10.5	15.5
32	Female	58	34	19.6	5.5	18.7	5.9	11.0	17.1
32	Female	54	31	17.8	5.5	17.2	5.9	11.1	15.6
32	Female	58	34	20.2	5.9	20.7	5.9	10.7	16.9

32	Female	59	32	20.5	6.5	19.4	6.4	11.4	17.1
32	Female	56	32	18.4	5.6	18.0	6.2	10.7	16.1
32	Female	59	34	20.2	5.1	20.2	6.5	10.5	17.3
32	Female	50	28	17.0	5.0	18.2	6.1	10.0	14.4
32	Female	56	31	19.1	5.8	17.1	5.4	11.0	16.4
32	Female	71	45	21.2	7.3	20.5	6.7	12.6	19.4
32	Female	55	35	20.7	7.8	18.4	7.1	11.0	15.3
33	Male	50	27	22.5	7.1	21.9	8.4	10.7	15.2
33	Male	49	25	18.7	6.2	18.3	7.4	9.7	15.8
33	Male	60	42	19.1	6.4	19.7	6.6	12.3	16.4
33	Female	59	33	20.0	6.4	21.0	5.8	11.1	16.8
33	Female	55	33	20.2	7.3	19.6	8.0	10.9	15.1
33	Female	61	35	22.2	7.9	22.4	8.2	11.0	16.0
56	Male	55	30	22.2	7.4	20.6	6.0	11.6	17.8
56	Male	50	35	21.0	7.4	18.1	7.2	11.0	12.1
56	Male	54	31	23.6	7.4	21.5	7.2	12.1	15.3
56	Male	55	32	20.9	6.1	21.6	7.3	10.2	12.1
56	Male	56	33	22.1	6.5	21.4	7.2	11.2	14.6
56	Male	54	33	20.0	6.2	18.1	7.3	10.2	11.4
56	Male	51	30	20.4	6.5	22.0	7.2	9.8	12.0
56	Female	50	30	20.6	7.0	20.0	7.4	10.6	15.7
56	Female	59	31	20.0	8.1	23.0	8.9	10.3	15.1
56	Female	55	30	18.7	6.4	21.0	8.6	10.0	14.8
56	Female	51	30	21.2	7.7	23.2	8.1	11.0	13.4
56	Female	52	30	21.3	7.5	22.3	9.1	10.1	14.8

56	Female	60	34	22.4	8.7	22.7	10.5	12.0	17.5
56	Female	58	29	21.3	7.4	20.4	7.1	10.4	14.1
56	Female	59	28	19.5	8.6	19.9	9.1	11.3	12.5
56	Female	45	27	21.0	9.0	21.2	8.7	10.3	10.5
56	Female	49	29	20.0	7.5	18.0	8.1	10.1	14.0
56	Female	57	28	18.5	7.1	20.0	8.7	10.1	14.3
56	Female	50	31	21.7	8.0	19.1	8.9	10.3	15.0
56	Female	48	28	19.2	5.7	20.0	9.1	9.9	14.1
56	Female	48	27	21.0	7.4	20.0	9.0	10.5	12.8
56	Female	61	36	20.3	7.1	19.0	6.0	12.2	15.0
65	Male	50	30	21.4	9.9	22.1	8.7	10.1	12.4
65	Male	48	27	20.5	8.0	19.9	9.8	10.0	11.6
65	Male	41	20	15.7	6.0	17.0	7.2	10.0	12.0
65	Male	47	28	19.3	9.0	21.4	9.1	10.0	14.5
65	Male	47	25	18.6	8.0	19.0	9.0	10.0	13.0
65	Male	50	26	20.0	9.6	18.4	10.2	10.3	14.0
65	Male	50	30	22.9	8.3	21.8	9.7	11.2	14.4
65	Male	43	25	18.5	8.0	18.4	7.0	8.8	13.3
65	Male	49	31	18.0	6.0	20.0	8.4	8.6	10.7
65	Male	43	32	20.6	7.7	20.5	8.0	9.8	11.3
65	Male	52	31	23.2	9.7	23.7	10.4	10.2	16.6
65	Male	48	26	19.2	7.4	16.5	10.0	10.0	12.3
65	Male	40	23	19.0	9.2	22.0	10.7	9.5	14.0
65	Male	40	23	18.2	9.5	22.5	10.7	10.0	15.0
65	Male	40	20	18.2	8.5	21.2	9.6	9.0	13.0

65	Male	42	25	19.4	8.2	19.3	9.9	9.3	11.5
65	Male	45	25	20.3	6.7	19.4	8.2	9.9	13.2
65	Male	50	25	21.4	10.3	22.8	10.6	10.2	14.7
65	Male	46	25	21.2	10.2	21.5	10.1	9.2	14.0
65	Male	46	25	21.6	9.7	21.2	9.3	9.4	13.7
65	Male	45	26	19.5	9.3	19.4	9.0	9.0	12.5
65	Male	45	27	20.9	10.0	21.0	10.2	9.0	13.4
65	Male	47	25	20.7	9.0	20.5	9.3	9.1	13.7
65	Male	50	30	20.4	9.3	22.1	9.4	9.7	15.0
65	Male	42	23	18.3	8.0	19.3	9.5	9.0	13.6
65	Male	46	26	20.0	9.6	20.0	9.5	9.2	13.5
65	Female	56	32	21.2	8.5	20.3	8.0	11.6	15.0
65	Female	50	35	18.7	7.5	19.0	7.3	11.0	14.8
65	Female	50	25	18.1	6.4	17.0	7.7	9.9	12.6
65	Female	55	34	21.0	8.2	22.3	9.1	9.9	13.3
65	Female	55	32	18.7	7.6	22.2	9.2	11.6	16.2
66	Male	50	28	20.6	5.9	24.7	6.8	11.1	15.9
66	Male	53	29	22.0	7.4	21.5	8.0	12.4	15.5
66	Male	48	25	20.5	5.9	20.1	6.5	10.4	14.8
66	Male	49	28	19.6	5.6	22.5	6.4	10.7	15.4
66	Male	52	27	22.2	6.6	23.0	7.4	11.5	16.4
66	Male	48	24	20.7	6.4	21.6	8.4	10.7	15.9
66	Male	50	26	21.6	5.6	22.6	6.5	10.9	16.1
66	Male	50	25	20.9	6.5	21.1	7.9	11.2	15.2
66	Male	55	25	21.2	6.1	21.8	7.3	11.8	16.4

66	Male	52	25	20.7	6.0	22.8	6.9	10.9	14.7
66	Male	54	26	20.0	6.1	21.0	7.8	10.7	16.3
66	Female	54	25	20.3	5.1	19.4	5.6	11.2	16.7
66	Female	60	36	21.6	6.5	20.8	6.5	12.9	16.0
66	Female	58	32	20.1	5.9	21.1	5.8	11.9	15.2
66	Female	57	30	20.3	5.2	19.8	5.4	10.9	15.7
66	Female	55	29	18.3	5.2	19.7	5.6	11.3	14.6
66	Female	55	29	19.2	5.5	19.5	6.0	11.2	16.7
67	Male	42	20	17.4	3.9	17.3	5.1	9.1	13.9
67	Male	45	22	15.8	4.9	18.1	5.9	9.8	13.9
67	Male	46	24	19.5	5.5	20.7	5.9	10.5	15.4
67	Male	52	25	21.5	6.6	22.4	7.3	11.4	15.3
67	Male	50	24	21.0	5.8	21.2	6.0	10.3	13.8
67	Male	42	23	17.7	4.9	17.5	5.1	9.5	13.7
67	Male	46	24	18.3	4.9	18.0	5.9	9.7	14.4
67	Male	45	22	19.4	4.9	19.6	6.6	10.1	15.0
67	Male	47	24	20.7	5.0	20.4	5.6	10.5	14.7
67	Male	46	22	19.7	6.3	20.8	6.0	9.7	14.3
67	Male	44	21	18.7	4.8	19.7	5.6	9.7	14.0
67	Male	47	24	20.7	5.5	21.2	6.4	9.3	12.7
67	Male	49	26	19.7	5.5	21.6	7.2	10.6	13.6
67	Male	52	30	19.9	6.9	21.7	6.7	10.7	16.4
67	Female	48	24	17.5	4.9	17.0	4.4	10.5	15.1
67	Female	47	22	17.2	5.3	16.7	5.1	10.6	14.6
67	Female	52	29	19.3	6.1	19.0	5.5	10.3	15.7

67	Female	55	28	20.4	4.9	19.4	4.6	11.5	16.2
67	Female	58	24	17.9	5.5	19.2	5.4	10.8	14.8
67	Female	50	26	19.5	5.0	18.6	5.4	10.0	14.5
67	Female	53	29	20.0	6.1	20.0	5.5	10.5	15.5
67	Female	47	22	20.1	4.7	17.3	4.7	9.8	13.8
67	Female	56	30	20.3	4.7	20.8	5.7	11.6	15.8
67	Female	46	24	17.7	5.2	17.3	4.4	9.7	14.2
67	Female	51	28	19.2	5.1	19.4	4.9	11.0	15.0
67	Female	46	23	17.8	4.5	17.4	4.7	10.0	13.0
67	Female	55	29	18.9	4.8	20.7	5.2	11.6	14.1
67	Female	51	29	18.6	4.7	18.8	5.2	10.2	14.4
67	Female	47	25	18.2	4.6	18.8	5.6	10.9	15.5
67	Female	50	26	18.3	5.1	17.7	5.3	10.8	14.0
67	Female	49	25	18.3	5.2	17.0	4.4	9.5	14.6
67	Female	47	26	17.0	4.7	17.7	4.2	9.8	14.0
67	Female	48	29	16.2	4.4	17.4	4.5	9.9	14.1
67	Female	49	26	17.7	5.6	19.1	4.4	9.8	13.0
67	Female	51	26	18.1	4.0	19.9	5.2	11.3	15.6
67	Female	47	26	16.9	4.5	16.5	4.9	10.1	13.9
67	Female	54	26	20.4	5.6	19.7	5.0	10.5	15.7
67	Female	52	27	18.3	5.2	19.0	6.1	11.5	13.9
67	Female	49	26	18.9	5.2	18.5	4.4	10.3	15.3
67	Female	52	29	19.9	5.3	19.7	4.9	11.2	15.5
68	Female	62	34	20.9	5.6	22.1	5.7	13.5	16.3
84	Male	48	24	17.4	6.2	18.3	5.9	10.3	14.0

84	Male	48	25	18.5	5.8	18.7	7.1	9.8	14.3
84	Male	51	26	18.0	5.0	20.1	7.1	11.2	14.9
84	Male	49	28	17.1	5.5	18.3	5.9	10.3	15.9
84	Male	48	25	18.1	7.0	18.9	6.0	10.5	16.0
84	Male	48	26	17.8	5.5	19.3	6.5	10.5	15.3
84	Male	52	26	18.5	5.2	20.2	7.4	11.4	15.3
84	Male	50	25	17.5	5.5	18.4	6.6	10.8	16.0
84	Male	53	26	21.5	6.2	20.8	7.2	11.0	15.7
84	Male	50	25	21.0	5.0	22.8	5.4	10.8	14.4
84	Male	48	27	20.6	6.1	20.5	5.7	11.8	15.9
84	Male	50	26	21.3	5.7	21.6	6.6	11.2	14.9
84	Male	50	26	19.1	6.2	20.4	6.2	11.3	15.4
84	Male	49	27	19.7	5.9	21.3	6.5	10.3	15.7
84	Male	53	27	20.6	5.6	23.1	7.3	10.7	15.6
84	Male	52	28	18.9	6.3	23.0	6.7	10.5	15.1
84	Male	51	26	20.8	6.1	21.8	7.5	10.7	15.0
84	Male	52	29	21.1	7.0	20.1	6.1	11.5	15.7
84	Female	55	29	19.5	5.8	20.0	5.7	12.2	16.8
84	Female	53	30	17.5	5.2	18.4	5.9	10.2	13.7
84	Female	50	28	19.5	4.7	19.8	4.8	10.4	13.6
84	Female	55	29	18.8	5.8	19.8	5.3	11.4	14.5
84	Female	61	31	21.0	5.5	21.5	6.6	12.0	16.6
84	Female	58	31	20.6	5.7	22.2	5.8	11.4	15.5
84	Female	56	32	19.3	5.3	19.4	5.4	11.4	16.4
84	Female	59	31	21.5	4.1	23.1	6.7	12.6	17.1

84	Female57	31	18.8	5.6	19.2	4.7	11.5	15.2
84	Female58	33	22.4	5.2	19.9	5.9	12.5	16.5
84	Female54	30	19.3	5.0	18.4	6.3	11.5	17.1
84	Female61	34	19.7	5.5	18.2	5.2	12.5	15.8
84	Female59	31	20.7	7.3	20.3	5.7	12.3	17.3
84	Female53	29	18.4	5.1	18.3	5.9	11.2	15.2
84	Female57	30	18.3	5.6	21.7	5.8	10.9	16.6
84	Female60	34	22.1	6.5	22.3	6.5	12.3	12.5
84	Female58	30	19.2	5.4	19.7	5.6	11.4	16.0
84	Female54	31	20.8	6.2	18.8	6.2	11.3	15.0
84	Female56	31	20.0	5.1	21.0	6.0	12.0	16.0
84	Female55	31	18.5	5.3	17.7	5.4	10.5	15.9
84	Female58	30	16.7	5.5	20.5	5.1	12.1	17.8
84	Female55	30	18.7	5.3	18.8	5.3	11.3	16.0
84	Female56	29	19.5	5.4	20.9	5.4	10.9	16.6
84	Female57	29	18.2	5.4	20.4	6.1	10.7	16.0
84	Female58	35	21.1	5.6	22.1	6.4	11.9	17.3
84	Female59	33	19.7	6.1	18.8	5.0	12.2	17.5
87	Male 56	30	22.0	6.6	23.3	7.1	11.9	16.5
87	Female66	35	21.7	6.2	22.9	6.3	13.3	17.2
87	Female56	30	19.8	4.5	21.3	5.8	11.2	14.6
87	Female58	32	22.3	7.2	23.5	8.3	11.7	16.5
88	Male 48	25	17.3	5.2	18.7	6.0	9.7	14.6
88	Male 53	25	19.7	6.5	21.5	7.4	10.8	15.8
88	Female52	26	19.1	6.3	18.1	6.3	10.9	15.8

90	Male	54	29	18.1	6.4	22.1	7.5	10.9	16.8
90	Male	49	24	18.3	6.5	20.4	6.4	9.9	14.5
90	Male	50	28	18.4	5.4	19.7	6.1	9.5	14.6
90	Male	49	25	18.4	5.5	20.4	5.8	10.4	15.6
90	Male	48	25	19.2	5.7	19.3	6.8	10.3	14.1
90	Male	55	25	20.5	5.6	22.8	7.1	10.4	14.2
90	Male	55	29	21.1	6.6	22.8	7.7	10.4	16.2
90	Male	56	30	21.3	6.4	20.8	7.0	11.8	16.7
90	Male	50	27	21.5	6.3	21.7	6.8	10.3	14.6
90	Male	53	29	21.6	6.2	24.2	7.7	11.3	15.8
90	Male	55	29	21.6	7.6	23.1	7.8	11.1	16.4
90	Male	54	29	22.0	6.7	23.0	7.0	11.3	16.2
90	Male	55	29	22.1	7.4	23.4	6.8	11.1	16.0
90	Male	58	31	22.2	5.6	24.5	7.4	11.8	17.1
90	Male	55	29	22.2	6.3	23.6	7.7	12.5	16.4
90	Male	59	30	22.4	6.3	22.4	7.5	11.5	18.2
90	Male	60	29	24.6	7.8	25.4	8.8	12.0	17.3
90	Female	53	28	19.6	5.8	20.5	5.7	10.4	13.4
90	Female	65	33	25.2	7.1	24.8	7.5	13.3	20.2
90	Female	66	38	22.6	6.3	22.4	6.0	12.8	18.8
90	Female	61	34	20.7	6.1	21.9	6.3	12.2	17.1
90	Female	65	36	21.7	6.5	21.4	6.6	13.1	17.6
90	Female	57	31	19.4	6.1	20.5	6.2	10.8	16.0
90	Female	60	34	19.3	6.3	22.0	5.3	13.1	17.4
90	Female	56	30	20.1	6.6	20.2	6.0	11.6	15.5

90	Female	67	38	22.4	7.0	21.8	6.1	12.4	16.6
90	Female	68	39	22.5	6.1	22.9	6.0	14.1	16.5
90	Female	64	39	21.7	6.9	21.7	6.2	11.9	17.7
90	Female	63	39	21.1	5.8	21.2	6.9	12.3	15.4
90	Female	60	36	21.6	6.5	22.3	5.8	11.8	16.6
90	Female	56	29	18.9	7.5	19.9	5.9	11.2	15.5
90	Female	59	37	20.5	6.2	21.5	5.8	11.2	16.2
90	Female	58	37	19.5	5.8	19.7	5.5	12.1	15.8
90	Female	64	39	20.9	7.6	22.8	7.0	12.1	17.5
93	Male	52	28	20.5	6.0	20.8	7.7	10.6	15.1
93	Male	49	24	18.2	4.7	18.8	6.5	9.9	14.3
93	Male	50	27	20.0	7.6	22.0	6.7	11.2	15.5
93	Male	51	25	20.0	6.0	20.8	7.7	10.3	14.9
93	Female	60	33	19.7	5.3	22.2	5.5	11.9	16.0
93	Female	55	28	19.4	6.4	20.7	6.7	11.4	16.1
93	Female	59	35	18.3	5.4	19.7	5.3	11.3	14.7
93	Female	56	29	18.3	4.8	20.8	5.1	10.7	16.0
93	Female	52	27	18.4	5.5	19.7	5.7	11.4	14.9
93	Female	60	33	22.8	6.3	23.3	7.3	12.1	17.5
93	Female	55	29	18.2	5.7	20.9	6.1	10.8	15.2
93	Female	56	35	18.2	5.9	20.2	5.0	11.1	15.9
93	Female	52	27	18.4	5.8	18.7	6.8	10.0	14.7
93	Female	58	29	20.0	7.1	21.3	7.6	10.8	15.8
94	Male	52	26	21.3	6.5	21.1	7.4	10.0	14.4
94	Male	47	24	16.6	4.8	18.8	5.9	10.0	13.7

94	Male	50	24	21.8	6.0	22.4	6.5	10.5	15.7
94	Male	53	29	19.0	6.0	20.1	6.2	10.6	15.0
94	Male	48	24	18.4	5.1	17.6	7.2	9.9	14.4
94	Male	47	24	20.8	5.7	19.3	6.4	10.6	13.4
94	Male	45	23	17.6	5.5	20.0	7.5	9.7	13.0
94	Male	48	27	18.3	5.8	21.2	6.8	11.2	13.7
94	Male	46	24	18.8	5.4	21.2	6.0	11.2	13.0
94	Male	49	24	19.7	6.6	21.7	6.6	11.1	14.8
94	Female	52	30	18.3	5.4	17.8	4.6	10.1	15.0
94	Female	56	33	21.7	5.7	20.6	5.6	12.1	15.4
94	Female	55	30	19.4	6.0	19.6	5.3	11.1	13.5
94	Female	56	30	20.7	5.4	20.6	5.5	11.6	15.7
94	Female	58	31	20.2	6.3	21.9	6.3	11.3	14.4
94	Female	55	29	18.7	5.7	19.6	4.9	11.3	14.6
94	Female	45	23	15.2	3.6	17.4	4.2	9.8	13.5
94	Female	46	25	16.5	4.3	16.2	4.6	10.0	13.5
94	Female	45	24	17.5	4.7	17.4	4.3	10.2	13.5
94	Female	55	30	19.2	5.7	20.0	6.3	11.2	15.3
94	Female	56	30	19.7	5.4	18.4	5.4	11.6	16.7
94	Female	55	29	19.1	5.5	20.8	6.1	11.4	16.0
104	Male	47	26	19.5	5.5	20.7	6.4	9.5	14.7
104	Male	58	26	19.7	5.8	20.5	6.6	9.5	14.3
104	Male	48	25	18.7	5.4	20.2	6.3	9.9	14.4
104	Male	50	26	20.5	6.5	20.0	7.1	9.5	14.5
104	Male	54	29	21.9	7.2	23.6	7.8	11.2	14.5

104	Male	54	30	21.5	6.7	22.8	6.7	10.5	15.1
104	Male	51	30	20.1	5.2	21.7	7.1	10.3	14.8
104	Male	52	25	21.5	6.7	21.9	7.8	10.5	15.8
104	Female	53	31	21.3	6.0	20.3	6.2	10.8	15.1
104	Female	55	29	21.9	6.0	22.2	6.5	10.5	14.8
104	Female	59	34	20.6	5.4	20.6	6.0	11.2	15.9
104	Female	59	34	21.7	6.7	21.5	5.9	11.8	15.6
104	Female	52	28	18.4	5.1	17.3	5.2	9.4	13.5
104	Female	56	32	21.0	6.0	21.5	5.6	11.2	16.5
104	Female	69	31	21.1	5.8	23.8	7.1	12.5	15.8
104	Female	57	34	21.3	5.9	20.3	6.3	10.7	14.9
104	Female	59	35	21.0	5.0	20.5	4.7	11.3	15.6
104	Female	54	30	19.2	6.3	19.8	6.0	10.8	16.4
104	Female	59	33	20.3	5.8	21.8	6.5	11.6	15.9
104	Female	50	29	18.7	5.2	18.5	5.0	10.6	13.9
104	Female	58	33	19.3	5.6	20.2	5.6	11.4	16.7
104	Female	54	27	20.5	6.4	20.3	6.0	10.3	14.5
107	Male	53	29	19.7	7.8	17.5	8.5	11.4	14.4
107	Male	53	32	19.7	7.0	20.7	7.5	9.6	15.2
107	Male	48	31	18.3	6.4	18.4	6.1	11.8	13.3
107	Male	46	28	14.9	4.8	16.8	6.1	11.0	13.4
107	Male	52	31	19.0	6.4	18.1	6.6	10.5	15.2
107	Male	49	27	18.8	6.5	16.6	6.1	10.3	13.6
107	Male	53	27	21.3	6.5	21.0	7.6	11.8	14.4
107	Male	46	24	16.6	6.1	15.7	6.8	11.2	13.5

107	Male	56	31	22.7	6.4	24.0	7.4	11.1	15.1
107	Male	49	26	20.8	6.2	21.1	6.8	9.8	14.5
107	Male	51	30	20.2	5.8	21.7	5.7	10.2	14.8
107	Male	55	30	19.6	5.8	21.8	6.3	10.7	15.2
107	Male	45	25	17.7	5.4	19.6	6.0	10.1	13.5
107	Male	57	28	21.0	7.0	21.4	6.1	11.3	15.1
107	Male	46	26	17.1	5.3	19.0	6.3	9.5	12.8
107	Female	61	37	21.5	6.4	21.3	6.4	12.3	16.8
107	Female	62	32	19.0	5.4	18.4	6.1	13.6	16.3
107	Female	55	28	18.8	4.6	15.8	6.4	13.5	15.1
107	Female	61	33	21.9	5.1	19.8	6.5	12.8	16.1
107	Female	59	27	17.1	5.6	18.3	6.3	13.4	17.0
107	Female	70	47	23.0	9.7	22.5	7.1	15.4	18.5
107	Female	57	35	19.9	5.2	20.0	4.8	11.4	15.4
107	Female	63	38	21.3	5.5	21.2	5.4	12.5	16.4
107	Female	64	37	20.8	5.7	22.2	6.0	12.2	16.7
107	Female	62	32	20.6	7.4	20.7	5.7	12.9	17.9
107	Female	54	30	19.0	5.9	18.7	6.0	10.3	15.5
107	Female	55	32	18.2	5.2	18.3	5.1	10.5	16.3
107	Female	51	29	18.2	5.8	19.2	4.9	10.9	13.9
107	Female	53	27	16.4	5.0	18.5	6.6	12.7	14.9
107	Female	62	37	21.4	5.9	22.9	5.8	12.0	17.5
107	Female	54	31	17.3	4.5	17.6	5.4	11.3	14.3
107	Female	54	34	18.1	6.9	17.0	6.3	12.9	16.0
107	Female	58	37	21.1	6.9	19.4	6.2	13.5	15.0

107	Female	63	40	21.7	5.9	21.3	5.5	12.9	17.8
107	Female	54	31	17.4	4.9	16.8	5.6	12.1	15.1
107	Female	64	40	21.3	7.0	21.7	6.5	12.4	16.8
107	Female	56	35	18.5	4.5	19.5	4.9	10.4	15.2
107	Female	63	37	21.4	5.8	21.0	6.3	12.4	17.3
107	Female	58	35	18.4	5.4	18.0	5.6	12.7	15.4
107	Female	64	36	19.8	4.3	22.1	6.5	11.1	17.0
134	Male	52	33	21.1	6.0	21.5	6.9	10.8	15.8
134	Male	53	32	20.3	5.6	21.0	6.5	10.8	14.0
134	Female	54	35	20.5	6.1	20.5	6.0	12.1	15.5
134	Female	59	34	19.5	5.0	19.5	6.1	11.2	15.6
134	Female	54	36	17.8	5.4	19.3	5.5	10.6	15.8
134	Female	59	37	20.1	6.6	20.7	5.4	10.8	16.6
134	Female	60	35	20.0	5.8	20.5	5.3	10.5	15.1
134	Female	56	32	19.9	4.9	19.8	6.0	11.2	15.2
135	Male	52	33	21.7	6.0	21.3	6.3	11.0	15.7
135	Female	64	38	20.4	4.0	21.2	5.5	12.1	16.9
135	Female	60	38	22.0	8.4	22.5	6.3	12.0	15.3
135	Female	55	32	18.6	5.5	19.9	5.8	11.3	14.7
135	Female	56	32	18.8	4.7	17.7	5.7	10.5	15.5
135	Female	56	30	19.5	5.5	20.0	5.2	10.4	15.1
135	Female	62	34	19.3	6.4	22.1	6.4	11.6	17.5
136	Male	50	30	19.1	6.2	21.9	7.3	11.5	17.2
136	Male	56	33	21.3	5.9	21.4	5.9	11.5	17.0
136	Male	48	30	19.0	5.2	19.1	5.9	10.4	15.1

136	Male	48	27	18.0	5.3	20.3	7.0	10.0	14.4
136	Male	49	28	18.9	5.9	19.7	6.9	10.6	14.6
136	Male	55	32	21.1	6.1	21.7	7.1	11.5	15.0
136	Male	52	31	21.1	7.1	21.4	6.9	11.0	16.0
136	Male	52	30	20.9	6.7	22.2	6.8	10.5	16.5
136	Female	55	34	18.5	5.6	17.9	5.1	10.9	15.0
136	Female	59	33	19.4	5.5	19.4	4.8	11.7	15.4
136	Female	53	31	18.8	5.9	19.5	5.3	10.8	15.4
136	Female	59	34	19.7	6.3	21.1	5.0	11.9	15.8
136	Female	51	29	18.3	5.2	18.3	5.5	10.4	14.1
136	Female	58	32	21.2	5.1	19.0	5.3	12.0	15.6
136	Female	61	36	20.4	5.8	19.7	5.7	12.1	18.0
136	Female	49	29	17.9	5.4	17.5	5.1	9.9	13.9
136	Female	55	31	18.6	5.5	18.2	5.2	10.4	16.0
136	Female	52	28	18.7	5.6	17.8	4.6	11.3	15.0
136	Female	54	34	18.1	4.8	16.9	5.5	10.7	15.0
136	Female	57	32	20.2	7.3	20.4	4.9	11.8	15.6
136	Female	50	28	18.4	5.6	19.8	6.2	10.5	15.1
145	Male	53	30	22.1	7.3	23.5	8.4	11.6	15.7
145	Male	48	29	19.2	5.5	21.5	6.5	10.7	13.8
145	Male	53	32	19.8	4.8	22.2	6.5	10.8	15.1
145	Male	52	29	22.2	7.4	23.9	6.5	11.4	15.0
145	Male	55	32	20.5	6.0	22.6	7.6	11.3	15.9
145	Male	53	29	22.2	6.3	22.9	6.5	10.7	14.9
145	Male	54	30	19.4	4.6	22.4	7.1	11.4	14.6

145	Male	46	25	17.4	4.6	18.3	5.5	9.5	13.8
145	Male	53	31	22.3	6.5	24.8	8.5	11.6	14.4
145	Male	50	30	19.1	5.9	22.1	6.6	10.3	14.0
145	Male	53	32	21.4	5.9	22.1	6.9	11.2	15.8
145	Male	48	27	18.5	4.8	21.5	6.8	9.5	13.6
145	Male	51	30	20.5	5.8	21.5	6.5	11.0	14.7
145	Male	47	25	19.0	4.8	19.7	6.4	9.8	13.4
145	Female	60	36	19.9	4.4	20.0	5.1	11.9	16.1
145	Female	54	30	18.6	5.2	19.2	4.6	10.6	14.4
145	Female	55	34	18.0	5.4	19.7	6.8	11.0	15.0
145	Female	62	35	21.9	5.9	20.8	5.8	11.8	15.6
145	Female	53	32	19.2	4.9	19.8	6.0	11.0	14.8
145	Female	57	36	18.9	4.8	19.7	5.2	11.3	15.6
145	Female	54	34	19.3	5.5	19.9	5.4	10.6	15.5
145	Female	65	37	22.7	6.0	22.1	6.1	12.7	16.7
145	Female	60	36	18.9	5.9	20.6	5.7	11.6	16.3
145	Female	56	34	19.5	4.7	19.4	5.5	11.1	15.2
145	Female	50	30	16.6	3.6	17.4	4.5	10.5	13.0
222	Male	56	33	19.6	6.4	21.8	7.8	11.2	14.9
222	Male	61	36	22.9	6.8	24.0	7.8	13.5	17.5
222	Male	56	34	20.5	6.5	23.2	7.9	12.0	15.4
222	Male	50	30	21.7	5.5	21.5	6.4	10.8	14.9
222	Male	54	31	21.5	6.4	22.7	6.4	11.1	15.5
222	Male	55	30	21.0	5.7	21.5	6.8	11.0	15.3
222	Male	53	32	21.0	5.5	22.2	6.8	11.5	14.6

222	Male	53	30	21.3	5.0	22.4	7.0	10.9	16.1
222	Male	51	30	20.9	6.3	21.6	7.3	10.7	14.0
222	Female	59	35	21.0	6.4	21.1	6.3	11.7	15.8
222	Female	55	34	19.7	5.4	21.2	5.2	11.5	16.4
245	Male	50	28	20.8	6.0	20.4	7.8	9.9	15.7
245	Male	50	31	18.5	6.3	21.5	6.5	10.9	15.1
245	Male	50	26	21.4	5.6	19.7	7.1	10.2	14.6
245	Male	46	28	19.6	6.5	19.2	7.0	9.2	13.7
245	Male	47	29	19.0	7.2	20.1	7.1	10.2	14.0
245	Male	51	31	19.4	7.8	22.1	8.5	11.5	14.9
245	Female	50	28	16.5	5.1	17.5	4.9	11.3	15.7
245	Female	56	31	20.0	5.0	21.2	7.2	11.0	16.2
245	Female	54	29	19.5	7.0	20.5	5.2	11.1	14.8
245	Female	61	32	21.5	7.4	21.0	6.6	11.7	14.9
245	Female	51	27	18.3	6.0	18.7	4.8	10.3	14.0
245	Female	52	32	20.4	7.0	21.0	5.5	10.7	15.7
245	Female	56	31	19.3	5.3	19.8	6.4	11.3	14.9
245	Female	59	31	21.4	6.5	22.9	6.9	11.4	15.6
245	Female	42	26	16.3	3.7	16.6	4.4	8.8	12.7
245	Female	54	29	21.7	6.2	20.6	6.0	11.8	15.2
245	Female	52	28	19.9	6.0	18.4	5.8	10.3	15.4
247	Male	53	29	20.3	6.6	20.7	7.9	10.4	15.3
247	Male	40	24	18.2	5.1	19.3	5.1	9.4	12.4
247	Male	50	26	19.5	5.4	21.3	6.1	10.8	15.2
247	Male	45	28	18.5	6.3	21.2	7.7	9.9	14.6

247	Female	59	32	20.8	6.7	21.9	6.5	10.1	15.3
247	Female	54	30	18.7	6.2	19.3	6.3	11.0	15.5
247	Female	54	31	19.1	5.6	18.8	5.9	10.7	16.0
247	Female	59	33	21.2	5.4	19.9	6.1	11.4	16.1
247	Female	50	32	17.8	5.9	18.4	5.2	9.5	15.4
247	Female	54	31	18.3	4.8	19.8	5.3	10.5	15.5
247	Female	52	30	17.4	5.0	16.8	6.4	10.0	13.8
247	Female	59	36	20.9	6.6	20.4	6.4	10.7	15.1
247	Female	57	31	19.7	6.0	20.9	5.3	10.7	15.0
248	Male	52	31	20.2	6.0	21.0	5.2	11.8	15.9
248	Female	64	34	22.6	6.7	22.6	6.1	12.9	16.8
257	Male	48	27	20.8	6.9	21.6	8.1	10.6	14.8
257	Female	50	29	19.7	5.9	20.0	5.2	11.3	17.7
270	Male	53	25	21.4	6.5	22.7	8.1	10.2	14.8
270	Female	53	30	21.1	6.2	21.3	6.7	11.3	16.0
271	Male	44	23	18.9	5.6	18.4	6.0	8.8	12.8
271	Male	40	23	16.9	5.4	18.3	5.7	8.3	11.7
271	Male	43	23	16.9	5.8	18.0	6.7	9.3	13.1
271	Male	43	24	18.2	5.9	18.4	5.8	9.4	12.8
271	Male	39	21	13.8	4.8	15.0	5.3	8.1	11.1
271	Male	37	20	17.3	5.7	17.0	4.6	8.1	11.5
271	Male	43	24	18.2	4.9	15.6	4.5	8.5	11.4
271	Male	41	22	17.4	5.6	16.9	6.6	8.5	12.0
271	Male	44	25	18.8	5.6	18.9	6.7	9.5	12.8
271	Male	43	26	16.1	5.7	17.3	5.8	8.6	12.2

271	Male	44	23	17.7	6.2	20.4	5.9	9.1	13.7
271	Male	43	22	19.7	6.1	19.7	8.0	8.8	11.8
271	Male	43	24	17.7	5.1	17.9	6.5	8.8	12.6
271	Male	43	21	17.7	6.2	19.1	6.3	8.5	13.1
271	Male	44	24	16.7	4.7	18.1	6.3	8.5	12.8
271	Male	45	22	14.7	5.5	20.3	6.0	9.6	13.3
271	Male	44	25	19.8	6.3	20.2	6.5	8.8	13.2
271	Male	42	23	18.4	5.0	18.7	5.4	9.3	12.9
271	Male	43	22	18.5	6.9	19.5	6.6	8.9	12.6
271	Male	41	24	17.1	6.2	17.0	5.7	8.6	12.7
271	Male	46	27	19.4	6.0	18.6	6.3	8.9	12.0
271	Male	42	24	17.4	5.0	17.5	5.2	8.6	11.5
271	Male	42	26	16.3	4.4	15.5	6.2	8.4	11.6
271	Female	50	28	18.4	6.0	17.1	4.8	10.5	13.5
271	Female	50	33	17.7	5.6	18.7	4.8	10.0	14.2
271	Female	47	32	17.8	5.1	16.4	5.2	9.5	12.4
271	Female	48	29	15.3	4.6	16.9	4.1	9.2	13.1
271	Female	51	35	17.5	5.3	17.9	4.8	10.4	13.5
271	Female	48	29	18.0	5.6	18.4	4.8	9.9	12.7
271	Female	48	29	16.6	5.9	15.6	4.8	9.7	12.2
271	Female	50	31	17.5	5.8	17.3	5.5	10.3	12.6
300	Male	57	36	24.1	7.0	24.8	8.3	11.9	15.9
300	Male	51	29	20.1	6.3	21.0	6.4	10.6	17.3
300	Male	52	32	19.2	7.2	20.8	6.9	11.0	15.5
300	Male	54	29	22.2	7.2	24.8	9.3	11.4	16.2

300	Male	49	28	20.8	5.5	21.7	5.7	10.9	15.2
300	Female	59	35	21.7	6.0	23.5	6.0	11.8	16.9
300	Female	54	33	20.7	5.8	20.6	6.1	12.1	16.9
300	Female	56	36	21.5	5.5	20.1	6.1	11.6	17.1
300	Female	58	33	21.2	5.6	23.4	6.1	11.6	15.9
300	Female	53	31	19.9	4.5	19.4	5.4	11.0	15.8
300	Female	59	34	22.0	6.1	22.5	6.2	11.9	14.4
300	Female	60	32	22.4	6.7	23.2	6.9	11.9	16.2
300	Female	55	32	21.7	5.9	21.4	6.7	11.3	14.4
300	Female	51	30	21.4	7.2	22.3	4.0	11.4	16.6
300	Female	61	40	21.8	6.4	23.9	7.2	12.5	15.6
300	Female	59	34	19.8	5.8	21.0	6.2	11.6	15.9
307	Male	52	27	22.0	5.1	23.5	5.8	10.6	16.0
307	Male	52	29	20.9	7.0	22.3	6.6	10.9	13.6
307	Male	48	26	20.8	6.5	21.1	6.6	10.4	15.8
307	Male	51	28	21.8	7.0	22.0	7.4	10.5	15.8
307	Male	52	29	20.0	6.7	22.0	7.0	10.4	13.5
307	Female	58	29	21.8	6.4	23.7	7.7	10.9	15.9
307	Female	52	27	20.6	5.5	22.9	4.7	10.7	15.9
307	Female	57	30	20.5	6.1	21.4	5.8	11.2	15.6
307	Female	57	31	21.1	4.9	21.6	7.1	11.1	15.7
307	Female	54	28	20.2	7.2	20.5	5.2	11.2	17.3
436	Female	57	31	20.0	6.2	20.6	5.8	11.4	16.7
438	Male	47	24	20.9	8.0	21.0	8.0	9.7	14.0
438	Female	53	28	19.2	6.3	18.5	5.9	9.6	14.3

453	Female	58	32	21.9	6.3	23.3	6.1	11.2	17.5
453	Female	55	29	21.2	6.7	19.7	5.4	11.1	14.4
454	Female	55	34	19.0	6.0	22.2	4.8	11.2	15.7
454	Female	56	33	20.0	6.2	22.5	5.3	10.9	15.8
458	Male	55	31	20.9	6.4	24.2	7.8	11.5	14.5
459	Male	56	28	21.5	7.6	21.9	7.4	11.5	17.1
459	Male	56	30	20.9	7.0	20.3	6.9	11.0	16.0
459	Female	51	27	20.6	6.4	20.8	6.1	10.5	15.2
461	Male	49	25	21.1	6.3	20.4	6.7	11.0	13.8
461	Male	49	30	23.3	7.2	22.5	6.4	11.5	13.6
461	Male	47	26	21.3	6.5	19.9	6.0	10.2	14.2
461	Male	48	28	21.3	6.9	20.8	7.4	10.2	12.7
461	Male	51	28	23.1	7.0	21.7	7.4	10.9	15.0
461	Male	48	35	20.5	7.8	21.8	7.6	10.7	14.7
461	Male	50	30	22.3	8.1	22.8	7.5	10.7	14.2
461	Male	50	27	21.2	6.9	21.6	7.7	10.9	13.6
461	Male	49	29	20.5	5.9	20.0	7.3	10.9	13.6
461	Female	57	30	23.5	7.2	23.4	6.1	10.8	14.3
461	Female	54	29	21.7	6.0	19.9	5.5	11.2	14.7
461	Female	52	28	19.8	5.8	18.4	5.2	11.0	14.2
461	Female	52	27	19.8	5.6	19.7	5.3	10.4	14.6
461	Female	49	26	19.8	5.8	17.7	4.5	10.4	13.6
461	Female	54	30	18.8	6.5	17.8	5.8	10.0	12.8
461	Female	52	28	20.3	6.4	19.8	5.6	10.4	13.5
461	Female	51	27	19.5	5.6	18.5	5.4	10.1	13.5

461	Female	53	29	19.9	6.2	20.0	5.5	10.8	13.8
461	Female	49	29	19.8	4.9	19.2	5.6	10.5	13.7
463	Female	48	26	19.0	5.1	18.8	5.5	10.1	14.8
465	Female	62	34	22.7	7.2	23.3	7.8	12.1	17.8
465	Female	63	29	22.7	7.9	21.4	7.6	11.7	14.6
465	Female	58	30	23.9	7.5	19.9	8.1	11.4	17.1
465	Female	61	33	20.8	7.2	22.4	7.5	12.1	17.5
465	Female	57	29	18.8	6.5	20.7	7.5	11.1	16.3
465	Female	57	28	22.4	6.6	21.9	7.3	10.6	16.2
465	Female	70	32	21.8	7.0	23.8	6.8	12.0	17.4
465	Female	59	35	22.5	8.2	22.7	7.7	12.5	15.3
465	Female	61	30	20.8	6.3	20.8	6.4	12.1	17.3
465	Female	65	26	19.7	6.4	20.0	6.9	10.2	16.2
465	Female	51	29	18.7	5.6	17.7	5.5	10.9	15.3
465	Female	55	31	21.3	7.3	20.4	6.8	11.6	18.0
465	Female	65	33	20.8	5.5	21.6	6.0	12.7	17.5
465	Female	60	28	20.6	6.7	19.4	6.6	10.6	15.3
1003	Male	57	27	23.1	7.0	24.5	8.7	11.0	16.0
1003	Male	49	23	19.7	6.0	20.9	7.5	9.3	13.6

Triturus rudolfi **sp. nov.**

2	Male	56	32	23.8	7.1	22.8	9.3	11.3	16.6
2	Male	52	29	22.0	7.2	22.2	8.0	11.2	14.9
2	Male	64	30	22.3	7.8	24.2	8.1	11.1	15.4
2	Male	55	28	23.4	6.8	23.0	9.3	11.0	15.6

2	Male	54	29	23.4	7.5	23.8	8.7	11.0	17.1
2	Male	46	25	19.0	6.0	19.1	7.3	10.0	13.4
2	Male	45	24	18.6	5.2	18.2	5.6	9.9	12.1
2	Male	50	26	22.3	6.1	22.5	9.0	11.0	15.3
2	Male	53	28	22.4	9.2	22.2	8.4	11.9	15.5
2	Male	53	29	23.4	7.2	23.5	7.7	11.2	17.1
2	Male	57	30	22.0	6.3	23.4	7.8	11.7	15.4
2	Male	59	34	23.8	7.5	23.2	7.2	13.1	17.4
2	Male	52	29	22.3	7.0	22.0	7.9	11.4	16.2
2	Male	53	29	21.4	6.8	21.0	7.6	10.8	15.9
2	Male	52	29	23.0	7.3	23.3	7.7	11.2	16.9
2	Male	58	33	23.9	7.3	23.5	9.0	10.9	15.6
2	Male	54	29	23.6	7.9	25.0	8.4	11.9	17.1
2	Male	52	28	22.2	6.9	23.8	7.7	10.9	14.7
2	Male	50	28	22.0	7.0	22.2	7.3	12.0	13.5
2	Male	52	30	25.0	6.3	21.7	6.9	11.0	14.5
2	Male	47	26	18.6	6.7	18.2	7.1	10.4	13.2
2	Male	53	30	21.0	6.8	20.3	7.4	11.1	15.4
2	Male	46	26	17.8	5.7	17.9	6.4	10.0	14.0
2	Male	55	31	23.0	6.6	24.0	7.5	11.7	15.3
2	Male	47	29	19.5	6.2	20.9	6.6	10.2	14.1
2	Male	55	31	22.2	6.8	25.5	8.4	11.2	15.7
2	Male	53	30	21.6	6.8	22.5	7.6	10.4	15.1
2	Male	51	31	17.1	5.8	23.9	7.7	10.6	14.7
2	Male	53	30	22.0	6.9	24.8	7.7	10.8	15.5

2	Male	49	29	19.6	6.1	21.8	5.9	10.1	14.1
2	Male	51	30	20.5	6.0	21.1	6.3	10.5	14.8
2	Male	54	30	21.0	5.9	21.4	6.0	11.4	15.6
2	Male	51	30	22.4	6.8	23.9	6.6	10.4	14.9
2	Male	52	30	22.3	8.5	25.5	8.8	10.7	15.6
2	Female	56	36	21.3	6.1	20.7	6.0	10.5	13.5
2	Female	60	35	21.6	6.4	22.7	7.6	11.8	16.1
2	Female	60	36	20.2	6.8	24.1	7.0	11.4	15.7
2	Female	64	37	20.6	5.7	23.4	6.6	12.9	16.9
2	Female	55	34	19.7	5.4	19.8	7.6	11.2	15.7
2	Female	58	35	21.0	5.4	18.9	5.3	11.1	13.3
2	Female	59	38	22.1	6.0	21.9	7.1	11.5	15.6
2	Female	60	36	20.3	6.0	22.2	6.8	11.9	16.9
2	Female	54	33	20.0	6.3	19.5	6.4	10.6	13.9
2	Female	59	35	19.2	6.4	20.6	6.0	11.2	15.5
2	Female	63	36	22.1	7.1	20.7	7.0	13.1	17.5
2	Female	60	34	21.4	5.7	21.3	6.4	12.3	16.2
2	Female	61	35	21.5	6.0	20.7	6.6	12.3	17.0
2	Female	69	35	21.4	5.4	20.8	5.2	12.2	16.4
2	Female	60	35	22.8	6.6	21.6	6.2	12.9	17.0
2	Female	55	34	18.6	6.9	20.2	7.0	12.6	15.4
2	Female	59	35	21.9	6.8	21.6	6.3	12.4	15.1
2	Female	60	36	24.0	5.5	21.3	6.0	12.5	16.7
2	Female	59	35	21.6	5.8	19.6	6.3	11.8	17.3
2	Female	54	30	18.1	5.5	19.1	6.1	11.1	16.5

2	Female	55	32	19.7	6.9	19.3	6.9	12.6	16.4
2	Female	59	35	22.3	6.9	21.0	6.9	12.1	16.9
2	Female	62	35	22.8	6.8	20.9	6.7	13.4	18.3
2	Female	54	33	19.9	5.6	19.5	6.2	12.1	15.8
2	Female	52	29	20.9	6.8	19.8	6.8	11.1	13.5
2	Female	57	35	19.2	6.0	20.7	6.9	11.6	16.7
2	Female	60	34	20.6	5.3	19.6	6.5	12.0	17.1
2	Female	61	34	20.4	6.5	20.8	10.0	12.0	17.0
2	Female	54	31	20.6	11.4	17.4	11.0	12.1	17.1
2	Female	59	31	20.8	5.9	21.5	5.7	12.3	15.0
2	Female	59	33	21.0	5.8	19.2	4.5	12.2	15.6
26	See Appendix Table 1								
28	Male	56	31	25.5	6.8	26.2	8.1	12.0	17.3
28	Male	54	29	23.2	6.8	24.3	7.6	11.1	15.3
28	Male	54	31	22.2	6.8	22.5	6.9	11.3	15.6
28	Male	60	33	24.2	6.5	24.0	7.8	12.2	16.3
28	Male	59	28	22.0	6.4	20.9	7.0	10.8	13.3
28	Female	60	34	23.5	6.1	21.8	6.1	12.0	15.5
28	Female	68	39	25.4	6.5	25.0	6.0	13.2	18.1
46	Male	50	25	20.4	6.3	20.6	8.0	10.0	14.5
46	Female	50	27	18.8	4.9	19.2	5.6	10.2	14.6
46	Female	52	28	19.3	5.7	17.7	6.4	10.0	14.6
46	Female	48	25	17.9	5.2	18.1	5.4	9.9	14.2
97	Male	49	26	20.9	5.5	20.5	6.3	9.1	14.1
97	Male	48	27	19.8	5.7	20.8	6.0	9.6	15.1

97	Male	46	26	20.3	5.5	19.6	5.4	10.2	15.2
97	Male	48	26	19.1	5.1	21.9	6.8	9.4	11.9
97	Male	49	27	21.0	6.0	22.4	7.9	9.6	13.8
97	Male	46	23	19.7	6.4	21.0	5.4	9.1	14.5
97	Male	46	23	19.2	5.8	20.6	7.1	9.6	13.2
97	Male	48	26	19.5	6.0	22.4	6.7	9.5	13.3
97	Male	52	28	20.9	6.5	21.9	7.3	10.4	14.4
97	Male	48	27	20.2	5.9	21.3	6.4	10.0	14.2
97	Female	53	30	18.8	6.3	19.2	5.1	10.3	14.4
97	Female	52	29	18.8	5.5	18.4	4.6	10.5	15.2
97	Female	54	30	20.8	6.4	20.0	5.9	11.1	14.6
97	Female	55	30	19.9	6.0	20.2	4.8	10.7	16.1
97	Female	52	30	17.5	4.9	19.8	5.6	10.4	14.4
97	Female	55	30	21.3	5.4	19.1	5.8	10.8	16.3
97	Female	48	25	17.6	5.4	18.7	5.4	10.3	14.0
97	Female	53	27	19.4	5.9	19.3	4.8	10.7	15.2
97	Female	52	26	19.4	6.5	19.6	5.7	10.6	14.2
97	Female	53	29	20.6	6.3	19.7	5.2	10.5	15.0
97	Female	50	27	17.6	4.3	18.3	4.9	10.1	13.3
97	Female	56	30	22.0	6.1	20.2	5.9	11.1	16.8
97	Female	55	30	19.3	6.4	21.3	5.9	10.5	15.9
97	Female	54	30	20.3	5.9	20.2	5.1	10.3	14.5
97	Female	54	29	20.2	5.5	20.2	5.8	11.8	15.0
97	Female	54	30	20.0	5.7	18.4	5.5	11.3	15.3
98	Male	49	25	19.6	4.9	21.0	6.3	9.2	14.5

98	Male	52	27	21.5	6.9	22.4	7.4	10.2	13.9
98	Male	49	26	19.2	5.5	22.2	6.1	9.6	15.2
98	Male	48	25	19.7	6.1	19.9	6.6	9.9	14.1
98	Male	52	28	22.2	7.0	23.3	7.4	9.8	15.4
98	Male	48	24	19.3	6.0	21.9	6.6	11.1	15.0
98	Male	52	29	20.7	7.1	22.5	6.9	10.1	14.8
98	Male	48	25	19.5	6.3	20.9	6.0	9.4	14.0
98	Male	51	25	20.5	6.5	21.3	6.3	9.8	14.4
98	Male	48	25	20.0	6.1	20.1	6.7	9.2	13.5
98	Male	48	25	19.3	5.9	21.9	6.5	9.5	14.3
98	Male	48	24	21.0	6.5	21.4	6.4	9.8	13.3
98	Male	48	26	19.1	6.1	18.4	5.4	9.3	12.6
98	Male	48	25	18.5	4.7	20.0	6.9	9.4	14.9
98	Female	54	26	20.1	5.5	19.7	5.9	10.5	14.1
98	Female	50	28	16.7	5.4	16.7	4.6	9.3	13.3
98	Female	52	28	19.5	6.2	19.6	5.9	10.9	14.7
98	Female	58	32	21.5	5.3	21.5	5.0	11.4	14.8
98	Female	57	32	19.2	6.4	20.7	5.1	11.2	15.7
98	Female	54	28	18.7	4.9	19.7	4.7	10.4	15.3
127	Male	56	33	21.4	7.2	23.7	7.3	11.1	15.2
127	Male	55	32	22.0	6.8	23.8	7.6	12.1	15.8
127	Male	50	29	22.3	5.6	22.6	7.6	10.6	16.4
127	Male	59	34	26.4	8.0	25.4	7.8	12.1	16.3
127	Female	63	38	22.2	7.0	23.2	6.5	12.8	17.3
127	Female	64	36	25.0	6.4	25.7	6.8	12.8	17.3

150	Female	63	40	21.2	7.0	23.5	5.3	11.9	15.4
150	Female	63	40	21.2	7.0	23.5	5.3	11.9	15.4
151	Male	57	33	21.0	6.6	23.1	6.9	11.3	15.3
151	Male	57	33	21.0	6.6	23.1	6.9	11.3	15.3
152	Female	64	42	23.9	6.2	23.0	6.0	12.8	16.2
153	Male	50	28	18.2	3.9	19.0	5.3	10.2	13.0
153	Male	59	34	25.7	6.3	24.5	6.4	12.7	16.4
153	Male	55	29	23.6	6.3	23.4	6.8	11.3	14.5
153	Male	55	32	22.7	7.0	24.7	6.4	10.8	13.6
153	Male	63	37	27.4	7.4	27.1	8.9	11.6	16.9
153	Male	55	29	23.6	6.3	23.4	6.8	11.3	14.5
153	Male	55	32	22.7	7.0	24.7	6.4	10.8	13.6
153	Male	50	28	18.2	3.9	19.0	5.3	10.2	13.0
153	Male	63	37	27.4	7.4	27.1	8.9	11.6	16.9
153	Male	59	34	25.7	6.3	24.5	6.4	12.7	16.4
153	Female	74	42	24.9	6.3	25.4	6.3	14.9	17.6
153	Female	68	36	24.3	8.1	28.5	6.6	12.4	18.4
153	Female	68	36	27.7	7.3	24.5	7.2	14.4	18.7
153	Female	74	42	24.9	6.3	25.4	6.3	14.9	17.6
153	Female	68	36	24.3	8.1	28.5	6.6	12.4	18.4
153	Female	68	36	27.7	7.3	24.5	7.2	14.4	18.7
155	Male	56	35	20.9	6.6	21.0	5.3	12.8	15.5
155	Male	54	31	23.0	6.2	22.5	6.7	11.3	15.1
155	Male	59	33	25.4	6.6	25.1	6.7	11.6	16.3
155	Male	62	36	25.3	6.3	23.8	7.9	12.7	16.6

155	Female	56	33	20.0	4.9	22.9	5.5	12.2	13.4
155	Female	66	41	25.3	6.6	26.4	5.6	13.8	14.7
155	Female	63	36	23.0	6.6	22.0	5.3	13.5	16.1
155	Female	63	34	21.7	5.7	24.3	6.2	12.1	14.9
155	Female	62	34	21.4	5.5	21.5	5.3	11.6	14.2
155	Female	62	38	23.8	4.1	25.2	6.6	12.6	15.7
155	Female	71	42	24.3	5.5	27.8	6.6	13.5	15.7
157	Female	64	37	23.5	5.6	22.7	5.3	12.6	16.2
157	Female	60	36	21.2	5.6	21.3	5.1	12.6	15.6
206	Female	64	40	23.5	7.0	20.7	5.1	13.1	17.9
209	Male	58	34	22.3	6.8	24.8	6.2	11.8	16.2
209	Male	58	33	23.3	6.7	23.8	7.6	11.3	15.9
209	Male	60	33	24.0	6.3	26.7	8.5	12.5	17.2
209	Male	62	33	25.6	7.4	26.4	10.0	12.2	18.8
209	Male	61	35	26.5	8.8	27.7	9.3	12.0	17.3
209	Male	54	33	22.0	6.7	23.5	6.2	10.4	15.1
209	Male	54	32	22.7	6.8	24.9	7.1	11.4	15.8
209	Male	55	33	22.2	6.7	23.5	7.2	12.3	16.6
209	Male	53	30	22.5	6.6	24.4	7.9	11.0	15.6
209	Male	53	30	23.9	7.9	25.5	7.1	10.8	16.4
209	Male	56	30	22.9	6.7	24.7	8.1	11.3	15.6
209	Female	64	38	23.8	5.2	23.5	5.7	13.4	19.6
209	Female	65	41	23.3	7.2	24.8	5.7	13.3	17.8
209	Female	68	39	23.0	5.7	24.0	6.2	13.7	19.9
209	Female	71	45	24.6	7.5	25.6	5.9	14.4	19.3

243	Male	51	27	21.1	7.3	22.7	7.8	11.1	15.7
243	Male	53	29	22.4	7.4	22.2	8.2	10.7	15.2
243	Male	47	28	20.6	6.4	23.6	7.5	10.7	15.6
243	Male	47	24	19.9	8.1	23.2	7.7	10.0	15.1
243	Male	46	24	21.4	7.1	22.5	7.1	10.4	15.3
243	Male	50	26	22.7	8.1	23.2	8.7	10.5	14.0
243	Female	48	27	19.4	5.6	19.8	6.0	10.5	14.1
243	Female	55	33	21.8	6.7	19.8	10.9	11.2	15.4
243	Female	56	28	22.1	6.3	20.3	5.8	11.4	15.2
243	Female	54	31	19.6	5.2	21.5	8.3	10.4	15.9

Indetermined

3	Male	55	30	23.4	6.3	23.6	6.5	11.2	15.7
3	Male	55	32	21.3	7.0	23.3	7.2	11.2	16.0
3	Male	56	30	23.1	7.8	25.3	7.8	11.5	17.5
3	Male	54	31	22.1	7.1	24.4	8.1	11.4	16.2
3	Male	52	29	20.1	7.1	22.3	7.0	10.1	14.8
3	Male	52	32	23.3	7.0	24.6	8.1	11.2	16.2
3	Male	53	32	22.0	6.3	22.6	7.3	10.5	15.4
3	Male	52	29	20.7	6.3	21.6	7.1	10.4	15.8
3	Male	55	30	21.5	7.3	23.6	7.4	10.6	16.6
3	Male	54	28	23.0	6.1	23.9	7.1	10.8	15.2
3	Female	60	37	23.1	8.1	24.0	7.0	12.7	17.9
3	Female	56	33	22.3	6.7	22.4	5.7	11.0	16.3
3	Female	61	38	20.4	5.7	21.2	6.2	11.9	15.4

3	Female	63	33	24.4	7.3	24.9	6.6	13.0	17.9
3	Female	62	33	22.9	6.3	22.0	6.8	12.2	17.9
3	Female	62	34	23.3	7.2	23.9	6.2	12.2	17.6
3	Female	63	37	23.4	6.3	23.2	6.6	12.7	17.0
3	Female	63	34	23.6	7.2	23.9	8.0	11.8	17.5
3	Female	62	39	19.4	5.1	20.9	7.4	11.5	17.1
3	Female	63	35	23.8	7.1	23.3	6.1	11.7	16.5
24	Female	70	41	25.5	8.0	28.0	7.3	16.7	20.0
52	Male	55	35	20.0	6.5	17.3	7.6	12.0	18.3
52	Male	55	40	20.0	5.0	20.0	6.1	12.1	15.0
52	Female	48	30	21.0	9.2	20.2	9.0	10.0	15.0
58	Male	52	31	21.0	7.2	22.2	8.7	11.5	14.1
58	Male	59	28	21.5	7.2	22.4	9.6	12.0	16.0
58	Male	53	27	20.9	6.9	21.6	7.0	11.7	16.7
58	Male	62	31	25.8	8.1	27.3	8.0	12.8	19.4
58	Female	59	31	21.4	5.6	21.5	5.5	11.2	16.0
58	Female	66	34	21.5	6.2	25.4	5.6	13.4	18.4
58	Female	80	43	27.8	8.1	28.5	7.6	15.3	20.9
58	Female	67	34	24.0	8.2	24.4	7.0	13.5	17.8
58	Female	59	32	23.3	5.4	22.6	6.2	11.7	15.7
58	Female	61	31	24.2	7.0	20.2	7.6	13.4	15.5
58	Female	63	36	21.5	6.9	19.3	6.4	12.4	15.0
146	Male	56	30	22.4	4.9	23.3	6.9	10.6	14.1
146	Female	66	40	22.1	6.5	23.2	5.9	12.0	17.0
147	Male	56	29	22.2	6.8	22.3	8.0	11.3	14.8

147	Male	52	28	21.4	6.1	21.4	6.5	10.0	15.3
147	Male	54	32	24.5	7.4	23.9	8.0	11.1	15.5
147	Male	49	26	20.5	6.3	22.3	6.6	10.0	14.6
147	Male	49	27	19.7	6.0	20.6	6.7	9.8	14.0
147	Female	61	35	20.9	6.5	22.1	6.8	11.3	15.9
147	Female	60	34	22.5	5.8	23.4	5.4	11.2	14.7
147	Female	59	32	20.0	6.0	21.2	6.2	11.2	15.5
147	Female	59	31	20.8	5.3	22.4	5.4	10.5	14.7
147	Female	57	36	21.4	6.7	22.5	7.5	11.1	14.3
148	Male	53	27	22.0	6.1	21.5	5.1	10.8	13.6
148	Male	56	34	21.8	6.9	22.3	7.1	11.5	15.8
148	Male	53	32	21.0	5.0	19.7	6.2	10.8	13.5
148	Female	62	36	21.2	6.1	20.3	5.6	11.9	14.8
148	Female	60	34	20.7	5.6	21.9	5.1	12.0	16.0
148	Female	60	34	22.2	6.5	22.4	5.9	11.4	15.5
148	Female	55	37	21.6	6.5	20.3	5.4	11.4	14.5
148	Female	63	39	20.4	5.1	22.6	5.5	11.8	16.8
148	Female	58	32	21.7	5.4	20.9	6.6	10.7	16.5
148	Female	59	36	21.5	6.3	23.0	5.6	12.3	17.3
148	Female	60	35	21.5	6.7	21.5	5.3	12.7	17.5
148	Female	58	30	21.8	5.6	20.0	6.4	11.5	15.3
148	Female	64	37	21.7	6.1	22.4	4.8	11.7	15.8
148	Female	62	34	21.2	6.3	21.8	6.1	11.4	15.5
148	Female	63	35	22.4	7.1	22.5	5.2	11.9	17.4
148	Female	58	34	21.7	6.1	21.3	5.6	11.3	15.5

148	Female	54	26	18.4	5.8	19.5	4.6	10.8	14.4
148	Female	61	34	22.1	5.9	20.9	6.3	12.0	16.0
148	Female	61	37	20.1	6.2	18.7	6.2	11.3	14.6
148	Female	62	34	22.4	6.4	22.5	6.4	12.5	16.7
205	Male	55	33	22.7	7.5	23.6	7.3	10.5	16.0
205	Male	55	30	22.8	6.5	23.9	6.0	10.8	14.5
205	Male	50	26	21.1	5.4	21.4	5.2	10.1	15.1
205	Male	50	31	20.6	6.7	23.5	8.1	10.9	13.5
205	Male	51	29	20.6	6.9	22.0	6.6	10.5	15.0
205	Male	54	30	21.9	6.0	23.1	7.6	11.3	16.0
205	Male	54	30	22.0	6.5	23.0	7.0	10.2	14.2
205	Male	58	34	23.5	6.5	23.1	7.5	11.1	16.1
205	Male	60	34	24.1	8.2	25.8	9.0	11.9	18.0
205	Male	59	32	23.4	7.2	24.4	8.2	11.8	17.2
205	Male	53	33	20.5	5.9	22.8	6.4	9.8	16.0
205	Male	60	34	24.1	8.2	25.8	9.0	11.9	18.0
205	Male	51	29	20.6	6.9	22.0	6.6	10.5	15.0
205	Male	53	33	20.5	5.9	22.8	6.4	9.8	16.0
205	Male	54	30	21.9	6.0	23.1	7.6	11.3	16.0
205	Male	54	30	22.0	6.5	23.0	7.0	10.2	14.2
205	Male	55	33	22.7	7.5	23.6	7.3	10.5	16.0
205	Male	50	26	21.1	5.4	21.4	5.2	10.1	15.1
205	Male	50	31	20.6	6.7	23.5	8.1	10.9	13.5
205	Male	55	30	22.8	6.5	23.9	6.0	10.8	14.5
205	Male	59	32	23.4	7.2	24.4	8.2	11.8	17.2

205	Male	56	34	22.8	6.5	23.4	7.1	12.3	17.0
205	Male	56	34	22.8	6.5	23.4	7.1	12.3	17.0
205	Male	58	34	23.5	6.5	23.1	7.5	11.1	16.1
205	Female	66	40	22.8	6.9	23.3	4.5	13.0	17.9
205	Female	60	36	22.7	5.9	21.6	5.5	11.3	16.0
205	Female	60	36	22.7	5.9	21.6	5.5	11.3	16.0
205	Female	67	38	22.6	6.7	23.1	6.1	12.7	18.0
205	Female	67	38	22.6	6.7	23.1	6.1	12.7	18.0
205	Female	61	34	20.8	6.8	20.4	6.0	11.6	16.6
205	Female	59	35	21.1	6.1	21.4	5.4	11.0	15.0
205	Female	64	39	24.7	6.1	22.2	7.1	12.2	16.9
205	Female	66	39	23.1	7.4	22.3	6.5	13.2	19.1
205	Female	66	39	23.1	7.4	22.3	6.5	13.2	19.1
205	Female	64	37	23.4	7.2	24.4	8.2	11.8	17.2
205	Female	64	37	23.4	7.2	24.4	8.2	11.8	17.2
205	Female	61	34	20.8	6.8	20.4	6.0	11.6	16.6
205	Female	64	39	24.7	6.1	22.2	7.1	12.2	16.9
205	Female	59	35	21.1	6.1	21.4	5.4	11.0	15.0
205	Female	66	40	22.8	6.9	23.3	4.5	13.0	17.9
205	Female	58	36	20.7	6.2	20.5	6.7	11.1	16.3
205	Female	58	36	20.7	6.2	20.5	6.7	11.1	16.3
205	Female	67	44	21.9	5.7	25.7	6.4	13.6	19.9
205	Female	67	44	21.9	5.7	25.7	6.4	13.6	19.9
205	Female	50	29	20.7	5.9	20.3	5.4	11.2	13.9
205	Female	50	29	20.7	5.9	20.3	5.4	11.2	13.9

218	Male	65	35	27.4	6.8	29.1	6.7	13.5	19.3
218	Male	64	34	26.3	6.4	26.1	6.0	12.6	18.0
218	Male	62	35	25.3	7.0	26.8	7.4	13.0	17.7
218	Male	61	33	26.0	6.3	27.3	6.4	12.9	18.4
219	Female	67	41	23.6	5.9	26.5	7.0	13.2	17.5
219	Female	65	41	24.8	7.2	24.1	5.4	12.9	19.7
219	Female	65	39	23.4	6.6	23.5	4.9	12.7	19.0

References

- Arntzen, J. W. (2024). Morphological and genetic diversification of Old-World marbled newts, with the description of a new and ‘not-at-all-cryptic’ subspecies from the Iberian Peninsula (Triturus, Salamandridae). *Contributions to Zoology*: 1–26.
<https://doi.org/10.1163/18759866-bja10055>
- Clarke, K. R., Gorley, R. N. (2015). *PRIMER v7: User Manual/Tutorial*. PRIMER-E, Plymouth, UK.
- Derryberry, E. P., Derryberry, G. E., Maley, J. M., Brum R. T. (2014). HZAR: hybrid zone analysis using an R software package. *Molecular Ecology Resources* 14: 652–663.
<https://doi.org/10.1111/1755-0998.12209>
- Rousset, F. (2008). Genepop_007: a complete re-implementation of the Genepop software for Windows and Linux. *Molecular Ecology Resources* 8: 103–106.
<https://doi.org/10.1111/j.1471-8286.2007.01931.x>