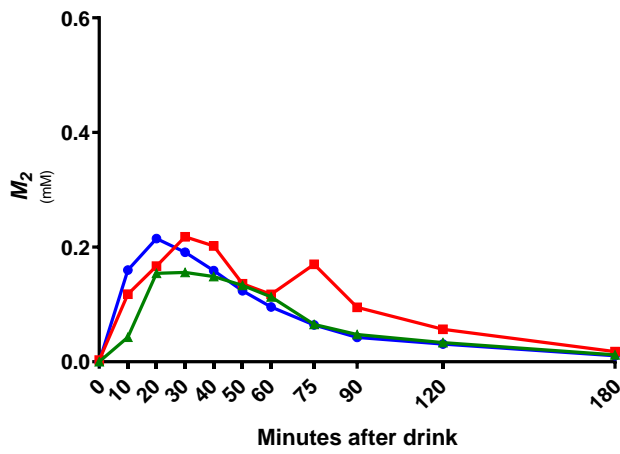
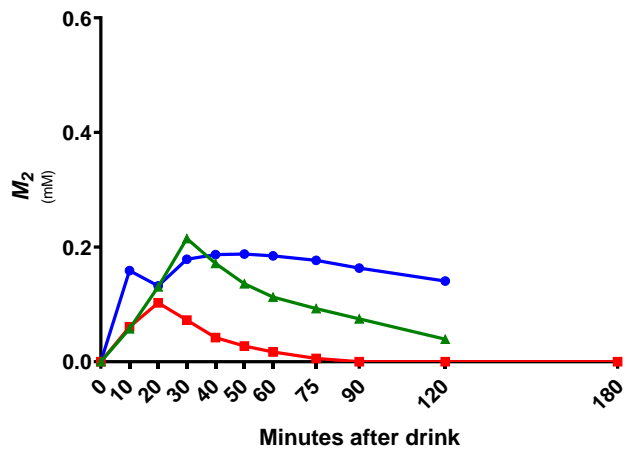


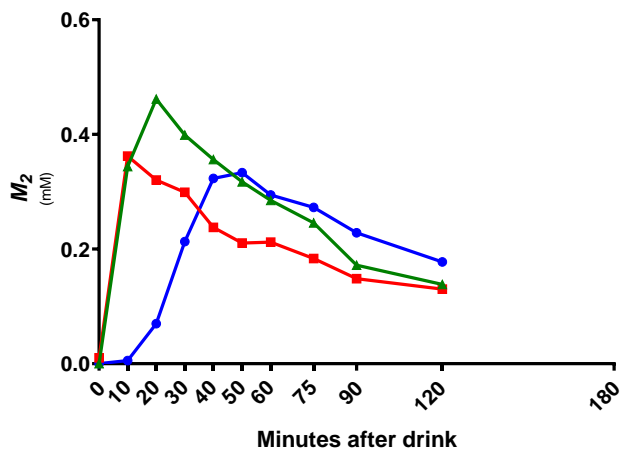
007



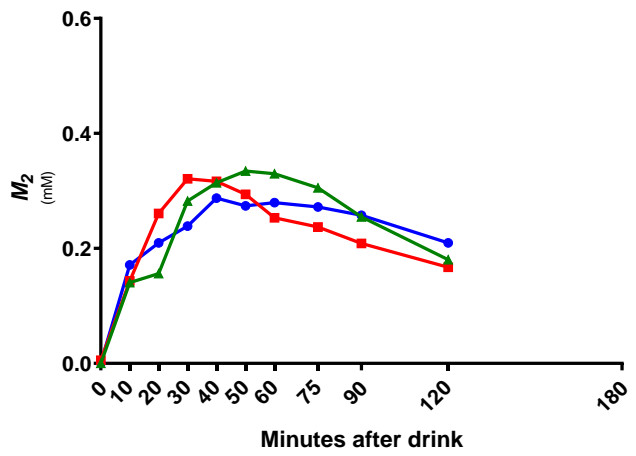
008



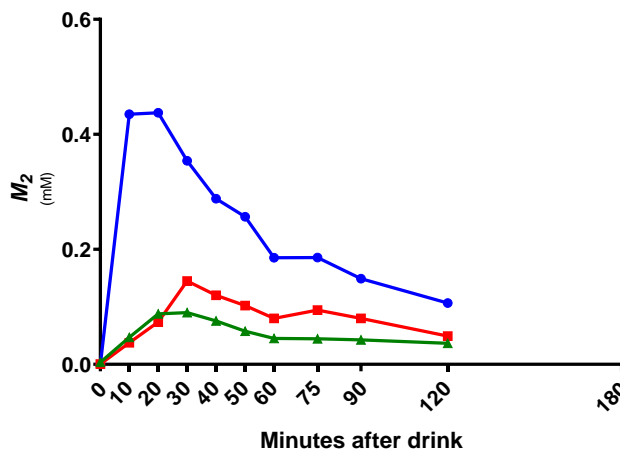
009



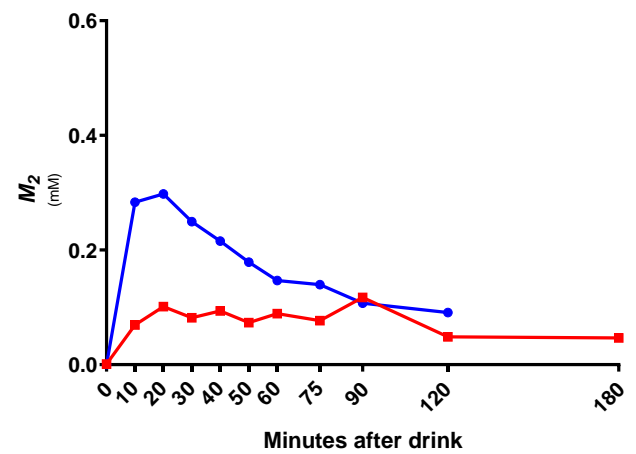
010

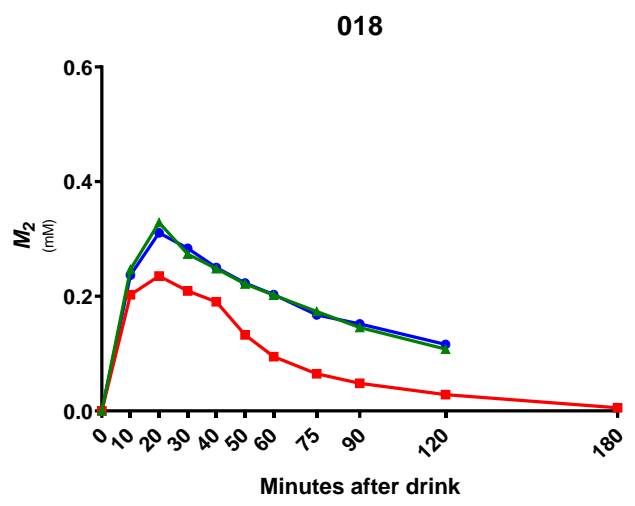
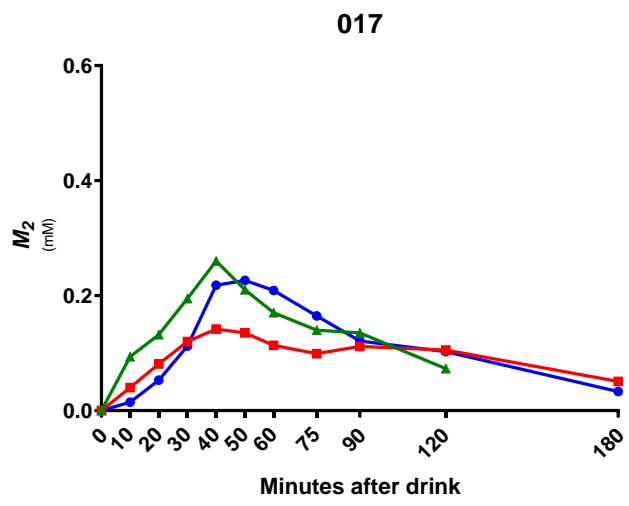
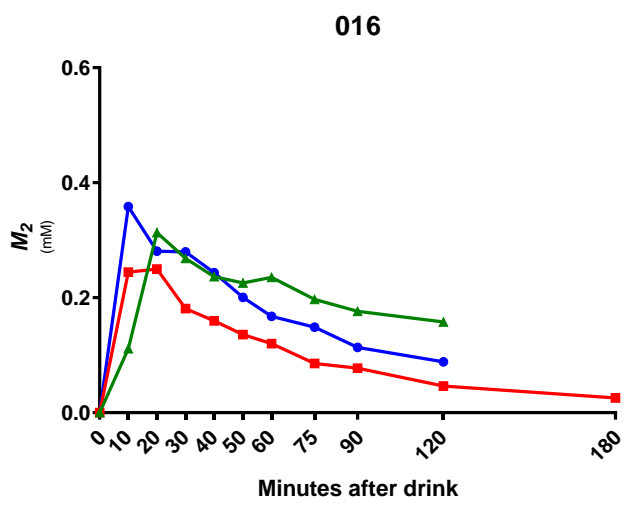
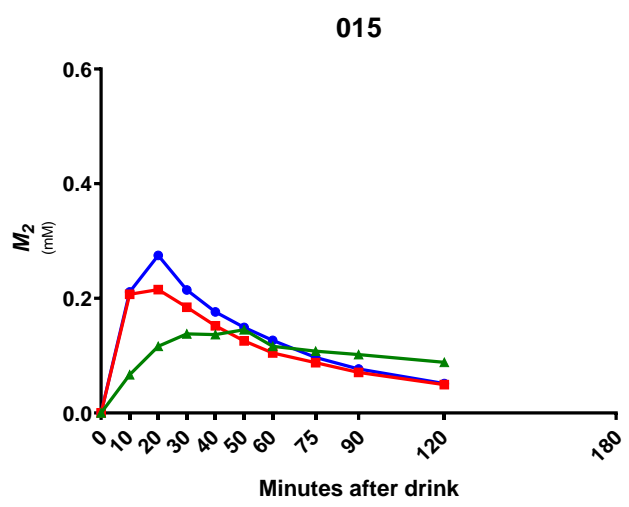
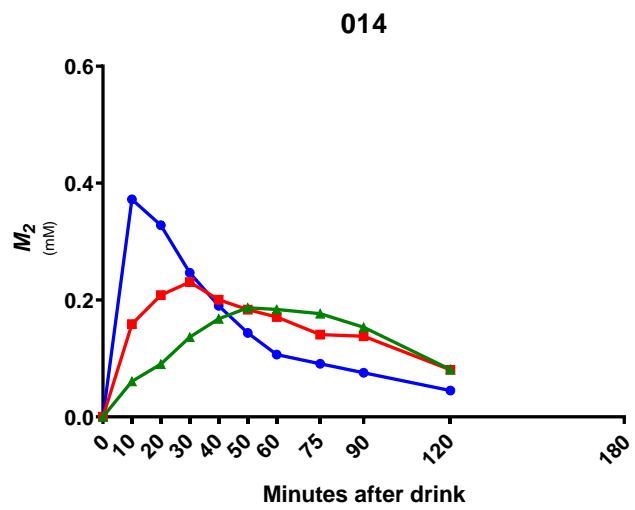
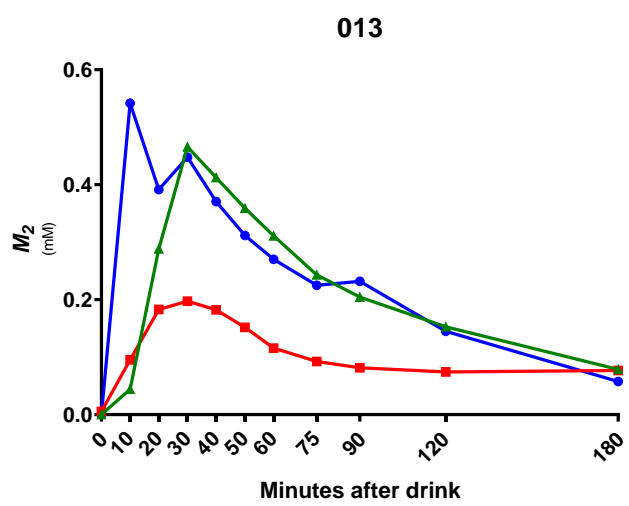


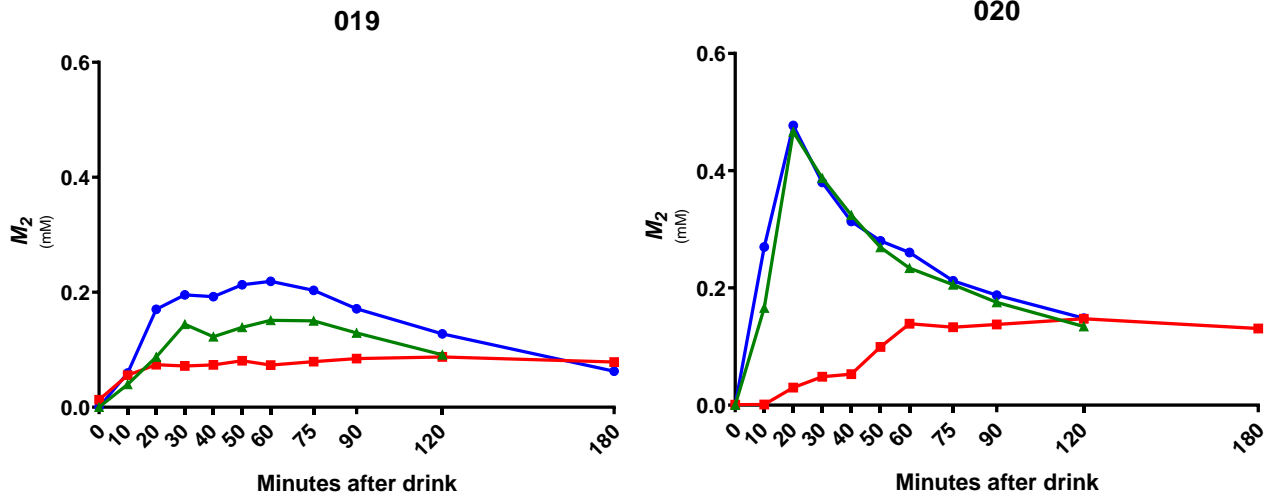
011



012







**Supplemental file 1. Calculated  $M_2$  curve in study participants during glucose-SIB test 1 (blue), glucose-SIB test 2 (red) and glucose-SIB test 3 (green).** Less than 25% decrease in  $M_2$  concentration between the peak and the last time point were observed in subject 008 (glucose-SIB test 1), subject 019 (glucose-SIB test 2) and subject 020 (glucose-SIB test 2) disqualifying these data for computational analysis.