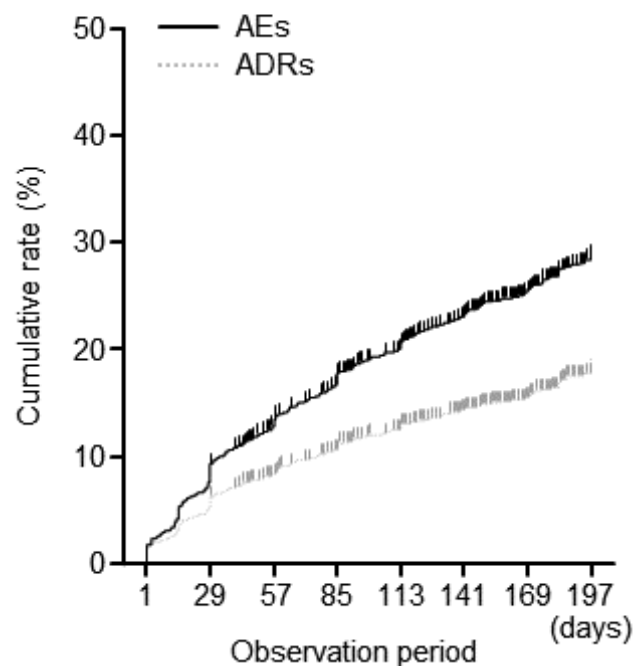
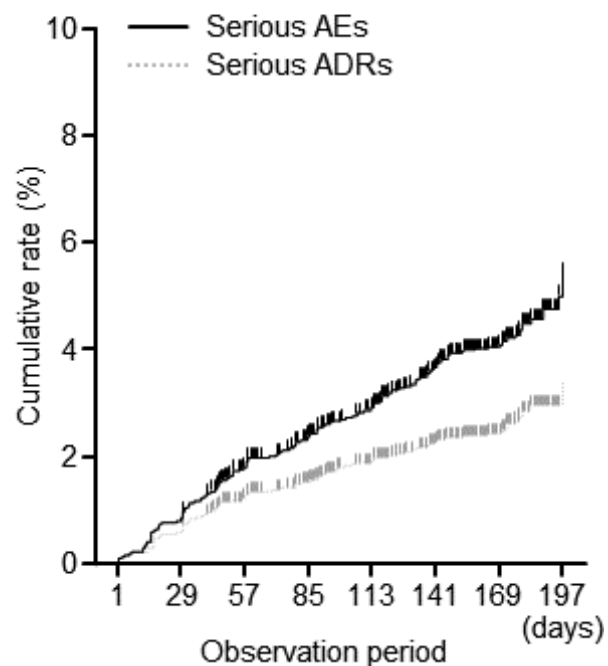


Supplementary Figure 1

a AEs/ADRs



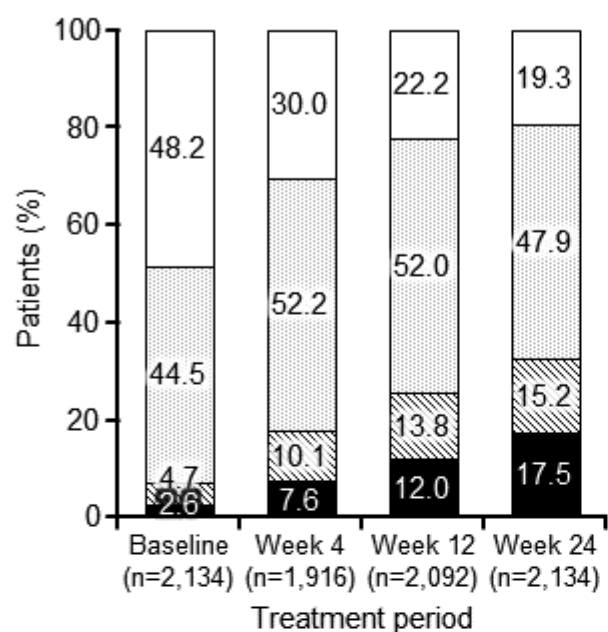
b Serious AEs/ADRs



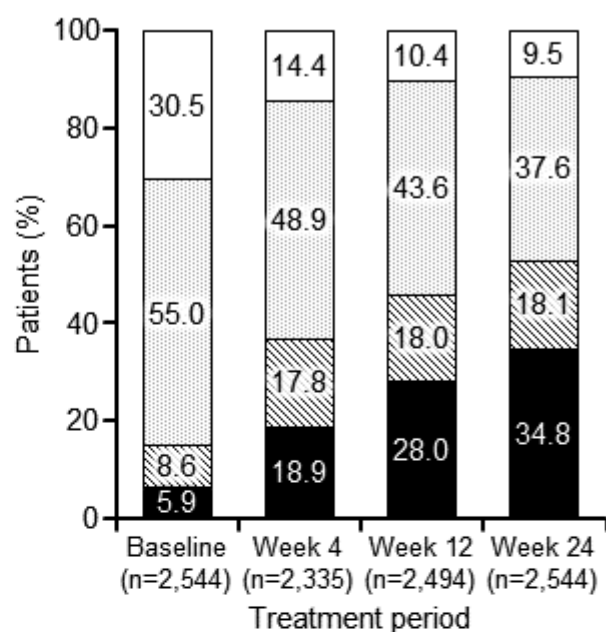
Supplementary Figure 1. Cumulative rates of a) AEs/ADRs and b) serious AEs/ADRs in patients treated with abatacept.

Supplementary Figure 2

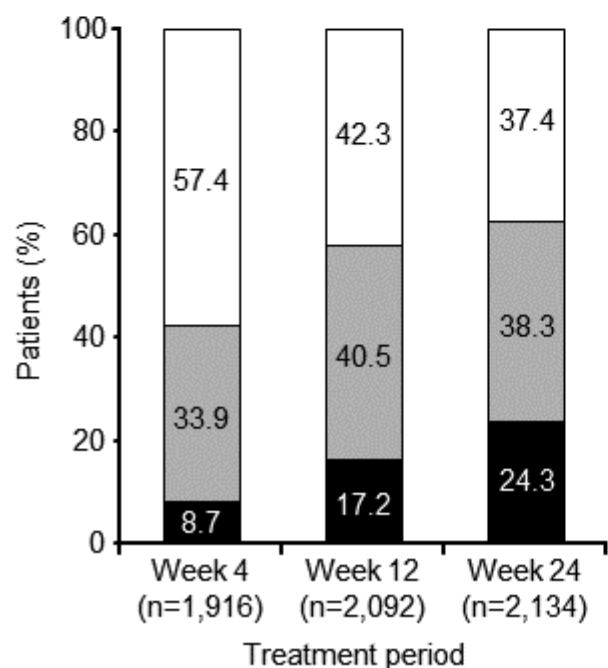
a DAS28-ESR



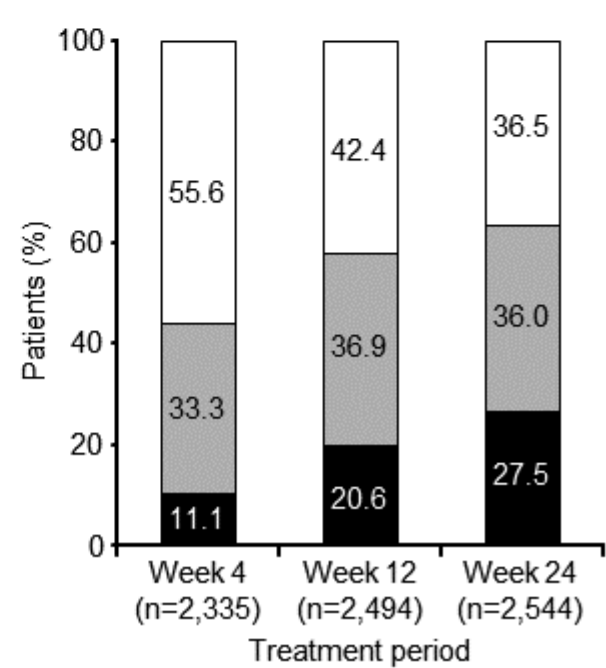
b DAS28-CRP



c EULAR response based on DAS28-ESR



d EULAR response based on DAS28-CRP



Supplementary Figure 2. Change in categories of disease activity in patients treated with abatacept over time. a) DAS28 based on erythrocyte sedimentation rate (DAS28-ESR). The last-observation-carried-forward (LOCF) imputation method was used. b) DAS28 based on C-reactive protein (DAS28-CRP). The LOCF imputation method was used. c) EULAR response based on DAS28-ESR. The LOCF imputation method was used. d) EULAR response based on DAS28-CRP. The LOCF imputation method was used.