

Figure 5

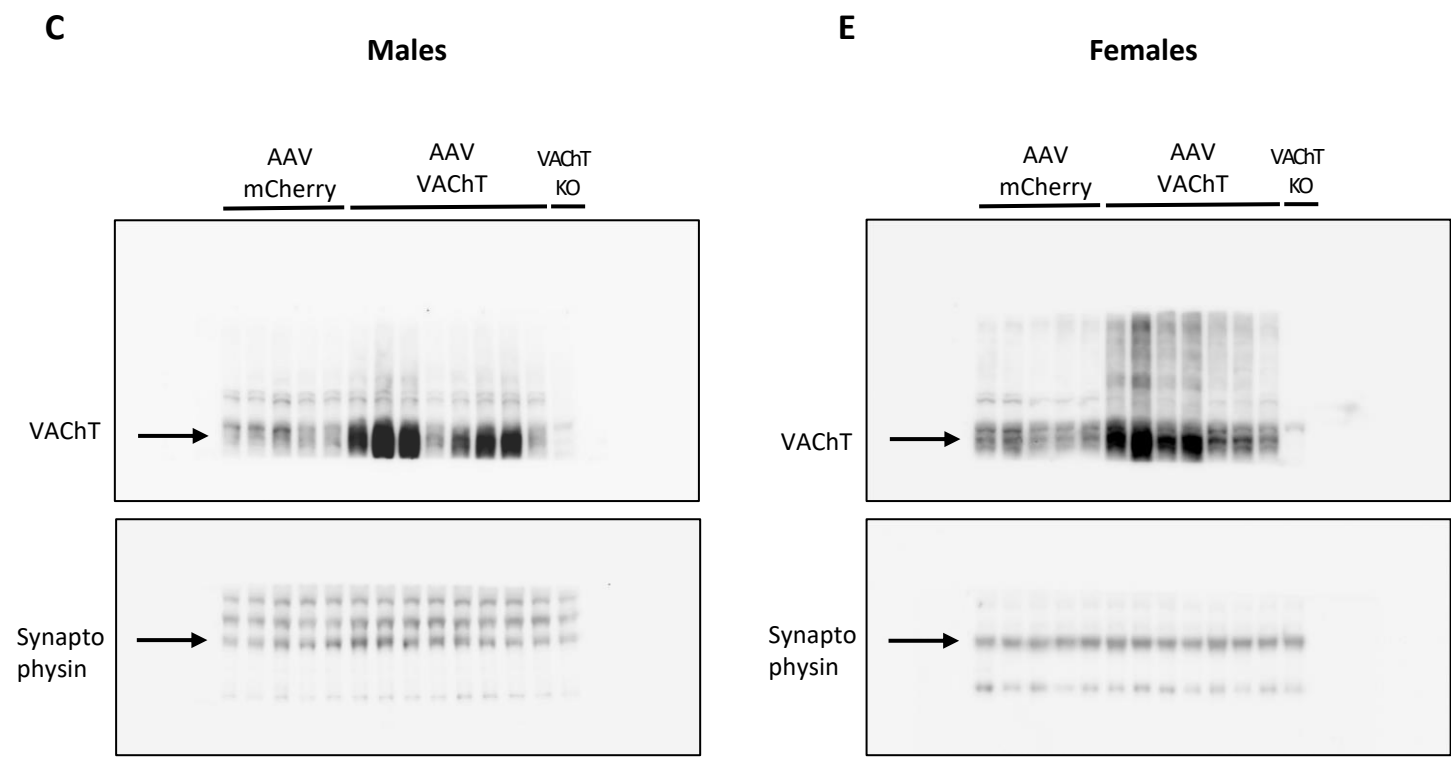


Fig. 5. Increased VChT expression ameliorates amyloid pathology in *App^{NL-F}* males but not in females. (C) Immunoblot of VChT expression in the cortex of AAV-VChT-injected *App^{NL-F}* males at 12 months of age compared to AAV-mCherry-injected controls. Synapto physin (syn) was used as loading control. (E) Immunoblot of VChT expression in the cortex of AAV-VChT-injected *App^{NL-F}* females at 12 months of age compared to AAV-mCherry-injected controls. Synapto physin (syn) was used as loading control.

- Prior to the addition of primary antibody, membranes were cut at around 50 kDa to allow the incubation with different antibodies simultaneously.