

Figure 3

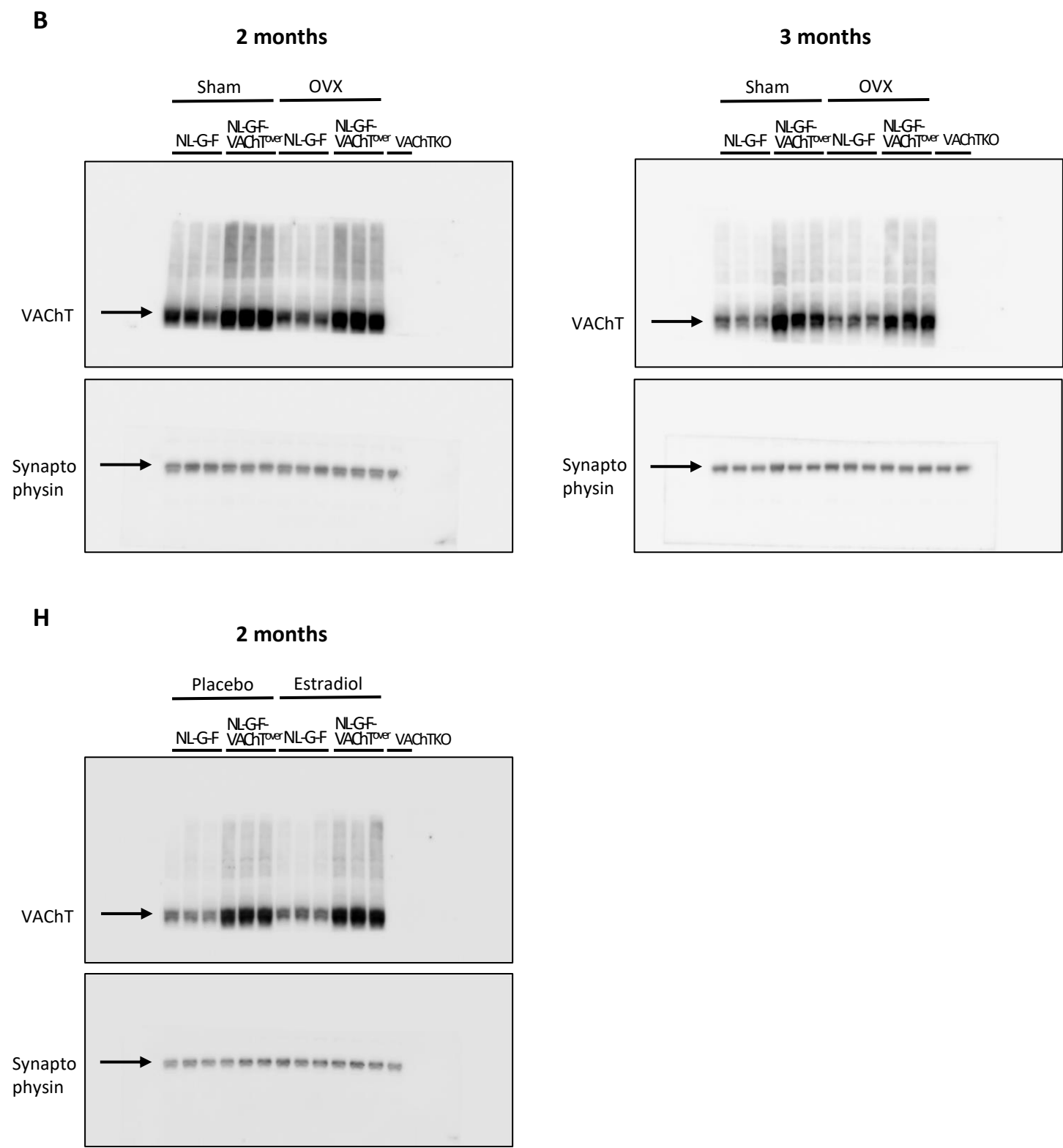


Fig. 3. Ovariectomy decreases amyloid pathology in *App*^{NL-G-F-VACHT^{over}} females, and the effect is blocked by estradiol. (B) Immunoblots of VACHT expression in the cortex of OVX *App*^{NL-G-F} and *App*^{NL-G-F-VACHT^{over}} females at 2 months and 3 months of age compared to sham-operated controls. Synapto physin (syn) was used as loading control. **(H)** Immunoblot of VACHT expression in the cortex of estradiol-treated OVX *App*^{NL-G-F} and *App*^{NL-G-F-VACHT^{over}} females at 2 months of age compared to placebo-treated controls. Synapto physin (syn) was used as loading control.

- Prior to the addition of primary antibody, membranes were cut at around 50 kDa to allow the incubation with different antibodies simultaneously.