

Figure 2

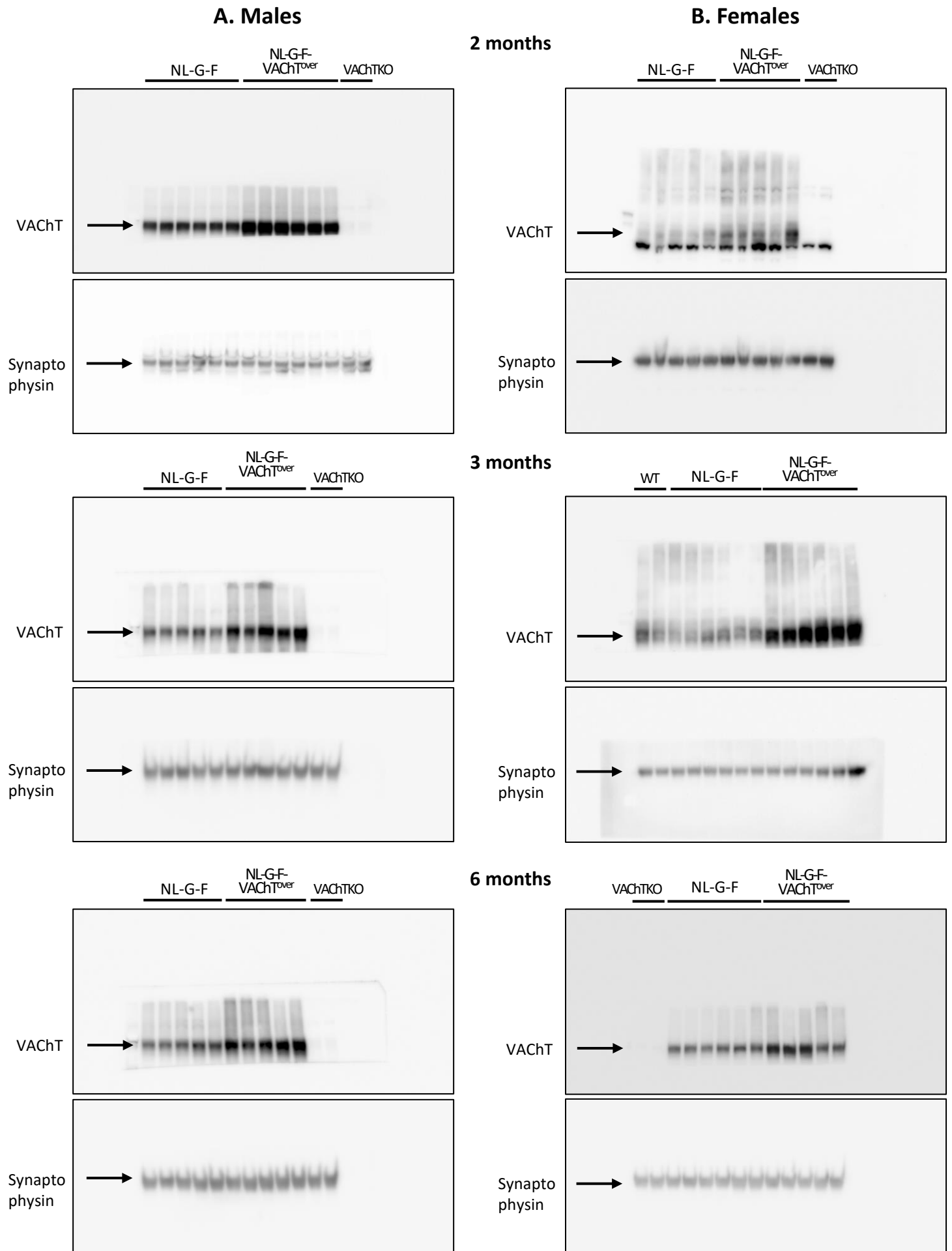


Fig. 2. VACHT overexpression mitigates amyloid pathology in *App*^{NL-G-F} males but not in females. (A and B) Immunoblots of VACHT in the cortex of *App*^{NL-G-F}-VACHT^{over} (A) males and (B) females at 2 months, 3 months, and 6 months of age compared to *App*^{NL-G-F} controls. Synaptophysin (syn) was used as loading control.

- Prior to the addition of primary antibody, membranes were cut at around 50 kDa to allow the incubation with different antibodies simultaneously.