

Supplementary Material 2

Fig 1: Forest plots of the recurrence rate of subgroup analysis by the number of sample size.

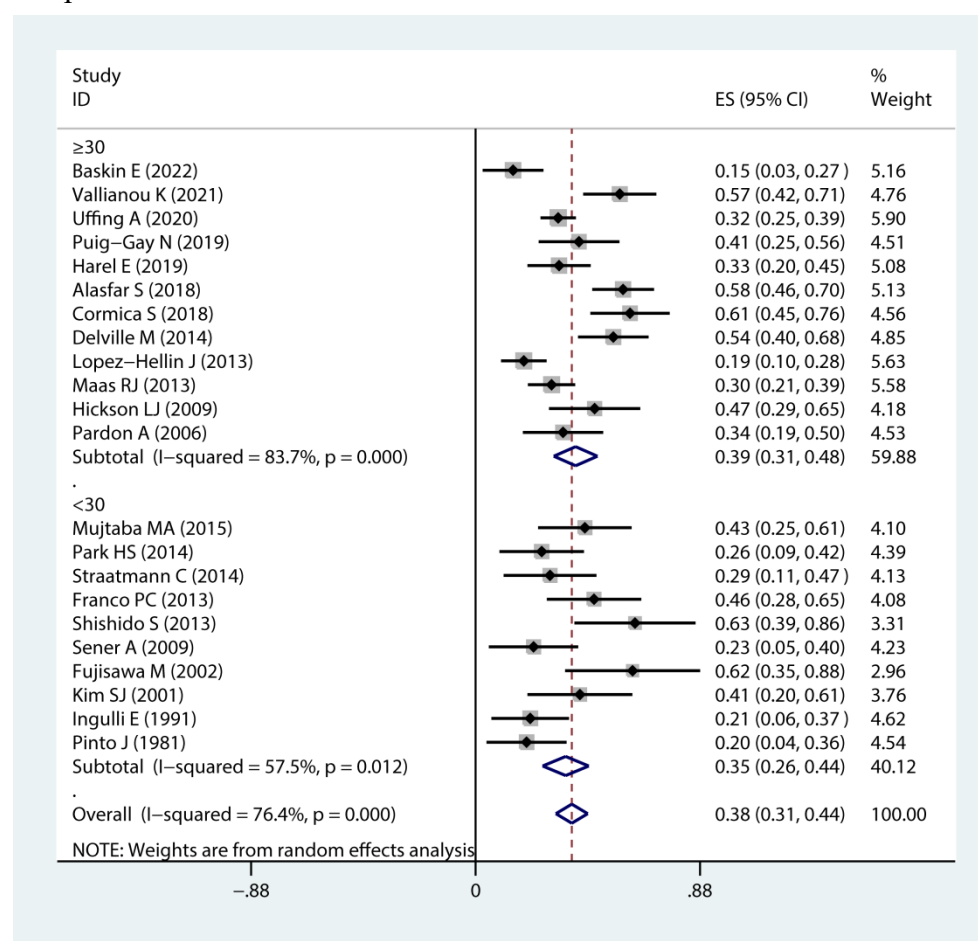


Fig 2: Sensitivity analysis for proteinuria before KT in the meta-analysis.

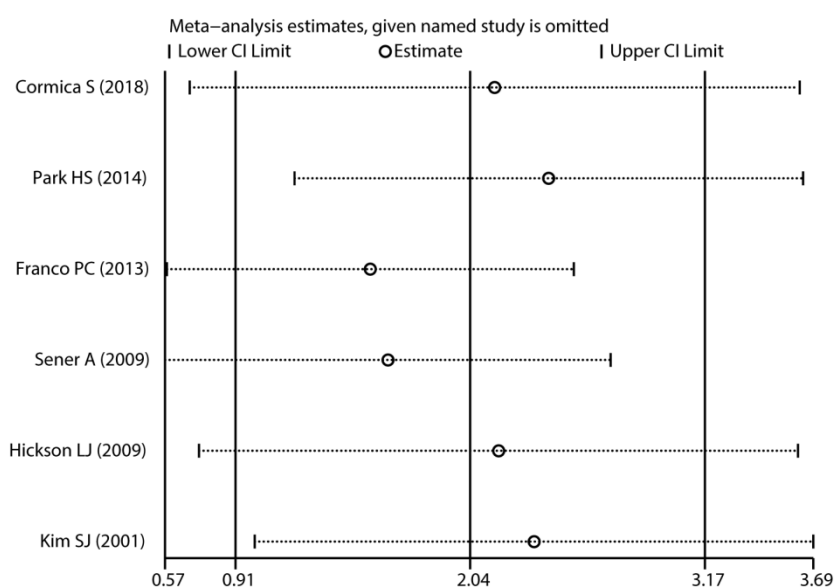


Fig 3: Forest plots of age at transplantation.

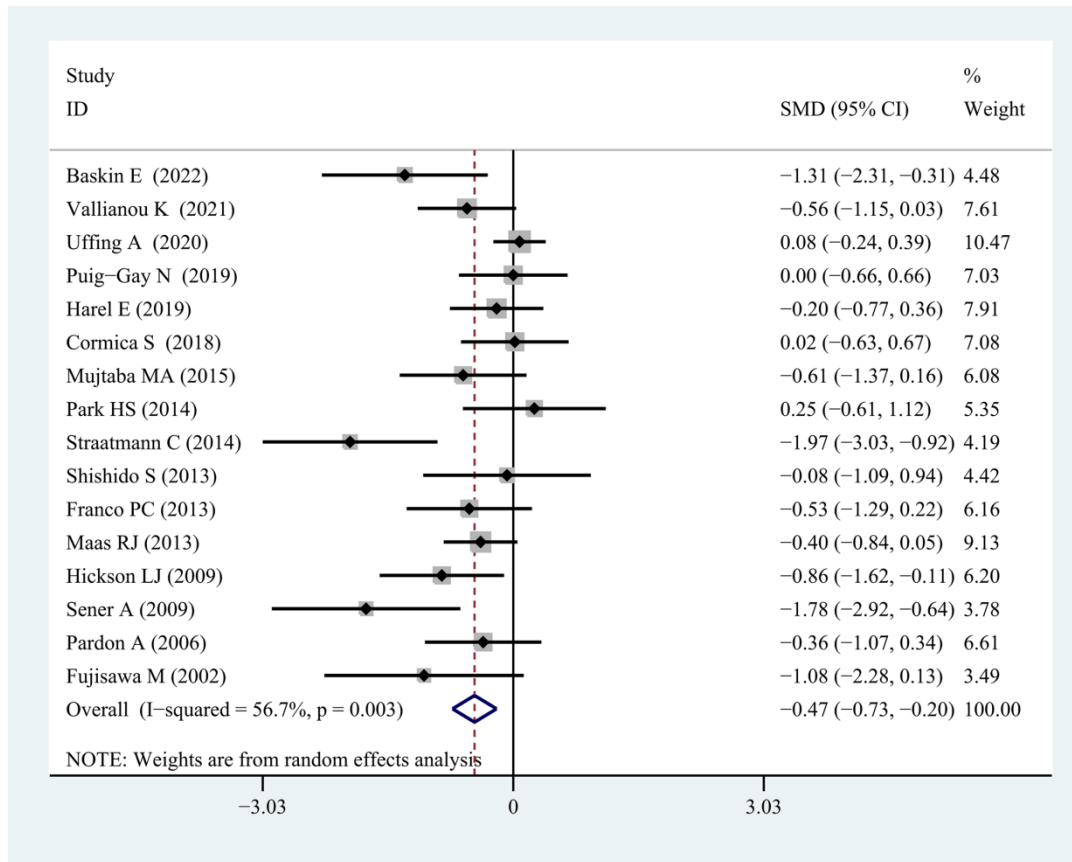


Fig 4: Forest plots of age at onset.

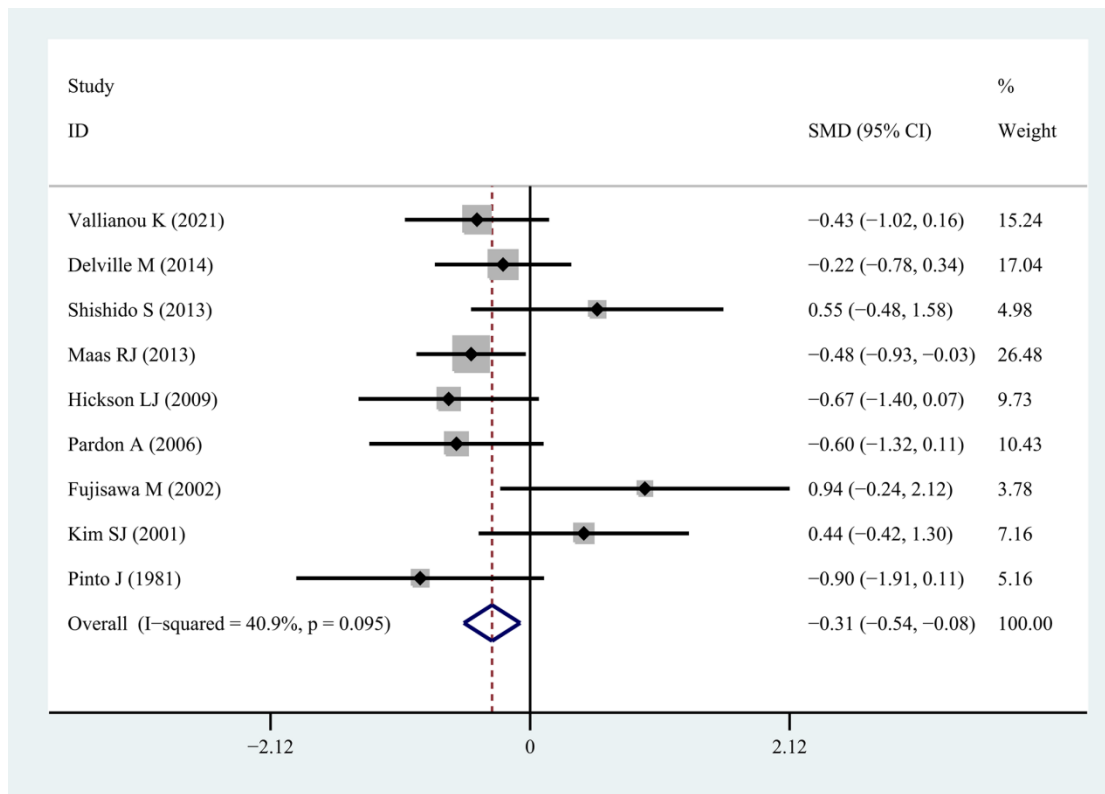


Fig 5: Forest plots of time from diagnosis to kidney failure.

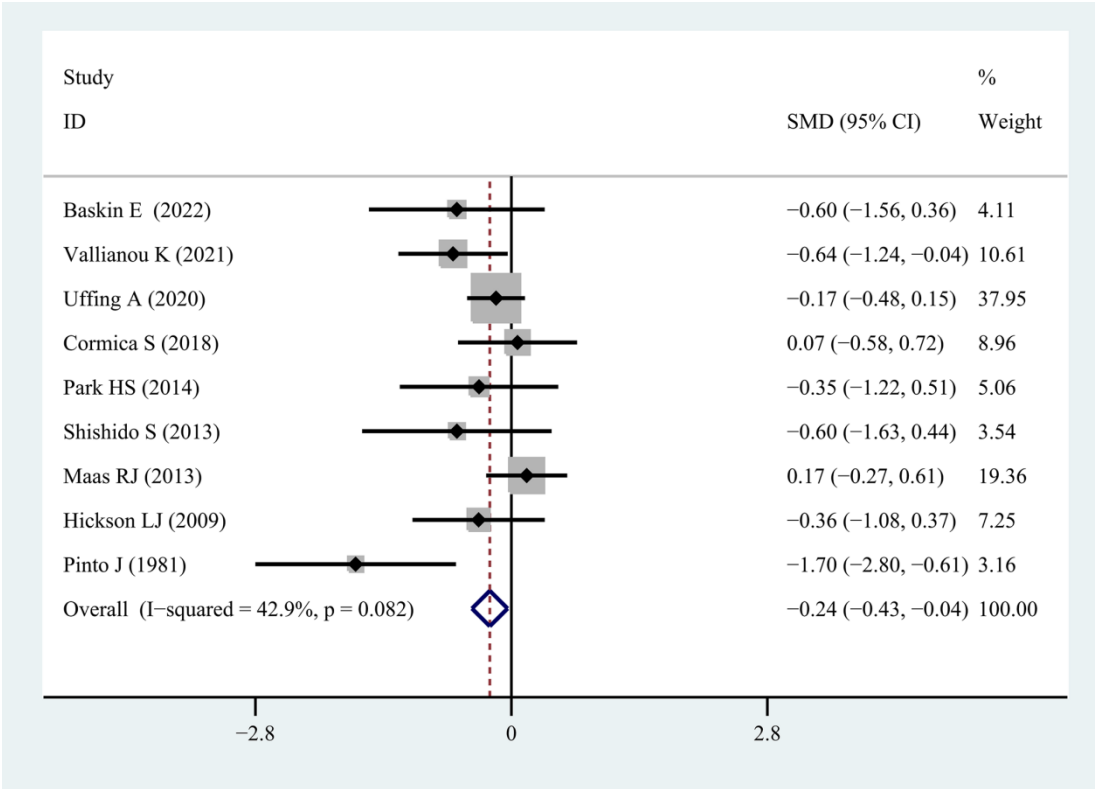


Fig 6: Forest plots of HLA mismatches.

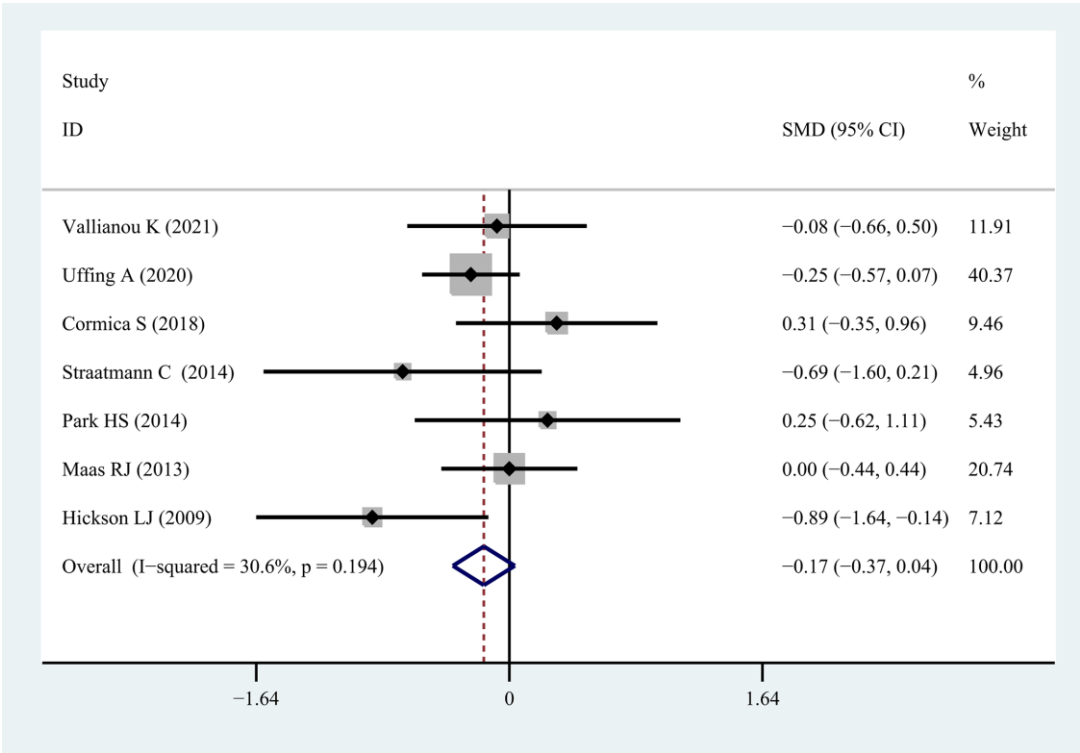


Fig 7: Forest plots of proteinuria before KT.

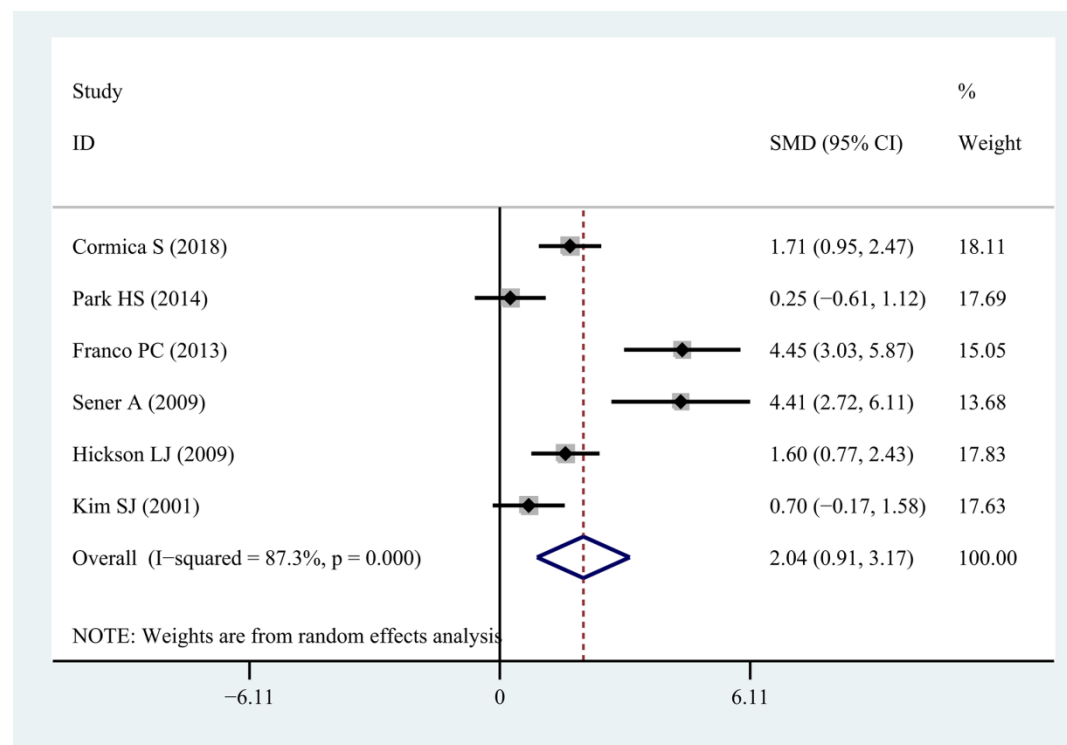


Fig 8: Forest plots of duration of dialysis before KT.

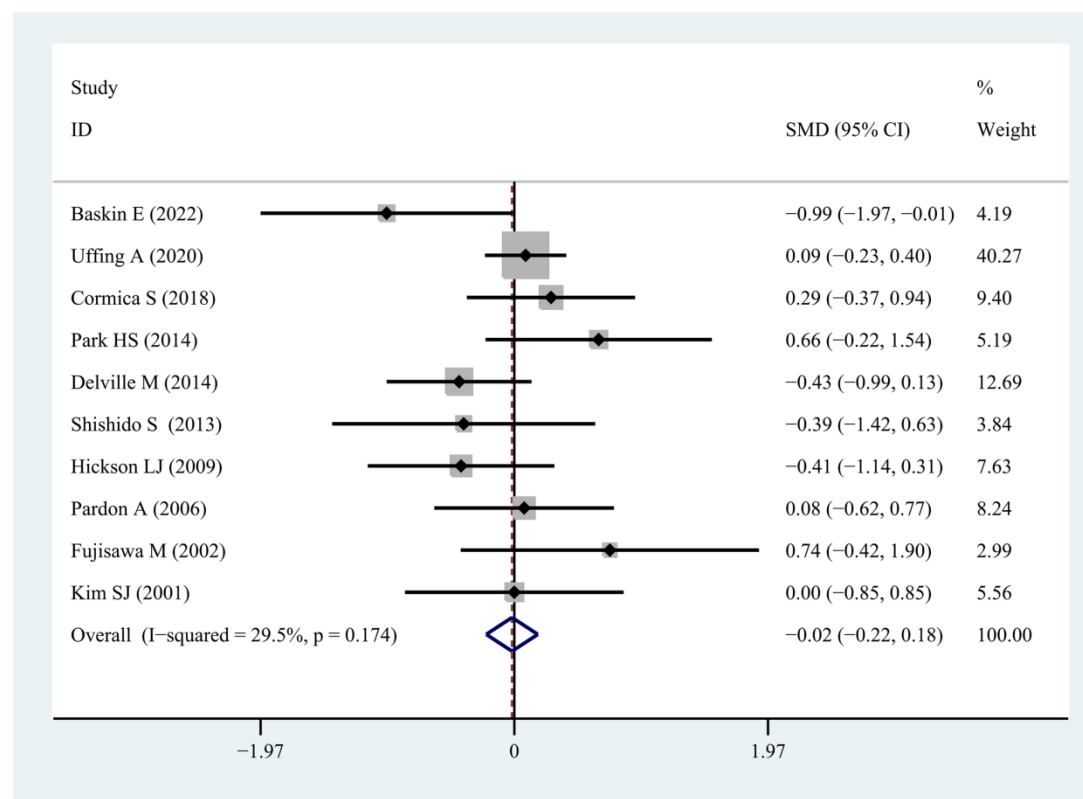


Fig 9: Forest plots of sex.

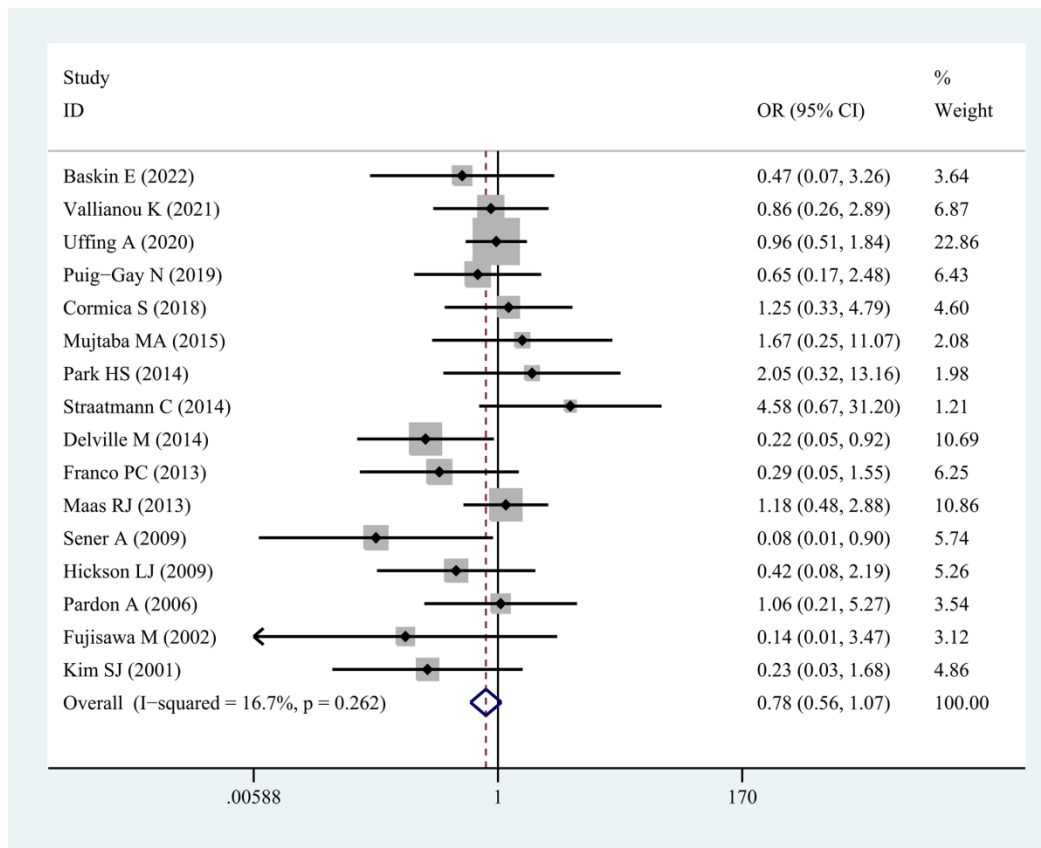


Fig 10: Forest plots of living donor.

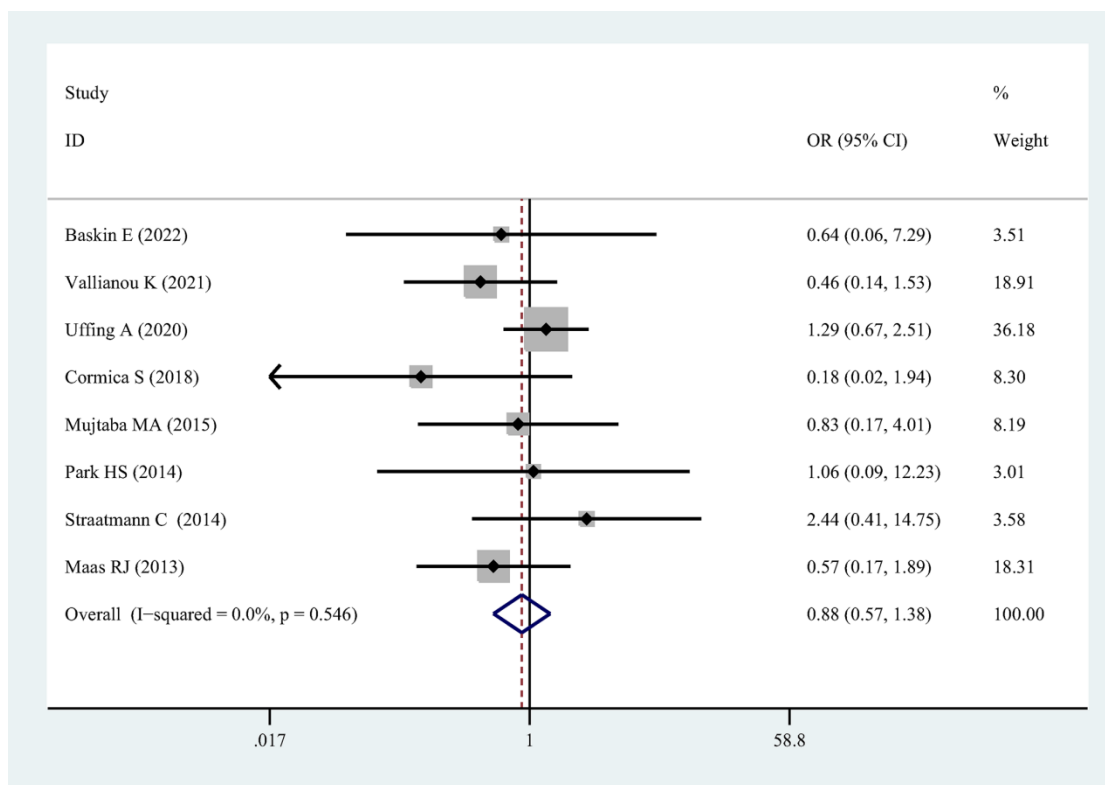


Fig 11: Forest plots of related donor.

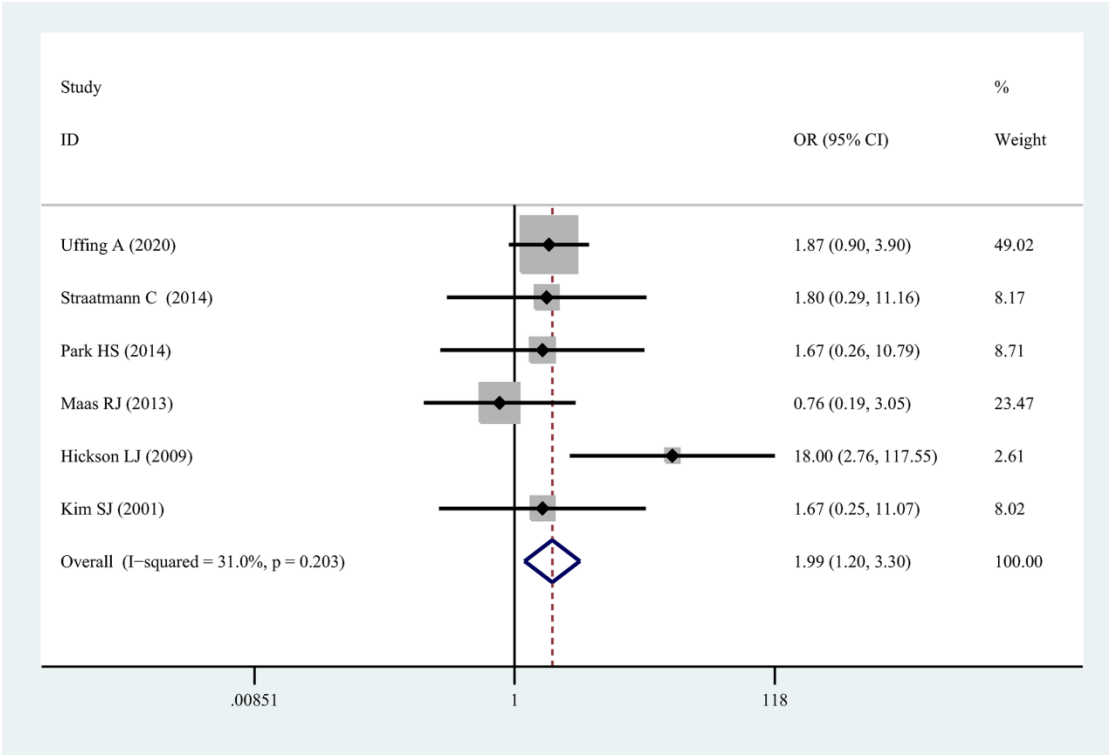


Fig 12: Forest plots of tacrolimus use.

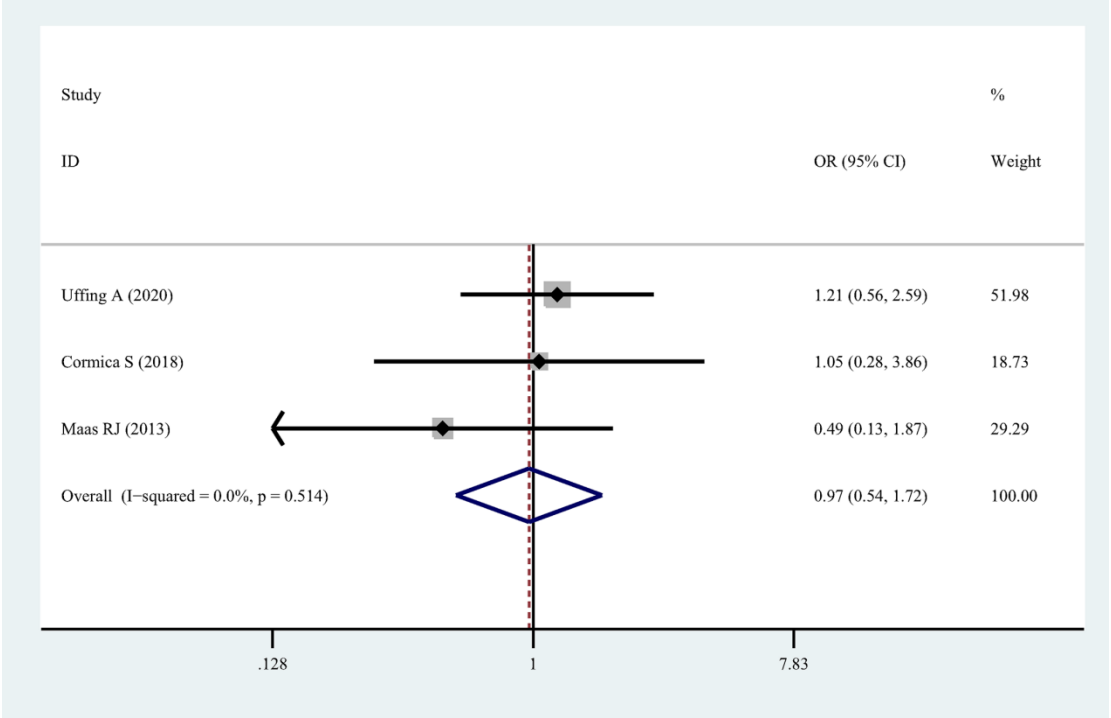


Fig 13: Forest plots of previous transplantation.

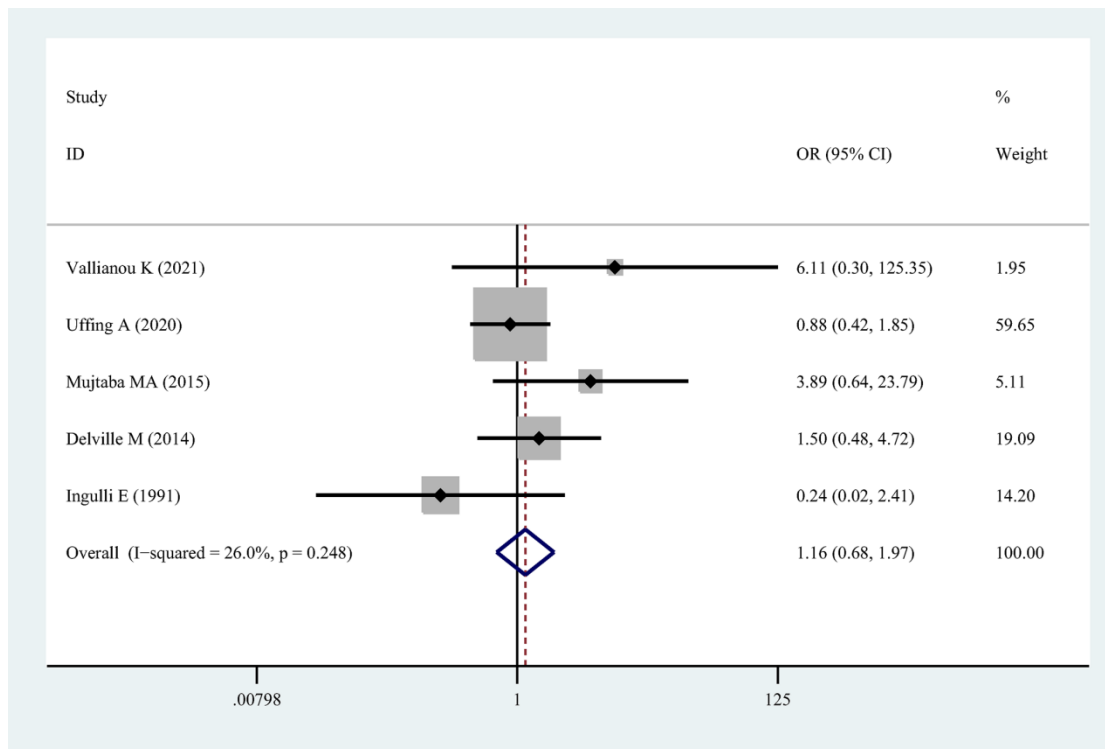


Fig 14: Forest plots of nephrectomy of native kidneys.

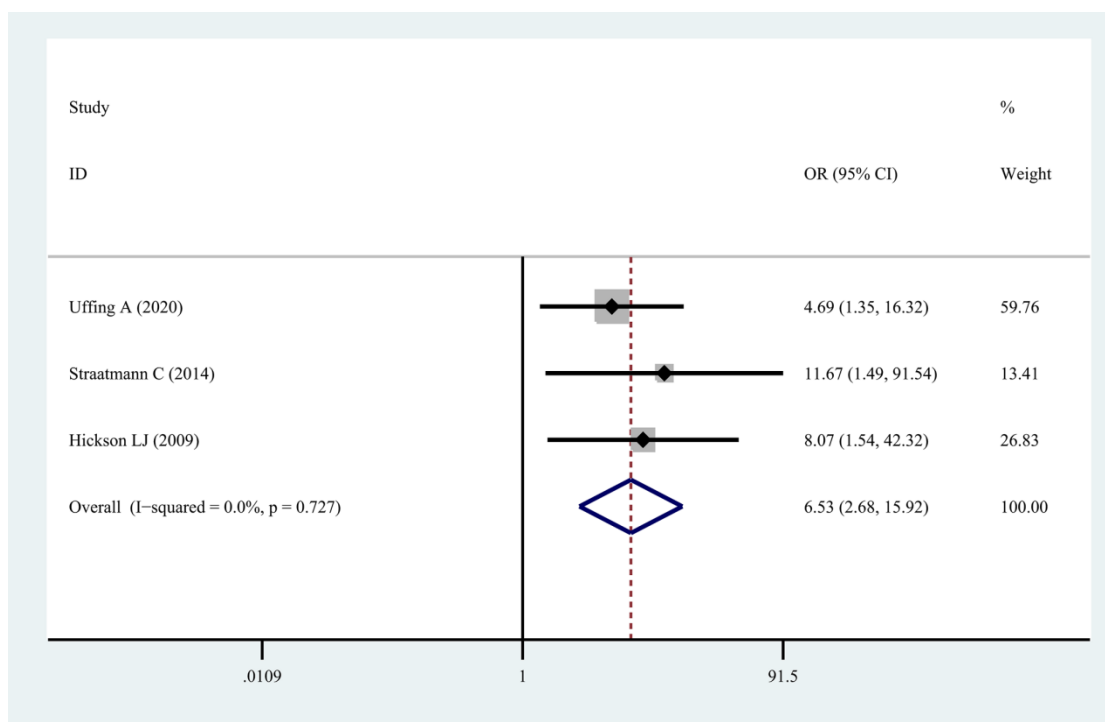


Fig 15: Funnel chart results of age at transplantation.

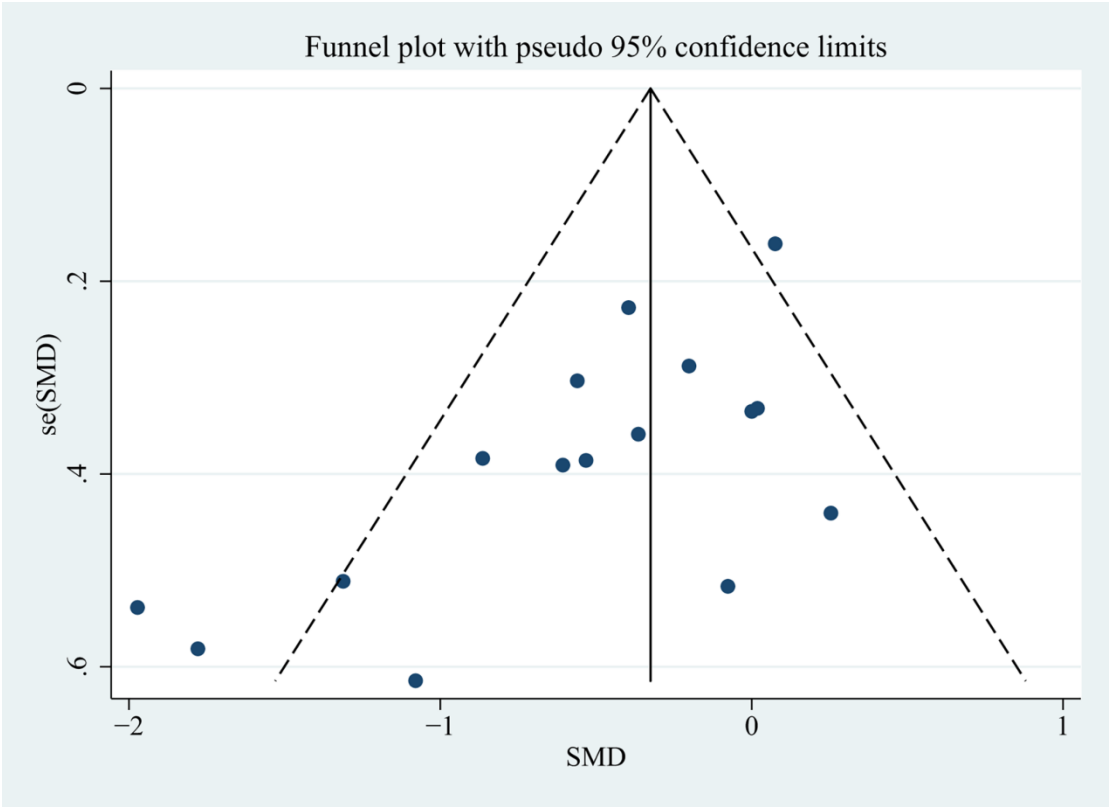


Fig 16: Funnel chart results of sex.

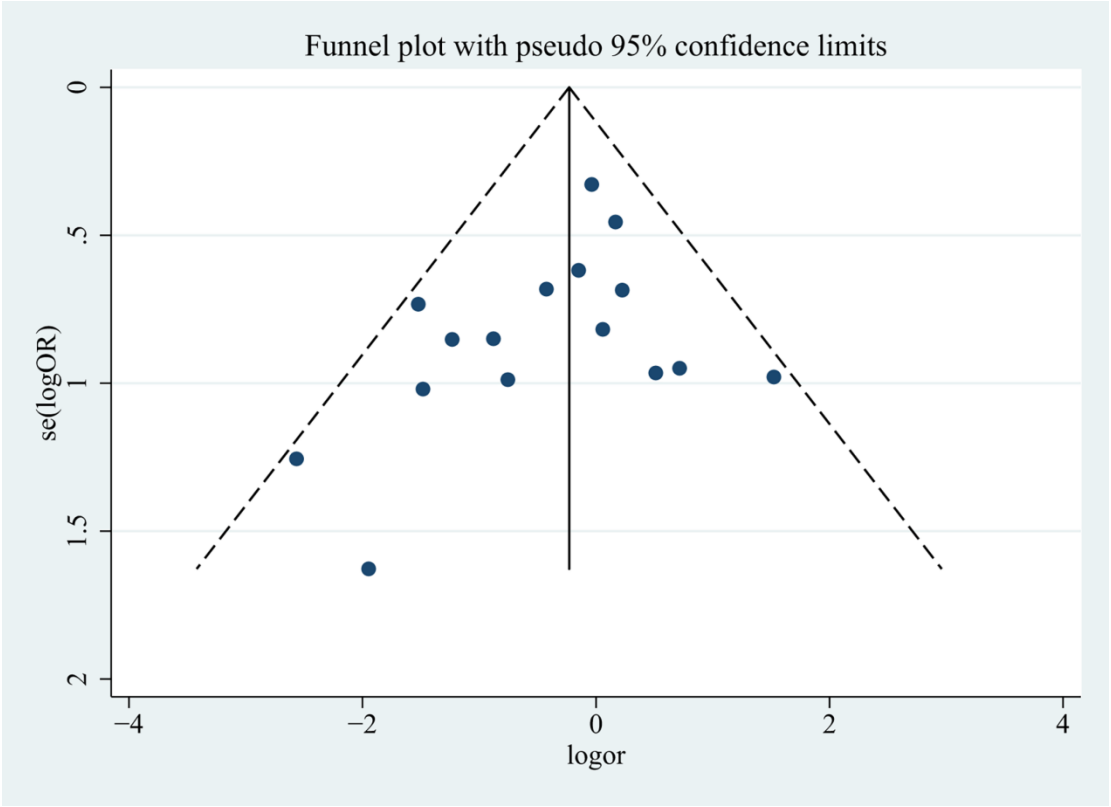


Fig 17: Funnel chart results of duration of dialysis before KT.

