

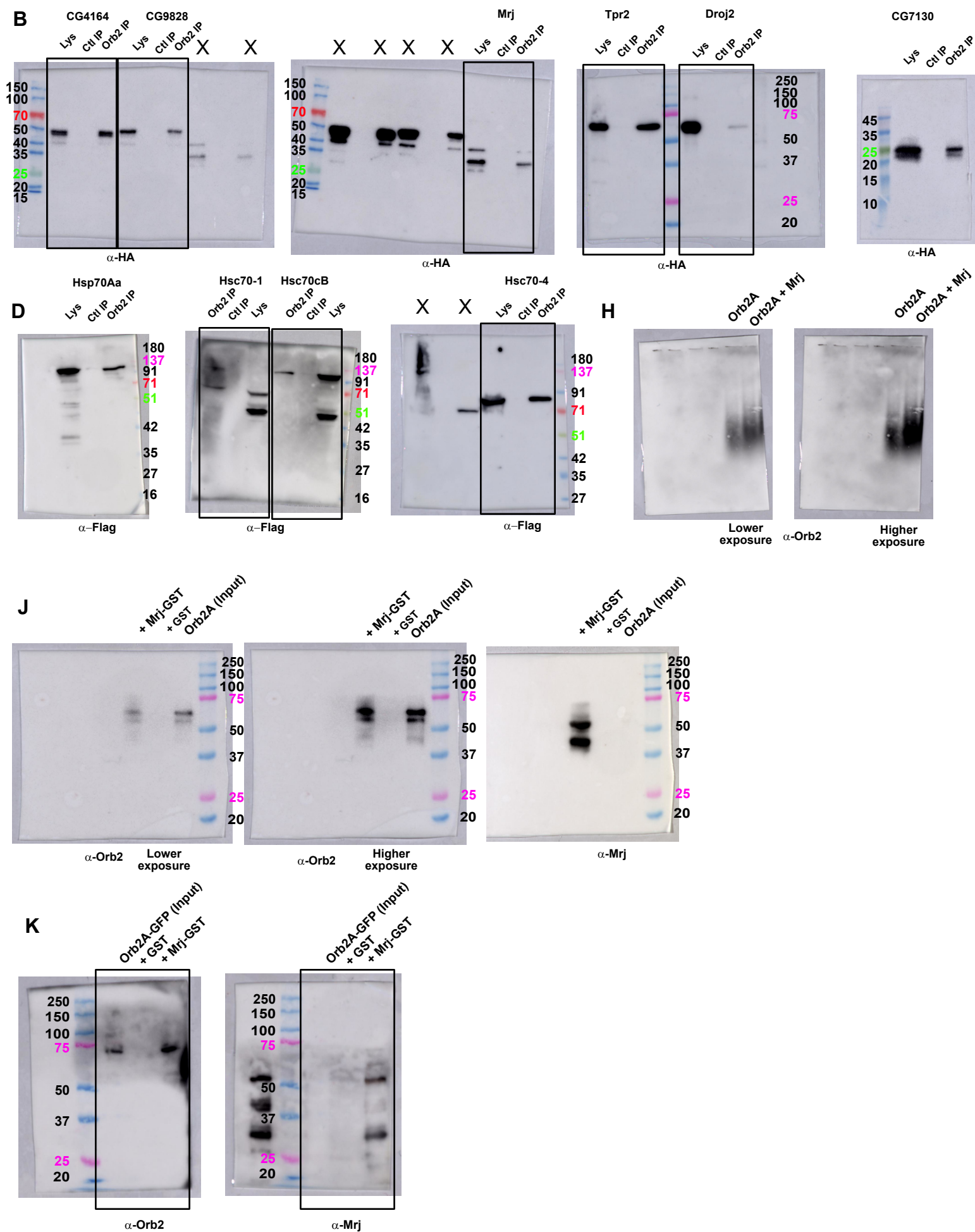
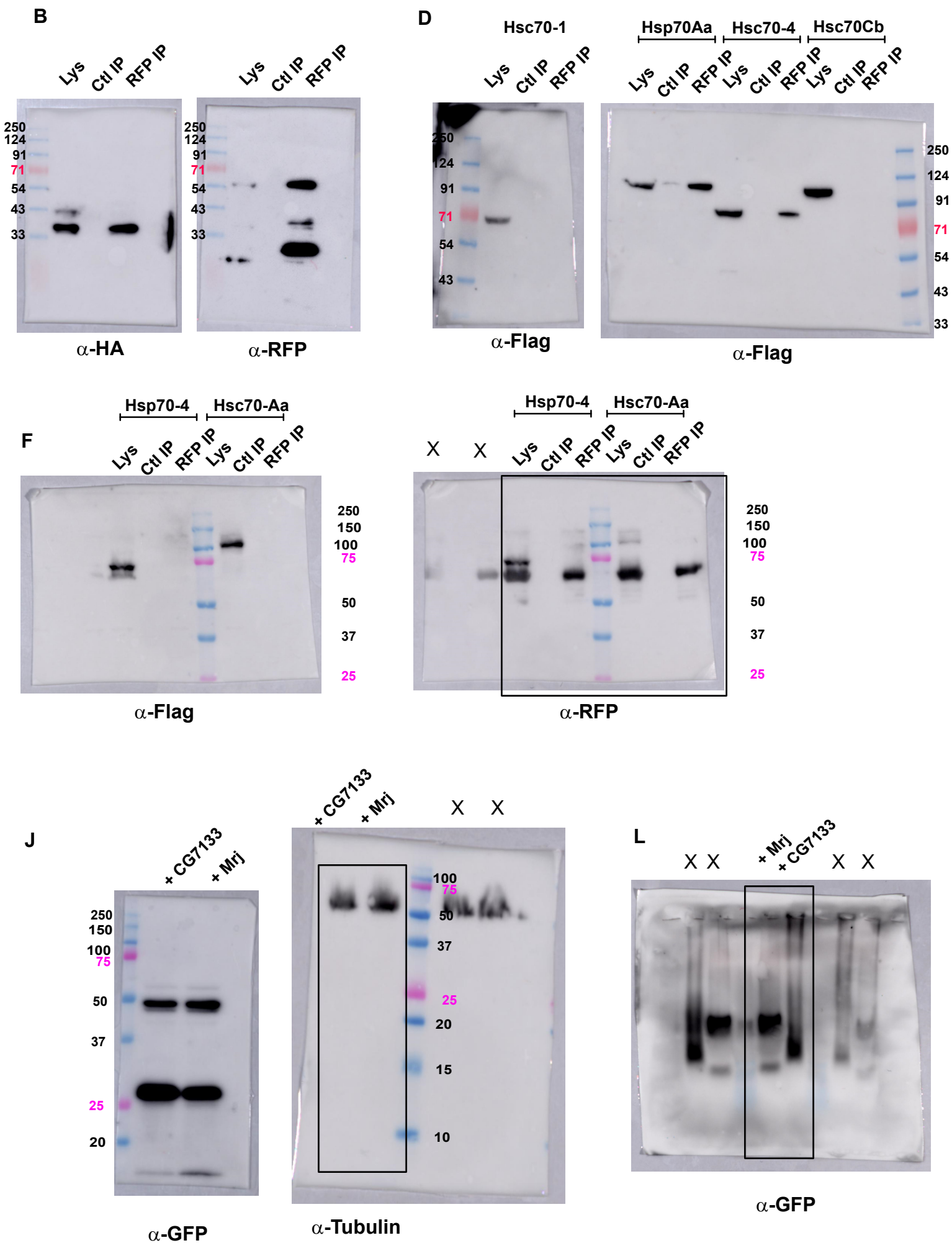
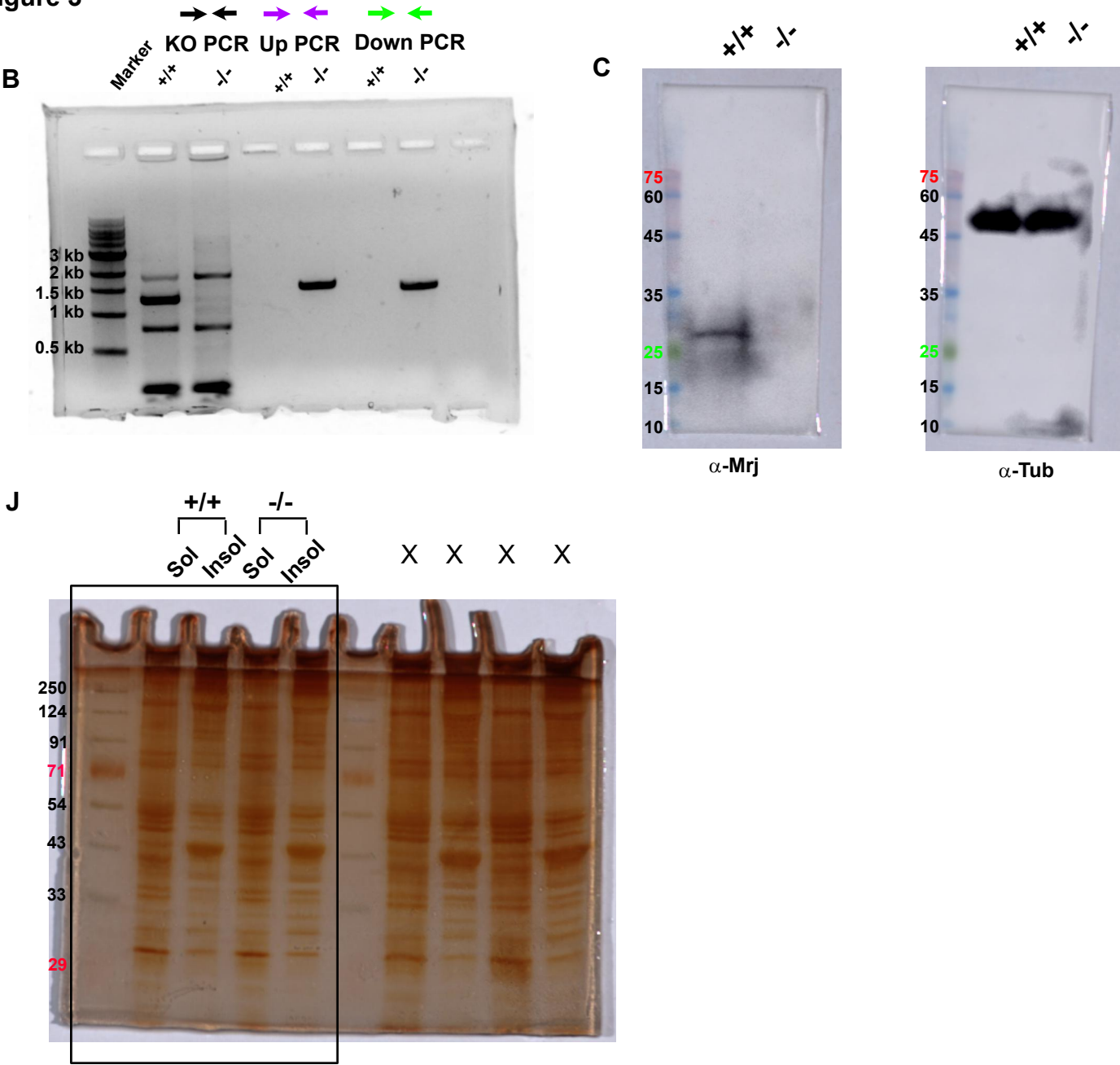
Figure 1

Figure 2



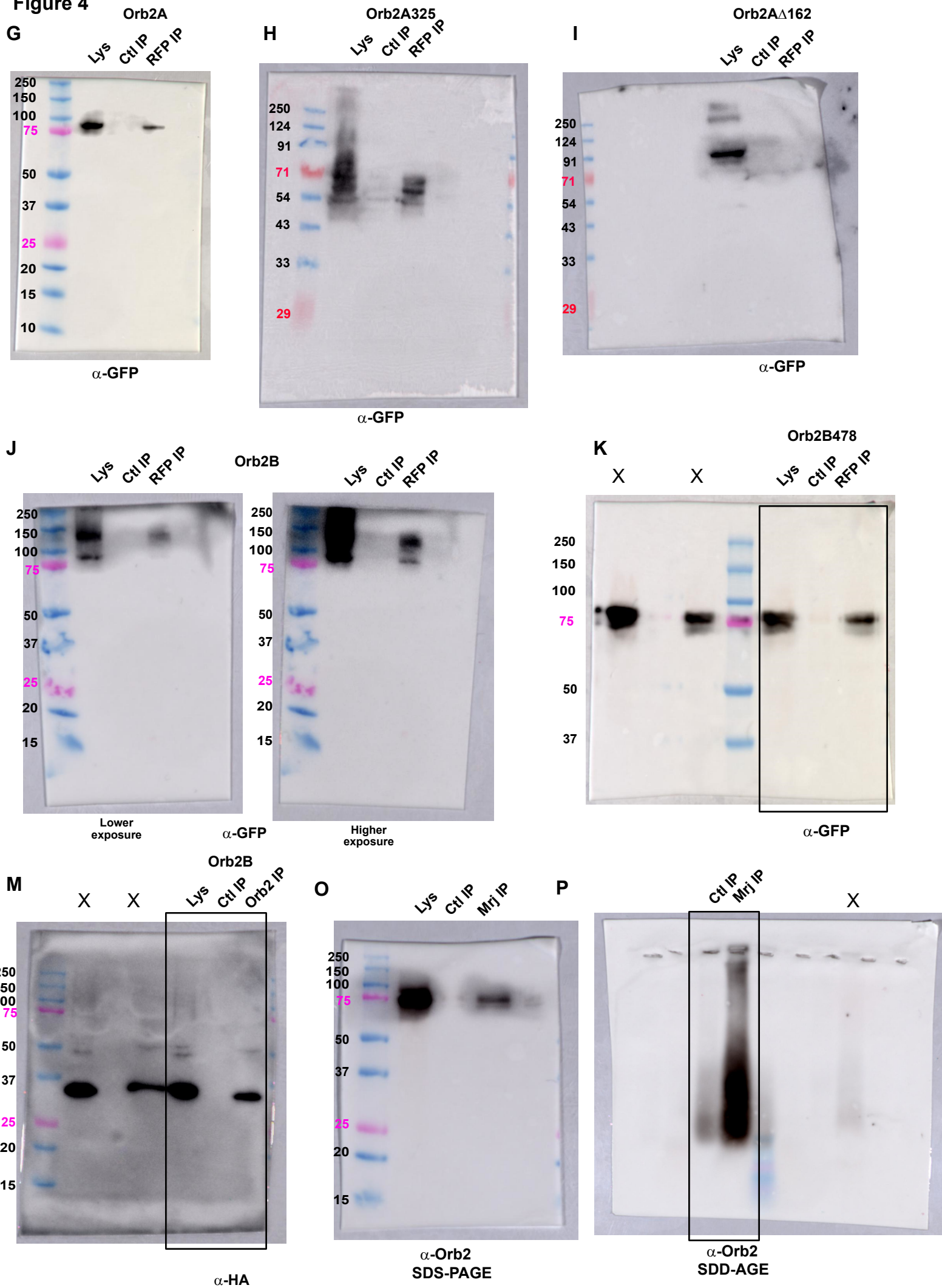
All blots scanned in GE Imager 600

Figure 3



All blots and agarose gel scanned in GE Imager 600

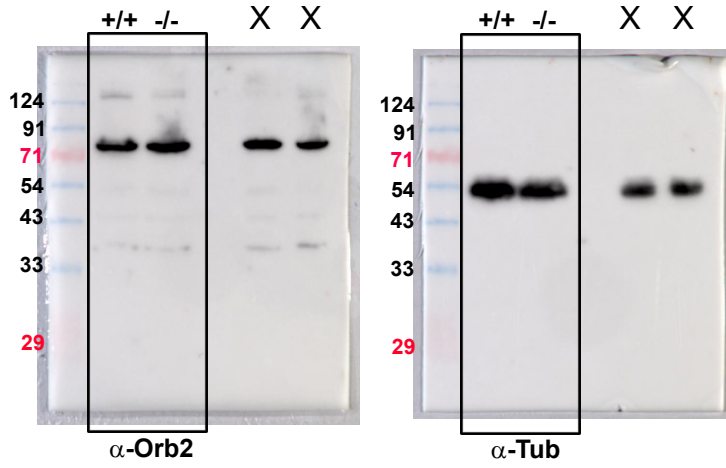
Figure 4



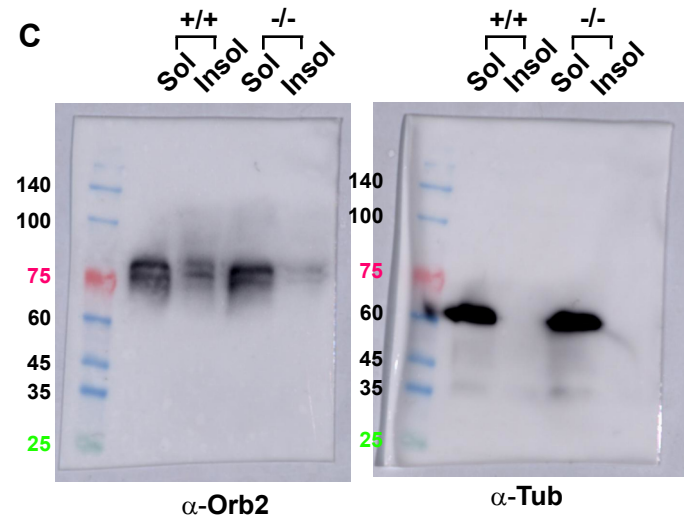
All blots scanned in GE Imager 600

Figure 5

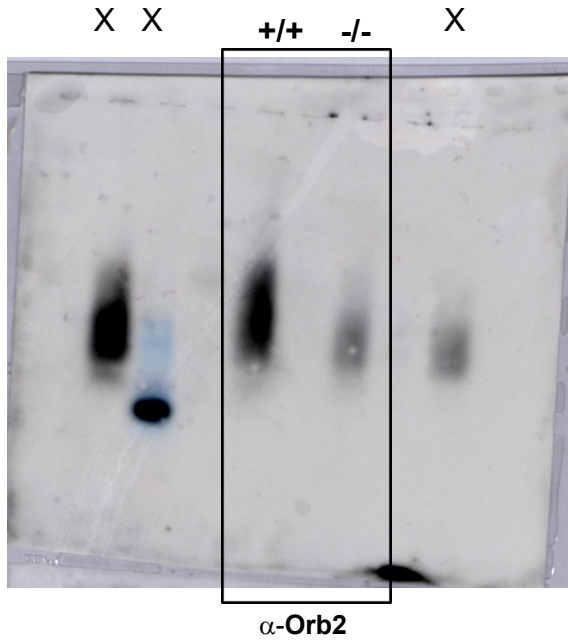
A



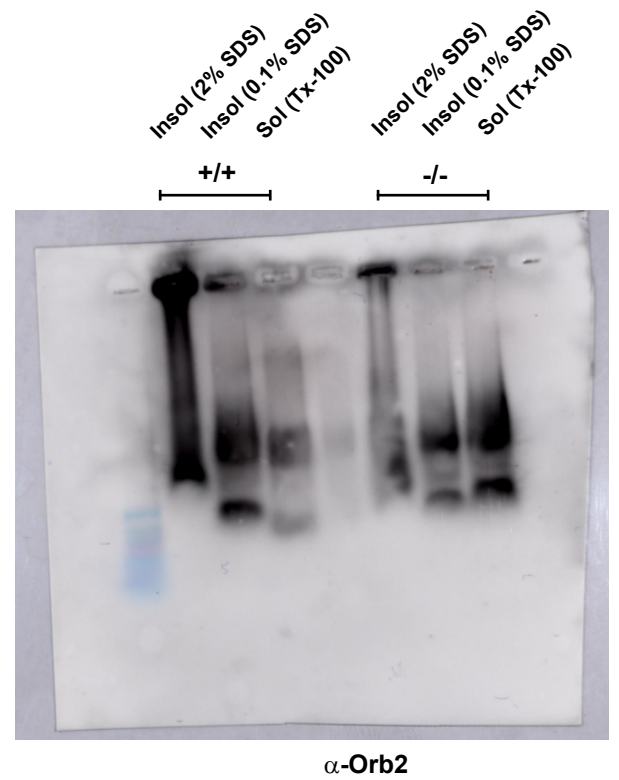
C



F



I



K

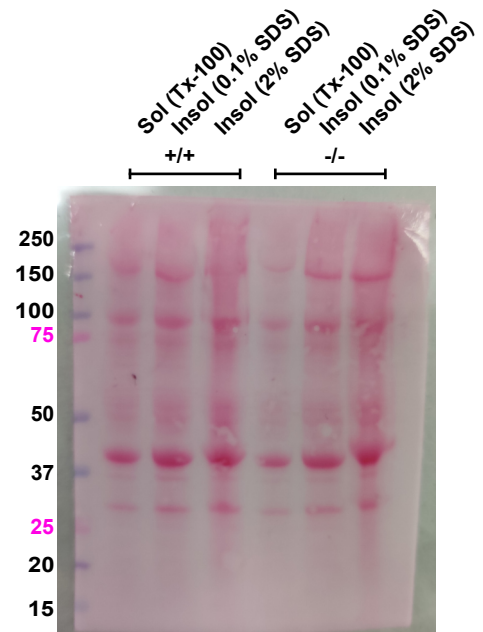
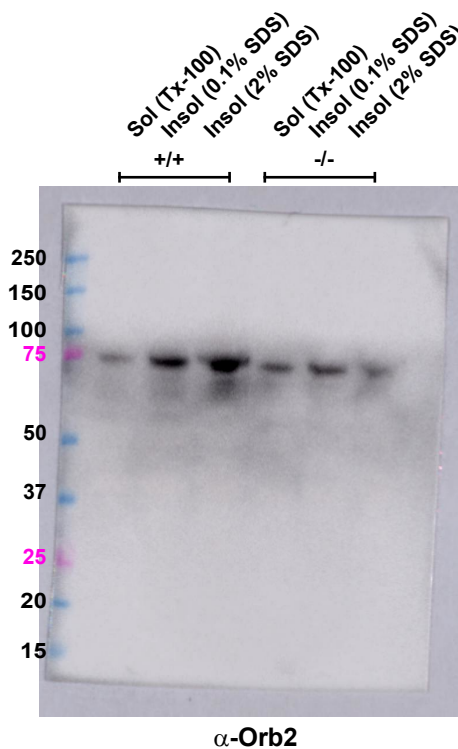
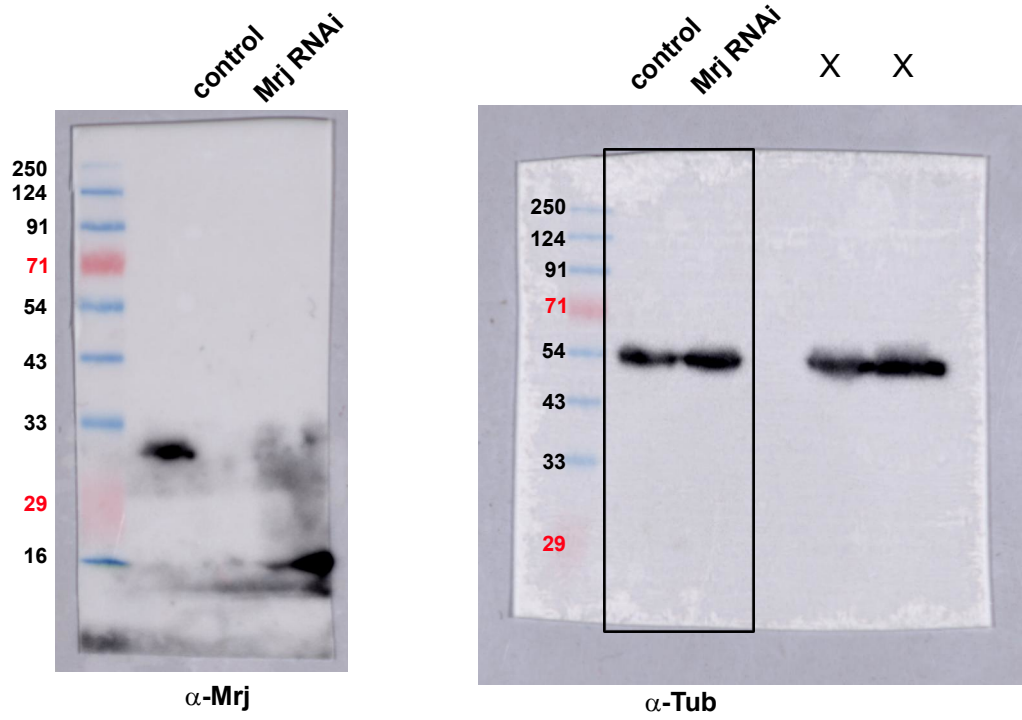


Figure 6

D

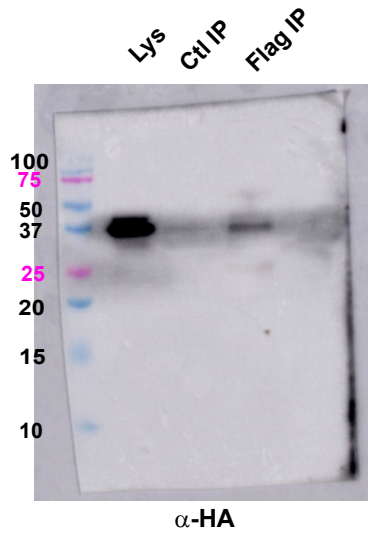


For Tubulin blot 1/3rd of the same lysates as used in the mrj blot were ran on SDS PAGE and processed for western blotting

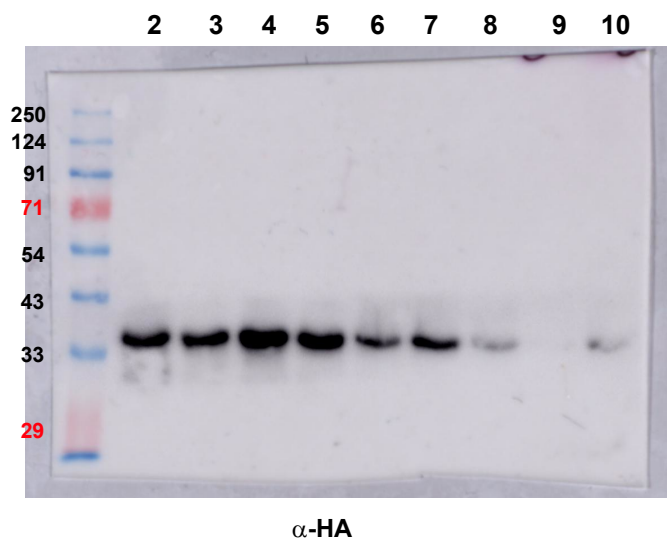
All blots scanned in GE Imager 600

Figure 7

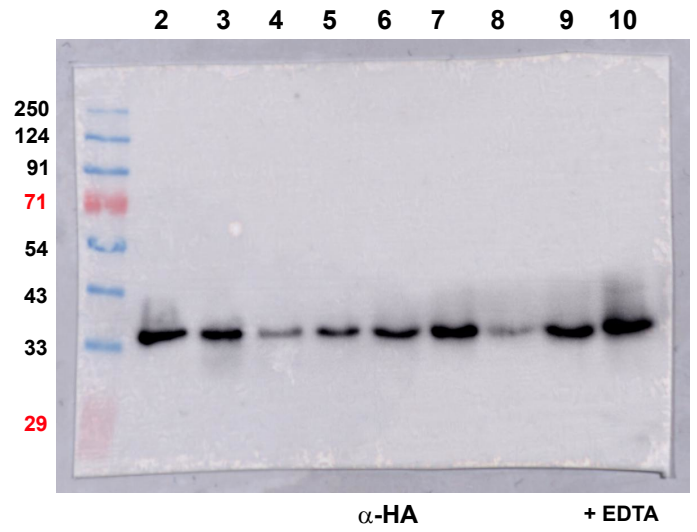
A



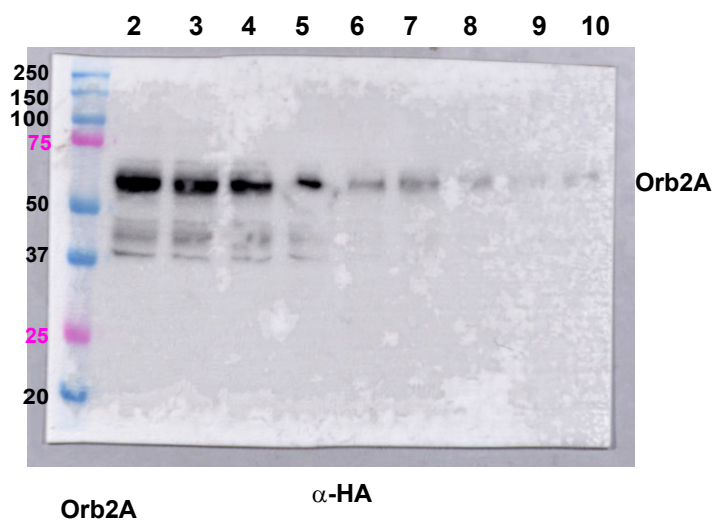
B



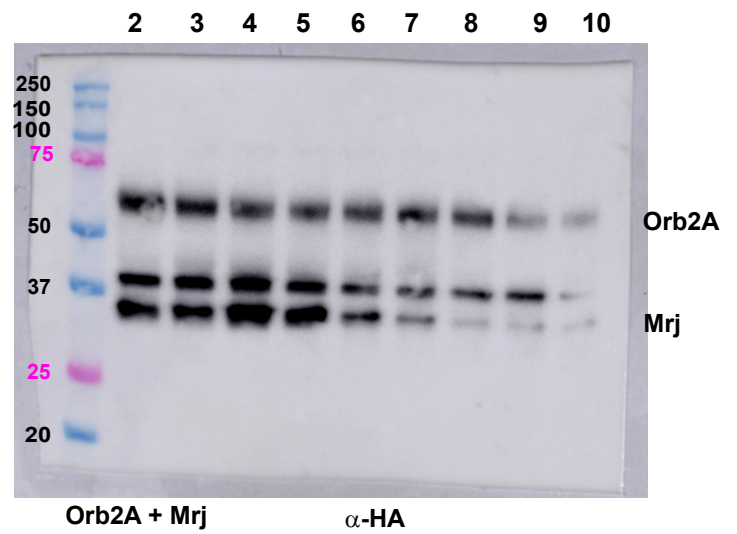
C



F

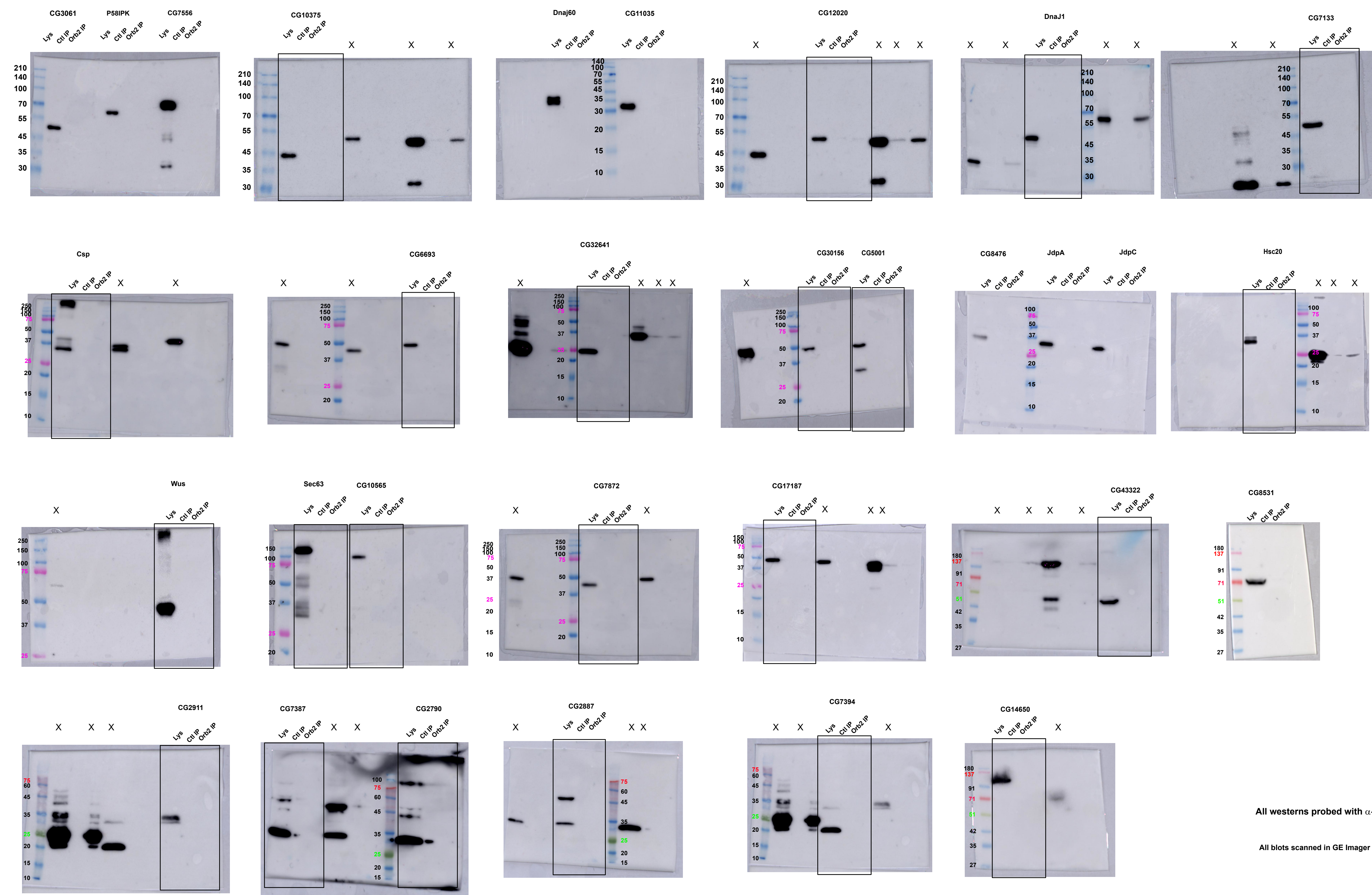


G



All blots scanned in GE Imager 600

S3 Figure

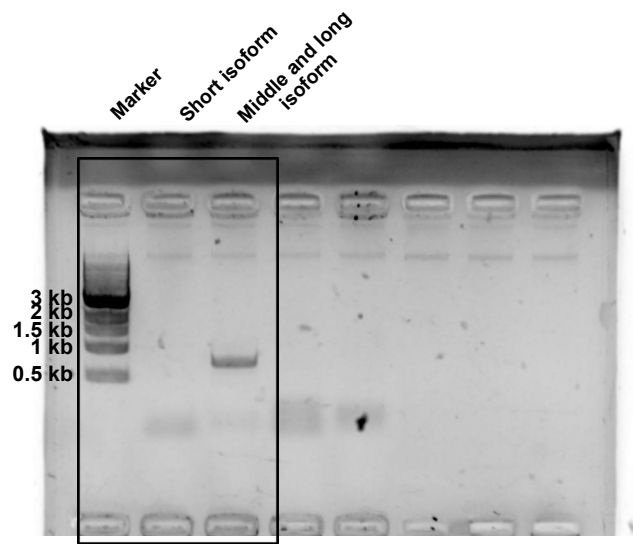


All westerns probed with α -HA Ab

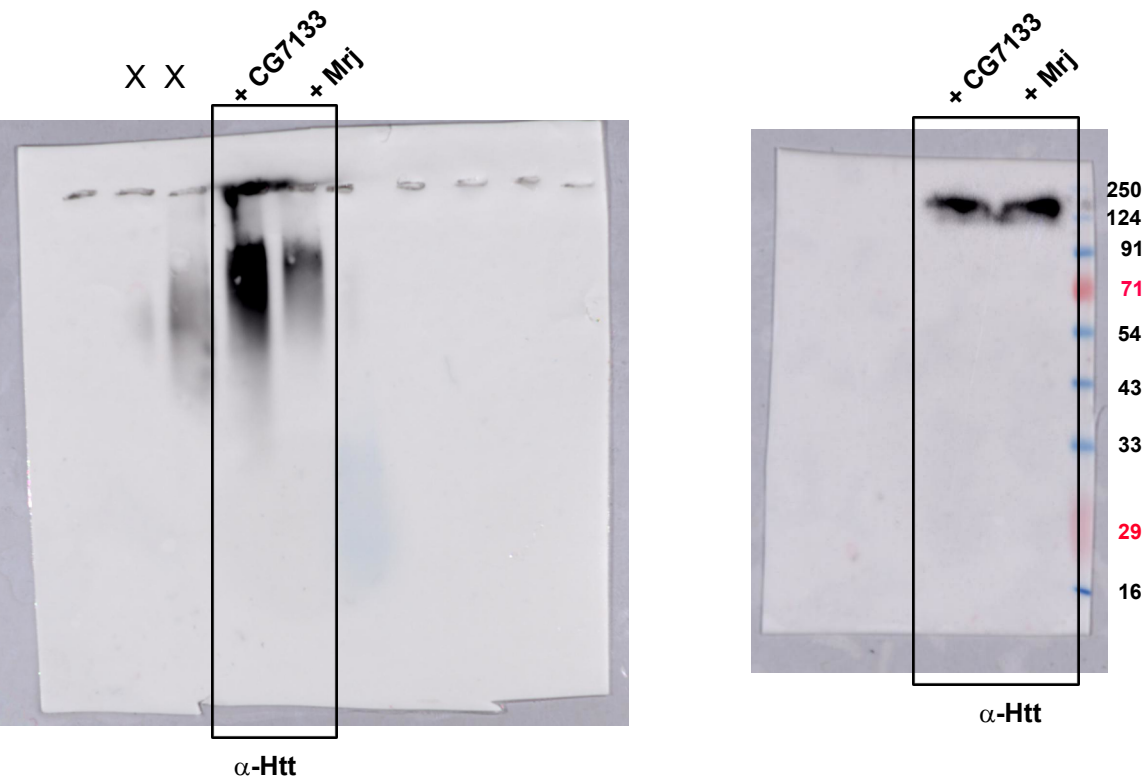
All blots scanned in GE Imager 600

S4 Figure

B



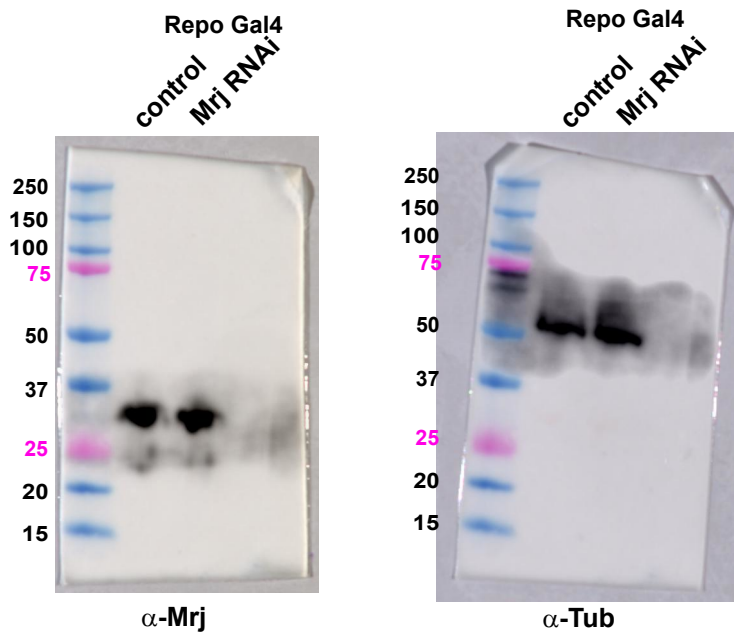
E



All blots scanned in GE Imager 600

S5 Figure

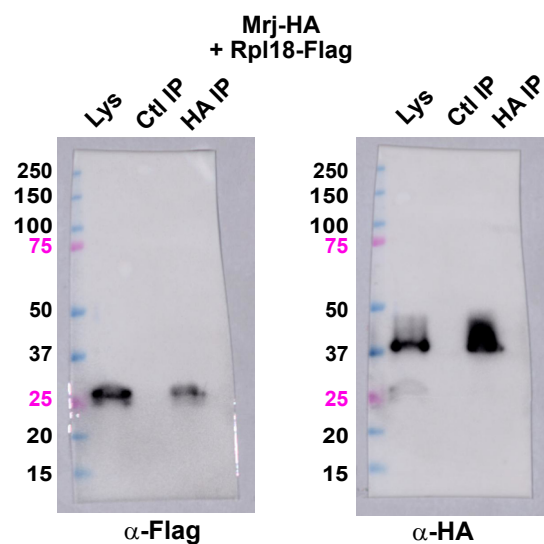
H



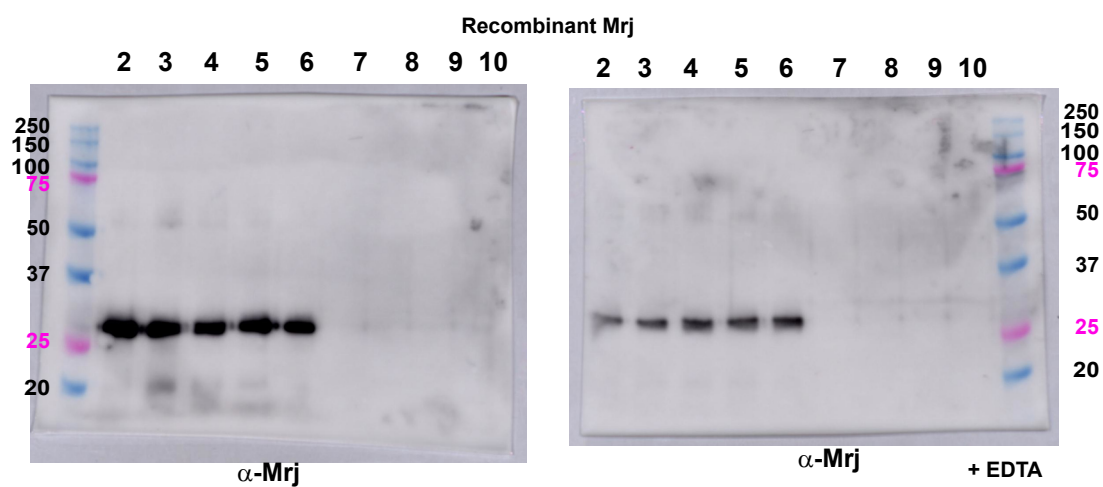
All blots scanned in GE Imager 600

S6 Figure

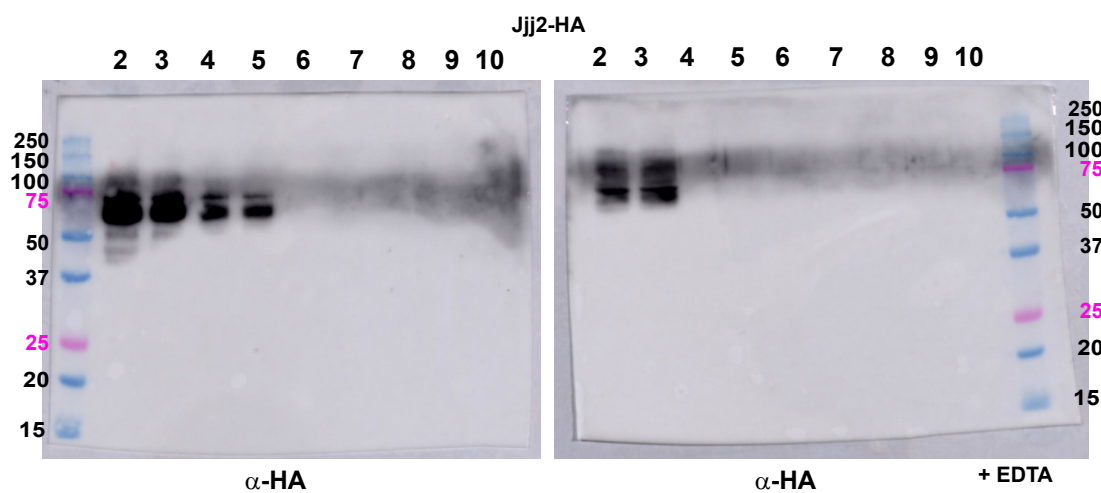
C



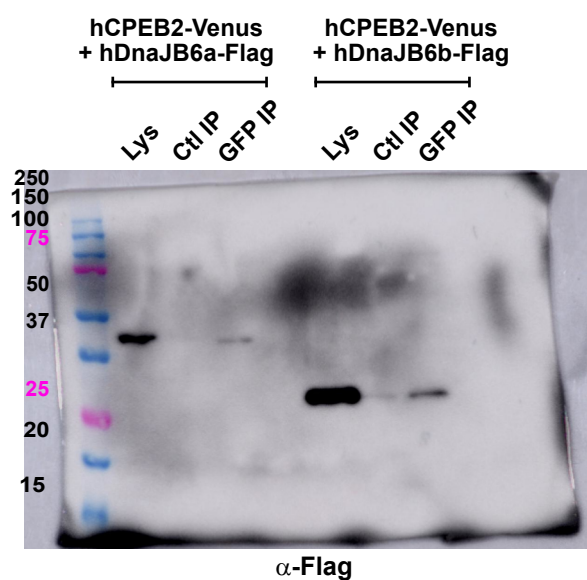
D



E



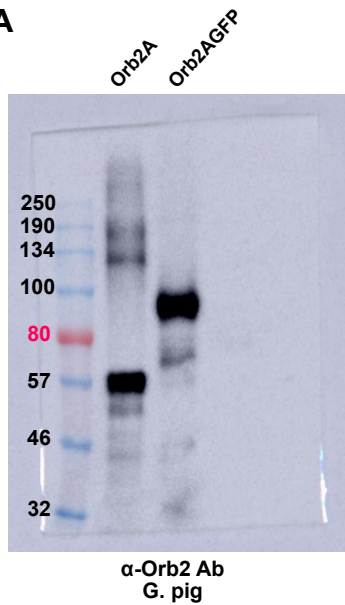
G



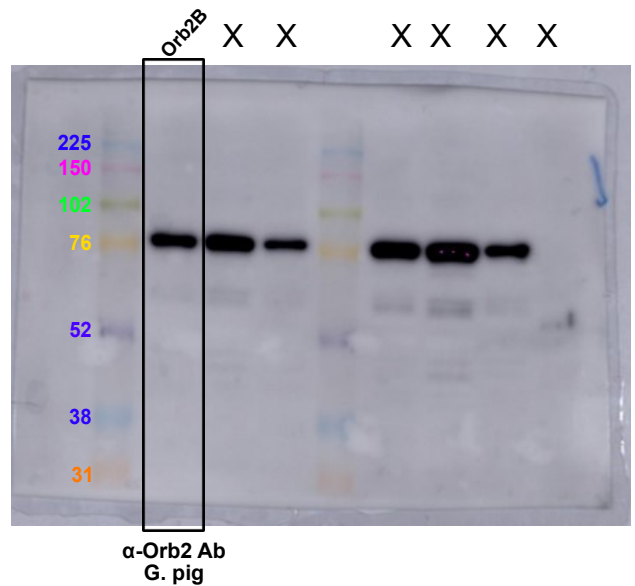
All blots scanned in GE Imager 600

S7 Figure

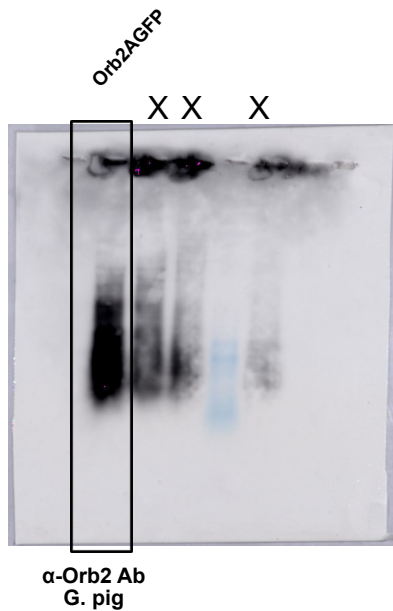
A



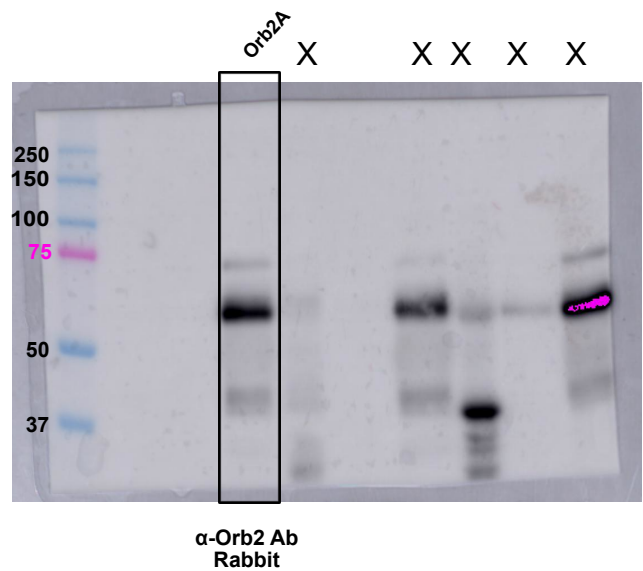
B



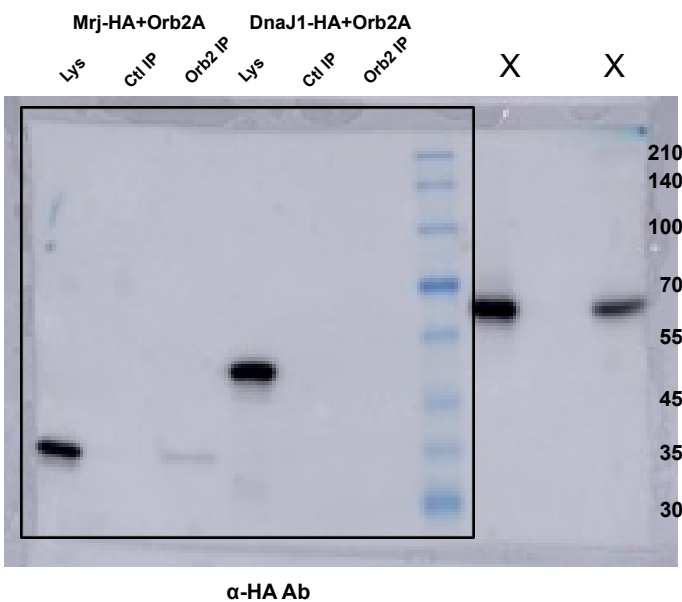
C



D



E



F

