

JOURNAL OF VERTEBRATE PALEONTOLOGY

Distinctive emydopoid dicynodont (Therapsida, Anomodontia) mandibles from the Permian Ruhuhu
and Usili formations (Songea Group), Ruhuhu Basin, Tanzania

KENNETH D. ANGIELCZYK^{*,1} and C.. BARRY COX²; ¹Integrative Research Center, Field Museum
of Natural History, 1400 South Lake Shore Drive, Chicago, Illinois, 60605, USA,
kangielczyk@fieldmuseum.org; ²Forge Cottage, 11 Blacksmith Close, Ashted KT21 2BD, United
Kingdom, barrycox1931@gmail.com

^{*}Corresponding Author.

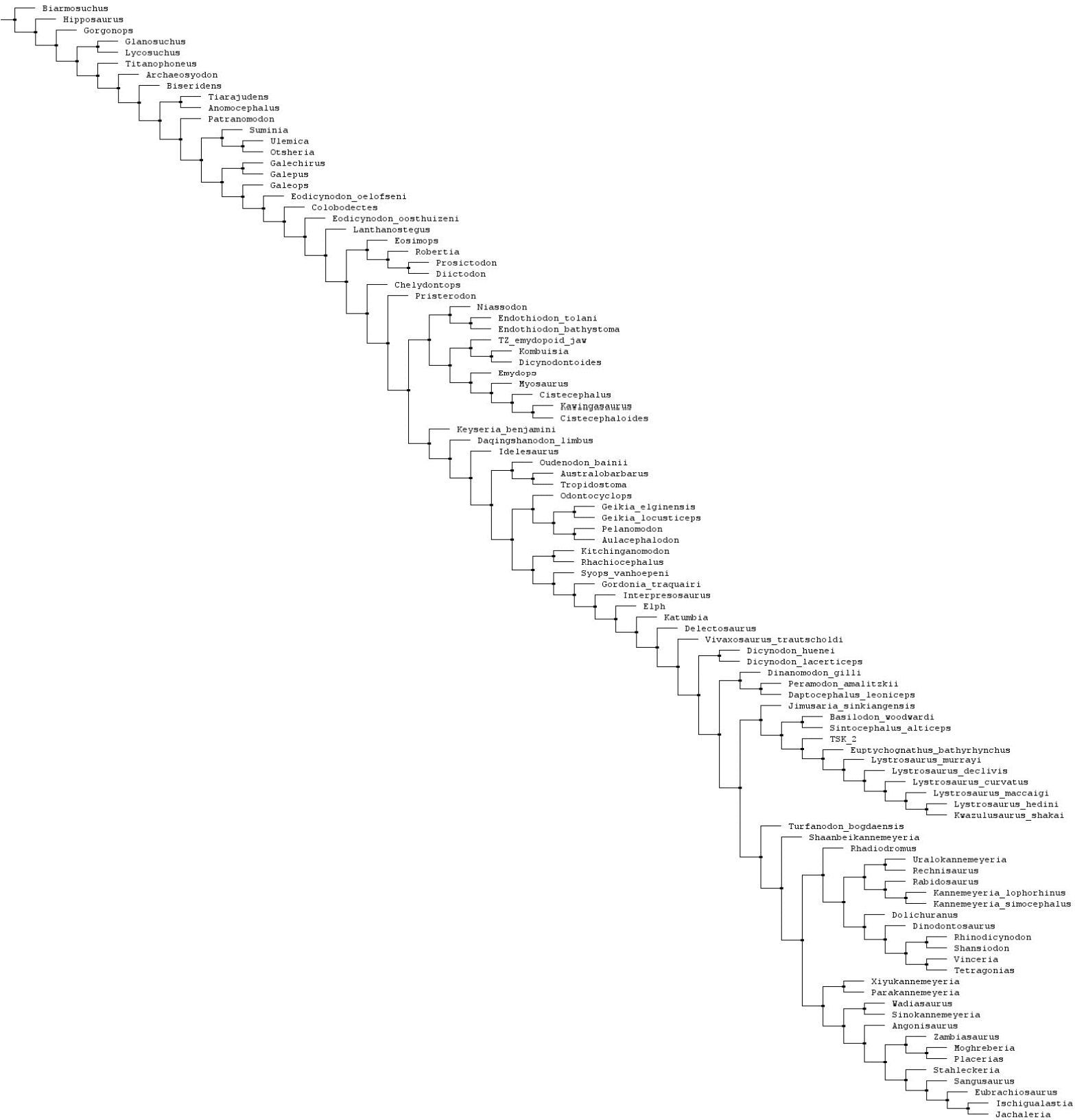


FIGURE S1. Complete cladogram from the phylogenetic analysis. Scores: 1011.816 steps, consistency