

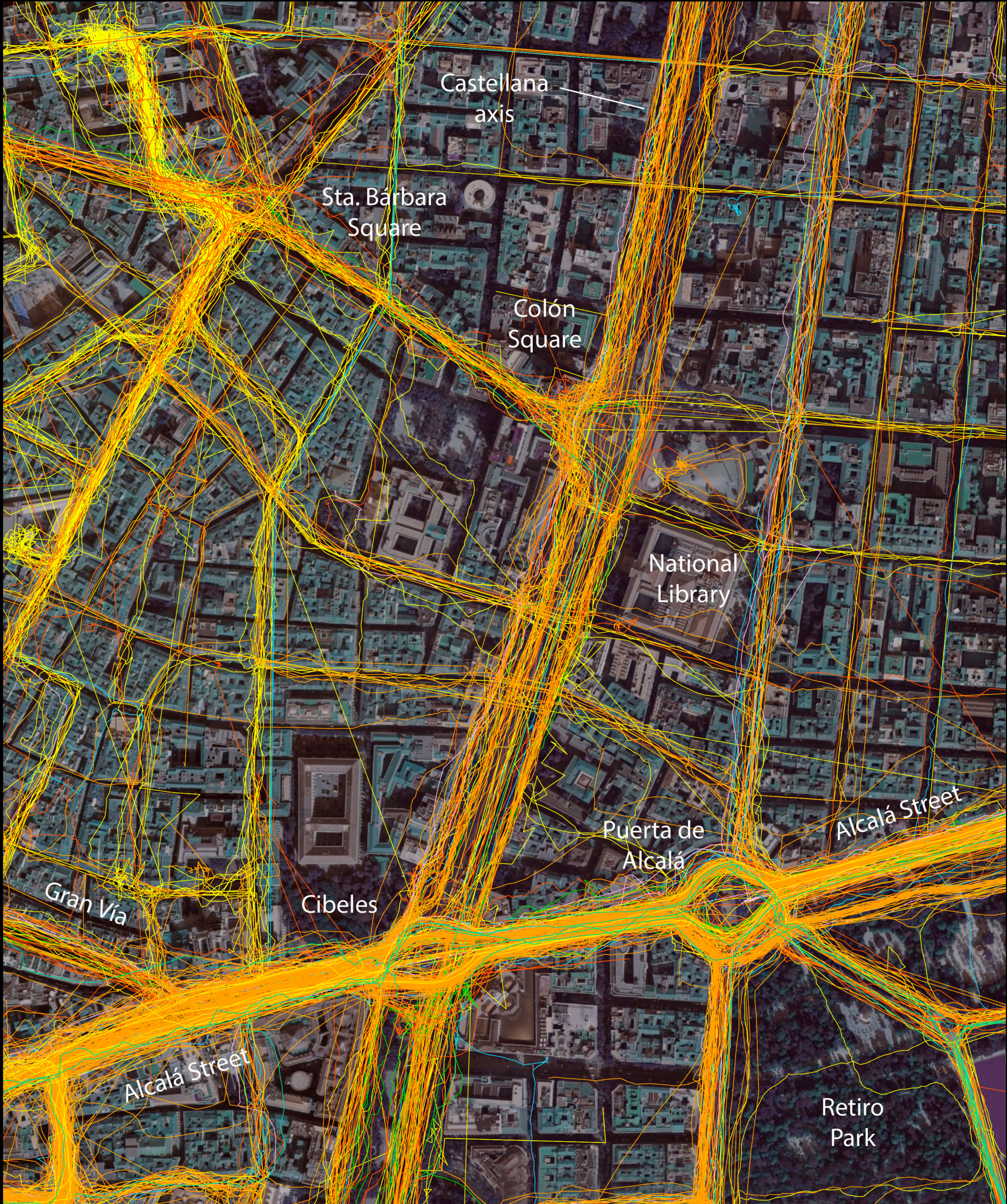
## Casual Cyclists

These maps illustrate the cycle routes collected through the initiative Huella Ciclista de Madrid (Madrid Cycle Track). The initiative was launched through an online platform (website available at [www.huellaciclistademadrid.es](http://www.huellaciclistademadrid.es)). In this platform, different online maps represented the evolution the collective track over time. The Casual Cyclist map is represented here as embedded in the existing online platform. The pop up window represents the information obtained for each track.

The total number of cycle routes gathered was 6,022 resulting in 48,122 km of GPS tracks uploaded by 328 volunteers participating from June 2013 to September 2014, taking into account both the casual cyclists and bike messengers. Casual cyclists' routes were mainly collected from June 2013 to March 2014.

Table 1. Route statistics according to the purpose of the journey | (\* Routes with known purpose)

Purpose of the journey	Routes (%)	Routes* (%)	Speed Average (Km/h)	Time Average (minutes)	Distance Average (metres)
Commuting	31.11	42.19	15.82	24.52	5,889
Leisure	17.17	23.28	15.15	23.94	5,705
Sport	5.72	7.76	16.19	80.81	21,002
Shopping	6.30	8.55	14.66	22.29	5,648
Management / other	5.51	7.47	15.18	17.07	4,231
Study	7.93	10.76	14.82	21.12	5,201
Unknown	26.26	-	14.28	28.30	6,638
Total / Average	100.00	100.00	15.42	31.64	7,947



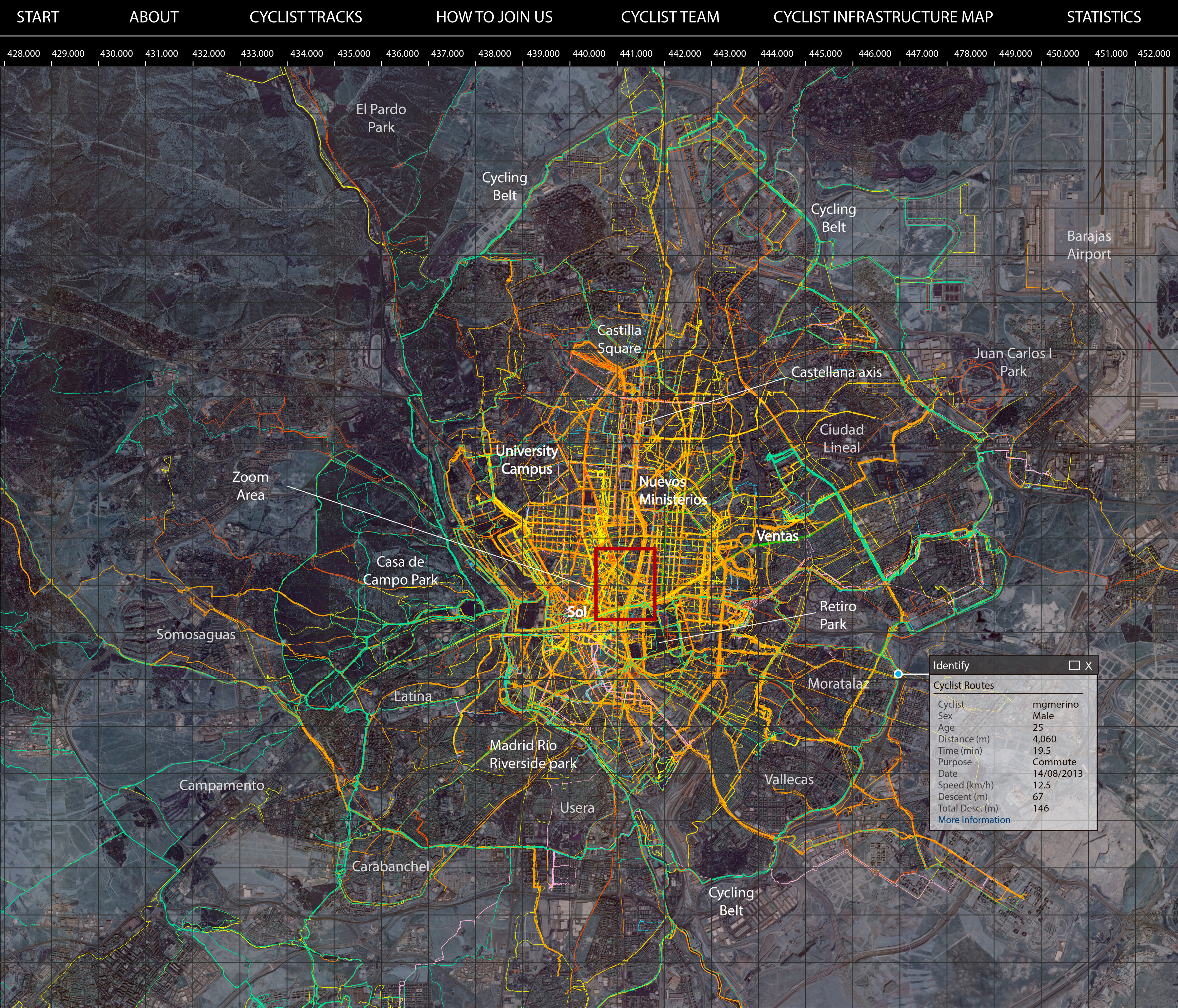
**Coordinate System & Projection**  
WGS 1984 Complex UTM Zone 30 N  
Projection: Transverse Mercator Complex  
False Easting: 500000.0 | False Northing: 0.0  
Central Meridian: -3.0  
Latitude of origin: 0.0 | Linear Unit: Meter (1.0)

**Scale**  
1:5,000  
0 100 200 500 m

**North**  


MadridCycleTrack

Do you cycle? Leave your track




**Purpose of the journey**  
Commutate / work Others  
Sport Studies  
Shopping Leisure

**Coordinate System & Projection**  
WGS 1984 Complex UTM Zone 30 N  
Projection: Transverse Mercator Complex  
False Easting: 500000.0 | False Northing: 0.0  
Central Meridian: -3.0  
Latitude of origin: 0.0 | Linear Unit: Meter (1.0)

**Data Sources**  
+ Base Map: Ortophoto Madrid | Source: Esri - Goeye  
Real colours are filtered  
+ Cycle routes: Data collected by the Huella ciclista de Madrid Initiative ([www.huellaciclistademadrid.es](http://www.huellaciclistademadrid.es))

**Scale**  
1:50,000  
0 1 2 5 km

**North**  


## Bike messengers

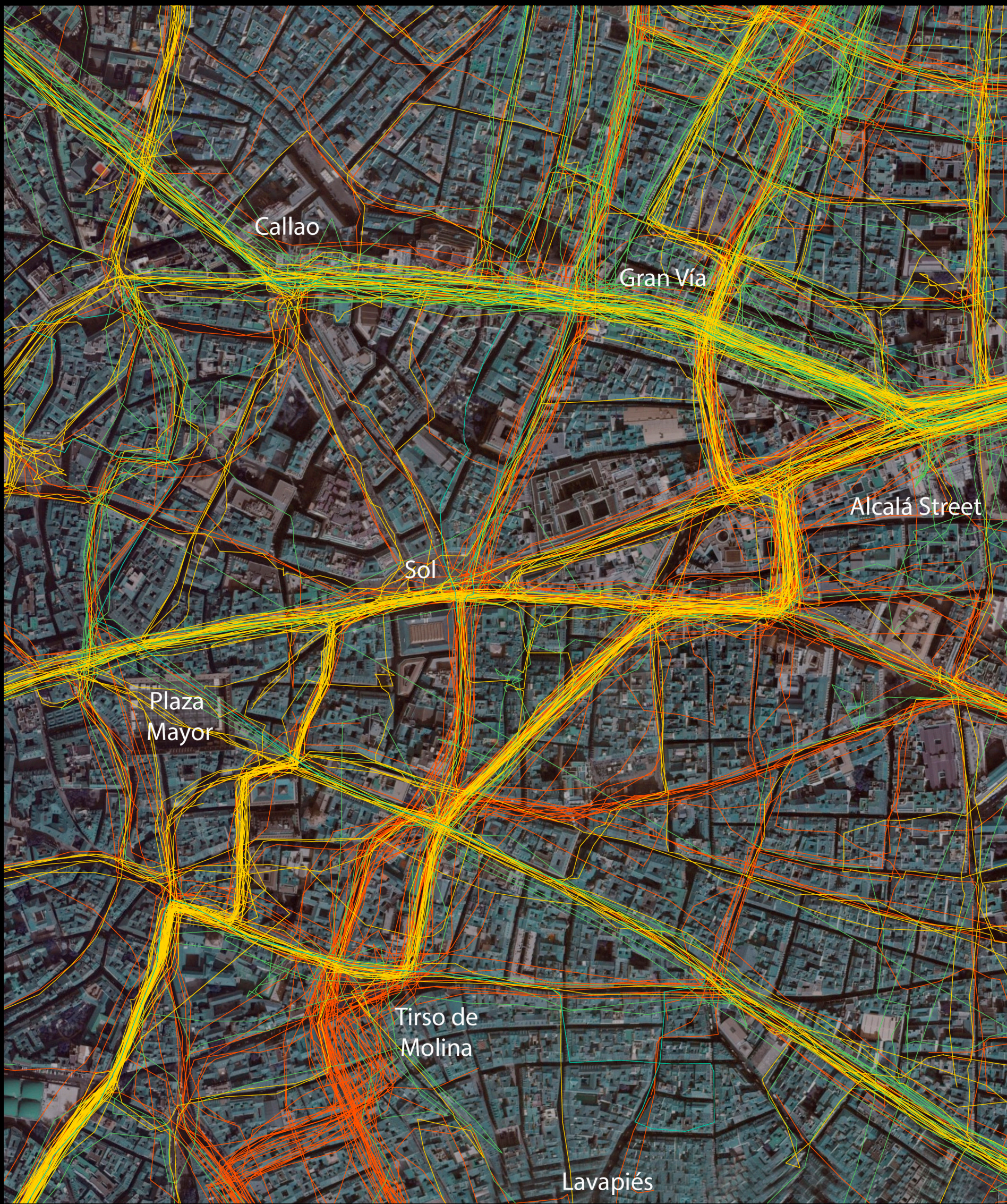
The bike messengers' routes were collected from November 2013 to September 2014. A total number of 2,052 routes were finally gathered from four different companies, providing 10,777 cycled kilometres.

Table 2. Route statistics according to the type of bike of the messengers

Type of bike	Routes (uds.)	Speed Av. (km/h)	Distance Av. (m)
Normal Bike	1,553	19.6	5,245
Bullit bike (elect.)	131	19.7	3,061
Cargo trike (elect.)	37	11.4	2,494

Table 3. Routes by company

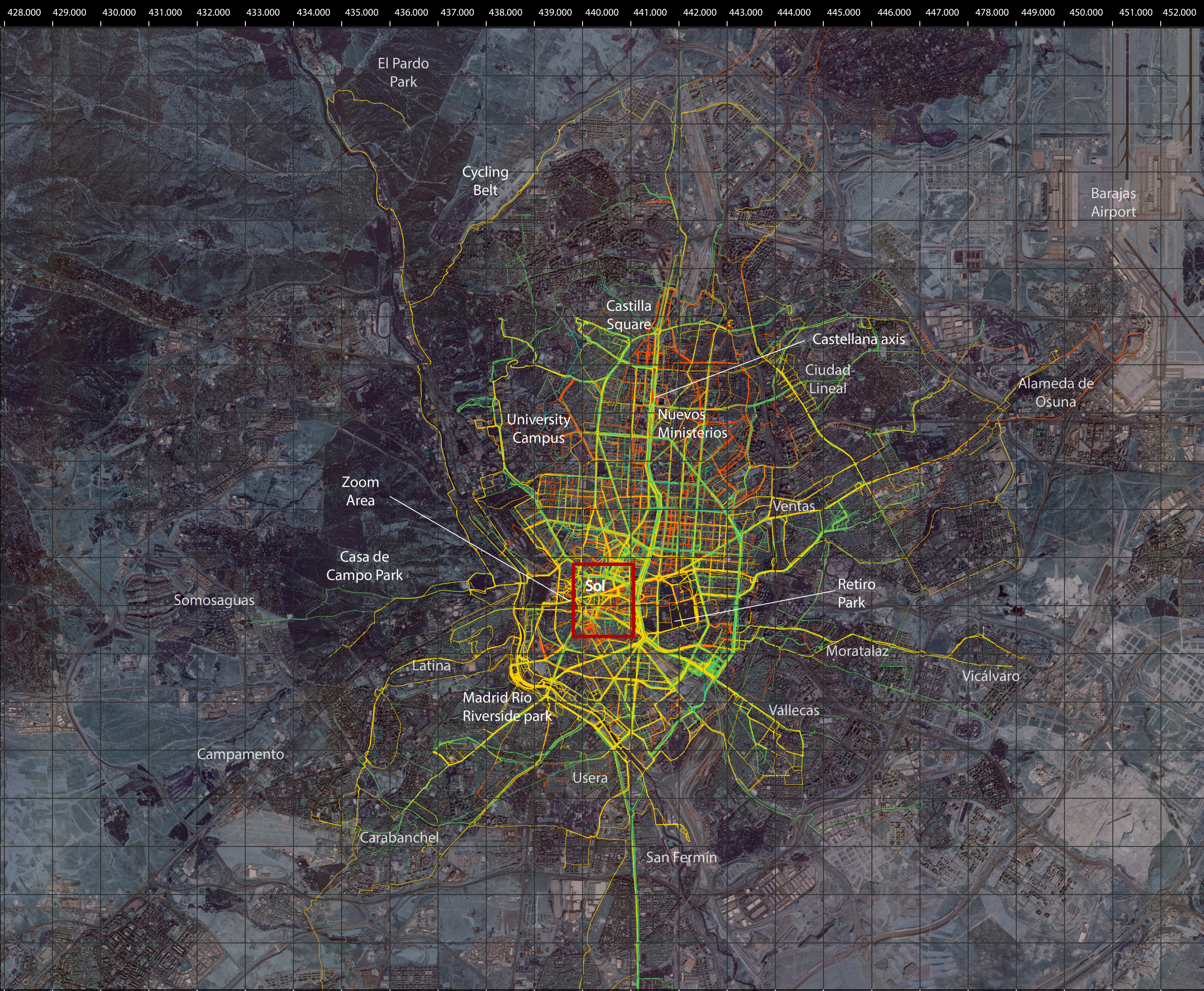
Company	Routes (uds.)
Bike Post	400
Trebol	852
Emakers	389
Mensos	411



**Coordinate System & Projection**  
WGS 1984 Complex UTM Zone 30 N  
Projection: Transverse Mercator Complex  
False Easting: 500000.0 | False Northing: 0.0  
Central Meridian: -3.0  
Latitude of origin: 0.0 | Linear Unit: Meter (1.0)

**Scale**  
1:5,000  
0 100 200 500 m

**North**  

**Bike messengers companies**  
Bike Post ecomensajeros  
Trebol ecomensajeros  
Emakers  
Mensos

**Coordinate System & Projection**  
WGS 1984 Complex UTM Zone 30 N  
Projection: Transverse Mercator Complex  
False Easting: 500000.0 | False Northing: 0.0  
Central Meridian: -3.0  
Latitude of origin: 0.0 | Linear Unit: Meter (1.0)

**Data Sources**  
+ Base Map: Ortophoto Madrid | Source: Esri - Goeye  
Real colours are filtered  
+ Cycle routes: Data collected by the Huella ciclista de Madrid Initiative ([www.huellaciclistademadrid.es](http://www.huellaciclistademadrid.es))

**Scale**  
1:50,000  
0 1 2 5 km

**North**  
