

# Evolution and role of the follicular epidermal gland system in non-ophidian squamates

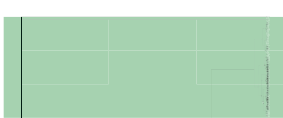
Christopher Mayerl<sup>1,\*</sup>, Simon Baeckens<sup>2,\*</sup>, Raoul Van Damme<sup>2</sup>

1 - Clemson University, 132 Long Hall, Department of Biological Sciences, Clemson SC,  
29634, USA

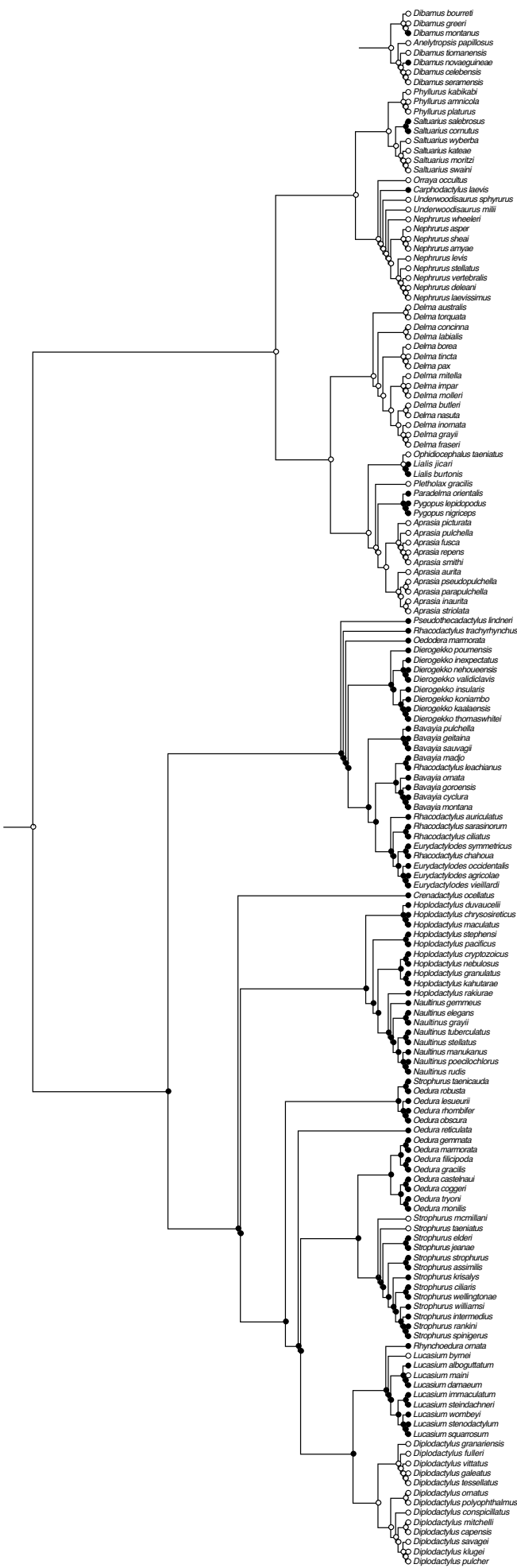
2 - University of Antwerp, Laboratory of Functional Morphology, Universiteitsplein 1 - C,  
2610 Wilrijk, Belgium

\* These authors contributed equally to the work

**Supplementary Figure S1**



A

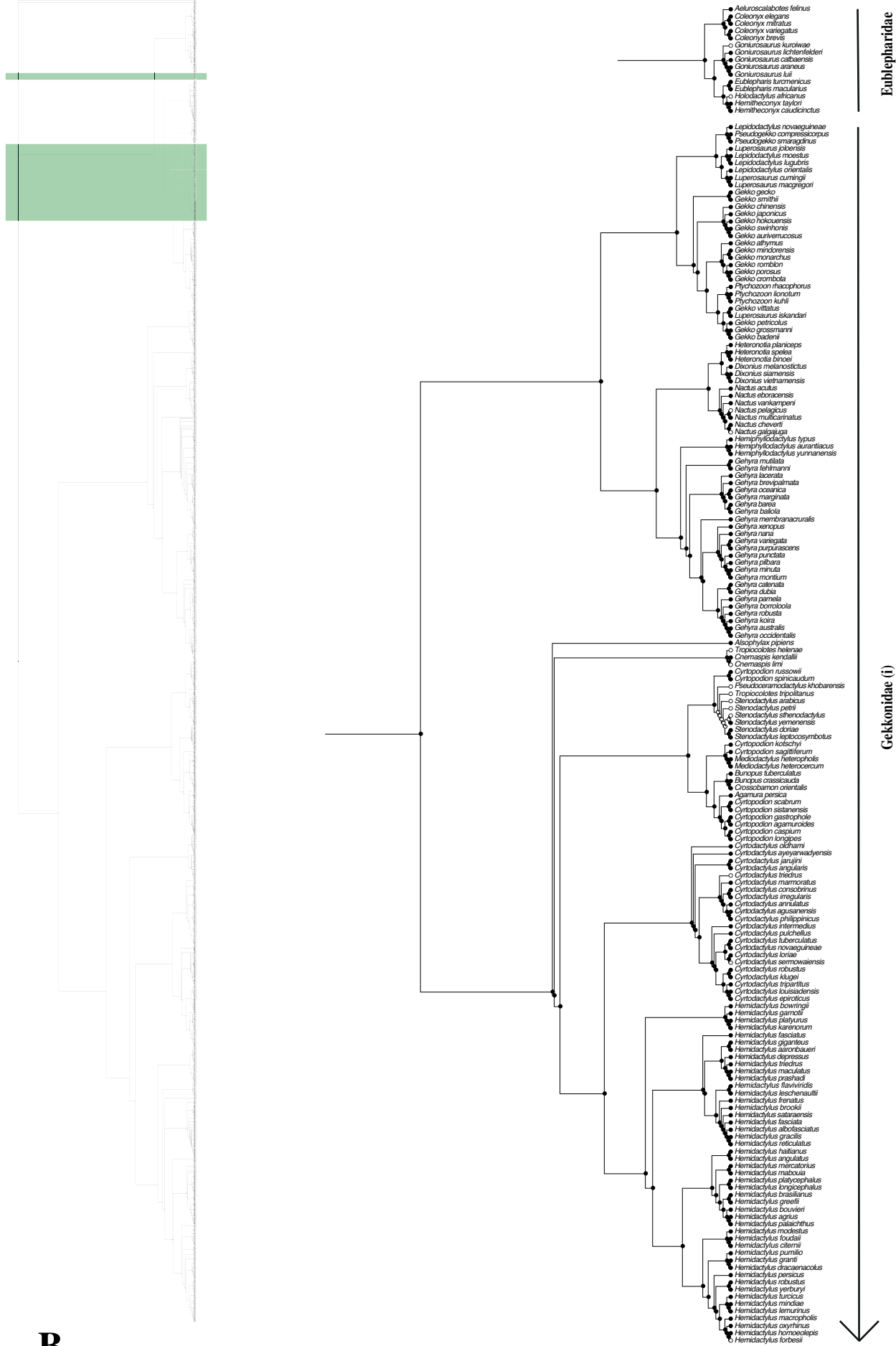


Dibamidae

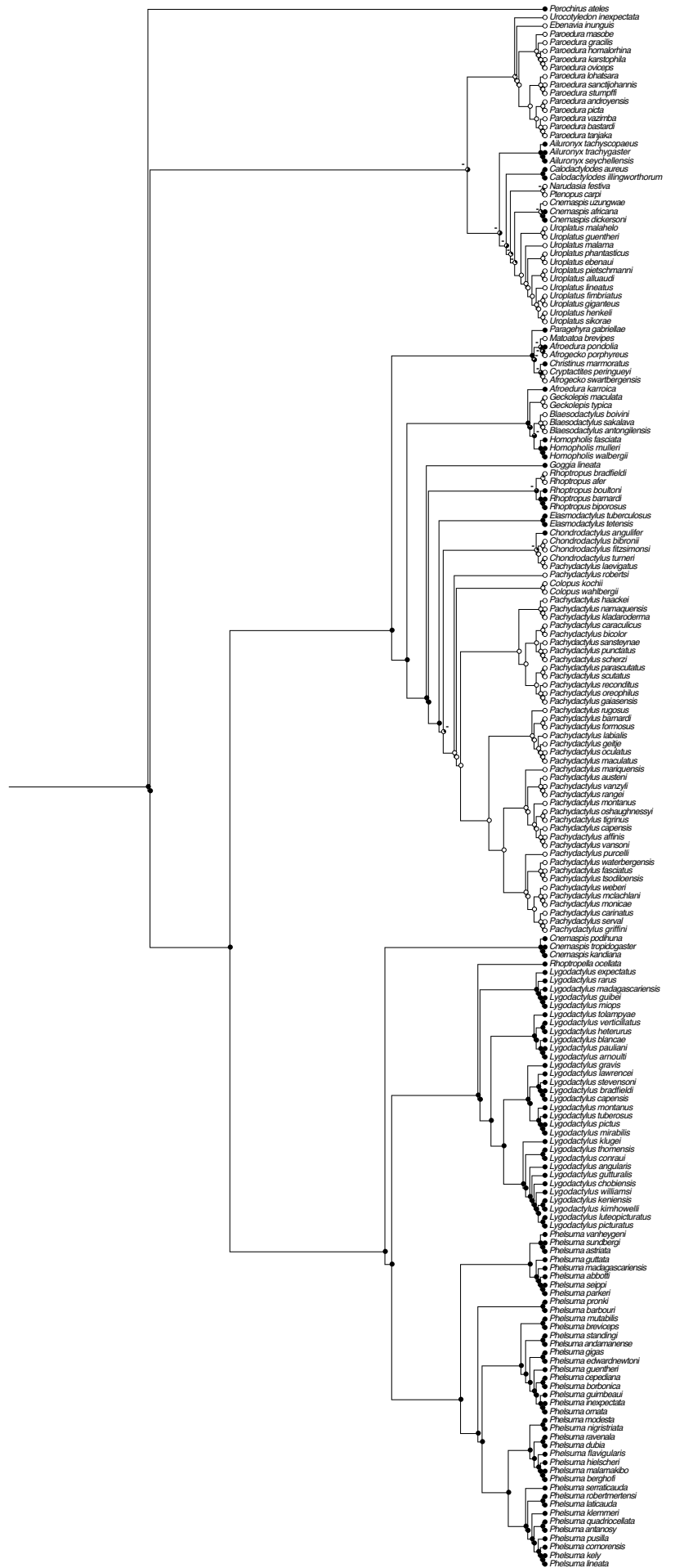
Carphodactylidae

Pygopodidae

Diplodactylidae

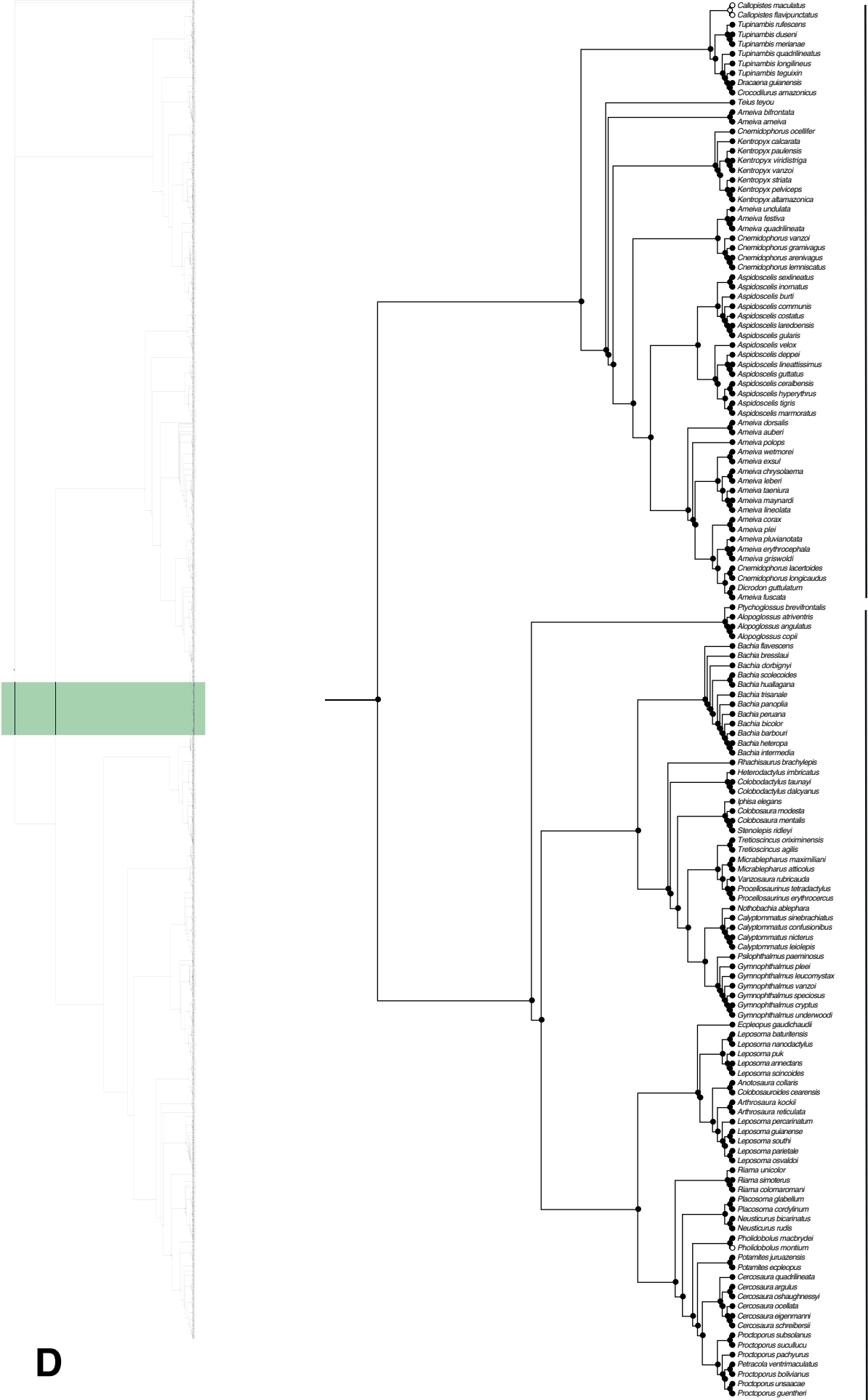


B

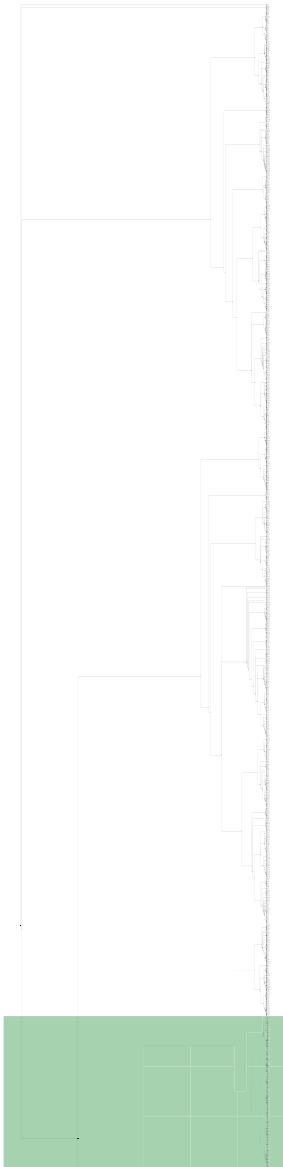


Gekkonidae (ii)

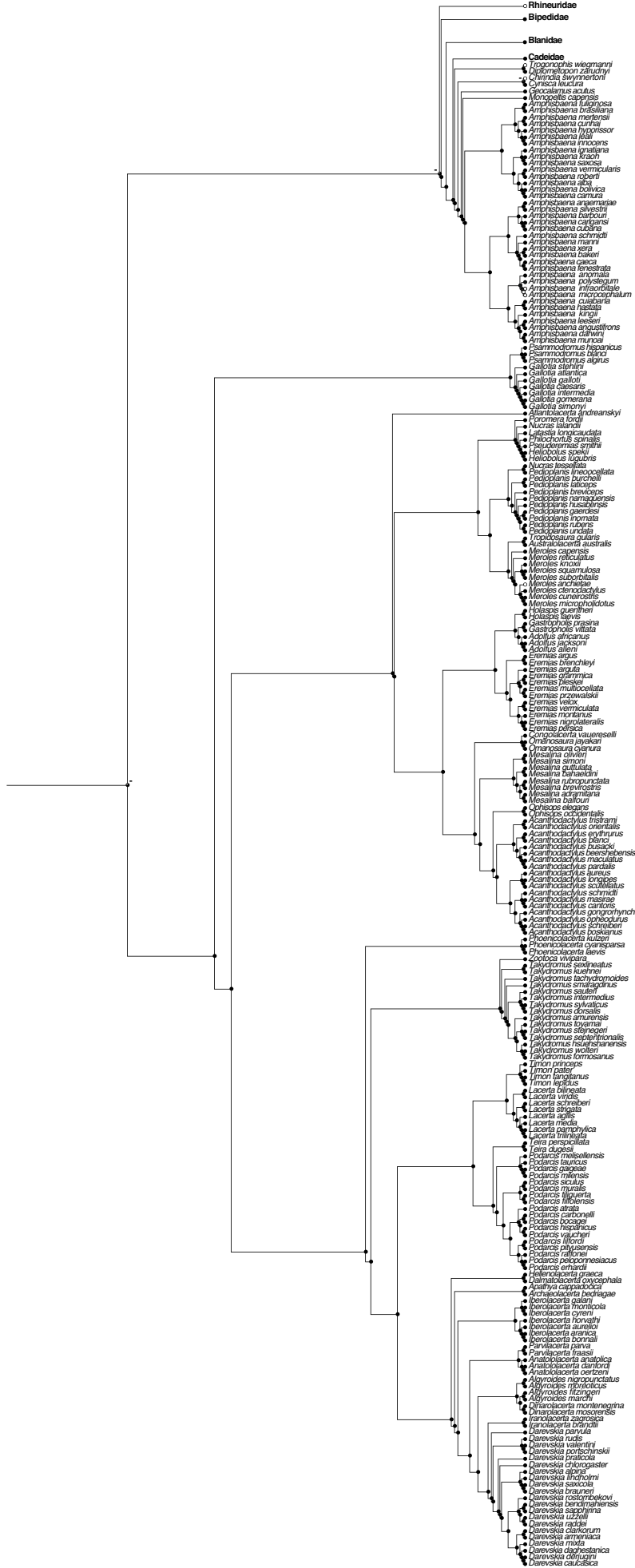
C



D



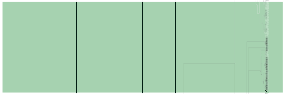
E



Trogonophiidae

Amphisbaenidae

Lacertidae



F

