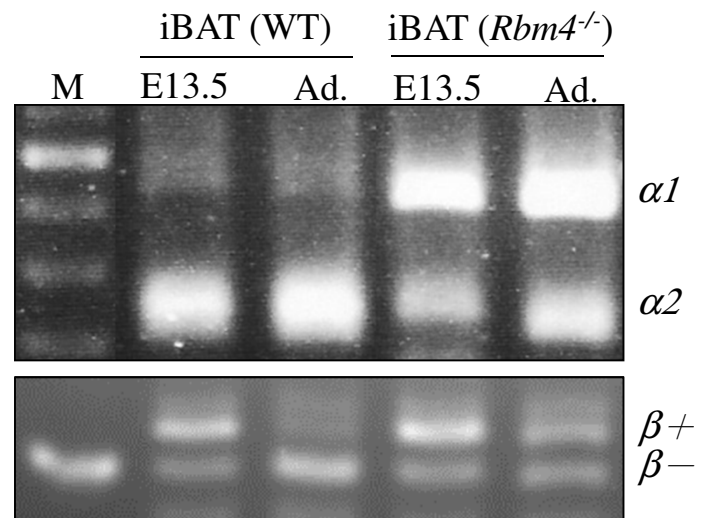


Fig. S1



**Figure S1.** Expression profile of *MEF2C* transcripts in mature brown adipocytes. (A)

Total RNA isolated from the wild-type and *RBM4*<sup>-/-</sup> iBAT was subjected to RT-PCR using specific primer against the flanking region of *MEF2C*  $\alpha$ 1/ $\alpha$ 2 exons and  $\beta$  region.