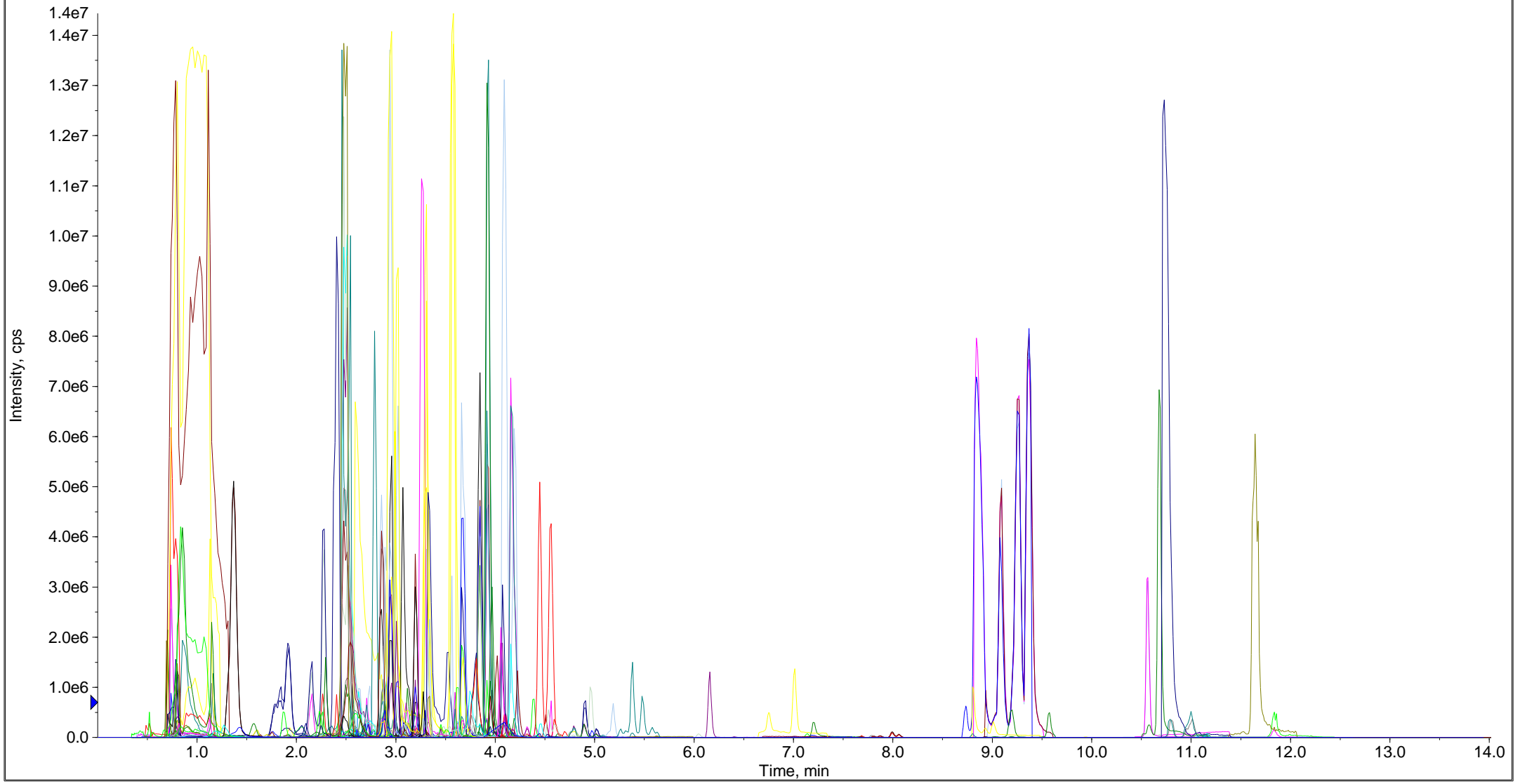


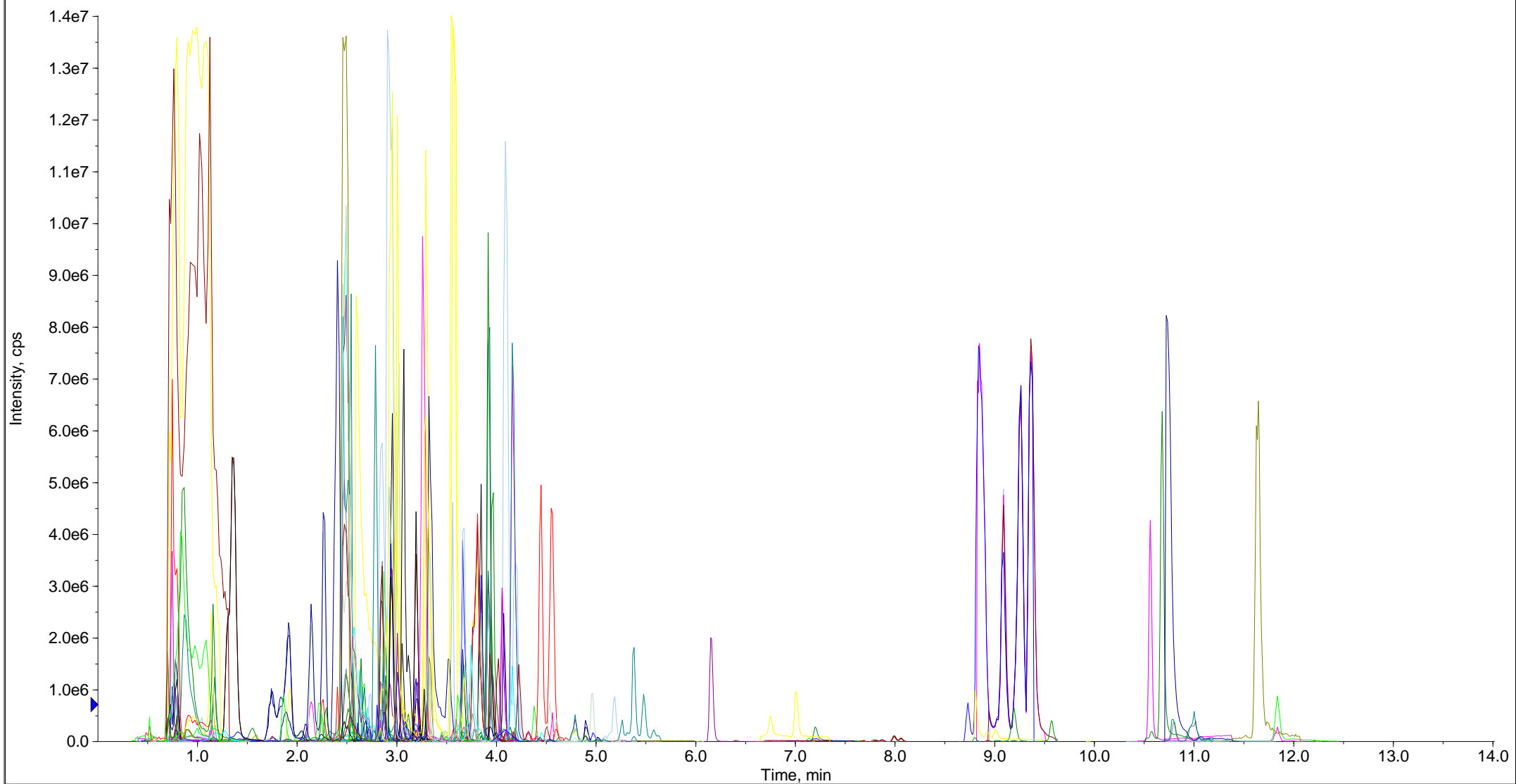
■ XIC of -MRM (734 pairs): 515.120/353.088 amu Expected RT: 4.2 ID: Li512115 from Sample 28 (A19057583a\_N) of MWXS-19-1774-02\_9\_JS45...

Max. 3.1e5 cps.



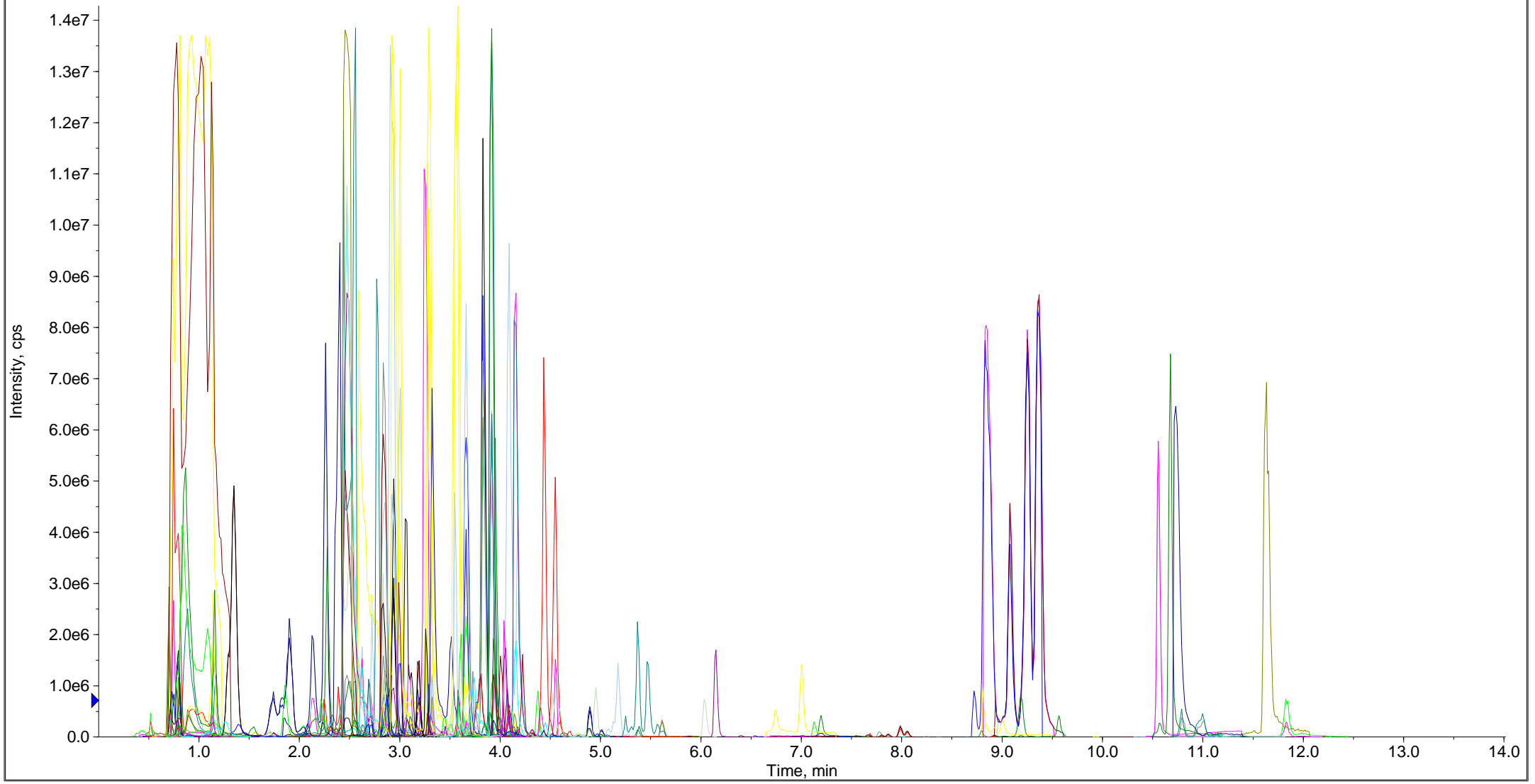
■ XIC of -MRM (734 pairs): 515.120/353.088 amu Expected RT: 4.2 ID: Li512115 from Sample 27 (A19057582a\_N) of MWXS-19-1774-02\_9\_JS45...

Max. 2.3e5 cps.



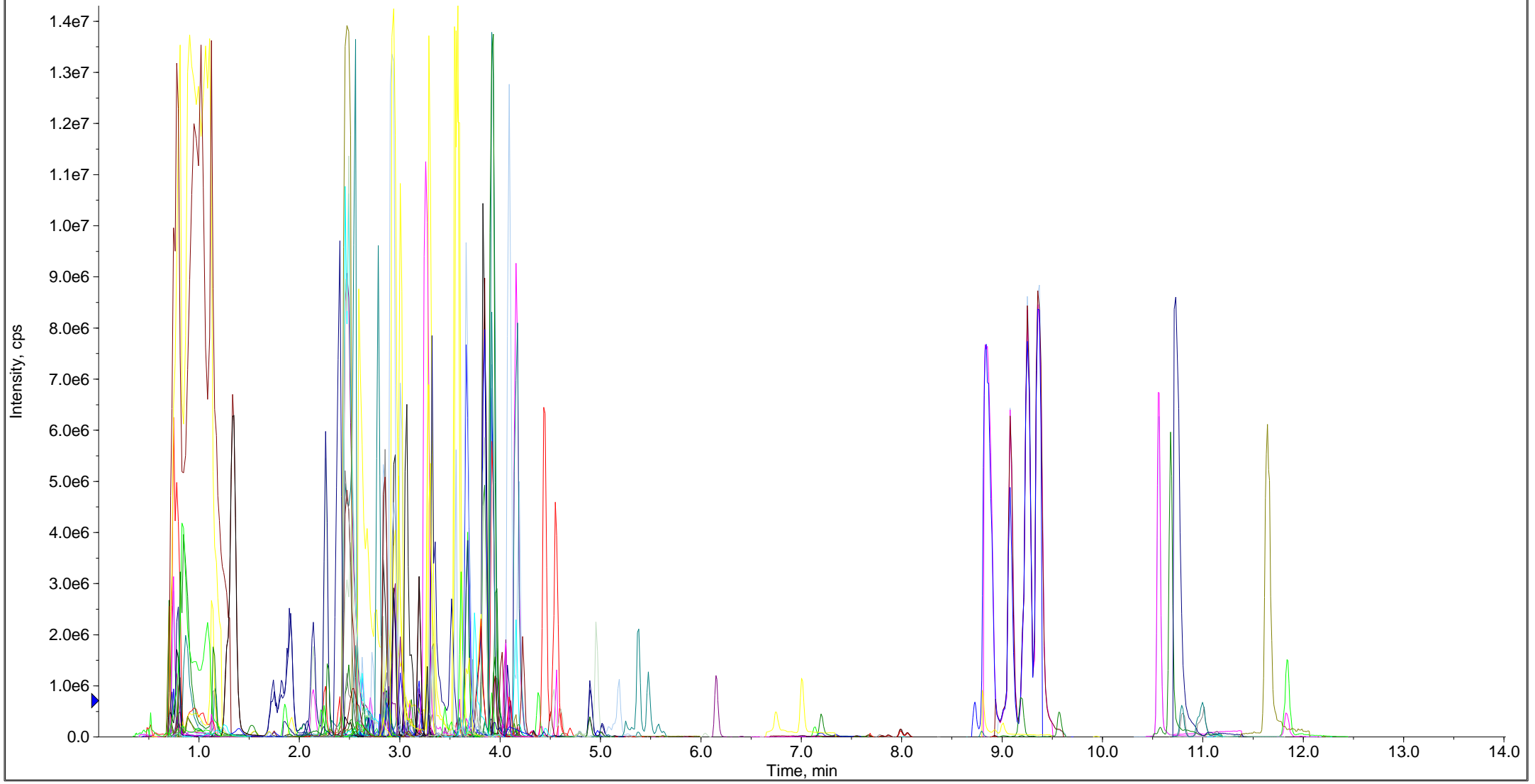
■ XIC of -MRM (734 pairs): 515.120/353.088 amu Expected RT: 4.2 ID: Li512115 from Sample 26 (A19057581a\_N) of MWXS-19-1774-02\_9\_JS45...

Max. 1.2e5 cps.



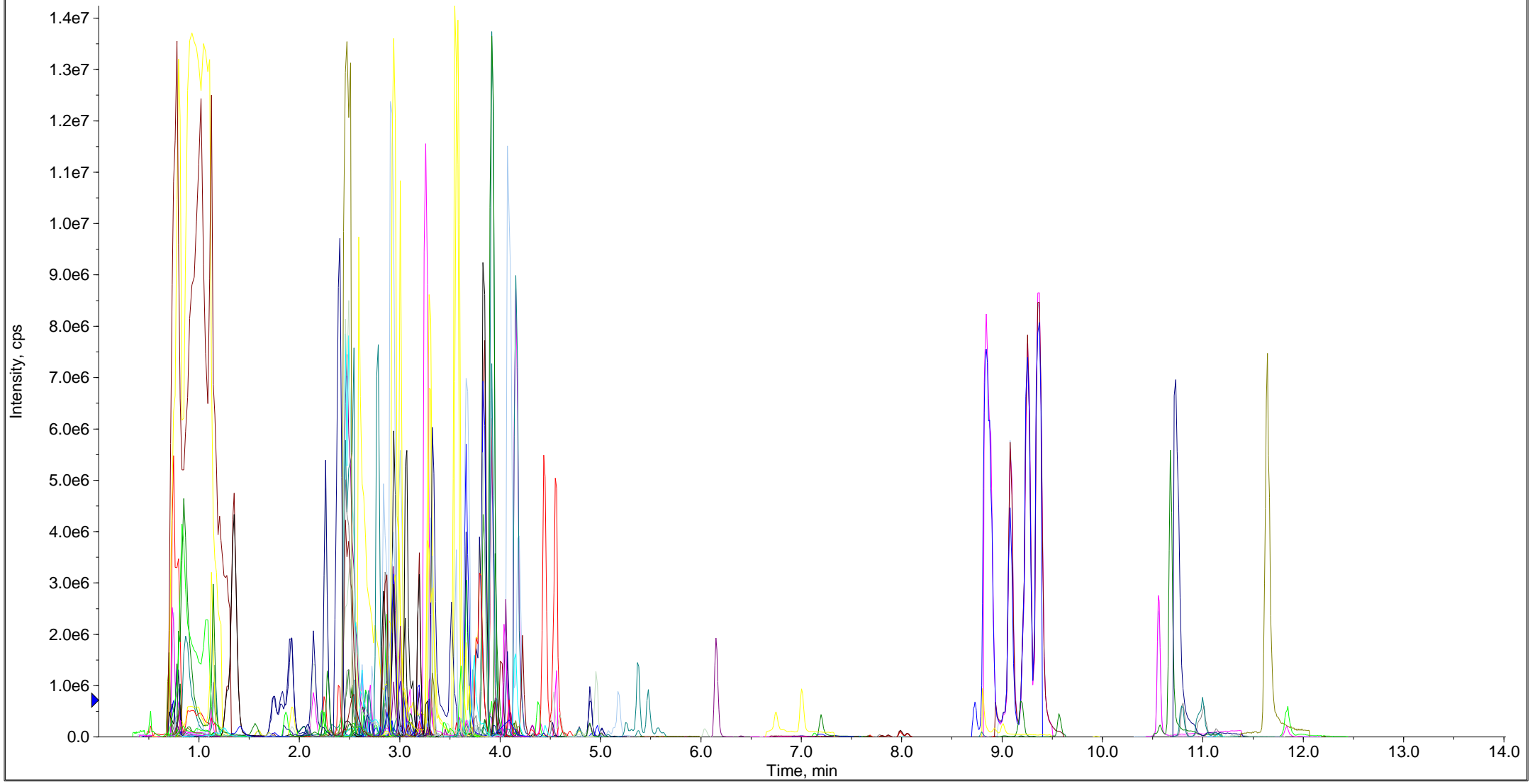
■ XIC of -MRM (734 pairs): 515.120/353.088 amu Expected RT: 4.2 ID: Li512115 from Sample 25 (A19054975a\_N) of MWXS-19-1774-02\_9\_JS45...

Max. 2.0e5 cps.



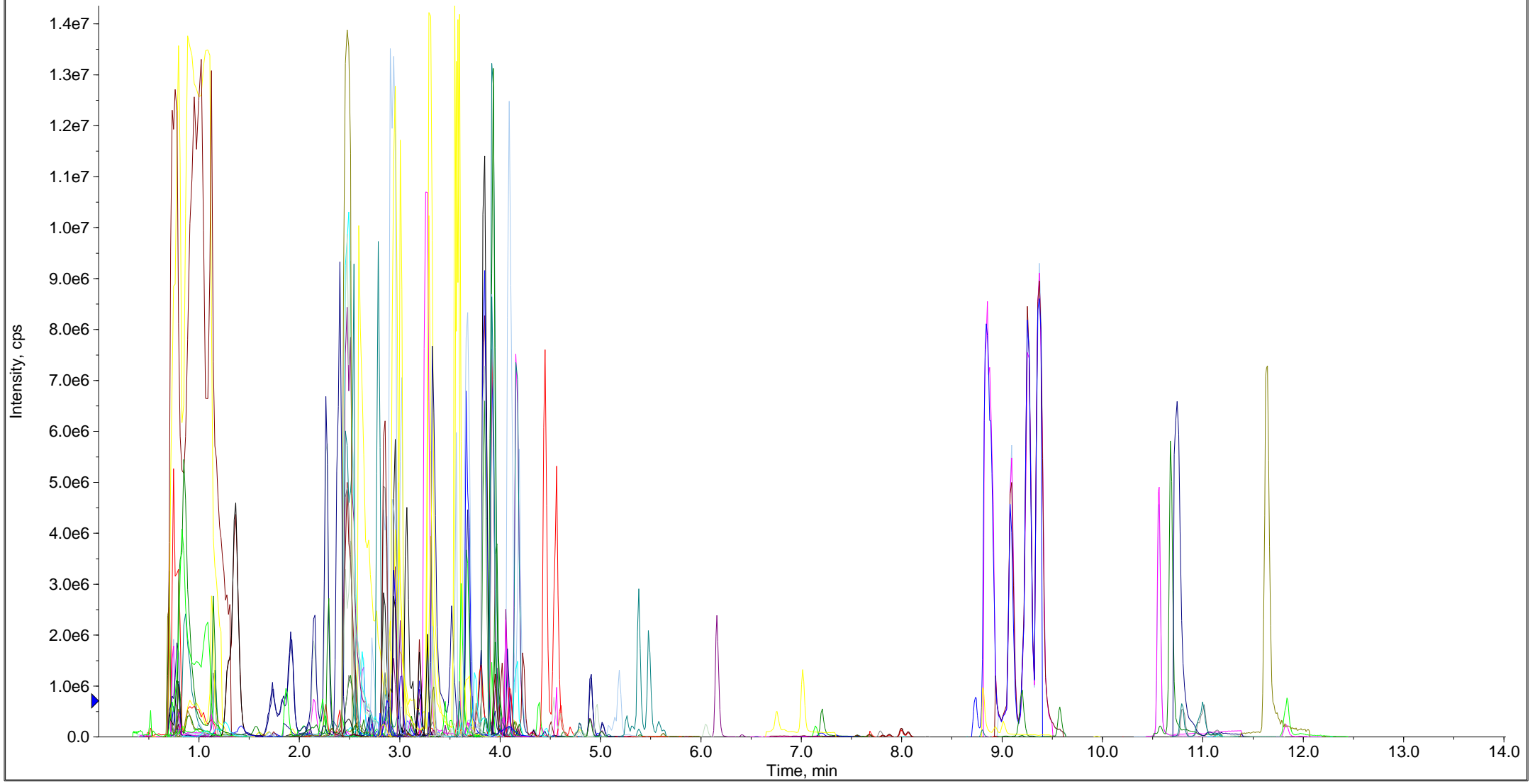
■ XIC of -MRM (734 pairs): 515.120/353.088 amu Expected RT: 4.2 ID: Li512115 from Sample 22 (A19054974a\_N) of MWXS-19-1774-02\_9\_JS45...

Max. 3.3e5 cps.



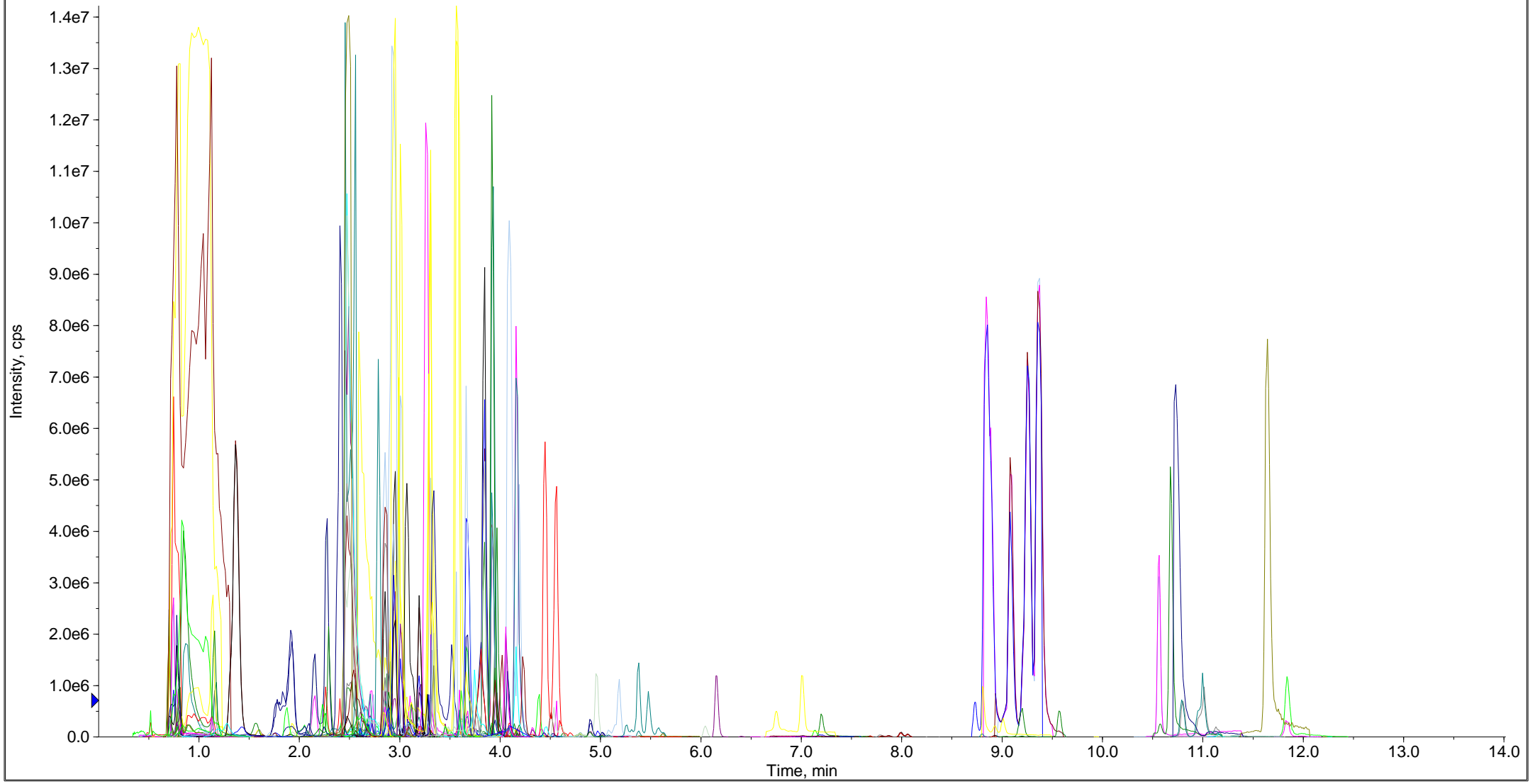
■ XIC of -MRM (734 pairs): 515.120/353.088 amu Expected RT: 4.2 ID: Li512115 from Sample 21 (A19054973a\_N) of MWXS-19-1774-02\_9\_JS45...

Max. 2.1e5 cps.



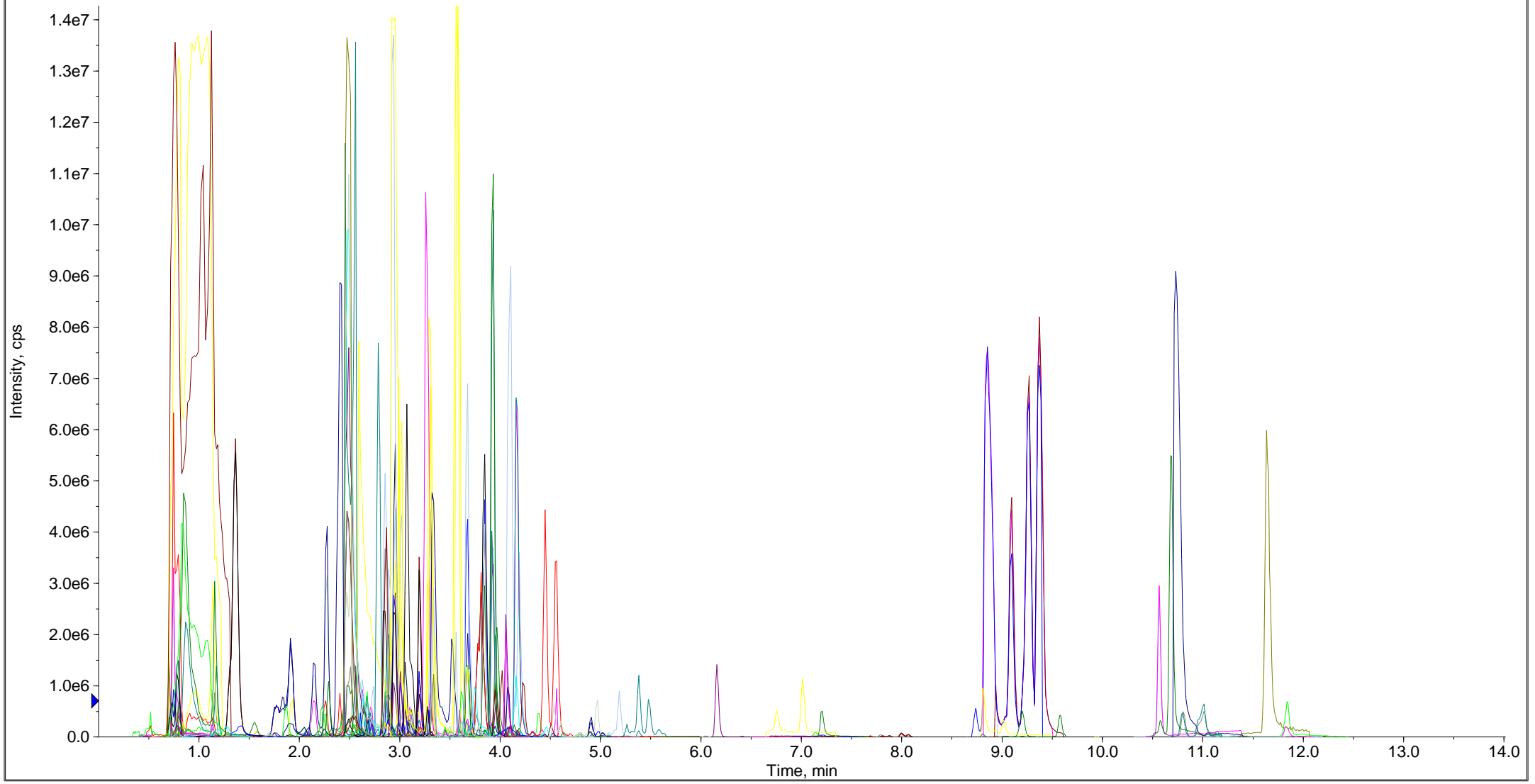
■ XIC of -MRM (734 pairs): 515.120/353.088 amu Expected RT: 4.2 ID: Li512115 from Sample 20 (A19054857a\_N) of MWXS-19-1774-02\_9\_JS45...

Max. 2.2e5 cps.



■ XIC of -MRM (734 pairs): 515.120/353.088 amu Expected RT: 4.2 ID: Li512115 from Sample 19 (A19054856a\_N) of MWXS-19-1774-02\_9\_JS45...

Max. 1.9e5 cps.





■ XIC of -MRM (734 pairs): 515.120/353.088 amu Expected RT: 4.2 ID: Li512115 from Sample 18 (A19054855a\_N) of MWXS-19-1774-02\_9\_JS45...

Max. 4.2e5 cps.

