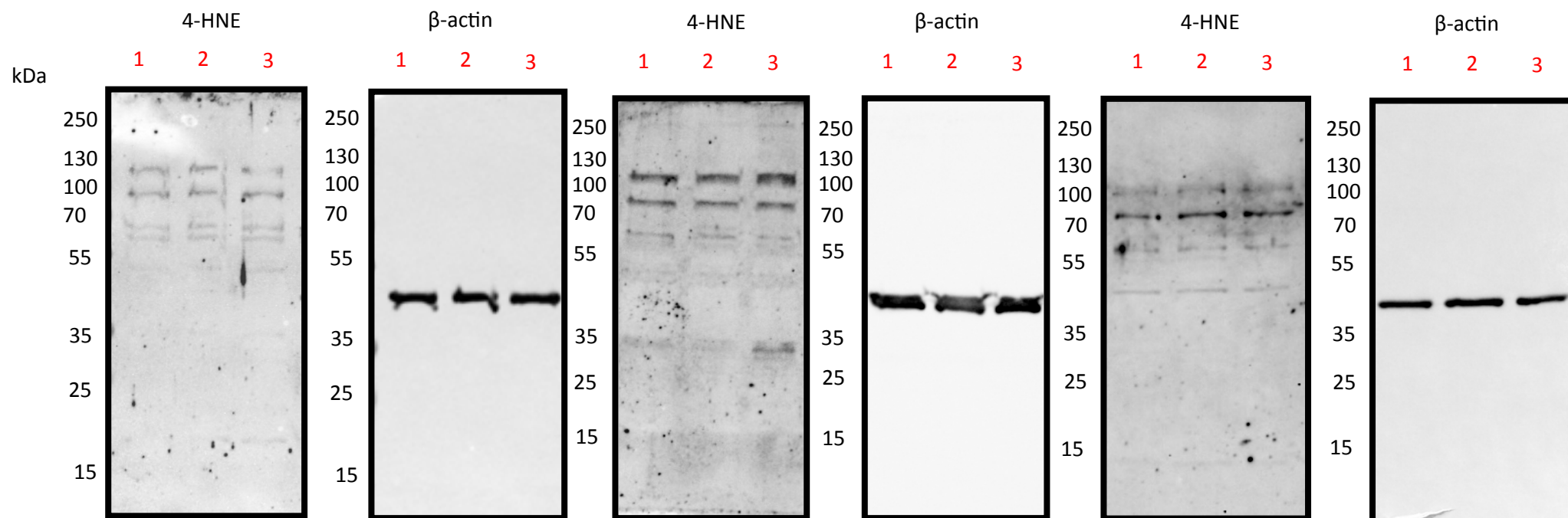


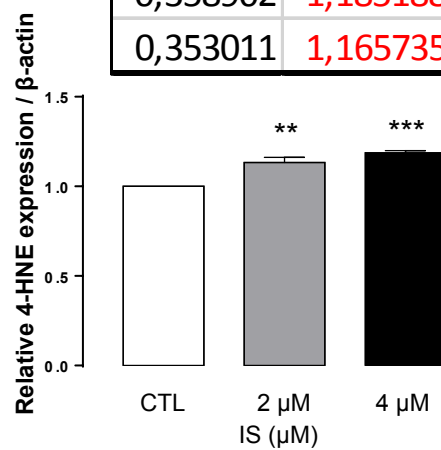
1. IS CTL
2. IS 2 μ M
3. IS 4 μ M



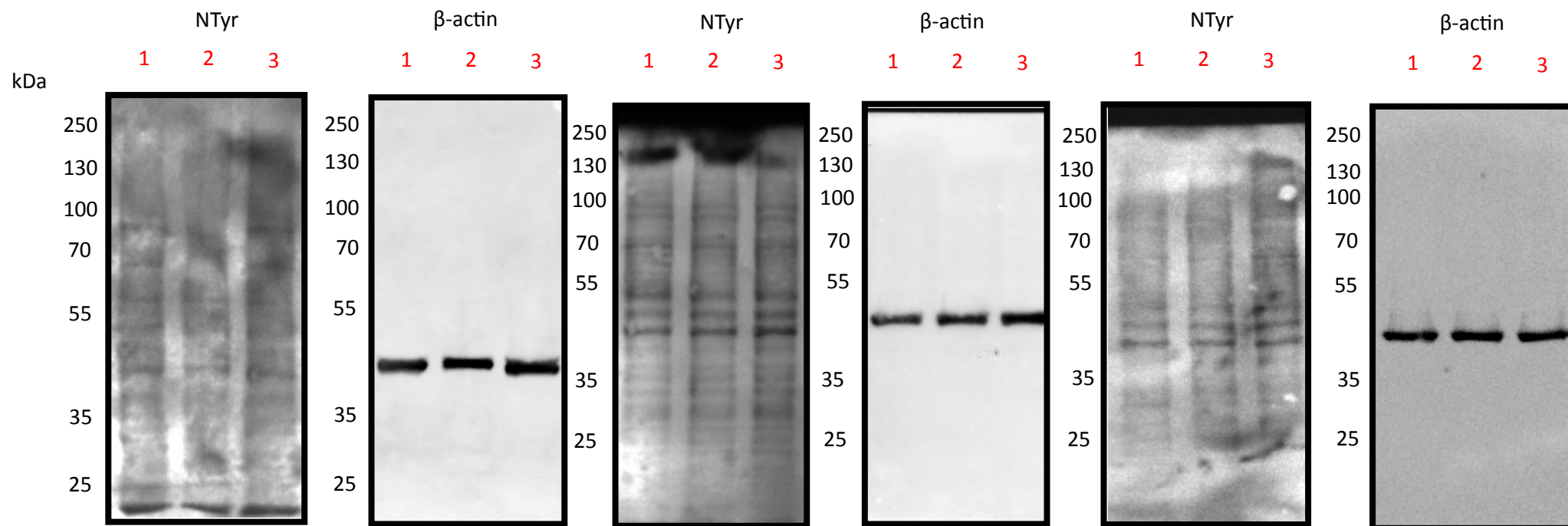
Ratio	FOLD1
0,16079	1
0,181634	1,129637
0,19228	1,195845

Ratio	FOLD2
0,302823	1
0,358902	1,185188
0,353011	1,165735

Ratio	FOLD3
0,297143	1
0,321863	1,083191
0,357557	1,203316



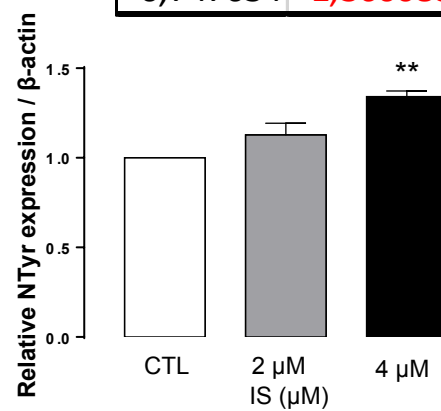
1. IS CTL
2. IS 2 μ M
3. IS 4 μ M



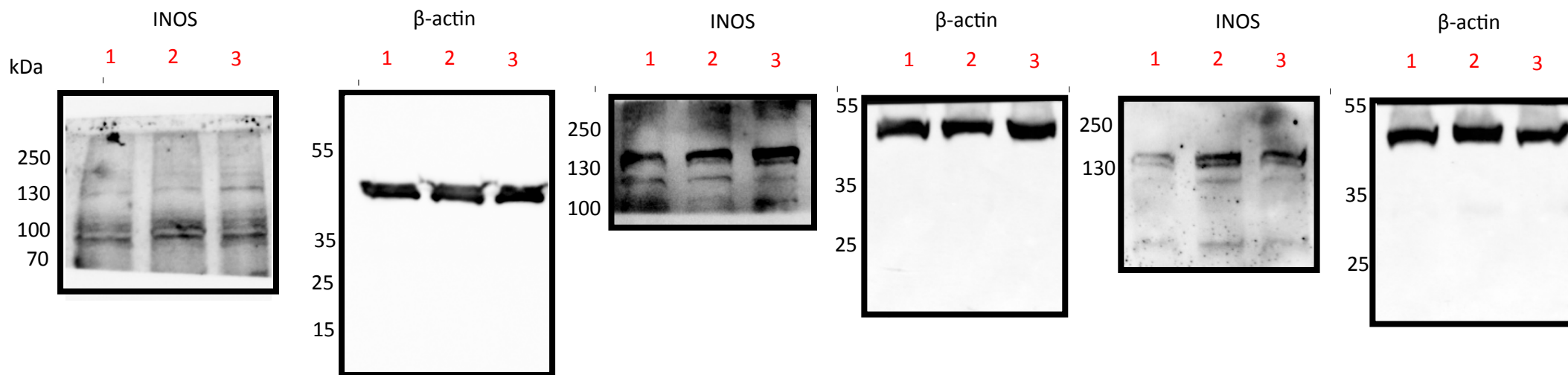
Ratio	FOLD1
0,509564	1
0,513904	1,008515
0,652834	1,281161

Ratio	FOLD2
0,549696	1
0,678364	1,234073
0,747634	1,360088

Ratio	FOLD3
0,373116	1
0,425878	1,14141
0,516645	1,384678



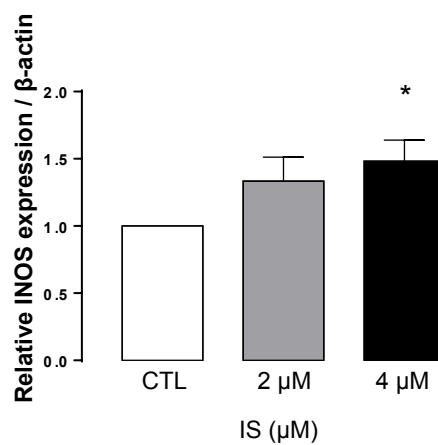
1. IS CTL
2. IS 2 μ M
3. IS 4 μ M



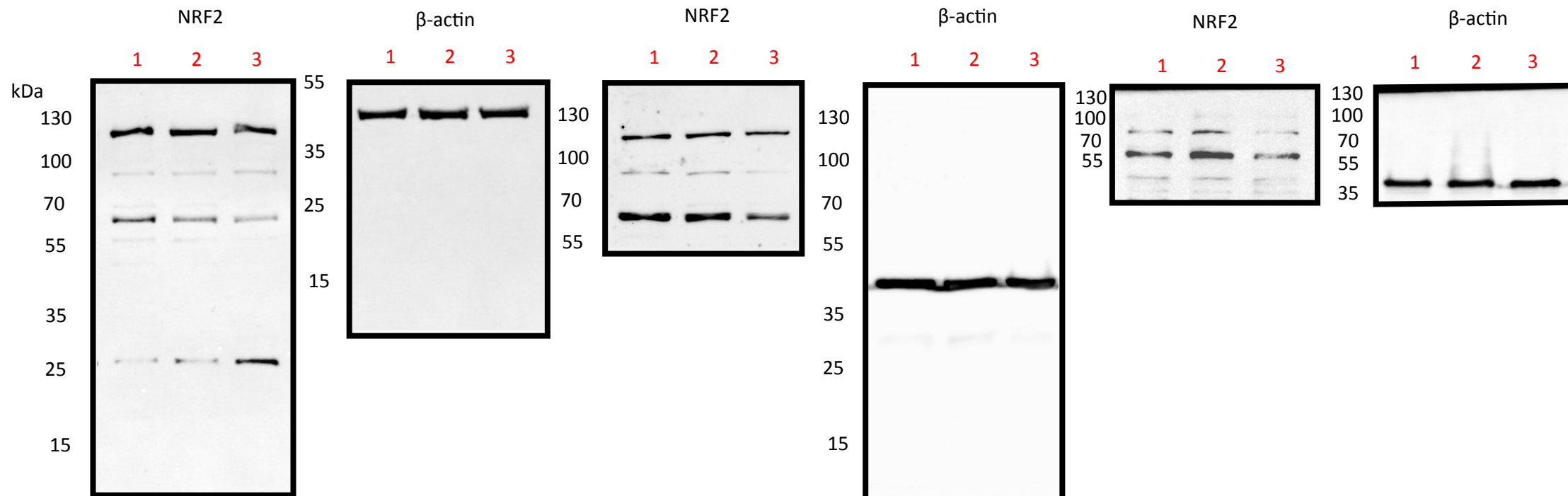
Ratio	FOLD1
0,275405	1
0,309711	1,124564
0,373111	1,354771

Ratio	FOLD2
0,864038	1
1,028351	1,190169
1,124269	1,30118

Ratio	FOLD3
0,462288	1
0,781125	1,689694
0,828917	1,793074



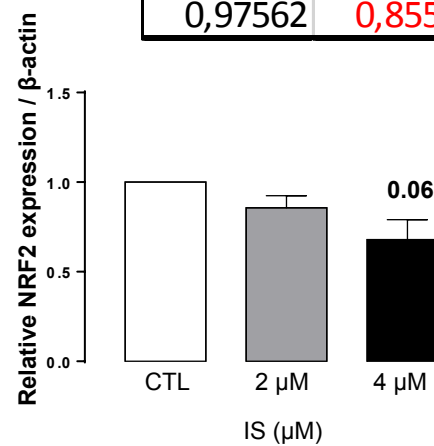
1. IS CTL
2. IS 2 μ M
3. IS 4 μ M



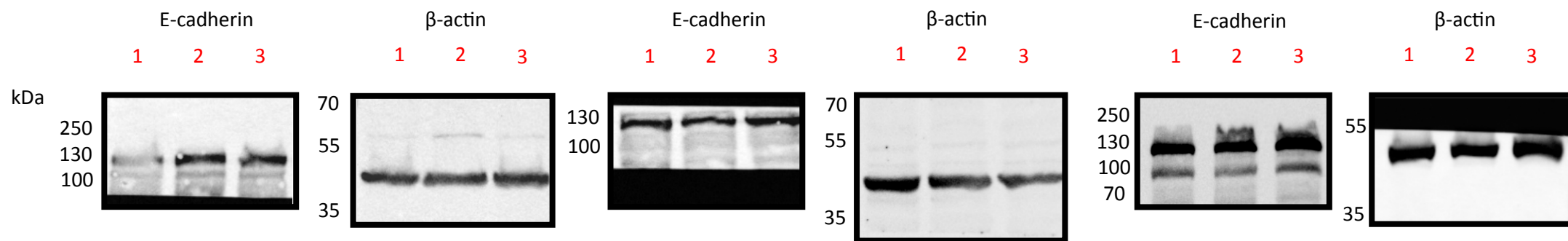
Ratio	FOLD1
0,464795	1
0,336038	0,722983
0,220149	0,473649

Ratio	FOLD2
1,139782	1
1,033949	0,907146
0,97562	0,85597

Ratio	FOLD3
0,719999	1
0,677233	0,940604
0,509257	0,707302



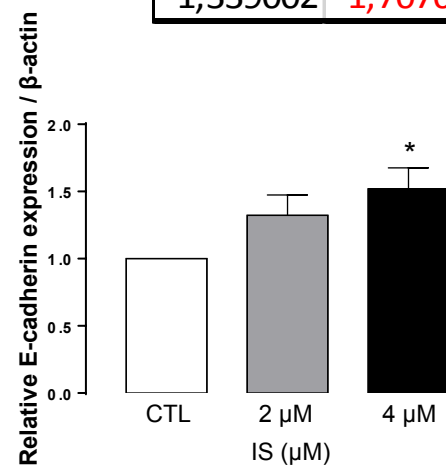
1. IS CTL
2. IS 2 μ M
3. IS 4 μ M



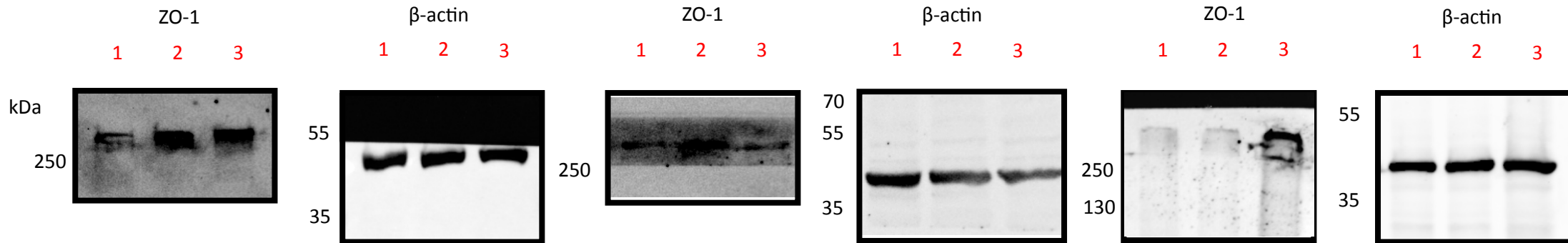
Ratio	
0,683403	1
1,109822	1,623965
1,123173	1,643501

Ratio	FOLD2
0,784392	1
0,899313	1,146509
1,339002	1,707056

Ratio	FOLD3
0,85734	1
1,02784	1,19886
1,03325	1,205179



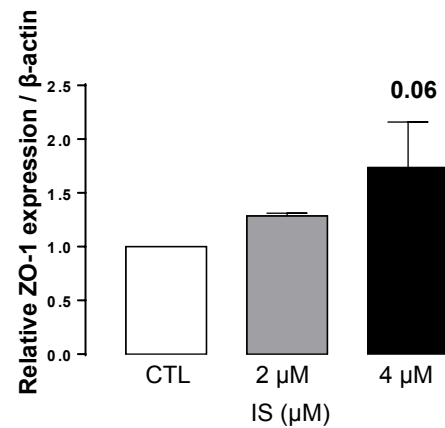
1. IS CTL
2. IS 2 μ M
3. IS 4 μ M



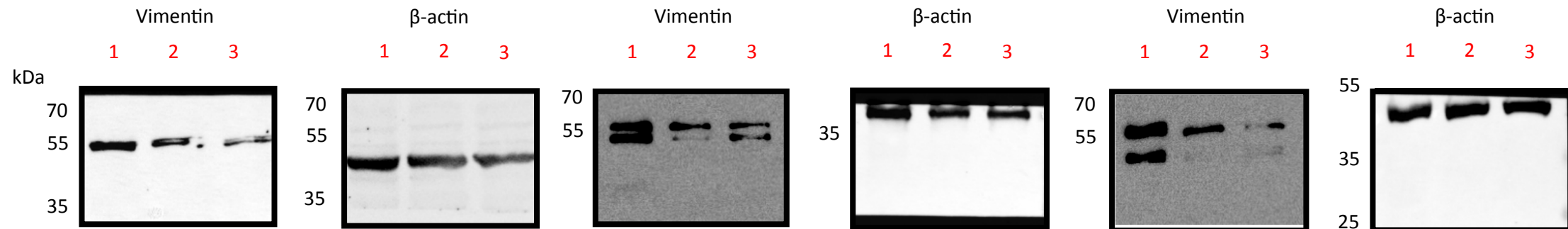
Ratio	FOLD1
0,910652	1
1,208769	1,327367
1,188925	1,305575

Ratio	FOLD2
1,293235	1
1,671337	1,292369
1,708943	1,321448

Ratio	FOLD3
0,261244	1
0,32319	1,237118
0,674834	2,583152



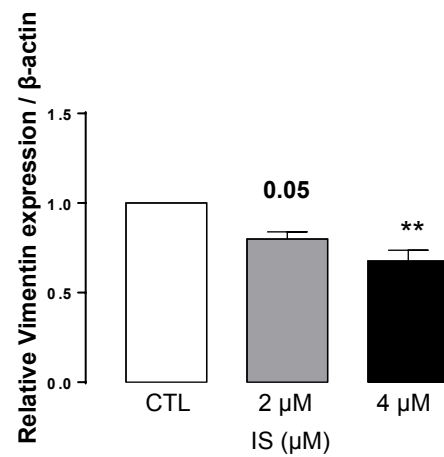
1. IS CTL
2. IS 2 μ M
3. IS 4 μ M



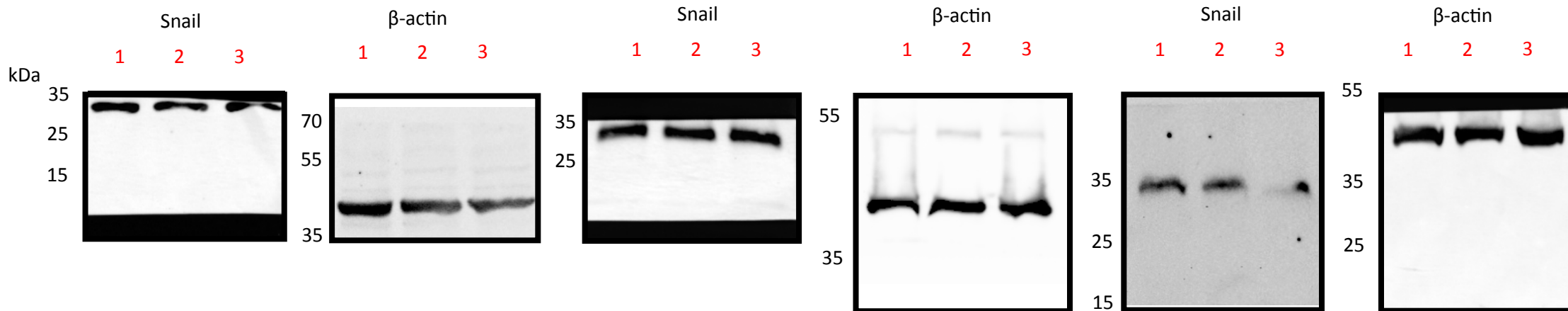
Ratio	FOLD1
1,243959	1
0,923215	0,742159
0,814894	0,655082

Ratio	FOLD2
0,988705	1
0,867638	0,87755
0,781107	0,790031

Ratio	FOLD3
1,489562	1
1,159983	0,778741
0,874179	0,58687



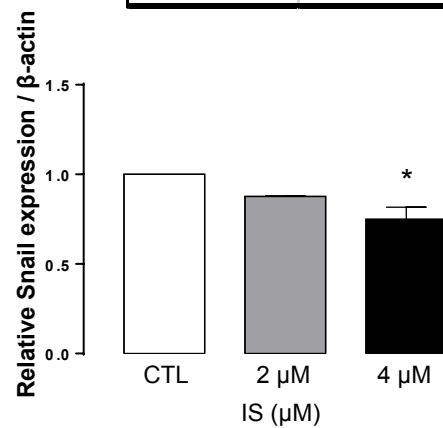
1. IS CTL
2. IS 2 μ M
3. IS 4 μ M



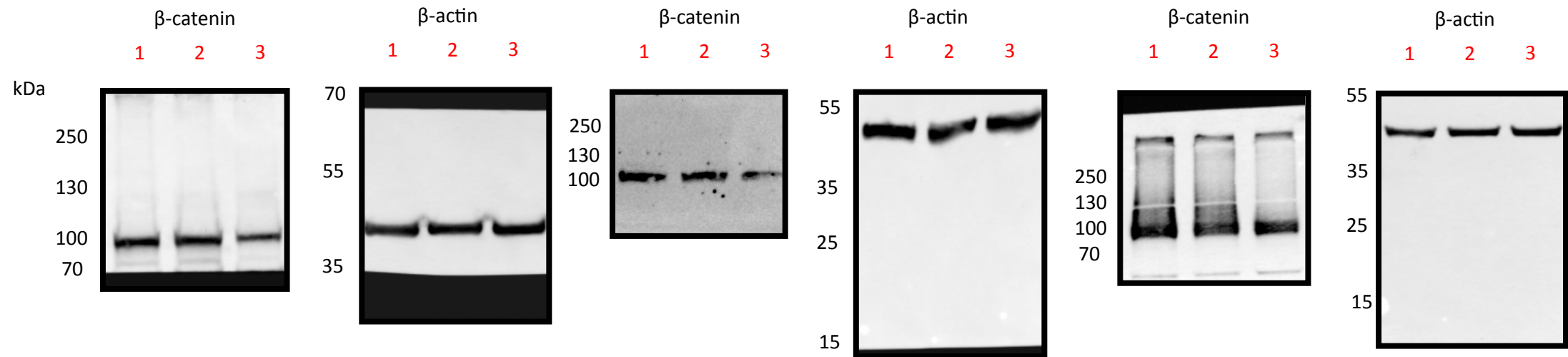
Ratio	FOLD1
1,126607	1
0,97929	0,869238
0,962631	0,854451

Ratio	FOLD2
1,847502	1
1,625449	0,879809
1,420203	0,768715

Ratio	FOLD3
0,700101	1
0,616647	0,880797
0,437507	0,62492



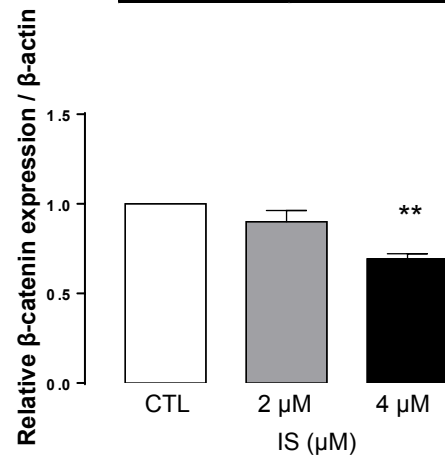
1. IS CTL
2. IS 2 μ M
3. IS 4 μ M



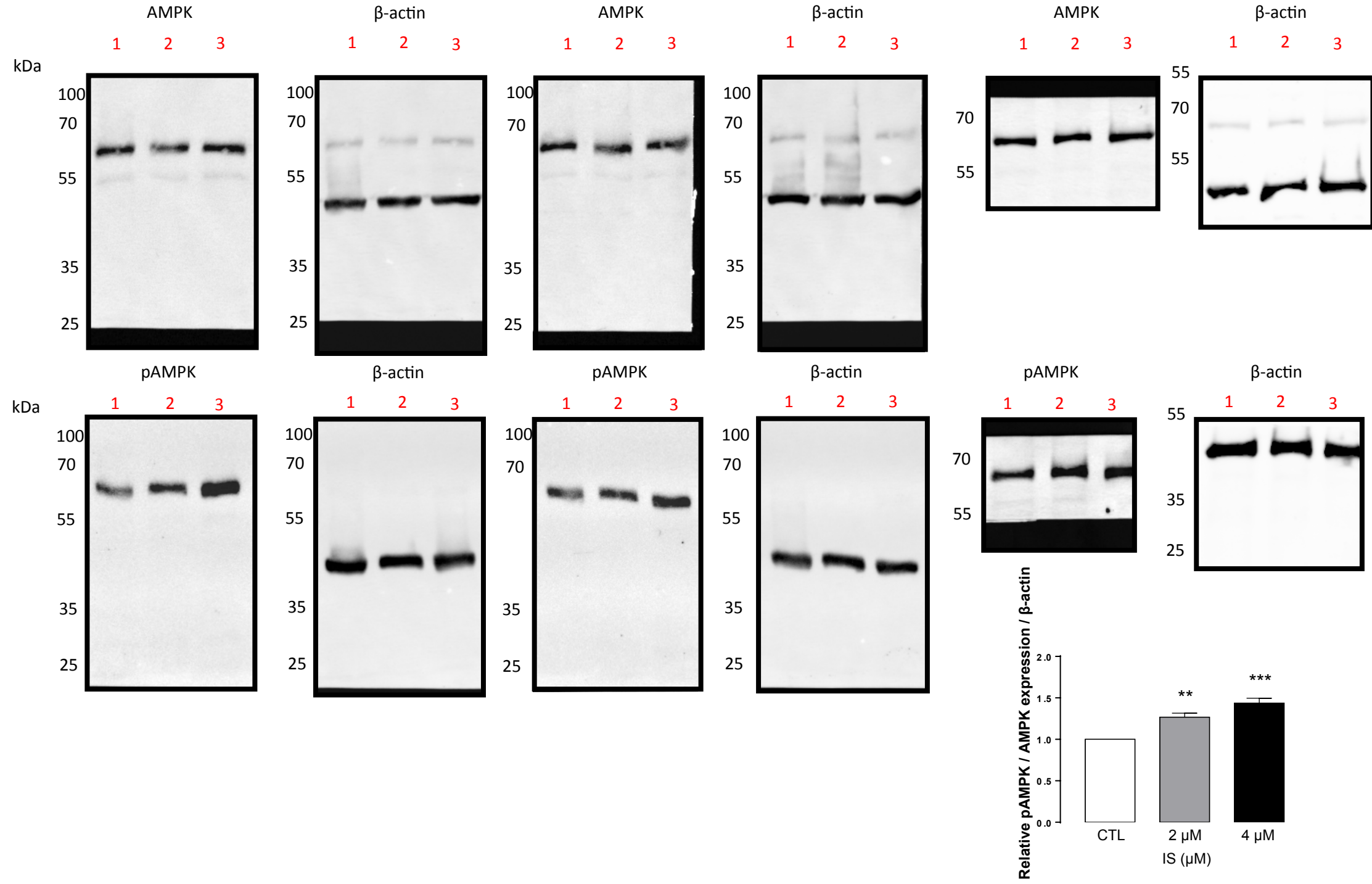
Ratio	FOLD1
1,129706	1
1,028483	0,910399
0,781897	0,692124

Ratio	FOLD2
0,890255	1
0,893151	1,003252
0,571315	0,641743

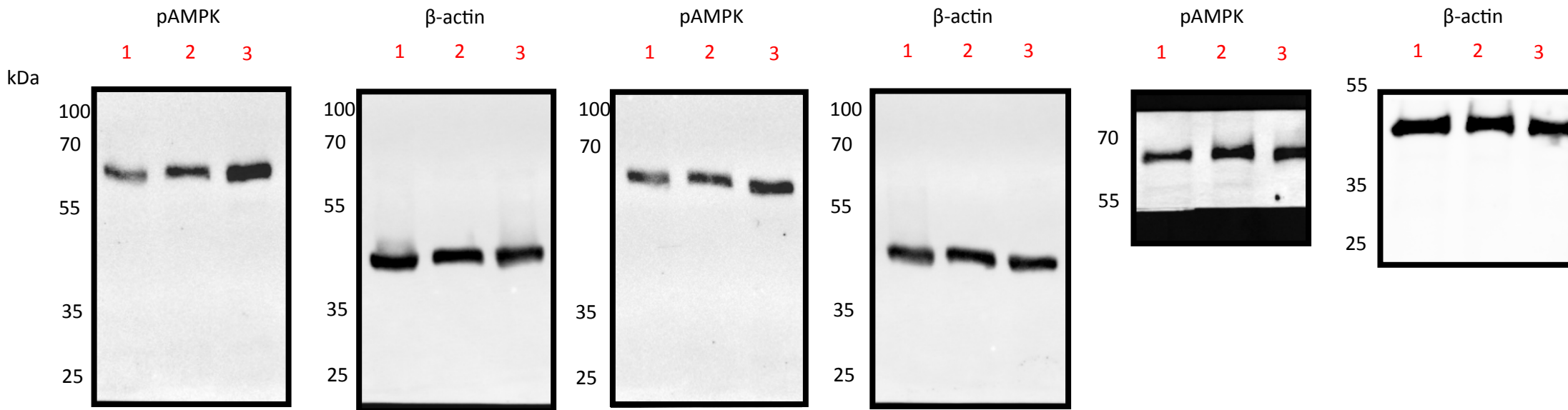
Ratio	FOLD3
1,726375	1
1,362596	0,789282
1,284431	0,744005



1. IS CTL
2. IS 2 μ M
3. IS 4 μ M



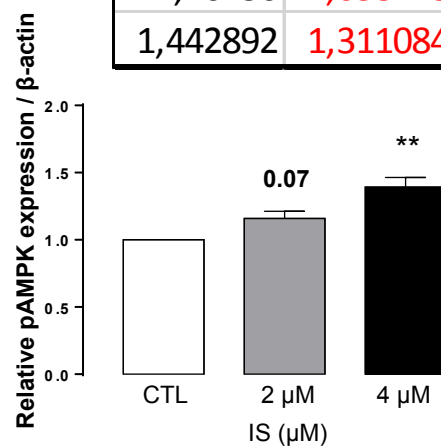
1. IS CTL
2. IS 2 μM
3. IS 4 μM



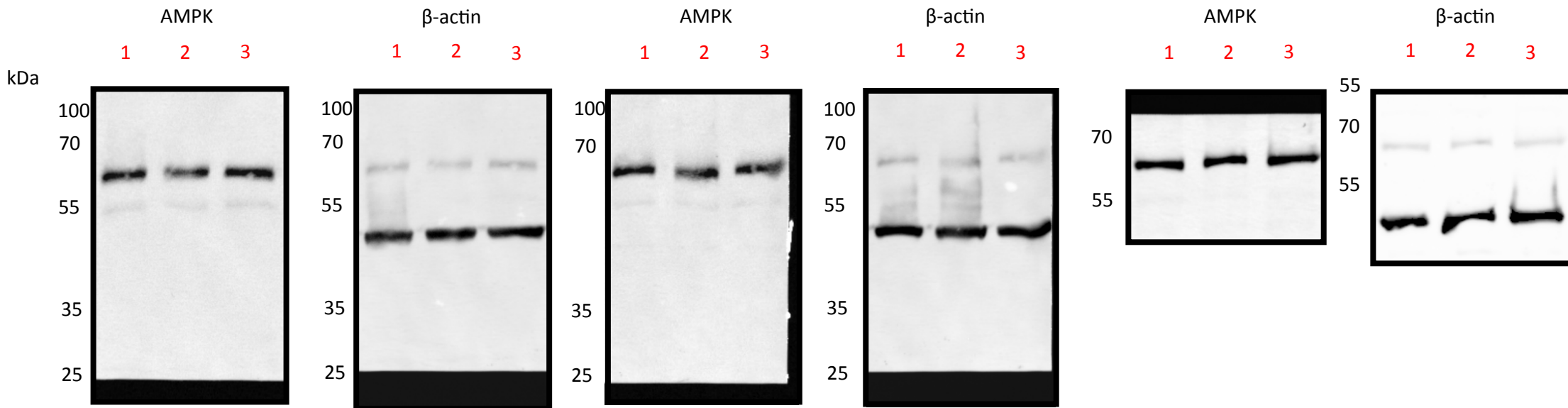
Ratio	FOLD1
0,846173	1
0,99673	1,177927
1,300797	1,53727

Ratio	FOLD2
1,100533	1
1,16456	1,058178
1,442892	1,311084

Ratio	FOLD3
0,740178	1
0,9185	1,240917
0,982191	1,326965



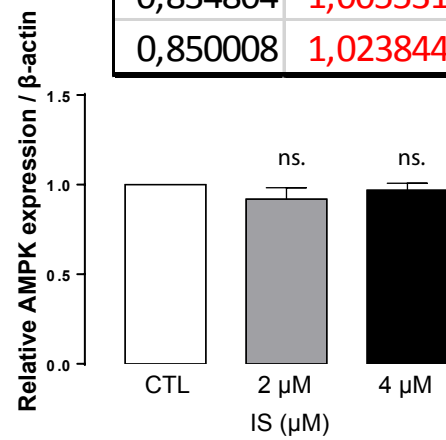
1. IS CTL
2. IS 2 μ M
3. IS 4 μ M



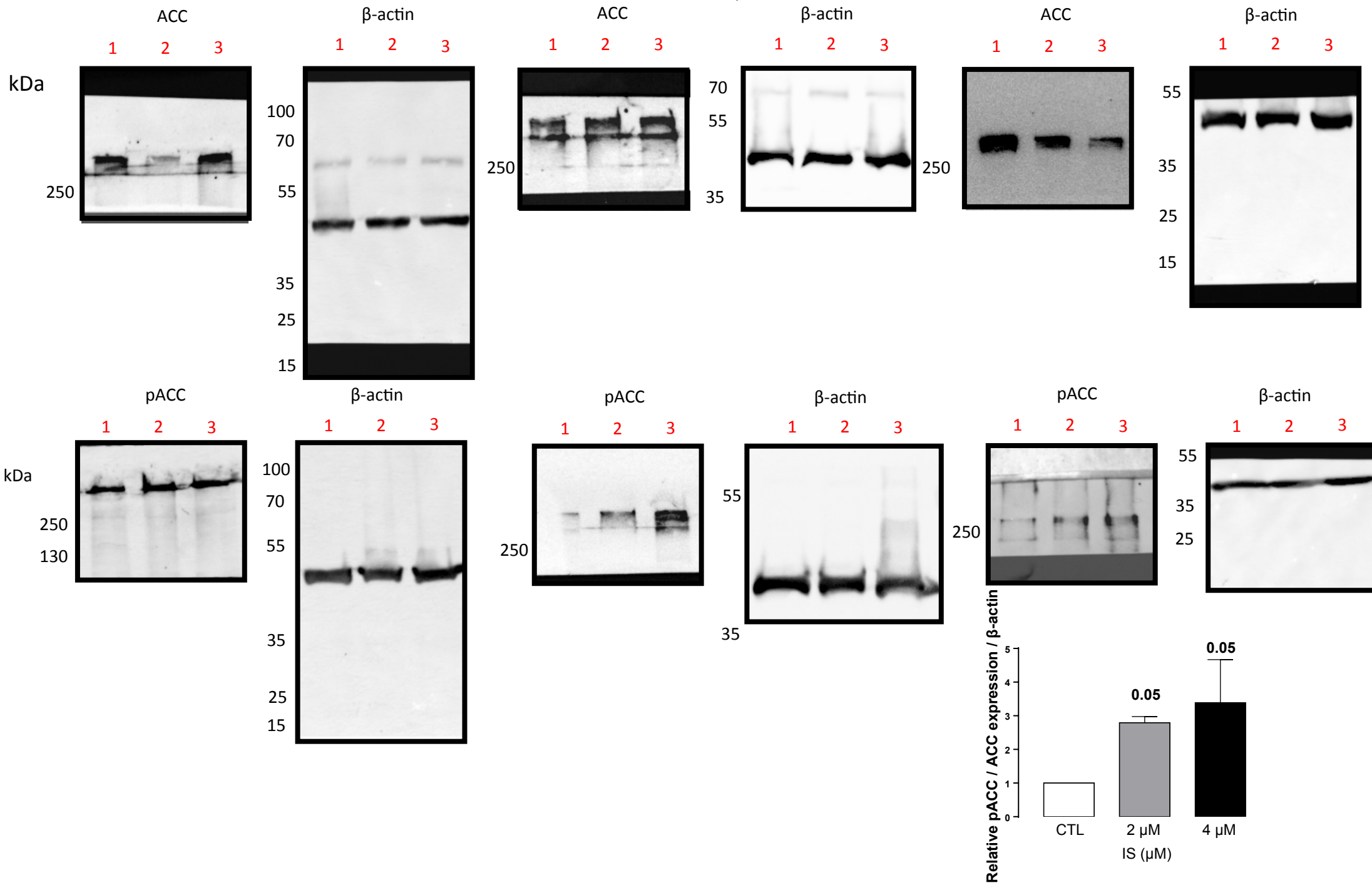
Ratio	FOLD1
1,055638	1
0,83676	0,792658
1,046525	0,991368

Ratio	FOLD2
0,830212	1
0,834804	1,005531
0,850008	1,023844

Ratio	FOLD3
1,269964	1
1,217653	0,958808
1,131911	0,891294



1. IS CTL
2. IS 2 μ M
3. IS 4 μ M



1. IS CTL
2. IS 2 μ M
3. IS 4 μ M

pACC

β -actin

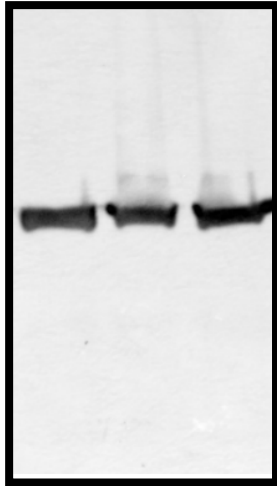
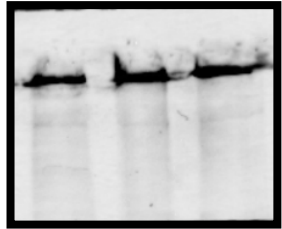
1 2 3

1 2 3

kDa

250
130

100
70
55
35
25
15



Ratio	FOLD1
1,156659	1
1,566244	1,354111
1,452683	1,25593

pACC

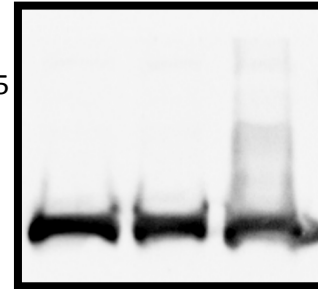
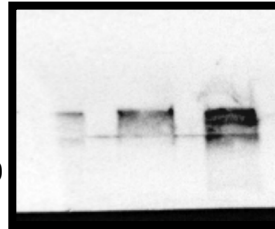
β -actin

1 2 3

1 2 3

250

55
35



Ratio	FOLD2
0,212552	1
0,508412	2,391948
1,079342	5,078024

pACC

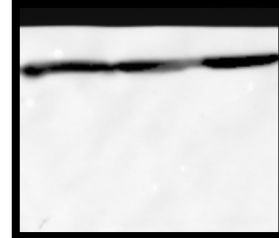
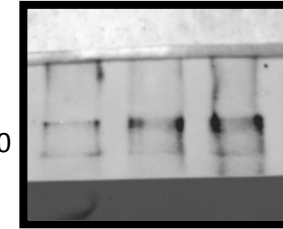
β -actin

1 2 3

1 2 3

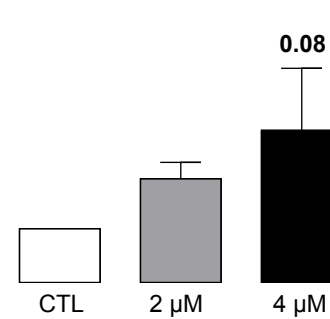
250

55
35
25



Ratio	FOLD3
0,31704	1
0,647604	2,042655
0,68453	2,159125

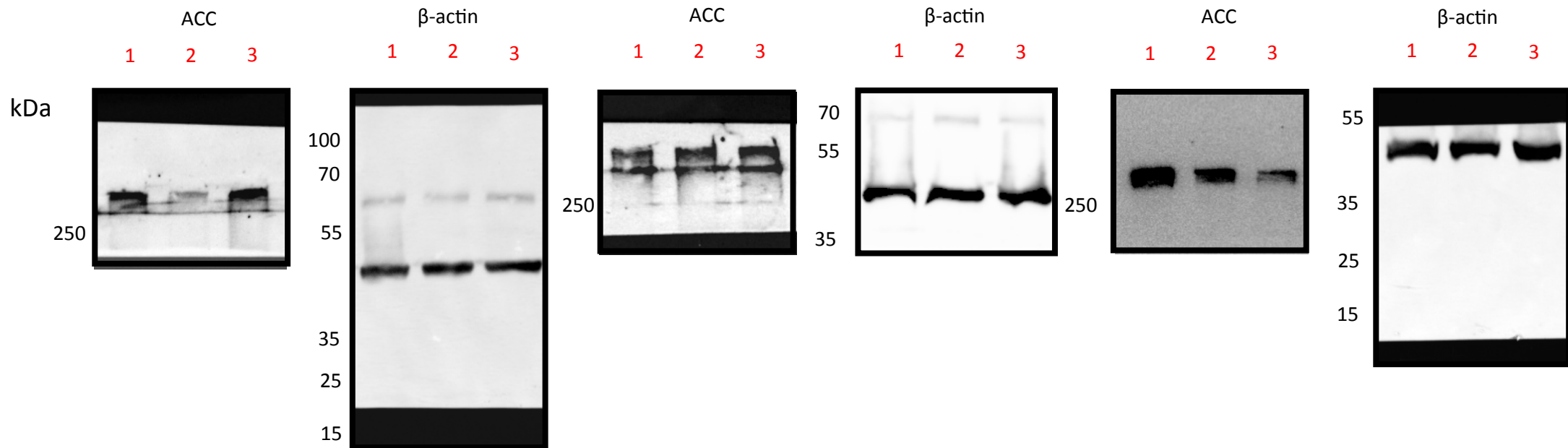
Relative pACC expression / β -actin



IS (μ M)

0.08

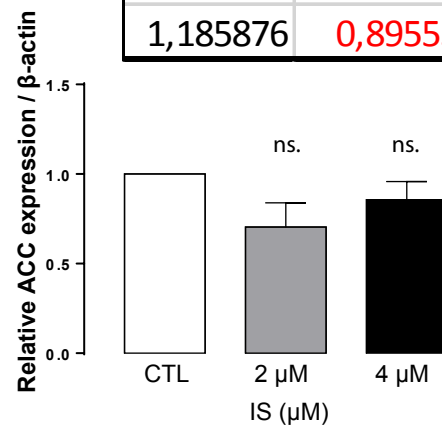
1. IS CTL
2. IS 2 μ M
3. IS 4 μ M



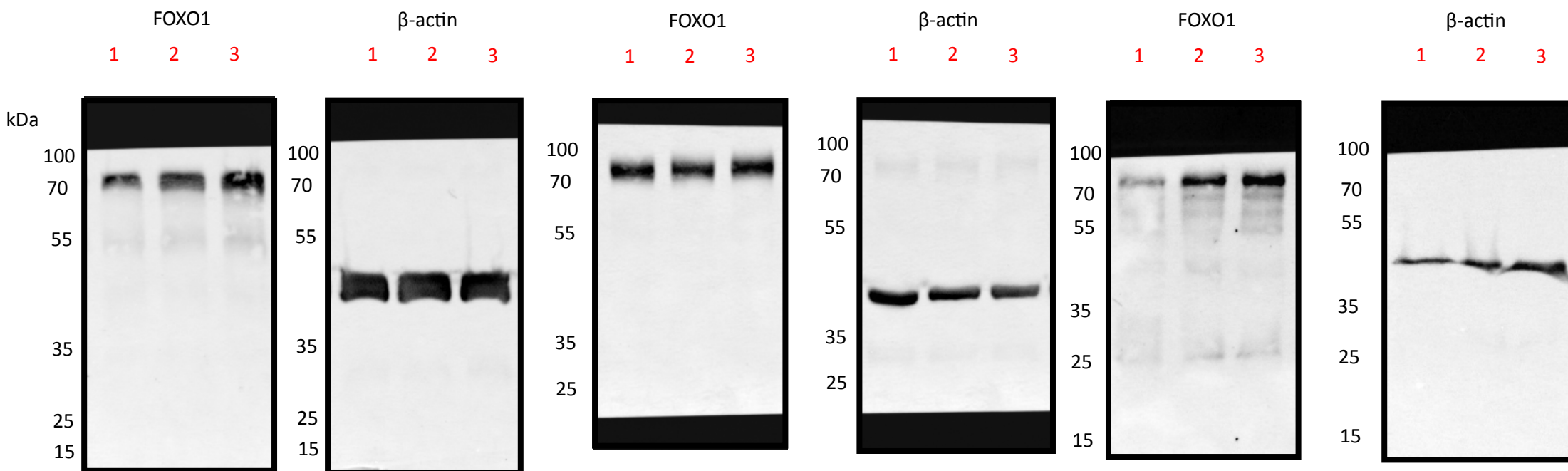
Ratio	FOLD1
1,010135	1
0,440473	0,436054
1,020582	1,010342

Ratio	FOLD2
1,324217	1
1,12833	0,852073
1,185876	0,89553

Ratio	FOLD3
1,039074	1
0,857648	0,825396
0,689568	0,663637



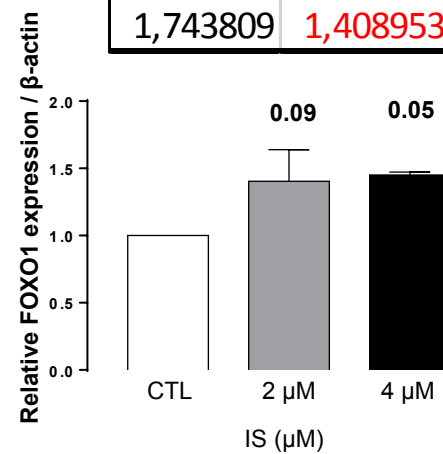
1. IS CTL
2. IS 2 μ M
3. IS 4 μ M

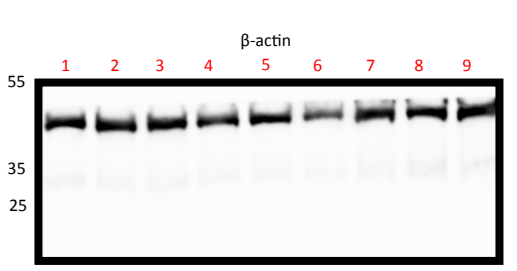
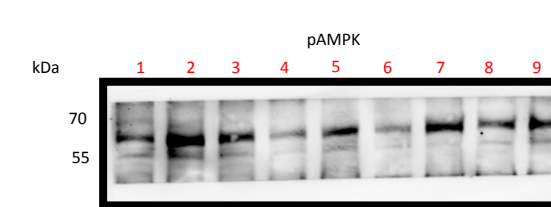
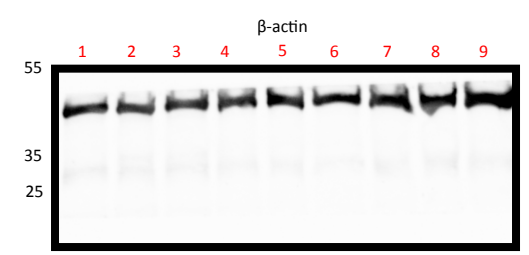
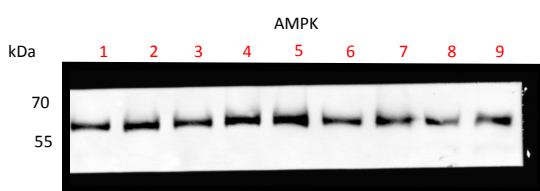
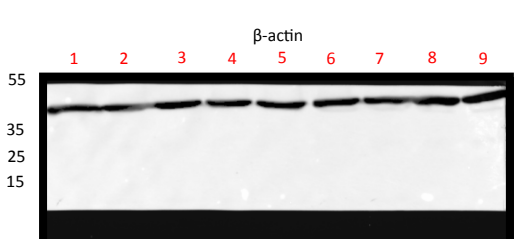
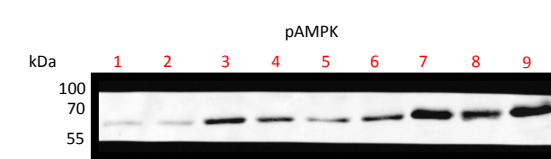
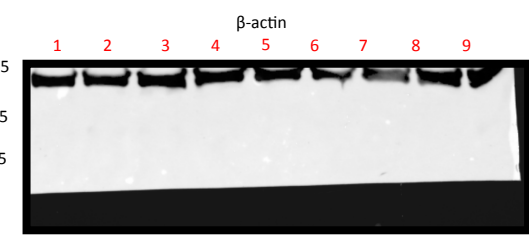
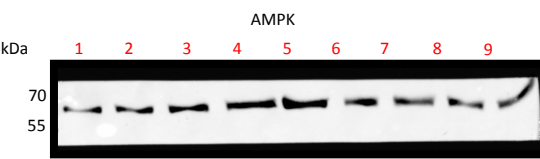
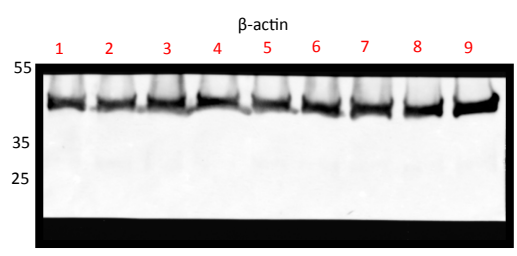
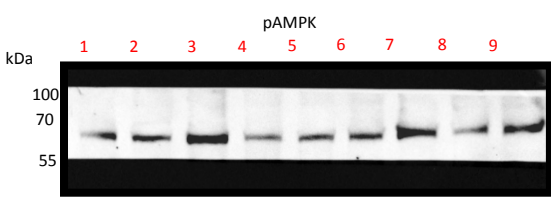
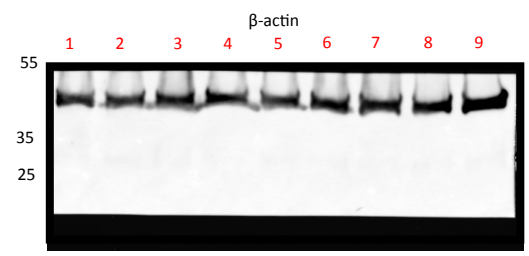
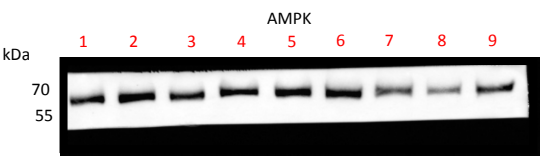


Ratio	FOLD1
0,636327	1
0,78858	1,239268
0,938178	1,474364

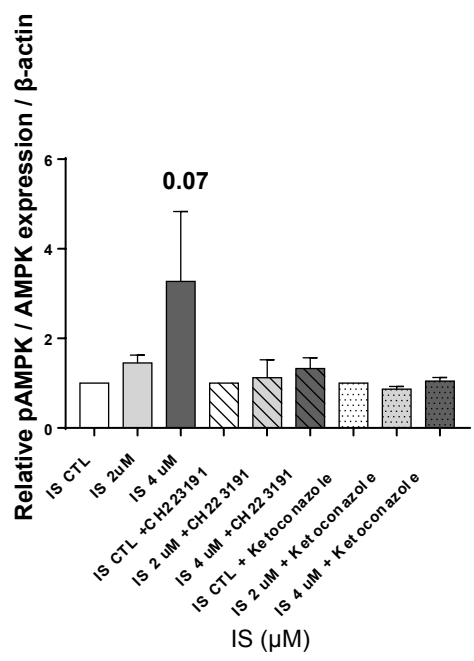
Ratio	FOLD2
1,237663	1
1,36989	1,106836
1,743809	1,408953

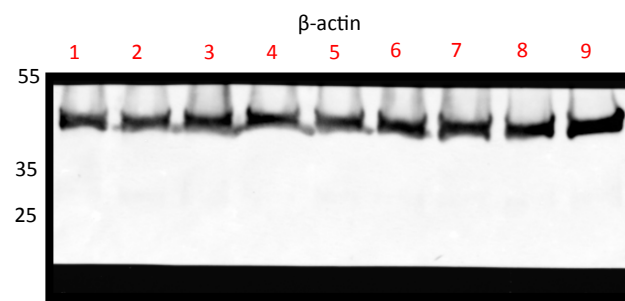
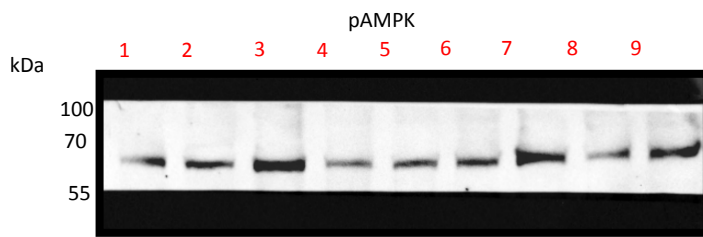
Ratio	FOLD3
0,830181	1
1,549707	1,86671
1,221166	1,470964



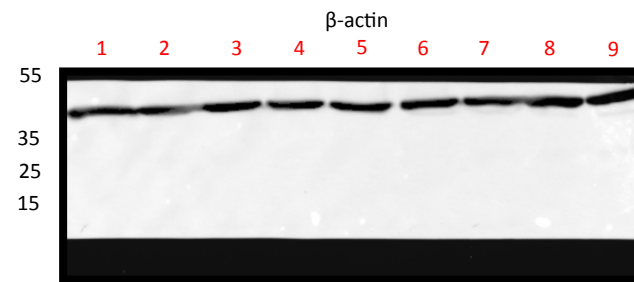
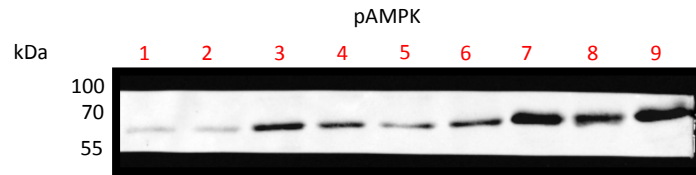


- | | |
|-----------------|---------------------|
| 1. IS CTL | |
| 2. IS 2 μ M | |
| 3. IS 4 μ M | |
| 4. IS CTL | |
| 5. IS 2 μ M | CH223191 (AHRi) |
| 6. IS 4 μ M | |
| 7. IS CTL | |
| 8. IS 2 μ M | Ketoconazole (PXRi) |
| 9. IS 4 μ M | |





Ratio	FOLD1
0,586065	1
0,806501	1,37613
1,050806	1,792986
0,597099	1
0,665748	1,114971
0,686264	1,14933
0,87988	1
0,440016	0,500086
0,75668	0,859982

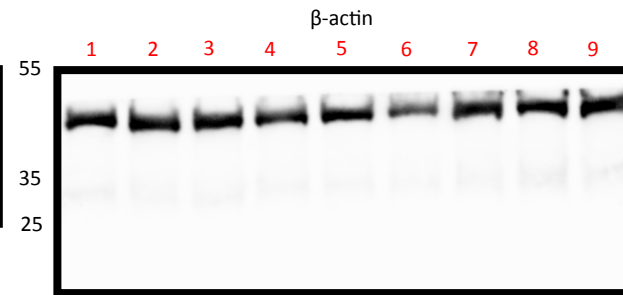
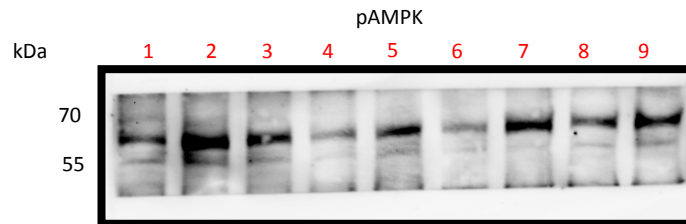


Ratio	FOLD2
0,133408	1
0,162416	1,217433
0,706727	5,297473
0,536039	1
0,30214	0,563654
0,589104	1,098996
1,211222	1
0,778054	0,642371
1,085168	0,895929

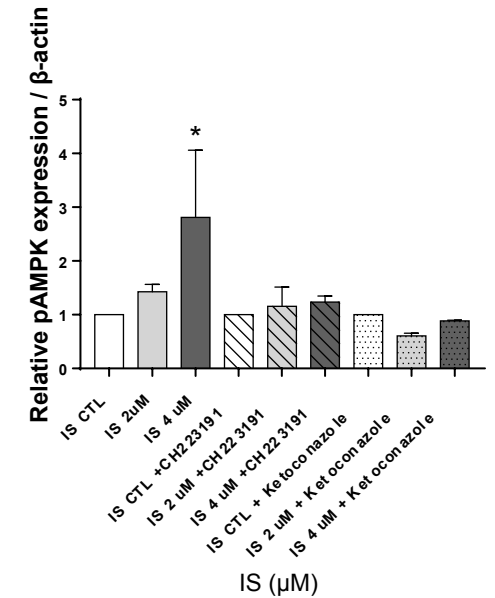
1. IS CTL
2. IS 2 μM
3. IS 4 μM
4. IS CTL
5. IS 2μM
6. IS 4 μM
7. IS CTL
8. IS 2 μM
9. IS 4 μM

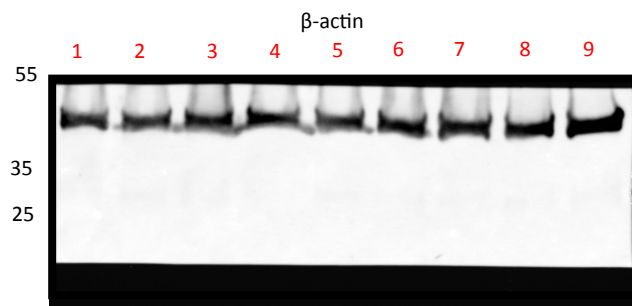
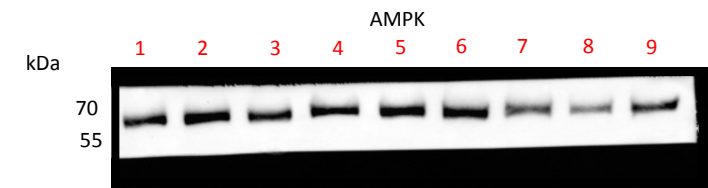
CH223191 (AHRi)

Ketoconazole (PXRi)

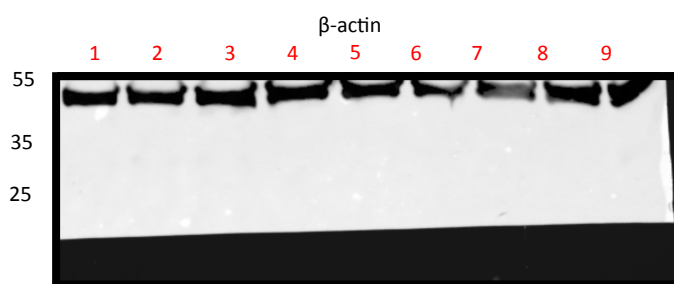
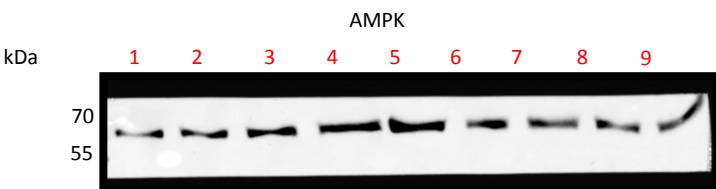


Ratio	FOLD3
0,702414	1
1,184402	1,686188
0,941483	1,340353
0,518128	1
0,930346	1,795592
0,756666	1,460385
1,133327	1
0,761414	0,671839
1,016346	0,896781





Ratio	FOLD1
1,012919	1
1,205035	1,189666
0,934644	0,922723
1,019117	1
1,247952	1,224542
1,058944	1,03908
0,670677	1
0,439741	0,655668
0,641101	0,955902

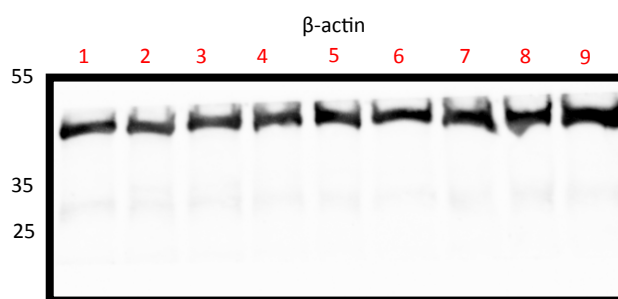
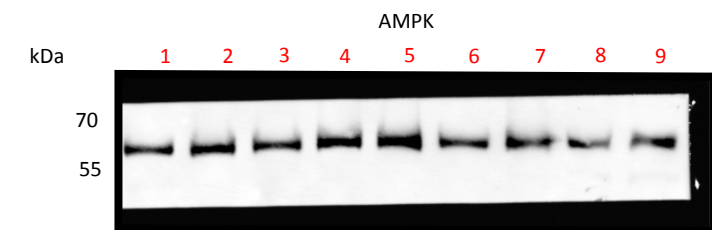


Ratio	FOLD2
0,691984	1
0,585634	0,846312
0,57487	0,830757
1,002531	1
1,008465	1,005918
1,034736	1,032123
1,024272	1
0,678026	0,661959
0,779981	0,761498

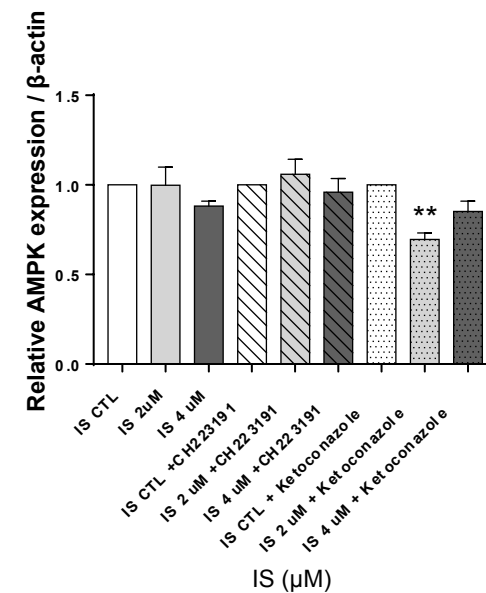
1. IS CTL
2. IS 2 μ M
3. IS 4 μ M
4. IS CTL
5. IS 2 μ M
6. IS 4 μ M
7. IS CTL
8. IS 2 μ M
9. IS 4 μ M

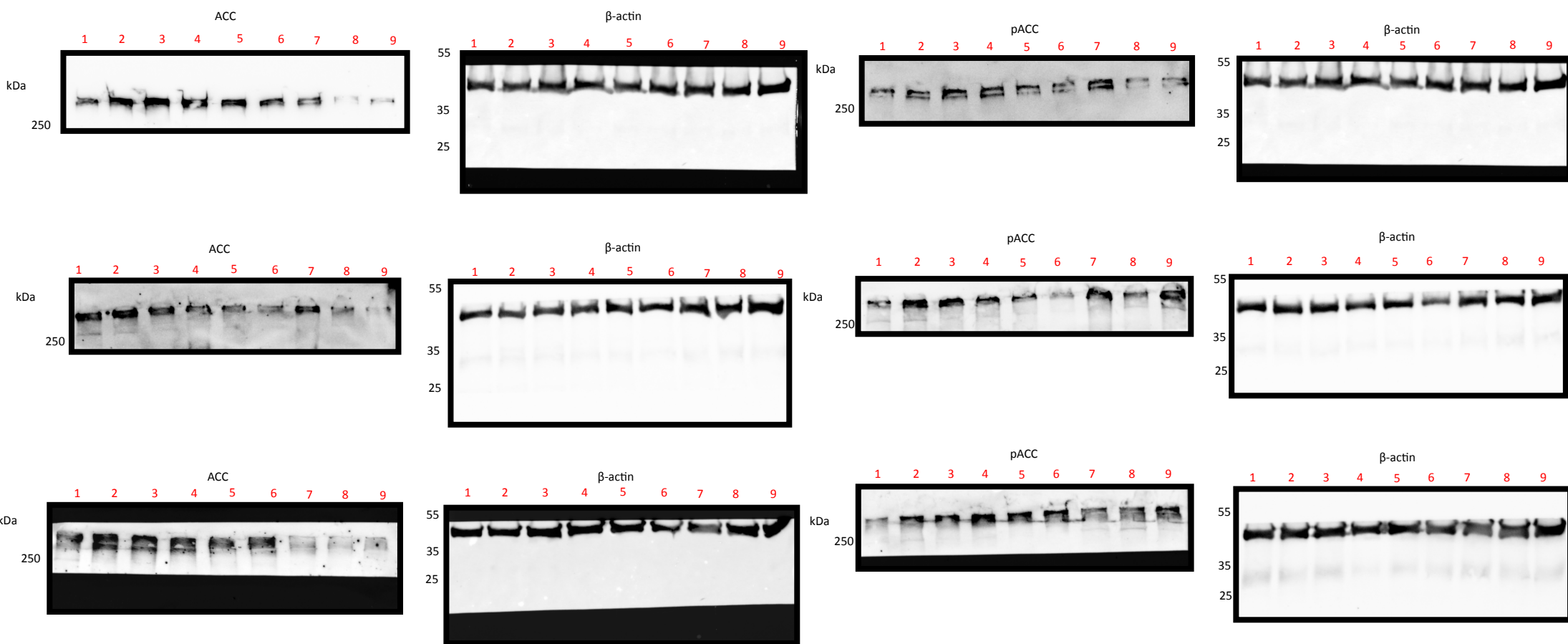
CH223191 (AHRi)

Ketoconazole (PXRi)



Ratio	FOLD3
1,252167	1
1,197949	0,9567
1,117976	0,892833
1,224202	1
1,158571	0,946389
0,989723	0,808464
0,868631	1
0,668091	0,769131
0,729483	0,839808

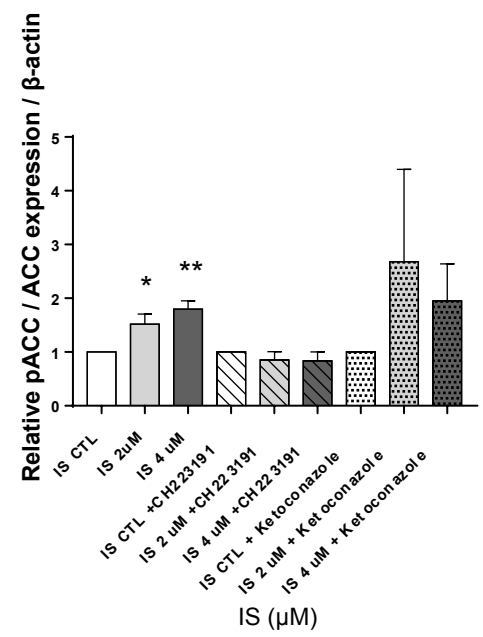


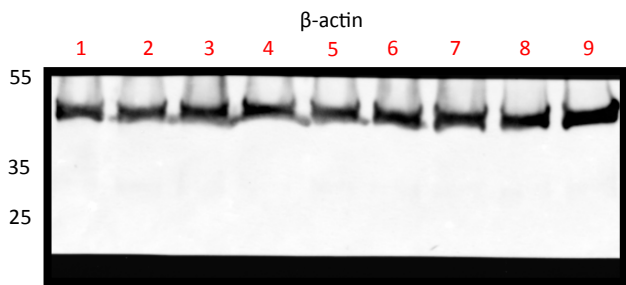
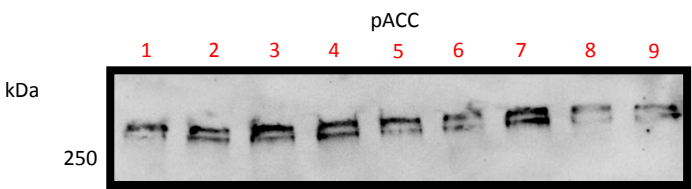


1. IS CTL
2. IS 2 μ M
3. IS 4 μ M
4. IS CTL
5. IS 2 μ M
6. IS 4 μ M
7. IS CTL
8. IS 2 μ M
9. IS 4 μ M

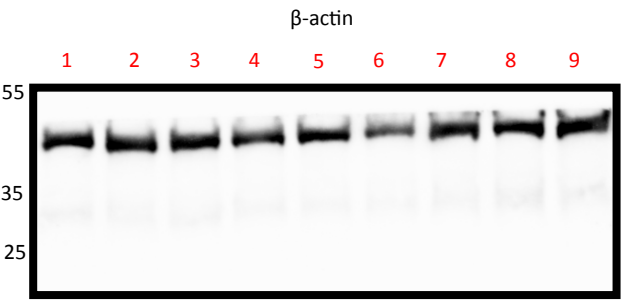
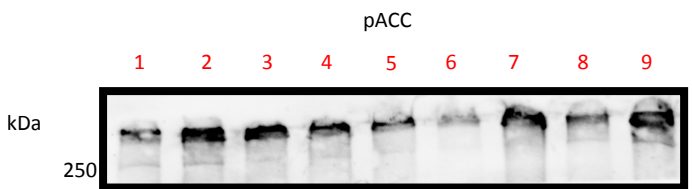
CH223191 (AHRi)

Ketoconazole (PXRi)

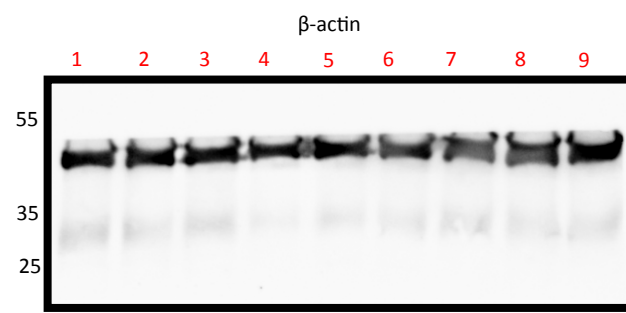
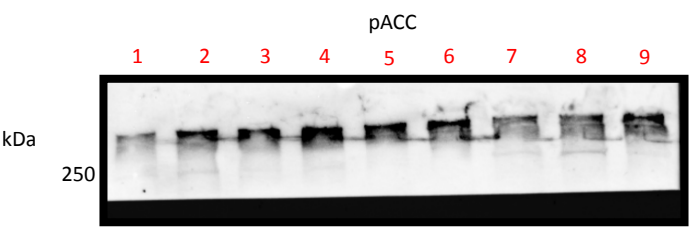




Ratio	FOLD1
0,835646	1
0,95484	1,142637
1,137491	1,361212
0,926828	1
0,972478	1,049255
0,655647	0,70741
0,953468	1
0,532709	0,558707
0,558458	0,585712



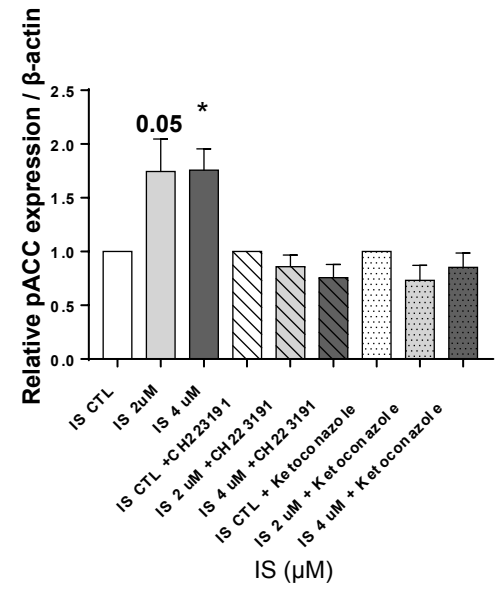
Ratio	FOLD2
0,569724	1
1,139237	1,99963
1,097562	1,926481
1,024364	1
0,689088	0,672698
0,58739	0,573419
1,030771	1
0,645382	0,626116
1,003976	0,974005

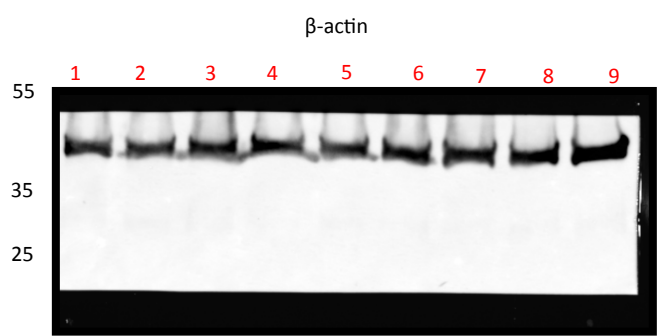
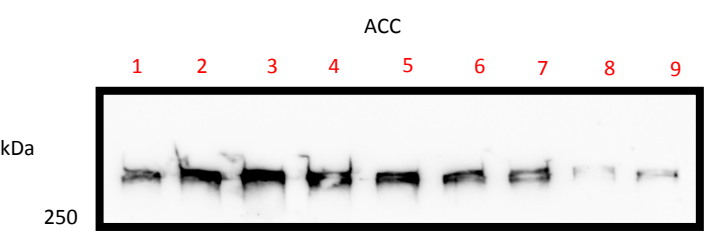


Ratio	FOLD3
0,44916	1
0,939248	2,091122
0,891	1,983706
1,122532	1
0,958073	0,853492
1,110989	0,989717
0,80566	1
0,813771	1,010067
0,804149	0,998125

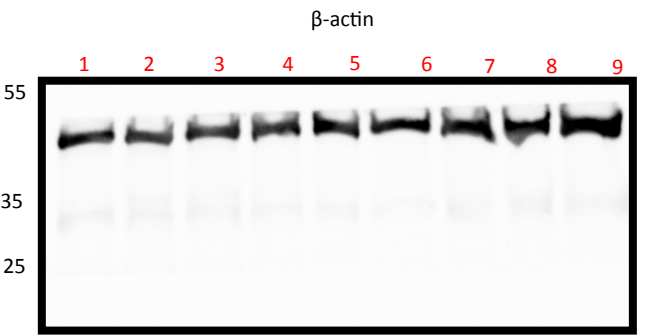
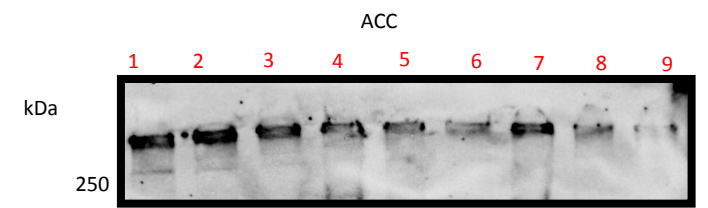
- IS CTL
 - IS 2 μ M
 - IS 4 μ M
 - IS CTL
 - IS 2 μ M
 - IS 4 μ M
 - IS CTL
 - IS 2 μ M
 - IS 4 μ M
- CH223191 (AHRI)

Ketoconazole (PXRi)



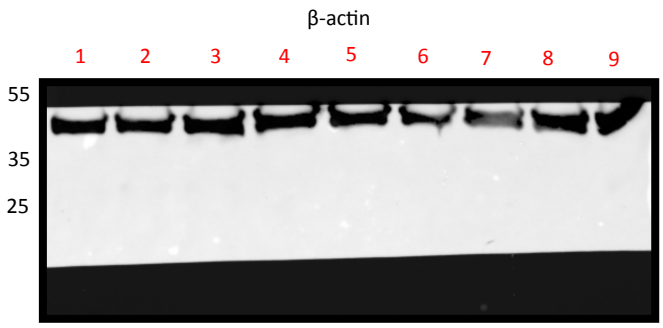
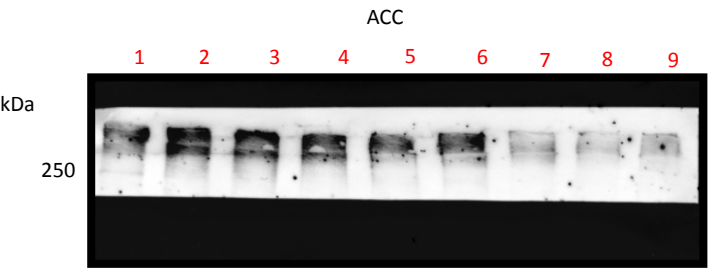


Ratio	FOLD1
1,019173	1
1,235446	1,212205
1,134918	1,113568
0,851801	1
1,177684	1,382582
0,812844	0,954265
0,59963	1
0,099087	0,165247
0,235893	0,393398

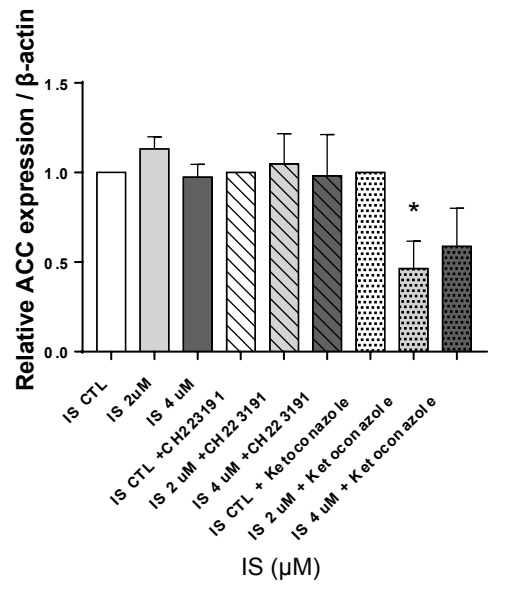


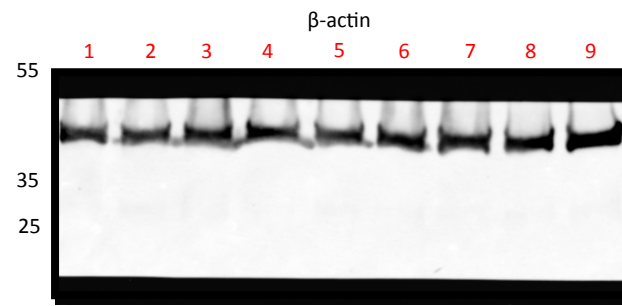
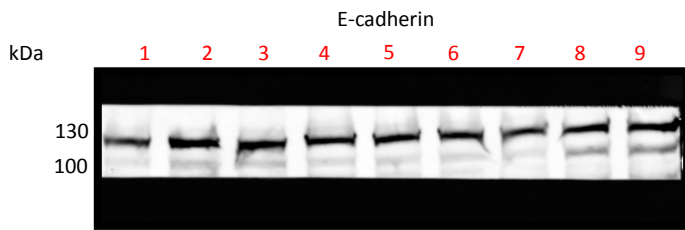
Ratio	FOLD2
1,131836	1
1,341833	1,185537
1,051554	0,92907
0,930772	1
0,779709	0,837701
0,554969	0,596246
0,881549	1
0,580318	0,658294
0,313305	0,355403

- 1. IS CTL
 - 2. IS 2 μ M
 - 3. IS 4 μ M
 - 4. IS CTL
 - 5. IS 2 μ M
 - 6. IS 4 μ M
 - 7. IS CTL
 - 8. IS 2 μ M
 - 9. IS 4 μ M
- CH223191 (AHRi)
- Ketoconazole (PXRi)

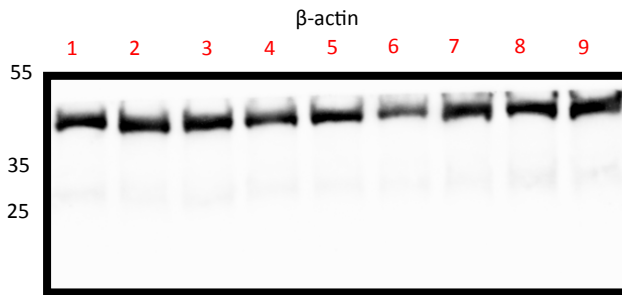
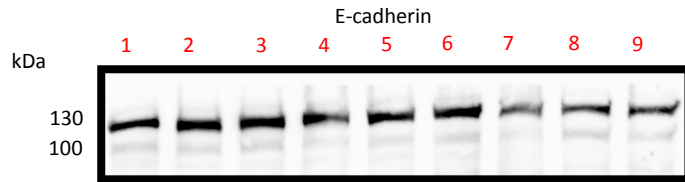


Ratio	FOLD3
0,88732	1
0,88519	0,9976
0,781917	0,881212
0,836323	1
0,771288	0,922236
1,165506	1,393607
0,439949	1
0,2513	0,571203
0,446038	1,01384

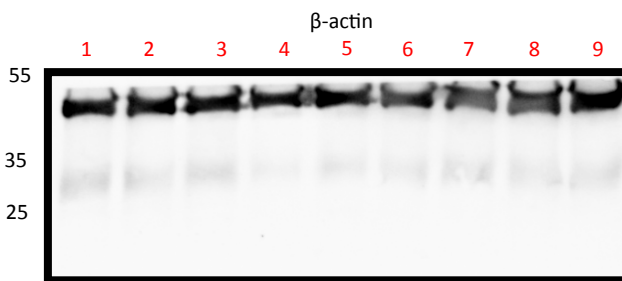
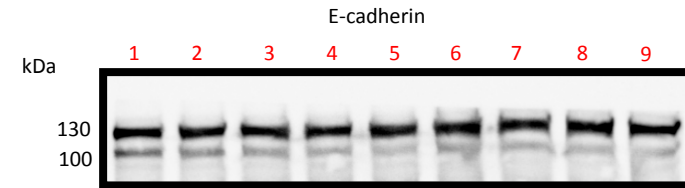




Ratio	FOLD1
0,835702	1
1,334903	1,597342
1,316719	1,575584
1,022428	1
1,117102	1,092598
0,932776	0,912314
0,77108	1
0,885529	1,148428
0,836988	1,085475



Ratio	FOLD2
0,74069	1
1,074946	1,451276
1,205893	1,628067
0,980846	1
0,909234	0,92699
1,524719	1,554494
0,569223	1
0,582009	1,022462
0,619371	1,0881



Ratio	FOLD3
0,866347	1
1,086052	1,253599
1,075969	1,24196
1,027956	1
0,954151	0,928202
1,230947	1,197471
1,321434	1
1,13866	0,861685
0,885106	0,669807

1. IS CTL
 2. IS 2 μ M
 3. IS 4 μ M
 4. IS CTL
 5. IS 2 μ M
 6. IS 4 μ M
 7. IS CTL
 8. IS 2 μ M
 9. IS 4 μ M
- CH223191 (AHRi)
- Ketoconazole (PXRi)

