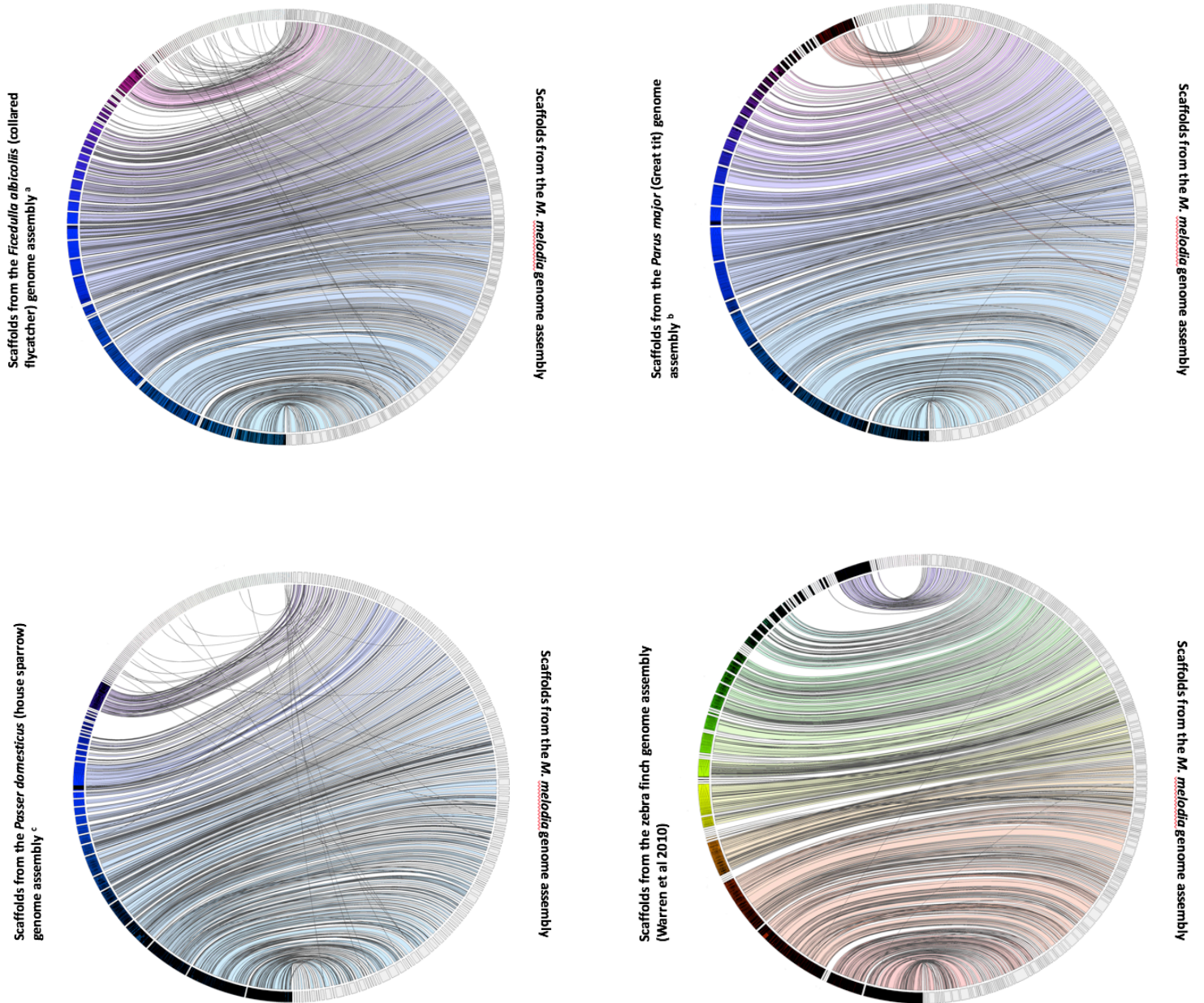


Supplementary figure S3 : Jupiter plots correlating flycatcher, Great tit, house sparrow and zebra finch genome assemblies to the song sparrow genome assembly, considering scaffolds greater than 100 kbp in the reference genomes and the largest scaffolds representing 80% of the song sparrow genome.



^a https://www.ncbi.nlm.nih.gov/assembly/GCF_000247815.1

^b https://www.ncbi.nlm.nih.gov/assembly/GCF_001522545.3

^c https://www.ncbi.nlm.nih.gov/assembly/GCA_001700915.1

