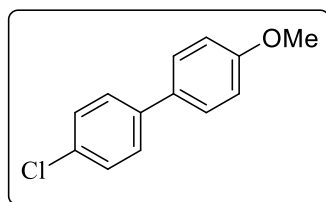


Compound Information

Name:	<ul style="list-style-type: none">• 4-Chloro-4'-methoxy-biphenyl• 4'-Chloro-4-methoxy-biphenyl• 1-Chloro-4-(4-methoxybhenyl)benzene
Chemical formula:	C ₁₃ H ₁₁ ClO
Molecular weight:	218.6800
PubChem CID:	612791 (https://pubchem.ncbi.nlm.nih.gov/compound/612791)
InChI Key:	PUVSUQVVUYQOBK-UHFFFAOYSA-N
CAS number:	58970-19-7

Structure:



GC-MS:	m/z (relative abundance %): 218.1 (M^+ , 100), 203.0 (49), 175.0 (43), 149.0 (15), 139.1 (32) (2)
Purity:	>99% (determined based on relative peak area by GC-MS)
State:	White solid

References:

1. McLean, M. R.; Bauer, U.; Amaro, A. R.; Robertson, L. W. (1996) Identification of catechol and hydroquinone metabolites of 4-monochlorobiphenyl. *Chem Res Toxicol* **9**, 158-164
2. Li, X.; Robertson, L. W.; Lehmler, H.-J. (2009) Electron ionization mass spectral fragmentation study of sulfation derivatives of polychlorinated biphenyls. *Chem Cent J* **3**:5

Instruments and software used to record and process raw data for 4-chloro-4'-methoxy-biphenyl

File	Instruments for raw data	Software to process raw data
GC-MS raw.D.rar	Mass spectra of all compounds were recorded on an Agilent 7890A gas chromatograph equipped with an Agilent 5975C Inert Mass Selective Detector (Agilent Technologies, CA, USA)	Agilent ChemStation is commonly used to process the raw data in .d format. Raw data can be converted into the desired format using ProteoWizard software.