

**The pregnancy loss: insights from a pregnant rat model with clinical  
features of pregnant polycystic ovary syndrome**

Linus R Shao<sup>1</sup>, Min Hu<sup>1,2</sup>, Yuehui Zhang<sup>1,3</sup>, Mats Brännström<sup>4</sup> and Håkan Billig<sup>1</sup>

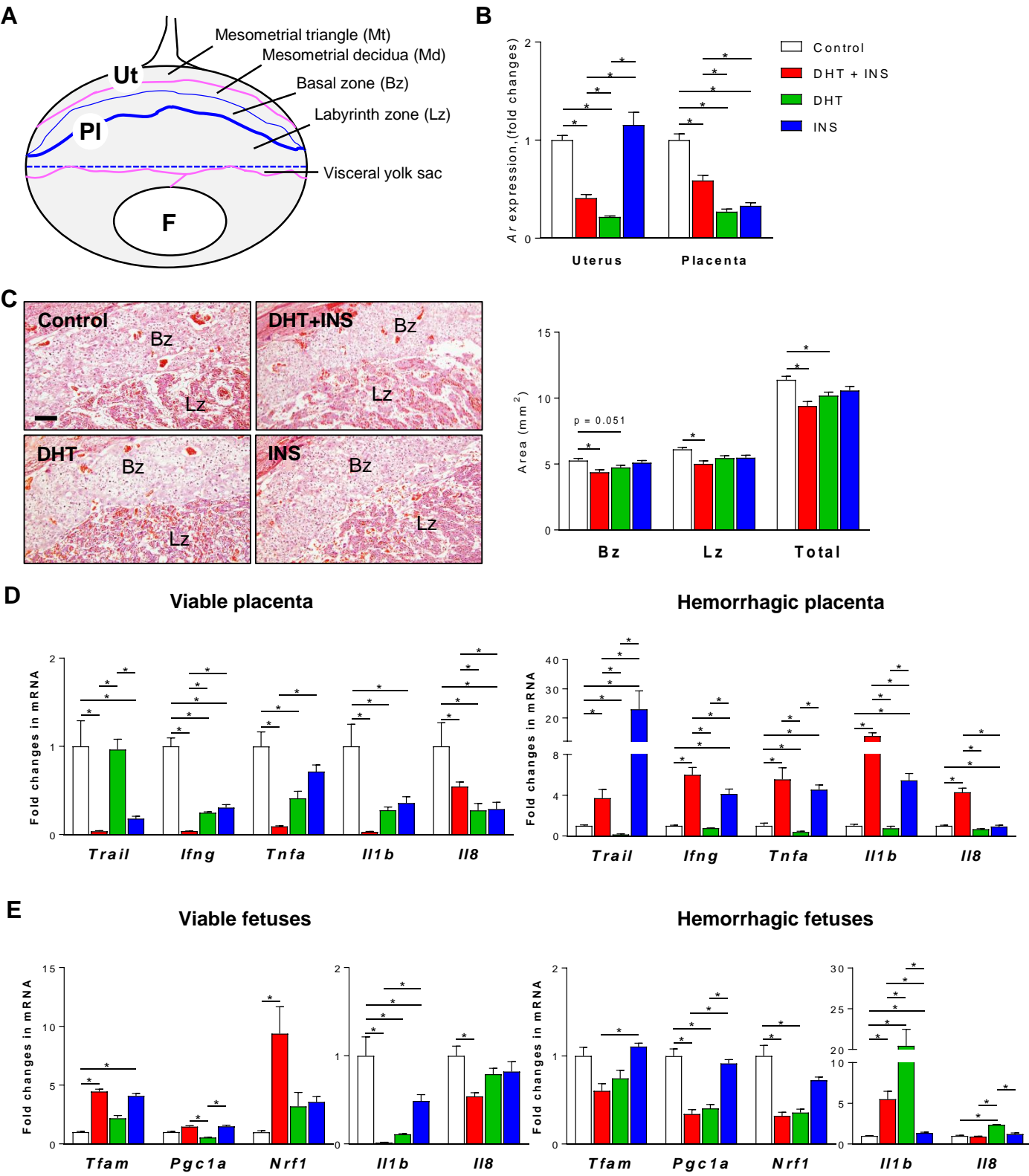
<sup>1</sup> Department of Physiology/Endocrinology, Institute of Neuroscience and Physiology, The Sahlgrenska Academy, University of Gothenburg, 40530 Gothenburg, Sweden

<sup>2</sup> Department of Traditional Chinese Medicine, The First Affiliated Hospital of Guangzhou Medical University, 510120 Guangzhou, China

<sup>3</sup> Department of Obstetrics and Gynecology, Key Laboratory and Unit of Infertility in Chinese Medicine, First Affiliated Hospital, Heilongjiang University of Chinese Medicine, 150040 Harbin, China

<sup>4</sup> Department of Obstetrics and Gynecology, Sahlgrenska University Hospital, Sahlgrenska Academy, University of Gothenburg, 41345 Gothenburg, Sweden

Figure 1



**Table 1** Comparison of aberrant endocrine features in DHT+INS-treated pregnant rats and pregnant PCOS patients

During pregnancy	DHT+INS vs. Control in rats	PCOS vs. Non-PCOS in humans
E2	—	—
P4	—	—
T	↑	↑
A4	↑	↑
DHEA	↑	↑
SHBG	—	↓
AMH	↑	↑
OGTT	↑	↑
DHT, 5α-dihydrotestosterone; INS, insulin; E2, 17β-estradiol; P4, progesterone; T, testosterone; A4, androstenedione; DHEA, dehydroepiandrosterone; SHBG, sex hormone-binding globulin; AMH, anti-Müllerian hormone; OGTT, oral glucose tolerance tests. "—" indicates no change; "↑" indicates increased level; "↓" indicates decreased level.		