

## Supplementary Appendix

### A.1. Is the IT-NE Sector Really New?

We have chosen the label IT-NE to emphasize the relative newness of this occupational grouping. Indeed, the selected occupations are of much more recent vintage than other classes.

First, typical of an emerging sector, much of the occupational classes we study are new (*i.e.* new categories in the occupational classification). Table A.1.1, which gives the codes and titles of NE occupational classes according to the 1991 and 2006 occupational classifications, shows that IT-NE occupational classes have been ramified over time. Thus, while IT-NE employment was grouped into only three classes in the 1991 Standard Occupational Classification, it was grouped into ten occupational classes in the 2006 National Occupational Classification (the 10 classes in the 2006 NOC are exactly equivalent to the three classes in the 1991 SOC).

Table A.1.1. IT-NE occupational classes according to the 1991 SOC and the 2006 NOC

<b>1991 Standard Occupational Classification</b>	<b>2006 National Occupational Classification</b>
A122 Information Systems and Data Processing Managers	0213 Computer and Information Systems Managers
C062 Computer Systems Analysts	2147 Computer Engineers (Except Software Engineers and Designers)
C063 Computer Programmers	2171 Information Systems Analysts and Consultants
	2172 Database Analysts and Data Administrators
	2173 Software Engineers and Designers
	2174 Computer Programmers and Interactive Media Developers
	2175 Web Designers and Developers
	2281 Computer Network Technicians
	2282 User Support Technicians
	2283 Systems Testing Technicians

Second, and once again typical of an emerging sector, NE employment has grown much faster than other high-order services, including arts-based “creative” industries. Figure A.1.1 shows growth in total employment, NE employment and two related industry classes for the three metro areas over

1981-2011. As occupation classifications underwent numerous changes before 1996, NE employment is defined using an industry-based definition. Two points are worth noting: 1) the difference in employment growth between NE and two sister high-order services. Creative and business service jobs grew faster than employment as a whole, but nothing compared to NE employment; 2) the bust in 2000-2001 of the techno bubble, but finally only a blip in the ascending growth path of NE employment. Figure A.1.3 (using an occupation-based definition of the NE) shows a similar trend over 1996-2011.

Figure A.1.1. Total Employment and Three Industry Groupings. Toronto, Montreal, and Vancouver (1981-2011).

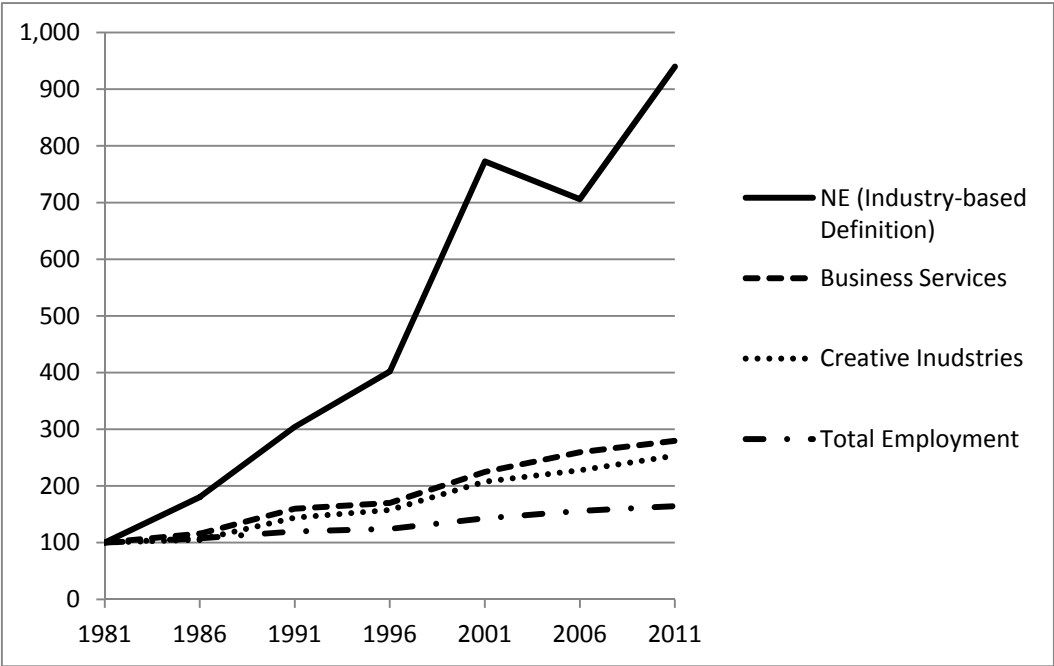
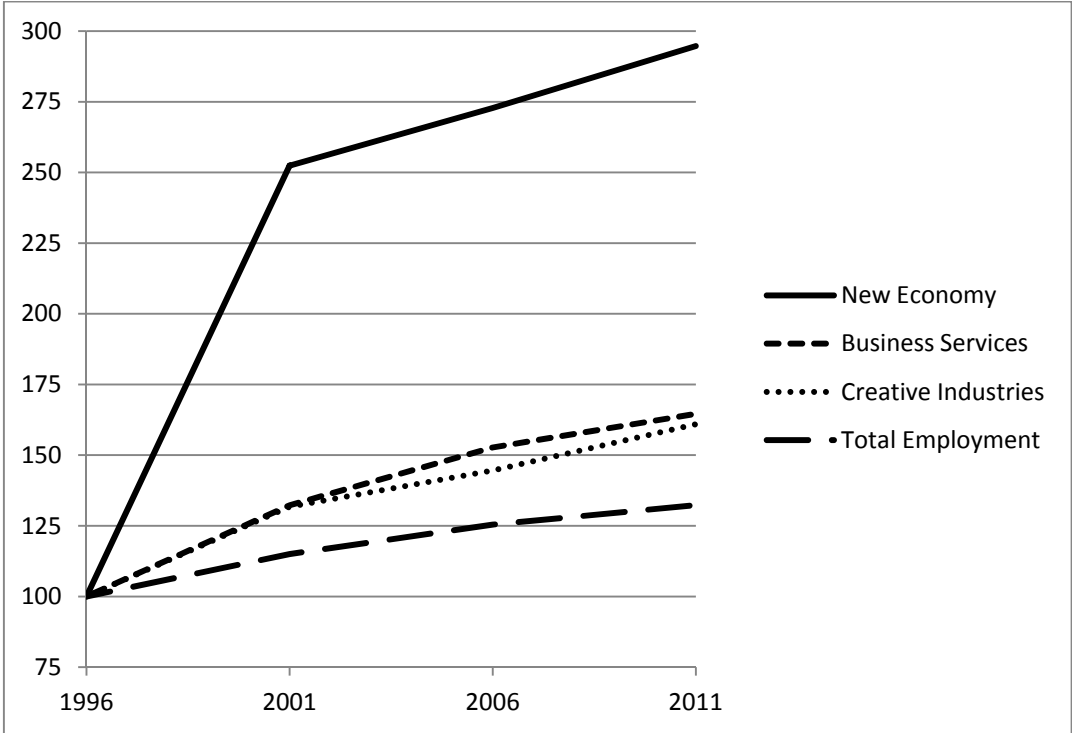
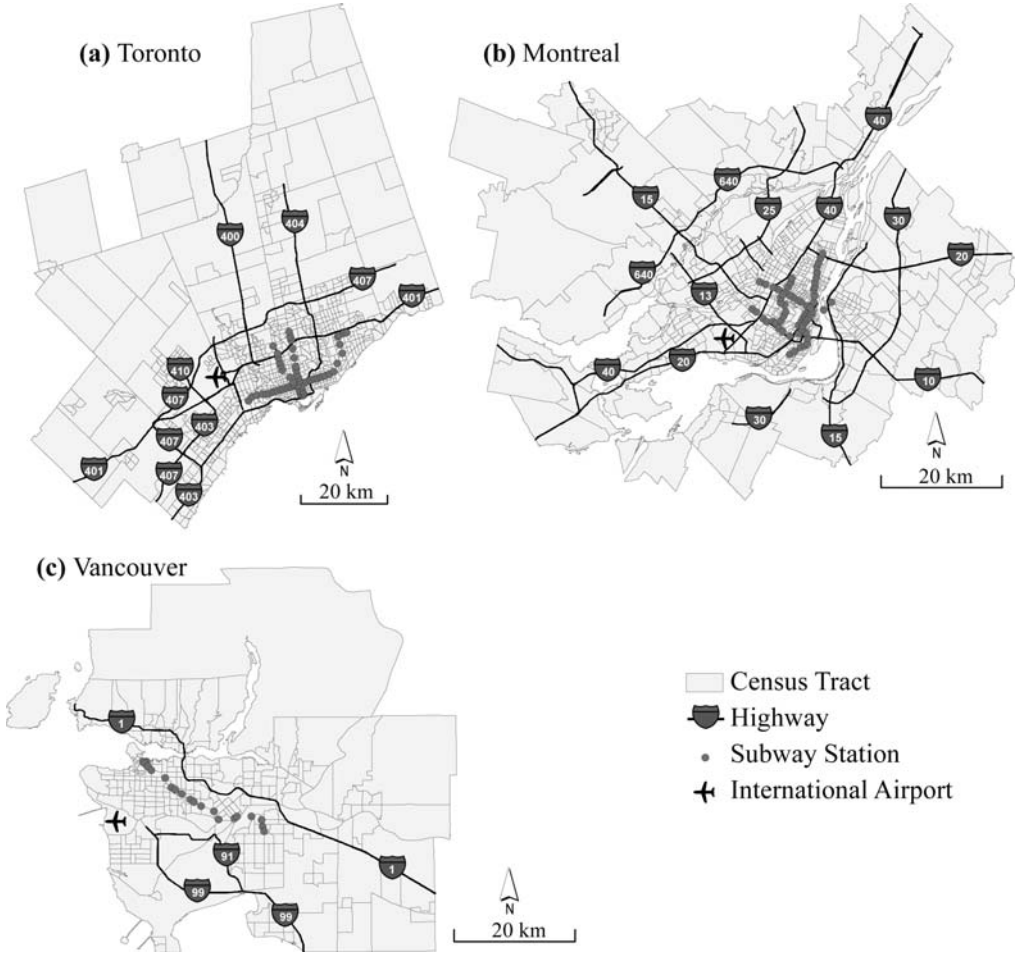


Figure A.1.2. Total Employment and Three Industry Groupings. Toronto, Montreal, and Vancouver (1996-2011).



**A.2. Toronto, Montreal and Vancouver Metropolitan Areas**



**A.3. Arts-related Occupations (Statistics Canada 1990 National Occupational Classification): NOC Codes and Description**

5121 Writers
5131 Producers, Directors, Choreographers, and Related Occupations
5132 Conductors, Composers, and Arrangers
5133 Musicians and Singers
5134 Dancers
5135 Actors
5136 Painters, Sculptors, and Other Visual Artists
5232 Other Performers
5241 Graphic Designers and Illustrating Artists
5243 Theatre, Fashion, Exhibit, and Other Creative Designers
5212 Technical Occupations Related to Museums and Galleries
5222 Film and Video Camera Operators
5225 Audio and Video Recording Technicians
5226 Other Technical Occupations in Motion Pictures, Broadcasting, and the Performing Arts
5227 Support and Assisting Occupations in Motion Pictures, Broadcasting, and the Performing Arts

## A.4. Correlation matrices: Three Metropolitan Areas

### A.4.1. Toronto

	Def. 1	Def. 2	Def. 3	Creative Ind.	Computer Manuf.	Financial Inst.	Inv. Dist. Airport	Inv. Dist. Highway	Inv. Dist. Subway	Manuf. Jobs Lost	Rent	Dist. to CBD	Univ. Faculty	Graduate Students	Arts-related Occup.	Bars & Rest.	Av. Inc.	
<b>Def. 1</b>	1.0000																	
<b>Def. 2</b>	0.7756	1.0000																
<b>Def. 3</b>	0.6522	0.6133	1.0000															
<b>Creative Ind.</b>	0.3257	0.2689	0.3023	1.0000														
<b>Computer Manuf.</b>	0.1136	0.1848	0.1169	0.0578	1.0000													
<b>Financial Inst.</b>	0.1437	0.1351	0.1660	0.0746	0.0041	1.0000												
<b>Inv. Dist. Airport</b>	0.0309	-0.0613	-0.0301	-0.0529	-0.0388	0.0469	1.0000											
<b>Inv. Dist. Highway</b>	0.2215	0.2352	0.2868	0.0815	0.0375	0.0602	0.0233	1.0000										
<b>Inv. Dist. Subway</b>	0.4269	0.2178	0.1058	0.1416	-0.0308	0.0434	-0.0160	0.0214	1.0000									
<b>Manuf. Jobs Lost</b>	0.1489	0.1681	0.1222	0.0803	0.0424	0.0560	0.0388	0.1007	0.0503	1.0000								
<b>Rent</b>	0.4452	0.2338	0.2829	0.1979	-0.0163	0.0491	0.0734	0.0740	0.4184	0.0128	1.0000							
<b>Distance to CBD</b>	-0.4519	-0.1471	-0.1509	-0.1697	-0.0015	-0.0474	-0.2489	-0.1329	-0.5216	-0.0031	-0.4322	1.0000						
<b>University Faculty</b>	0.1239	0.1412	0.0121	-0.0210	-0.0024	-0.0081	-0.0078	-0.0117	0.1025	-0.0226	0.0562	-0.0667	1.0000					
<b>Graduate Students</b>	0.2248	0.1302	0.1572	0.0347	-0.0005	0.0179	-0.0432	0.0264	0.1529	0.0219	0.2238	-0.1640	0.5097	1.0000				
<b>Arts-related Occup.</b>	0.4331	0.2542	0.1361	0.3882	-0.0249	-0.0214	-0.0618	0.0204	0.5291	0.0172	0.3913	-0.4550	0.0978	0.1196	1.0000			
<b>Bars &amp; Rest.</b>	0.0710	0.3410	0.1205	-0.0050	0.1099	0.0077	-0.0292	0.0196	-0.0169	-0.0147	0.0267	-0.0036	-0.0031	-0.0213	-0.0372	1.0000		
<b>Average Income</b>	0.0489	0.1317	0.0464	0.1363	-0.0014	0.0327	-0.0696	-0.0320	0.1132	-0.0649	0.2141	-0.0144	-0.0124	0.0226	0.1965	0.0005	1.0000	

Note: Three definitions of the dependent variable are used: "Def. 1": IT-NE employment density per km<sup>2</sup>; "Def. 2": IT-NE employment density per capita; "Def. 3": IT-NE employment location quotients.

### A.4.2. Montreal

	Def. 1	Def. 2	Def. 3	Creative Ind.	Computer Manuf.	Financial Inst.	Inv. Dist. Airport	Inv. Dist. Highway	Inv. Dist. Subway	Manuf. Jobs Lost	Rent	Dist. to CBD	Univ. Faculty	Graduate Students	Arts-related Occup.	Bars & Rest.	Av. Inc.	
<b>Def. 1</b>	1.0000																	
<b>Def. 2</b>	0.7530	1.0000																
<b>Def. 3</b>	0.6569	0.6400	1.0000															
<b>Creative Ind.</b>	0.2579	0.1952	0.1976	1.0000														
<b>Computer Manuf.</b>	0.0423	0.0870	0.0503	-0.0093	1.0000													
<b>Financial Inst.</b>	0.0428	0.0421	0.0416	-0.0127	0.0048	1.0000												
<b>Inv. Dist. Airport</b>	0.3636	0.1863	0.1789	0.0666	0.0677	0.0415	1.0000											
<b>Inv. Dist. Highway</b>	0.1183	0.1370	0.1076	0.0627	0.0217	0.0010	0.0053	1.0000										
<b>Inv. Dist. Subway</b>	0.3724	0.1931	0.1494	0.1534	-0.0544	0.0205	0.1994	0.0196	1.0000									
<b>Manuf. Jobs Lost</b>	0.1488	0.1086	0.0952	0.0586	-0.0062	0.0761	0.0366	0.1101	0.0588	1.0000								
<b>Rent</b>	0.3459	0.3040	0.2066	0.1608	0.0177	0.0265	0.2445	0.0332	0.1516	0.0204	1.0000							
<b>Distance to CBD</b>	-0.5028	-0.2341	-0.1896	-0.1764	0.0360	-0.0275	-0.5036	-0.0541	-0.4076	-0.0491	-0.2466	1.0000						
<b>University Faculty</b>	0.2133	0.2193	0.1016	0.0143	-0.0118	0.0132	0.0560	-0.0044	0.1449	0.0176	0.3157	-0.1149	1.0000					
<b>Graduate Students</b>	0.1403	0.0440	0.0466	0.0615	0.0000	-0.0311	0.1487	-0.0176	0.1390	0.0263	0.1800	-0.1882	0.4283	1.0000				
<b>Arts-related Occup.</b>	0.4545	0.2513	0.2736	<b>0.3707</b>	-0.0384	-0.0406	0.1317	0.0867	0.2966	0.0973	0.2526	-0.4044	0.0766	0.1272	1.0000			
<b>Bars &amp; Rest.</b>	0.0246	0.3109	-0.0044	-0.0283	0.0229	0.0035	0.0051	-0.0060	0.0040	-0.0206	0.0284	-0.0399	0.0051	-0.0202	-0.0391	1.0000		
<b>Average Income</b>	0.0135	0.0655	0.0286	0.0938	0.0080	-0.0251	0.0786	-0.0247	-0.0506	-0.0422	0.3694	-0.0085	0.0729	-0.0058	0.0661	0.0054	1.0000	

Note: Three definitions of the dependent variable are used: "Def. 1": IT-NE employment density per km<sup>2</sup>; "Def. 2": IT-NE employment density per capita; "Def. 3": IT-NE employment location quotients.

### A.4.3. Vancouver

	Def. 1	Def. 2	Def. 3	Creative Ind.	Computer Manuf.	Financial Inst.	Inv. Dist. Airport	Inv. Dist. Highway	Inv. Dist. Subway	Manuf. Jobs Lost	Rent	Dist. to CBD	Univ. Faculty	Graduate Students	Arts-related Occup.	Bars & Rest.	Av. Inc.	
<b>Def. 1</b>	1.0000																	
<b>Def. 2</b>	0.7276	1.0000																
<b>Def. 3</b>	0.6228	0.5984	1.0000															
<b>Creative Ind.</b>	0.2667	0.2247	0.2898	1.0000														
<b>Computer Manuf.</b>	0.2112	0.3777	0.4123	0.0906	1.0000													
<b>Financial Inst.</b>	0.1157	0.0661	0.1171	-0.0126	-0.0643	1.0000												
<b>Inv. Dist. Airport</b>	0.3758	0.1904	0.1613	0.0183	0.0472	-0.0189	1.0000											
<b>Inv. Dist. Highway</b>	0.0889	0.0878	0.1014	0.0391	0.1956	0.0221	-0.1015	1.0000										
<b>Inv. Dist. Subway</b>	0.3838	0.2118	0.2005	0.0341	-0.0243	0.0974	0.0476	-0.0522	1.0000									
<b>Manuf. Jobs Lost</b>	0.2339	0.2069	0.1643	0.1714	-0.0016	-0.0644	0.1388	0.0303	0.0800	1.0000								
<b>Rent</b>	0.5550	0.3438	0.2169	0.3264	-0.0230	0.0123	0.3337	-0.0136	0.2806	0.1025	1.0000							
<b>Distance to CBD</b>	-0.6004	-0.2972	-0.2874	-0.2647	-0.0510	0.0008	-0.6186	-0.1300	-0.2947	-0.1435	-0.5589	1.0000						
<b>University Faculty</b>	0.0798	0.1633	0.0553	0.0818	0.0425	-0.0246	0.0003	-0.0595	-0.0278	-0.0216	0.0135	-0.0485	1.0000					
<b>Graduate Students</b>	0.1976	0.1578	0.1400	0.0384	-0.0489	0.0774	0.2708	-0.0616	0.0040	-0.0442	0.1635	-0.3049	0.3048	1.0000				
<b>Arts-related Occup.</b>	0.4254	0.2099	0.1130	<b>0.3356</b>	-0.0747	0.0268	0.1484	-0.0534	0.1055	0.1406	0.6144	-0.4877	0.0270	0.1830	1.0000			
<b>Bars &amp; Rest.</b>	0.0314	0.4126	-0.0188	-0.0525	0.0241	-0.0052	-0.0315	0.0410	-0.0153	-0.0256	-0.0286	0.0110	-0.0052	-0.0306	-0.0686	1.0000		
<b>Average Income</b>	-0.0843	0.0565	0.0630	0.2614	-0.0281	-0.0021	-0.0498	-0.0570	-0.1399	0.0294	0.2822	-0.0226	0.0209	0.1405	0.2784	0.0058	1.0000	

Note: Three definitions of the dependent variable are used: "Def. 1": IT-NE employment density per km<sup>2</sup>; "Def. 2": IT-NE employment density per capita; "Def. 3": IT-NE employment location quotients.



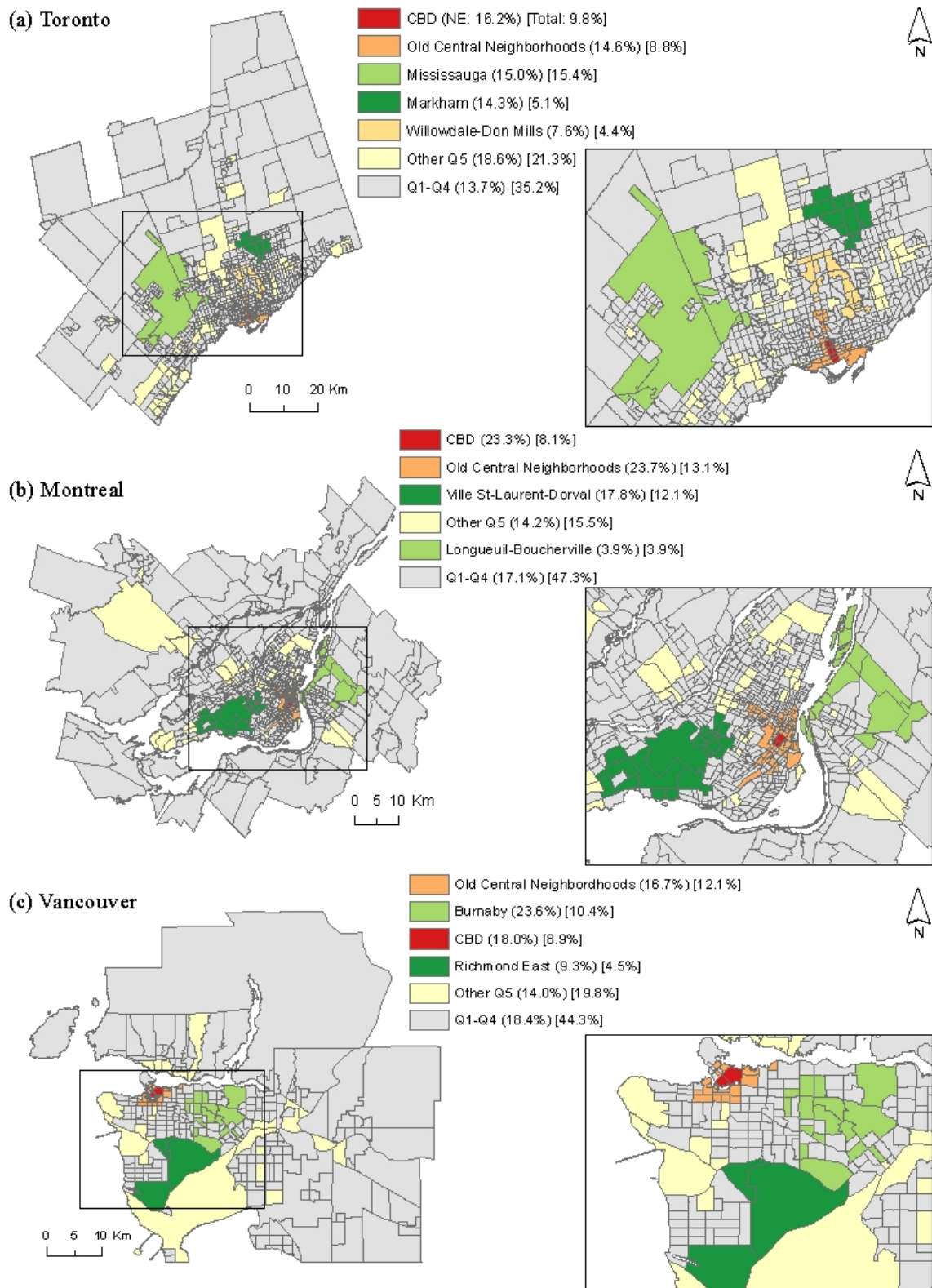
## A.5. Spatial Dependence Diagnostic

	Toronto			Montreal			Vancouver		
	Def. 1	Def. 2	Def. 3	Def. 1	Def. 2	Def. 3	Def. 1	Def. 2	Def. 3
MORAN	0.135*** [0.000]	0.129*** [0.000]	0.083*** [0.000]	0.103*** [0.000]	0.115*** [0.000]	0.055*** [0.002]	0.187*** [0.001]	0.072*** [0.003]	0.019 [0.134]
LM-ERR	40.744*** [0.000]	37.139*** [0.000]	15.203*** [0.000]	22.845*** [0.000]	28.117*** [0.000]	6.361** [0.012]	28.417*** [0.000]	4.172** [0.041]	0.295 [0.586]
R-LM-ERR	0.663 [0.416]	12.734*** [0.000]	4.713** [0.029]	12.559*** [0.000]	29.735*** [0.000]	0.564 [0.452]	0.747 [0.387]	4.373** [0.036]	3.971** [0.046]
LM-LAG	58.637*** [0.000]	66.641*** [0.000]	28.488*** [0.000]	45.226*** [0.000]	52.489*** [0.000]	7.912*** [0.005]	31.491*** [0.000]	10.165*** [0.001]	2.326 [0.127]
R-LM-LAG	18.556*** [0.000]	42.236*** [0.000]	17.998*** [0.000]	34.941*** [0.000]	54.106*** [0.000]	2.116 [0.146]	3.819* [0.051]	10.366*** [0.001]	6.001** [0.014]

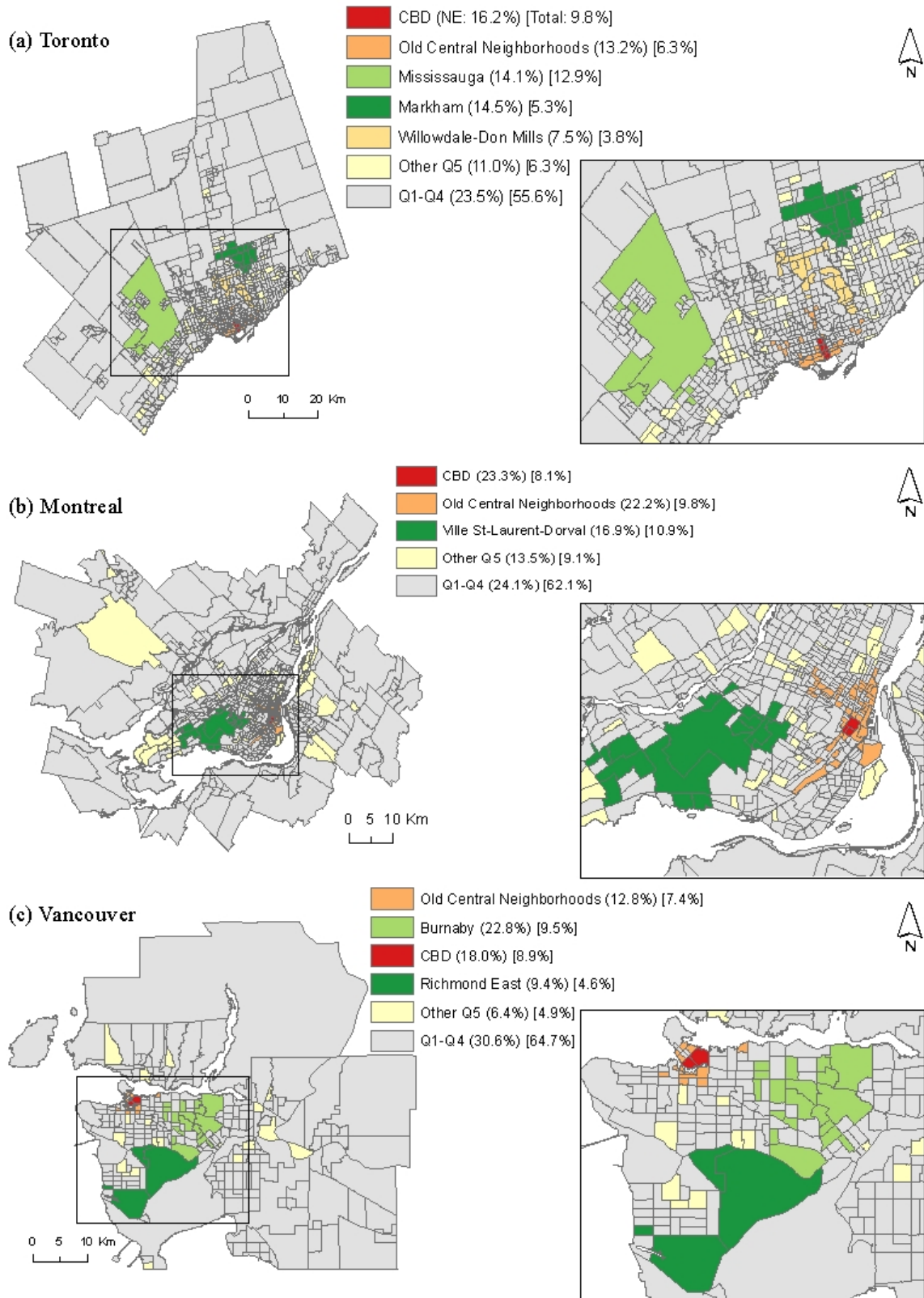
*Note:* Three definitions of the dependent variable are used: "Def. 1": NE employment density per km<sup>2</sup>; "Def. 2": NE employment density per capita; "Def. 3": NE employment location quotients. MORAN refers to the Moran's I test adapted to OLS residuals; LM-ERR refers to the Lagrange multiplier test for residual spatial autocorrelation; LM-LAG refers to the Lagrange multiplier test for spatially lagged endogenous variables; R-LM-ERR and R-LM-LAG are the robust versions of the Lagrange multiplier tests. Tests are calculated using a 5-nearest neighbor spatial weights matrix. P-values reported in brackets. \*\*\* p<0.01, \*\* p<0.05, \* p<0.1.

## A.6. Principal Concentrations of IT-driven New Economy Jobs

### A.6.1. IT-NE employment density per capita



## A.6.2. IT-NE employment location quotients



## A.7. Maximum Likelihood Estimation - SAR model

	Toronto			Montreal			Vancouver		
	Def. 1	Def. 2	Def. 3	Def. 1	Def. 2	Def. 3	Def. 1	Def. 2	Def. 3
<b>Employment Structure</b>									
Creative Industries	0.258*** (0.055)	0.209*** (0.052)	0.177*** (0.027)	0.088** (0.043)	0.103*** (0.039)	0.053*** (0.020)	0.079 (0.085)	0.103 (0.076)	0.156*** (0.049)
Computer Manuf.	0.070*** (0.020)	0.083*** (0.019)	0.021** (0.010)	0.032* (0.017)	0.037** (0.015)	0.012 (0.008)	0.180*** (0.033)	0.274*** (0.030)	0.151*** (0.019)
Financial Institutions	0.076*** (0.021)	0.062*** (0.019)	0.038*** (0.010)	0.014 (0.020)	0.014 (0.018)	0.009 (0.009)	0.055*** (0.021)	0.034* (0.019)	0.030** (0.012)
<b>Accessibility</b>									
Inv. Dist. Airport	0.417 (2.293)	0.132 (2.160)	-1.055 (1.109)	9.252*** (2.811)	3.998 (2.562)	3.582*** (1.326)	1.441 (2.287)	1.889 (2.048)	0.178 (1.298)
Inv. Dist. Highway	0.259*** (0.059)	0.309*** (0.055)	0.196*** (0.028)	0.023 (0.014)	0.034** (0.013)	0.012* (0.007)	0.114 (0.211)	0.010 (0.189)	0.033 (0.120)
Inv. Dist. Subway	0.282*** (0.092)	0.192** (0.086)	-0.024 (0.044)	0.127*** (0.042)	0.048 (0.039)	0.008 (0.020)	0.315** (0.124)	0.246** (0.110)	0.148** (0.070)
<b>Neighborhood Environment</b>									
Manufacturing Jobs									
Lost	0.441*** (0.117)	0.480*** (0.110)	0.123** (0.056)	0.356*** (0.124)	0.213* (0.114)	0.088 (0.059)	0.526*** (0.154)	0.547*** (0.138)	0.208** (0.088)
Rent	0.001*** (2.55E-04)	2.59E-04 (2.40E-04)	6.4E-04*** (1.23E-04)	0.001*** (3.60E-04)	0.001*** (3.33E-04)	2.21E-04 (1.72E-04)	0.002*** (3.81E-04)	0.001*** (3.40E-04)	2.97E-04 (2.15E-04)
Distance to CBD	-0.011*** (0.004)	0.005 (0.004)	0.001 (0.002)	-0.026*** (0.006)	-0.003 (0.006)	0.001 (0.003)	-0.011 (0.008)	0.008 (0.007)	-0.004 (0.004)
University Faculty	0.095** (0.047)	0.094** (0.045)	0.017 (0.023)	0.093** (0.043)	0.089** (0.040)	0.080*** (0.021)	0.177** (0.086)	0.124 (0.077)	0.151*** (0.050)
Graduate Students	0.144*** (0.046)	0.093** (0.044)	0.060*** (0.022)	-0.030 (0.043)	-0.051 (0.040)	-0.023 (0.021)	0.108* (0.064)	0.162*** (0.057)	0.063* (0.037)
Arts-related Occup.	0.010** (0.004)	0.008** (0.004)	-0.002 (0.002)	0.017*** (0.004)	0.005 (0.003)	0.007*** (0.002)	0.002 (0.009)	-0.002 (0.008)	-0.009* (0.005)
Bars and restaurants	2.24E-04* (1.33E-04)	0.001*** (1.25E-04)	1.39E-04** (6.43E-05)	2.16E-04 (3.11E-04)	0.003*** (2.88E-04)	3.99E-06 (1.49E-04)	0.001 (0.001)	0.010*** (9.29E-04)	-1.55E-04 (5.92E-04)
Average income	-0.003** (0.001)	0.002* (0.001)	-4.04E-04 (5.87E-04)	-0.006*** (0.002)	-0.002 (0.002)	-0.001 (0.001)	-0.012*** (0.003)	-0.002 (0.002)	5.12E-04 (0.001)
Rho	0.309*** (0.045)	0.322*** (0.044)	0.211*** (0.048)	0.305*** (0.048)	0.365*** (0.047)	0.154*** (0.055)	0.368*** (0.071)	0.320*** (0.072)	0.106 (0.087)
Constant	0.255 (0.329)	0.202 (0.295)	-0.423*** (0.149)	0.594* (0.315)	0.018 (0.282)	-0.004 (0.144)	-0.297 (0.489)	-0.659 (0.422)	0.078 (0.270)
AIC	2663.7	2568.3	1493	2703.9	2593.1	1583.5	812.9	747.9	488.8
Log Likelihood	-1314.9	-1267.2	-729.5	-1334.9	-1279.5	-774.8	-389.4	-357.0	-227.4
Pseudo R <sup>2</sup>	0.47	0.39	0.28	0.46	0.33	0.16	0.63	0.56	0.37
Observations	798	798	798	753	753	753	283	283	283

Note: Three definitions of the dependent variable are used: "Def. 1": IT-NE employment density per km<sup>2</sup>; "Def. 2": IT-NE employment density per capita; "Def. 3": IT-NE employment location quotients. \*\*\* p<0.01, \*\* p<0.05, \* p<0.1. Standard errors are given in parentheses.

## **A.8. Results with an industry-based definition of the IT-NE employment**

### **A.8.1. Defining IT-driven New Economy Jobs using Industries**

<b>Codes</b>	<b>Industry Class (NAICS 2002)</b>
5112	Software Publishers
5182	Data Processing, Hosting, and Related Services
5415	Computer Systems Design and Related Services

### **A.8.2. Number of IT-driven NE Jobs in the three CMAs in 2006**

	<b>Toronto</b>	<b>Montreal</b>	<b>Vancouver</b>
IT-NE Jobs	73,895	45,310	27,490
	(2.61)	(2.32)	(2.48)

Note: Share of New Economy jobs in total metropolitan employment in brackets.

### A.8.3. SAR Tobit model - Industry-based Definition of IT-NE Employment

	Toronto			Montreal			Vancouver		
	Def. 1	Def. 2	Def. 3	Def. 1	Def. 2	Def. 3	Def. 1	Def. 2	Def. 3
<b>Employment Structure</b>									
Creative Industries	0.289*** (0.062)	0.217*** (0.052)	0.194*** (0.038)	0.045 (0.053)	0.068 (0.044)	0.072* (0.040)	0.138 (0.099)	0.152* (0.078)	0.264*** (0.071)
Computer Manuf.	0.051** (0.022)	0.063*** (0.019)	0.009 (0.014)	0.021 (0.021)	0.029* (0.017)	0.014 (0.015)	0.159*** (0.039)	0.245*** (0.030)	0.106*** (0.028)
Financial Institutions	0.091*** (0.023)	0.074*** (0.019)	0.051*** (0.014)	0.010 (0.025)	0.013 (0.020)	0.002 (0.018)	0.051** (0.024)	0.036* (0.019)	0.037** (0.017)
<b>Accessibility</b>									
Inv. Dist. Airport	-0.737 (2.593)	-0.267 (2.163)	-0.973 (1.588)	12.100*** (3.479)	7.023** (2.803)	4.742* (2.542)	1.567 (2.643)	1.800 (2.074)	0.958 (1.886)
Inv. Dist. Highway	0.250*** (0.066)	0.287*** (0.055)	0.318*** (0.040)	0.007 (0.018)	0.016 (0.015)	0.004 (0.013)	-0.079 (0.244)	-0.106 (0.193)	-0.019 (0.176)
Inv. Dist. Subway	0.229** (0.103)	0.137 (0.085)	-0.093 (0.063)	0.070 (0.054)	0.035 (0.044)	-0.015 (0.041)	0.298** (0.143)	0.181 (0.111)	0.082 (0.102)
<b>Neighborhood Environment</b>									
Manufacturing Jobs Lost	0.261** (0.132)	0.313*** (0.110)	-0.018 (0.081)	0.342** (0.154)	0.274** (0.126)	0.177 (0.115)	0.284 (0.178)	0.294** (0.140)	0.061 (0.128)
Rent	9.1E-04*** (2.89E-04)	-1.29E-04 (2.39E-04)	1.43E-04 (1.76E-04)	0.002*** (4.53E-04)	0.001*** (3.71E-04)	3.36E-04 (3.36E-04)	0.002*** (4.41E-04)	0.001*** (3.47E-04)	3.15E-04 (3.13E-04)
Distance to CBD	-0.009** (0.004)	0.004 (0.004)	0.001 (0.003)	-0.026*** (0.008)	0.004 (0.006)	0.003 (0.006)	-0.015* (0.009)	0.004 (0.007)	-0.004 (0.006)
University Faculty	0.127** (0.053)	0.108** (0.044)	0.012 (0.032)	0.069 (0.054)	0.069 (0.044)	0.062 (0.040)	0.099 (0.100)	0.057 (0.079)	0.137* (0.071)
Graduate Students	0.077 (0.052)	0.042 (0.043)	0.028 (0.032)	-0.057 (0.054)	-0.066 (0.044)	-0.012 (0.040)	0.046 (0.074)	0.091 (0.058)	0.016 (0.053)
Arts-related Occup.	0.008 (0.005)	0.008** (0.004)	0.003 (0.003)	0.024*** (0.005)	0.013*** (0.004)	0.014*** (0.003)	0.007 (0.011)	-0.002 (0.008)	-0.010 (0.007)
Bars and restaurants	2.17E-04 (1.48E-04)	0.001*** (1.23E-04)	1.66E-04* (9.11E-05)	1.82E-04 (3.85E-04)	0.003*** (3.12E-04)	5.06E-05 (2.83E-04)	3.11E-04 (0.001)	0.009*** (9.38E-04)	-5.41E-04 (8.60E-04)
Average income	-9.37E-04 (0.001)	0.004*** (0.001)	0.001* (8.36E-04)	-0.005* (0.003)	-0.002 (0.002)	-0.001 (0.002)	-0.008*** (0.003)	4.01E-04 (0.002)	0.002 (0.002)
Rho	0.361*** (0.044)	0.354*** (0.044)	0.258*** (0.049)	0.215*** (0.054)	0.269*** (0.053)	0.084 (0.061)	0.312*** (0.078)	0.345*** (0.080)	0.078 (0.094)
Constant	0.212 (0.351)	0.309 (0.288)	-0.030 (0.213)	0.188 (0.376)	-0.535* (0.305)	-0.228 (0.282)	-0.293 (0.545)	-0.704* (0.423)	0.064 (0.390)
Observations	798	798	798	753	753	753	283	283	283
Censored observations	65	65	65	105	105	105	6	6	6

Note: Three definitions of the dependent variable are used: "Def. 1": IT-NE employment density per km<sup>2</sup>; "Def. 2": IT-NE employment density per capita; "Def. 3": IT-NE employment location quotients. \*\*\* p<0.01, \*\* p<0.05, \* p<0.1. Standard errors are given in parentheses. Number of n draws: 100,000. Number of m steps in the Gibbs sampler: 10. Number of draws used as burn-in: 10,000.

## A.9. Alternative indicators of “cool neighborhoods”

### A.9.1. Proportion of individuals with no religion

	Toronto			Montreal			Vancouver		
	Def. 1	Def. 2	Def. 3	Def. 1	Def. 2	Def. 3	Def. 1	Def. 2	Def. 3
<i>Employment Structure</i>									
Creative Industries	0.285*** (0.058)	0.234*** (0.055)	0.161*** (0.027)	0.094* (0.048)	0.108** (0.045)	0.067*** (0.023)	0.087 (0.091)	0.114 (0.082)	0.162*** (0.052)
Computer Manuf.	0.069*** (0.022)	0.082*** (0.021)	0.023** (0.010)	0.039** (0.019)	0.042** (0.018)	0.014 (0.009)	0.181*** (0.035)	0.278*** (0.031)	0.157*** (0.020)
Financial Institutions	0.073*** (0.023)	0.060*** (0.021)	0.040*** (0.011)	0.011 (0.023)	0.011 (0.021)	0.006 (0.011)	0.056** (0.022)	0.035* (0.020)	0.030** (0.013)
<i>Accessibility</i>									
Inv. Dist. Airport	2.221 (2.690)	1.340 (2.531)	0.089 (1.281)	9.773*** (3.195)	4.638 (2.921)	3.646** (1.503)	1.451 (2.330)	2.352 (2.075)	1.229 (1.325)
Inv. Dist. Highway	0.261*** (0.064)	0.312*** (0.060)	0.203*** (0.030)	0.028* (0.017)	0.037** (0.015)	0.014* (0.008)	0.114 (0.219)	0.026 (0.197)	0.074 (0.125)
Inv. Dist. Subway	0.299*** (0.099)	0.203** (0.092)	-0.068 (0.047)	0.098* (0.050)	0.040 (0.046)	0.006 (0.024)	0.313** (0.131)	0.262** (0.115)	0.184** (0.074)
<i>Neighborhood Environment</i>									
Manufacturing Jobs Lost	0.469*** (0.128)	0.513*** (0.120)	0.143** (0.061)	0.399*** (0.143)	0.270** (0.134)	0.129* (0.068)	0.543*** (0.162)	0.559*** (0.144)	0.204** (0.092)
Rent	0.001*** (2.83E-04)	3.58E-04 (2.64E-04)	0.001*** (1.35E-04)	0.001*** (4.18E-04)	0.001*** (3.91E-04)	3.00E-04 (2.00E-04)	0.002*** (3.71E-04)	0.001*** (3.26E-04)	1.32E-04 (2.04E-04)
Distance to CBD	-0.013*** (0.004)	0.005 (0.004)	0.002 (0.002)	-0.022*** (0.007)	0.001 (0.006)	0.002 (0.003)	-0.012 (0.008)	0.008 (0.007)	-0.002 (0.004)
University Faculty	0.095* (0.052)	0.095* (0.049)	0.007 (0.025)	0.063 (0.050)	0.080* (0.047)	0.070*** (0.023)	0.184** (0.091)	0.126 (0.082)	0.138*** (0.051)
Graduate Students	0.135*** (0.051)	0.090* (0.048)	0.060** (0.024)	-0.059 (0.050)	-0.067 (0.047)	-0.031 (0.024)	0.114* (0.068)	0.17*** (0.061)	0.068* (0.038)
% No Religion	0.019*** (0.007)	0.014** (0.006)	0.009*** (0.003)	0.076*** (0.012)	0.027** (0.011)	0.018*** (0.005)	-0.003 (0.009)	-0.006 (0.008)	-0.008 (0.005)
Bars and restaurants	2.54E-04* (1.47E-04)	0.001*** (1.37E-04)	1.70E-04** (7.17E-05)	4.16E-04 (3.59E-04)	0.003*** (3.32E-04)	5.19E-05 (1.70E-04)	0.001 (0.001)	0.010*** (0.001)	-3.40E-04 (0.001)
Average income	-0.002* (0.001)	0.003** (0.001)	-2.56E-04 (0.001)	-0.005** (0.003)	-0.002 (0.002)	-0.001 (0.001)	-0.012*** (0.003)	-0.003 (0.002)	1.87E-04 (0.001)
Rho	0.287*** (0.045)	0.305*** (0.045)	0.181*** (0.050)	0.236*** (0.051)	0.326*** (0.052)	0.172*** (0.057)	0.359*** (0.071)	0.303*** (0.080)	0.106 (0.087)
Constant	-0.121 (0.366)	-0.143 (0.338)	-0.696*** (0.172)	0.095 (0.355)	-0.362 (0.329)	-0.238 (0.170)	-0.223 (0.593)	-0.465 (0.526)	0.291 (0.337)
Observations	798	798	798	753	753	753	283	283	283
Censored observations	65	65	65	105	105	105	6	6	6

Note: Three definitions of the dependent variable are used: "Def. 1": IT-NE employment density per km<sup>2</sup>; "Def. 2": IT-NE employment density per capita; "Def. 3": IT-NE employment location quotients. \*\*\* p<0.01, \*\* p<0.05, \* p<0.1. Standard errors are given in parentheses. Number of n draws: 100,000. Number of m steps in the Gibbs sampler: 10. Number of draws used as burn-in: 10,000.

## A.9.2. Proportion of Common-law Couples

	Toronto			Montreal			Vancouver		
	Def. 1	Def. 2	Def. 3	Def. 1	Def. 2	Def. 3	Def. 1	Def. 2	Def. 3
<b>Employment Structure</b>									
Creative Industries	0.284*** (0.058)	0.238*** (0.055)	0.175*** (0.028)	0.123** (0.048)	0.125*** (0.044)	0.071*** (0.023)	0.056 (0.088)	0.092 (0.081)	0.156*** (0.052)
Computer Manuf.	0.073*** (0.022)	0.085*** (0.021)	0.023** (0.011)	0.030 (0.019)	0.039** (0.018)	0.012 (0.009)	0.181*** (0.034)	0.276*** (0.031)	0.155*** (0.020)
Financial Institutions	0.076*** (0.023)	0.061*** (0.021)	0.039*** (0.011)	0.007 (0.023)	0.009 (0.021)	0.005 (0.011)	0.043** (0.022)	0.027 (0.020)	0.031** (0.013)
<b>Accessibility</b>									
Inv. Dist. Airport	-0.196 (2.506)	-0.537 (2.361)	-1.238 (1.198)	15.300*** (3.569)	5.704* (3.216)	5.800*** (1.652)	4.464* (2.311)	3.585* (2.105)	0.937 (1.352)
Inv. Dist. Highway	0.268*** (0.064)	0.315*** (0.060)	0.201*** (0.031)	0.026 (0.017)	0.036** (0.015)	0.014* (0.008)	0.285 (0.213)	0.128 (0.197)	0.079 (0.127)
Inv. Dist. Subway	0.245** (0.102)	0.183* (0.095)	-0.039 (0.048)	0.131*** (0.050)	0.059 (0.045)	0.012 (0.023)	0.247** (0.126)	0.203* (0.114)	0.169** (0.074)
<b>Neighborhood Environment</b>									
<b>Manufacturing Jobs</b>									
Lost	0.431*** (0.128)	0.492*** (0.120)	0.143** (0.062)	0.385*** (0.145)	0.274** (0.134)	0.119* (0.068)	0.454*** (0.156)	0.505*** (0.144)	0.200** (0.093)
Rent	0.001*** (2.82E-04)	3.58E-04 (2.64E-04)	0.001*** (1.34E-04)	0.002*** (4.26E-04)	0.001*** (3.91E-04)	4.22E-04 (2.00E-04)	0.002*** (3.74E-04)	0.001*** (3.41E-04)	1.50E-04 (2.20E-04)
Distance to CBD	-0.013*** (0.004)	0.004 (0.004)	0.001 (0.002)	-0.027*** (0.007)	-0.003 (0.006)	0.002 (0.003)	-0.014* (0.008)	0.009 (0.006)	-0.001 (0.004)
University Faculty	0.100* (0.052)	0.101** (0.048)	0.016 (0.025)	0.097* (0.051)	0.089* (0.047)	0.081*** (0.023)	0.164* (0.088)	0.115 (0.082)	0.140*** (0.052)
Graduate Students	0.169*** (0.051)	0.112** (0.048)	0.067*** (0.024)	-0.040 (0.050)	-0.057 (0.047)	-0.028 (0.024)	0.138** (0.065)	0.180*** (0.059)	0.065* (0.039)
% Common-law Couples	0.035*** (0.010)	0.020** (0.010)	-0.001 (0.005)	0.028*** (0.006)	0.006 (0.005)	0.010*** (0.003)	0.053*** (0.011)	0.027*** (0.009)	-4.30E-04 (0.006)
Bars and restaurants	2.51E-04* (1.46E-04)	0.001*** (1.37E-04)	1.48E-04** (7.18E-05)	4.01E-04 (3.64E-04)	0.579*** (5.41E-01)	7.53E-05 (1.70E-04)	0.002* (1.06E-03)	0.010*** (9.66E-04)	-6.42E-05 (6.26E-04)
Average income	-0.002 (1.33E-03)	0.003** (1.26E-03)	-3.14E-04 (6.34E-04)	-0.004 (2.57E-03)	0.003 (3.35E-04)	-4.08E-04 (1.21E-03)	-0.009*** (2.60E-03)	-7.26E-04 (2.40E-03)	2.59E-04 (1.55E-03)
Rho	0.283*** (0.045)	0.308*** (0.045)	0.196*** (0.050)	0.296*** (0.049)	0.354*** (0.049)	0.188*** (0.056)	0.227*** (0.076)	0.241*** (0.084)	0.094 (0.088)
Constant	0.037 (0.350)	0.010 (0.322)	-0.527*** (0.163)	-0.698 (0.433)	-0.434 (0.402)	-0.547*** (0.207)	-0.234 (0.489)	-0.716 (0.437)	0.025 (0.286)
Observations	798	798	798	753	753	753	283	283	283
Censored observations	65	65	65	105	105	105	6	6	6

Note: Three definitions of the dependent variable are used: "Def. 1": IT-NE employment density per km<sup>2</sup>; "Def. 2": IT-NE employment density per capita; "Def. 3": IT-NE employment location quotients. \*\*\* p<0.01, \*\* p<0.05, \* p<0.1. Standard errors are given in parentheses. Number of n draws: 100,000. Number of m steps in the Gibbs sampler: 10. Number of draws used as burn-in: 10,000.