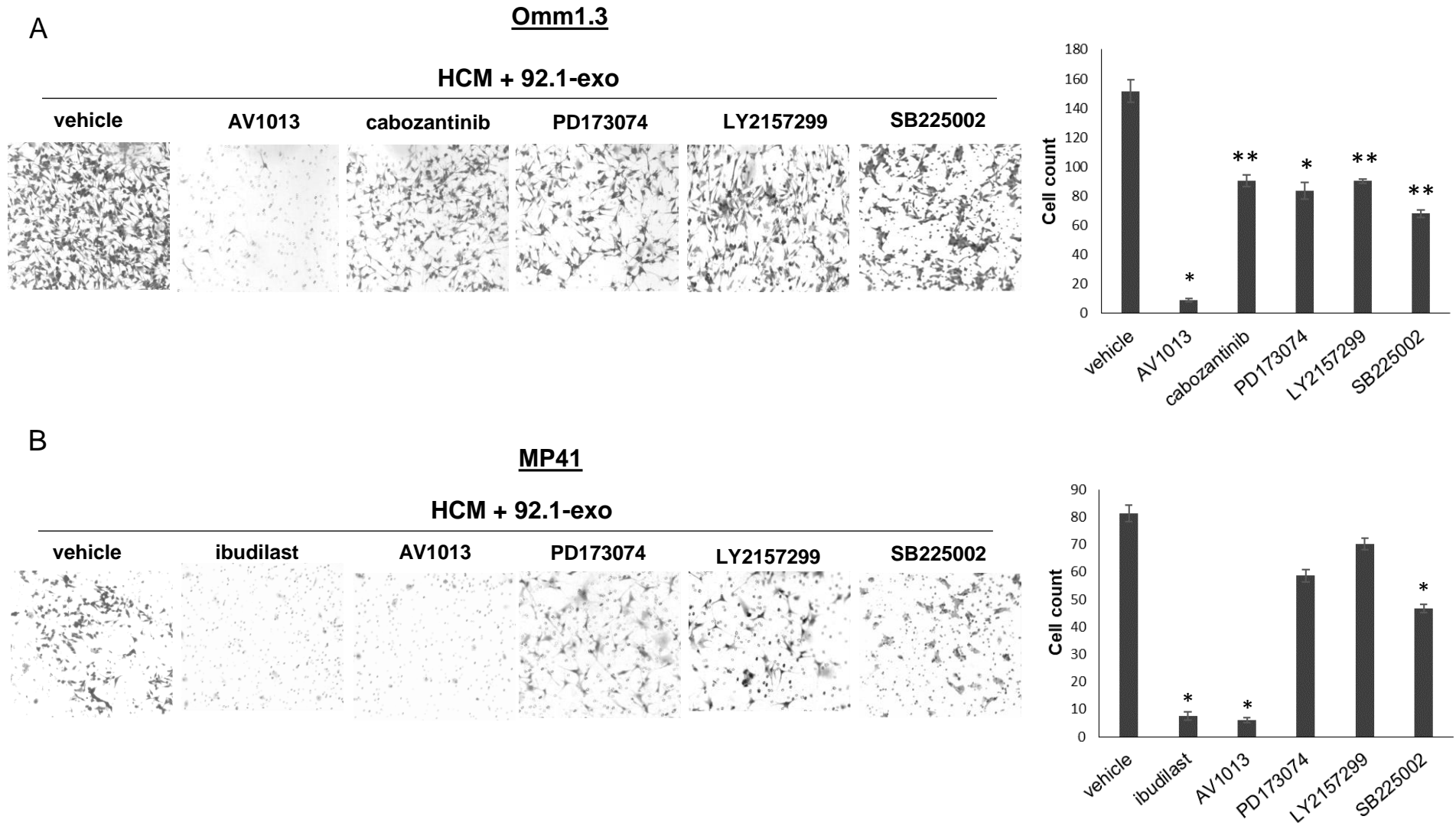


Supplementary Figure S2



Supplementary Figure S2. Cell migration assays using Omm1.3 (**A**) and MP41 (**B**) cell lines in the presence of 92.1-exo-stimulated HCM treated with vehicle (DMSO) or 25 μ M AV1013, 1 μ M cabozantinib, 15nM PD173074, 1 μ M LY2157299, and 100nM SB225002. Pictures of migrated cells were taken under the microscope and counted for both cell lines. * $p < 0.001$; ** $p < 0.01$ compared to vehicle.