

Fig. S6

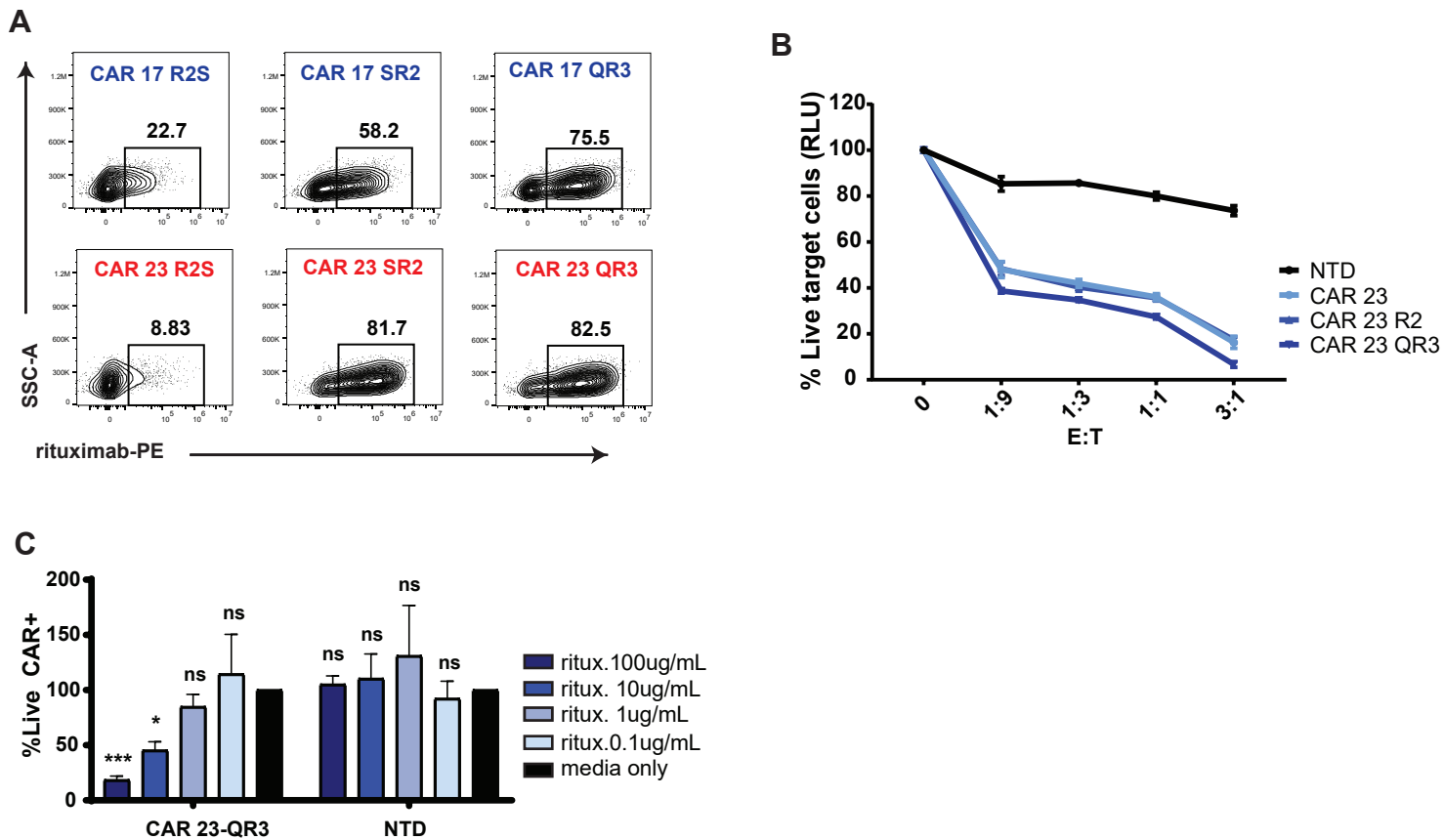


Figure S6. CD70 CAR T cells with a rituximab-based “off switch” are fully functional and are depleted upon addition of rituximab. **A**, CD70 CAR T cells with three different R-format “off switches” were stained with rituximab and analyzed by flowcytometry. **B**, CAR 23 T cells with rituximab formats lysis 786-O tumor cells in vitro. CAR T cells and luciferase-labeled 786-O cells were co-cultured for 72 hours, followed by ONE-Glo luminescent measurement to assess target cell viability. Effector to target ratios (E:T) ranged from 3:1 to 1:9. **C**, CD70 CAR T cells were depleted by addition of rituximab in an ADCC assay. CAR T cells, NK cells, and rituximab at indicated concentrations were incubated for 3 hrs and CAR T cells were then analyzed for viability by flow cytometry.