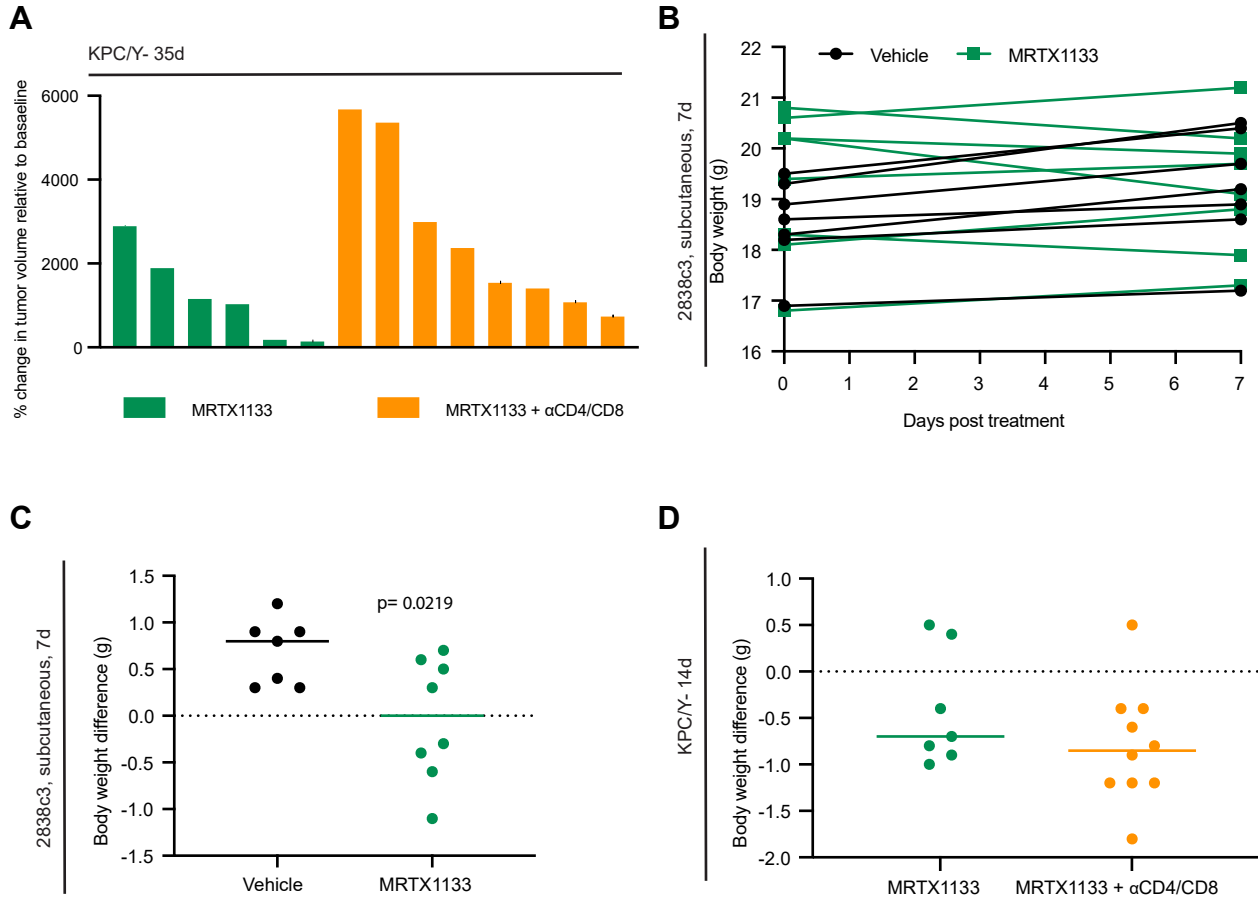


**Figure S7**



**Supplementary Figure 7. Effects of MRTX1133 in KPC/Y and subcutaneous models.**

**(A)** Waterfall plot of MRTX1133 and MRTX1133+  $\alpha$ CD4/CD8 treated KPC/Y tumors showing change in tumor volume after removal of MRTX1133. Each bar represents a single tumor. n=6-8/group.

**(B)** Body weight (g) over 7d of treatment (2838c3, subcutaneous) with either vehicle or MRTX1133 (30mg/kg). Each line represents a single mouse. n=7-8/group.

**(C)** Body weight difference (g) after 7d of treatment (2838c3, subcutaneous) with either vehicle or MRTX1133 (30mg/kg) compared to starting weight. Each dot represents a single mouse. n=7-8/group. p-value was determined by Student's unpaired t-test. Error bars indicate SD. Results representative of 2 independent experiments.

**(D)** Body weight difference (g) of KPC/Y mice after 14d of treatment with either MRTX1133 or MRTX1133+  $\alpha$ CD4/CD8 compared to starting weight. Each dot represents a single mouse. n=7-19/group. Error bars indicate SD.