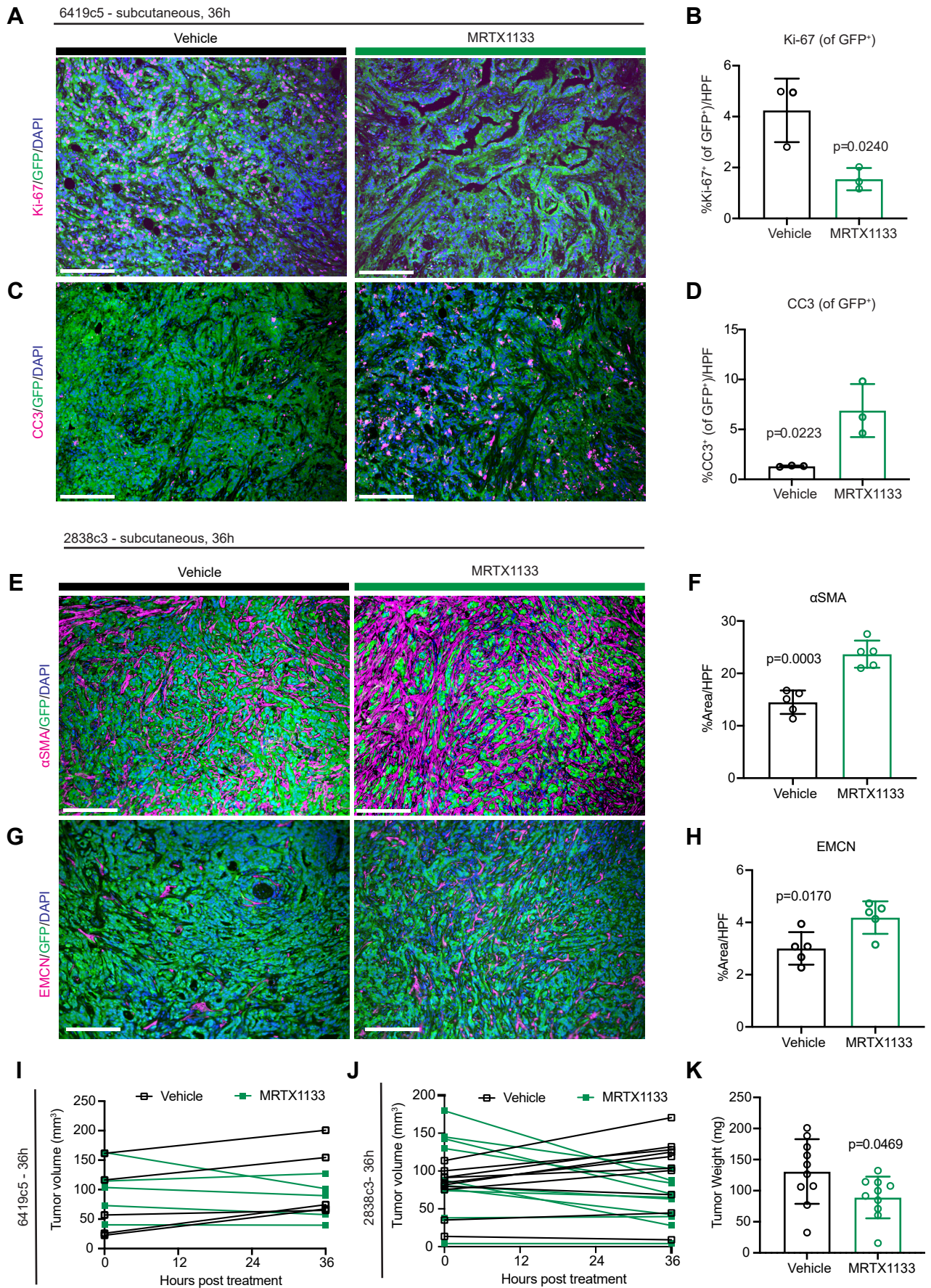


**Figure S5**



**Supplementary Figure 5. MRTX1133 exerts *in vivo* effects early in treatment.**

**(A)** Representative co-immunofluorescence images of Ki-67, GFP, and DAPI in vehicle and MRTX1133 treated tumors (6419c5, subcutaneous, 36h). Scale bars, 100  $\mu$ m. Objective, 20x.

**(B)** Quantitation of proliferating tumor cells (Ki-67 of GFP<sup>+</sup>) as percent area per high power field (HPF) in vehicle (n= 3) and MRTX1133 treated tumors (n=3). At least 3 fields of view were averaged per tumor. p-value was determined by Student's unpaired t-test. Error bars indicate SD.

**(C)** Representative co-immunofluorescence images of CC3, GFP, and DAPI in vehicle and MRTX1133 treated tumors (6419c5, subcutaneous, 36h). Scale bars, 100  $\mu$ m. Objective, 20x.

**(D)** Quantitation of apoptotic tumor cells (CC3 of GFP<sup>+</sup>) as percent area per high power field (HPF) in vehicle (n= 3) and MRTX1133 treated tumors (n=3). At least 3 fields of view were averaged per tumor. p-value was determined by Student's unpaired t-test.

**(E)** Representative co-immunofluorescence images of  $\alpha$ SMA, GFP, and DAPI in vehicle and MRTX1133 treated tumors (2838c3, subcutaneous, 36h). Scale bars, 100  $\mu$ m. Objective, 20x.

**(F)** Quantitation of fibroblasts ( $\alpha$ SMA<sup>+</sup>) as percent area per high power field (HPF) in vehicle (n= 5) and MRTX1133 treated tumors (n=5). At least 3 fields of view were averaged per tumor. p-value was determined by Student's unpaired t-test. Error bars indicate SD.

**(G)** Representative co-immunofluorescence images of EMCN, GFP, and DAPI in vehicle and MRTX1133 treated tumors (2838c3, subcutaneous, 36h). Scale bars, 100  $\mu$ m. Objective, 20x.

**(H)** Quantitation of blood vessels (EMCN<sup>+</sup>) as percent area per high power field (HPF) in vehicle (n= 5) and MRTX1133 treated tumors (n=5). At least 3 fields of view were averaged per tumor. p-value was determined by Student's unpaired t-test. Error bars indicate SD.

**(I)** Tumor volumes (mm<sup>3</sup>) of 6419c5 (subcutaneous) tumors treated with vehicle or MRTX1133 for 36h. n=5/group. Each line represents a single tumor.

**(J)** Tumor volumes (mm<sup>3</sup>) of 2838c3 (subcutaneous) tumors treated with vehicle or MRTX1133 for 36h. n=10/group. Each line represents a single tumor.

**(K)** Final tumor weight (mg) after 36h of treatment. n=10/group. p-value was determined by Student's unpaired t-test. Error bars indicate SD.